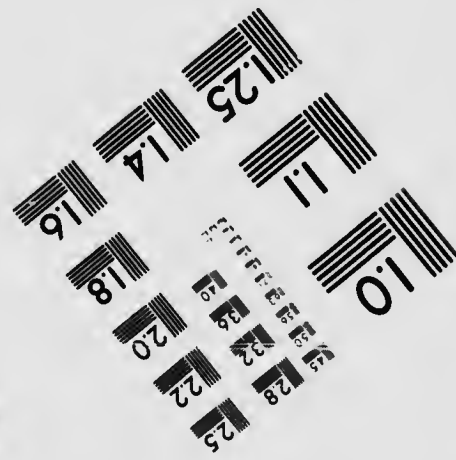
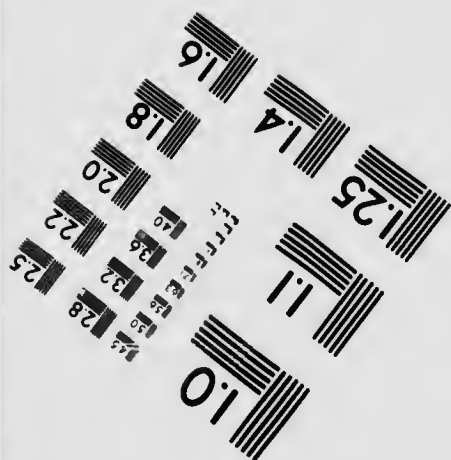
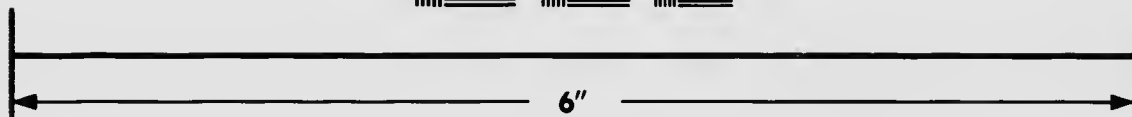
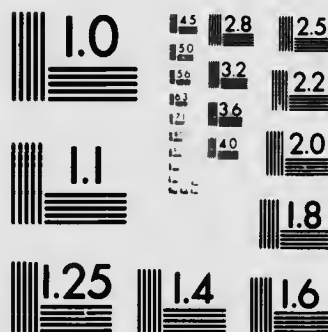


**IMAGE EVALUATION  
TEST TARGET (MT-3)**



**Photographic  
Sciences  
Corporation**

23 WEST MAIN STREET  
WEBSTER, N.Y. 14580  
(716) 872-4503

25  
22

**CIHM  
Microfiche  
Series  
(Monographs)**

**ICMH  
Collection de  
microfiches  
(monographies)**



**Canadian Institute for Historical Microreproductions / Institut canadien de microreproductions historiques**

**© 1992**



The copy filmed here has been reproduced thanks to the generosity of:

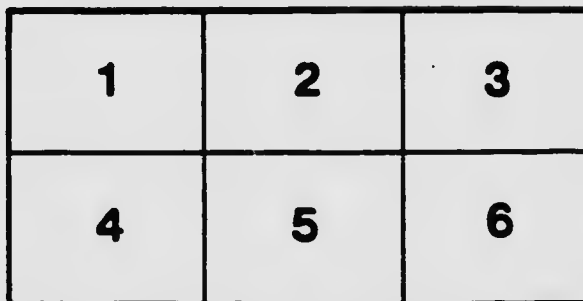
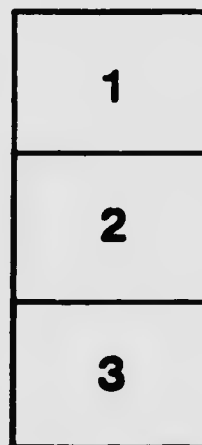
Library of the National Archives of Canada

The images appearing here are the best quality possible considering the condition and legibility of the original copy and in keeping with the filming contract specifications.

Original copies in printed paper covers are filmed beginning with the front cover and ending on the last page with a printed or illustrated impression, or the back cover when appropriate. All other original copies are filmed beginning on the first page with a printed or illustrated impression, and ending on the last page with a printed or illustrated impression.

The last recorded frame on each microfiche sheet contains the symbol  $\rightarrow$  (meaning "CONTINUED"), or the symbol  $\nabla$  (meaning "END"), whichever applies.

Maps, plates, charts, etc., may be filmed at different reduction ratios. Those too large to be entirely included in one exposure are filmed beginning in the upper left hand corner, left to right and top to bottom, as many frames as required. The following diagrams illustrate the method:



L'exemplaire filmé fut reproduit grâce à la générosité de:

La bibliothèque des Archives nationales du Canada

Les images suivantes ont été reproduites avec le plus grand soin, compte tenu de la condition et de la netteté de l'exemplaire filmé, et en conformité avec les conditions du contrat de filmage.

Les exemplaires originaux dont la couverture en papier est imprimée sont filmés en commençant par le premier plat et en terminant soit par la dernière page qui comporte une empreinte d'impression ou d'illustration, soit par le second plat, selon le cas. Tous les autres exemplaires originaux sont filmés en commençant par la première page qui comporte une empreinte d'impression ou d'illustration et en terminant par la dernière page qui comporte une telle empreinte.

Un des symboles suivants apparaîtra sur la dernière image de chaque microfiche, selon le cas: le symbole  $\rightarrow$  signifie "A SUIVRE", le symbole  $\nabla$  signifie "FIN".

Les cartes, planches, tableaux, etc., peuvent être filmés à des taux de réduction différents. Lorsque le document est trop grand pour être reproduit en un seul cliché, il est filmé à partir de l'angle supérieur gauche, de gauche à droite, et de haut en bas, en prenant le nombre d'images nécessaire. Les diagrammes suivants illustrent la méthode.

101.29 cat. 70

# The Fish Automatic Fire Shutter

---

**Positive Fire Protection**

---

For

**Doors, Windows, Elevators, Archways,  
Stairways, Dumbwaiters, etc.**

**Interior or Exterior.**

---

Manufactured  
by **The Expanded Metal and  
Fireproofing Company, Limited**

**Fraser Avenue, : : : Toronto, Canada**

# The Fish Automatic Fire Shutter

Pat., Dec. 8th, 1908. No. 115482

## Construction

The Fish Automatic Fire Shutter is constructed of No. Gauge Basic Open Hearth Steel Sheets, heavily galvanized, uniform sections or leaves 12 inches to the weather, two thicknesses of the Steel being employed with a lining of asbestos, and having angle flanges at top and bottom of leaves, which add rigidity to the surface of the Shutter in the face of flame.

Each Section slides over the one above by means of iron bolts or rods running through brass grummeted holes in the flanges, and all are contained or telescoped into a weather-proof hood over the opening, held in position by double levers, bolted with a link fusible at a temperature of 155 degrees Faht. The instant the link fuses, the levers are released, and the shutter drops into position over the opening, shutting off draft, and forming a perfect steel barrier.

The Fish Automatic Fire Shutter is built upon practical lines the result of years of study and experiment by the inventor. Every feature of its construction being worked out with mathematical precision, with a view to presenting to flames the greatest barrier: and it is justly maintained that this Shutter stands pre-eminently the first in the field as a fire retardant from the following reasons: It has been given the "break down test" of the Underwriters' Laboratories at Chicago, and withstood the enormous heat of 2,020 degrees Fahrenheit. After one hour of this test and application of water at 60 lb pressure, it was perfectly intact upon the opening. The Canadian Fire Underwriters' Association have given the Fish Automatic Fire Shutter the highest rating, which is its best guarantee, and the rebate which this assures is a concession to its merit.

Firemen when obliged to force their way in a building installed with Fish Automatic Fire Shutters simply have to raise a section of shutter to insert the hose, this feature has appealed strongly to Fire Chiefs to whom shutter has been submitted. The Fish Automatic Fire Shutter is particularly adapted for use on mullioned window

tic

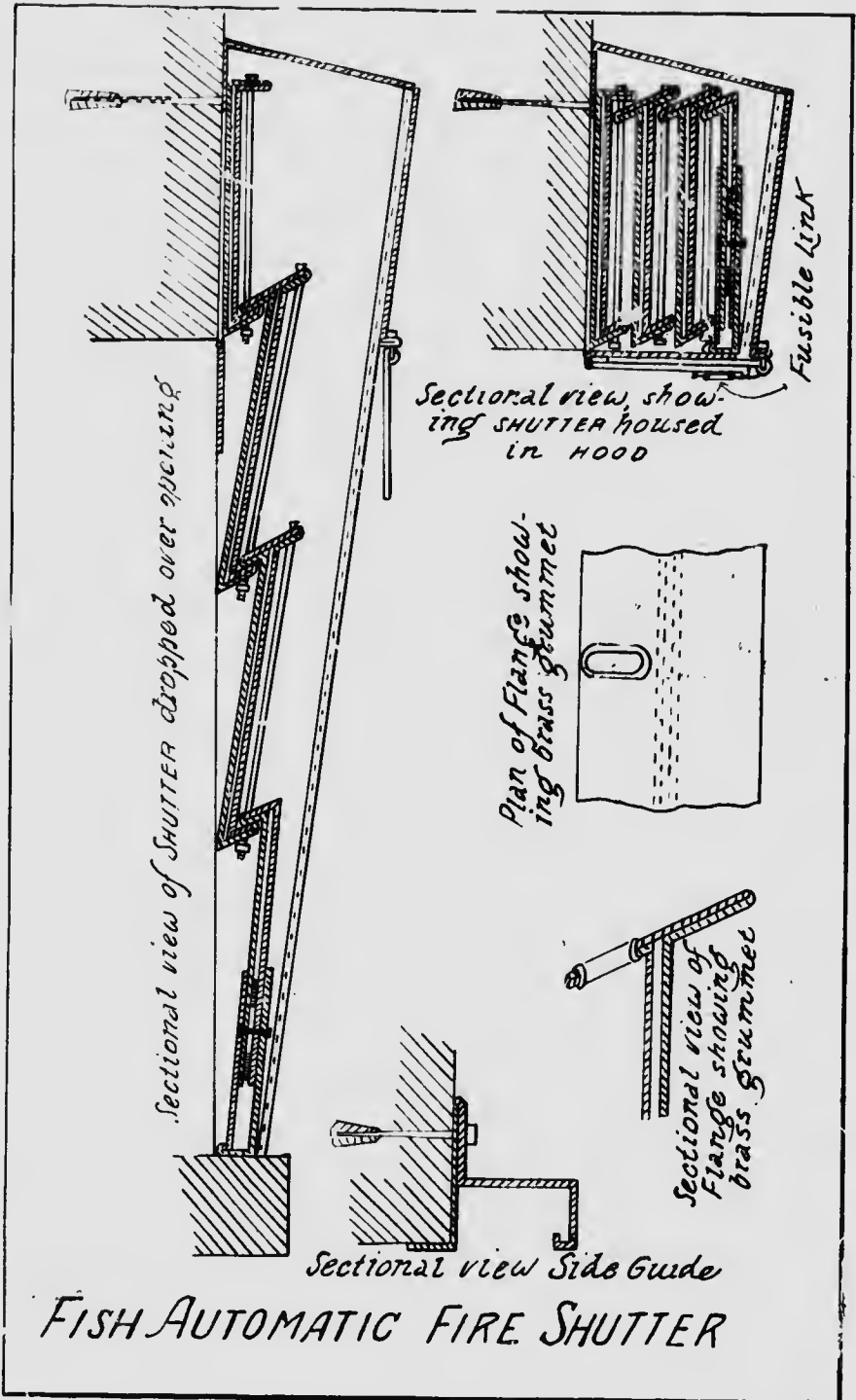
of No. 24  
anized, in  
two thick-  
bestos, and  
which adds  
e.

s of iron  
es in the  
ather-proof  
ers, bound  
aht. The  
he shutter  
and form-

tical lines,  
or. Every  
natical pre-  
rrier: and  
ly the first  
as: It has  
laboratories  
rees Fahr.  
at 60 lbs.

Canadian  
Automatic Fire  
e, and the

g installed  
section of  
gly to Fire  
Automatic  
windows.



# FISH AUTOMATIC FIRE SHUTTER

The Architect will find this shutter a great benefit. He i  
he have to disfigure the building with swinging shutters, whic  
agency to close.

The Fish Automatic Fire Shutter adds to the attractiveness  
installation.

Elevator openings are considered the worst of hazards, as t  
floor to another. Owing to the construction of walls or lack of  
ordinary shutters, but the Fish Automatic Fire Shutters solve t

When writing for quotation, please furnish the following in-

- 1st. Inside or outside installation.
- 2nd. Width of opening.
- 3rd. Height of opening at sides.
- 4th. Height of opening at centre, if arched.
- 5th. Height from top of opening to ceiling,  
if inside.
- 6th. If cased with wood give width of cas-  
ing, if inside.
- 7th. Of what material is wall.

## Good Points of the Fish Automatic Fire Shutter

It is Simple, having no springs nor gears  
to get out of order.

It is positively Automatic and reliable.

It shuts out no light or air.

It is up out of the way, occupying no  
valuable space.

It needs no attention.

The first cost is the whole cost.

The rebate on your Insurance Premium  
will pay for installation.

It being heavily galvanized will last in-  
definitely.

All movable joints are brass bushed, pre-  
venting corrosion.

It **drops of its own weight.**



Two classes of Fi



He i  
s, whic  
tiveness

ds, as t  
lack of  
solve t  
ving in<sup>1</sup>

utter  
es or  
the  
fus-  
  
fus-  
n by  
eaves  
ake a  
re.

es of Fi





# The Fish Automatic Fire Shutter Open

Showing the leaves housed  
in the hood

---

Handsome in appearance.

No obstruction to light.

Easy to install.

Simple and sure of operation.

Absolutely indestructable.

An investment earning large  
and sure dividends.

