

**CIHM
Microfiche
Series
(Monographs)**

**ICMH
Collection de
microfiches
(monographies)**



Canadian Institute for Historical Microreproductions / Institut canadien de microreproductions historiques

© 1998

The copy filmed here has been reproduced thanks to the generosity of:

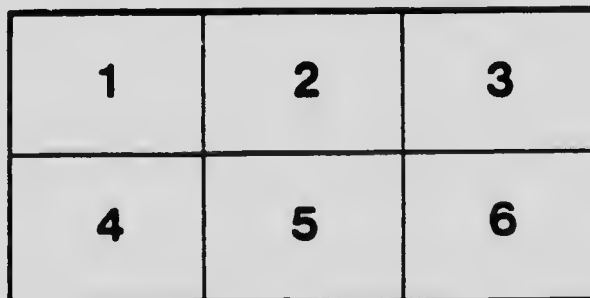
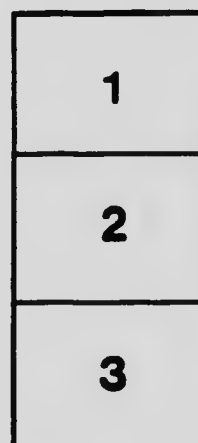
Toronto Public Library
North York Central Library
Canadiana Department

The images appearing here are the best quality possible considering the condition and legibility of the original copy and in keeping with the filming contract specifications.

Original copies in printed paper covers are filmed beginning with the front cover and ending on the last page with a printed or illustrated impression, or the back cover when appropriate. All other original copies are filmed beginning on the first page with a printed or illustrated impression, and ending on the last page with a printed or illustrated impression.

The last recorded frame on each microfiche shell contain the symbol \rightarrow (meaning "CONTINUED"), or the symbol ∇ (meaning "END"), whichever applies.

Maps, plates, charts, etc., may be filmed at different reduction ratios. Those too large to be entirely included in one exposure are filmed beginning in the upper left hand corner, left to right and top to bottom, as many frames as required. The following diagrams illustrate the method:



L'exemplaire filmé fut reproduit grâce à la générosité de:

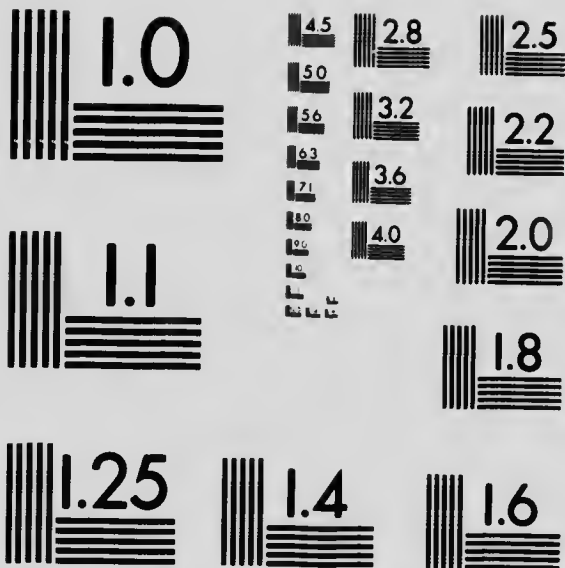
Toronto Public Library
North York Central Library
Canadiana Department

Les images suivantes ont été reproduites avec le plus grand soin, compte tenu de la condition et de la netteté de l'exemplaire filmé, et en conformité avec les conditions du contrat de filmage.

Les exemplaires originaux dont la couverture en papier est imprimée sont filmés en commençant par le premier plat et en terminant soit par la dernière page qui comporte une empreinte d'impression ou d'illustration, soit par le second plat, selon le cas. Tous les autres exemplaires originaux sont filmés en commençant par la première page qui comporte une empreinte d'impression ou d'illustration et en terminant par la dernière page qui comporte une telle empreinte.

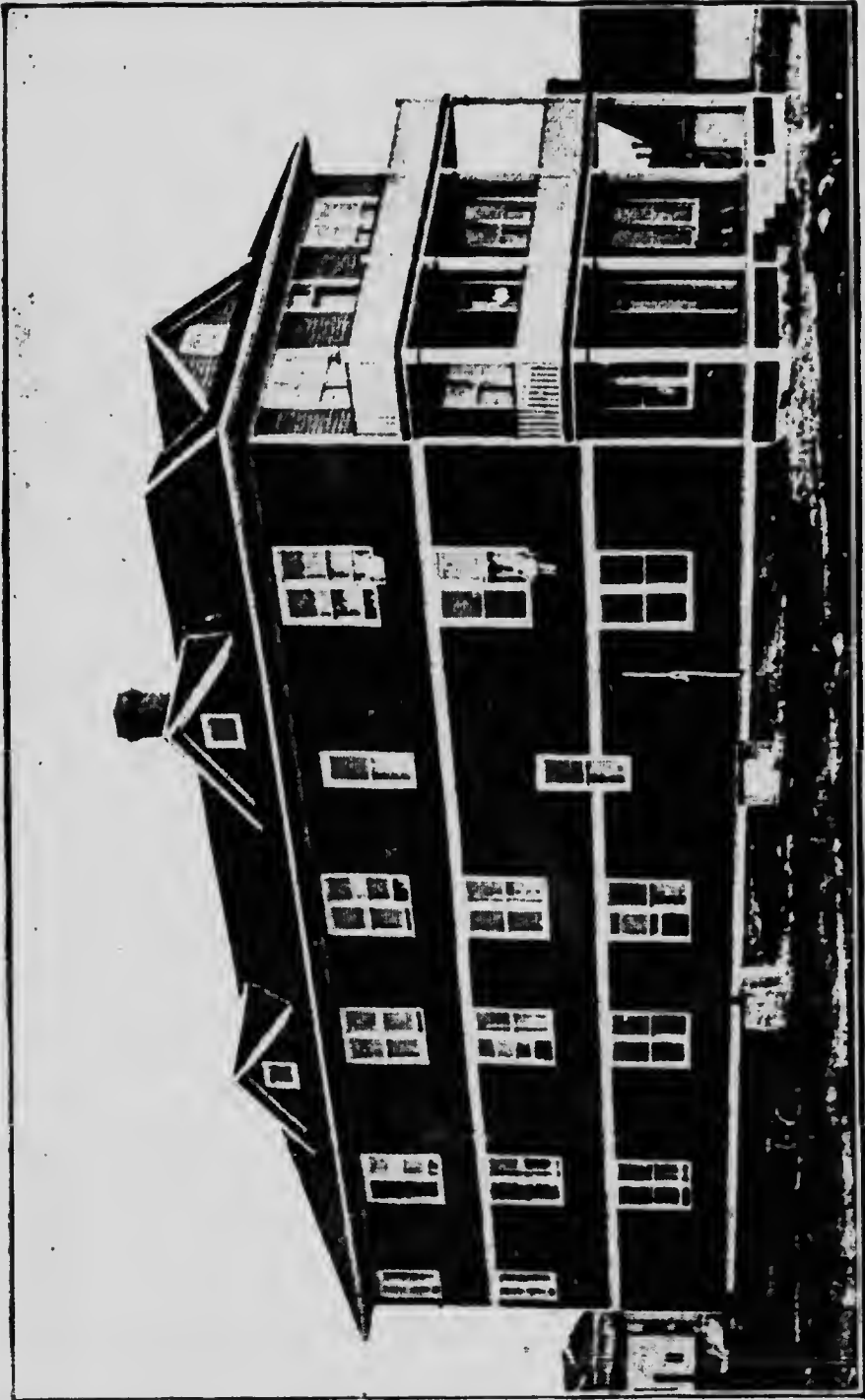
Un des symboles suivants apparaîtra sur la dernière image de chaque microfiche, selon le cas: le symbole \rightarrow signifie "A SUIVRE", le symbole ∇ signifie "FIN".

Les cartes, planches, tableaux, etc., peuvent être filmés à des taux de réduction différents. Lorsque le document est trop grand pour être reproduit en un seul cliché, il est filmé à partir de l'angle supérieur gauche, de gauche à droite, et de haut en bas, en prenant le nombre d'images nécessaire. Les diagrammes suivants illustrent la méthode.



MICROCOPY RESOLUTION TEST CHART
 NATIONAL BUREAU OF STANDARDS
 STANDARD REFERENCE MATERIAL 1010a
 (ANSI and ISO TEST CHART No. 2)





An Apartment House built by the North Battleford Town Council to find temporary accommodation for new arrivals. An experiment unprecedented in the Dominion. See pages 20, 34 and 53.

Opportunities in Saskatchewan

1913

Provincial Booklet Series

Containing Extracts
from
Heaton's Annual
The Commercial Handbook
of Canada

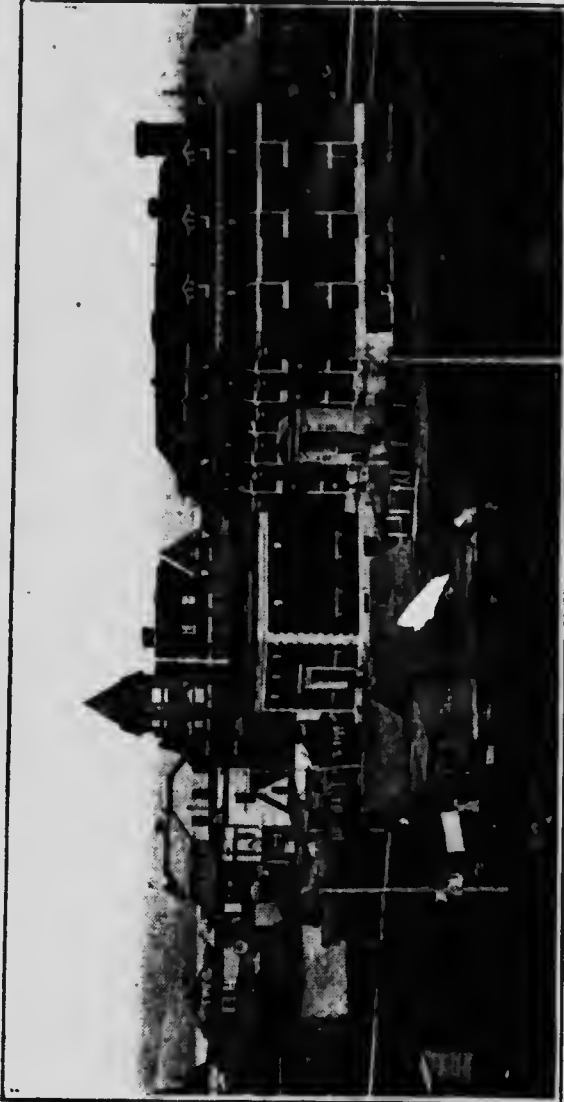


Heaton's Agency, Toronto

Copyright by Ernest Heaton
Toronto, 1913

the Dominion. See pages 20, 34 and 35.

You have neglected
an opportunity at **BATTLEFORD** Saskatchewan



TO WHOLESALERS AND MANUFACTURERS we offer power at cost, abundant water, free sites, generous concessions. See our special opportunities on page 19. For farmers, stock raisers, dairymen, poultry and market gardeners we have cheap land, abundant water, ample fuel, splendid markets, easy transportation.

See description of Battleford District on page 47. Write

The Commissioner, Board of Trade -- Battleford, Saskatchewan

OPPORTUNITIES

— IN —

SASKATCHEWAN

General Information

AREA. According to a statement compiled by the Department of the Interior, the land area in Saskatchewan is 143,927,680 acres, the area not covered by water in surveyed sections in June, 1912, was 67,731,760 acres. The unsurveyed area available for some form of agriculture, though of much less average value than the land surveyed, is estimated at 18 million acres.

CLIMATE. In summer the temperature often rises to 100 degrees. Winters are cold, lasting from end of November to middle or end of March. The atmosphere is clear and dry owing to the altitude, 3,000 ft. to 15,000. Snowfall is light. Bright sunshine is the rule. There are no blizzards, floods, earthquakes or cyclones. West and south of Swift Current chinook winds occasionally occur. Here cattle winter well on the range. The following table compiled for "Heaton's Annual" by the Meteorological Department at Toronto shows the mean average temperature and average annual rainfall in inches, at different points in Saskatchewan:

	Temperature	Rainfall
Indian Head.....	33.9	18
Moose Jaw.....	39.3	..
Moosomin.....	33.5	..
Perse.....	35.2	..
Prince Albert.....	32.1	16
Qu'Appelle.....	33.9	18
Regina.....	32.5	14
Saskatoon.....	32.5	14
Swift Current.....	38 3	16

GENERAL INFORMATION

DOMINION GRAZING LEASES. Grazing leases of Dominion Lands unsuitable for agricultural purposes may be secured in certain districts in the southwestern portion of the Province of Saskatchewan. Leases shall not exceed 21 years. Maximum area covered by a lease, 100,000 acres. Lands leased are not subject to homestead entry or sale, but the Minister of the Interior may cancel a leasehold, or any portion thereof, by giving 2 years' notice. The rental chargeable is 2c. per acre per annum. Applicant must own 1 head of cattle or 5 head of sheep for every 60 acres applied for. At the end of 3 years lessee must have 1 head of cattle or 5 sheep for every 20 acres leased, and must maintain stock in this proportion during the continuance of his lease. A map showing the sheep-grazing districts may be secured on application to the Secretary of the Department of the Interior, Ottawa. Apply to the Secretary, Department of the Interior, Ottawa.

DOMINION HOMESTEADS. Homesteads may still be obtained in many parts of the province. In the southeastern and central districts, where settlement is comparatively thick, homesteads are rather few and far between. The southwestern and western parts of the province have lately been receiving the great majority of the settlers. An approximate estimate made by the Department of the Interior for "Heaton's Annual" in September, 1911, gives surveyed homesteads available for entry in Saskatchewan at 88,700.

DOMINION HOMESTEADS—HOW TO MAKE SELECTION. Homesteads in the Prairie Provinces are being rapidly taken up. It is, therefore, practically impossible to make a selection by correspondence. First visit in person the office of J. Bruce Walker, Commissioner of Immigration, near the C.P.R. Station at Winnipeg. Here maps can be consulted and definite information obtained of Dominion Lands unallotted to date, the character of the soil, and a description of any district. Choose a locality and make alternative selections of homesteads, then apply to the Dominion Lands Agent in that locality.

DOMINION HOMESTEAD REGULATIONS. The land is surveyed into townships 6 miles square, divided into 36 sections of 640 acres each. Sections 11 and 29 are reserved for school purposes; sections 8 and 26 belong to the Hudson Bay Co. Other sections are available for homesteading. Any person who is sole head of a family, or any male over 18 years old, who is a British subject,

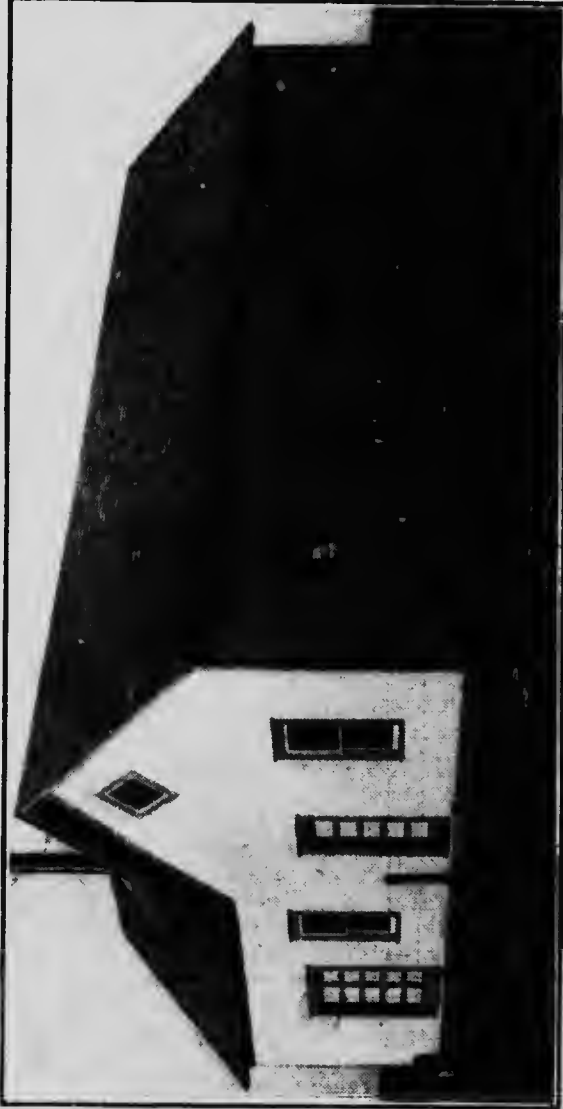
GENERAL INFORMATION

or declares his intention to become a British subject, or a widow with minor children of her own dependent on her for support, may homestead a quarter section (160 acres, more or less) of Dominion Lands in Saskatchewan. Applicant must appear in person at the Dominion Lands Agency or sub-agency for the district. Entry by proxy may be made at any agency for a father, mother, son, daughter, brother or sister, if eligible, and when duly authorized by the prescribed form. Duties: 6 months' residence and cultivation of land in each of 3 years. A homesteader may live within 9 miles of his homestead on a farm of at least 80 acres, solely owned and occupied by him or by his father, mother, son, daughter, brother or sister, or upon a homestead entered for and occupied by them within the prescribed distance. Before applying for patent, homesteader must break 30 acres and crop 20, part of work being done each year. If residing in vicinity, as stated above, he must break 50 acres and crop 30.

PRE-EMPTION. In some districts of Saskatchewan, a person who has secured a homestead may pre-empt an additional one-quarter section adjoining the homestead, or separated therefrom by only a road allowance, provided he has not before obtained a pre-emption under Dominion Lands Act. Entry fee, \$10. Duties: (1) Residence of 6 months in each of 6 years on either homestead or pre-emption. (2) Erection of a habitable house on either homestead or pre-emption. (3) Cultivation of 80 acres of either homestead or pre-emption. Price \$3 per acre, payable 1/3 at end of 3 years from date of entry, balance in 5 equal instalments with interest at 5%.

DOMINION SCHOOL LANDS. These comprise Sections 11 and 29 in every township in Saskatchewan. They are administered by the Dominion Government in trust for the province, and can only be disposed of by sale at public auction to the highest bidder, subject to a certain upset price. The sales are held yearly, provided the conditions are favorable, the lands being first inspected and valued to determine the upset price. Terms: One-tenth cash and balance in nine equal annual instalments, with interest at 5%. Scrip or warrants are not accepted in payment. There are no settlement conditions. Grazing permits for these lands are also granted annually at the rate of four cents per acre in Saskatchewan. Leases for coal mining are issued for a term of 21 years at a rate of \$1.00 per acre and subject to a Royalty of five cents per ton. The revenue from these lands is invested in

CANORA—A Great Mixed Farming District



The Canora Co-operative Creamery Co.'s Building

GET IN NOW

Dairy Farmers; Producers of Eggs, Poultry and Meat; Mechanics of all kinds; Industries; Investors.

Read descriptions of Town and District on pages 19 and 48. Write for further information to the

THE REASONS WHY

We have a Modern Creamery.
 Unlimited Markets with Profitable Prices.
 We will assist anything of merit.

SECRETARY, BOARD OF TRADE - CANORA, SASKATCHEWAN

Dominion Securities, and the interest thereon paid to the province yearly to be used for educational purposes. Approximate area of Saskatchewan School Lands sold to 1st April, 1910, 198,874.96 acres. Remaining unsold to same date, 8,240,014 acres. Average price realized for all Western Provinces for year ending 1st April, 1910, \$10.85 per acre.

DOMINION SCRIP—HALF-BREED SCRIP. Scrip has been issued to the half-breeds of the Western Provinces in satisfaction of claims arising out of the extinguishment of the Indian title. The scrip is a Government certificate entitling the grantee to personally locate 240 acres of land in Saskatchewan without conditions as to residence or improvements. Letters patent will be granted by the Crown for the lands selected to the entrant or his assignee. Scrip has also been issued to half-breeds redeemable at its face value in payment for Dominion lands. If land scrip is taken the purchaser should be careful to see that the land is located by the original grantee. The quantity obtainable is limited. Scrip is held for sale by bankers and brokers in the Western Provinces.

DOMINION SCRIP—VOLUNTEER SCRIP. Scrip has been issued by the Dominion Government for military services redeemable within a given time limit, entitling the grantee to locate lands in Saskatchewan, and to obtain a patent therefor. The time limit has expired in every case. An exception to the limit rule is the scrip issued to members of the Red River expeditions in 1870-71-72-73. Write Secretary Department of Interior, Ottawa.

FISHERIES. With increased railway facilities the fishing industry will become important. In the north the Great Lake trout run up to 60 lbs.; with whitefish, pike and perch, they form the bulk of the catch. In the south, whitefish, tullibee, pike, perch, yellow perch, buffalo fish and suckers are found. In the rivers goldeyes and other fish are taken by the angler and large sturgeon occur.

FRANCHISE. To vote for a member of the Dominion or Provincial Government it is necessary to be a native-born or a naturalized British subject, with 12 months' residence in Canada and 3 months in the province. In Municipal Elections, men and women of any nationality, being property holders, may vote even on such matters as taxation.

The Finest of
Clays

ESTEVAN

Inexhaustible
Coal



One of Estevan's Many Substantial Buildings
Estevan has the purest water; excellent transportation facilities, and low cost of living;
the finest of clays, and inexhaustible coal.
Read descriptions of Estevan and District on pages 23 and 49. For further information write
SECRETARY, BOARD OF TRADE - ESTEVAN, SASKATCHEWAN

LAKES. The lakes in Saskatchewan of more than 100,000 acres area are as follows:

	Area in Acres.		Area in Acres
Reindeer (part)	1,473,120	Buffalo.....	180,000
Athabasca (part)	1,152,480	Dore.....	155,000
Wollaston.....	580,000	Ile à la Crosse..	120,000
Cree.....	260,000	Cumberland.....	106,000
La Plonge.....	245,000	Quill.....	104,000
La Rouge.....	220,000		

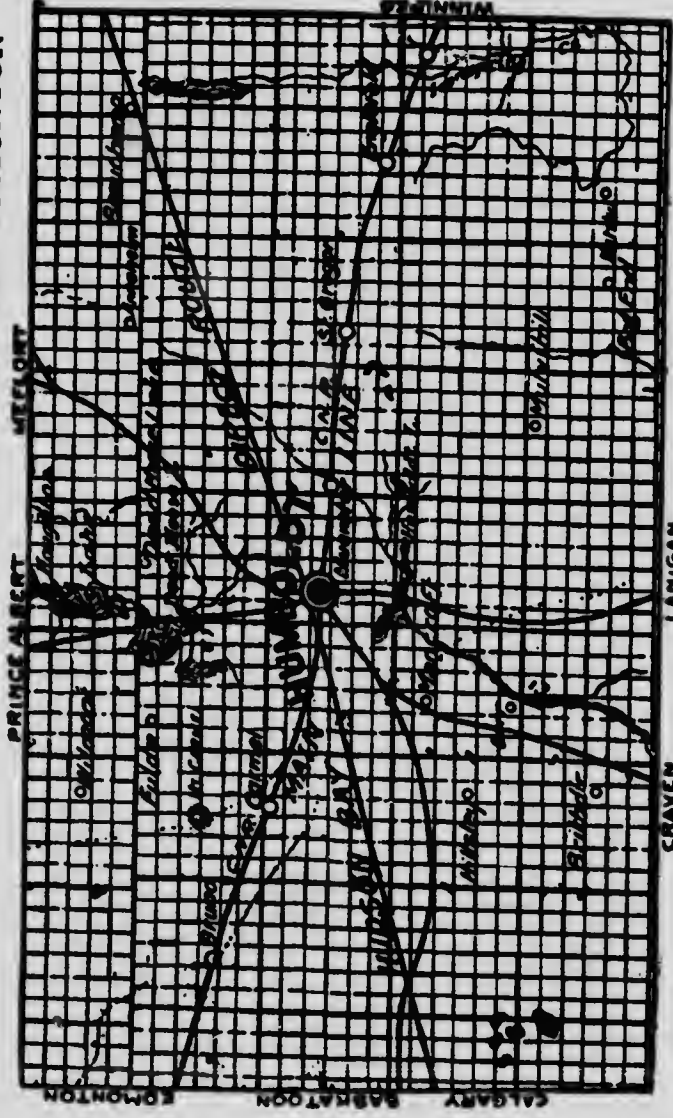
LATITUDE. The British Isles lie in the same latitude as the Province of Saskatchewan. Denmark, the Netherlands, Belgium, the greater part of Germany and about half of Russia, are as far north as Regina. Edinburgh is farther north than any of the settled parts of Saskatchewan. St. Petersburg, Russia, and Christiania, Norway, are in the same northern latitude as the northern boundary of Saskatchewan.

LUMBERING. North and east of Prince Albert, lumbering is extensively carried on. The northern forest contains white and black spruce, larch, jack pine, white poplar, balsam, white birch. The white spruce grows to a large size and is chiefly used in the manufacture of lumber. There are 4 lumber mills at Prince Albert, others at Sturgeon Lake, Crooked River, Greenbush and Etoimami. It is estimated that 8,619 workmen found employment in the lumber mills in 1911. The total output was valued at \$7,512,000. Sixteen planing mills had an output of \$1,391,648.

MANUFACTURES. According to statistics published by the Dominion Government, the value of manufactured products in Saskatchewan in 1910, as compared with 1900, was: In 1900, \$651,667; in 1910, \$6,332,132. In 1910, the total value of products in Regina was \$1,313,274; in Moose Jaw, \$738,813; in Saskatoon, \$683,277.

MINING. Bituminous shales occur near the Pas Mountain—Clay suitable for making bricks is found in many localities.—Lignites occur in the Souris field. At several points small seams have been opened up, but these were not of sufficient depth to encourage mining operations.—Gold dredging operations have been carried on in the N. Saskatchewan River above Prince Albert with some success.—Clay ironstone is found near the Cypress Hills, in the southwest.—Peat bogs have been found in the north, at Methy Lake and other places.—There is an extensive deposit of pigments near Duck Lake, and good samples

HUMBOLDT CENTRAL DIVISION, ON C.N.R. MAIN LINE,
BETWEEN WINNIPEG AND EDMONTON



Notice strategic railway location for industrial distribution and development. See pages 25 and 49. For full particulars write
COMMISSIONER, BOARD OF TRADE, - - HUMBOLDT, SASK.

of ochres are found about 100 m. north of Lloydminster and in other localities.—A salt spring exists in the Pasquia Hills, northeast of Prince Albert, and salt and sulphur springs are found in the west.—Sand suitable for glass making occurs northwest of Prince Albert.

POPULATION. According to the Dominion Census, the population of the province was 91,279 in 1901, 257,763 in 1906, and 492,432 in 1911.

PROSPECTING OPPORTUNITIES. The northern portion of Saskatchewan consists of pre-Cambrian rocks, in which in Ontario, Michigan and Minnesota rich silicon, copper, iron, gold, pyrite, mica and other mineral deposits have been found. Northern Saskatchewan is practically virgin territory for the prospector.

RIVERS. The province is traversed by the North and South Saskatchewan Rivers. In the farthest north is the Churchill River, emptying into the Hudson Bay; in the centre and south the Qu'Appelle and Souris Rivers.

RAILWAYS. In 1912 there were in Saskatchewan over 5,500 miles of railway in active operation, and over 1,500 miles under construction.

SPORT. The pronged antelope is not so plentiful as formerly, but there are still a number of herds in the rolling country in the southwest.—Black bear are found in the northern part.—Black tail and White tail deer are fairly general in the valleys and timbered sections of the province.—Of ducks and geese, many varieties abound in suitable localities.—Elk and moose are found in the timbered country in the north; there are good points east of Prince Albert along the C.N.R. main line to the Manitoba boundary.—Prairie chicken are common in prairie sections throughout the province.

TELEPHONE SYSTEM. In 1908 the Provincial Government purchased the plant of the Bell Telephone within the province. The Government has actively pursued the policy of stimulating the organization of local rural companies by giving to them as a bonus all the poles required for their lines. The experiment has proved a great success.

WAGES—AGRICULTURAL LABORERS. By the year, \$18 to \$30 per month, with board, averaging, say, \$25 for good men; for 8 months, \$25 to \$40 per month; for harvesting and threshing, \$35 to \$50 per month.

Agriculture

ALFALFA. The cultivation of alfalfa is attracting much interest in Saskatchewan. With the restriction of ranges by the inrush of wheat growers, the rancher must provide pasturage for his herd, and alfalfa restores fertility to the farm that is exhausted by wheat growing. The Government of Saskatchewan has offered \$6,300 in cash prizes for alfalfa growing. To a varying extent it is now grown on over a thousand farms in the province. In some cases the crop is being successfully matured, and yields heavy crops of seed. The plant does best on a light sandy loam in good heart over a deep, loose, alluvial subsoil. There appears to be no climatic reason why alfalfa should not be grown with great success throughout Saskatchewan. A report of the U.S. Dept. of Agriculture states that the plant is found in Verkloyausk, Siberia, in lat. 68 degrees n., where the subsoil remains permanently frozen. See Bulletin issued by the Railway Lands Branch, Dept. of the Interior, Ottawa, Ont. and write Deputy Minister of Agriculture, Regina, for Bulletin issued by committee in charge of the alfalfa growing competition.

BEEKEEPING. Can scarcely be called an industry in the province as yet. There are several apiaries in different parts. These are meeting with good success and make good returns.

CATTLE. In 1912, cattle numbered 770,500. The Live Stock Association is an active organization. The Winter Fair, including fat stock, stallion show and bull sale, held at Regina, Sask., is a great annual success.

DAIRYING. Abundant water and grass, and bluffs of trees are found in the eastern and northeastern districts. There are seven co-operative creameries under Provincial control, four private creameries and one private cheese factory. Total output of Government creamery butter in 6 months of 1911 was 706,000 lbs.

FARMING—COST OF IMPROVING LAND. The following is an estimate of the cost of farm development, where it is done by contract work. Breaking, 3 inches deep, per acre, \$3 to \$5; harrowing, each operation, per acre, 35c.; discing 3 times, per acre, \$1.50; seeding, not including seed, per acre, 60c.; seed, per bushel, market price; fencing per mile, 3 wires, \$100 to \$125; hauling grain from nearest station to land, per mile, per bus., $\frac{3}{4}$ c.; treating grain with bluestone or formalin, per bus. (but

not less than \$2). 3c.; boring wells, using steel casings, per ft., \$2.25 to \$3; boring wells, using galvanized casings, per ft., \$2 to \$2.75; cost of good work horse, \$150 to \$200; cost of milch cow, \$35; cost of sow for breeding, \$10. Coal varies with locality from 50c. per ton at mine, to \$6 per ton delivered at shipping point. A 6-roomed house, \$700; a stable to accommodate 6 horses, \$200; a cow shed to accommodate 8 head, \$400; implement shed, \$100; granary for 2,000 bus., \$100.

FARMING—COST OF STARTING. The following statement of the amount required to make a start has been approved by well-informed implement men, practical farmers and large farm land companies: 1 team horses, \$250 to \$400, according to weight; 1 set of harness, \$35 to \$40; 1 wagon, \$80 to \$90; 1 sleigh, \$35; 1 plow, \$28; 1 set harrows, \$20; 1 set disk harrows, \$35; 1 seeder, \$85; 1 mower and rake, \$95; 1 reaper and binder, \$170; other implements, \$50 to \$75; total, \$833 to \$1,073. Prices vary in different parts of the country. The settler might start with 4 cows, \$160; 4 pigs, \$15; 4 good sheep, \$20; poultry, \$10; total, \$250. Add to this household necessities.

FARMING—RENTING ON HALF SHARES. A farm is sometimes acquired at an agreed price on the following terms: The owner purchases the seed, pays half the threshing and half the twine; the purchaser does all the work and statute labor, and delivers to the nearest elevator half his crop until the farm is paid for.

FLAX. At present grown for the seed only, which is purchased by oil mills at Winnipeg and Chicago. The fibre is too short and of too poor a quality to be worked with profit by the old process. A process has been invented for treating Western flax, and it is claimed that demonstrations show that linens of good quality can be made therefrom. Flax is recognized as the best crop for breaking new ground. Production in 1911, 6,413,000 bush. (average per acre, 11.25); in 1912, 18,375,000 bush. (average per acre, 12.56).

FODDER CROPS. In 1911 the hay crop of Saskatchewan was estimated to be worth \$7,176,000. Prairie grasses, generally, were of two classes, viz.: "Prairie wool" and "alough" or "marsh" hay. Of the domestic hay, timothy occupied the greatest acreage. Rye and brome grasses were sown to a lesser extent. Clover, alsike, alfalfa and corn were reported in limited areas.

MELVILLE, SASK.



WE ARE SURROUNDED BY A SPLENDID FARMING COUNTRY

Melville prosperity is largely due to the rapidity with which the surrounding country is being settled.

See description of Town on page 50, of District on page 63. Write
SECRETARY, BOARD OF TRADE MELVILLE, SASK.

FRUIT GROWING. The smaller bush fruits grow in profusion all through the province, and an excellent quality is obtained. An insect has been stinging the currants when nearly ripe, causing them to drop. This seems to have disappeared. Larger fruits are in the experimental stage as yet. A good variety of early apples has been produced on the Experimental Farm at Indian Head. The market for larger fruits is still supplied by the Ontario and British Columbia fruit lands.

GRAIN CROPS, 1912. The December estimate of the yield of the 4 principal grain crops of Saskatchewan, prepared by the Provincial Department of Agriculture, is as follows:

	Acres Sown	Bushels Per Acre	Yield
Wheat.....	5,384,092	19.6	105,993,095
Oats.....	2,421,932	41.8	101,476,079
Barley.....	267,139	29.4	7,870,123
Flax.....	1,111,651	11.8	13,126,857

These figures compare with total yields in 1911 of the 4 grains of: Wheat, 96,796,588 bush.; oats, 98,676,270 bush.; barley, 6,859,804 bush.; flax, 10,377,701 bush. The yield per acre in 1911 was: Wheat, 18.50 bush.; oats, 45.0 bush.; barley, 28.0 bush.; flax, 11.3 bush.

HORSES. In 1911, there were 574,972 horses in the province, valued at \$91,995,520. The Government has a Stallion Enrolment Act which is of great benefit in aiding the farmers to secure well-bred stock. Clydesdales are the foremost breed in the province. Percherons make a good second. There are some Shires, Suffolk Punch and Thoroughbreds, but they are few in number when compared with the first-mentioned breeds. An Annual Exhibition is held at Regina, and is known as the Provincial Fat Stock Show. Spring Stallion Shows are also conducted by many of the Agricultural Societies. In the southwestern part of the province ranching is still carried on to a considerable extent. The horse-raising industry has been steadily increasing during the last few years, and gives great promise for the future.

POULTRY. In 1911, reports showed \$2,321,929 worth of all kinds of poultry in the province. While almost every farmer keeps some poultry, local markets command the entire output. The Provisional Poultry Association holds a very successful annual show at Regina every winter. In connection with the Government-operated creameries, poultry fattening stations are conducted

ROOTS AND VEGETABLES. Potatoes easily occupy the most important place among the root crops, representing at least 70% of the total acreage. Turnips and mangels are grown to some extent for feed. Sugar beets have proved very successful in some parts of the province. Practically all the smaller garden vegetables are grown, and excellent results are obtained. In 1911, 30,160 acres of potatoes were planted. The average yield was 170 bushels per acre; the total production, 5,127,200 bushels.

SHEEP. In 1912 there were 111,800 sheep in the province. There are a few pure-bred flocks. Leicester, Shropshire, and Oxford are the breeds represented. Few farmers keep sheep owing to the difficulty of guarding small flocks from coyotes and wolves. Ranching is carried on as in Alberta, flocks varying from 2,000 to 4,000. The Government have set aside certain districts where leases for grazing alone can be got. The sheep on the ranches are mostly Merino grades; the foundation flocks came from Montana. Shropshire, Oxford, Leicester and Lincoln rams are used. Few sheep are fattened during the winter in the province. It has been successfully tried on the wheat screenings at Moose Jaw.

SWINE. In 1912, there were 156,700 swine in the province. They are raised almost altogether for home consumption. No pork factories operate in the province, the local abattoirs using the entire output. Pork products (especially dressed bacon) are shipped in from the Winnipeg factories.

WINTER WHEAT. Sown in August, it grows to 6 or 8 inches in the fall, passes through winter without damage, and is ready for the reaper from 1st to 15th August. It does not shell when over-ripe. This bridges a harvest difficulty when help is scarce. In many parts of Saskatchewan it is accounted a safe annual crop.

Boards of Trade Register

This Register is revised every year and includes certified official returns from local Boards of Trade and the municipal authorities of towns where no Board of Trade is established. Information is given generally as received. The Editors reserve the right to use information obtained from other reliable resources and to edit the returns made, but they cannot, for obvious reasons, from their own knowledge, vouch for the absolute accuracy of every detail in each case. As a general rule, entries in this Register are confined to towns over 400 population in the West. Exceptions are made in special cases. Where possible, a reliable local reference is given, who will supply further information upon request.

ABBREVIATIONS.—Tel., Telegraph; Ex., Express; m., miles; Pop., population according to Returns of Census, 1911; Pop.*, estimate of Mayor or local Board of Trade; Alt., Altitude—ft. above the sea level. Altitudes are given as furnished by the Dominion Meteorological Office at Toronto.

POPULATION STATISTICS.—The rapid settlement of Western Canada makes it extremely difficult to give accurate population statistics. As a rule, the last Dominion Census figures are given. If these are misleading, wherever possible the figures are taken from local estimates, based on Assessment Returns or a Special Civic Census.

Chief Towns of Judicial District marked ¶

Towns represented among illus. Advts. marked †

ABERDEEN, on C.N.R. C.N.R. Ex. Tel. C.N.R. Tele-
phones, long dist., town and 5 rurals. Hotels, Aber-
and Florence \$2. 2 churches, 1 school, 1 bank, 2 lu
yards, 3 elevators, 1 flour mill and elevator, 3 livery sta.
club room. Pop. *300.

SPECIAL OPPORTUNITIES.—2 more elevators, creamery
cereal mill, 1 lawyer, 1 dentist, Write Sec. Bd. Trade.

ABERNETHY, on C.P.R. Kirkella branch, 325 miles from
Winnipeg. Dom. Ex. Tel. C.P.R. 3 churches, 5 ele-
vators (148,000 bushels), cement block plant, 2 lumber
yards, newspaper, 1 livery stable, several stores. Pop. *275.

SPECIAL OPPORTUNITIES.—Hotel. Write Sec.-Treas. of
Town.

ALAMEDA, on C.P.R. Estevan Branch, 132 miles s.e. of
Regina. Dom. Ex. Tel. C.P.R. Hotel Alameda.

Brick school, 2 churches. Industries, 5 elevators (160,000 bushels), telephone, 2 lumber yards, bank. Alt. 1,894. Pop. 283.

SPECIAL OPPORTUNITIES.—Flour mill, creamery, land mortgages, garage, machine shop. Write Sec. Alameda Progressive Club.

ALSASK, so named because it is situated on boundary between Alberta and Saskatchewan, 169 miles s.w. of Saskatoon, on C.N.R. (Goose Lake br., Saskatoon to Calgary). C.N.R. Ex. Tel. C.N.R. Hotel, Royal, \$2. 3 churches (Ang., Pres., Meth.), school, 1 bank, newspaper, 4 lumber yards, 2 liveries, 10 stores, 2 elevators. Sub-agency Dom. Lands for E. Alberta. Townsite owned by C.N.R. Pop. *400.

SPECIAL OPPORTUNITIES.—Doctor, bank, hotel. Write Sec. Bd. Trade.

ARCOLA on C.P.R. Arcola branch, 113 miles s.e. of Regina. Divisional point. Dom. Ex. Tel. C.P.R. Hotels, Arcola, Metropolitan. Public and high schools, 4 churches. Gravity system waterworks, electric light. Industries, 6 elevators (162,000 bushels), flour mill, brick plant, telephone, 2 lumber yards, aerated water works, machine shop, 2 banks, 1 newspaper, 3 livery stables, laundry, and several stores. Centre of Cannington judicial district, Land Titles bldg. Centre of wheat-growing district. Alt. 1,982. Pop. 794.

SPECIAL OPPORTUNITIES.—Sash and door factory, another general store, abattoir, creamery, tailor. Write Mgr. Union Bank.

ASQUITH, on C.P.R. and G.T.P., 28 miles from Saskatoon. Dom. Ex., Can. Ex. Tel. C.P.R. and G.T.P. Hotel, Arlington \$1.50. 4 churches (Ang., Pres., Bap.). Industries, 4 elevators (125,000 bushels), flour mill, newspaper, 2 livery stables, bank, fine town hall, brick school, and several stores. Pop. 200.

SPECIAL OPPORTUNITIES.—Lawyer, dentist, shoemaker. Write Mgr. Union Bank.

BALCARRES, on Brandon-Saskatoon br. C.P.R., and Melville-Regina br. G.T.P., 64 miles from Regina. Telephone, long distance, rural and local. Dom. Ex. Tel. C.P.R. Hotel, Balcarres \$2. Fine town hall, 3 churches, school, 2 lumber yards, newspaper, bank, 2 livery stables, 5 elevators, several stores. Pop. 348.

SPECIAL OPPORTUNITIES.—Grist mill, wagon repairer. Write Sec. Bd. of Trade.

BALGONIE, on C.P.R. main line, 18 miles e. of Regina. Dom. Ex. Tel. C.P.R. Telephone, long dist. and local. Hotel, King's \$2. 1 school, 3 churches, 5 elevators, 2 lumber yards, 2 livery stables, 1 bank, laundry, race track and ball grounds, flour mill, skating rink. Alt. 2,187. Pop. 368.

SPECIAL OPPORTUNITIES.—Creamery, flax mill. Write Mgr. Imperial Bank.

†**BATTLEFORD**, at confluence Battle and Saskatchewan Rivers, 90 miles from Saskatoon, 254 miles from Edmonton, on C.N.R. and G.T.P. Govt. local and long dist. telephones. Ex. C.N.R. and Can. Tel. C.N.R., G.T.P. Hotels, Windsor, King George, Queen's. Judicial centre, court house, Land Titles office, town hall, Dominion Lands office, Meteorological office, Indian Industrial School, R.N.W.M.P. Div. Flour mill, saw mill, brick plant, foundry, milk factory, 4 churches, high school, 2 pub. schools. Centre of fine mixed farming country, with clay for brick and tiles, sand and lime for cement blocks. Town owns electric lighting, waterworks and sewerage system. There is long water frontage. Alt. 1,620. Pop. *2,000.

SPECIAL OPPORTUNITIES.—Bottling plant, biscuit and candy factory, wholesale hardware, dry goods, furniture, fruits, shoe factory, clothing factory, packing plant, brewery, flour mill. Town offers free sites, low taxes. See under "Agric. and Fruit Districts" and illus. Advt. Write for free literature to Commissioner, Bd. Trade.

BIGGAR, on G.T.P. and C.P.R., 62 miles from Saskatoon. Can. Ex. Dom. Ex. Tel. C.P.R. Hotels, Biggar, Empire \$1.50. 4 churches (Ang., R.C., Pres., Meth.), public school. Pop. 315.

BROADVIEW, on C.P.R., 265 miles w. of Winnipeg. Dom. Ex. Tel. C.P.R. Hotels, Broadview, King Edward. 5 churches. Industries, 3 elevators (81,000 bushels), 2 oil cos., sewing machine co., creamery, fruit warehouse, brick plant, telephone, 2 lumber yards, newspaper, 2 livery stables, several stores. Alt. 1,960. Pop. *850.

SPECIAL OPPORTUNITIES.—Flour and grist mill, creamery, pork packing, dentist. Write Sec. Bd. Trade.

†**CANORA**, on C.N.R. main line and Russell-Rosburn br. Present terminus of G.T.P. Regina-Hudson Bay br. 303 miles n.w. of Winnipeg, 193 miles n.e. of Regina. Ex. C.N.R. and Can. Tel. C.N.R., G.T.P. Local and

NORTH BATTLEFORD, SASK.

THE OPEN GATEWAY TO THE LAST GREAT WEST



A Typical Farmer's Home in the North Battleford District.

There are thousands of acres of wonderful grain-growing country tributary to North Battleford. See descriptions of town and district on pages 34 and 53.

Write Commissioner, Board of Trade, North Battleford, Sask.

long dist. telephone. Hotels, Chateau Chamberlain (\$2 to \$2.50), Imperial, Canora. 4 churches, pub. school, 2 banks, 6 elevators (215,000 bushels). Agric. Society and Exhib. grounds (160 acres), race track, grand stand, \$50,000 hospital, \$10,000 municipal power house (rate 12c. per k.w. hour). Flour mill, egg-preserving industry, creamery, machine shop, woodworking plant, municipally owned elec. light plant, 2 lumber yards, 3 livery, 7 general stores, 1 wholesale fruit, 2 oil warehouses. An agricultural and mixed farming district. Pop. *1,200.

NOTE.—C.N.R. to H B. Jct. graded 1912. G.T.P. to Le Pas surveyed. \$22,000 city hall building. Iron foundry, galv. iron culvert factory and high pressure fire protection system will be in operation in 1913.

SPECIAL OPPORTUNITIES.—Fur manufacture, brick yard, flax mill, cereal mill, cement works, meat packing plant, dwelling and business houses to rent, mechanics' restaurant, lawyer, shoe and dry goods stores. Town assists new industries, in proportion to capital invested, by cheap sites, low taxes and elec. power. Write for free pamphlet to Sec.-Treas. Bd. Trade.

CARIEVALE, on C.P.R., 98 miles from Brandon. Dom. Ex. Tel. C.P.R. Hotel, Imperial. 3 churches (Ang., Pres., Meth.). Industries, 4 elevators (93,000 bushels), lumber yard, bank, 2 livery stables and several stores. Pop. 188.

SPECIAL OPPORTUNITIES.—Druggist, doctor. Write Sec. Bd. Trade.

CARLYLE, on C.P.R. Arcola br., 123 miles s.e. of Regina, and C.N.R. (div. point), Maryfield and Lethbridge br. Dom. Ex., C.N.R. Ex. Tel. C.P.R. Local and long dist. telephones. Hotels, Del Monte, Carlisle House. 4 churches (Ang., Pres., Bap., Meth.), 1 school. Industries, 5 elevators (152,000 bushels), 2 lumber yards, newspaper, public and high schools, stores. Summer resort at White Bear Lake, 8 miles north, with good fishing, hotel and 30 summer cottages. Alt. 2,064. Pop. 358.

SPECIAL OPPORTUNITIES.—Flour mill, creamery, wholesale houses. Write Sec. Bd. Trade, or Mgr. Union Bank.

CARNDUFF, on C.P.R. Estevan br., 106 miles s.w. of Brandon. Dom. Ex. Tel. C.P.R. Hotel, Avonmore \$2. 4 churches, public and high schools, town hall, opera house, grist mill, 2 lumber yards, 2 livery stables, newspaper, 5 elevators (126,000 bushels), court house, 1 bank. Alt. 1,723. Pop. 469.

SPECIAL OPPORTUNITIES.—Sash and door factory, planing mill, steam laundry, photographer. Write Sec. Bd. Trade, or Mgr. Merchants' Bank.

CARON, on C.P.R. main line, 17 miles w. of Moose Jaw. Dom. Ex. Tel. C.P.R. 3 churches, public school, 4 elevators (127,000 bushels), telephone, 2 lumber yards, bank, 2 livery stables. Heavy grain-yielding district. Alt. 1,841. Pop. 222.

†**CRAIK**, on C.N.R. Regina-Saskatoon-Prince Albert branch, 73 miles n. of Regina, 87 miles s. of Saskatoon. C.N.R. Ex. and Tel. Hotels, Waldorf \$2, European \$1.50. 3 churches (Ang., Pres., Meth.), public school, agricultural fair grounds with half-mile track, tennis courts, 2 banks, newspaper, 4 elevators (145,000 bushels), 3 livery stables, garage, 3 lumber yards, oil distributing warehouse, 4 implement warehouses, general and hardware stores. Good duck and prairie chicken shooting. Pop. 435.

SPECIAL OPPORTUNITIES.—Comparatively cheap farm lands. Write Sec. Bd. Trade.

DAVIDSON, on C.N.R. Winnipeg, Regina and Prince Albert line, 91 miles n.w. of Regina. C.N.R. Ex. Tel. C.N.R. Hotels, Great West, Davidson. 3 churches (Ang., Pres., Meth.), 1 brick school. Centre of magnificent wheat district. Pop. *600.

SPECIAL OPPORTUNITIES.—Brick making, mortgages. Write Mgr. Bk. of B.N.A.

DUCK LAKE, on C.N.R. Winnipeg, Regina and Prince Albert line, 38 miles s.w. of Prince Albert. C.N.R. Ex. Tel. C.N.R. 3 churches, 2 hotels, 2 elevators. 3 livery stables, 2 lumber yards, bank, 2 printing offices, and several stores. Alt. 1,645. Pop. 768.

NOTE.—400-barrel flour mill will be erected in 1913.

SPECIAL OPPORTUNITIES.—Creamery, cheese factory, mixed farming, factory sites on easy terms. Heavily wooded lands on open prairie, wild or partly improved. Write for free pamphlet to Sec. Bd. Trade.

ELFROS, on C.P.R., 120 miles e. of Saskatoon. Dom. Ex. Tel. C.P.R. Hotel, Golden West \$2. 3 churches, public school, town hall and fire station, concert hall, bank, 4 elevators, 2 lumber yards, laundry, 2 liveries, 3 general stores, boarding house. Pop. *175.

SPECIAL OPPORTUNITIES.—Harness maker, baker, dress-maker and milliner, lawyer. Write Sec. Bd. Trade.

ESTERHAZY, on C.P.R. Pheasant Hills branch, 63 miles from Kirkella, 6 miles from G.T.P. Dom. Ex. Tel. C.P.R. Hotel, Central \$2. 3 churches (R.C., Pres., Meth.), 1 school. Industries, 5 elevators (158,000 bushels), flour mill, lumber yard, bank, newspaper, 2 livery stables. Pop. 258.

SPECIAL OPPORTUNITIES.—Creamery, gents' clothing store, tailor, dressmaker, photographer, milliner, flour mill, grist mill, cheese factory, harness maker, blacksmith, veterinary surgeon, baker, hardware store. Write Mgr. Union Bk., or Sec. Bd. Trade.

ESTEVAN, on Souris River, on C.P.R. Soo-Spokane line, terminus of Estevan Sec., giving direct connection with Winnipeg, 290 miles e., 145 miles s.e. of Moose Jaw. Dom. Ex. Tel. C.P.R. Hotels, International, Empire \$2.50, Clarendon \$2, Windsor and Talbot. 7 churches, 3 public schools and collegiate inst., \$40,000 post office, \$20,000 town hall, 6 elevators (215,000 bushels), flour mill, 2 brick plants, municipal electric light plant, telephone, 3 lumber yards, 2 newspapers, 2 livery stables, 3 distributing implement warehouses, gas plant, up-to-date waterworks, sewerage and fire department. Estevan Coal & Brick Co. employ 125 men, 1912 output, 12,000,000 brick; Peterson & Bardsley Brick Co., 1912 output, 6,000,000. Estevan ships 15 million brick annually. Dominion Lands office. Alt. 1,860. Pop. *3,000.

NOTE.—In 1913 C.N.R. and G.T.P. and new main line C.P.R., Minneapolis to Spokane, expected.

SPECIAL OPPORTUNITIES.—Pottery, creamery, brick and cement plants, steam laundry, café, furniture, paper mill. See under "Agric. and Fruit Districts" and illus. Advt. Write Publicity Commissioner Bd. Trade.

FRANCIS, on C.P.R. Arcola branch, 40 miles s.e. of Regina. Dom. Ex. Tel. C.P.R. Hotel, Standard \$2. Industries, 4 elevators (118,000 bushels), electric light (private plant), telephone, 2 lumber yards, hotel, bank, newspaper, 2 livery stables, waterworks system, 2 churches (Pres., Meth.), public school. Pop. *400.

SPECIAL OPPORTUNITIES.—Flour and oatmeal mills, creamery, cement works, blacksmith, shoe shop, dentist, lawyer, furniture store, brick yard, dressmaker, grist mill, stonemason, contractor. Write Mgr. Bk. Hamilton.

GRENFELL, on C.P.R. main line, 280 miles west of Winnipeg. Dom. Ex. Tel. C.P.R. Hotels, Granite and King's \$2.00. 6 churches, public and high schools, 2 banks, 6 elevators (210,000 bushels), grist mill, flour mill, telephone

SWIFT CURRENT, SASK.

**A TOWN WITH
A BIG FUTURE**



Swift Current's rapidly growing railway centre and the largest initial wheat shipping point in Canada

The assessment in 1911 was \$3,019,202; in 1912 \$6,453,328—more than double.
The building permits for 9 months in 1912 amounted to \$6,453,328.
For descriptions of Swift Current and surrounding district see pages 41 and 59, and write to

SECRETARY, BOARD OF TRADE - - SWIFT CURRENT, SASK.

2 lumber yards, newspaper, armoury. Alt. 1,957. Pop. 709.

SPECIAL OPPORTUNITIES.—Butter and cheese factory, brick yard, improved and wild farm lands, first mortgages on farms and chattels. Write Sec. Bd. Trade.

GULL LAKE. on main line C.P.R., 144 miles w. of Moose Jaw. Dom. Ex. Tel. C.P.R. Hotels, Lakeview, Clarendon \$2. 2 churches (R.C., Meth.), Ang. and Pres. services. 5 lumber yards, 4 livery stables, several stores, 3 elevators, 5 restaurants, public school, 2 banks, sash and door factory. 2 parks. Pop. *860.

SPECIAL OPPORTUNITIES.—Flour mill, steam laundry. Write Sec. Bd. Trade.

HANLEY, on C.N.R. Winnipeg, Regina and P. Albert line, 122 miles n.w. of Regina. 40 miles s.e. of Saskatoon. C.N.R. Ex. and Tel. 3 churches, 1 school, with high school dept., 5 elevators (150,000 bushels), electric light plant. Alt. 1,869. Pop. *800.

SPECIAL OPPORTUNITIES.—Flour mill, jewellery store, furniture store, splendid farm lands adjoining. Write Sec. Bd. Trade.

HERBERT, on C.P.R. main line, 82 miles w. of Moose Jaw. Dom. Ex. Tel. C.P.R. Hotel, Herbert \$1. 2 banks, 3 restaurants, 3 lumber yards, 4 livery stables, 4 elevators, 1 grist mill, Citizens' Band, public school, 3 churches, newspaper, laundry, ice rink. Pop. *650.

SPECIAL OPPORTUNITIES.—Hotel, dentist, brick yard, veterinary surgeon, dairy, cobbler. Write Sec. Bd. Trade.

HEWARD, on C.P.R. Arcola branch, 80 miles from Regina. Dom. Ex. Tel. C.P.R. Hotel, Heward. 3 churches, school. 'Phone, long distance and local. 3 elevators (83,000 bushels), 2 lumber yards, newspaper, 2 livery stables, hotel, 1 bank, and several stores. Pop. *400.

SPECIAL OPPORTUNITIES.—Grist mill, flax mill, linseed oil mill, dentist, lawyer, etc. Write Agent C.P.R.

‡**HUMBOLDT,** on C.N.R. main line, 81 m. e. of Saskatoon. C.N.R. Ex. Tel. C.N.R. Div. point, with 10 m. of trackage and \$15,000 monthly ry. payroll. Hotels, Windsor \$2, Humboldt \$1.50. 3 restaurants, Govt. local and long dist. telephone. Judicial centre, court house, 3 churches, public and separate schools, business college, Dom. Lands office, 2 banks, fire brigade, hospital (30 beds), newspaper, 4 elevators (120,000 bush. capacity), large creamery, cold storage, Kerr & Adams Wood Mfg. Co., 3 lumber yards, 1 implement, 2 oil warehouses, machine

BOARDS OF TRADE REGISTER

shop, 2 auto garages, 3 livery stables, 2 dairy farms, 7 general stores and over 20 others, photographer. Wald-sea Lake (medicinal), 6 m., has fine bathing beach, swimming and canoe clubs, recreation grounds, etc.; public park, skating and curling rink, tennis courts, dramatic society, race track. In 1912, new buildings, \$225,000; assessment, \$1,161,271; bank clearings, \$3,403,871; civic improvements, \$166,800. Centre of fine agricultural and mixed farming district, supplying clay, sand and gravel. Pop. *1,600.

NOTE.—C.N.R. building from Melfort to Humboldt, connecting with Thunder Hill br. By-laws passed for municipal elec. light, water and sewerage. \$35,000 hospital, new post office, fire hall, market place and Masonic temple under construction. C.P.R. and C.N.R. have charters for br. lines passing through Humboldt.

SPECIAL OPPORTUNITIES.—Brick and cement plants, boarding houses, first-class restaurant and lunch counter, building contractors, banks, steam laundry, market gardening, machine shops, building investors, allied building trades, departmental store, flour and grist mill, wholesale houses, plumber, distributing warehouse, theatre, music seller, and band leader. Town owns industrial section, and offers free sites adjacent to ry. to industries and wholesale houses. See under "Agric. and Fruit Districts" and illus. Advt. Write for free literature to Commissioner, Bd. Trade.

INDIAN HEAD, on C.P.R. main line, 40 miles e. of Regina. Dom. Ex. Tel. C.P.R. Hotels, Imperial \$2, Balmoral \$1.50, Commercial \$1.50. 3 churches, 10 elevators (356,000 bushels), flour mill, electric light plant, telephone, 2 lumber yards, 2 newspapers, 3 livery stables, door and fanning mill factory. Dominion Experimental Farm and Forestry Farm situated here. Sewerage and waterworks system. Fine town park. Alt. 1,924. Pop. 1,285.

SPECIAL OPPORTUNITIES.—Aerated water factory, undertaker, hardware store. Town offers inducements to new industries. Write Sec. Bd. Trade.

IRVINE, on C.P.R. C.P.R. Ex. Tel. C.P.R. Hotel, general hospital. A quantity of coal and natural gas in neighborhood. Pop. *450.

KAMSACK, at confluence of Assiniboine and White Sand Rivers, div. point on C.N.R. main line. 275 miles w. of Winnipeg. Hotels, Russell, Windsor. 1 bank, 3 churches (Ang., R.C. and Pres.). 1 school. Fishing and hunting. Pop. 800.

SPECIAL OPPORTUNITIES.—Druggist, theatre, laundry, oatmeal, flour mill, brick yard, machine shop, sash and door factory. Write Sec. Bd. Trade.

KINDERSLEY, div. pt. on C.N.R. (Sask.-Cal.-Goose Lake br.), 126 miles s.w. of Saskatoon, 200 miles e. of Calgary. C.N.R. Ex. Tel. C.N.R. Hotels, Seymour, Kindersley \$2. 3 churches (Ang., Pres., Meth.), \$30,000 public school, 2 banks, 4 elevators (120,000 bushels), 7 lumber yards, 4 liverys, 3 garages, 2 newspapers, 6 implement warehouses, 3 oil cos., distributing warehouses, machine shop, 4 general stores. Assoc. football, hockey and baseball clubs, turf club, sub-agency Dominion Lands office, judicial centre, agricultural society, volunteer fire brigade. \$90,000 waterworks and elec. light plant (in construction). Assessment, 1911, \$437,820; 1912, \$833,170. Grain district, flax predominating. Pop. *900.

SPECIAL OPPORTUNITIES.—Flour mill, woodworking establishment, linseed oil mill, brick yard, shoemaker, market gardens, farm lands. Write Sec. Bd. Trade for free booklet.

LANGHAM, on C.N.R., 25 miles n.w. of Saskatoon. C.N.R. Ex. Tel. C.N.R. Hotels, Western, Central \$1.50, \$2. 4 churches (Ang., R.C., Pres., Mennonite), 2 banks, public school. Pop. *500. Write Sec. Bd. Trade.

LANIGAN, on C.P.R., 70 miles e. of Saskatoon. Dom. Ex. Tel. C.P.R. Hotel, Lanigan \$2. 3 churches (Ang., Pres., Meth.), telephone (local and long distance), public school, town hall, 3 elevators (95,000 bushels), 2 lumber yards, 2 banks, 2 livery stables, newspaper, race track, athletic ground, Dom. Lands sub-agency. Pop. *500.

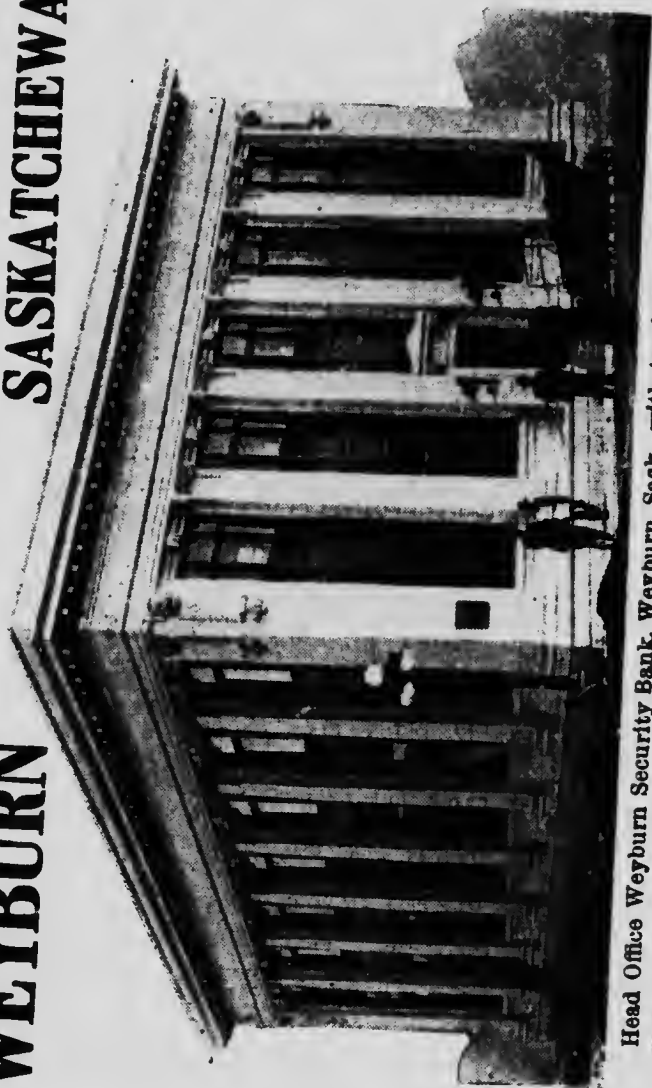
NOTE.—C.P.R. br. to Prince Albert in construction.

SPECIAL OPPORTUNITIES.—Flour mill, creamery, sash and door factory. Write Sec. Bd. Trade.

LASHBURN, on C.N.R. main line, 169 miles e. of Edmonton. C.N.R. Ex. Tel. C.N.R. Hotel, Imperial. Fine public school, magnificent church (of England). Rectory and Cottage hospital. Pres., Bap., and Meth. churches, public school, 1 bank, 2 chopping mills, 3 elevators, 2 lumber yards, 2 liverys, about 12 stores, 3 implement agencies. Pure-bred stock farm in neighborhood. 2 elevators (45,000 bushels), good water power within 5 miles for developing electrical power. brick clay found in abundance, fine agricultural land taken up largely by English and American farmers. Pop. *232.

WEYBURN

SASKATCHEWAN



Head Office Weyburn Security Bank, Weyburn, Sask., with ten branches in the Province. This city has shown greater progress in the last year than any other Western Canadian centre. Population in 1904 was 200 --to-day it is 5,000. Buildings erected in 1912 are valued at \$1,000,000. Postal and Customs receipts have more than doubled in the past year.

Read descriptions of Weyburn and District on pages 43 and 59. For information write

The Industrial Commissioner - - Weyburn, Saskatchewan, Canada

SPECIAL OPPORTUNITIES.—Creamery, flour mill, brick yard, cement works, meat canning factory, soap factory, wholesale houses, sash and door factory, and general cooperage, laundry, dairy. Municipality offers to industries every possible assistance. Write Mgr. Bk. Commerce.

LEMBERG, on C.P.R. Last Mountain section, 150 miles from Saskatoon. Dom. Ex. Tel. C.P.R. Hotels, Minto, American. 5 churches (R.C., Pres., Luth., Meth.), public and separate schools, 5 elevators, flour mill, 2 lumber yards, hotel, bank, livery stable, newspaper. Pop. 303.

SPECIAL OPPORTUNITIES.—Creamery (none within 80 miles), tailor, planing mill, electric lighting. Write Mgr. Union Bk.

LLOYDMINSTER, on C.N.R. main line, 170 miles e. of Edmonton, 200 miles w. of Saskatoon, on border line of Saskatchewan and Alberta. C.N.R. Ex. and Tel. Hotels, Royal George, Britannia, Alberta, all \$1.50. 5 churches (Ang., Pres., Meth., Bap., R.C.), 2 banks, 2 public schools. 2 concert halls, immigration hall, 2 flour mills (125 bbls. and 25 bbls.), theatre, Govt. creamery. Electric power plant, brick yard, cement brick works. Headquarters 22nd Saskatchewan Light Horse. \$40,000 public offices bldg. Fine shooting: prairie chicken, partridge, wild duck, geese, rabbits. Surrounded by good grain-growing and mixed farming district. Pop. *1,000.

SPECIAL OPPORTUNITIES.—Packing plant, steam laundry, sash and door factory, cooperage, another flour mill. Electric power at 15c. per k.w. hour. 8% first mortgages. Tailor, dentist. Write for town pamphlet to Publicity Commissioner, Bd. Trade.

LUMSDEN, on C.N.R. Win., Pr. Albert and Regina line, in Qu'Appelle Valley, 20 miles n.w. of Regina. Dom. Ex., Tel. C.P.R. Hotel, Lumsden \$2. 4 elevators (117,000 bushels), 3 churches, public school, opera house, local telephone, electric light plant, flour mill, 2 banks, newspaper. Centre of fine grain section. Last Mountain Lake 10 miles distant. Alt. 1,620. Pop. 695.

SPECIAL OPPORTUNITIES.—Cement block factory, good sand and gravel close by. Wrote Mgr. Union Bk.

MANOR, on C.P.R. Arcola branch, 132 miles s.e. of Regina. Dom. Ex. Tel. C.P.R. Hotel, King George. 3 churches, \$15,000 public school, \$12,000 bank building, \$12,000 post office, \$30,000 new hotel, long distance telephone 4 elevators (130,000 bushels). Pop. *350.

BOARDS OF TRADE REGISTER

SPECIAL OPPORTUNITIES.—Photographer, blacksmith, lumber yard, brick yard, dentist, good general store. Write Sec. Bd. Trade.

MAPLE CREEK, on C.P.R. main line in Qu'Appelle Valley, 86 miles e. of Medicine Hat. Hotels, Commercial, Jasper, Cypress, Maple Leaf. 4 churches, town hall, hospital, opera house, public school, 2 elevators, flour mill, 5 implement warehouses, 4 lumber yards, 1 newspaper, 5 livery stables, sash and door factory, 2 banks, water and sewerage system, elec. light plant. Alt. 2,495. Pop. *1,300. Write Sec. Bd. Trade, or Mgr. Merchants' Bk.

NOTE.—Town hall and armories to be completed in 1913

MELFORT, on Carrot River, 100 miles n.e. of Saskatoon, on C.N.R. Winnipeg to Prince Albert br. and C.N.R. Melfort to Humboldt br. C.N.R. Ex. C.N.R. Tel. Divisional point. Hotels, Melfort, Humboldt, Ozark. Centre of very fertile and well-wooded district; dominates trade of Carrot River Valley, where extensive lumbering is carried on. 4 churches, public and high schools, 2 banks, flour mill, newspaper, 2 chopping mills, 5 implement warehouses. Government creamery, Customs and Dominion Lands office. Good shooting. Pop. *834.

NOTE.—\$75,000 post office and \$55,000 school to be erected, and waterworks, electric light and sewerage systems to be installed in 1913.

SPECIAL OPPORTUNITIES.—Foundry, sash and door factory, jeweller, stationer, druggist, elevator, flour and feed mill. Write Sec. Bd. Trade, or Mgr. Bk. Hamilton.

†**MELVILLE** (founded 1908), on G.T.P. main line and Hud. Bay br., and Melville-Regina br. Div. point. 279 miles w. of Winnipeg. 96 miles n. of Regina. Can. Ex. Tel. G.T.P. Hotels, Windsor, Waverley, Melville. 5 churches, 3 public schools, Lutheran College, 2 banks, Massey-Harris and Imperial Oil Co.'s warehouses, and 2 brewing cos. Average monthly payroll at G.T.P. shops \$61,000. 2 elevators (65,000 bushels), flour mill (125 bbls.). Government telephone system, municipal electric light and waterworks, 2 parks, skating and curling rinks, race track, hospital, fire hall. Chief town in judicial district with resident judge. Nearest point on G.T.P. main line for Qu'Appelle Valley, providing good shooting, boating and fishing. Pop. (sworn town census, Nov. 1912), 2,561.

NOTE.—New railways chartered from Estevan and Watrous. Dominion Milling Co.'s 300 bbl. flour mill to be erected 1913, and municipal sewerage system.

SPECIAL OPPORTUNITIES.—Steam laundry, linseed oil factory, brick yard, butter and cheese factory. Free sites, trackage facilities, tax exemptions, etc., offered to new industries. See under "Agric. and Fruit Districts" and illus. Advt. Write Sec. Bd. Trade.

MILESTONE, on C.P.R., 54 miles from Moose Jaw. Dom. Ex. Tel. C.P.R. 6 elevators (152,000 bushels), electric light plant, telephone, 3 lumber yards, 2 banks, newspaper, 2 livery stables, 1 meat packing plant, confectioner, several stores. Pop. 436.

SPECIAL OPPORTUNITIES.—Flour mill, baker, dentist. Write Agent C.P.R.

MOOSE JAW, at junction of the Moose Jaw River and Thunder Creek, 308 miles w. of Winnipeg, 442 miles e. of Calgary. Div. pt. of the C.P.R. (payroll nearly \$250,000 per month). Terminal of the Soo-Spokane line from Minneapolis and St. Paul and of the Outlook Branch of the Canadian Pacific Railway, also terminal of the Maryfield Extension of the Canadian Northern Railway giving direct connection with southern Saskatchewan points, and on G.T.P. Ry. Dom. and C.N.R. Ex. Tel. C.P.R. and C.N.R. Hotels, Empress, Royal George, Cecil, Maple Leaf, Brunswick and City. Excellent parks and wide streets. Street Ry., a very fine collegiate institute, Dominion Lands office, Land Titles office, a customs port, 12 banks, 1 monthly and 2 daily papers. Maiz industries, flour and oatmeal mills, abattoirs, steel and bridge structural work, breweries, woodworking factories, sash and door factories, machine shops, marble works, hat factories, tannery and brick making, also a large number of small manufacturing concerns and over 40 wholesale houses. Neighborhood supplies excellent clay for clay products, gravel and lignite coal; district is also noted for flax production. Alt. 1,767. Pop. 25,000.

SPECIAL OPPORTUNITIES.—in all lines of commerce and industry, especially wholesale dry goods and wholesale hardware, linseed oil mill, cordage factory and agricultural implement factories and warehouses. Special concessions made to reputable concerns. Write Sec. Bd. Trade.

MOOSOMIN, inc. as town 1889, on main line of C.P.R., 87 miles w. of Brandon. Dom. Ex. Tel. C.P.R. Hotels, Queen's \$2.00 up. 5 churches, Government creamery, 2 banks, public school, high school, collegiate institute, centre of judicial district with resident judge. District

THE C.P.R. IS M



Port Arthur, Winnipeg, Calgary, Edmon

The C.P.R. TO-DA

Write for illustrated pamphlet describing
growth in the past, and ask for the latest d

*See descriptions of Wilkie and
These were up to date w*

**THE SECRETARY,
WILKIE - -**

MAKING WILKIE



Edmonton, Vancouver were made by the C.P.R.

D-DAY is Making Wilkie

describing the strategical position of Wilkie, its rapid
development. There is always something new.

See *Edmonton and Wilkie District* on pages 45 and 59.

date when this booklet was printed.

Y, BOARD OF TRADE
- - SASKATCHEWAN

headquarters for R.N.W.M.P. Centre of large mixed farming district. Pop. 1,143.

SPECIAL OPPORTUNITIES.—Steam laundry, improved lands near town for sale at \$10.00 to \$20.00. Write Sec. Bd. Trade.

NOKOMIS, at junction G.T.P. main line and C.P.R. Winnipeg to Saskatoon br. Dom. Ex. Tel. C.P.R. Hotels, Nokomis, Dominion \$2. 2 churches, 1 school, 5 elevators (65,000 bushels). 4 lumber yards, newspaper, machine shop, 2 banks. Pop. 374.

SPECIAL OPPORTUNITIES.—Creamery, flour mill, barber shop. Write Mgr. Bk. Commerce.

NORTH BATTLEFORD, on C.N.R. main line Winnipeg to Edmonton, 254 miles e. of Edmonton, at junction of Saskatchewan and Battleford Rivers. Divisional point. C.N.R. Ex. Tel. C.N.R. Long distance telephone. Hotels, Saskatchewan, Clarendon, Grand Central, Metro-pole, \$2 up. 5 churches, public and separate schools, \$121,000 collegiate school, town hall, railway shops, C.N.R. monthly payroll \$50,000, 4 banks, 1 elevator (25,000 bushels), grist mill (150 bbls.) sash and door factory, foundry, aerated water works, brick plant, cigar factory, cement block and tile factory, electric light and power, water and sewerage system are owned by town. \$224,630 spent on improvements 1911; \$162,500 passed for 1912. Pop. in 1911, 2,105; in 1912, *5,000.

NOTE.—2 C.N.R. branches under construction.

SPECIAL OPPORTUNITIES.—Steam laundry, brewery, flour mill, linseed oil mills, tannery, furniture store, hardware store, etc. Power at cost. Concessions to manufacturers. See under "Agric. and Fruit Districts" and illus. Advt. For booklet and town map, write Industrial Commissioner.

OSAGE, on C.P.R., 55 miles s.e. of Regina. Dom. Ex. Tel. C.P.R. Hotel, Palace. 4 elevators (110,000 bushels), 2 lumber yards, bank, livery stable, public school, 2 churches. Pop. *165.

OUTLOOK, on S. Saskatchewan River, 119 miles from Moose Jaw, terminus of Moose Jaw-Lacombe branch of C.P.R. Dom. Ex. Tel. C.P.R. Hotels, Outlook, Avenue \$2. 3 chartered and 1 private banks, 3 churches (Ang., Pres., Meth.), 4 elevators, 3 lumber yards, 4 livery stables, flour mill. C.P.R. are erecting million dollar bridge. Good wheat district. Pop. 679.

SPECIAL OPPORTUNITIES.—Creamery, brick and cement plants, butcher. Write Sec. Bd. Trade.

OXBOW, beautifully situated on a hill above the Souris River, on C.P.R., 41 miles from Estevan. Dom. Ex. Tel. C.P.R. Hotel, Alexandra. 4 churches, 2 schools, 6 elevators (200,000 bushels), 2 lumber yards, newspaper, 2 livery stables and several stores, 2 banks. Alt. 1,895. Pop. *850.

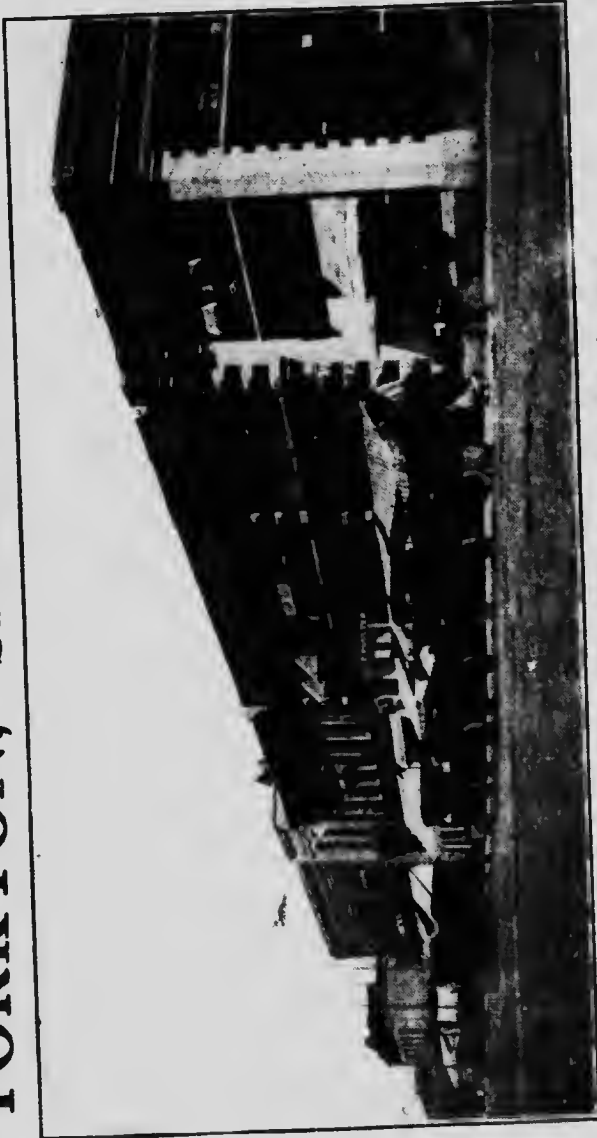
SPECIAL OPPORTUNITIES.—Flour and feed mill, creamery. Write Mgr. Union Bk.

PRINCE ALBERT, on North Saskatchewan, terminus of three lines C.N.R., G.T.P. and C.P.R. branches will reach city this year. C.N.R. Ex. Tel. C.N.R., C.P.R. Government long distance and local telephone. Steamers on North Saskatchewan. Hotels, Windsor, Avenue, Prince Albert, Queen's, Royal, Saskatchewan, Merchants, Empress, St. Regis. R.C. cathedral, Anglican pro-cathedral, and Pres., Meth., Bapt. and Lutheran churches. 4 public schools, 1 separate school, collegiate institute, convent, 1 ladies' college, 1 business college, Catholic hospital, Victoria hospital, mechanics' institute, 4 theatres, 3 large lumber companies (cut for 1910-11, 100 million bd. feet), 4 brick plants, brewery, 3 flour mills, 2 daily newspapers, cold storage plant, 3 planing mills, boatbuilding factory, saddlery factory, 2 laundries, factory culinary articles, extracts, etc.; marble and granite works, 4 wholesale houses, electric light, waterworks, sewerage system, electric power, 15,000 h.p. at falls 26 miles distant to be developed. Centre of judicial district. Dominion Lands distributing customs, provincial jail and penitentiary. Headquarters of R.N.W.M.P. for Central and Northern Saskatchewan. 2,000 square miles spruce and poplar extend northward from here. A picturesque city with boating, bathing, fishing, shooting, etc. 2 large natural parks. Alt. 1,432. Pop. (Police Census), 12,280.

SPECIAL OPPORTUNITIES.—Development of hydro-electric power, pulp and paper mills, furniture, box, woodenware and match factories. Large flour and oatmeal mills for shipment via Hudson Bay route, wholesale and distributing houses. Write for free pamphlet to Sec. Bd. Trade.

QU'APPELLE, on C.P.R. main line, 32 miles e. of Regina. Dom. Ex. Tel. C.P.R. Hotels, Leland House, Queen's \$1.50 and \$2. 4 churches, public and high schools, 2 banks, 4 elevators (120,000 bushels), electric light plant, 1 lumber yard, 1 newspaper, 3 livery stables. Town is surrounded by beautiful trees. Land here is rich clay loam, well adapted for mixed farming. Alt. 2,134. Pop. 850. Write Mgr. Northern Crown Bk.

YORKTON, SASKATCHEWAN



Broadway. One of Yorkton's Busy Streets.

A commercial and judicial centre. See description of town, page 46. The grain centre of Western Canada. See description of district, page 59. Write for very complete, illustrated booklet to

THE SECRETARY, THE BOARD OF TRADE - YORKTON, SASK.

RADISSON, on C.P.R. main line, 44 miles s.e. of North Battleford. C.N.R. Ex. Tel. C.N.R. 4 churches, school, 2 lumber yards, large flour mill, 4 grain elevators, stores in leading lines. Good grain-growing country. Pop. 305.

SPECIAL OPPORTUNITIES.—Dentist, lawyer, good carpenters or mechanics Write Sec. Bd. Trade.

REGINA, the capital of Saskatchewan, on C.P.R. main line. Terminus C.P.R. Brandon and Arcola branches; terminus of the C.N.R. southern main line from Winnipeg and Brandon, and Prince Albert line. G.T.P. Melville to Yorkton. C.P.R. branch under construction from Regina to Bulyea. Dom. Ex., C.N.R. Ex. Tel. C.P.R., C.N.R. Hotels, King's, Wascana from Regina, Alexandria, Clayton, Lansdowne, Palmer, Royal, Victoria, Vons. Parliament bldgs., headquarters R.N.W.M.P., 2 hospitals, 15 churches, 10 public schools, 1 collegiate, 1 normal school, Meth. college. Industries, grist mill, flour mill, 3 sash and door factories, 2 foundries, machine shops, soap works, brewery, cement block plant, grain cleaner factory, pressed brick factory, 6 elevators (215,000 bushels), wire and steel works, tanning, 3 aerated water factories, cigars, gasoline tractors, abattoir, petrified stone, mattress factory, electric power supplied 7c. per M k.w. hour for small consumers and 5c. per M k.w. hour to large consumers. City owns electric light plant and waterworks Well-paved streets, large spaces reserved for park purposes. Principal distributing point for Middle West. Annual volume of business over \$10,000,000; wholesale grocers, hardware, furniture, builders' supplies, etc. Neighborhood supplies wheat, oats, flax, cattle, etc. Alt. 1,885. Pop. (1913), *45,000.

NOTE.—2 colleges (Cath., Pres.), and \$1,000,000 hotel under construction.

SPECIAL OPPORTUNITIES —Factories: Felt hats, straw hats, oil lamps, furniture, shirts and collars, linseed oil, cereal foods, wholesale paint and glass, matches, buggies and wagons, paper boxes, biscuits, binder twine, vinegar, glue, cement tile pipe, dairy mill, flour mill. City owns large number of lots in wholesale and warehouse section, which will be sold to new industries on very favorable terms. Write Sec. Bd. Trade, or Industrial Commissioner.

ROSETOWN, on C.N.R. (Goose Lake br. Cal. & Sask. line), and C.P.R. (Moose Jaw-Edmonton line), 72 miles s.w. of Saskatoon. C.N.R. Ex., C.P.R. Ex. Tel. C.P.R., C.N.R. Long distance 'phone. Hotels, Albion \$2.50, Rosetown \$2.

3 churches (Ang., Pres., Meth.), and R.C. services. 4 elevators (120,000 bushels), flax decorticating mill, machine shop, elec light, 3 banks, public school, newspaper, 4 lumber yards, 3 liverys, 1 garage, 2 oil distributing warehouses, 5 implement warehouses, skating rink, 2 fire engines. A good grain country, flax predominating. Pop. *1,000.

SPECIAL OPPORTUNITIES.—Flour mill, linseed oil mill, cement block works, dentist, furniture store. Write Sec. Bd. Trade.

ROSTHERN, on C.N.R. Win., Regina, Prince Albert line, 50 miles n. of Saskatoon. C.N.R. Ex. Tel. C.N.R. Hotels, Queen's, Occidental. 8 churches, 2 schools, opera house, court house, 2 banks, brick yard, 2 flour mills, Government telephone plant, gas plant, 6 elevators. Government Experimental Farm. Pop. 1,172.

SPECIAL OPPORTUNITIES.—A foundry, Write Sec. Bd. Trade.

ROULEAU, on C.P.R., 32 miles from Moose Jaw. Dom. Ex. Tel. C.P.R. Hotel, Arlington. 3 churches (Ang., Pres., Meth.), 1 public school, 5 elevators (237,000 bushels), telephone, 2 lumber yards, newspaper, 3 livery stables, 2 restaurants, machine shop, oil storage tanks, 2 banks, municipal waterworks and electric light plant. Pop. *900.

SPECIAL OPPORTUNITIES.—Flour mill, electric light plant. Write Sec. Bd. Trade.

SALTCOATS, on Saltcoats Lake, on C.P.R. Winnipeg-Edmonton br. line, 17 miles s.e. of Yorkton. Dom. Ex. Tel. C.P.R. Hotel, Queen's \$1.50. 3 churches, public and high schools, 3 grain elevators, 1 grist mill, cement block works, 2 lumber yards, 3 livery stables, 1 garage, 2 banks, 2 restaurants, local and long dist. telephones, municipal elec. light works. Agric. Soc. holds annual fair. Skating rink, town band (14 pieces). Alt. 1,714. Pop. *600.

SPECIAL OPPORTUNITIES.—Sash and door factory, brick yard (clay deposits $\frac{1}{2}$ mile distant), dentist, photographer, lawyer, mason, bricklayer. Write for free illus. booklet to Sec. Bd. Trade.

SASKATOON, on S. Saskatchewan River, on C.P.R., C.N.R. and G.T.P., 466 miles w. of Winnipeg, 160 miles n. of Regina. 3 Ex. Cos. Hotels, King George, Baldwin, room with bath \$1.50, Flannagan, Empire, Western \$2.50, and 7 others. Court house, 14 churches, 7 large public schools and 3 more under construction, \$125,000 collegiate institute, opera house, customs house, Dominion Lands office, Lands Titles office, 15 banks, 2 hospitals, 2 daily

and 3 weekly newspapers. Industries, sash and door factory, brewery, 2 flour mills, 3 woodworking factories, interior woodworking factory, 2 cement block plants, brick plants, tent and mattress factory, cigar factory, 2 aerated water and bottling factories, saw mill, nursery, roofing and cornice works, 2 machine shops, 3 foundries, etc. Town owns electric light and power, water and sewerage systems, automatic telephone system. There are over 200 wholesalers located here, 50 being in the implement trade. Seat of provincial university, agricultural college and experimental farm, building proceeding rapidly. Classes held in temporary premises. Electric Street Ry. will have 11 miles in operation in 1913. 400 acres city parks. Pop. 113 in 1901; Pop. (Sworn Civic Census, Oct., 1912), 27,527.

SPECIAL OPPORTUNITIES.—Soap factory, packing and cold storage plant, flour and cereal mills, tannery, shoe factory, harness factory, foundry and machine shop, jobbing houses in all lines; power can be had at minimum of \$45.00 per h.p. per annum. Scheme for development river power at cost of \$700,000 is now in process. Opportunities also for oil mills, market gardens, poultry farms. \$1,000,000 subscribed in 4½ days towards Industrial League for promoting manufactures. Write Commissioner, Bd. Trade.

SCOTT, on G.T.P., 103 miles w. of Saskatoon. Can. Ex. Hotels, Gladys, Queen's. 3 churches (Ang., R.C., Pres.). \$16,000 public school, hospital, waterworks, sewerage, electric light, opera hall, town hall, weekly newspaper, 2 banks, telephone, 3 lumber yards, 3 implement firms, etc. Pop. *700.

SPECIAL OPPORTUNITIES.—Flour mill. Town offers tax exemption, free sites, light and water for 10 years. Write Sec. Bd. Trade.

SINTALUTA, on main line of C.P.R., 53 miles from Regina. Dom. Ex. Tel. C.P.R. Hotel, Saskatchewan \$1.50. 3 churches, public school, 7 elevators (224,000 bushels), telephone, lumber yard, bank, planing mill, newspaper, stores, 3 implement firms, 2 banks, etc. Pop. *500.

SPECIAL OPPORTUNITIES.—Flour mill. Write Mgr. Union Bk.

STOUGHTON, on C.P.R. Arcola-Regina and Stoughton-Weyburn brs., 86 miles s.e. of Regina. Dom. Ex. Hotels, King Edward \$2, Stoughton \$1.50. 2 churches, 4-room school, town and fire hall, 5 elevators (175,000 bushels).

YOUNG — Where Farmers Use Modern Methods



Breaking a portion of 8,000 acres on Middleton Pure Seed Farms near Young, Sask.
 Improved farms in Young District cost from \$20 to \$35 per acre. Average wheat yield 23 bushels per acre. Homestead Lands are available in this District.

Read descriptions of Young and District on pages 46 and 61.

For illustrated literature and further information write

SECRETARY, BOARD OF TRADE - YOUNG, SASKATCHEWAN

2 lumber yards, 2 liveries, bank, newspaper, 3 hardware, 2 general stores. Good wheat district. Pop. *500.

SPECIAL OPPORTUNITIES.—Grist mill, creamery, dentist. Farm lands at reasonable prices. Write Sec. Bd. Trade.

STRASSBURG, on C.P.R., in the heart of Last Mountain Valley, 55 miles from Regina. Dom. Ex. Tel. C.P.R. Hotels. Strassburg, Last Mountain. 4 churches, 1 brick school, 3 elevators (93,000 bushels), 3 lumber yards, newspaper, 3 livery stables, several stores. Pop. 811.

†**SWIFT CURRENT**, on Swift Current Creek and C.P.R. main line, divisional point, 153 miles w. of Regina, C.P.R. branches to N.W. and S.E. Dom. Ex. Tel. C.P.R. Government telephone. Hotels, Empress, Alexandra, Imperial, Reliance. Customs house, Dominion Lands office. 4 theatres, 5 churches, public and high schools, public park, 8 banks, 7 elevators, telephone, 7 lumber yards, 5 wholesale houses, steam laundry, 1 daily, 2 weekly newspapers, 6 livery stables, brewery, wire fence factory, 1 flour mill, good farming section. Municipality owns waterworks, sewerage, hospital and electric light. \$450,000 spent on improvements last year. Distributing centre for 3,000 sq. miles, marketing 1,500,000 bushels of wheat in 1911, fast becoming an important railway centre. Assessment, 1911, \$3,019,202; 1912, \$6,453,328. Bldg. permits, 1912 (9 mos.), \$699,580. Alt. 2,423. Pop. *4,350.

NOTE.—C.N.R. and G.T.P. expected in 1913.

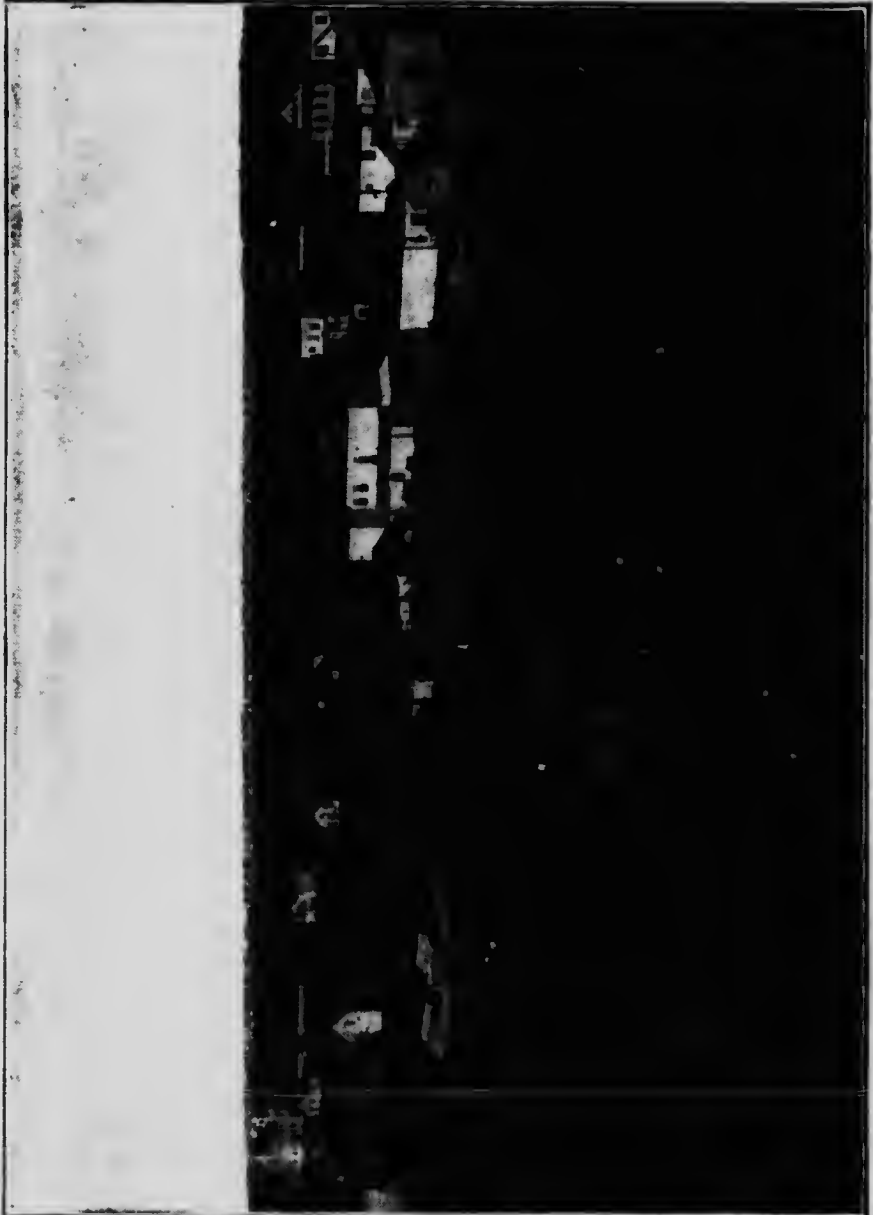
SPECIAL OPPORTUNITIES.—Wholesale groceries, distributing houses, brick yard, sash and door factory, foundry and machine shop, brewery. Elec. power 12c. per k.w. hour. See under "Agric. and Fruit Districts" and illus. Advt. Write Sec. Bd. Trade.

UNITY, on G.T.P. and C.P.R., 118 miles from Saskatoon. Dom. Ex., Can. Ex. Hotel, Unity \$1.50. Pres church, school, theatre, fire hall. Pop. *149. Write Sec. Bd. Trade.

VONDA, on C.N.R. main line, 35 miles e. of Saskatoon. C.N.R. Ex. and Tel. 2 hotels, 2 schools, 3 churches. Pop. *500.

SPECIAL OPPORTUNITIES.—Flour mill. Write Sec. Bd. Trade.

WADENA, on C.N.R. main line, 60 miles s.e. of Humboldt. C.N.R. Ex., Dom. Ex. Tel. C.N.R. Hotel, Wadena. 3 churches, 1 school, 1 bank, 3 elevators, 3 livery stables, 2 restaurants, about 16 stores, 1 creamery, 1 laundry. Fine farming district. Four lakes within 20 miles radius. Pop. *529.



Humboldt is an attractive and pleasant place to live in. See descriptions of Humboldt and District on pages 25 and 49, also announcement under heading "Humboldt District-- The John Adams Realty Co., Ltd.," on page 63.

SPECIAL OPPORTUNITIES.—Grist mill, brick yard. Write Sec. Bd. Trade.

WAPPELLA, on C.P.R. main line, 110 miles e. of Regina. Dom. Ex. Tel. C.P.R. Hotels, Commercial \$1.50; Queen's \$1. 3 churches (Ang., Pres., R.C.), public school, 6 elevators (178,000 bushels), telephone, 2 lumber yards, newspapers, 3 livery stables, 1 bank. Alt. 1,930. Pop. 485.

SPECIAL OPPORTUNITIES.—Flour mill, pork packing (building erected but vacant), tannery, sash and door factory, lawyer, dentist. Write Mgr. Union Bk.

WARMAN, on C.N.R. at crossing main line, and Win., Regina and Prince Albert line, 65 miles n.w. from Humboldt. C.N.R. Ex. Tel. C.N.R. First-class wheat district supplying glass sand, limestone, brick clay. Power can be developed from river, 3 miles. Pop. 149

WATROUS, divisional point on G.T.P., half-way between Winnipeg and Edmonton. Hotels, Tourist, Manitou. 5 churches, \$23,000 school, 2 banks, 3 elevators, elec. light and power co., waterworks, sewerage. Manitou Lake 3 miles distant, 14 miles by $\frac{3}{4}$, is becoming known as a tourist and health resort. Pop. *1,300.

SPECIAL OPPORTUNITIES.—Flour mill, laundry. Write Sec. Bd. Trade.

WATSON, half-way between Winnipeg and Edmonton, on C.N.R. C.N.R. Ex. Tel. C.N.R. 2 hotels, 2 elevators, 2 lumber yards, bank, 2 livery stables, 12 stores, 1 printing estab., 2 elevators, 1 creamery, newspaper, public and separate schools, 2 churches (R.C., Pres.). Centre Big Quill Plains district. Sand and brick clay in district. Pop. *250. Write Sec. Bd. Trade.

†**WEYBURN**, on Souris River, on C.P.R. main Soo line, and Winnipeg to Lethbridge br., and G.T.P. to Regina, 315 m. w. of Winnipeg, 125 m. s. of Regina. C.P.R. div. point. Dom. Ex. Tel. C.P.R. Hotels, Royal, Soo, Waverley. \$2. 6 churches, 4 public schools, collegiate, 2 hospitals, 6 banks (including Weyburn Security Bk. H.O.), cement works, flour mill (150 bbls. per day), 6 elevators (210,000 bushels), creamery, sash, door and glass factory, bottling works, foundry, machine, brick and tile factory, municipal elec. light and power plant, rate 5c. per k.w. hour, 20 wholesale distributors, 2 newspapers, customs house, good wheat market, water and sewerage systems, 7 lumber yards, large dept. store, cluster street lights, R.N.W.M.P. Alt. 1,847. Pop. *4,750.

NOTE.—G.T.P. branch, Brandon to Lethbridge, and C.N.R. from south, under construction.



An Oat Field in the Melville District, see page 53. Read announcement on page 63, headed "Melville District - The J. Rowan Co.,"

SPECIAL OPPORTUNITIES.—Oil mills, furniture, biscuit, clothing, glove, twine and cordage, and cereal food factories, tannery, wire fence works. Free sites for new industries. Write Industrial Commissioner, Bd. of Trade.

WHITEWOOD, on C.P.R. Broadview Section, 250 miles w. of Winnipeg. Dom. Ex. Tel. C.P.R. Hotels, Woodbine \$1.50, Armstrong \$2. 4 churches, 1 school, 1 bank 4 elevators (103,000 bushels), telephone, 2 lumber yards, newspaper, 2 livery stables, 3 general stores, 3 implement warehouses, \$7,000 curling and skating rink, fishing at Round Lake, 16 miles. 35,000 sq. ft. granolithic pavement laid 1911. A grain-growing and mixed farming district. Alt. 1,966. Pop. 447.

SPECIAL OPPORTUNITIES.—Flour and feed mills, brick plant (brick clay a few miles north), newspaper, shoemaker, jeweller. Write Sec.-Treas. Town of Whitewood.

†**WILKIE**, on C.P.R., divisional point Winnipeg to Edmonton line, and 3 branch lines nearly completed. 100 miles w. of Saskatoon, 267 miles s.e. of Edmonton. Dom. Ex. Tel. C.P.R. Hotels, Empire, Wilkie \$2.50. 3 churches, park, 2 public schools, C.P.R. repair shops, 3 elevators (90,000 bushels), 3 lumber yards, 2 newspapers, 3 livery stables, agric. soc. and exhib. grounds, volunteer fire brigade, town band, tennis club, machine shop, 2 banks, municipal waterworks and electric light, hospital, sub-Dominion Lands office, Govt. Immigration Hall. Farming district. Barracks of R.N.W.M.P. Pop. (Town Census, July, 1912), 1,200.

SPECIAL OPPORTUNITIES.—Flour mill, biscuit factory, sash and door factory, creamery, brick and cement plants, steam laundry, restaurant, building houses, wholesalers. See under "Agric. and Fruit Districts" and illus. Advt. Write for free illus. booklet to Sec. Bd. Trade.

WOLSELEY, on C.P.R. Moose Jaw Section, 62 miles e. of Regina. A divisional point of Wolseley-Reston branch. Dom. Ex. Tel. C.P.R. Hotels, Empire, Leland \$1.50. 6 churches, convent, public school, electric light and power company, 7 elevators (186,000 bushels), brick yard, 3 banks, 2 laundries, telephone. The C.P.R. have a nursery here of 750,000 trees. Alt. 1,950. Pop. 961.

SPECIAL OPPORTUNITIES.—Flour mill, dairy, cheese factory. Power can be developed from Wolseley Reservoir. Write Sec. Bd. Trade.

YELLOW GRASS, on C.P.R., 74 miles s.e. of Moose Jaw. Dom. Ex. Tel. C.P.R. Hotel, Maple Leaf. 3 churches, waterworks, public school, opera house, 5 elevators (120,000 bushels), 2 banks. Centre of fine grain belt. Pop. *600.

†**YORKTON**, on C.P.R. and G.T.P. (Hudson Bay br.), 130 miles n.e. of Regina. Dom. Ex., Can. Ex. Tel. C.P.R., G.N.W. Hotels, Yorkton \$2.50, Balmoral \$2 to \$3 5 churches, 3 public schools, \$75 000 high school. Dom. Lands office, court house, Land Titles office, hospital, R.N.W.M.P. barracks, 2 brick yards, flour mill, 8 elevators (240,000 bushels), planing mill, 5 lumber yards, 2 machine shops, aerated water works, garage, 2 newspapers, cement block works, steam laundry, dairy, marble works, International Harvester and other implement cos. Municipally owned electric light plant, waterworks, sewerage, fire hall. Judicial centre of N. E. Sask. Local and long distance telephones. Summer resort at York Lake, 4½ miles. Good shooting. Pop. *3,500.

NOTE.—C.N.R. branch now building.

SPECIAL OPPORTUNITIES.—Wholesale distributing houses, first-class hotel. Liberal inducements to new industries. Building dwellings for sale or rent from \$2,000 to \$5,000 each. See under "Agric. and Fruit Districts" and illus. Advt. Write for free booklet "A," (64 pp. illustrated), to Sec. Bd. Trade.

†**YOUNG**, on G.T.P. main line and Prince Albert br., and C.P.R. Regina-Saskatoon br., 43 miles s.e. of Saskatoon. 110 m. s. of Prince Albert, 117 m. n.w. of Regina. Dom. Ex., Can. Ex. Tel. C.P.R., G.T.P. Hotel, Manitou \$1.50 to \$2. 2 restaurants, R.C. church, (Pres services), public school, bank, city hall, fire hall, 2 elevators (60,000 bushels), 2 lumber yards, lime co. (1,000 bush. per day), 2 liveries, newspaper, 2 general and 6 other stores. Little Manitou Lake (3 miles) has genuine medicinal properties and is a popular summer resort. Pop. *200.

SPECIAL OPPORTUNITIES.—Flour mill, aerated water works, broom factory, linseed oil mills, agric. implement and repair works, brick yard (heavy clay deposits 2 m. distant), saddler, cobbler, milliner, furniture store, drug store and doctor, butcher, baker, lawyer. Free sites and liberal concessions to new industries. See under "Agric. and Fruit Districts" and illus. Advt. Write for free pamphlet to Sec. Bd. Trade.

ZEALANDIA, in Goose Lake District, 60 miles s.w. of Saskatoon, on C.N.R. 1 hotel, 1 newspaper, 4 grain elevators (160,000 bushels), 1 bank, 1 school, 4 churches (Ang., R.C., Meth., Pres.), usual stores, a sub-office for Dominion Lands. Excellent farming district. Pop. *500.

SPECIAL OPPORTUNITIES.—Dentist, photographer. Write Mgr. Royal Bk.

When writing to local references mention Heaton's Annual.

Agricultural Districts

This chapter contains descriptions of some of the leading districts to which immigration is attracted. Illustrations will be found scattered through the booklet.

SASKATCHEWAN. The province is divided naturally into:

NORTHERN SASKATCHEWAN. Heavily wooded beyond Tp. 63, and has scarcely been explored yet. The Hudson Bay traders and a few trappers and prospectors form almost the entire white population.

SOUTHERN SASKATCHEWAN. South of Tp. 63, and extending to the International Boundary line, are the great prairie lands which have made Saskatchewan so well known as an agricultural province. This area contains 86,826,240 acres. In 1912 there were only 9,184,814 acres under the four leading crops, although a careful estimate shows that at least 57,884,160 acres of arable lands lie within the boundaries of this district. The country is centrally divided by the Saskatchewan River (navigable), and includes undulating prairies, with lakes and ponds, rolling prairie with bluffs of poplar and high rolling country, partly heavily timbered with spruce and pine. Soil and climate are peculiarly adapted to cultivation of wheat.

BATTLEFORD DISTRICT. Comprises an enormous area of rolling land. Soil sandy loam, with clay subsoil 3 to 5 ft. deep, watered by Battle and Saskatchewan Rivers, lakes and springs. Wells average from 25 to 30 ft. in depth. Mixed farming and dairying is on the increase. Leading crops and products: Wheat, oats, barley, flax, potatoes, hay, cattle and hogs. Markets at Battleford, North Battleford, Delmas, Bresaylor and Paynton. C.N.R. and G.T.P. afford transportation. Average crops per acre in 1911: Wheat, 28 bush.; oats, 56 bush.; barley, 32 bush.; flax, 14 bush.; roots, 125 bush. Average price of raw lands per acre, \$15 to \$18; improved farms, \$20 to \$26. About 75,000 acres are available for settlement. Wood is obtainable in district. Coal is shipped from Edmonton and Pennsylvania. Undeveloped water power in Battle River. Beautiful scenery along both rivers. Immigration in 1911 about 950. Pop. of district includes Canadians, English and French. Write for free literature to Commissioner, Bd. of Trade, Battleford, Sask.

- CANORA DISTRICT.** Area about 50 miles e. and w. by 90 miles n. and s. Northern part is rolling, with some timber. To e. and w. of Canora are level fertile plains. Soil black loam, 2 ft. deep, with clay subsoil. Abundant water at 15 to 40 ft. Good local market at Canora. Well served by C.N.R. and G.T.P. A grain-growing, mixed farming and dairying country. Vegetables do well. Wheat averages 28 to 30 bush.; oats, 70; barley, 40; flax, up to 20. Pop. about 12,000, including Canadians, British, Americans, Germans, Austrians and Russians. Immigration in 1911 estimated at 1,000; 30 to 40 townships available for homesteads about 40 to 70 miles n. on projected railway lines. Price per acre of raw lands, \$15 to \$20; improved farms, \$25 to \$30. Wood costs about \$5 a cord; soft coal, \$8; hard, \$12. Write Sec.-Treas. Bd. of Trade, Canora.
- CARROT RIVER VALLEY.** Area about 90 by 30 miles. Served by the C.N. Ry. Land mostly level; in parts rolling or hilly, well watered. Wood plentiful. Admirably adapted for mixed farming or grain growing. Soil is rich black loam several feet deep. All kinds of crops are successfully grown. To the east is a large wooded district containing valuable timber. North of Melfort, on the direct line of the railway being constructed to the Hudson Bay, a number of homesteads are available. The North Saskatchewan Land Co., Ltd., Winnipeg, own nearly 70,000 acres in this valley.
- CRAIK DISTRICT.** A grain-growing district which has had no crop failure to date, and prairie land slightly rolling; soil, clay loam with clay subsoil, watered by Little Arm River. Served by C.N.R. Leading crops, wheat, flax and oats, with some barley. Pop. chiefly American, some English and Canadians. Price per acre of raw lands, \$16 to \$22; improved farms, \$20 to \$35. See under Descriptions of Towns. Write Sec. Bd. of Trade, Craik Sask.
- DELMAS DISTRICT.** Land is rolling, with sandy loam 3 ft. deep, clay subsoil, watered by lakes and rivers. Wells average 26 ft. deep. Mixed farming is carried on. Leading crops: Wheat, oats and barley. Good market at Battleford. Railway affords good transportation. In local districts wood is obtainable for fuel. Good water power. Fine scenery. Country well wooded with poplar bluffs. Average price of raw lands per acre, \$15 to \$20; improved farms, \$20 up. Pop. 400, mostly French and English.

ELFROS DISTRICT. Contains about 250 sq. miles of rolling land. Soil, black loam 8 to 16 in. deep, with clay subsoil, well watered by streams and springs. Wells average 20 to 60 ft. deep. Grain growing and stock raising is carried on. Leading crops and products are: Wheat, oats, flax, dairy produce, potatoes and live stock. Elfros, Saskatoon and Winnipeg, Man., provide excellent markets. District won cup for milling wheat, and cup and medal for oats at Saskatchewan Provincial Seed Fair held at Regina. Average price of raw land per acre, \$18 and upwards; improved farms, from \$25 up. Main line of the C.P.R. and Winnipeg to Edmonton branch runs through the district. Land being partly wooded, fuel is easily obtained. Population about 2,000, mostly Canadians and Americans. See under Descriptions of Towns. Write to Sec. Bd. of Trade, Elfros, Sask.

ESTEVAN DISTRICT. Area about 5,000 sq. miles. Land is slightly rolling, high and dry. Some sandy soil near rivers to s. of town. The rest is black and clay loam 2 ft. deep, on clay subsoil. Watered by the Souris River and Long Creek. Wells 30 to 150 ft. Served by three lines of C.P.R., C.N.R. under construction, and G.T.P. have charter. Good local markets provided by mines and brick yards. A grain-growing country, with some mixed farming. Wheat averages 20 bushels; oats, 50; barley, 40; flax, 15. Neighborhood supplies unlimited lignite coal and clay for brick and pottery. Banks of rivers well wooded. Pop. about 9,000, including Canadians, Americans, English, Scandinavians, French and Germans. Immigration in 1911 estimated at 1,800. No homesteads available. Average price per acre of raw lands, \$25; improved farms, from \$30. Write Sec. Bd. Trade, Estevan, Sask.

HUMBOLDT DISTRICT. Area about 18,000 sq. miles, 85% arable; only 15% under cultivation. Land is slightly rolling, with some small lakes and creeks. Soil, black loam, 8 to 24 in., with clay subsoil. Pure water plentiful at 20 to 80 ft. Mixed farming, grain growing, dairying and stock raising prevail. Grain shipments in 1911 over 1,000,000 bush.; estimated grain shipments from 1912 crop, over 2,000,000 bush. Local markets at Humboldt; C.N.R. main line provides shipping facilities for other markets. Pop. 15,000 to 20,000, including Canadians, Americans, Scotch, English Irish and American Germans. Humboldt butter won highest awards in open competition at Winnipeg Fair, 1912. 3,000 free homesteads



Farming Made Easy. Breaking by Machinery near Moose Jaw. See page 53, and announcement "Moose Jaw District—Nicol & Lindner," page 63.

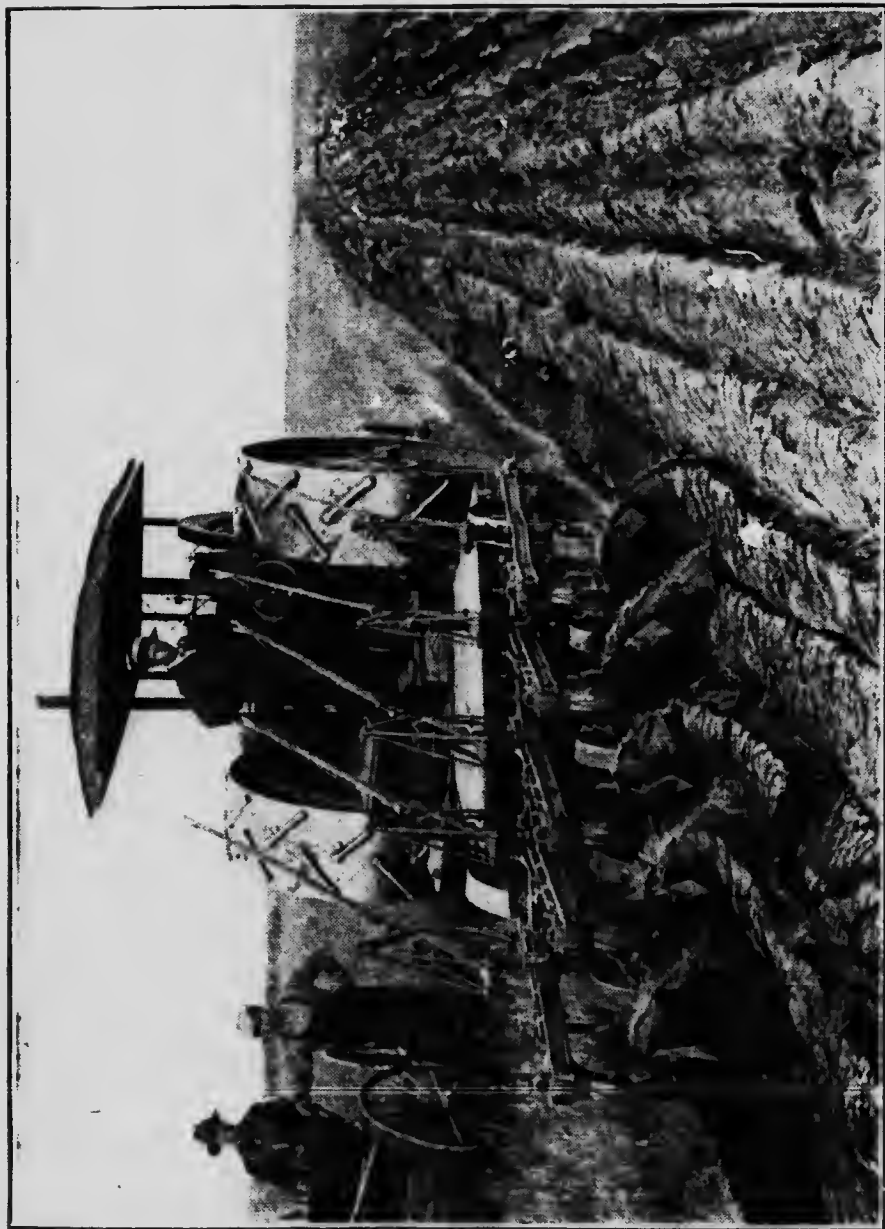
available. Price per acre of raw lands, \$12 to \$40; improved farms, \$15 to \$50. See under Descriptions of Towns. See below under "Announcements." Write Commissioner, Bd. of Trade, Humboldt, Sask.

INDIAN HEAD DISTRICT. Comprises about 23,100 acres. Land is slightly rolling. Soil, black loam with clay subsoil. Wells from 10 to 15 ft. deep. Leading products are wheat and oats. District was first settled by Ontario farmers. English and Scotch are represented. Traversed by C.P.R. Price of lands per acre: unimproved, \$15 to \$25; improved, \$40 to \$60. The Dominion Government Experimental Farm here covers one sq. mile. See under Descriptions of Towns. Write Sec. Bd. Trade Indian Head, Sask.

JACK FISH LAKE DISTRICT. On C.N.R. line from N. Battleford to Athabasca Landing, embracing Bright Lake, Turtle Lake, Turtle River Valley and Lac de la Biche, an open rolling country, well watered, adapted for mixed farming. The low altitude and long day tend to eliminate danger from frost; general average yield for oats is 70 bush. Many settlers have secured 30 bushels of wheat per acre. Write Land Department, C.N. Ry., Winnipeg Man.

KINDERSLEIGH DISTRICT. Land slightly rolling. Soil chocolate clay loam, 24 in. in depth, with clay subsoil. Wells 50 to 100 ft. deep for domestic and farm purposes. Principal occupation, grain growing. Stock raising is carried on in southern parts of district. Price of raw lands per acre, \$20; improved farms, \$30. Coal is procured at Lethbridge. Settlers chiefly British, American and some Germans. See under Descriptions of Towns. See below under "Announcements." Write Sec. Bd. Trade.

LANIGAN DISTRICT. Land is slightly rolling and open, dry prairie. Soil, black loam about 12 ins. deep, with clay subsoil, watered by ample rainfall. Wells 20 ft. Mixed farming is engaged in almost entirely. Traversed by the C.P.R. Pheasant Hills branch and Winnipeg-Edmonton line. Leading crops with average bushels per acre are: Wheat, 25 bush.; oats, 50 bush.; flax, 10 to 15 bush.; barley, flax (in small quantities) and vegetables are grown. Good markets for dairy produce and eggs at Saskatoon. Local markets for garden truck. Immigrants chiefly American, some British and Eastern Canadians, a few Germans. Average price per acre of raw lands, \$15; improved farms, \$20 up. Write to Sec. Bd. of Trade, Lanigan, Sask.



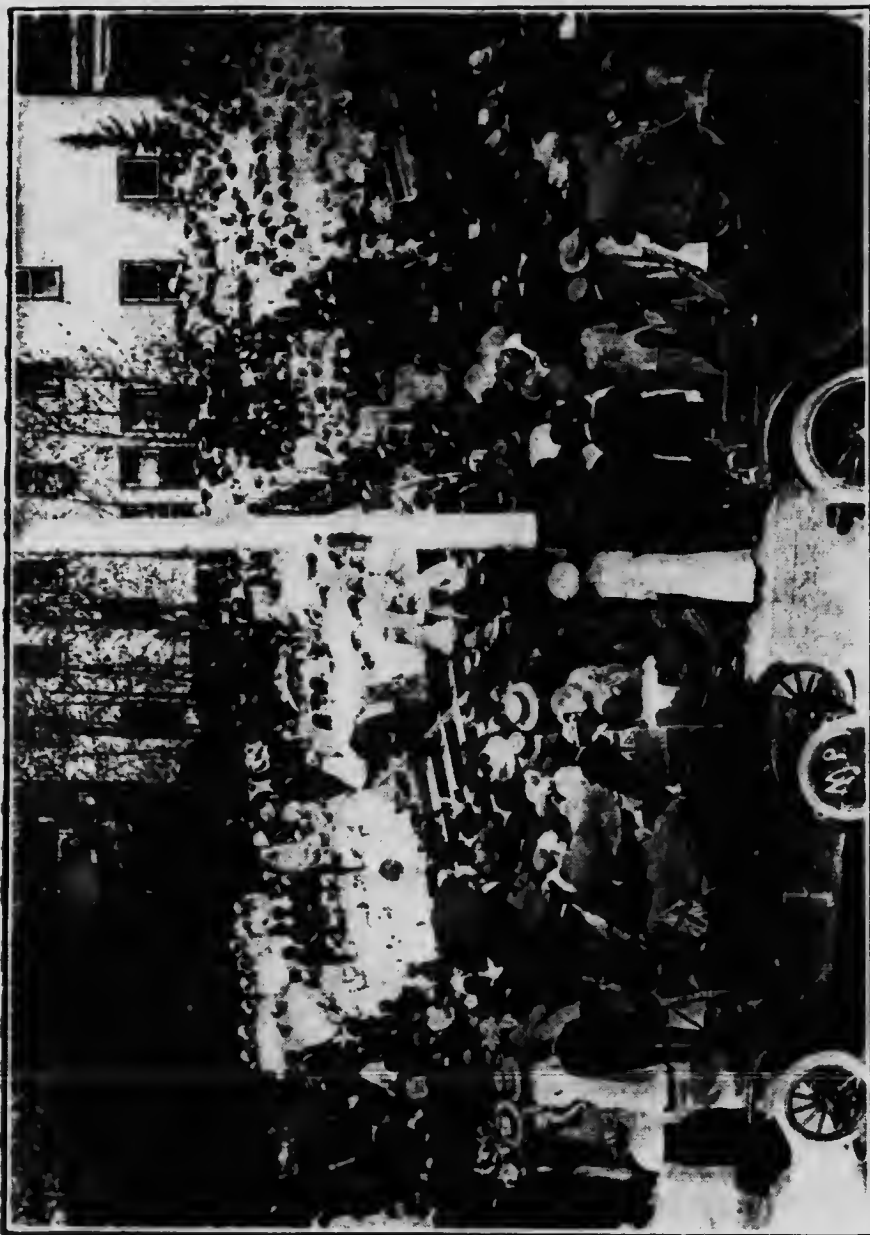
Breaking up the Prairie near North Battleford, see page 53. See announcement on page 63, headed 'North Battleford District—Stewart Bros. Farm Lands Company.'

LLOYDMINSTER DISTRICT. Country is rolling in parts, partially wooded and suitable for stock raising near the Saskatchewan and Battle Rivers. Nearer Lloydminster are large level tracts of clear land. Soil, rich black loam 6 to 18 inches in depth, with clay subsoil. Watered by 2 rivers and lakes. Served by C.N.R. and G.T.P. Extension of C.P.R. expected in 1912. Gov. creamery in Lloydminster, and large packing plant at Edmonton furnish markets for dairy and stock farmers. In 1910 to 1911 district took 34 prizes for grain exhibits at Edmonton, Regina and Brandon fairs, and silver trophy for oats at the National Corn Show at Columbus, Ohio. About 225,000 acres available for homestead entry in 1911. See under Descriptions of Towns. Write Publicity Commissioner, Lloydminster, Sask.

MELVILLE DISTRICT. Area 40 miles square. Land is rolling, dotted with small poplar groves. Soil, black loam, with clay subsoil, well watered. Wells, 18 to 48 ft. deep; mixed farming and grain growing. Traversed 4 ways by G.T.P. Ry. Average crops in 1911: Wheat, 20 bush.; oats, 70 bush.; flax, 14 bush. Germans, English, Norwegians, Swedes and Americans represented. Wood for fuel obtained in Beaver Hills. Average price per acre, raw lands, \$12 to \$18; improved farms, \$25 to \$35. See under Descriptions of Towns. See below under "Announcements." Write Sec. Bd. of Trade, Melville, Sask.

MOOSE JAW DISTRICT. A splendid agricultural section noted for the uniformly good average yields and quality of its crops. Flour mills and stock yards are established at Moose Jaw. The bulk of the homesteading in Saskatchewan takes place at the Dominion Lands office at Moose Jaw. In this district an additional 160 acres can be purchased by each homesteader as a "purchase homestead," or as a "pre-emption." See under Descriptions of Towns. See below under "Announcements."

NORTH BATTLEFORD DISTRICT. Comprises 30,000 sq. miles of rolling land, lightly dotted with poplar bluffs. Soil, black loam 15 inches in depth, with chocolate clay subsoil. About one-half is well adapted to cultivation of wheat, the balance to mixed farming. The country is well watered by lakes and streams. Wells average 14 to 40 ft. in depth. Leading crops and products are: Wheat, oats, barley, flax, alfalfa and cattle. Good markets at Winnipeg and U.S. points. Average crops per acre in 1911: Wheat 20 bush.; oats, 35 bush.; barley, 23 bush.



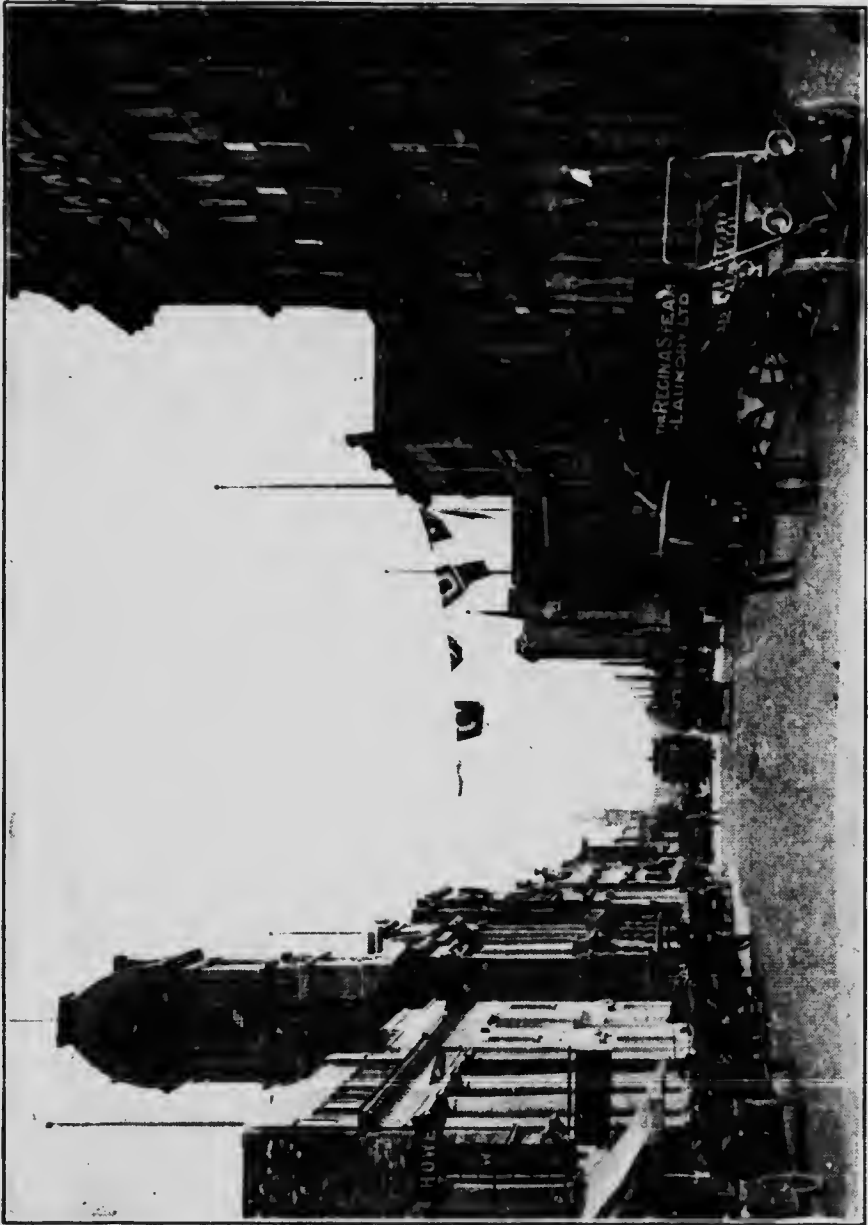
Empire Day at Prince Albert, Sask. School Children Singing. For information about this Northern Centre, see pages 35, 55, and announcement on page 64 headed "Prince Albert District—The Bradshaw Agencies, Limited."

flax, 12 bush. Canadian Northern Ry. main line and 2 branches afford transportation. Roughly speaking there are about 150,000 acres of good land available for settlement. Country is wooded, affording fuel for domestic purposes. Pop. of district 50,000, chiefly Canadian, American and Germans. See under Descriptions of Towns. For price of lands see below under "Announcements." Write Industrial Commissioner, North Battleford, Sask. 4

PARK BELT. North of the Yorkton branch of the C.P.R. and the main line of the C.N.R. lies a semi-wooded district known as the Park Belt, at present largely used for grazing. See under Yorkton District.

PRINCE ALBERT DISTRICT. Comprises an area of 5,000 sq. miles of rolling, parklike country, interspersed with occasional hay sloughs. Soil, black loam, with clay subsoil, well adapted for mixed farming. Ranching is carried on to some extent. Good wells, with average depth of 11 ft. Leading crops: Wheat, oats, potatoes, some flax and barley. Average crops per acre in 1911: Wheat, 25 bush.; oats, 45 bush.; barley, 25 bush.; flax, 10 bush. Exhibits of wheat won World's Championship at Columbus, Ohio, National Fair in 1910. Seed grain captured prizes also at Western Canadian Fairs. Good market in Prince Albert for all farm products. Three branches of the Can. Northern Ry. traverse the district; G.T.P. Ry. under construction. Average price of raw lands per acre, \$13.50; improved farms, \$20 up. Several thousand homesteads are obtainable, mainly in the bush country. The soil is excellent, but requires some cultivation. Wood for fuel can be easily obtained. Pop. about 50,000, including Canadian, English, French, Galician and American. See under Descriptions of Towns. See below under "Announcements." Write to Publicity Commissioner, Bd. of Trade, Prince Albert, Sask.

QU'APPELLE VALLEY. Extends 10 miles north and south of Qu'Appelle. The valley is about 300 ft. deep. The soil generally is sandy loam, watered by Qu'Appelle River. Wells 18 ft. deep in the valley; 30 ft. on the hills. A mixed farming district. The C.P.R. runs 18 miles south and 7 miles to north of valley and the G.T.P. Ry. through the valley. Average crops are: Wheat, 30 bush.; oats, 50 bush.; barley, 40 bush.; flax, 18 bush. Price per acre of raw lands, \$20; improved farms, \$30 to \$40. Practically no homestead lands. Write to Sec. Bd. of Trade, Qu'Appelle, Sask.



Scarth Street, looking South, Regina, Sask. See descriptions of Regina and District on pages 37 and 57, and announcement headed "Regina District—Anderson, Lunney & Co.," on page 64.

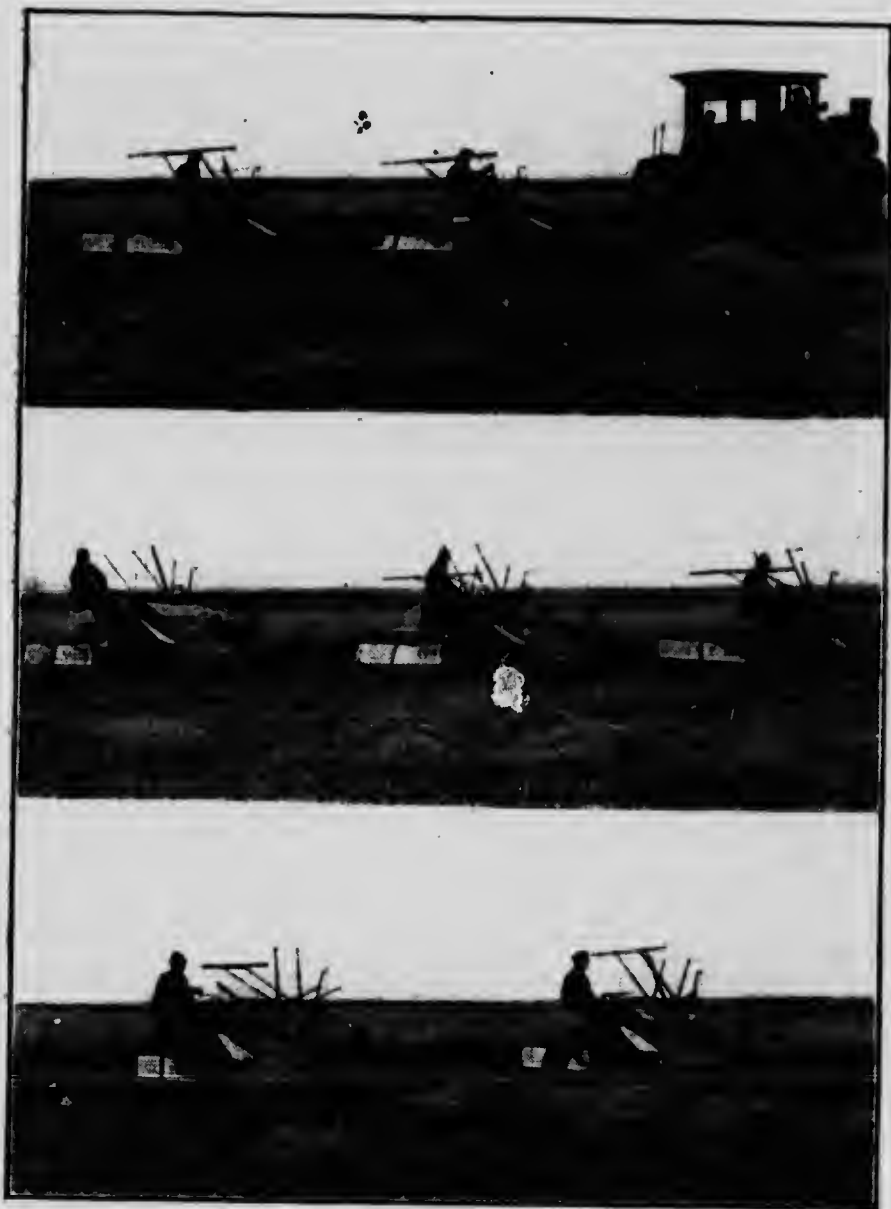
QUILL LAKE DISTRICT. An area 90 miles long by 75 miles wide, traversed by C.N.R. between Kuroki and Humboldt; a heavy rainfall, deep rich black soil with clay subsoil. A comparatively mild climate owing to low elevation. A very fine quality of wheat is grown. The wild grass and wild pea vine grows luxuriantly. Write Land Department, C.N.R., Winnipeg, Man.

RANCHING DISTRICTS. South-west Saskatchewan, west of Swift Current to the Alberta boundary, and south to the International Boundary, is peculiarly adapted for cattle and sheep raising. Owing to the Chinook winds from the Pacific Ocean the winters here are mild and the snowfall light. Cattle, horses and sheep graze the whole year. The "buffalo grass" in the Swift Current Creek region is very luxuriant, affording good pasture both in winter and summer. The town of Maple Creek is an important stock centre. See "Grazing Leases" under General Information. See under "Swift Current District."

REGINA DISTRICT. Within a radius of 25 miles from Regina land is undulating, with occasional gullies. Soil, black loam, 30 to 100 ft. Watered by Wascana Creek. Wells 30 to 60 ft. Grain growing, garden truck farming and dairying are carried on. Traversed by C.P.R., C.N.R., G.T.P., and Regina Municipal Electric Ry. Average crops per acre, approximately, were: Wheat, 20 bush.; oats, 34 bush.; barley, 38 bush.; flax, 12 bush.; roots, 150 bush. Pop. of district 40,000, including Canadians, English, Americans, Germans and Austrians. See under Descriptions of Towns. See below under "Announcements." Write Sec. Bd. of Trade, Regina, Sask.

ROSETOWN DISTRICT. Land is flat, slightly rolling in places. Soil, deep, heavy chocolate clay loam. Watered by Eagle Creek and springs. Wells, 20 to 125 feet. Served by C.N.R. and C.P.R. Average crops in 1911: Wheat, 32 bush.; oats, 80 bush.; flax, 20 bush. Average price per acre: Raw lands, \$30; improved farms, \$45. Pop. of district about 3,000, including British, Americans, and French. See under Descriptions of Towns. Write Sec. Bd. of Trade, Rosetown, Sask.

SASKATOON DISTRICT. Area tributary to Saskatoon is estimated at 45,000 sq. miles. Homesteading area is 15,120 sq. miles. Chief crops are wheat, oats and barley. Stockmen do well. Alfalfa succeeds. Acreage under cultivation is rapidly extending. A sale of Government



Cutting 200 acres per day of No. 1 Wheat in the Wilkie District. See page 59. See announcement headed "Saskatchewan Lands—B. E. Dutcher," page 64.

School Lands held at Saskatoon in 1910 realized \$17.70 per acre. See under Descriptions of Towns. Write Commissioner, Bd. of Trade, Saskatoon, Sask.

SCHOOL LANDS. See under Dominion School Lands, under General Information.

SWIFT CURRENT DISTRICT. Comprises 2,000 sq. miles of prairie land, slightly rolling, with all classes of loam 12 to 18 ft., and clay subsoil, watered by Swift Current Creek. Traversed by C.P.R. Good wells at 16 to 30 ft. Average crops 1911: Wheat, 21 bush.; oats, 50 bush. Wheat took 1st prize at Dominion Fair, Regina, 1911 and 1912. Pop. 15,000, including Canadians, Americans, English and Scotch. Price per acre of raw lands, \$20; improved farms, \$35. See under Descriptions of Towns. Write Sec. Bd. of Trade, Swift Current, Sask.

WEYBURN DISTRICT. An area 90 miles by 170 of rich, heavy soil, eminently adapted to the raising of hard wheat. Land in great demand, and average crop yield up to the highest standard for province. Country is rolling prairie, well watered and in some parts wooded. Served by several lines of the C.P.R., C.N.R. and G.T.P. Average yield in 1912: Wheat, 21 bush.; oats, 42; flax, 15; barley, 30. Large crops of roots and alfalfa grown. Pop. of district 50,000, comprising American and German settlers, with British races in majority. Farm lands, \$30 per acre up; wild land, \$20. See under Descriptions of Towns. Write Industrial Commissioner, Weyburn, Sask

WILKIE DISTRICT. Comprises some 20 townships. Land is slightly rolling, with stretches of level prairie. No bush. Soil, dark chocolate loam, 12 to 18 inches deep, with clay subsoil. Wells, 15 to 60 ft deep. Market at Wilkie and good shipping facilities by C.P.R. main Edmonton-Winnipeg line and 3 branches. A grain and mixed farming country. Wheat yields from 18 to 30 bush. per acre; oats, 45 to 84 bush.; flax, 12 to 20 bush. Pop., not including towns, 2,827, including Canadians, British and Americans. Some homesteads available, and C.P.R. have lands for sale. Average price per acre of raw lands, \$20 to \$25; improved farms, \$30 to \$35. See under Descriptions of Towns. See below under "Announcements." Write Sec. Bd. Trade, Wilkie, Sask.

YORKTON DISTRICT. Land is rolling with some small timber. Soil, black loam, 12 inches to 2 ft., with clay subsoil. Plentiful rainfall. Wells, 30 to 45 ft. A mixed farming district. Traversed by C.P.R. (main line) to



Viewing South of Wilkie, Sask. Read description on page 59, and announcement headed "Wilkie District—R. James Speers," on page 64.

Edmonton, G.T.P. Regina to Hudson Bay, C.N.R. Winnipeg to Calgary, already within 35 miles of Yorkton. Average crops 1912 were: Wheat, 25 bush.; oats, 80 bush.; barley, 40 bush. Pop. of district over 10,000, including English, Scotch, Irish, American, German and Hungarian. See under Descriptions of Towns. See below under "Announcements." Write for free booklet "A" (64 pages, illustrated,) to Sec. Bd. of Trade, Yorkton, Sask.

YOUNG DISTRICT. Area has a radius of 9 miles. Land is gently rolling. Soil, black loam, 18 inches deep, on clay subsoil. Wells, 24 to 75 ft. deep. Ample rainfall. Served by G.T.P. (main line), and C.P.R. Local markets take all products. A grain and mixed farming district. Wheat averages 23 bush.; oats, 50; flax, 18. All garden vegetables do well. Pop. of district about 2,000. Canadians and American. Good homesteads available 15 miles from Young. Price per acre of raw lands, \$16 to \$25; improved farms, \$20 to \$35. See under Descriptions of Towns. Write for free pamphlet to Sec. Bd. Trade.

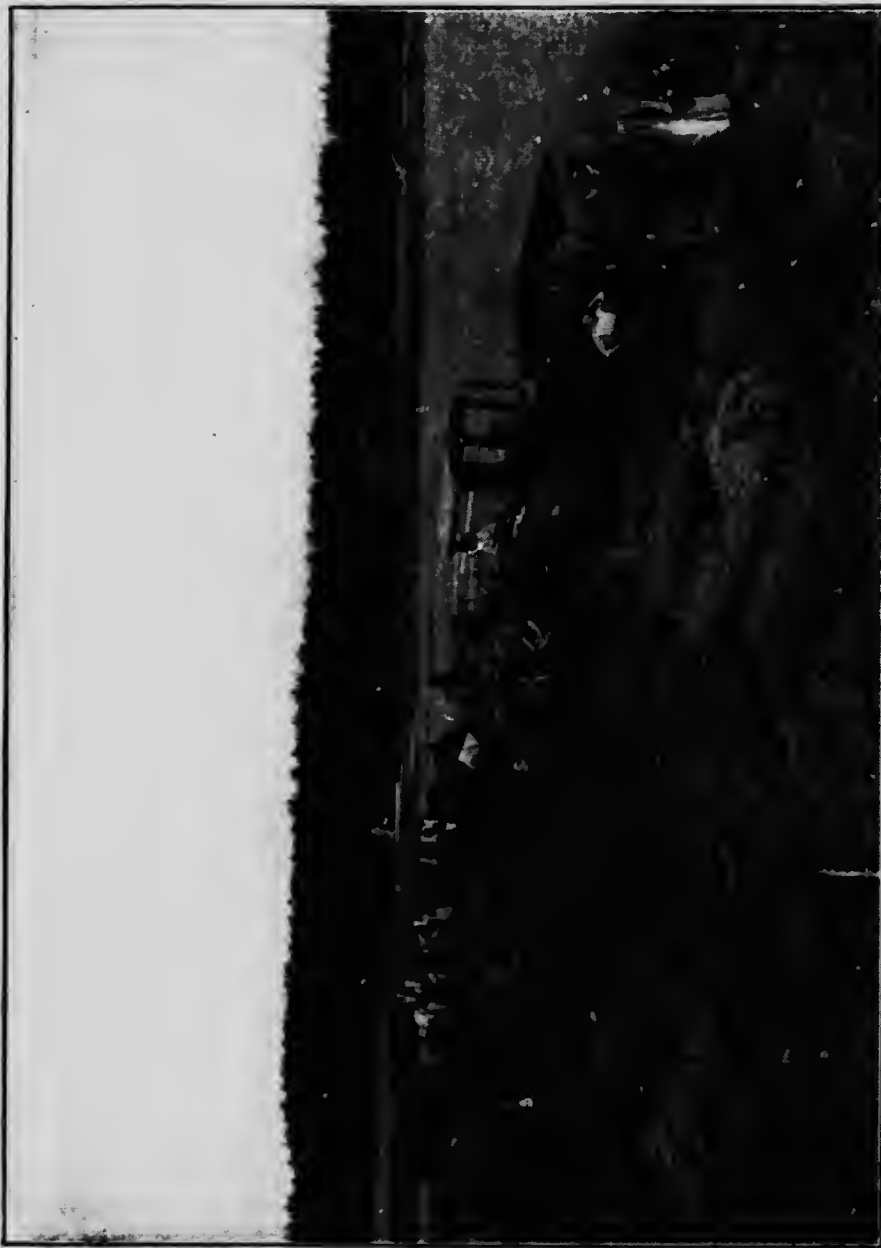
ANNOUNCEMENTS

Announcements concerning lands will be accepted only for responsible firms of recognized standing, personally known to the Editors. The Editors reserve the right to edit material received. For descriptions of districts referred to in the headings of these Announcements see above.

NOTE.—The Saskatchewan Government assumes no responsibility whatever in connection with these Announcements.

BATTLEFORD DISTRICT—L. H. GOOD. First-class improved and unimproved lands for sale throughout the Battle River District. Specially adapted to mixed farming and dairying. Ample fuel, water and pasture. Unimproved lands \$10 to \$20 per acre, according to location; improved, \$15 to \$30, according to location and improvements. Excellent markets; establishment of Laurentia Milk Co. at Battleford ensures steady market for milk; high prices. Average crops per acre, 1911: Wheat, 28 bush.; oats, 54; barley, 36. L. H. Good, Battleford, Sask.

CANADIAN PACIFIC RAILWAY LANDS—In 1898 the wheat crop of Saskatchewan was 4,780,440 bushels. Year by year this has increased, and the crop of 1911 stood at about one hundred million bushels. Thousands of the farmers who have contributed to this magnificent result raised their wheat on lands purchased from the Canadian Pacific Rail-



Harvest Scene near Yorkton, Sask. See paragraph "Yorkton District—Bradbrooke Bros." on page 64, and description of Yorkton District on page 59

way Company, which still has several million acres for sale on easy terms, and at prices ranging from \$15.00 to \$30.00 per acre. For full information, maps, literature and price, address J. S. Dennis, Assistant to the President, Dept. of Natural Resources, C.P.R., Calgary, Alta.

HUMBOLDT DISTRICT—THE JOHN ADAMS REALTY CO., LTD. We have for sale thousands of acres of the best farm lands in Saskatchewan. The soil is adapted for raising any kind of grain. For mixed farming this district cannot be beaten. The land is slightly rolling, partly open prairie, and partly covered with some brush, which offers no difficulty in clearing. There are excellent shipping facilities at Humboldt, which is a divisional point. Price of raw lands: \$10 to \$25 per acre; improved farms, proportionately low. We make loans for investors, and attend to insurance. The John Adams Realty Co., Ltd., Humboldt, Sask.

LLOYDMINSTER DISTRICT—M. S. BERKELEY & CO. First-class unimproved wheat lands for sale, both north and south of Lloydminster. Prices ranging from \$18 to \$30 per acre, depending on the quality and location. Terms to be arranged. All the lands we control have been inspected by us. We have also some excellent mixed farming lands. This is one of the coming districts of Western Canada and should not be overlooked. M. S. Berkeley & Co., Union Bk. Bldg., Winnipeg, Man.

KINDERBLEY DISTRICT—CANADIAN DOMINION DEVELOPMENT, LTD. We have 2,000 acres of wheat lands here for sale at fair prices and on easy terms. Canadian Dominion Development, Ltd., 284 Portage Ave., Winnipeg, Man.

MELVILLE DISTRICT—THE J. ROWAN CO. We have high-class properties of every description for sale in and around Melville. Our prices are right. Melville is the largest distributing centre in the district and is second in rural population in the province. A buy in Melville is an investment and not a speculation. The J. Rowan Co., Melville, Sask.

MOOSE JAW DISTRICT—NICOL & LINDNER. Write for information and prices regarding some of the choicest sections of wild and improved wheat lands in this district. We have for sale the best properties at the lowest prices. Reference: Merchants' Bank of Canada. Nicol & Lindner, Moose Jaw, Sask.

NORTH BATTLEFORD DISTRICT—STEWART BROS. FARM LANDS CO. We have lands for sale in the fertile valley of the N. Saskatchewan River. The best of soil, good water at 12 to 40 ft. Wood for fuel, fencing and shelter for stock.

Raw lands, \$15 to \$25 per acre; cultivated lands, \$20 to \$40; 25% of purchase money on sale, balance in 4 or 7 equal annual instalments: special terms when purchaser agrees to improve land in first year. Write us for literature. Stewart Bros Farm Lands Co., N. Battleford. Reference: Canadian Bank of Commerce, N. Battleford.

PRINCE ALBERT DISTRICT—THE BRADSHAW AGENCIES, LTD. *Whether you wish to farm in our mixed farming country round Prince Albert, which Old Country farmers choose before any other location on account of trees, which give shelter, plenty of good water and wonderful growth of feed; or whether you wish to invest in city property and farm lands; or whether you wish to invest in first mortgages, you should write us. We are Old Country people ourselves, and know that you would not hesitate to invest in Canada if you had some reliable firm to do business with. We can satisfy you on this account if you will write. The Bradshaw Agencies, Ltd., Prince Albert, Sask.*

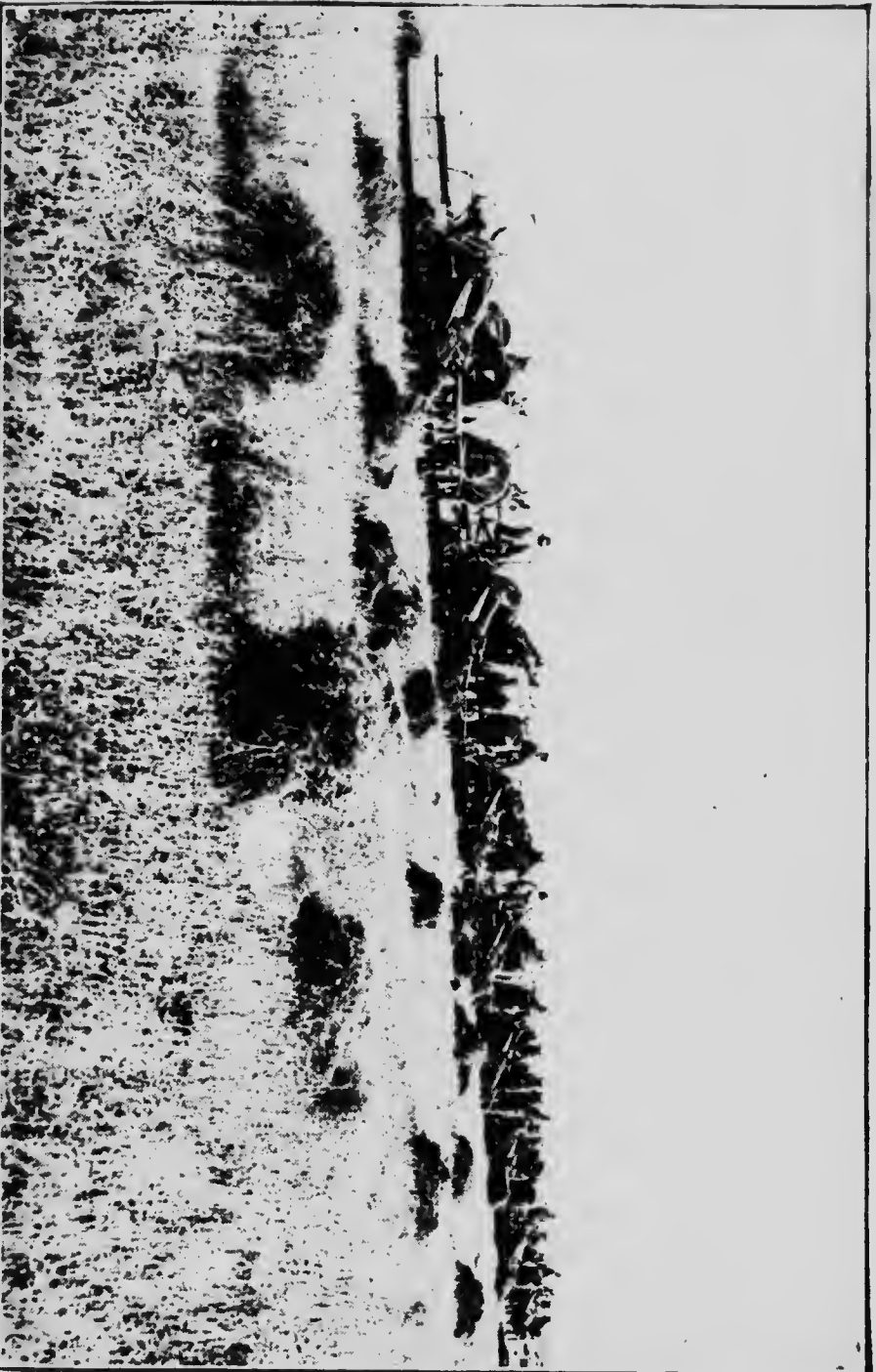
REGINA DISTRICT—ANDERSON, LUNNEY & Co. *We have been in business in Regina for the past ten years and have made a careful study of lands and investments both for the settler and the outsider. Our experience is at our clients' disposal, and we will gladly answer questions. Write us fully and we will immediately supply the most accurate and reliable information. Anderson, Lunney & Co., Regina, Sask.*

SASKATCHEWAN LANDS—B. E. DUTCHER. *Saskatchewan farm lands, in the choicest open-prairie districts of Central Saskatchewan—Saskatoon, Goose Lake, Tramping Lake, Rosthern, Dundurn, Wilkie, Cut-knife, Jackfish and Last Mountain Valley. Prices are still far below intrinsic values, but enormous annual yields of wheat, flax, oats, etc., and the economy of power farming, are rapidly enhancing values. Some first-class propositions near good towns on crop payments. B. E. Dutcher, Saskatoon, Sask.*

WILKIE DISTRICT—R. JAMES SPEERS. *This fertile district includes the famous Cut-knife, Narrow Lake, Swathmore, Starview and Tramping Lake Districts. I have rich farm lands here for sale, improved and unimproved, from farms of 160 acres to large tracts of land suitable for steam plowing. Write for particulars. R. James Speers, Wilkie, Sask.*

YORKTON DISTRICT—BRADBROOKE BROS. *We have for sale improved and wild lands in the Yorkton District at \$15 to \$40 per acre, on easy terms, to suit purchasers. This district has never had a crop failure. Wheat, 15 to 30 bush. per acre; oats, 50 to 100. Write for particulars and booklet "A" (64 pages, well illustrated, mailed free) to Bradbrooke Bros., Yorkton, Sask.*

When writing to local references, mention Heaton's Annual.



Eight Binders (32 horses) Cutting Flax near Regina. Read paragraph headed
"Regina District—Anderson, Lunney & Co.," page 64. See also page 56.

ADDRESS

This book can
be mailed as
printed matter
—use ½d. (1c.)
stamp.

To keep closed
for mailing, use
rubber band or
clip.

