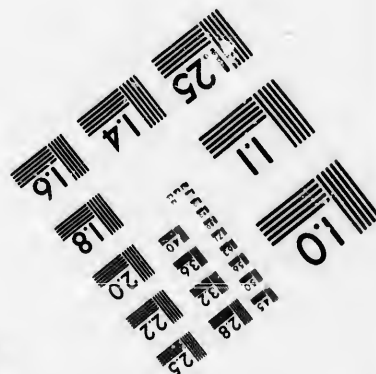
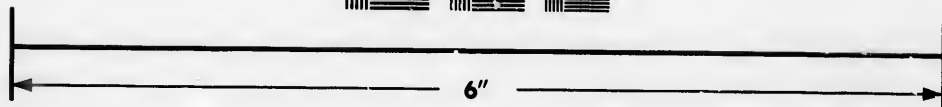
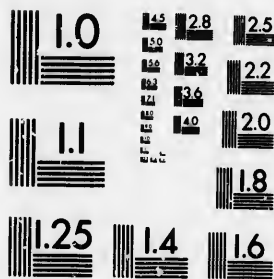


**IMAGE EVALUATION
TEST TARGET (MT-3)**



**Photographic
Sciences
Corporation**

23 WEST MAIN STREET
WEBSTER, N.Y. 14530
(716) 872-4503

**CIHM/ICMH
Microfiche
Series.**

**CIHM/ICMH
Collection de
microfiches.**



Canadian Institute for Historical Microreproductions / Institut canadien de microreproductions historiques

© 1986

Technical and Bibliographic Notes/Notes techniques et bibliographiques

The Institute has attempted to obtain the best original copy available for filming. Features of this copy which may be bibliographically unique, which may alter any of the images in the reproduction, or which may significantly change the usual method of filming, are checked below.

L'Institut a microfilmé le meilleur exemplaire qu'il lui a été possible de se procurer. Les détails de cet exemplaire qui sont peut-être uniques du point de vue bibliographique, qui peuvent modifier une image reproduite, ou qui peuvent exiger une modification dans la méthode normale de filmage sont indiqués ci-dessous.

- | | |
|--|--|
| <input type="checkbox"/> Coloured covers/
Couverture de couleur | <input type="checkbox"/> Coloured pages/
Pages de couleur |
| <input type="checkbox"/> Covers damaged/
Couverture endommagée | <input type="checkbox"/> Pages damaged/
Pages endommagées |
| <input type="checkbox"/> Covers restored and/or laminated/
Couverture restaurée et/ou pelliculée | <input type="checkbox"/> Pages restored and/or laminated/
Pages restaurées et/ou pelliculées |
| <input type="checkbox"/> Cover title missing/
Le titre de couverture manque | <input checked="" type="checkbox"/> Pages discoloured, stained or foxed/
Pages décolorées, tachetées ou piquées |
| <input type="checkbox"/> Coloured maps/
Cartes géographiques en couleur | <input type="checkbox"/> Pages detached/
Pages détachées |
| <input type="checkbox"/> Coloured ink (i.e. other than blue or black)/
Encre de couleur (i.e. autre que bleue ou noire) | <input checked="" type="checkbox"/> Showthrough/
Transparence |
| <input type="checkbox"/> Coloured plates and/or illustrations/
Planches et/ou illustrations en couleur | <input type="checkbox"/> Quality of print varies/
Qualité inégale de l'impression |
| <input type="checkbox"/> Bound with other material/
Relié avec d'autres documents | <input type="checkbox"/> Includes supplementary material/
Comprend du matériel supplémentaire |
| <input type="checkbox"/> Tight binding may cause shadows or distortion
along interior margin/
La reliure serrée peut causer de l'ombre ou de la
distorsion le long de la marge intérieure | <input type="checkbox"/> Only edition available/
Seule édition disponible |
| <input type="checkbox"/> Blank leaves added during restoration may
appear within the text. Whenever possible, these
have been omitted from filming/
Il se peut que certaines pages blanches ajoutées
lors d'une restauration apparaissent dans le texte,
mais, lorsque cela était possible, ces pages n'ont
pas été filmées. | <input type="checkbox"/> Pages wholly or partially obscured by errata
slips, tissues, etc., have been refilmed to
ensure the best possible image/
Les pages totalement ou partiellement
obscurcies par un feuillet d'errata, une pelure,
etc., ont été filmées à nouveau de façon à
obtenir la meilleure image possible. |
| <input checked="" type="checkbox"/> Additional comments:/ [Printed ephemera] [3] p.
Commentaires supplémentaires: | |

This item is filmed at the reduction ratio checked below/
Ce document est filmé au taux de réduction indiqué ci-dessous.

10X	14X	18X	22X	26X	30X
<input type="checkbox"/>	<input type="checkbox"/>	<input type="checkbox"/>	<input checked="" type="checkbox"/>	<input type="checkbox"/>	<input type="checkbox"/>
12X	16X	20X	24X	28X	32X

The copy filmed here has been reproduced thanks to the generosity of:

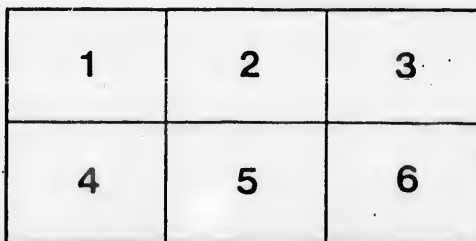
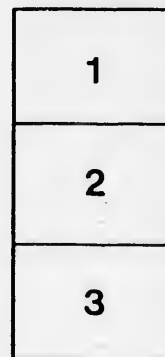
Seminary of Quebec
Library

The images appearing here are the best quality possible considering the condition and legibility of the original copy and in keeping with the filming contract specifications.

Original copies in printed paper covers are filmed beginning with the front cover and ending on the last page with a printed or illustrated impression, or the back cover when appropriate. All other original copies are filmed beginning on the first page with a printed or illustrated impression, and ending on the last page with a printed or illustrated impression.

The last recorded frame on each microfiche shall contain the symbol \rightarrow (meaning "CONTINUED"), or the symbol ∇ (meaning "END"), whichever applies.

Maps, plates, charts, etc., may be filmed at different reduction ratios. Those too large to be entirely included in one exposure are filmed beginning in the upper left hand corner, left to right and top to bottom, as many frames as required. The following diagrams illustrate the method:



L'exemplaire filmé fut reproduit grâce à la générosité de:

Séminaire de Québec
Bibliothèque

Les images suivantes ont été reproduites avec le plus grand soin, compte tenu de la condition et de la netteté de l'exemplaire filmé, et en conformité avec les conditions du contrat de filmage.

Les exemplaires originaux dont la couverture en papier est imprimée sont filmés en commençant par le premier plat et en terminant soit par la dernière page qui comporte une empreinte d'impression ou d'illustration, soit par le second plat, selon le cas. Tous les autres exemplaires originaux sont filmés en commençant par la première page qui comporte une empreinte d'impression ou d'illustration et en terminant par la dernière page qui comporte une telle empreinte.

Un des symboles suivants apparaîtra sur la dernière image de chaque microfiche, selon le cas: le symbole \rightarrow signifie "À SUIVRE", le symbole ∇ signifie "FIN".

Les cartes, planches, tableaux, etc., peuvent être filmés à des taux de réduction différents. Lorsque le document est trop grand pour être reproduit en un seul cliché, il est filmé à partir de l'angle supérieur gauche, de gauche à droite, et de haut en bas, en prenant le nombre d'images nécessaire. Les diagrammes suivants illustrent la méthode.

1883

JOHN JOSEPH LYNCH, by the grace of God, and appointment of the Holy See, Archbishop of Toronto.

To the Reverend Clergy, Religious Communities and Beloved People of the Laity, Health and Benediction in Our Lord.

Under the strongest impression of duty and charity, and following the desires of His Holiness the Pope, we ordered last year a voluntary collection to be taken up in all the Churches of the Archdiocese, on the Second Sunday of Lent, in aid of the Foreign Missions, especially in pagan countries, and we wish this year to renew the same request. The Society of the Propagation of the Faith, having its centre in France, which gave it birth, affords one of the strongest examples of the universality of our Church in the present age. This Society, raised up by providence to spread the Gospel in foreign lands, collected last year at one cent a week from each member, over 6,900,000 francs, about a million, three hundred and eighty thousand dollars, including an increase, on account of the Jubilee alms of \$177,200. This sum, though large, is not equal to the one-tenth of the money expended on foreign missions by the Protestant sects. Bibles and tracts are distributed by the millions by them. But the success of these efforts, according to the acknowledgment of their own newspapers, is minimum, whilst the outlay is maximum. The Holy Spirit is wanting to enterprises, undertaken for the conversion of the pagans and the spread of the true gospel outside of the true Church, founded by Christ. It will be interesting to know the localities where the funds for the propagation of the faith are collected and where they are dispersed. In Europe about \$1,351,000 were subscribed. France supplying about three-fourths of the sum collected throughout the whole world. This country is destined to see better days. Ireland, in her poverty, gave \$27,525, England and Scotland \$43,767, North America \$28,000, South America \$10,000. It is quite certain that, with more zeal, some countries could do more. We acknowledge that there is a difficulty in collecting one cent a week from each member of the society, and hence we have adopted the plan of taking up a collection once a year. Asia contributed \$2,400, Africa \$6,100, Oceania \$2,700.

DISBURSEMENTS.

Thirty-four Bishops and Vicars Apostolic with nine Religious Orders, and their branches, receive in Europe donations from the Society of the Propagation of the Faith. The missions in the greatest need are, Norway, Sweden, Lapland, Denmark, Bulgaria, Wallachia, Scotland, Greece, and Turkey in Europe. These missions received last year \$134,683.

In Asia donations were given to 71 Bishops and Vicars Apostolic and 17 Religious Orders.

In China and the neighbouring kingdoms there are 36 Bishops and Vicars Apostolic with seventeen Religious Orders, to whose care our Holy Father has confided that empire and the adjacent kingdoms. Donations have been supplied to these in proportion to their wants, as the Catholics there are all very poor and able to contribute but very little towards the support of the Church. Still the Bishops have their seminaries, orphan asylums and schools. There are many native priests amongst the clergy. In those countries there are 24 Vicar-Apostolic Bishops, with priests, religious communities, colleges and orphanages in the British possessions of Asia. In Africa there are 17 Bishops, Vicars-Apostolic, priests, and 19 branches of Religious Orders. Vast

fields of missionary labour are opened here within the last few years. It is the most difficult and insalubrious of all the foreign missions, and needs at the present moment all our sympathies and aid. Many conversions are effected amongst the blacks. In Australia and Oceania new dioceses have been formed and a great future awaits the Church in those countries owing principally to Irish emigration, and their children being educated in the true faith. In our own North-West and eastern territory a great work has been accomplished during the last fifty years. There are now in these countries one Archbishop and five Bishops, Vicars-Apostolic, including British Columbia and Vancouver Island. The Archbishop of St. Boniface, opposite Winnipeg, is assisted by thirty-four priests and thirty Sisters of Charity, college schools, orphan asylums, schools, etc., etc., and a number of lay brothers.

The Bishop of St. Albert, in the Saskatchewan District, is assisted by thirty priests and by as many Sisters of Charity with their orphan asylums, schools, etc. There are about twelve thousand Catholic Indians scattered over that vast region. The thirty priests have residences in the most convenient localities. In the districts of Arthabaska and Mackenzie there are two Bishops, seventeen priests, and a number of lay brothers and Sisters of Charity. British Columbia has one Bishop, eighteen priests, seventy-eight churches and chapels, three convents, with orphan asylums, schools and hospitals. Its Catholic population being 20,000, principally Indians; while Vancouver Island has a Catholic population of five thousand four hundred, one Bishop, twelve priests, a number of Sisters of Charity, with schools, orphan asylums, and convents. There is no part of the world at present that is not mapped out by the direction of the Pope and provided with spiritual assistance and guides. The command of our Lord to His Apostles, "Go teach all nations," has been faithfully carried out by degrees, by the Catholic Church. The evangelization of the world requires great courage and perseverance, the Holy Spirit of God breathes into souls the spirit of self sacrifice to quit home and all human ties and comforts, to labour and suffer for the salvation of souls. The missionaries in most of those countries that we have enumerated have to endure, like St. Paul, the fatigue of long journeys by sea and by land; dangers in the rivers, dangers from robbers, from the pagans, dangers of the city and in solitude, dangers from false brethren; pains from sickness and in watchings, from hunger and thirst, from cold and nakedness, and above all the anguish from the solicitude for the salvation of the people confided to their care, lest any should be lost through their fault. What great reward must these missionaries, co-operators with Christ in the salvation of souls, receive from Him? We, by our alms, can participate in their reward, which must be exceedingly great, for the salvation of one soul is more important than the preservation of ten thousand material worlds. If the Society of the Propagation of the Faith ceased to exist, or becomes relaxed in its efforts to supply means to the missions, then millions of souls should be abandoned, and would relapse again into infidelity. But this, we hope, will never take place.

God will stir up the zeal of generous souls to continue the good work, and their reward will be very great both in this world and in the next. We trust that all our good people will contribute according to their means. We must not forget that all Upper Canada received large contributions from the Propagation Society, when the first missionaries were labouring under great difficulties, but now that the missions are well established, honour as well as gratitude demand a return. Donations were sent to us, until we announced to the Society that we scrupled to receive money from them whilst so many other parts of the world were in greater distress. Parents will also teach

their children to be mindful of the thousands of poor children in China, who are exposed by their parents to the death of body and soul. In this unhappy country, parents when they have as many children as they wish to rear up, will expose the rest to be drowned in the rivers or devoured by beasts. Thousands of these innocent babes are collected every year, and their lives preserved by pious women who go through the villages in quest of those infants. These pious women require money for this work. We shall appropriate a fair share of the funds which are gathered, to the Association of the Holy Childhood instituted for the baptism and succour of those children. The journeys of the missionaries are very expensive in these foreign countries, and their people are too poor to contribute more than a trifle to their support. Besides, churches, orphanages and schools must be built, and teachers supported. This Evangelical work cannot be carried on except by the charity of the old Christian world. If we cannot join these holy men and women in labouring to extend the Kingdom of Christ by our toils and sufferings, we can at least facilitate their work, and participate in their reward. One of the great obstacles to the spread of the true faith is the multiplicity of the Protestant sects, preaching different religions to a people who were taught to believe that the religion of Christ is one, "One Lord, one faith, one baptism." We have appointed the Second Sunday of Lent for this collection, to give the people an opportunity of adding to their fastings, mortification and prayer, almsdeeds which deliver from sin. This pastoral shall be read in all the churches, religious communities and chapels of our archdiocese on the first Sunday of Lent, or on the following Sunday in chapels where there had been no mass on the first Sunday. The religious communities and children confided to their care are exhorted to contribute to this great work. Given at St. Michael's Palace on Ash Wednesday, 1883.

J. J. McCANN, Priest,
Secretary.

† JOHN JOSEPH,
Archbishop of Toronto.

Collections are to be sent to St. Michael's Palace as soon as possible.

NOTE.—Synopsis of the progress of religion in China.

Pagan Population.....	164,663,200
Catholic	771,710
Japan, Pagan.....	33,940,000
" Catholic.....	25,633
Conversion of Adults in China.....	17,847
Baptism of Children.....	286,782
Conversion in Japan.....	1,227
Baptism of Infants.....	1,464

