

1971/8-2/24

45

Port McNicoll



A City
in the
Making

AN ILLUSTRATED TALK ON THE
MAKING OF A CITY



BY

J. C. HAYES

PRESIDENT J. C. HAYES COMPANY, LIMITED

Head Office: 152-154 Bay St., Toronto, Ont.

Phones, Main 7140-7141

C. 1909-10.

PORT
McNICOLI.

THE NEW C. P. R. EASTERN TERMINAL ON
GEORGIAN BAY, AT TORONTO'S BACK DOOR

QUIETLY, and without the knowledge of Toronto people, the Canadian Pacific Railway have been building on the shores of Georgian Bay, at Port McNicoll, what one of their own officials has said will be the LARGEST TERMINAL on their system. For months the work of creating a new shipping port has been going on. Seven Million Dollars have already been spent, ten millions will be spent. Grain elevators are now being erected, freight sheds provided and a city is in the making.



A City in the making



C.P.R. Warehouse, 1,150 feet long. There is another completed 750 feet long.

FEW cities at their birth have so bright and prosperous a future as is assured to Port McNicoll. It is being built upon the solid foundation of financial and commercial necessity for a city at this particular place.

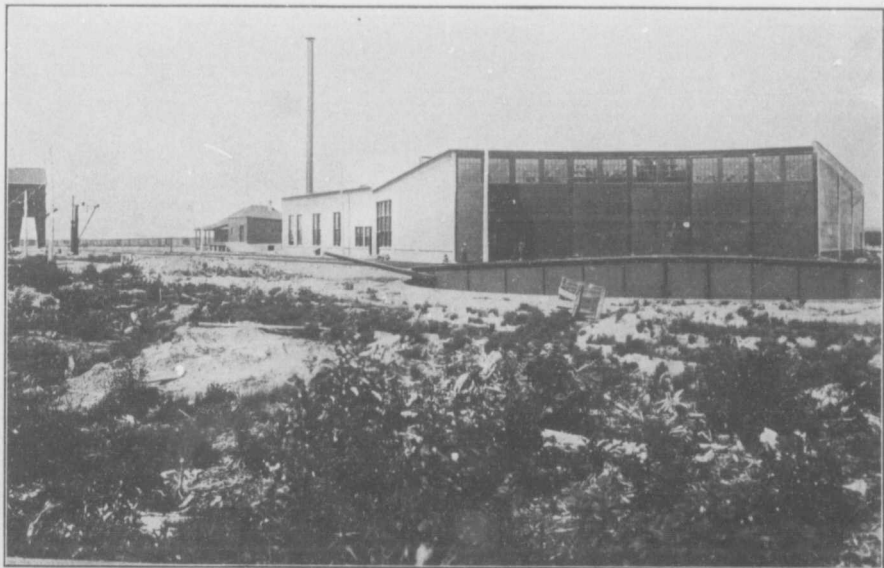
The surrounding country—the great transcontinental railway—the Georgian Bay—Victoria Harbor—all focusing at this point, compel the building of a city to supply the needs and to give an outlet to their product.

Logically and inevitably a city must and will come into being here, and an important city at that. The geographical position and layout of the country demands it. The growth of Port McNicoll will be phenomenal.

THE history of the fortunes that have been rolled up by the pioneers and founders of other cities will be repeated in Port McNicoll. Are you going to be one of these? The way, the place, the opportunity lie beneath your hand.

THE TIME IS NOW. A FEW DOLLARS PUT TO-DAY
INTO PORT McNICOLL CITY LOTS

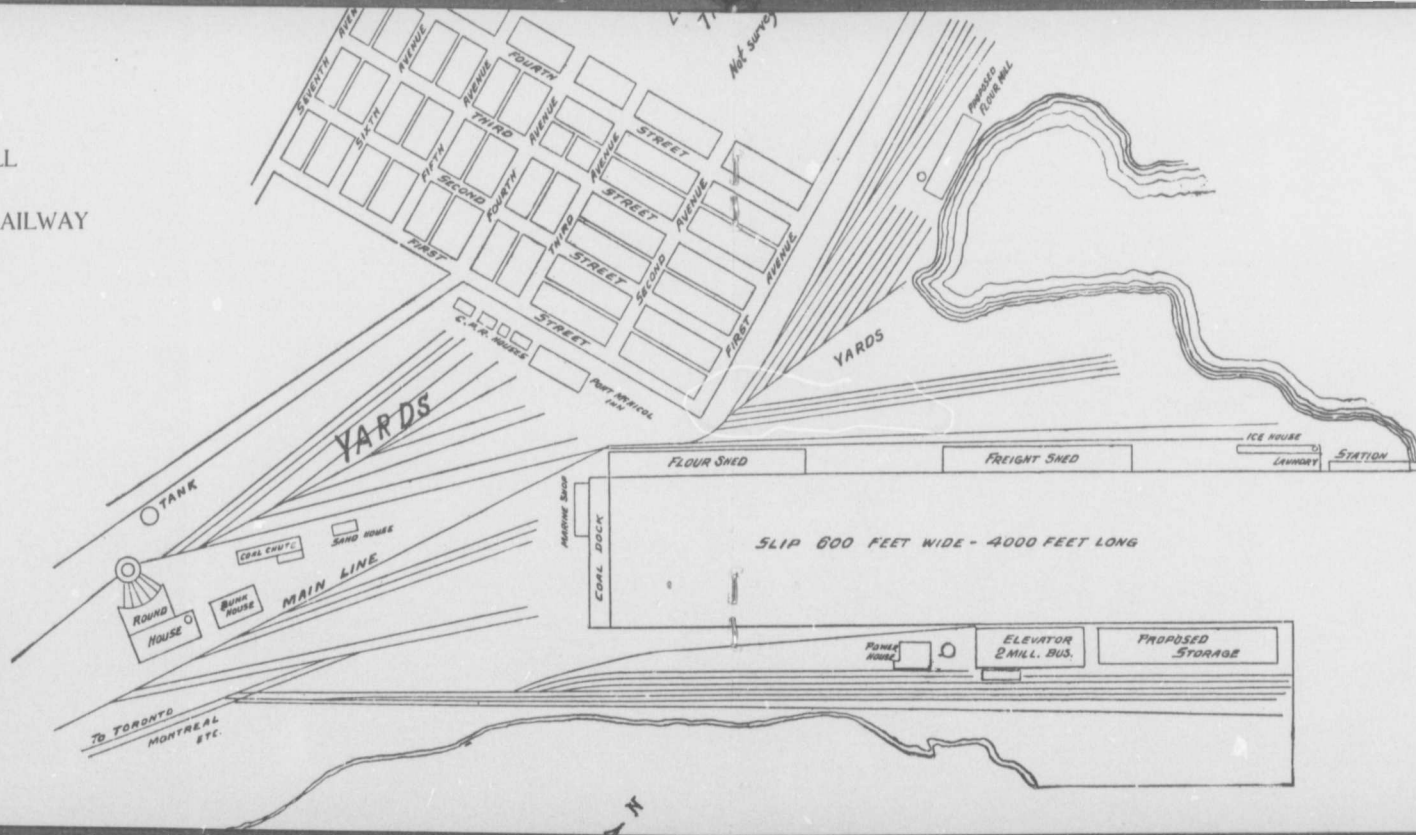
will bring you more than fourfold.



One Section of Round House Completed.—Port McNicoll.

PLAN OF
PORT McNICOLL
AND
CANADIAN PACIFIC RAILWAY
TERMINALS

We venture to say that
Port McNicoll in 1915
will have 15,000 people.
BUY your lot TO-DAY.



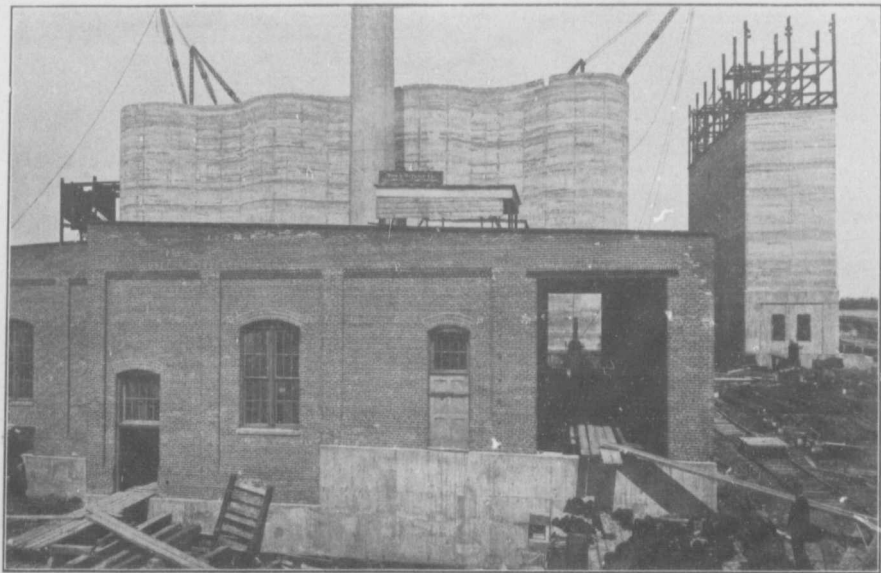
From Owen Sound to Peterboro is about 210 miles. From Port McNicoll to Peterboro about 90 miles or a saving of 120 miles on the haul from Georgian Bay to Montreal and the ocean liners.

Grades out of Owen Sound are heavy. From Port McNicoll to Peterboro a perfect line allows the carrying of 60 cars per train of grain. See this advantage?

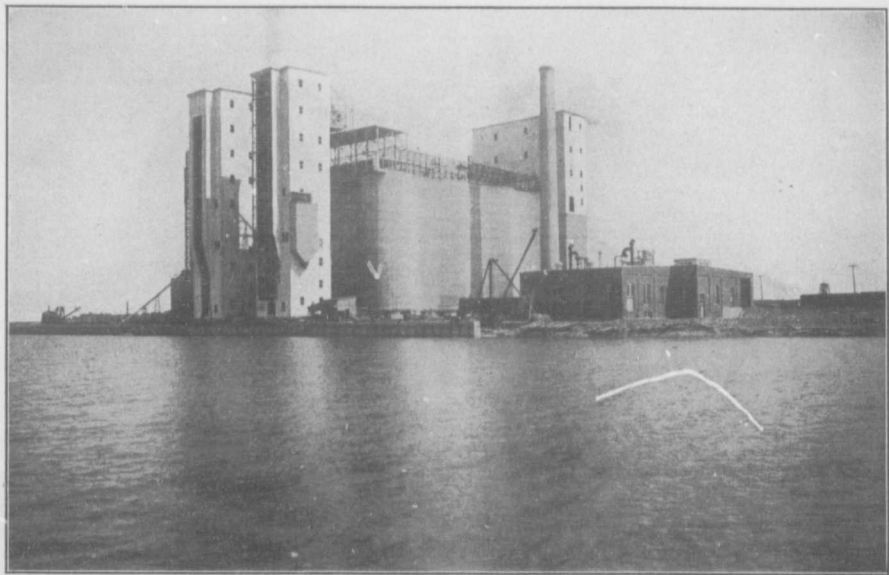
The Canadian Pacific Railway directors know all about Port McNicoll. Look out for huge flour mills, for the Lake of the Woods and Ogilvie Flour Companies at Port McNicoll.

Last year the C. P. R. handled over its systems seven and a half million barrels of flour. The export trade is growing. How many million barrels of flour will be handled at Port McNicoll?

Port McNicoll is blessed in every way. Bala Falls is only a few miles away and great power, under the auspices of the C. P. R., will be generated and transmitted to Port McNicoll.



Power House, Port McNicoll



C.P.R. Elevator, Port McNicoll. Capacity, 2,500,000. Four others to be built.

PORT McNICOLL HAS TO-DAY WHAT MANY A NEW TOWN TAKES 10 YEARS TO ACQUIRE,
NAMELY:

SEWERS AND WATER

COMMISSION MEN—

Port McNicoll will be the pocket book for the immense grain products of the Prairie—cutting off Duluth and Buffalo—the point of trans-shipment from water to rail and rail to water. You should appreciate the advantages offered you by this strategic situation.

CONTRACTORS—

Port McNicoll will have hundreds of thousands of dollars' worth of profitable contracts to be let in all lines of Construction work—railroad and trolley building, City improvements and private enterprises of various kinds.

MERCHANTS—

Two thousand men are now employed in the immediate vicinity of Port McNicoll and Victoria Harbor. These men and their families provide a field for all kinds of merchandise.

HOTEL KEEPERS—

Port McNicoll cannot help but attract a large transient population, as well as a permanent one. It will be both a starting point and terminus for travelers by rail and water. This means money for good hotel business.

BUILDERS—

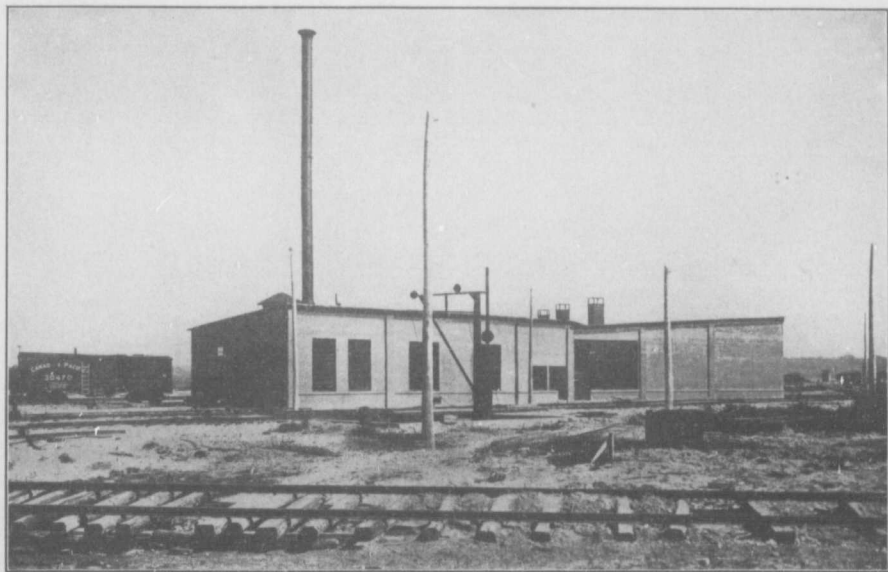
Here is a field for builders. Port McNicoll will require many substantial buildings, which will demand the services of carpenters, bricklayers, painters, plumbers and artisans. All who help in the erection of houses, etc.

THE FIELD—

Port McNicoll is a city in the making. Its growth will be phenomenal. The man who understands his business will find here a very virgin field in which to operate. The 1911 census for Owen Sound is 12,555 people.



Flour Warehouse, Port McNicoll



C.P.R. Laundry, Port McNicoll, used in connection with passenger boats

OUR GUARANTEE

We guarantee the title to our lots in Port McNicoll to be perfect.

We guarantee to furnish a good and valid deed to each purchaser of a lot or lots in Port McNicoll.

We guarantee to pay all expenses, both for time and money expended if any person who, upon investigation, finds that we have stated anything in printed literature or written letter materially at variance with the facts in regard to Port McNicoll.

We guarantee to return all money paid to us if conditions are not as represented in our printed matter and written letters.

