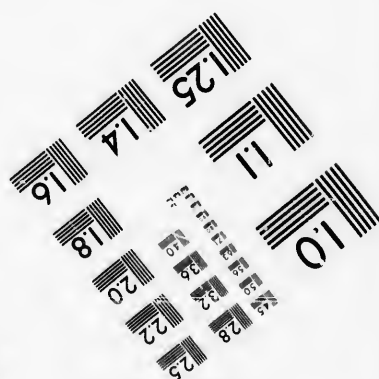
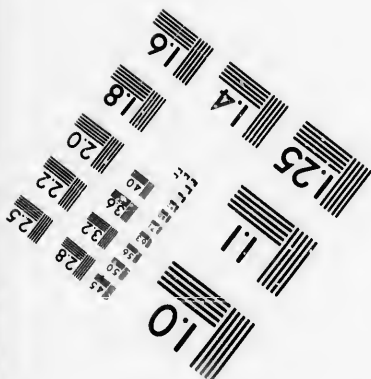
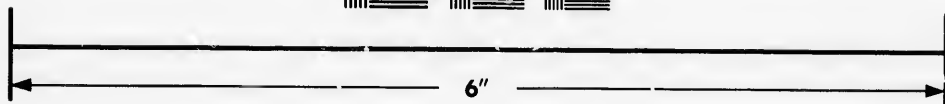
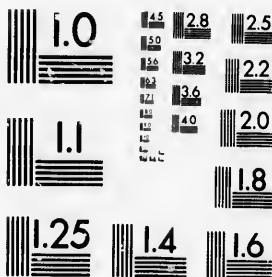


**IMAGE EVALUATION  
TEST TARGET (MT-3)**



**Photographic  
Sciences  
Corporation**

23 WEST MAIN STREET  
WEBSTER, N.Y. 14580  
(716) 872-4503

**CIHM/ICMH  
Microfiche  
Series.**

**CIHM/ICMH  
Collection de  
microfiches.**



Canadian Institute for Historical Microreproductions / Institut canadien de microreproductions historiques

**© 1986**

Technical and Bibliographic Notes/Notes techniques et bibliographiques

The Institute has attempted to obtain the best original copy available for filming. Features of this copy which may be bibliographically unique, which may alter any of the images in the reproduction, or which may significantly change the usual method of filming, are checked below.

L'Institut a microfilmé le meilleur exemplaire qu'il lui a été possible de se procurer. Les détails de cet exemplaire qui sont peut-être uniques du point de vue bibliographique, qui peuvent modifier une image reproduite, ou qui peuvent exiger une modification dans la méthode normale de filmage sont indiqués ci-dessous.

- Coloured covers/  
Couverture de couleur
- Covers damaged/  
Couverture endommagée
- Covers restored and/or laminated/  
Couverture restaurée et/ou pelliculée
- Cover title missing/  
Le titre de couverture manque
- Coloured maps/  
Cartes géographiques en couleur
- Coloured ink (i.e. other than blue or black)/  
Encre de couleur (i.e. autre que bleue ou noire)
- Coloured plates and/or illustrations/  
Planches et/ou illustrations en couleur
- Bound with other material/  
Relié avec d'autres documents
- Tight binding may cause shadows or distortion along interior margin/  
La reliure serrée peut causer de l'ombre ou de la distorsion le long de la marge intérieure
- Blank leaves added during restoration may appear within the text. Whenever possible, these have been omitted from filming/  
Il se peut que certaines pages blanches ajoutées lors d'une restauration apparaissent dans le texte, mais, lorsque cela était possible, ces pages n'ont pas été filmées.

- Coloured pages/  
Pages de couleur
- Pages damaged/  
Pages endommagées
- Pages restored and/or laminated/  
Pages restaurées et/ou pelliculées
- Pages discoloured, stained or foxed/  
Pages décolorées, tachetées ou piquées
- Pages detached/  
Pages détachées
- Showthrough/  
Transparence
- Quality of print varies/  
Qualité inégale de l'impression
- Includes supplementary material/  
Comprend du matériel supplémentaire
- Only edition available/  
Seule édition disponible
- Pages wholly or partially obscured by errata slips, tissues, etc., have been refilmed to ensure the best possible image/  
Les pages totalement ou partiellement obscurcies par un feuillet d'errata, une pelure, etc., ont été filmées à nouveau de façon à obtenir la meilleure image possible.

- Additional comments: [Printed ephemera] [4] p.  
Commentaires supplémentaires:

This item is filmed at the reduction ratio checked below/  
Ce document est filmé au taux de réduction indiqué ci-dessous.

10X	12X	14X	16X	18X	20X	22X	24X	26X	28X	30X	32X
									✓		

The copy filmed here has been reproduced thanks to the generosity of:

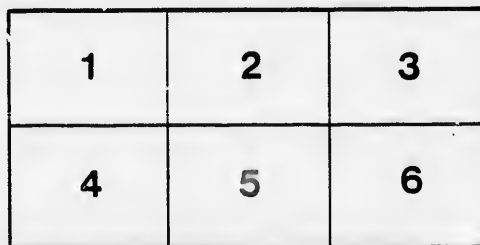
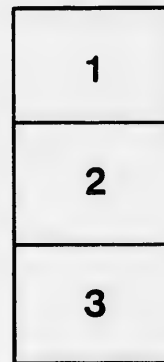
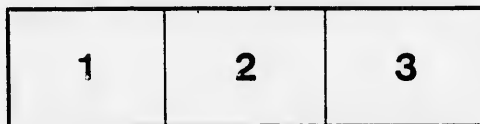
D. B. Weldon Library  
University of Western Ontario  
(Regional History Room)

The images appearing here are the best quality possible considering the condition and legibility of the original copy and in keeping with the filming contract specifications.

Original copies in printed paper covers are filmed beginning with the front cover and ending on the last page with a printed or illustrated impression, or the back cover when appropriate. All other original copies are filmed beginning on the first page with a printed or illustrated impression, and ending on the last page with a printed or illustrated impression.

The last recorded frame on each microfiche shall contain the symbol  $\rightarrow$  (meaning "CONTINUED"), or the symbol  $\nabla$  (meaning "END"), whichever applies.

Maps, plates, charts, etc., may be filmed at different reduction ratios. Those too large to be entirely included in one exposure are filmed beginning in the upper left hand corner, left to right and top to bottom, as many frames as required. The following diagrams illustrate the method:



L'exemplaire filmé fut reproduit grâce à la générosité de:

D. B. Weldon Library  
University of Western Ontario  
(Regional History Room)

Les images suivantes ont été reproduites avec le plus grand soin, compte tenu de la condition et de la netteté de l'exemplaire filmé, et en conformité avec les conditions du contrat de filmage.

Les exemplaires originaux dont la couverture en papier est imprimée sont filmés en commençant par le premier plat et en terminant soit par la dernière page qui comporte une empreinte d'impression ou d'illustration, soit par le second plat, selon le cas. Tous les autres exemplaires originaux sont filmés en commençant par la première page qui comporte une empreinte d'impression ou d'illustration et en terminant par la dernière page qui comporte une telle empreinte.

Un des symboles suivants apparaîtra sur la dernière image de chaque microfiche, selon le cas: le symbole  $\rightarrow$  signifie "A SUIVRE", le symbole  $\nabla$  signifie "FIN".

Les cartes, planches, tableaux, etc., peuvent être filmés à des taux de réduction différents. Lorsque le document est trop grand pour être reproduit en un seul cliché, il est filmé à partir de l'angle supérieur gauche, de gauche à droite, et de haut en bas, en prenant le nombre d'images nécessaire. Les diagrammes suivants illustrent la méthode.

If you see it in the "London Free Press" it is so.

**REPD AND REFLECT.**

**NOTICE TO OUR PATRONS**—If the individual members of an audience would stop to think for just an instant, they would undoubtedly appreciate the fact that the habit of rising from one's seat and leaving the theatre before the curtain falls, is a most annoying one, and one that should be stopped. We therefore beg our auditors to kindly remain in their seats until the close of the performance.

Evenings—doors open at 7:30; curtain rises at 8:15 sharp. Matinee—doors open at 12:30; curtain rises at 2:30 sharp.

The plan of the House will be kept at the concessionary parlors of Mr. Hewitt Fysh, King and Richmond Streets, corner of the Opera House building, where all seats may be reserved up till seven o'clock on the evening of performance.

Plan opens for each attraction two days in advance.



Seats can be secured by mail, telephone or telephone. Telephone 732.

Physicians are requested to register at the Box Office, leaving seat number, as this will enable Ushers to find them if called for, without disturbing the audience.

Carriages can be ordered at the Box Office or of the Chief Usher.

Please report to the management any intention on the part of the employees.

Overcoats, packages, and umbrellas checked for a small charge.

For all lost articles apply at Box Office.

Opera Glasses can be rented by applying to Ushers or at Box Office.

It is strange, but there is a class of people that seem to take an intense delight in bespattering the floor with tobacco juice and in being boisterous and using profane language. These people should know at once that the courts authorize their immediate expulsion, should the management see fit to exercise its rights.

**B**ETWEEN the Acts, and after the Opera is over go to the

**OPERA + CIGAR**

**STORE**

For Cigars, Cigarettes, Etc.  
LOUIS RISK

**W. T. STRONG,**

Dispensing +  
+ Chemist

184 Dundas Street,  
LONDON - - - ONTARIO.

ASK FOR

**Rivard's Special**

English Stiff Hat.

Latest Fall Style.

ONLY \$2.00.

ALSO OUR

**THEATRE HAT**

A Nobby Soft Felt in Black, Blue and Brown,  
Just the thing for the Theatre.



London's Fashionable Hatter.  
1400 RICHMOND STREET.

C. J. WHITNEY ..... LESSEE AND MANAGER.  
A. E. ROOTE ..... LOCAL MANAGER.  
FRED. L. EVANS ..... DIRECTOR OF ORCHESTRA.  
GUS SCHABACKER ..... STAGE MANAGER.  
JAMES LAMB ..... CHIEF USHER.

Thanksgiving Matinee & Night.

**PROGRAMME.**

THE COMEDIAN

A. H. WOODHULL,

—SUPPORTED BY—

MISS TROJA GRISWOLD,

In the Picture of American Life, in Four Acts.

**"Uncle Hiram"**

Tour Under Direction of HARRY HARDY.

(Programme continued on Page 3)

J. S. ASHPLANT. Telephone 881. J. S. BROWN.

PRETTY SLIPPERS FOR PRETTY FEET  
OF ALL COLORS, TRY

**ASHPLANT & BROWN**

—OUR—

Rubbers and Overshoes

Are of first quality only, of PURE GUM, try

145 DUNDAS STREET, (D. REGAN'S OLD STAND)

—FOR—

**STYLISH FOOTWEAR**

Men's Patent Dress Boots a Specialty at

**CENTRAL SHOE STORE.**

**HE'S ALL RIGHT.**

There is no better time than now to select your Holiday Presents. Make up your mind to get something nice in *our line* this year for yourself and friends. What is Home without a Musical Instrument? You can buy everything Musical, of the best quality, at "Colwell's Popular Music House," 171 Dundas Street. We make a specialty of the genuine Heintzman Pianos, Godefrich Organs and White Sewing Machines; but can supply any others made. We also have an endless variety of small Musical Instruments, Strings, Fittings, Music Books, Music Holders, etc. We are offering reduced prices in all departments, and guarantee everything we sell. Telephone 97 or 87.

CHAS. F. COLWELL,

Official Issuer of Marriage Licenses

The only place in the City to get the latest

**SUARNS.**



The Furnisher.

A MAN

Wants to see you Between Acts

**Jerry McDonald's**

Across the Road.

131 KING STREET.

Look out for the "London Free Press" on all early morning trains.

# Burns

\* \* **SAYS**  
That the **D. B. Sae Suit**  
Will lead this Fall.

AND HE IS RIGHT.

**GREAT  
PRIZE SALE**

Every Cash Customer buying One Dollar's  
worth or more of

WALL PAPER,

WINDOW SHADES,

CORNICE POLES,

ARTISTS' MATERIALS,

PICTURE FRAMES,

PICTURES,

ETC., ETC., ETC.

Stands the chance of securing a Prize worth from \$1.00  
to \$20.00 according to amount of purchase.

**E. N. HUNT,**  
190 DUNDAS ST., LONDON.

## Attractions Booked.

A partial list of the attractions that will follow in the course of the season includes—  
Rhea; Conoid; The Bostonians in Robin Hood; Guy Brothers' Minstrels; Ramsey Morris; Potter of Texas; Mand Granger; Theodore Thomas' Orchestra; Private Secretary; Robert Mantell; C. B. Hanford, in a grand spectacular production of Julius Caesar; Good Old Times; Stowaway; Gas Hills' World of Novelties; Rosina Vokes; Tuxedo; After Dark; Jerry; James O'Neill; Margaret Mather; T. E. Shea; Katharine Rober; Ezra Kendall; Lillian Lewis; Tar and Tartar; and many others of the strongest attractions on the road.



NEXT MONDAY NIGHT,

**M'ile Rhea**

And her fine Company will be seen at this Opera House in Albert Roland Haven's historical drama, "Josephine." This superb play has been acted by Rhea in all of the leading American cities and so unmistakable was the popular demand for it that Manager W. D. Londonn (wisely, it is believed) determined to revive it for the current theatrical year. All the properties, scenery, and other accessories of her magnificent revival are, it is said, even superior to those which marked this drama during its first memorable and productive tour.



## Marshall's \* Mammoth \* Livery

IS THE LARGEST AND THE OLDEST  
ESTABLISHMENT IN THE CITY.

DOES THE LEADING BUSINESS IN

Carriages, Cabs, Coupes, \*  
\* Victorias, Busses, Etc.

Every kind of Conveyance can be had there on the  
shortest notice, by Telephone No. 436.

**JAS. S. MARSHALL, Proprietor.**

Dundas Street.

London, Ont.

## The Elegant Furniture

You see on the stage this evening,  
is from the establishment of

### JAMES KILGOUR,

—MANUFACTURER OF—

## Fine Parlor Suites, Easy Chairs,

and Turkish Lounges, made to order only.

353 RICHMOND STREET.

## For Fashionable WELL MADE SUITS

... CALL ON ...

# Burns

## The Tailor,

Dundas Street.

# Artistic \* Floral \* Design

EITHER WEDDING, PRESENTATION, DINNER TABLE, OR FUNERAL.

GO TO **DILLOWAY,**

The Leading Florist.

248 Dundas Street,

Choicest Cut Flowers Always on Hand.

TELEPHONE 587.

◀AFTER THE PERFORMANCE▶

—STOP AT—

**Harry McKenna's,**

—FOR—

Choice Havana Cigars & \*  
\* \* \* Tobacco Sundries.

225 Dundas Street.

Always Open After Performance.

**SMITH BROS.**

Plumbers,  
Steam and Gas Fitters,

ESTIMATES FURNISHED ON APPLICATION.

All Work Warranted. Terms Moderate.

378 RICHMOND STREET.  
(Opposite Masonic Temple.)

Telephone No. 538.

**THE TECUMSEH,**  
London, Ontario.



Leading Hotel of Western Ontario.

Large Sample Rooms Free of Charge.  
Baggage and Passenger Elevator.

Only one Block from the Grand Opera House.

**C. W. DAVIS,**  
PROPRIETOR.

White · Sulphur · Springs · Baths  
FAMOUS HEALTH RESORT,  
**The Saratoga of Canada.**  
IN CONNECTION WITH THE HOTEL.

Great Attraction to Visitors Seeking Health.  
C. W. DAVIS, Treasurer. A. D. HOLMAN, Manager.

+ THE LATEST ENGLISH +  
Collars, · Cuffs · and · Shirts.  
ALL SIZES ALWAYS IN STOCK.

**Burns**

—DUNDAS STREET.—

— GAST. —



HIRAM HOMESPUN ..... AARON WOODHULL  
Arthur Murdock, a forger ..... Jas. Stensen  
Jas. Redland, a banker ..... Jerome Ball  
Robt. Callington, Uncle Hiram's Nephew ..... D. J. McDonald  
Sen. Josp. King, a busted speculator ..... J. J. Swartwood  
Knot Martin, the Chicken ..... Harry S. Sargent  
Cupid, a colored waiter ..... Geo. Thomas  
Si Strutters, a mill hand ..... Geo. Downing  
Edith Redland, in love with Bob ..... Elaine Blanchard  
BELLA, Redland's youngest child ..... }  
WILLIE DOT, a young man of the "period" ..... }  
KATARINA JOHANNA VON BLUMENBURGER }  
MISS TROJA GRISWOLD

(Programme Continued on Page 4).

"That remains to be seen," as the boy said when he spilt the Ink on the Table Cloth.

IT DON'T REMAIN TO BE SEEN THAT BELTZ'S HATS WEAR WELL IT IS A KNOWN FACT.

**E. Beltz, 144 Dundas St.**

LEADING FASHIONABLE HATTER & FURRIER.

FINE QUALITY GOLD MEDAL

**HATS. FURS.**

WORTH MONEY—Mrs. Binks—"The paper says Splasher got \$10,000 for his painting, 'The Last of the Buffalos.'" Mr. Binks—"Yes, Buffalos is becoming so scarce that even the picture of one is worth money."

The Asiatic Buffalo is now sold by Beltz instead.

THE LEADING JEWELRY HOUSE  
OF LONDON,

—FOR—

Diamonds, Watches, and Fine Jewelry.

OPERA GLASSES FOR RENT.

**THOS. GILLEAN,**  
402 Richmond Street.  
Issuer of Marriage Licenses.

For Fine Finished Artistic Photos

—GO TO—

**Westlake's**  
\* Famous Studio  
201 Dundas Street.

Get the Latest Novelties.

Photo Etchings and Aristo Finish.

STUDIO ALL ON GROUND FLOOR.

City Views can be had. Phone 571.

**Wallace's Dining Hall**  
AND CONFECTIONERY.  
354 Richmond Street.

Lunches at all hours.

Hot Tea and Coffee.

Oysters in every style.

Choice Cakes,  
Candies, Etc.

GIVE US A CALL

**OFFICE RESTAURANT**

Opposite the Masonic Temple, Richmond St.

CHOICE WINES,  
LIQUORS, ALES,  
CIGARS, ETC.

Restaurant on the European Plan.  
OYSTERS IN EVERY STYLE.

**D. SARE,**  
Proprietor.

Look out for the "London Free Press" on all early morning Trains.

## VASELINE.

EVERYBODY knows the great value of this remedy in the household, but everybody does not know that the imitations of it, which some second class druggists dishonestly palm off on their customers, have little or no value. What should be understood by the public is, that it is not a mere question of comparative value between "Vaseline" and the imitations, but that the imitations do not effect the wonderful healing results of the world renowned "Vaseline," and that they are not the same thing nor made in the same way. Besides this, many of the imitations are harmful, irritable and not safe to use, while true Vaseline is perfectly harmless.

Perfect safety therefore lies in buying only original packages put up by and marked with our name.

CHESEBROUGH MFG CO.

## FLOWERS

—FOR—

### OPERA OR BALL

—AT—

## GAMMAGE'S

Duffield Block, 213 Dundas Street.

FRESH EVERY DAY.

TELEPHONE 807.

NEXT ATTRACTION.

The Great New York Success.

4 L'S FRIDAY, NOV. 11 4 L'S

## LILLIAN

The Greatest of Modern Plays.  
The Greatest of Young Actresses.  
A Production Completely Grand.  
Realism, Spectacle, Comedy, Drama Combined.  
A Grand Play, Grandly Acted, Grandly Staged.

## LEWIS

The Amphitheatre of the Circus.  
The Famous Horse, Tomanoof.  
The Sisters of Mercy on the Battlefield.  
Rajah, the Man Eating Tiger.  
Establishment of Telegraph Communications.

## LADY

The Most Gorgeous Co-tines.  
Hassan Killed by Rajah.  
The Playing of the Faith Curer.  
Beautiful Scenery. Magnificent Uniforms.

4 L'S LIL 4 L'S

PRICES Circle, \$1.00. Parquette, 75c.  
Balcony, 50c. Gallery, 25c.

Reserved Seats now on sale at Fysh's

• • LADIES' TAILOR-MADE • •

COSTUMES & RIDING HABITS.

# Burns

154 Dundas Street



ACT I.—Scene 1. Redland's Mansion. Scene 2. Water Street, New York.

ACT II.—Uncle Hitan's Saw Mill.

ACT III.—Murdock's Gambling Parlors.

ACT IV.—Picnic Grove on Staten Island.

### EXECUTIVE STAFF FOR MR. WOODHULL.

Harry Hardy..... Manager  
Harry Green..... Treasurer  
Geo. Thomas..... Master Machinist and Electrician  
Harry Hodgkins..... Musical Director

IN ACTIVE PREPARATION,

Mr. Woodhull's New Society Comedy,

## "A THOROUGHbred."

The Orchestra, under the direction of Mr. Fred. L. Evans, will render the following selections:

OVERTURE—Le Cheval de Bronze..... *Auber*  
POLONAISE—Wedding..... *Lentner*  
WALTZ—Lust und Leber..... *Gungl*  
PLANTATION SKETCH—Darkies' Reverie..... *Cox*

Open Glasses can be rented by applying to Esters or at Box Office.

## Between the Acts

GO TO

# FYSH'S

FOR

Ice Cream, Soda Water, + + +  
+ + Fine Confectionery, Etc.

Cor. Richmond and King Streets.  
(Opera House Building.)

Branch at 220 Dundas Street.

## W. T. STRONG,

Dispensing \*

\* \* Chemist

184 Dundas Street,

LONDON, - - - ONTARIO

## Parisian Steam Laundry

73 and 75 DUNDAS ST.



Laundry work transferred free of charge to and from Toronto, Hamilton, Brantford, Woodstock, Stratford, Guelph, London, St. Thomas, Chatham, Windsor and Sarnia.

J. K. SPRY, Manager.

Lillian Lewis' new play, "Lady Lil," is a dream of action, of bustle, of incident and panoramic stage pictures. There is the departure of the army, ready for action, the flaying of the faith curer, the ministering of the sisters of mercy on the battlefield, the trial, conviction, sentence and execution of the spy, the establishment of a field telegraph during action, the vivid battle description of "Lady Lil," and the heroic operator who, wounded to death, clings to his post and falls dead on duty. Then comes the circus amphitheatre, with its acrobats and clowns, its spangles and its tights. "Lillian Lewis" herself as "Lady Lil" in green tights, as a bare-back rider, the man eating tiger, Rajah, and the eating of Hassan by the beast. If this is not enough action, bustle and incident for one play, playwrights better pack up and close shop. Lawrence Harston wrote "Lady Lil" for Lillian Lewis, believing the public wanted such a play, and he was right, for the business done by "Lady Lil" has been enormous.



