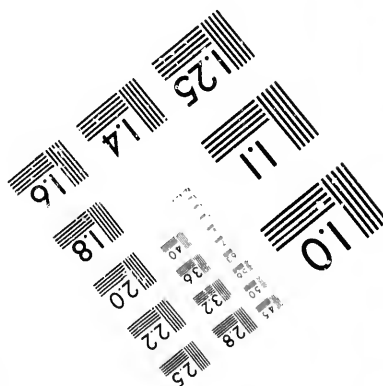
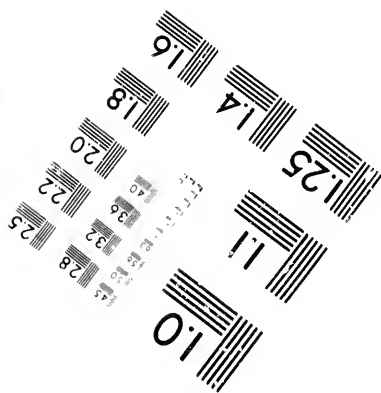
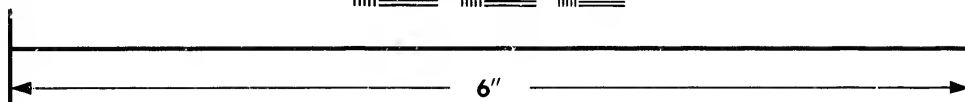
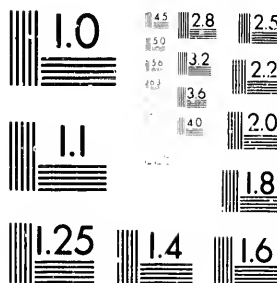


IMAGE EVALUATION  
TEST TARGET (MT-3)



Photographic  
Sciences  
Corporation

23 WEST MAIN STREET  
WEBSTER, N.Y. 14580  
(716) 872-4503

**CIHM/ICMH  
Microfiche  
Series.**

**CIHM/ICMH  
Collection de  
microfiches.**



Canadian Institute for Historical Microreproductions / Institut canadien de microreproductions historiques

**© 1981**

Technical and Bibliographic Notes/Notes techniques et bibliographiques

The Institute has attempted to obtain the best original copy available for filming. Features of this copy which may be bibliographically unique, which may alter any of the images in the reproduction, or which may significantly change the usual method of filming, are checked below.

L'Institut a microfilmé le meilleur exemplaire qu'il lui a été possible de se procurer. Les détails de cet exemplaire qui sont peut-être uniques du point de vue bibliographique, qui peuvent modifier une image reproduite, ou qui peuvent exiger une modification dans la méthode normale de filmage sont indiqués ci-dessous.

Coloured covers/  
Couverture de couleur

Covers damaged/  
Couverture endommagée

Covers restored and/or laminated/  
Couverture restaurée et/ou pelliculée

Cover title missing/  
Le titre de couverture manque

Coloured maps/  
Cartes géographiques en couleur

Coloured ink (i.e. other than blue or black)/  
Encre de couleur (i.e. autre que bleue ou noire)

Coloured plates and/or illustrations/  
Planches et/ou illustrations en couleur

Bound with other material/  
Relié avec d'autres documents

Tight binding may cause shadows or distortion along interior margin/  
La reliure serrée peut causer de l'ombre ou de la distorsion le long de la marge intérieure

Blank leaves added during restoration may appear within the text. Whenever possible, these have been omitted from filming/  
Il se peut que certaines pages blanches ajoutées lors d'une restauration apparaissent dans le texte, mais, lorsque cela était possible, ces pages n'ont pas été filmées.

Additional comments:/  
Commentaires supplémentaires:

Coloured pages/  
Pages de couleur

Pages damaged/  
Pages endommagées

Pages restored and/or laminated/  
Pages restaurées et/ou pelliculées

Pages discoloured, stained or foxed/  
Pages décolorées, tachetées ou piquées

Pages detached/  
Pages détachées

Showthrough/  
Transparence

Quality of print varies/  
Qualité inégale de l'impression

Includes supplementary material/  
Comprend du matériel supplémentaire

Only edition available/  
Seule édition disponible

Pages wholly or partially obscured by errata slips, tissues, etc., have been refilmed to ensure the best possible image/  
Les pages totalement ou partiellement obscurcies par un feuillet d'errata, une pelure, etc., ont été filmées à nouveau de façon à obtenir la meilleure image possible.

This item is filmed at the reduction ratio checked below/  
Ce document est filmé au taux de réduction indiqué ci-dessous.

10X	14X	18X	22X	26X	30X
<input type="checkbox"/>	<input type="checkbox"/>	<input type="checkbox"/>	<input type="checkbox"/>	<input checked="" type="checkbox"/>	<input type="checkbox"/>
12X	16X	20X	24X	28X	32X

The copy filmed here has been reproduced thanks to the generosity of:

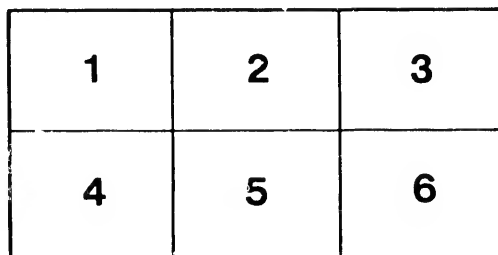
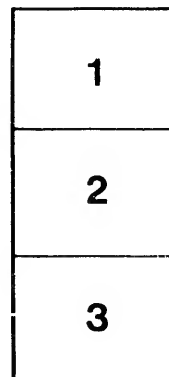
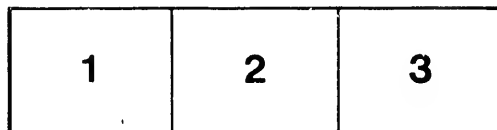
Library of Congress  
Photoduplication Service

The images appearing here are the best quality possible considering the condition and legibility of the original copy and in keeping with the filming contract specifications.

Original copies in printed paper covers are filmed beginning with the front cover and ending on the last page with a printed or illustrated impression, or the back cover when appropriate. All other original copies are filmed beginning on the first page with a printed or illustrated impression, and ending on the last page with a printed or illustrated impression.

The last recorded frame on each microfiche shall contain the symbol  $\rightarrow$  (meaning "CONTINUED"), or the symbol  $\nabla$  (meaning "END"), whichever applies.

Maps, plates, charts, etc., may be filmed at different reduction ratios. Those too large to be entirely included in one exposure are filmed beginning in the upper left hand corner, left to right and top to bottom, as many frames as required. The following diagrams illustrate the method:



L'exemplaire filmé fut reproduit grâce à la générosité de:

Library of Congress  
Photoduplication Service

Les images suivantes ont été reproduites avec le plus grand soin, compte tenu de la condition et de la netteté de l'exemplaire filmé, et en conformité avec les conditions du contrat de filmage.

Les exemplaires originaux dont la couverture en papier est imprimée sont filmés en commençant par le premier plat et en terminant soit par la dernière page qui comporte une empreinte d'impression ou d'illustration, soit par le second plat, selon le cas. Tous les autres exemplaires originaux sont filmés en commençant par la première page qui comporte une empreinte d'impression ou d'illustration et en terminant par la dernière page qui comporte une telle empreinte.

Un des symboles suivants apparaîtra sur la dernière image de chaque microfiche, selon le cas: le symbole  $\rightarrow$  signifie "A SUIVRE", le symbole  $\nabla$  signifie "FIN".

Les cartes, planches, tableaux, etc., peuvent être filmés à des taux de réduction différents. Lorsque le document est trop grand pour être reproduit en un seul cliché, il est filmé à partir de l'angle supérieur gauche, de gauche à droite, et de haut en bas, en prenant le nombre d'images nécessaire. Les diagrammes suivants illustrent la méthode.

ils  
du  
diffier  
ne  
age

rata  
o

elure,  
à

32X

SPEECH-TEACHING IN AMERICAN SCHOOLS

STATISTICS FROM THE "AMERICAN ANTHROPOLOGICAL ARCHIVES"

266  
55-30<sup>a</sup>

COMPILED BY

ALEXANDER GRAHAM BELL



AMERICAN SCHOOLS FOR THE DEAF

AMERICAN ANNALS OF THE DEAF

COMPILED BY

ANDERSON GRAHAM BELL

LIBRARY OF CONGRESS  
1898  
OF WASHINGTON

*To the Members of the American Association for  
the Teaching of Speech to the Deaf.*

The main object of our Association is, "To  
to teach speech and speech-reading, . . . to the  
be allowed to grow up 'deaf and dumb' or 'mut  
having been made to teach him to speak and to  
February 16, 1891).

The following Graphical Charts show the res

*American Association to Promote  
Teach to the Deaf.*

Association is, "To aid schools for the deaf in their efforts  
teaching, . . . to the end that no deaf child in America shall  
be left 'dumb' or 'mute' without earnest and persistent efforts  
to be made to speak and to read the lips" (CONSTITUTION, adopted

Charts show the results of attempts made to attain this end.



CHARTS SHOWING

TS SHOWING PERCENTAGES.

ALABAMA.

*Alabama Institute for the Deaf, Talladega, Ala.*

	TAUGHT SPEECH.	NOT TAUGHT SPEECH.
1884.		
1885.	20	
1886.	20	
1887.	17	
1888.		
1889.	22	
1890.	23	
1891.	22	

ARKANSAS.

*Arkansas Deaf-Mute Institute, Little Rock, Ark.*

	TAUGHT SPEECH.	NOT TAUGHT SPEECH.
1884.	31	
1885.	70	
1886.	33	
1887.	28	
1888.	24	
1889.	23	
1890.	20	
1891.	20	

CALIFORNIA.

*California Institution for the Education of the Deaf and Dumb and the Blind, Berkeley, Cal.*

	TAUGHT SPEECH.	NOT TAUGHT SPEECH.
1884.	26	
1885.	27	
1886.	29	
1887.	25	
1888.	27	
1889.	24	
1890.	43	
1891.	43	

COLORADO.

*Colorado School for the Deaf and the Blind, Colorado Springs, Col.*

	TAUGHT SPEECH.	NOT TAUGHT SPEECH.
1884.	27	
1885.	20	
1886.	34	
1887.	51	
1888.	22	
1889.	22	
1890.	36	
1891.	55	

CONNECTICUT.

*American Asylum for the Education and Instruction of the Deaf and Dumb, Hartford, Conn.*

	TAUGHT SPEECH.	NOT TAUGHT SPEECH.
1884.	21	
1885.	23	
1886.	32	
1887.	47	
1888.	52	
1889.	57	
1890.	61	
1891.	71	

CONNECTICUT.

*Whipple's Home School for the Deaf, Mystic, Conn.*

	TAUGHT SPEECH.	NOT TAUGHT SPEECH.
1884.	100	
1885.	100	
1886.	100	
1887.	100	
1888.	100	
1889.	100	
1890.	100	
1891.	100	

DISTRICT OF COLUMBIA.

*Kendall School for the Deaf (Primary Department of the Columbia Institution for the Deaf and Dumb), Washington, D.C.*

	TAUGHT SPEECH.	NOT TAUGHT SPEECH.
1884.	66	
1885.	66	
1886.	51	
1887.	43	
1888.	57	
1889.	51	
1890.	59	
1891.	51	

DISTRICT OF COLUMBIA.

*National Deaf-Mute College (Collegiate Department of the Columbia Institution for the Deaf and Dumb), Washington, D.C.*

	TAUGHT SPEECH.	NOT TAUGHT SPEECH.
1884.		
1885.		
1886.		
1887.		
1888.		
1889.		
1890.		
1891.	95	

DISTRICT OF COLUMBIA.

*Mr. Bell's Private School for Deaf Children, Washington, D.C.*

	TAUGHT SPEECH.	NOT TAUGHT SPEECH.
1884.	100	
1885.	100	
1886.		
1887.		
1888.		
1889.		
1890.		
1891.		

FLORIDA.

*The Florida Blind and Deaf-Mute Institute, St. Augustine, Fla.*

	TAUGHT SPEECH.	NOT TAUGHT SPEECH.
1884.		
1885.	62	
1886.	62	
1887.	46	
1888.	60	
1889.	69	
1890.	55	
1891.	87	

GEORGIA.

*Georgia Institution for the Education of the Deaf and Dumb, Cave Spring, Ga.*

	TAUGHT SPEECH.	NOT TAUGHT SPEECH.
1884.	10	
1885.	8	
1886.	10	
1887.	4	
1888.	3	
1889.	3	
1890.	3	
1891.		

ILLINOIS.

*Illinois Institution for the Education of the Deaf and Dumb, Jacksonville, Ill.*

	TAUGHT SPEECH.	NOT TAUGHT SPEECH.
1884.	26	
1885.	26	
1886.	27	
1887.	30	
1888.	29	
1889.	30	
1890.	30	
1891.	46	

ILLINOIS.

Chicago Deaf-Mute Day Schools, Chicago, Ill.

	TAUGHT SPEECH.	NOT TAUGHT SPEECH.
1884.		
1885.	32	
1886.	23	
1887.	25	
1888.	25	
1889.	25	
1890.	34	
1891.	34	

ILLINOIS.

The McCook Oral School for Young Deaf Children, Englewood (Chicago), Ill.

	TAUGHT SPEECH.	NOT TAUGHT SPEECH.
1884.	100	
1885.	100	
1886.	100	
1887.	100	
1888.	100	
1889.	100	
1890.	98	
1891.	97	

ILLINOIS.

Ephpheta School for the Deaf, Chicago, Ill.

	TAUGHT SPEECH.	NOT TAUGHT SPEECH.
1884.		
1885.		
1886.		
1887.		
1888.	49	
1889.	65	
1890.	100	
1891.	94	

INDIANA.

Indiana Institution for the Education of the Deaf and Dumb, Indianapolis, Ind.

	TAUGHT SPEECH.	NOT TAUGHT SPEECH.
1884.	12	
1885.	16	
1886.	15	
1887.	17	
1888.	11	
1889.	23	
1890.	24	
1891.	20	

**INDIANA.**

*Evansville Public School for the Deaf, Evansville, Ind.*

	TAUGHT SPEECH.	NOT TAUGHT SPEECH.
1884.	.....	.....
1885.	.....	.....
1886.	17	.....
1887.	.....	.....
1888.	.....	.....
1889.	.....	.....
1890.	.....	.....
1891.	.....	.....

**IOWA.**

*Iowa Institution for the Education of the Deaf and Dumb, Council Bluffs, Iowa.*

	TAUGHT SPEECH.	NOT TAUGHT SPEECH.
1884.	.....	.....
1885.	25	.....
1886.	14	.....
1887.	14	.....
1888.	14	.....
1889.	8	.....
1890.	8	.....
1891.	8	.....

**IOWA.**

*Eastern Iowa School for the Deaf, Dubuque, Iowa.*

	TAUGHT SPEECH.	NOT TAUGHT SPEECH.
1884.	.....	.....
1885.	.....	.....
1886.	.....	.....
1887.	.....	.....
1888.	.....	.....
1889.	.....	.....
1890.	.....	.....
1891.	.....	.....

**KANSAS.**

*Kansas Institution for the Education of the Deaf and Dumb, Olathe, Kan.*

	TAUGHT SPEECH.	NOT TAUGHT SPEECH.
1884.	17	.....
1885.	22	.....
1886.	25	.....
1887.	30	.....
1888.	19	.....
1889.	20	.....
1890.	15	.....
1891.	20	.....

KENTUCKY.

Kentucky Institute for Deaf-Mutes, Danville, Ky.

TAUGHT SPEECH. NOT TAUGHT SPEECH.

1884.	11	.....	.....
1885.	10	.....	.....
1886.	9	.....	.....
1887.	10	.....	.....
1888.	7	.....	.....
1889.	10	.....	.....
1890.	10	.....	.....
1891.	34	.....	.....

LOUISIANA.

Louisiana School for the Deaf, Baton Rouge, La.

TAUGHT SPEECH. NOT TAUGHT SPEECH.

1884.	.....	.....	.....
1885.	.....	.....	.....
1886.	.....	.....	.....
1887.	.....	.....	.....
1888.	.....	.....	.....
1889.	.....	.....	.....
1890.	18	.....	.....
1891.	23	.....	.....

LOUISIANA.

New Orleans Public School for Deaf-Mutes, New Orleans, La.

TAUGHT SPEECH. NOT TAUGHT SPEECH.

1884.	.....	.....	.....
1885.	.....	.....	.....
1886.	.....	.....	.....
1887.	.....	.....	.....
1888.	.....	.....	.....
1889.	.....	.....	.....
1890.	.....	.....	.....
1891.	.....	.....	.....

LOUISIANA.

Catholic Institution for the Deaf and Dumb, Chincha, Mandeville, La.

TAUGHT SPEECH. NOT TAUGHT SPEECH.

1884.	.....	.....	.....
1885.	.....	.....	.....
1886.	.....	.....	.....
1887.	.....	.....	.....
1888.	.....	.....	.....
1889.	.....	.....	.....
1890.	.....	.....	.....
1891.	.....	.....	.....



MAINE.

*Portland School for the Deaf, Portland, Me.*

	TAUGHT SPEECH.	NOT TAUGHT SPEECH.
1884.	100	
1885.	100	
1886.	100	
1887.	100	
1888.	100	
1889.	100	
1890.	100	
1891.	100	

MARYLAND.

*Maryland School for the Deaf, Frederick, Md.*

	TAUGHT SPEECH.	NOT TAUGHT SPEECH.
1884.	63	
1885.	64	
1886.	66	
1887.	69	
1888.	68	
1889.	52	
1890.	51	
1891.	50	

MARYLAND.

*Maryland School for Colored Blind and Deaf, Baltimore, Md.*

	TAUGHT SPEECH.	NOT TAUGHT SPEECH.
1884.		
1885.		
1886.	53	
1887.		
1888.	71	
1889.		
1890.		
1891.		

MARYLAND.

*Mr. Knapp's Institute, Baltimore, Md.*

	TAUGHT SPEECH.	NOT TAUGHT SPEECH.
1884.		
1885.		
1886.		
1887.		
1888.	100	
1889.	100	
1890.		
1891.		

MASSACHUSETTS.

*Clarke Institution for Deaf-Mutes, Northampton, Mass.*

	TAUGHT SPEECH.	NOT TAUGHT SPEECH.
1884.	100	
1885.	100	
1886.	100	
1887.	100	
1888.	100	
1889.	100	
1890.	100	
1891.	100	

MASSACHUSETTS.

*Horace Mann School, Boston, Mass.*

	TAUGHT SPEECH.	NOT TAUGHT SPEECH.
1884.	100	
1885.	100	
1886.	100	
1887.	100	
1888.	100	
1889.	100	
1890.	100	
1891.	100	

MASSACHUSETTS.

*New England Industrial School for Deaf-Mutes, Beverly, Mass.*

	TAUGHT SPEECH.	NOT TAUGHT SPEECH.
1884.	45	
1885.	62	
1886.	59	
1887.	67	
1888.	68	
1889.	62	
1890.	72	
1891.	71	

MASSACHUSETTS.

*Sarah Fuller Home for Little Children who Cannot Hear, West Medford, Mass.*

	TAUGHT SPEECH.	NOT TAUGHT SPEECH.
1884.		
1885.		
1886.		
1887.		
1888.	100	
1889.	100	
1890.	100	
1891.	100	

**MICHIGAN.**

*Michigan School for the Deaf, Flint, Mich.*

	TAUGHT SPEECH.	NOT TAUGHT SPEECH.
1884.	13	
1885.	26	
1886.	17	
1887.	20	
1888.	21	
1889.	17	
1890.	15	
1891.	19	

**MICHIGAN.**

*German Lutheran Deaf and Dumb Institute,  
North Detroit, Wcyne Co., Mich.*

	TAUGHT SPEECH.	NOT TAUGHT SPEECH.
1884.	100	
1885.	100	
1886.	100	
1887.	100	
1888.	100	
1889.	100	
1890.	100	
1891.	100	

**MINNESOTA.**

*Minnesota School for the Deaf, Faribault, Minn.*

	TAUGHT SPEECH.	NOT TAUGHT SPEECH.
1884.	22	
1885.	24	
1886.	25	
1887.	21	
1888.	39	
1889.	46	
1890.	28	
1891.	41	

**MINNESOTA.**

*St. Mary's Institute for Deaf-Mutes, St. Paul, Minn.*

	TAUGHT SPEECH.	NOT TAUGHT SPEECH.
1884.		
1885.		
1886.		
1887.		
1888.		
1889.	100	
1890.	100	
1891.	100	

MISSISSIPPI.

Mississippi Institution for the Education of the Deaf and Dumb,  
Jackson, Miss.

TAUGHT SPEECH.

NOT TAUGHT SPEECH.

1884.	28	.....
1885.	30	.....
1886.	23	.....
1887.	27	.....
1888.	23	.....
1889.	27	.....
1890.	16	.....
1891.	16	.....

MISSOURI.

Missouri School for the Deaf and Dumb, Fulton, Mo.

TAUGHT SPEECH.

NOT TAUGHT SPEECH.

1884.	28	.....
1885.	28	.....
1886.	23	.....
1887.	25	.....
1888.	26	.....
1889.	21	.....
1890.	25	.....
1891.	24	.....

MISSOURI.

St. Louis Day School for the Deaf, St. Louis, Mo.

TAUGHT SPEECH.

NOT TAUGHT SPEECH.

1884.		.....
1885.		.....
1886.		.....
1887.		.....
1888.		.....
1889.		.....
1890.		.....
1891.	83	.....

MISSOURI.

St. Joseph's Deaf-Mute Institute, Hannibal, Mo.

TAUGHT SPEECH.

NOT TAUGHT SPEECH.

1884.		.....
1885.	41	.....
1886.	41	.....
1887.		.....
1888.		.....
1889.		.....
1890.		.....
1891.		.....

MISSOURI.

*Miss Parker's School for the Deaf, St. Louis, Mo.*

	TAUGHT SPEECH.	NOT TAUGHT SPEECH.
1884.	.....	.....
1885.	.....	.....
1886.	.....	.....
1887.	.....	.....
1888.	.....	.....
1889.	.....	.....
1890.	100	.....
1891.	.....	.....

MISSOURI.

*Maria Conella Deaf-Mute Institute, St. Louis, Mo.*

	TAUGHT SPEECH.	NOT TAUGHT SPEECH.
1884.	.....	.....
1885.	.....	.....
1886.	43	.....
1887.	11	.....
1888.	25	.....
1889.	37	.....
1890.	100	.....
1891.	80	.....

MISSOURI.

*Miss Kugler's School for the Deaf, St. Louis, Mo.*

	TAUGHT SPEECH.	NOT TAUGHT SPEECH.
1884.	.....	.....
1885.	.....	.....
1886.	.....	.....
1887.	.....	.....
1888.	.....	.....
1889.	.....	.....
1890.	.....	.....
1891.	100	.....

NEBRASKA.

*Nebraska Institute for the Deaf and Dumb, Omaha, Neb.*

	TAUGHT SPEECH.	NOT TAUGHT SPEECH.
1884.	21	.....
1885.	24	.....
1886.	23	.....
1887.	21	.....
1888.	35	.....
1889.	24	.....
1890.	33	.....
1891.	36	.....

**NEW JERSEY.**

*New Jersey School for the Deaf, Trenton, N.J.*

	TAUGHT SPEECH.	NOT TAUGHT SPEECH.
1884.	28	
1885.	18	
1886.	18	
1887.	28	
1888.		
1889.	31	
1890.		
1891.	32	

**NEW MEXICO.**

*New Mexico School for the Deaf and Dumb, Santa Fé, N.M.*

	TAUGHT SPEECH.	NOT TAUGHT SPEECH.
1884.		
1885.		
1886.		
1887.		
1888.		
1889.		
1890.		
1891.		

**NEW YORK.**

*New York Institution for the Instruction of the Deaf and Dumb, New York, N.Y.*

	TAUGHT SPEECH.	NOT TAUGHT SPEECH.
1884.		
1885.		
1886.		
1887.	100	
1888.	100	
1889.	100	
1890.	100	
1891.	98	

**NEW YORK.**

*Le Conteele St. Mary's Institution for the Improved Instruction of Deaf-Mutes, Buffalo, N.Y.*

	TAUGHT SPEECH.	NOT TAUGHT SPEECH.
1884.	56	
1885.	67	
1886.	67	
1887.	63	
1888.	92	
1889.	91	
1890.	92	
1891.	96	

**NEW YORK.**

*Institution for the Improved Instruction of Deaf-Mutes, New York, N. Y.*

	TAUGHT SPEECH.	NOT TAUGHT SPEECH.
1884.	100	.....
1885.	100	.....
1886.	100	.....
1887.	100	.....
1888.	100	.....
1889.	100	.....
1890.	100	.....
1891.	100	.....

**NEW YORK.**

*St. Joseph's Institute for the Improved Instruction of Deaf-Mutes, Fordham, N. Y.*

	TAUGHT SPEECH.	NOT TAUGHT SPEECH.
1884.	100	.....
1885.	100	.....
1886.	100	.....
1887.	70	.....
1888.	100	.....
1889.	100	.....
1890.	100	.....
1891.	88	.....

**NEW YORK.**

*Central New York Institution for Deaf-Mutes, Rome, N. Y.*

	TAUGHT SPEECH.	NOT TAUGHT SPEECH.
1884.	.....	.....
1885.	91	.....
1886.	10	.....
1887.	17	.....
1888.	12	.....
1889.	38	.....
1890.	100	.....
1891.	92	.....

**NEW YORK.**

*Western New York Institution for Deaf-Mutes, Rochester, N. Y.*

	TAUGHT SPEECH.	NOT TAUGHT SPEECH.
1884.	80	.....
1885.	100	.....
1886.	80	.....
1887.	82	.....
1888.	100	.....
1889.	100	.....
1890.	100	.....
1891.	100	.....

s, New York, N. Y.

T SPEECH.

.....  
.....  
.....  
.....  
.....  
.....  
.....

**NEW YORK.**

*Northern New York Institution for Deaf-Mutes, Malone, N. Y.*

TAUGHT SPEECH.

NOT TAUGHT SPEECH.

Year	Count	Category
1884.	16	TAUGHT SPEECH
1885.	19	TAUGHT SPEECH
1886.	23	TAUGHT SPEECH
1887.	26	TAUGHT SPEECH
1888.	27	TAUGHT SPEECH
1889.	16	TAUGHT SPEECH
1890.	30	TAUGHT SPEECH
1891.	30	TAUGHT SPEECH

s of Deaf-Mutes,

T SPEECH.

.....  
.....  
.....  
.....  
.....  
.....  
.....

**NEW YORK.**

*Miss Keeler's Articulation Class for Deaf-Mutes, New York, N. Y.*

TAUGHT SPEECH.

NOT TAUGHT SPEECH.

Year	Count	Category
1884.	0	TAUGHT SPEECH
1885.	0	TAUGHT SPEECH
1886.	0	TAUGHT SPEECH
1887.	0	TAUGHT SPEECH
1888.	100	TAUGHT SPEECH
1889.	100	TAUGHT SPEECH
1890.	100	TAUGHT SPEECH
1891.	100	TAUGHT SPEECH

Rome, N. Y.

T SPEECH.

.....  
.....  
.....  
.....  
.....  
.....  
.....

**NEW YORK.**

*Albany Home School for the Oral Instruction of the Deaf, Albany, N. Y.*

TAUGHT SPEECH.

NOT TAUGHT SPEECH.

Year	Count	Category
1884.	0	TAUGHT SPEECH
1885.	0	TAUGHT SPEECH
1886.	0	TAUGHT SPEECH
1887.	0	TAUGHT SPEECH
1888.	0	TAUGHT SPEECH
1889.	100	TAUGHT SPEECH
1890.	100	TAUGHT SPEECH
1891.	100	TAUGHT SPEECH

Rocheater, N. Y.

T SPEECH.

.....  
.....  
.....  
.....  
.....  
.....  
.....

**NORTH CAROLINA.**

*North Carolina Institution for the Deaf and Dumb and the Blind, Raleigh, N. C.*

TAUGHT SPEECH.

NOT TAUGHT SPEECH.

Year	Count	Category
1884.	20	TAUGHT SPEECH
1885.	20	TAUGHT SPEECH
1887.	12	TAUGHT SPEECH
1888.	8	TAUGHT SPEECH
1889.	8	TAUGHT SPEECH
1890.	10	TAUGHT SPEECH
1891.	8	TAUGHT SPEECH



**NORTH DAKOTA.**

*School for the Deaf of North Dakota, Devil's Lake, No. Dak.*

	TAUGHT SPEECH.	NOT TAUGHT SPEECH.
1884.		
1885.		
1886.		
1887.		
1888.		
1889.		
1890.		
1891. 20		

**OHIO.**

*Ohio Institution for the Education of the Deaf and Dumb, Columbus, Ohio.*

	TAUGHT SPEECH.	NOT TAUGHT SPEECH.
1884. 21		
1885. 17		
1886.		
1887. 21		
1888. 21		
1889. 24		
1890. 26		
1891. 28		

**OHIO.**

*Cincinnati Public School for the Deaf, Cincinnati, Ohio.*

	TAUGHT SPEECH.	NOT TAUGHT SPEECH.
1884.		
1885.		
1886.		
1887.		
1888.		
1889.		
1890.		
1891.		

**OHIO.**

*Cincinnati Oral School for the Deaf, Cincinnati, Ohio.*

	TAUGHT SPEECH.	NOT TAUGHT SPEECH.
1884.		
1885.		
1886. 100		
1887. 100		
1888. 100		
1889. 100		
1890. 100		
1891. 100		

No. Deaf.

SPEECH.

d Dumb,

SPEECH.

att, Ohio.

SPEECH.

att, Ohio.

SPEECH.

OHIO.

Toledo Deaf-Mute School, Toledo, Ohio.

TAUGHT SPEECH.

NOT TAUGHT SPEECH.

1884.	.....
1885.	.....
1886.	.....
1887.	.....
1888.	.....
1889.	.....
1890.	.....
1891.	.....

OHIO.

Cincinnati Catholic School for Deaf-Mutes, Cincinnati, Ohio.

TAUGHT SPEECH.

NOT TAUGHT SPEECH.

1884.	.....
1885.	.....
1886.	.....
1887.	.....
1888.	.....
1889.	.....
1890.	.....
1891.	.....

OHIO.

Notre Dame Female School for the Deaf, Cincinnati, Ohio.

TAUGHT SPEECH.

NOT TAUGHT SPEECH.

1884.	.....
1885.	.....
1886.	.....
1887.	.....
1888.	.....
1889.	.....
1890.	.....
1891.	100

OREGON.

Oregon School for Deaf-Mutes, Salem, Ore.

TAUGHT SPEECH.

NOT TAUGHT SPEECH.

1884.	.....
1885.	.....
1886.	11
1887.	16
1888.	20
1889.	21
1890.	33
1891.	42

PENNSYLVANIA.

*Pennsylvania Institution for the Deaf and Dumb,  
Philadelphia, Penn.*

	TAUGHT SPEECH.	NOT TAUGHT SPEECH.
1884.	38	
1885.	30	
1886.	31	
1887.	25	
1888.	24	
1889.	25	
1890.	24	
1891.	26	

PENNSYLVANIA.

*Western Pennsylvania Institution for the Instruction of the Deaf and  
Dumb, Edgewoodville, Penn.*

	TAUGHT SPEECH.	NOT TAUGHT SPEECH.
1884.	14	
1885.	20	
1886.	15	
1887.	18	
1888.	18	
1889.	14	
1890.	15	
1891.	23	

PENNSYLVANIA.

*Pennsylvania Oral School for the Deaf, Scranton, Penn.*

	TAUGHT SPEECH.	NOT TAUGHT SPEECH.
1884.	100	
1885.	100	
1886.	100	
1887.	100	
1888.	100	
1889.	100	
1890.	100	
1891.	100	

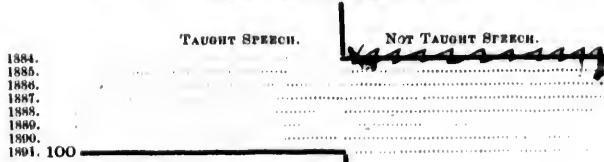
PENNSYLVANIA.

*Miss Mary Garrett's School for Deaf Children, Philadelphia, Penn.*

	TAUGHT SPEECH.	NOT TAUGHT SPEECH.
1884.		
1885.	100	
1886.	100	
1887.	100	
1888.	100	
1889.		
1890.		
1891.		

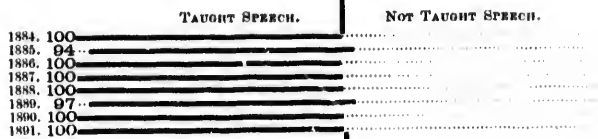
**PENNSYLVANIA.**

*Home for the Training in Speech of Deaf Children before they are of School Age, Philadelphia, Penn.*



**RHODE ISLAND.**

*Rhode Island School for the Deaf, Providence, R.I.*



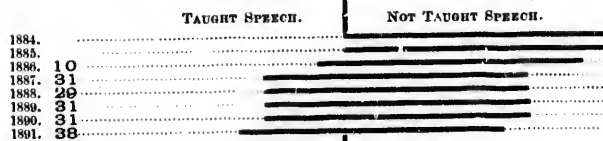
**SOUTH CAROLINA.**

*South Carolina Institution for the Education of the Deaf and Dumb and the Blind, Cedar Spring, S.C.*



**SOUTH DAKOTA.**

*Dakota School for Deaf-Mutes, Sioux Falls, So. Dak.*



**TENNESSEE.**

*Tennessee Deaf and Dumb School, Knoxville, Tenn.*

	TAUGHT SPEECH.	NOT TAUGHT SPEECH.
1884.	10	
1885.	9	
1886.	7	
1887.	7	
1888.	8	
1889.	9	
1890.	10	
1891.	58	

**TEXAS.**

*Texas Deaf and Dumb Asylum, Austin, Tex.*

	TAUGHT SPEECH.	NOT TAUGHT SPEECH.
1884.	19	
1885.	36	
1886.	17	
1887.	21	
1888.	19	
1889.	20	
1890.	23	
1891.	22	

**TEXAS.**

*Deaf, Dumb, and Blind Institution for Colored Youths, Austin, Tex.*

	TAUGHT SPEECH.	NOT TAUGHT SPEECH.
1884.		
1885.		
1886.		
1887.		
1888.	14	
1889.		
1890.	12	
1891.	12	

**UTAH.**

*Utah School for the Deaf, Salt Lake City, Utah.*

	TAUGHT SPEECH.	NOT TAUGHT SPEECH.
1884.		
1885.		
1886.		
1887.		
1888.		
1889.	10	
1890.		
1891.		

VIRGINIA.

*Virginia Institution for the Education of the Deaf and Dumb and of the Blind, Staunton, Va.*

	TAUGHT SPEECH.	NOT TAUGHT SPEECH.
1884.	50	
1885.	37	
1886.	44	
1887.	26	
1888.	34	
1889.	23	
1890.	22	
1891.	22	

WASHINGTON.

*Washington School for Defective Youth, Vancouver, Wash.*

	TAUGHT SPEECH.	NOT TAUGHT SPEECH.
1884.		
1885.		
1886.	30	
1887.	32	
1888.	23	
1889.	25	
1890.	27	
1891.	27	

WEST VIRGINIA.

*West Virginia School for the Deaf and the Blind, Romney, W. Va.*

	TAUGHT SPEECH.	NOT TAUGHT SPEECH.
1884.		
1885.	29	
1886.	29	
1887.		
1888.	40	
1889.	47	
1890.	55	
1891.	55	

WISCONSIN.

*Wisconsin School for the Deaf, Delavan, Wis.*

	TAUGHT SPEECH.	NOT TAUGHT SPEECH.
1884.	20	
1885.	26	
1886.	19	
1887.	19	
1888.	18	
1889.	19	
1890.	19	
1891.	21	

WISCONSIN.

*Milwaukee Day School for the Deaf, Milwaukee, Wis.*

	TAUGHT SPEECH.	NOT TAUGHT SPEECH.
1884.	.....	.....
1885. 100	=====	.....
1886. 100	=====	.....
1887. 100	=====	.....
1888. 100	=====	.....
1889. 100	=====	.....
1890. 100	=====	.....
1891. 100	=====	.....

WISCONSIN.

*La Crosse Oral School for the Deaf, La Crosse, Wis.*

	TAUGHT SPEECH.	NOT TAUGHT SPEECH.
1884.	.....	.....
1885.	.....	.....
1886.	.....	.....
1887.	.....	.....
1888. 100	=====	.....
1889. 100	=====	.....
1890. 100	=====	.....
1891. 100	=====	.....

WISCONSIN.

*Wausau Day School for the Deaf, Wausau, Wis.*

	TAUGHT SPEECH.	NOT TAUGHT SPEECH.
1884.	.....	.....
1885.	.....	.....
1886.	.....	.....
1887.	.....	.....
1888.	.....	.....
1889.	.....	.....
1890. 100	=====	.....
1891. 100	=====	.....

WISCONSIN.

*Fremont School for the Deaf, Oshkosh, Wis.*

	TAUGHT SPEECH.	NOT TAUGHT SPEECH.
1884.	.....	.....
1885.	.....	.....
1886.	.....	.....
1887.	.....	.....
1888.	.....	.....
1889.	.....	.....
1890.	.....	.....
1891.	.....	.....

WISCONSIN.

*St. John's Catholic Deaf-Mute Institute, St. Francis, Wis.*

	TAUGHT SPEECH.	NOT TAUGHT SPEECH.
1884.		
1885.	30	
1886.	37	
1887.	38	
1888.	36	
1889.	48	
1890.	65	
1891.	61	

BRITISH COLUMBIA.

*British Columbia School for Deaf-Mutes, Victoria, B.C., Canada.*

	TAUGHT SPEECH.	NOT TAUGHT SPEECH.
1884.		
1885.		
1886.		
1887.		
1888.	66	
1889.		
1890.		
1891.		

MANITOBA.

*Manitoba Institution for the Education of the Deaf, Winnipeg, Manitoba, Canada.*

	TAUGHT SPEECH.	NOT TAUGHT SPEECH.
1884.		
1885.		
1886.		
1887.		
1888.	40	
1889.		
1890.	10	
1891.	13	

NEW BRUNSWICK.

*New Brunswick Deaf and Dumb Institution, Portland, N.B., Canada.*

	TAUGHT SPEECH.	NOT TAUGHT SPEECH.
1884.		
1885.		
1886.		
1887.		
1888.		
1889.		
1890.		
1891.		



**NEW BRUNSWICK.**

*Fredericton Institution for the Education of the Deaf and Dumb,  
Fredericton, N.B., Canada.*

	TAUGHT SPEECH.	NOT TAUGHT SPEECH.
1884.	10	
1885.		
1886.		
1887.		
1888.	21	
1889.		
1890.	9	
1891.	7	

**NOVA SCOTIA.**

*Halifax Institution for the Deaf and Dumb, Halifax, N.S., Canada.*

	TAUGHT SPEECH.	NOT TAUGHT SPEECH.
1884.	18	
1885.	13	
1886.	13	
1887.		
1888.	21	
1889.	32	
1890.	42	
1891.	37	

**ONTARIO.**

*Ontario Institution for the Deaf and Dumb, Belleville, Ont., Canada.*

	TAUGHT SPEECH.	NOT TAUGHT SPEECH.
1884.	11	
1885.	12	
1886.	14	
1887.	15	
1888.	15	
1889.	15	
1890.	14	
1891.	15	

**PROVINCE OF QUEBEC.**

*Catholic Male Deaf and Dumb Institution for the Province of Quebec,  
Montreal, P. Q., Canada.*

	TAUGHT SPEECH.	NOT TAUGHT SPEECH.
1884.	40	
1885.	26	
1886.	34	
1887.	37	
1888.	25	
1889.	36	
1890.	49	
1891.	53	

and Dumb,

SPEECH.

N.S., Canada.

SPEECH.

, Ont., Canada.

SPEECH.

Province of Quebec,

SPEECH.

PROVINCE OF QUEBEC.

Catholic Female Deaf-Mute Institution, Montreal, P.Q., Canada.

TAUGHT SPEECH.

NOT TAUGHT SPEECH.

1884.	36	.....
1885.	32	.....
1886.	34	.....
1887.	33	.....
1888.	31	.....
1889.	31	.....
1890.	45	.....
1891.	37	.....

PROVINCE OF QUEBEC.

Mackay Institution for Protestant Deaf-Mutes and the Blind, Montreal, P.Q., Canada.

TAUGHT SPEECH.

NOT TAUGHT SPEECH.

1884.	17	.....
1885.	27	.....
1886.	30	.....
1887.	36	.....
1888.	36	.....
1889.	40	.....
1890.	52	.....
1891.	40	.....

THE FOLLOWING TABLES SHOW  
FOREGOING PERCENT

ING TABLES SHOW THE FIGURES UPON WHICH THE  
GOING PERCENTAGES HAVE BEEN BASED.

ALABAMA.

<i>Alabama Institute for the Deaf,</i> TALLADEGA, ALA.				
DATE.	PUPILS.		TEACHERS.	
	Total.	Taught Speech.	Total.	Articulation.
1884	53	0	5	-
1885	63	13	6	-
1886	74	15	6	1
1887	60	10	6	1
1888	66	-	7	2
1889	90	20	8	2
1890	104	24	8	2
1891	103	22	6	2

ARKANSAS.

<i>Arkansas Deaf-Mute Institute,</i> LITTLE ROCK, ARK.				
DATE.	PUPILS.		TEACHERS.	
	Total.	Taught Speech.	Total.	Articulation.
1884	73	23	6	-
1885	91	64	6	-
1886	112	37	7	1
1887	122	34	8	1
1888	132	32	8	1
1889	131	30	9	1
1890	140	28	9	1
1891	152	34	10	1

CONNECTICUT.

<i>American Asylum for the Education and Instruction of the Deaf and Dumb,</i> HARTFORD, CONN.				
DATE.	PUPILS.		TEACHERS.	
	Total.	Taught Speech.	Total.	Articulation.
1884	211	45	15	-
1885	204	48	16	-
1886	185	60	17	2
1887	180	85	15	3
1888	157	82	15	4
1889	160	91	16	4
1890	154	94	15	3
1891	171	121	16	4

CONNECTICUT.

<i>Whipple's Home School for the Deaf,</i> MYSTIC, CONN.				
DATE.	PUPILS.		TEACHERS.	
	Total.	Taught Speech.	Total.	Articulation.
1884	12	12	2	-
1885	12	12	2	-
1886	17	17	4	4
1887	20	20	4	4
1888	18	18	4	4
1889	25	25	3	3
1890	23	23	3	3
1891	28	28	4	4

MISSISSIPPI.

Deaf-Mute Institute, Little Rock, Ark.		
DATE.	TEACHERS.	
	Total.	Articulation.
1884	6	-
1885	6	-
1886	7	1
1887	8	1
1888	8	1
1889	9	1
1890	9	1
1891	10	1

CALIFORNIA.

California Institution for the Education of the Deaf and Dumb and the Blind, Berkeley, Cal.					
DATE.	PUPILS.		TEACHERS.		Articulation.
	Total.	Taught Speech.	Total.	Articulation.	
1884	135	35	9	-	
1885	138	38	9	-	
1886	137	40	10	1	
1887	143	36	9	1	
1888	147	40	11	2	
1889	145	46	11	2	
1890	158	68	11	2	
1891	158	68	11	2	

COLORADO.

Colorado School for the Deaf and the Blind, Colorado Springs, Col.					
DATE.	PUPILS.		TEACHERS.		Articulation.
	Total.	Taught Speech.	Total.	Articulation.	
1884	43	12	4	-	
1885	45	9	4	-	
1886	44	15	5	-	
1887	44	15	6	1	
1888	68	15	7	1	
1889	72	16	8	1	
1890	83	30	8	2	
1891	91	50	6	1	

CONNECTICUT.

Deaf-Mute School for the Deaf, Hartford, Conn.		
DATE.	TEACHERS.	
	Total.	Articulation.
1884	2	-
1885	2	-
1886	4	4
1887	4	4
1888	4	4
1889	3	3
1890	3	3
1891	4	4

DISTRICT OF COLUMBIA.

Kendall School for the Deaf, (Primary Department of the Columbia Institution for the Deaf and Dumb) Washington, D.C.					
DATE.	PUPILS.		TEACHERS.		Articulation.
	Total.	Taught Speech.	Total.	Articulation.	
1884	65	43	6	-	
1885	73	48	6	-	
1886	69	45	5	2	
1887	82	45	6	1	
1888	70	40	6	2	
1889	67	34	6	1	
1890	58	34	6	1	
1891	67	34	7	2	

DISTRICT OF COLUMBIA.

National Deaf-Mute College, (Collegiate Department of the Columbia Institution for the Deaf and Dumb) Washington, D.C.					
DATE.	PUPILS.		TEACHERS.		Articulation.
	Total.	Taught Speech.	Total.	Articulation.	
1884	54	0	9	-	
1885	48	0	9	-	
1886	59	0	9	0	
1887	60	0	9	0	
1888	68	0	9	0	
1889	65	0	9	0	
1890	71	0	9	0	
1891	66	63	19	10	

DISTRICT OF COLUMBIA.

*Mr. Bell's Private School for Deaf Children,*  
WASHINGTON, D.C.

DATE.	PUPILS.		TEACHERS.	
	Total.	Taught Speech.	Total.	Articulation.
1884	5	5	2	-
1885	6	6	3	-
1886				
1887				
1888				
1889				
1890				
1891				

FLORIDA.

*The Florida Blind and Deaf-Mute Institute,*  
ST. AUGUSTINE, FLA.

DATE.	PUPILS.		TEACHERS.	
	Total.	Taught Speech.	Total.	Articulation.
1884	-	-	-	-
1885	8	5	2	-
1886	8	5	2	-
1887	13	6	2	1
1888	16	11	3	2
1889	16	11	3	2
1890	18	10	2	1
1891	39	34	4	2

ILLINOIS.

*Chicago Deaf-Mute Day Schools,*  
CHICAGO, ILL.

DATE.	PUPILS.		TEACHERS.	
	Total.	Taught Speech.	Total.	Articulation.
1884	57	-	6	-
1885	45	10	6	-
1886	47	11	6	1
1887	48	12	6	2
1888	48	12	6	2
1889	48	12	6	2
1890	35	12	6	1
1891	35	12	6	1

ILLINOIS.

*The McCowen Oral School for Young Deaf Children,*  
ENGLEWOOD (CHICAGO), ILL.

DATE.	PUPILS.		TEACHERS.	
	Total.	Taught Speech.	Total.	Articulation.
1884	20	20	3	-
1885	23	23	5	-
1886	30	30	7	7
1887	27	27	6	5
1888	25	25	5	5
1889	25	25	5	5
1890	25	24	6	5
1891	32	31	8	8

## IDA.

*Idaho Institute for the Education of the Deaf and Mute,*  
BOZEMAN, IDAHO.

DATE.	TEACHERS.	
	Total.	Articulation.
1884	2	1
1885	2	1
1886	2	1
1887	2	1
1888	3	2
1889	3	2
1890	2	1
1891	4	2

## GEORGIA.

*Georgia Institution for the Education of the Deaf and Dumb,*  
CAVE SPRING, GA.

DATE.	PUPILS.		TEACHERS.	
	Total.	Taught Speech.	Total.	Articulation.
1884	103	10	6	-
1885	90	7	7	-
1886	98	10	7	0
1887	90	-	7	0
1888	88	4	7	0
1889	103	3	7	0
1890	103	3	7	0
1891	103	-	8	1

## ILLINOIS.

*Illinois Institution for the Education of the Deaf and Dumb,*  
JACKSONVILLE, ILL.

DATE.	PUPILS.		TEACHERS.	
	Total.	Taught Speech.	Total.	Articulation.
1884	580	150	31	-
1885	584	150	31	-
1886	568	150	31	5
1887	564	170	32	5
1888	588	170	32	5
1889	560	217	33	6
1890	572	225	34	6
1891	595	275	35	8

## INDIANA.

*Indiana Oral School for the Deaf and Dumb of Children,*  
CHICAGO, ILL.

DATE.	TEACHERS.	
	Total.	Articulation.
1884	3	-
1885	5	-
1886	7	7
1887	6	5
1888	5	5
1889	5	5
1890	6	5
1891	8	8

## ILLINOIS.

*Ephpheta School for the Deaf,*  
CHICAGO, ILL.

DATE.	PUPILS.		TEACHERS.	
	Total.	Taught Speech.	Total.	Articulation.
1884				
1885				
1886				
1887	-	-	-	-
1888	47	23	4	1
1889	46	30	4	3
1890	58	58	4	3
1891	75	70	6	4

## INDIANA.

*Indiana Institution for the Education of the Deaf and Dumb,*  
INDIANAPOLIS, IND.

DATE.	PUPILS.		TEACHERS.	
	Total.	Taught Speech.	Total.	Articulation.
1884	374	45	18	-
1885	374	60	18	-
1886	372	58	20	1
1887	352	60	20	1
1888	347	40	19	1
1889	348	80	19	2
1890	355	84	17	1
1891	342	68	21	1



INDIANA.

<i>Evansville Public School for the Deaf,</i> EVANSVILLE, IND.				
DATE.	PUPILS.		TEACHERS.	
	Total.	Taught Speech.	Total.	Articulation.
1884				
1885				
1886	23	4	2	0
1887	25	0	2	0
1888	25	0	2	0
1889	24	0	2	0
1890	30	0	2	0
1891	28	-	2	0

IOWA.

<i>Iowa Institution for the Education of the Deaf and Dumb,</i> COUNCIL BLUFFS, IOWA.				
DATE.	PUPILS.		TEACHERS.	
	Total.	Taught Speech.	Total.	Articulation.
1884	290	-	19	-
1885	285	70	15	-
1886	292	42	15	-
1887	309	44	18	1
1888	309	44	18	1
1889	331	10	18	1
1890	309	25	18	2
1891	309	25	18	2

KENTUCKY.

<i>Kentucky Institute for Deaf-Mutes,</i> DANVILLE, KY.				
DATE.	PUPILS.		TEACHERS.	
	Total.	Taught Speech.	Total.	Articulation.
1884	152	17	11	-
1885	161	16	12	-
1886	190	18	12	1
1887	194	20	13	1
1888	179	12	13	1
1889	201	22	14	1
1890	218	23	14	1
1891	237	81	16	2

LOUISIANA.

<i>Louisiana School for the Deaf,</i> BATON ROUGE, LA.				
DATE.	PUPILS.		TEACHERS.	
	Total.	Taught Speech.	Total.	Articulation.
1884	43	-	4	-
1885	-	-	-	-
1886	-	-	-	-
1887	-	-	-	-
1888	-	-	-	-
1889	-	-	-	-
1890	79	14	5	1
1891	127	29	5	1

A.  
for the Educa-  
and Dumb,  
IOWA.

	TEACHERS.	
	Total.	Articu- lation.
-	19	-
0	15	-
2	15	-
4	18	1
4	18	1
0	18	1
5	18	2
5	18	2

IOWA.

*Eastern Iowa School for the Deaf,  
DUBUQUE, IOWA.*

DATE.	PUPILS.		TEACHERS.	
	Total.	Taught Speech.	Total.	Articu- lation.
1884				
1885				
1886				
1887				
1888				
1889	16	0	1	0
1890	15	0	1	0
1891	5	0	1	0

KANSAS.

*Kansas Institution for the Educa-  
tion of the Deaf and Dumb,  
OLATHE, KAN.*

DATE.	PUPILS.		TEACHERS.	
	Total.	Taught Speech.	Total.	Articu- lation.
1884	191	32	11	-
1885	223	50	14	-
1886	239	60	14	1
1887	235	70	17	2
1888	253	49	17	1
1889	266	55	17	1
1890	264	40	18	1
1891	270	54	18	1

MISSISSIPPI.

for the Deaf,  
MOBILE, LA.

	TEACHERS.	
	Total.	Articu- lation.
-	4	-
-	-	-
-	-	-
-	-	-
-	-	-
-	-	-
14	5	1
29	5	1

LOUISIANA.

*New Orleans Public School for  
Deaf-Mutes,  
NEW ORLEANS, LA.*

DATE.	PUPILS.		TEACHERS.	
	Total.	Taught Speech.	Total.	Articu- lation.
1884				
1885				
1886	16	0	1	0
1887	9	0	1	0
1888	10	0	1	0
1889	8	0	1	0
1890	8	0	1	0
1891				

LOUISIANA.

*Catholic Institution for the Deaf  
and Dumb,  
CHINCHUBA, MANDEVILLE, LA.*

DATE.	PUPILS.		TEACHERS.	
	Total.	Taught Speech.	Total.	Articu- lation.
1884				
1885				
1886				
1887				
1888				
1889				
1890				
1891	8	0	6	0

MAINE.

<i>Portland School for the Deaf,</i> PORTLAND, ME.				
DATE.	PUPILS.		TEACHERS.	
	Total.	Taught Speech.	Total.	Articulation.
1884	45	45	5	-
1885	46	46	5	-
1886	53	53	6	6
1887	53	53	6	6
1888	53	53	6	6
1889	50	50	6	6
1890	50	50	6	6
1891	51	51	6	6

MARYLAND.

<i>Maryland School for the Deaf,</i> FREDERICK, MD.				
DATE.	PUPILS.		TEACHERS.	
	Total.	Taught Speech.	Total.	Articulation.
1884	112	71	10	-
1885	110	70	10	-
1886	112	65	10	2
1887	114	67	10	2
1888	114	66	10	2
1889	105	55	10	2
1890	106	54	10	2
1891	107	54	10	2

MASSACHUSETTS.

<i>Clarke Institution for Deaf-Mutes,</i> NORTHAMPTON, MASS.				
DATE.	PUPILS.		TEACHERS.	
	Total.	Taught Speech.	Total.	Articulation.
1884	111	111	13	-
1885	106	106	13	-
1886	104	104	13	13
1887	108	108	14	14
1888	117	117	14	14
1889	123	123	14	14
1890	121	121	14	14
1891	128	128	14	14

MASSACHUSETTS.

<i>Horace Mann School,</i> BOSTON, MASS.				
DATE.	PUPILS.		TEACHERS.	
	Total.	Taught Speech.	Total.	Articulation.
1884	92	92	9	-
1885	91	91	9	-
1886	87	87	9	9
1887	87	87	9	9
1888	89	89	9	9
1889	97	97	10	10
1890	97	97	10	10
1891	103	103	11	11

LAND.

TEACHERS.		
Taught Speech.	Total.	Articulation.
71	10	-
70	10	-
65	10	2
67	10	2
66	10	2
55	10	2
54	10	2
54	10	2

MARYLAND.

*Maryland School for Colored Blind and Deaf,*  
BALTIMORE, MD.

DATE.	PUPILS.		TEACHERS.	
	Total.	Taught Speech.	Total.	Articulation.
1884	20	-	2	-
1885	19	-	2	-
1886	17	9	3	-
1887	-	-	-	-
1888	24	17	3	1
1889	23	0	2	0
1890	22	0	6	0
1891	18	-	4	0

MARYLAND.

*Mr. Knapp's Institute,*  
BALTIMORE, MD.

DATE.	PUPILS.		TEACHERS.	
	Total.	Taught Speech.	Total.	Articulation.
1884	-	-	-	-
1885	-	-	-	-
1836	-	-	-	-
1887	-	-	-	-
1888	28	28	4	4
1889	28	28	4	4
1890	-	-	-	-
1891	-	-	-	-

MASSACHUSETTS.

*Wann School,*  
MASS.

TEACHERS.		
Taught Speech.	Total.	Articulation.
92	9	-
91	9	-
87	9	9
87	9	9
89	9	9
97	10	10
97	10	10
103	11	11

MASSACHUSETTS.

*New England Industrial School for Deaf-Mutes,*  
BEVERLY, MASS.

DATE.	PUPILS.		TEACHERS.	
	Total.	Taught Speech.	Total.	Articulation.
1884	20	9	2	-
1885	21	13	2	-
1886	22	13	3	1
1887	24	16	2	1
1888	22	14	3	1
1889	32	20	3	1
1890	32	23	3	1
1891	28	20	2	1

MASSACHUSETTS.

*Sarah Fuller Home for Little Children who Cannot Hear,*  
WEST MEDFORD, MASS.

DATE.	PUPILS.		TEACHERS.	
	Total.	Taught Speech.	Total.	Articulation.
1884				
1885				
1886				
1887				
1888	12	12	1	1
1889	13	13	3	3
1890	11	11	4	1
1891	13	13	4	4

MICHIGAN.

<i>Michigan School for the Deaf,</i> FLINT, MICH.				
DATE.	PUPILS.		TEACHERS.	
	Total.	Taught Speech.	Total.	Articulation.
1884	310	41	16	-
1885	321	85	18	-
1886	334	61	18	1
1887	297	67		1
1888	333	70		1
1889	347	60	19	2
1890	338	50	18	1
1891	345	65	19	2

MICHIGAN.

<i>German Lutheran Deaf and Dumb Institute,</i> NORTH DETROIT, WAYNE Co., MICH.				
DATE.	PUPILS.		TEACHERS.	
	Total.	Taught Speech.	Total.	Articulation.
1884	40	40	3	-
1885	40	40	3	-
1886	36	36	3	3
1887	37	37	3	3
1888	39	39	3	3
1889	47	47	3	3
1890	44	44	3	3
1891	50	50	3	3

MISSISSIPPI.

<i>Mississippi Institution for the Education of the Deaf and Dumb,</i> JACKSON, Miss.				
DATE.	PUPILS.		TEACHERS.	
	Total.	Taught Speech.	Total.	Articulation.
1884	83	25	6	-
1885	100	30	6	-
1886	90	20	7	1
1887	91	25	7	1
1888	85	30	7	1
1889	90	24	7	1
1890	99	16	8	1
1891	93	15	7	1

MISSOURI.

<i>Missouri School for the Deaf and Dumb,</i> FULTON, Mo.				
DATE.	PUPILS.		TEACHERS.	
	Total.	Taught Speech.	Total.	Articulation.
1884	243	70	13	-
1885	261	60	13	-
1886	240	53	13	2
1887	259	64	13	2
1888	281	73	13	2
1889	297	63	16	2
1890	327	83	18	2
1891	336	80	18	2

IGAN.

School for the Deaf and Dumb Institute, WAYNE Co., MICH.			
PUPILS.	TEACHERS.		
	Taught Speech.	Total.	Articu- lation.
40	3	-	-
40	5	-	-
36	3	3	-
37	3	3	-
39	3	3	-
47	3	3	-
44	3	3	-
50	3	3	-

MINNESOTA.

Minnesota School for the Deaf, FARIBAULT, MINN.				
DATE.	PUPILS.		TEACHERS.	
	Total.	Taught Speech.	Total.	Articu- lation.
1884	148	33	10	-
1885	164	40	11	-
1886	157	40	9	1
1887	165	34	10	2
1888	174	68	10	2
1889	189	87	10	2
1890	231	65	11	2
1891	242	100	12	2

MINNESOTA.

St. Mary's Institute for Deaf-Mutes, ST. PAUL, MINN.				
DATE.	PUPILS.		TEACHERS.	
	Total.	Taught Speech.	Total.	Articu- lation.
1884	-	-	-	-
1885	-	-	-	-
1886	-	-	-	-
1887	-	-	-	-
1888	-	-	-	-
1889	37	37	2	2
1890	38	34	3	3
1891	47	40	4	4

MISSOURI.

School for the Deaf and Dumb, ST. LOUIS, MO.			
PUPILS.	TEACHERS.		
	Taught Speech.	Total.	Articu- lation.
70	13	-	-
60	13	-	-
53	13	2	-
64	13	2	-
73	13	2	-
63	16	2	-
83	18	2	-
80	18	2	-

MISSOURI.

St. Louis Day-School for the Deaf, ST. LOUIS, MO.				
DATE.	PUPILS.		TEACHERS.	
	Total.	Taught Speech.	Total.	Articu- lation.
1884	46	-	3	-
1885	45	-	3	-
1886	54	-	3	0
1887	53	-	3	0
1888	47	0	3	0
1889	42	-	2	0
1890	34	0	2	0
1891	42	35	3	1

MISSOURI.

St. Joseph's Deaf-Mute Institute, HANNIBAL, MO.				
DATE.	PUPILS.		TEACHERS.	
	Total.	Taught Speech.	Total.	Articu- lation.
1884	21	-	3	-
1885	22	9	1	-
1886	22	9	1	-
1887	-	-	-	-
1888	-	-	-	-
1889	-	-	-	-
1890	-	-	-	-
1891	-	-	-	-

MISSOURI.

*Miss Parker's School for the Deaf,*  
St. Louis, Mo.

DATE.	PUPILS.		TEACHERS.	
	Total.	Taught Speech.	Total.	Articulation.
1884				
1885				
1886				
1887				
1888				
1889				
1890	10	10	1	1
1891				

MISSOURI.

*Maria Consilia Deaf-Mute Institute,*  
St. Louis, Mo.

DATE.	PUPILS.		TEACHERS.	
	Total.	Taught Speech.	Total.	Articulation.
1884				
1885	-	-	-	-
1886	23	10	3	1
1887	26	3	3	1
1888	32	8	3	1
1889	30	11	3	1
1890	37	37	5	1
1891	45	36	4	3

NEW JERSEY.

*New Jersey School for the Deaf,*  
TRENTON, N.J.

DATE.	PUPILS.		TEACHERS.	
	Total.	Taught Speech.	Total.	Articulation.
1884	110	31	7	-
1885	119	22	7	-
1886	119	22	7	-
1887	117	33	7	2
1888	116	-	6	0
1889	117	37	8	2
1890	134	-	9	1
1891	138	45	9	4

NEW MEXICO.

*New Mexico School for the Deaf and Dumb,*  
SANTA FE, N.M.

DATE.	PUPILS.		TEACHERS.	
	Total.	Taught Speech.	Total.	Articulation.
1884				
1885	-	-	-	-
1886	5	0	1	0
1887	5	0	1	0
1888	8	0	1	0
1889	8	0	1	0
1890	9	0	1	0
1891	7	-	1	0

MOISSOURI.

<i>Deaf-Mute Institute,</i> ST. LOUIS, MO.			
DATE.	TEACHERS.		
	Total.	Articu- lation.	
1884	-	-	-
1885	3	1	
1886	3	1	
1887	3	1	
1888	3	1	
1889	3	1	
1890	5	1	
1891	4	3	

MISSOURI.

<i>Miss Kugler's School for the Deaf,</i> ST. LOUIS, MO.				
DATE.	PUPILS.		TEACHERS.	
	Total.	Taught Speech.	Total.	Articu- lation.
1884				
1885				
1886				
1887				
1888				
1889				
1890				
1891	5	5	1	1

NEBRASKA.

<i>Nebraska Institute for the Deaf and Dumb,</i> OMAHA, NEB.				
DATE.	PUPILS.		TEACHERS.	
	Total.	Taught Speech.	Total.	Articu- lation.
1884	129	27	8	-
1885	123	30	9	-
1886	118	26	8	2
1887	121	25	9	2
1888	139	48	9	2
1889	129	31	9	2
1890	142	47	10	4
1891	151	55	11	4

MEXICO.

<i>School for the Deaf and Dumb,</i> SANTO DOMINGO, N.M.			
DATE.	TEACHERS.		
	Total.	Articu- lation.	
1884	-	-	-
1885	0	1	0
1886	0	1	0
1887	0	1	0
1888	0	1	0
1889	0	1	0
1890	0	1	0
1891	1	0	0

NEW YORK.

<i>New York Institution for the In- struction of the Deaf and Dumb,</i> NEW YORK, N.Y.				
DATE.	PUPILS.		TEACHERS.	
	Total.	Taught Speech.	Total.	Articu- lation.
1884	419	-	16	-
1885	414	-	16	-
1886	413	-	15	-
1887	391	391	17	-
1888	377	377	18	8
1889	365	365	14	8
1890	350	350	15	8
1891	342	335	16	8

NEW YORK.

<i>Le Couvent St. Mary's Institution for the Improved Instruction of Deaf-Mutes,</i> BUFFALO, N.Y.				
DATE.	PUPILS.		TEACHERS.	
	Total.	Taught Speech.	Total.	Articu- lation.
1884	160	90	11	-
1885	150	100	11	-
1886	150	100	11	-
1887	158	100	12	4
1888	157	145	12	10
1889	164	150	12	10
1890	158	145	12	10
1891	141	136	12	11



## NEW YORK.

<i>Institution for the Improved Instruction of Deaf-Mutes, NEW YORK, N.Y.</i>				
DATE.	PUPILS.		TEACHERS.	
	Total.	Taught Speech.	Total.	Articulation.
1884	184	184	15	-
1885	182	182	15	-
1886	198	198	15	15
1887	194	194	15	15
1888	207	207	19	14
1889	213	213	15	15
1890	214	214	20	20
1891	223	223	21	21

## NEW YORK.

<i>St. Joseph's Institute for the Improved Instruction of Deaf-Mutes, FORDHAM, N.Y.</i>				
DATE.	PUPILS.		TEACHERS.	
	Total.	Taught Speech.	Total.	Articulation.
1884	262	262	20	-
1885	271	271	19	-
1886	271	271	19	-
1887	297	209	21	21
1888	314	314	20	19
1889	296	296	21	20
1890	311	311	21	20
1891	347	304	24	24

## NEW YORK.

<i>Northern New York Institution for Deaf-Mutes, MALONE, N.Y.</i>				
DATE.	PUPILS.		TEACHERS.	
	Total.	Taught Speech.	Total.	Articulation.
1884	25	4	3	-
1885	37	7	4	-
1886	56	13	5	1
1887	69	18	6	1
1888	74	20	6	1
1889	74	12	6	1
1890	89	18	6	1
1891	95	28	7	1

## NEW YORK.

<i>Miss Keeler's Articulation Class for Deaf-Mutes, NEW YORK, N.Y.</i>				
DATE.	PUPILS.		TEACHERS.	
	Total.	Taught Speech.	Total.	Articulation.
1884				
1885				
1886				
1887	-	-	-	-
1888	11	11	2	2
1889	12	12	2	2
1890	12	12	2	2
1891	11	11	2	2

**NEW YORK.**

<i>Institute for the Instruction of Deaf-Mutes, ALBANY, N.Y.</i>		
DATE.	TEACHERS.	
	Total.	Articulation.
1862	20	-
1871	19	-
1871	19	-
1890	21	21
1894	20	19
1896	21	20
1891	21	20
1904	24	24

**NEW YORK.**

<i>Central New York Institution for Deaf-Mutes, ROME, N.Y.</i>				
DATE.	PUPILS.		TEACHERS.	
	Total.	Taught Speech.	Total.	Articulation.
1884	166	-	12	-
1885	164	15	12	-
1886	170	18	12	1
1887	165	28	13	1
1888	170	20	12	1
1889	160	37	12	1
1890	156	156	10	4
1891	162	150	11	2

**NEW YORK.**

<i>Western New York Institution for Deaf-Mutes, ROCHESTER, N.Y.</i>				
DATE.	PUPILS.		TEACHERS.	
	Total.	Taught Speech.	Total.	Articulation.
1884	175	140	14	-
1885	179	179	14	-
1886	188	150	14	7
1887	190	156	20	8
1888	176	176	19	8
1889	166	166	19	5
1890	171	171	15	5
1891	167	167	15	5

**NEW YORK.**

<i>Articulation Class for Deaf-Mutes, ALBANY, N.Y.</i>		
DATE.	TEACHERS.	
	Total.	Articulation.
-	-	-
1891	2	2
1892	2	2
1892	2	2
1891	2	2

**NEW YORK.**

<i>Albany Home School for the Oral Instruction of the Deaf, ALBANY, N.Y.</i>				
DATE.	PUPILS.		TEACHERS.	
	Total.	Taught Speech.	Total.	Articulation.
1884				
1885				
1886				
1887				
1888				
1889	3	3	1	1
1890	7	7	2	2
1891	10	10	2	2

**NORTH CAROLINA.**

<i>North Carolina Institution for the Deaf and Dumb and the Blind, RALEIGH, N.C.</i>				
DATE.	PUPILS.		TEACHERS.	
	Total.	Taught Speech.	Total.	Articulation.
1884	114	-	10	-
1885	125	25	8	-
1886	125	25	8	-
1887	127	15	8	1
1888	137	12	8	1
1889	137	12	8	1
1890	132	14	8	1
1891	149	12	9	1

NORTH DAKOTA.

<i>School for the Deaf of North Dakota,</i> DEVIL'S LAKE, NO. DAK.				
DATE.	PUPILS.		TEACHERS.	
	Total.	Taught Speech.	Total.	Articulation.
1884				
1885				
1886				
1887				
1888				
1889				
1890	17	0	2	0
1891	86	8	3	1

OHIO.

<i>Ohio Institution for the Education of the Deaf and Dumb,</i> COLUMBUS, OHIO.				
DATE.	PUPILS.		TEACHERS.	
	Total.	Taught Speech.	Total.	Articulation.
1884	476	100	26	-
1885	458	80	26	-
1886	447	-	26	2
1887	470	100	24	2
1888	472	100	26	2
1889	495	120	27	3
1890	471	122	25	2
1891	451	125	26	2

OHIO.

<i>Toledo Deaf-Mute School,</i> TOLEDO, OHIO.				
DATE.	PUPILS.		TEACHERS.	
	Total.	Taught Speech.	Total.	Articulation.
1884				
1885				
1886				
1887				
1888				
1889				
1890	17	0	1	0
1891	17	-	1	0

OHIO.

<i>Cincinnati Catholic School for Deaf-Mutes,</i> CINCINNATI, OHIO.				
DATE.	PUPILS.		TEACHERS.	
	Total.	Taught Speech.	Total.	Articulation.
1884				
1885				
1886				
1887	-	-	-	-
1888	25	-	2	-
1889	20	-	2	-
1890	20	-	2	-
1891				

OHIO.

*for the Education  
of the Deaf and Dumb,  
CINCINNATI, OHIO.*

PUPILS.	TEACHERS.	
	Total.	Articu- lation.
100	26	-
80	26	-
-	26	2
100	24	2
100	26	2
120	27	3
122	25	2
125	26	2

OHIO.

*Cincinnati Public School for the  
Deaf,  
CINCINNATI, OHIO.*

DATE.	PUPILS.		TEACHERS.	
	Total.	Taught Speech.	Total.	Articu- lation.
1884	86	0	2	-
1885	86	0	2	-
1886	89	0	2	0
1887	85	0	2	0
1888	21	0	2	0
1889	13	0	1	0
1890	13	0	1	0
1891	11	-	1	0

OHIO.

*Cincinnati Oral School for the Deaf,  
CINCINNATI, OHIO.*

DATE.	PUPILS.		TEACHERS.	
	Total.	Taught Speech.	Total.	Articu- lation.
1884				
1885				
1886	7	7	2	2
1887	16	16	2	-
1888	18	18	2	2
1889	20	20	2	2
1890	20	20	3	2
1891	30	30	4	4

OHIO.

*Catholic School for  
Deaf-Mutes,  
CINCINNATI, OHIO.*

PUPILS.	TEACHERS.	
	Total.	Articu- lation.
-	-	-
-	2	-
-	2	-
-	2	-

OHIO.

*Notre Dame Female School for the  
Deaf,  
CINCINNATI, OHIO.*

DATE.	PUPILS.		TEACHERS.	
	Total.	Taught Speech.	Total.	Articu- lation.
1884				
1885				
1886				
1887				
1888				
1889				
1890				
1891	8	8	2	2

OREGON.

*Oregon School for Deaf-Mutes,  
SALEM, ORE.*

DATE.	PUPILS.		TEACHERS.	
	Total.	Taught Speech.	Total.	Articu- lation.
1884	29	0	3	-
1885	29	0	3	-
1886	28	3	3	0
1887	31	5	3	-
1888	31	9	3	1
1889	34	7	3	1
1890	30	10	4	1
1891	43	18	3	1

PENNSYLVANIA.

<i>Pennsylvania Institution for the Deaf and Dumb,</i> PHILADELPHIA, PENN.				
DATE.	PUPILS.		TEACHERS.	
	Total.	Taught Speech.	Total.	Articulation.
1884	447	172	33	-
1885	466	143	34	-
1886	502	155	36	14
1887	504	140	36	13
1888	494	120	37	13
1889	478	120	37	13
1890	494	118	37	13
1891	490	130	38	14

PENNSYLVANIA.

<i>Western Pennsylvania Institution for the Instruction of the Deaf and Dumb,</i> EDGEWOODVILLE, PENN.				
DATE.	PUPILS.		TEACHERS.	
	Total.	Taught Speech.	Total.	Articulation.
1884	124	17	8	-
1885	145	29	9	-
1886	174	27	11	1
1887	178	33	12	1
1888	180	33	11	1
1889	197	28	11	1
1890	194	39	12	1
1891	211	50	13	2

PENNSYLVANIA.

<i>Home for the Training in Speech of Deaf Children before they are of School Age.</i> PHILADELPHIA, PENN.				
DATE.	PUPILS.		TEACHERS.	
	Total.	Taught Speech.	Total.	Articulation.
1884				
1885				
1886				
1887				
1888				
1889				
1890				
1891	20	20	-	-

RHODE ISLAND.

<i>Rhode Island School for the Deaf,</i> PROVIDENCE, R.I.				
DATE.	PUPILS.		TEACHERS.	
	Total.	Taught Speech.	Total.	Articulation.
1884	29	29	3	-
1885	32	30	4	-
1886	32	32	4	4
1887	36	36	5	5
1888	33	33	5	5
1889	31	30	5	5
1890	41	41	5	5
1891	42	42	5	5

PENNSYLVANIA.

<i>Pennsylvania Institution for the Education of the Deaf and Dumb,</i> PHILADELPHIA, PENN.			
DATE.	TEACHERS.		Articulation.
	Total.	Articulation.	
1887	8	-	-
1889	9	-	-
1897	11	1	1
1903	12	1	1
1903	11	1	1
1908	11	1	1
1910	12	1	1
1910	13	2	2

PENNSYLVANIA.

<i>Pennsylvania Oral School for the Deaf,</i> SCRANTON, PENN.				
DATE.	PUPILS.		TEACHERS.	
	Total.	Taught Speech.	Total.	Articulation.
1884	20	20	2	-
1885	18	18	1	-
1886	18	18	1	1
1887	24	24	2	2
1888	36	36	3	3
1889	42	42	4	4
1890	53	53	5	5
1891	53	53	5	5

PENNSYLVANIA.

<i>Miss Mary Garrett's School for Deaf Children,</i> PHILADELPHIA, PENN.				
DATE.	PUPILS.		TEACHERS.	
	Total.	Taught Speech.	Total.	Articulation.
1884	8	8	1	-
1885	12	12	2	2
1886	16	16	2	2
1887	15	15	2	2
1888				
1889				
1890				
1891				

ISLAND.

<i>School for the Deaf,</i> PROVIDENCE, R.I.			
DATE.	TEACHERS.		Articulation.
	Total.	Articulation.	
1829	3	-	-
1830	4	-	-
1832	4	4	4
1836	5	5	5
1833	5	5	5
1830	5	5	5
1841	5	5	5
1842	5	5	5

SOUTH CAROLINA.

<i>South Carolina Institution for the Education of the Deaf and Dumb and the Blind,</i> CEDAR SPRING, S.C.				
DATE.	PUPILS.		TEACHERS.	
	Total.	Taught Speech.	Total.	Articulation.
1884	59	11	5	-
1885	67	13	4	-
1886	74	15	4	1
1887	72	25	5	2
1888	81	28	5	2
1889	74	23	6	2
1890	81	20	7	2
1891	91	26	7	2

SOUTH DAKOTA.

<i>Dakota School for Deaf-Mutes,</i> SIOUX FALLS, So. DAK.				
DATE.	PUPILS.		TEACHERS.	
	Total.	Taught Speech.	Total.	Articulation.
1884	33	0	2	-
1885	36	0	2	-
1886	40	4	3	-
1887	45	14	5	1
1888	44	13	5	2
1889	51	16	5	1
1890	51	16	5	1
1891	47	18	4	1

TENNESSEE.

<i>Tennessee Deaf and Dumb School,</i> KNOXVILLE, TENN.				
DATE.	PUPILS.		TEACHERS.	
	Total.	Taught Speech.	Total.	Articu- lation.
1884	153	15	7	-
1885	148	13	8	-
1886	150	10	8	1
1887	151	11	8	1
1888	164	13	8	1
1889	187	16	9	1
1890	191	20	9	1
1891	188	110	9	1

TEXAS.

<i>Texas Deaf and Dumb Asylum,</i> AUSTIN, TEX.				
DATE.	PUPILS.		TEACHERS.	
	Total.	Taught Speech.	Total.	Articu- lation.
1884	129	25	10	-
1885	146	33	9	-
1886	148	25	10	1
1887	158	34	10	1
1888	174	34	12	1
1889	195	39	11	1
1890	212	49	13	1
1891	229	50	13	1

VIRGINIA.

<i>Virginia Institution for the Edu- cation of the Deaf and Dumb and of the Blind,</i> STAUNTON, VA.				
DATE.	PUPILS.		TEACHERS.	
	Total.	Taught Speech.	Total.	Articu- lation.
1884	97	49	12	-
1885	98	36	11	-
1886	96	42	12	1
1887	96	25	12	1
1888	102	35	11	1
1889	106	25	10	1
1890	113	25	11	1
1891	113	25	11	1

WASHINGTON.

<i>Washington School for Defective Youth,</i> VANCOUVER, WASH.				
DATE.	PUPILS.		TEACHERS.	
	Total.	Taught Speech.	Total.	Articu- lation.
1884				
1885	9	0	2	-
1886	20	6	3	1
1887	22	7	3	1
1888	25	7	3	1
1889	32	8	3	1
1890	33	9	3	2
1891	55	15	4	2

AS.

<i>Dumb Asylum,</i> TEX.			
	TEACHERS.		
	Total.	Articu- lation.	
1883	10	-	
1884	9	-	
1885	10	1	
1886	10	1	
1887	12	1	
1888	11	1	
1889	13	1	
1890	13	1	

TEXAS.

<i>Deaf, Dumb, and Blind Institution for Colored Youths,</i> AUSTIN, TEX.				
DATE.	PUPILS.		TEACHERS.	
	Total.	Taught Speech.	Total.	Articu- lation.
1884				
1885				
1886				
1887				
1888	28	5	3	1
1889	35	-	3	-
1890	40	5	3	1
1891	39	5	3	0

UTAH.

<i>Utah School for the Deaf.</i> SALT LAKE CITY, UTAH.				
DATE.	PUPILS.		TEACHERS.	
	Total.	Taught Speech.	Total.	Articu- lation.
1884	-	-	-	-
1885	20	0	1	-
1886	20	0	2	0
1887	20	0	2	0
1888	35	0	2	0
1889	38	4	3	1
1890	43	0	3	0
1891	48	-	4	1

INGTON.

<i>School for Defective Youth,</i> BR, WASH.			
	TEACHERS.		
	Total.	Articu- lation.	
1883	2	-	
1884	3	1	
1885	3	1	
1886	3	1	
1887	3	1	
1888	3	1	
1889	3	2	
1890	4	2	

WEST VIRGINIA.

<i>West Virginia School for the Deaf and the Blind,</i> ROMNEY, W. VA.				
DATE.	PUPILS.		TEACHERS.	
	Total.	Taught Speech.	Total.	Articu- lation.
1884	75	0	5	-
1885	76	22	6	-
1886	79	23	6	1
1887	68	-	6	1
1888	62	25	6	1
1889	82	39	6	1
1890	88	48	6	1
1891	91	50	7	1

WISCONSIN.

<i>Wisconsin School for the Deaf,</i> DELAVAN, WIS.				
DATE.	PUPILS.		TEACHERS.	
	Total.	Taught Speech.	Total.	Articu- lation.
1884	242	48	14	-
1885	231	61	14	-
1886	236	45	14	3
1887	249	48	15	3
1888	259	48	15	3
1889	226	44	15	3
1890	223	43	15	3
1891	210	45	16	3



WISCONSIN.

*Milwaukee Day School for the Deaf,*  
MILWAUKEE, WIS.

DATE.	PUPILS.		TEACHERS.	
	Total.	Taught Speech.	Total.	Articulation.
1884	11	11	2	-
1885	25	25	3	-
1886	35	35	4	3
1887	37	37	6	6
1888	43	43	5	5
1889	44	44	6	6
1890	49	49	6	5
1891	39	39	6	6

WISCONSIN.

*La Crosse Oral School for the Deaf,*  
LA CROSSE, WIS.

DATE.	PUPILS.		TEACHERS.	
	Total.	Taught Speech.	Total.	Articulation.
1884				
1885				
1886				
1887				
1888	5	5	1	1
1889	7	7	1	1
1890	8	8	1	1
1891	9	9	1	1

WISCONSIN.

*St. John's Cathol' Deaf-Mute Institute,*  
ST. FRANCIS, WIS.

DATE.	PUPILS.		TEACHERS.	
	Total.	Taught Speech.	Total.	Articulation.
1884	45	-	3	-
1885	45	9	3	-
1886	27	10	3	1
1887	21	8	3	2
1888	28	10	3	2
1889	27	13	3	2
1890	29	19	4	2
1891	38	23	4	2

BRITISH COLUMBIA.

*British Columbia School for Deaf-Mutes,*  
VICTORIA, B.C., CANADA.

DATE.	PUPILS.		TEACHERS.	
	Total.	Taught Speech.	Total.	Articulation.
1884				
1885				
1886				
1887				
1888	6	4	1	0
1889				
1890				
1891				

WISCONSIN.

<i>Wausau Day School for the Deaf,</i> WAUSAU, Wis.			
DATE.	TEACHERS.		
	Total.	Articu- lation.	
1884			
1885			
1886			
1887			
1888			
1889			
1890			
1891			

WISCONSIN.

<i>Wausau Day School for the Deaf,</i> WAUSAU, Wis.				
DATE.	PUPILS.		TEACHERS.	
	Total.	Taught Speech.	Total.	Articu- lation.
1884				
1885				
1886				
1887				
1888				
1889				
1890	8	8	1	1
1891	6	6	1	1

WISCONSIN.

<i>Frentz School for the Deaf,</i> OSHKOSH, Wis.				
DATE.	PUPILS.		TEACHERS.	
	Total.	Taught Speech.	Total.	Articu- lation.
1884				
1885				
1886				
1887				
1888	7	0	1	0
1889				
1890				
1891				

COLUMBIA.

<i>Columbia School for Mutes,</i> C.C., CANADA.			
DATE.	TEACHERS.		
	Total.	Articu- lation.	
1884			
1885			
1886			
1887			
1888			
1889			
1890			
1891			

MANITOBA.

<i>Manitoba Institution for the Edu- cation of the Deaf,</i> WINNIPEG, MANITOBA, CANADA.				
DATE.	PUPILS.		TEACHERS.	
	Total.	Taught Speech.	Total.	Articu- lation.
1884				
1885				
1886				
1887				
1888	10	4	1	1
1889	19	-	1	0
1890	30	3	3	1
1891	39	5	4	1

NEW BRUNSWICK.

<i>New Brunswick Deaf and Dumb Institution,</i> PORTLAND, N.B., CANADA.				
DATE.	PUPILS.		TEACHERS.	
	Total.	Taught Speech.	Total.	Articu- lation.
1884	32	0	2	-
1885	-	-	-	-
1886	-	-	-	-
1887	-	-	-	-
1888	-	-	-	-
1889	-	-	-	-
1890				
1891				

NEW BRUNSWICK.

*Fredericton Institution for the Education of the Deaf and Dumb,*  
FREDERICTON, N.B., CANADA.

DATE.	PUPILS.		TEACHERS.	
	Total.	Taught Speech.	Total.	Articulation.
1884	20	2	2	-
1885	17	-	2	-
1886	-	-	-	-
1887	-	-	-	-
1888	24	5	3	-
1889	-	-	-	-
1890	23	2	3	0
1891	27	2	4	0

NOVA SCOTIA.

*Halifax Institution for the Deaf and Dumb,*  
HALIFAX, N.S., CANADA.

DATE.	PUPILS.		TEACHERS.	
	Total.	Taught Speech.	Total.	Articulation.
1884	73	13	4	-
1885	74	10	5	-
1886	78	10	5	-
1887	75	-	5	0
1888	72	15	5	1
1889	72	23	5	2
1890	74	31	6	1
1891	72	27	6	1

PROVINCE OF QUEBEC.

*Catholic Female Deaf-Mute Institution,*  
MONTREAL, P.Q., CANADA.

DATE.	PUPILS.		TEACHERS.	
	Total.	Taught Speech.	Total.	Articulation.
1884	165	59	35	-
1885	185	60	35	-
1886	230	78	44	12
1887	228	75	39	10
1888	209	66	44	10
1889	209	66	44	10
1890	165	78	36	15
1891	196	72	38	15

PROVINCE OF QUEBEC.

*Mackay Institution for Protestant Deaf-Mutes and the Blind,*  
MONTREAL, P.Q., CANADA.

DATE.	PUPILS.		TEACHERS.	
	Total.	Taught Speech.	Total.	Articulation.
1884	45	8	4	-
1885	45	12	4	-
1886	46	14	4	2
1887	50	18	4	2
1888	46	-	4	2
1889	40	16	4	2
1890	48	25	5	3
1891	50	20	5	3

SCOTIA.

*Institution for the Deaf and Dumb,*  
S., CANADA.

	TEACHERS.	
	Total.	Articulation.
13	4	-
10	5	-
10	5	-
-	5	0
15	5	1
23	5	2
31	6	1
27	6	1

ONTARIO.

*Ontario Institution for the Deaf and Dumb,*  
BELLEVILLE, ONT., CANADA.

DATE.	PUPILS.		TEACHERS.	
	Total.	Taught Speech.	Total.	Articulation.
1884	286	32	15	-
1885	284	33	15	-
1886	273	37	15	1
1887	264	39	15	1
1888	265	38	15	1
1889	274	40	15	1
1890	291	42	16	1
1891	296	43	15	1

PROVINCE OF QUEBEC.

*Catholic Male Deaf and Dumb Institution for the Province of Quebec,*  
MONTREAL, P.Q., CANADA.

DATE.	PUPILS.		TEACHERS.	
	Total.	Taught Speech.	Total.	Articulation.
1884	126	50	25	-
1885	117	30	27	-
1886	105	36	28	5
1887	107	40	28	5
1888	103	26	33	5
1889	112	40	32	5
1890	120	59	30	28
1891	113	60	30	7

PROVINCE OF QUEBEC.

*Institution for Protestant and the Blind,*  
P.Q., CANADA.

	TEACHERS.	
	Total.	Articulation.
8	4	-
12	4	-
14	4	2
18	4	2
-	4	2
16	4	2
25	5	3
20	5	3



