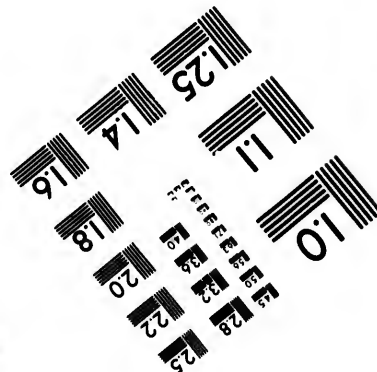
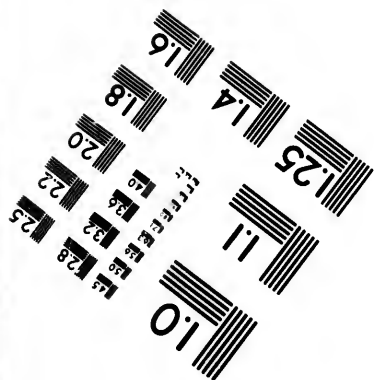
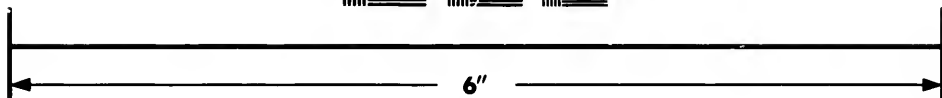


Resolution Test Chart Labels:

- 1.0
- 1.1
- 1.25
- 1.4
- 1.6
- 1.8
- 2.0
- 2.2
- 2.5
- 2.8
- 3.2
- 3.6
- 4.0



Photographic Sciences Corporation

**23 WEST MAIN STREET
WEBSTER, N.Y. 14580
(716) 872-4503**

**CIHM/ICMH
Microfiche
Series.**

**CIHM/ICMH
Collection de
microfiches.**



Canadian Institute for Historical Microreproductions / Institut canadien de microreproductions historiques

© 1983

Technical and Bibliographic Notes/Notes techniques et bibliographiques

The Institute has attempted to obtain the best original copy available for filming. Features of this copy which may be bibliographically unique, which may alter any of the images in the reproduction, or which may significantly change the usual method of filming, are checked below.

- ☐ Coloured covers/
Couverture de couleur
- ☐ Covers damaged/
Couverture endommagée
- ☐ Covers restored and/or laminated/
Couverture restaurée et/ou pelliculée
- ☐ Cover title missing/
Le titre de couverture manque
- ☐ Coloured maps/
Cartes géographiques en couleur
- ☐ Coloured ink (i.e. other than blue or black)/
Encre de couleur (i.e. autre que bleue ou noire)
- ☐ Coloured plates and/or illustrations/
Planches et/ou illustrations en couleur
- ☐ Bound with other material/
Relié avec d'autres documents
- ☐ Tight binding may cause shadows or distortion along interior margin/
La reliure serrée peut causer de l'ombre ou de la distortion le long de la marge intérieure
- ☐ Blank leaves added during restoration may appear within the text. Whenever possible, these have been omitted from filming/
Il se peut que certaines pages blanches ajoutées lors d'une restauration apparaissent dans le texte, mais, lorsque cela était possible, ces pages n'ont pas été filmées.
- ☐ Additional comments:/
Commentaires supplémentaires:

L'Institut a microfilmé le meilleur exemplaire qu'il lui a été possible de se procurer. Les détails de cet exemplaire qui sont peut-être uniques du point de vue bibliographique, qui peuvent modifier une image reproduite, ou qui peuvent exiger une modification dans la méthode normale de filmage sont indiqués ci-dessous.

- ☐ Coloured pages/
Pages de couleur
- ☐ Pages damaged/
Pages endommagées
- ☐ Pages restored and/or laminated/
Pages restaurées et/ou pelliculées
- ☒ Pages discoloured, stained or foxed/
Pages décolorées, tachetées ou piquées
- ☐ Pages detached/
Pages détachées
- ☒ Showthrough/
Transparence
- ☐ Quality of print varies/
Qualité inégale de l'impression
- ☐ Includes supplementary material/
Comprend du matériel supplémentaire
- ☐ Only edition available/
Seule édition disponible
- ☐ Pages wholly or partially obscured by errata slips, tissues, etc., have been refilmed to ensure the best possible image/
Les pages totalement ou partiellement obscurcies par un feuillet d'errata, une pelure, etc., ont été filmées à nouveau de façon à obtenir la meilleure image possible.

This item is filmed at the reduction ratio checked below/
Ce document est filmé au taux de réduction indiqué ci-dessous.

10X	12X	14X	16X	18X	20X	22X	24X	26X	28X	30X	32X
								<input checked="" type="checkbox"/>			

The copy filmed here has been reproduced thanks to the generosity of:

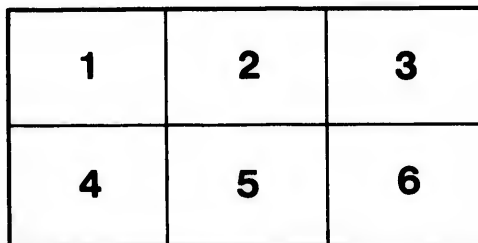
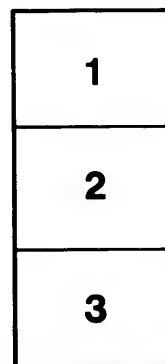
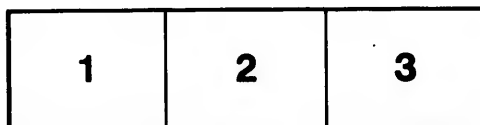
Library of the Public
Archives of Canada

The images appearing here are the best quality possible considering the condition and legibility of the original copy and in keeping with the filming contract specifications.

Original copies in printed paper covers are filmed beginning with the front cover and ending on the last page with a printed or illustrated impression, or the back cover when appropriate. All other original copies are filmed beginning on the first page with a printed or illustrated impression, and ending on the last page with a printed or illustrated impression.

The last recorded frame on each microfiche shall contain the symbol ➡ (meaning "CONTINUED"), or the symbol ▼ (meaning "END"), whichever applies.

Maps, plates, charts, etc., may be filmed at different reduction ratios. Those too large to be entirely included in one exposure are filmed beginning in the upper left hand corner, left to right and top to bottom, as many frames as required. The following diagrams illustrate the method:



L'exemplaire filmé fut reproduit grâce à la générosité de:

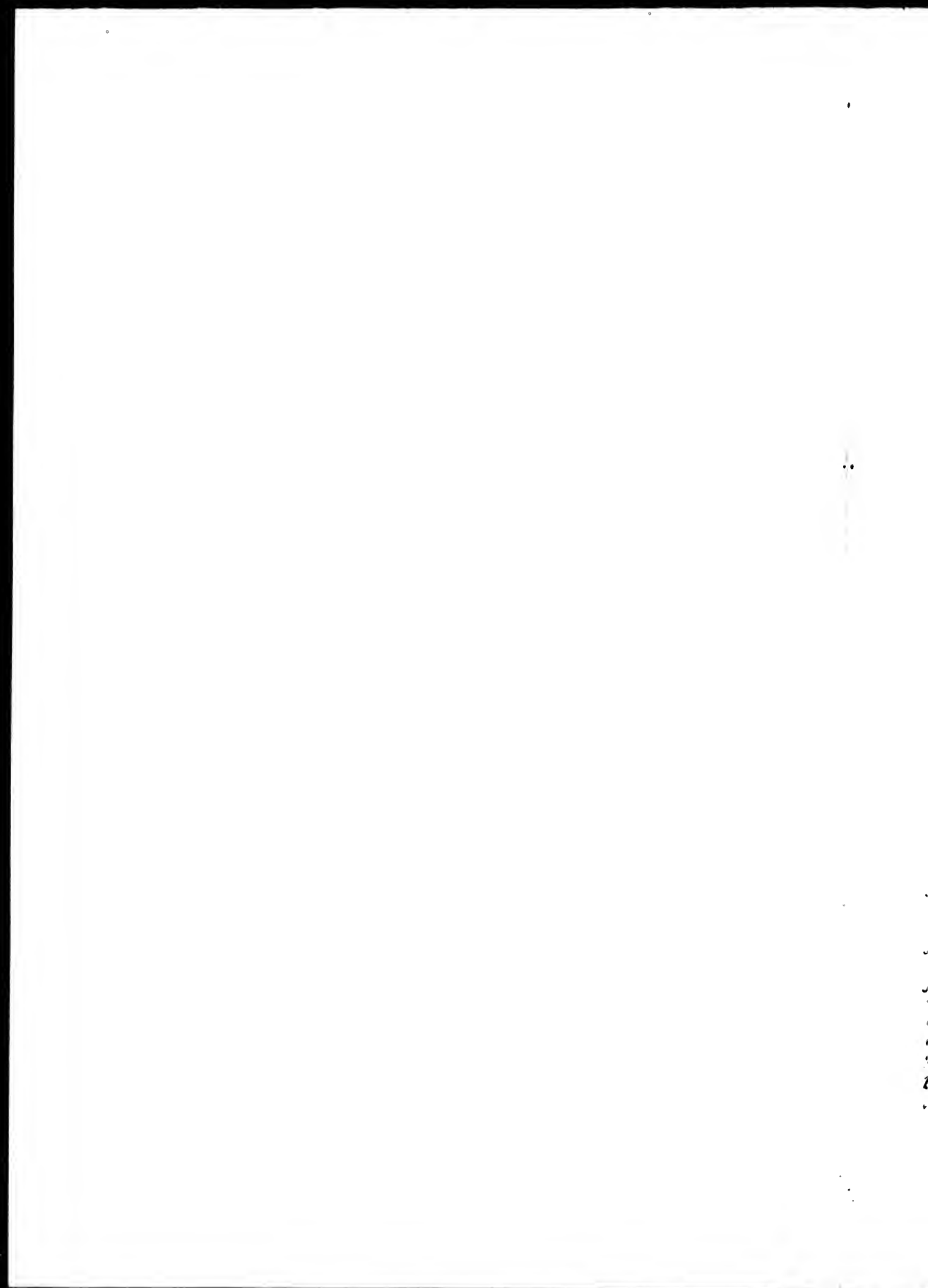
La bibliothèque des Archives
publiques du Canada

Les images suivantes ont été reproduites avec le plus grand soin, compte tenu de la condition et de la netteté de l'exemplaire filmé, et en conformité avec les conditions du contrat de filmage.

Les exemplaires originaux dont la couverture en papier est imprimée sont filmés en commençant par le premier plat et en terminant soit par la dernière page qui comporte une empreinte d'impression ou d'illustration, soit par le second plat, selon le cas. Tous les autres exemplaires originaux sont filmés en commençant par la première page qui comporte une empreinte d'impression ou d'illustration et en terminant par la dernière page qui comporte une telle empreinte.

Un des symboles suivants apparaîtra sur la dernière image de chaque microfiche, selon le cas: le symbole ➡ signifie "A SUIVRE", le symbole ▼ signifie "FIN".

Les cartes, planches, tableaux, etc., peuvent être filmés à des taux de réduction différents. Lorsque le document est trop grand pour être reproduit en un seul cliché, il est filmé à partir de l'angle supérieur gauche, de gauche à droite, et de haut en bas, en prenant le nombre d'images nécessaire. Les diagrammes suivants illustrent la méthode.



To Mr. *Wm^o 2781*

Deputy Provincial Surveyor

SIR,

HIS Excellency ALURED CLARKE, Esq. Lieutenant Governor and Commander in Chief of His Majesty's Province of Lower Canada, having in consequence of a Petition preferred by

issued a Warrant of survey bearing date the _____ Day of _____
requiring the Out Lines of _____ Town-
ship by the Name of _____

marked out, situate as described in the said Warrant, a Copy of which is herunto annexed for your direction and guidance :—

You are hereby directed and required to survey and mark the Out-lines of the said Township, making the same to contain as nearly _____ as the Subdivisions prescribed in the said Warrant*, and the Boundaries therein specified, or

** You will observe that the quantity nearest to the contents of ten miles square, which will admit of the subdivisions prescribed in the warrant, will be 61,600 acres, with the usual allowance of five acres on every one hundred acres for high ways; and that this quantity will be contained in a tract of ten miles and five chains in length, and ten miles three chains and fifty-five links in perpendicular breadth, or such other length and breadth as shall be equivalent thereto.—A rectangular township of these dimensions will contain eleven concessions or ranges of lots, each lot being 73 chains and 5 links in length, and each range will contain 28 lots of 28 chains and 75 links each in breadth; so that each township will contain 308 lots of 200 acres each with the allowance for highways; of which said lots 220 will be grantable to settlers, and the remaining 88 lots reserved.—In like manner you will observe that the quantity nearest to the contents of nine miles front by twelve miles depth, which will admit of the subdivisions prescribed in the warrant, will be 67,200 acres with the allowance for highways; which will be contained in a tract of nine miles and eight chains in front, and twelve miles nine chains and sixty links in perpendicular depth on a mean, or such other front and depth as shall be equivalent thereto.—A rectangular township of these dimensions will contain twelve concessions or ranges of lots, each lot being 80 chains and 80 links in length, and each range will contain 28 lots of twenty-six chains each in breadth; so that each township of these dimensions will contain 336 lots of 200 acres each with the allowance for highways; of which said lots 240 will be grantable to settlers and the remaining 96 lots reserved, which are to be laid out in such parts of the said township as shall on the return of the survey be judged most advisable.—The proportion between the length and breadth of each lot will not indeed agree exactly with that prescribed in the warrant; but it will be as nearly so as the dimensions and subdivisions therein prescribed will admit.*

the

the Boundaries of the other Tracts thereunto adjoining shall permit.—In the Performance of which you are to govern yourself by the following Instructions.—viz.

I.—In order to avoid all Disputes that might hereafter arise from the Line being insufficiently marked, you are to mark the same in the most conspicuous manner, blazing the Trees on each side thereof with Three Blazes, *to wit*, one Blaze on each side in the direction of the Line, and one Blaze on that side by which the Line shall pass.—And in order to avoid such Errors as might arise from your Needle being drawn aside by attractive matter, you are carefully to attend to the making of back Observations on your Line whereby to correct any deviations that may at anytime take place, and for this purpose you are to cut away such trees and underwood as shall obstruct your view, and may with facility be removed.† But as unnecessary delays are to be carefully avoided, and a strict attention paid to œconomy, you are to be particularly careful not to lose time by cutting away any other trees or underwood than shall be absolutely necessary for enabling you to perform your survey in an accurate and workmanlike manner; and where this can be done by cutting a block out of a tree which shall obstruct your view, instead of cutting the same down, you are to take that method which shall be the shortest, observing to mark all the trees which you shall leave standing in your line with two blazes one above another, on each side thereof, in the direction of the line.

You are likewise to fix posts of cedar (or other the most durable wood that may be at hand) at the end of every mile measured on your line, marking the number of miles thereon to serve as a guide to the future Surveyor who may be employed in laying out the said Township into Lots or Farms. And at the several corners of the said Township you are to erect a square post of cedar or other durable wood, marking the name of the Township thereon, and also the names of the adjoining Townships where any have have been named, together with the date of the year when surveyed; and place a heap of stones round the same, if stones shall be at hand; blazing all the trees in the vicinity likewise to make the place the more conspicuous.

II. As the errors which take place in surveying are often occasioned by bad chaining, you are to be particularly careful in the choice, and constantly attentive to the conduct, of your chain-bearers; whom you are likewise to cause to be sworn for the faithful discharge of their duty previous to the commencement of your work. You will also be careful in directing them to carry their chain as level as possible in going up and down hills: the hindmost man holding up his end of the chain perpendicularly over the stick in going up hills, and the foremost man holding up his end of the chain in going down hills, and placing the stick where it shall first strike the ground on being dropped perpendicularly from the extremity of the chain, to the end that the horizontal distance may be always noted in your field-book; and in cases where the hills shall be too steep for the chain to be held level at its full length, you are to direct the chain-men to measure with the *one half* thereof, putting a stick at every second measure of those half-lengths.

III. You

the
uc-

ine
pi-
es,
ize
Er-
er,
ine
his
uct
ays
are
s or
orm
be
in-
be
ing
the

ood
urk-
yor
ms.
are
ship
have
and
zing
spi-

l by
ant-
wife
the
hem
the
stick
in in
ound
o the
ook ;
held
with
half-

You

(112)

III. You are to keep an account in your field-book of the courses and distances (in *English chains and links*) of your several lines;—The quality of the soil you pass over, and the several sorts of timber growing thereon;—Whether any or what part thereof shall be fit for the cultivation of hemp or flax; or what other productions you shall judge it most proper for;—as also the several rivers, brooks, and streams fit for mills; stone quarries, minerals, and (in short) all other observations that may tend to the public utility and benefit: noting in your field-book the breadth of the several rivers and streams, and the course they run, as well as the distances measured on the line, at which such rivers or streams were crossed, or at which such quarries, minerals, &c. were found.—You are likewise to note each day of the month in your field-book, to the end that the work of each day may be distinguished; and to make the whole of your entries with such care and accuracy as shall enable you to answer any questions relative thereto on oath, if the same should be required;—an attested copy of which field-book you are to deliver into this office, together with a plan of the said township laid down from a scale of forty chains in an inch, designating the hills, swamps, rivers, and streams that you shall have observed; distinguishing those streams that are fifty links wide and upwards by a double line, and those of a smaller size by a single line, together likewise with an arrow to shew which way the said streams run.

IV. It being required (as you will observe from the copy of the warrant hereunto annexed) that the Petitioners should make provision for exempting the Crown from more than one half of the expences of the said survey, you are therefore, previous to any expences being incurred, to make such agreement for this purpose with the Petitioners or some person on their behalf (with respect to their furnishing axe-men, money, or provisions for the party) as shall be to your and their mutual satisfaction;—The other half of the said expences (in which you are always to use as great a degree of economy as the good of the service you are employed in will admit) will be paid you by this office; but as your accounts will be subject to audit, they must be accompanied with an affidavit of their being just and true, and with vouchers to support the several articles of charge.

And of what you shall do herein you are to make due return to this office within _____ months from the date hereof, to the end that a regular return may be made on the said warrant within the time therein prescribed.

Given under my hand at the Surveyor General's Office in the City
of Quebec this _____ Day of
A. D. 179 —

