



MUNICIPAL
Gazette
 MUNICIPALE
 DE - OF
Montreal

Cinquième année No 2
 Fifth year

10 Février 1908
 February

Les abonnements sont reçus chez
Le Trésorier de la Ville de Montreal,
 Hôtel de Ville

Les autres communications doivent
 être adressées au directeur de
"LA GAZETTE MUNICIPALE"
 Hôtel de Ville

Forward subscriptions to
The City Treasurer of Montreal
 City Hall

All other communications should be
 addressed to the managing-editor of
"The Municipal Gazette"

City Hall

TELEPHONE: MAIN 4240

Paraît le lundi matin
 Published every Monday
 morning

Abonnements \$2 par an
 Subscriptions \$2 a year

Payables d'avance
 Payable in advance

Organe officiel de la Corporation
 de la Ville de Montréal

Official organ of the Corporation
 of the City of Montreal

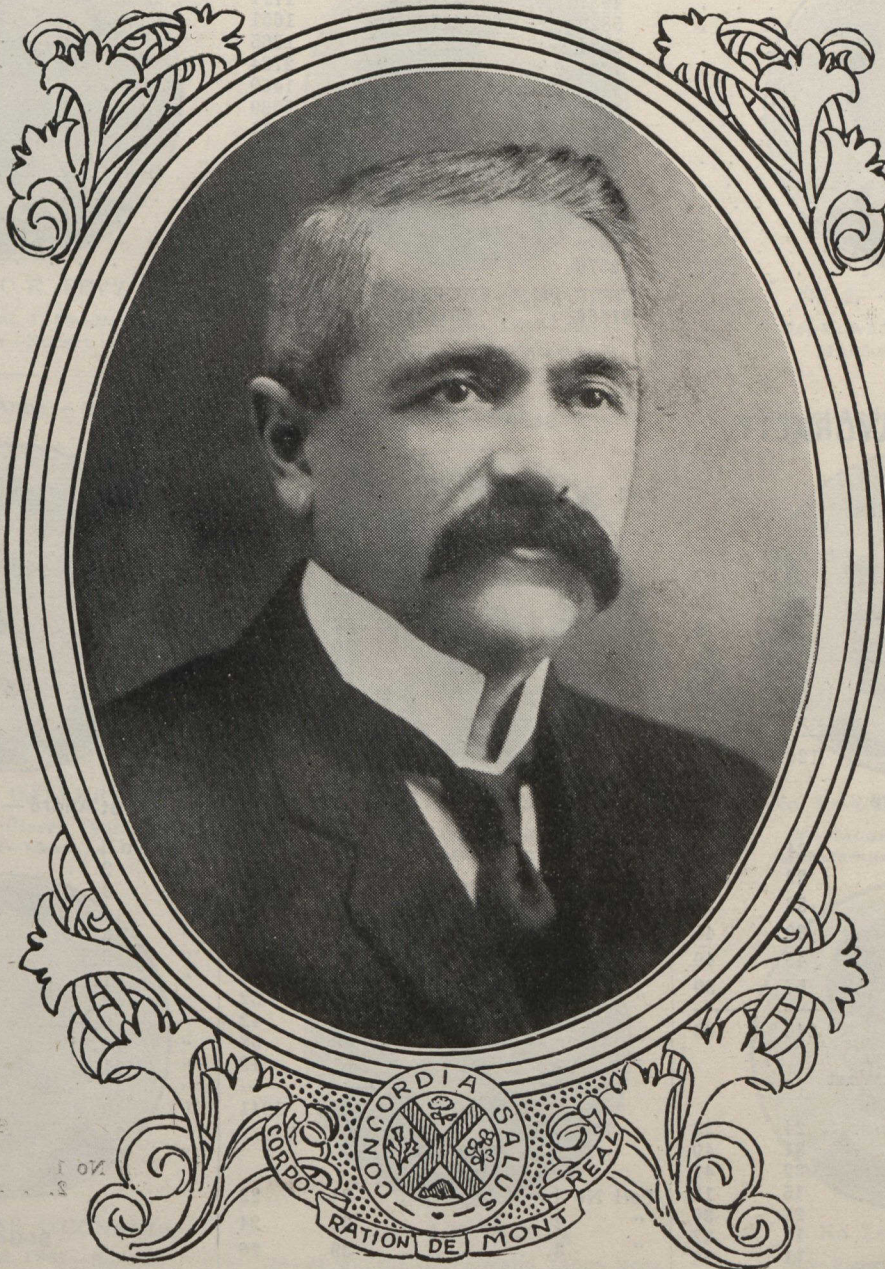
CANADA

LE PRÉSIDENT DU CONSEIL MUNICIPAL



THE PRESIDENT OF CITY COUNCIL

1908



1910



Né—Montreal 1854—Born



SON HONNEUR
 HIS WORSHIP

LOUIS PAYETTE

MAIRE
 MAYOR



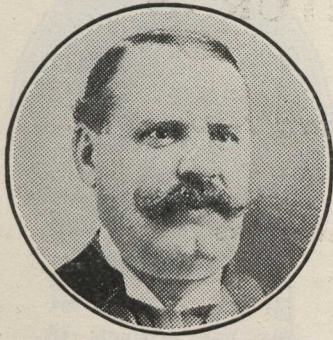
Entrepreneur — Contractor

Les Echevins du Conseil de 1908-10 — Aldermen of the Council for 1908-10

Est — East

Centre

Ouest — West



No 1.—L.-A. LAPOINTE
Né—Contreccœur (Verchères), 1860—Born
Courtier d'Immeubles—Real Estate Agent



No 1.—W.-E. MOUNT
Né—Montréal, 1869—Born
Avocat—Advocate



No 1.—ALEX.-D. FRASER
Né—Mount-Millick (Kildare, Ir.), 1852—Born
Marchand—Merchant



No 2.—J.-C.-E. LEVY
Né—Montréal, 1855—Born
Notaire—Notary



No 2.—HONORE MERCIER
Né—St-Hyacinthe, 1875—Born
Avocat—Advocate

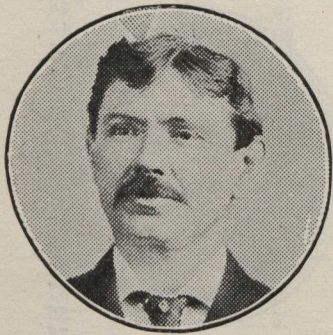


No 2.—S.-J. CARTER
Né—Cowansville, 1856—Born
Marchand—Merchant

Sainte-Anne — St. Ann

Saint-Joseph

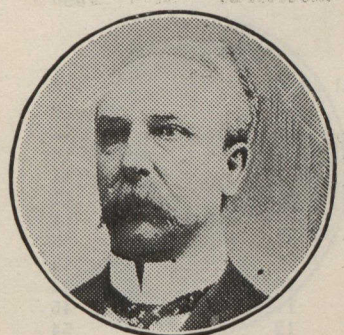
Saint-André — St. Andrew



No 1.—D. GALLERY
Né—Shierdooley (Clare), 1859—Born
Marchand—Merchant



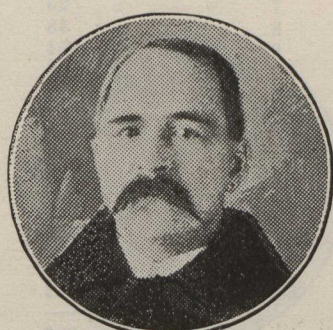
No 1.—J.-B.-A. MARTIN
Né—Ste-Geneviève (Montréal), 1850—Born
Bourgeois—Gentleman



No 1.—GEO.-W. SADLER
Né—Montréal, 1852—Born
Manufacturier—Manufacturer



No 2.—THOMAS O'CONNELL
Né—Montréal, 1867—Born
Entrepreneur—Contractor



No 2.—J.-H. NAULT
Né—St-Maurice (Champlain), 1860—Born
Pharmacien—Druggist



No 2.—J. WARD
Né—Richelieu, 1851—Born
Marchand—Merchant

	Payette	Roy
Poll No 3.	11	8
" 4.	24	16
" 5.	18	19
" 6.	8	27
" 7.	7	14
" 8.	15	18
" 9.	13	23
" 10.	13	15
" 11.	8	22
" 12.	15	14
" 13.	31	30
" 14.	16	19
" 15.	17	13
" 16.	11	17
" 17.	14	19
	<u>260</u>	<u>326</u>

St Laurent — St. Lawrence

	Payette	Roy
Poll No 1.	19	20
" 2.	28	34
" 3.	29	23
" 4.	32	40
" 5.	17	28
" 6.	17	31
" 7.	25	17
" 8.	31	27
" 9.	21	30
" 10.	26	24
" 11.	29	30
" 12.	24	21
" 13.	24	29
" 14.	32	32
" 15.	23	37
" 16.	21	25
" 17.	25	36
" 18.	22	34
" 19.	11	29
" 20.	26	21
" 21.	17	33
" 22.	20	19
" 23.	31	30
	<u>550</u>	<u>650</u>

St-Louis

	Payette	Roy
Poll No 1.	26	26
" 2.	20	13
" 3.	32	48
" 4.	16	24
" 5.	34	30
" 6.	41	23
" 7.	44	38
" 8.	28	16
" 9.	27	25
" 10.	42	39
" 11.	45	40
" 12.	54	43
" 13.	36	26
" 14.	38	22
" 15.	53	34
" 16.	41	42
" 17.	42	26
" 18.	18	20
" 19.	25	37
" 20.	38	31
" 21.	43	31
" 22.	44	29
" 23.	33	31
" 24.	41	36
" 25.	31	33
" 26.	19	19
" 27.	31	28
" 28.	27	16
" 29.	30	26
" 30.	45	28
	<u>1044</u>	<u>880</u>

St-Jacques — St. James

	Payette	Roy
Poll No 1.	42	16
" 2.	35	20

	Payette	Roy
Poll No 3.	23	19
" 4.	37	26
" 5.	42	26
" 6.	25	21
" 7.	46	26
" 8.	41	24
" 9.	24	37
" 10.	41	21
" 11.	34	12
" 12.	44	20
" 13.	24	14
" 14.	31	15
" 15.	28	13
	<u>520</u>	<u>316</u>

Papineau

	Payette	Roy
Poll No 1.	40	24
" 2.	22	36
" 3.	31	21
" 4.	22	20
" 5.	13	31
" 6.	30	15
" 7.	25	23
" 8.	23	29
" 9.	29	33
" 10.	24	22
" 11.	30	38
" 12.	38	27
" 13.	43	32
" 14.	22	20
" 15.	24	23
" 16.	25	20
" 17.	42	24
" 18.	21	58
" 19.	31	21
" 20.	6	22
" 21.	40	29
" 22.	21	34
" 23.	18	38
" 24.	39	27
" 25.	20	39
" 26.	24	55
" 27.	11	15
" 28.	17	27
" 29.	29	44
" 30.	27	4
" 31.	23	13
" 32.	22	13
" 33.	20	31
" 34.	23	43
" 35.	22	23
	<u>903</u>	<u>1012</u>

Ste Marie — St. Mary

	Payette	Roy
Poll No 1.	51	23
" 2.	76	32
" 3.	49	27
" 4.	13	18
" 5.	72	20
" 6.	33	10
" 7.	25	12
" 8.	48	12
" 9.	54	13
" 10.	39	20
" 11.	19	18
" 12.	48	19
" 13.	57	15
" 14.	70	16
" 15.	71	9
" 16.	49	11
" 17.	55	19
" 18.	37	2
" 19.	5	9
" 19a.	12	1
	<u>886</u>	<u>306</u>

La Fontaine

	Payette	Roy
Poll No 1.	30	23
" 2.	39	35

	Payette	Roy
Poll No 3.	45	36
" 4.	35	15
" 5.	31	24
" 6.	47	18
" 7.	27	27
" 8.	43	17
" 9.	43	19
" 10.	27	28
" 11.	33	29
" 12.	27	24
" 13.	33	18
" 14.	33	18
" 15.	36	33
" 16.	49	24
" 17.	41	19
" 18.	28	13
" 19.	24	19
" 20.	20	18
" 21.	19	13
" 22.	33	33
" 23.	19	13
" 24.	27	31
	<u>789</u>	<u>547</u>

St-Jean-Baptiste

	Payette	Roy
Poll No 1.	44	75
" 2.	44	55
" 3.	96	54
" 4.	49	43
" 5.	76	60
" 6.	77	44
" 7.	69	47
" 8.	39	34
" 9.	71	56
" 10.	76	50
" 11.	55	32
" 12.	56	18
" 13.	44	39
" 14.	47	34
" 15.	56	26
" 16.	80	33
" 17.	61	38
" 18.	82	51
" 19.	48	29
" 20.	43	30
" 21.	56	49
" 22.	54	47
" 23.	50	24
	<u>1373</u>	<u>963</u>

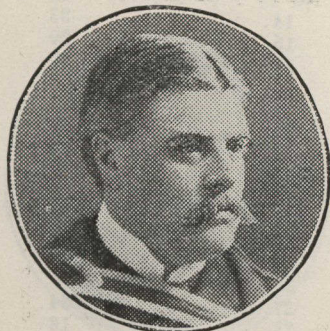
St Gabriel

	Payette	Roy
Poll N 1.	66	20
" 2.	73	17
" 3.	20	17
" 4.	37	24
" 5.	36	18
" 6.	37	18
" 7.	29	21
" 8.	20	21
" 9.	29	24
" 10.	38	17
" 11.	38	13
" 12.	24	18
" 13.	20	19
" 14.	23	28
" 15.	17	23
" 16.	16	27
" 17.	10	31
" 18.	16	36
" 19.	10	26
" 20.	12	16
" 21.	17	40
" 22.	11	31
	<u>599</u>	<u>505</u>

Hochelaga

	Payette	Roy
Poll No 1.	33	32
" 2.	47	30
" 3.	60	52

Saint-Georges



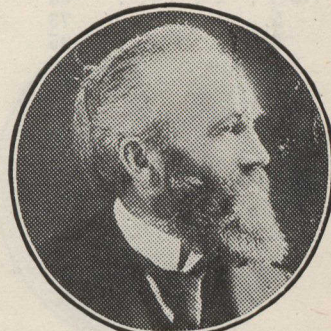
No 1.—H.B. YATES
Né—Montréal, 1865—Born
Médecin—Physician

Saint-Louis



No 1.—J.-BTE LAMOUREUX
Né—Contrecoeur (Verchères), 1863—Born
Maître-boucher—Master butcher

Saint-Laurent — St. Lawrence



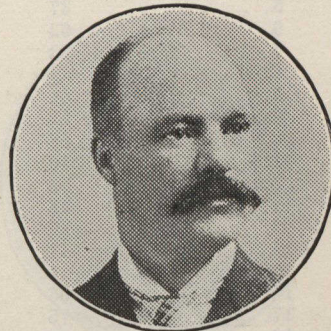
No 1.—J.B. CLEARIHUE
Né—Québec, 1849—Born
Bourgeois—Gentleman



No 2.—I.H. STEARNS
Né—New-Hampshire (U. S. A), 1837—Born
Bourgeois—Gentleman



No 2.—J.-P. GADBOIS
Né—St-Urbain (Châteauguay), 1868—Born
Médecin—Physician



No 2.—JAS. ROBINSON
Né—Montréal, 1856—Born
Marchand—Merchant

Papineau



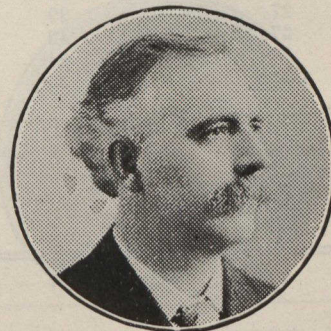
No 1.—M. MARTIN
Né—Montréal, 1869—Born
Manufacturier—Manufacturer

Sainte-Marie — St. Mary

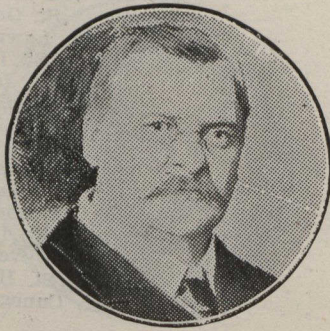


No 1.—E.F. LARIVIERE
Né—St-Bruno (Chambly), 1862—Born
Marchand—Merchant

Saint-Jacques — St. James



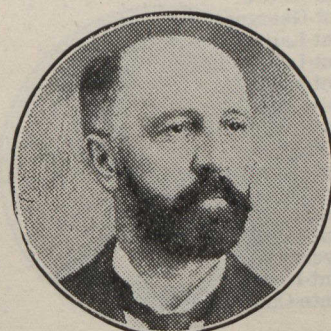
No 1.—N. GIROUX
Né—Montréal, 1863—Born
Libraire—Stationer



No 2.—I. LAVIOLETTE
Né—Lavaltrie (Berthier), 1860—Born
Médecin—Physician



No 2.—N. SEGUIN
Né—Rigaud (Vaudreuil), 1867—Born
Epicier—Grocer



No 2.—C. ROBILLARD
Né—Lavaltrie (Berthier), 1850—Born
Manufacturier—Manufacturer

	Payette	Roy
Poll No 4	53	46
" 5	73	68
" 6	35	46
" 7	35	36
" 8	75	72
" 9	55	57
" 10	45	43
" 11	49	27
" 12	33	47
" 13	46	35
" 14	49	44
" 15	37	36
	<hr/>	<hr/>
St-Denis	725	671

	Payette	Roy
Poll No 29	50	27
" 30	25	31
" 31	54	34
" 32	31	29
" 32a	44	19
" 33	17	6
" 33a	41	42
" 33b	9	9
" 34	37	26
" 35	38	33
" 36	47	39
	<hr/>	<hr/>
Duvernay	1896	1246

	Payette	Roy
Poll No 13	41	5
" 14	33	18
" 15	20	9
" 16	30	20
" 17	30	20
" 18	35	28
" 19	24	17
" 20	30	20
" 21	50	11
" 22	30	16
" 23	39	22
" 24	35	20
" 25	32	23
" 26	30	11
" 27	34	15
" 28	16	9
" 29	42	23
" 30	54	7
" 31	27	10
" 32	27	8
" 33	24	10
" 34	43	16
" 35	40	10
" 36	29	21
" 37	35	11
" 38	17	9
" 39	42	6
	<hr/>	<hr/>
Ste-Cunégonde	1204	565

Poll No 1	26	15
" 2	36	24
" 3	41	38
" 4	61	34
" 5	37	18
" 6	62	33
" 7	33	50
" 8	53	42
" 9	41	29
" 9a	52	26
" 10	56	35
" 11	40	31
" 12	74	36
" 13	48	22
" 14	37	41
" 15	41	14
" 15a	41	22
" 16	55	17
" 17	75	35
" 18	65	27
" 19	35	32
" 20	44	25
" 21	45	29
" 22	25	20
" 22a	20	15
" 23	61	31
" 24	46	31
" 25	59	44
" 26	25	23
" 27	39	29
" 27a	42	25
" 28	54	27
" 28a	34	31

Poll No 1	60	49
" 2	47	22
" 3	57	53
" 4	31	27
" 5	60	32
" 6	55	41
" 7	34	30
" 8	69	29
" 9	61	60
" 10	57	61
" 11	60	50
" 12	32	28
" 13	38	46
" 14	44	36
" 15	47	40
	<hr/>	<hr/>
St-Henri	752	604

Poll No 1	16	13
" 2	18	15
" 3	27	25
" 4	13	9
" 5	37	22
" 6	30	10
" 7	29	18
" 8	27	5
" 9	31	13
" 10	21	8
" 11	30	7
" 12	36	25
	<hr/>	<hr/>
St-Henri	544	262

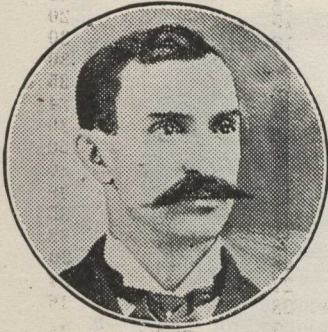
Poll No 1	28	22
" 2	11	14
" 3	39	20
" 4	29	10
" 5	41	11
" 6	13	24
" 7	36	13
" 8	40	17
" 9	12	10
" 10	42	9
" 11	35	10
" 12	38	16
" 13	34	18
" 14	34	20
" 15	37	14
" 16	31	20
" 17	44	14
	<hr/>	<hr/>
St-Henri	544	262

MAIRIE.—MAYORALTY.

RECAPITULATION.

QUARTIERS.	PAYETTE	ROY	WARDS.
Est.	120	166 East
Centre.	246	192 Centre
Ouest.	141	208 West
Sainte-Anne.	858	1241 St. Ann
Saint-Joseph.	858	639 St. Joseph
Saint-André.	442	610 St. Andrew
Saint-Georges.	260	326 St. George
Saint-Laurent.	550	650 St. Lawrence
Saint-Louis.	1,044	880 St. Louis
Saint-Jacques.	520	316 St. James
Papineau	903	1,012 Papineau
Sainte-Marie.	886	306 St. Mary
La Fontaine.	789	547 La Fontaine
Saint-Jean-Baptiste.	1,373	968 St. Jean Baptiste
Saint-Gabriel.	599	505 St. Gabriel
Hochelaga.	725	671 Hochelaga
Saint-Denis.	1,896	1,246 St. Denis
Duvernay.	752	604 Duvernay
Saint-Henri.	1,204	565 St. Henry
Sainte-Cunégonde.	544	262 St. Cunegonde
	<hr/>	<hr/>	
	14,710	11,914	
Majorité pour Payette	2,796		Payette's majority.

La Fontaine



No 1.—J.-D. COUTURE

Né—Ste-Thérèse (Terreb.), 1860—Born
Agent Manufacturier—Manufacturers' Agent

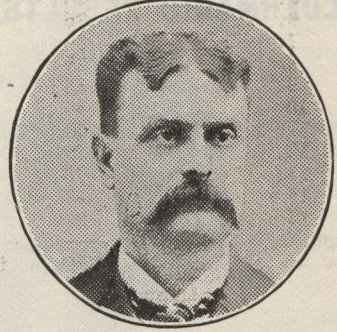
Hochelaga



No 1.—JOHN BUMBRAY

Né—Hochelaga, 1849—Born
Entrepreneur—Contractor

Saint-Jean-Baptiste



No 1.—NOE LECLAIRE

Né—St-Jérôme (Terrebonne), 1860—Born
Entrepreneur—Contractor



No 2.—L.-A. LAVALLEE

Né—Berthier, 1861—Born
Avocat, C. R. —Advocate, K.C.



No 2.—J.-P. MARIN

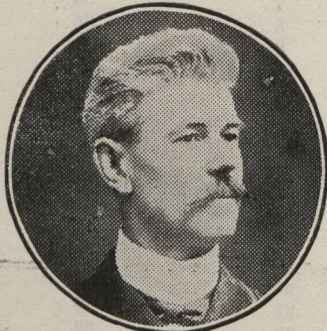
Né—St-Pie (Bagot), 1864—Born
Médecin—Physician



W.-J. PROULX

Né—Ste-Geneviève (Laval), 1866—Born
Notaire—Notary

Duvernay



No 1.—E. MAJOR

Né—St-Vincent de Paul, 1869—Born
Constructeur—Builder

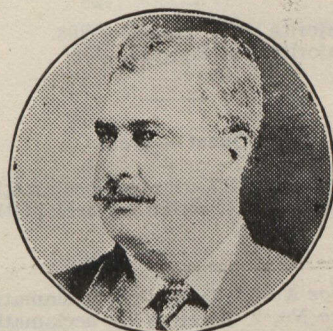
Saint-Gabriel



No 1.—E.-G. DAGENAIS

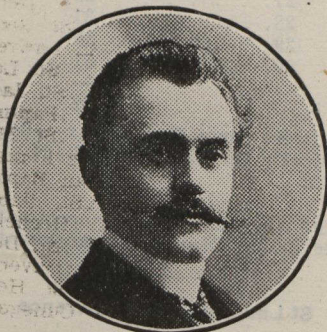
Né—Ste-Rose (Laval), 1868—Born
Médecin—Physician

Saint-Denis



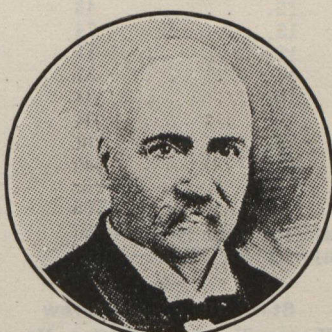
No 1.—J.-J.-E. LESPERANCE

Né—Montréal, 1867—Born
Entrepreneur—Contractor



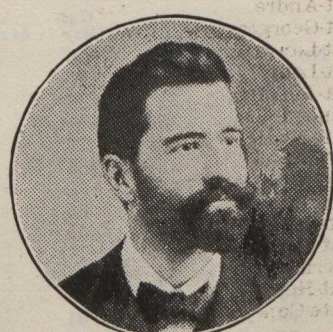
No 2.—V. LEVESQUE

Né—Montréal, 1876—Born
Pharmacien—Druggist



No 2.—R. TURNER

Né—Québec, 1835—Born
Epicier—Grocer



No 2.—J.-G. DUQUETTE

Né—Lachine, 1868—Born
Entrepreneur—Contractor

ECHÉVINAGE ALDERMANIC RESULTS.

Est — East

Charge No 1. Election par acclamation.
Office No. 1. Election by acclamation.

Charge No 2. Election par acclamation.
Office No. 2. Election by acclamation.

Centre

Charge No 1. — Office No. 1.

	Mount	Rainville
Poll No 1	46	28
" 2	62	30
" 3	61	39
" 4	72	67
" 5	68	38
" 6	68	63
	<hr/>	<hr/>
	377	265

Majorité pour Mount—112.
Majority for Mount—112.

Charge No 2. — Office No. 2.

	Mercier	St-Denis
Poll No 1	55	19
" 2	65	25
" 3	58	41
" 4	99	42
" 5	68	40
" 6	81	51
	<hr/>	<hr/>
	426	218

Majorité pour Mercier—208.
Majority for Mercier—208.

Ouest — West

Charge No 1. Election par acclamation.
Office No. 1. Election by acclamation.

Charge No 2. Election par acclamation.
Office No. 2. Election by acclamation.

Ste-Anne — St. Ann

Charge No 1. — Office No. 1

	Carroll	Gallery	McMahon
Poll No 1	27	68	9
" 2	23	51	4
" 3	21	80	5
" 4	35	61	0
" 5	36	70	0
" 6	32	61	1
" 7	17	92	1
" 8	17	55	2
" 9	24	49	3
" 10	21	77	5
" 11	42	81	6
" 12	30	48	1
" 13	26	61	0
" 14	56	41	6
" 15	37	35	6
" 16	51	42	12
" 17	33	43	6
" 18	22	53	8

	Carroll	Gallery	McMahon
Poll No 19	30	57	8
" 20	17	32	10
" 21	26	32	4
" 22	14	29	5
" 23	26	32	4
" 24	15	33	1
" 25	27	35	2
" 26	41	43	1
" 27	43	27	1
	<hr/>	<hr/>	<hr/>
	789	1388	111

Majorité pour Gallery—599.
Majority for Gallery—599.

Dépôt forfait: McMahon.
Deposit forfeited: McMahon.

Charge No 2. Election par acclamation.
Office No. 2. Election by acclamation.

St-Joseph

Charge No 1. — Office No. 1

	Foisy	Martin
Poll No 1	20	45
" 2	35	50
" 3	19	51
" 4	36	36
" 5	14	61
" 6	30	73
" 7	38	66
" 8	33	27
" 9	28	27
" 10	33	72
" 11	39	69
" 12	28	43
" 13	38	63
" 14	30	61
" 15	53	68
" 16	30	62
" 17	29	65
" 18	16	57
" 19	37	44
	<hr/>	<hr/>
	586	1040

Majorité pour Martin—454.
Majority for Martin—454.

Charge No 2. — Office No. 2.

	Malone	Nault
Poll No 1	43	23
" 2	40	42
" 3	48	23
" 4	34	37
" 5	25	57
" 6	24	82
" 7	25	81
" 8	40	21
" 9	34	25
" 10	29	77
" 11	27	83
" 12	43	29
" 13	74	32
" 14	71	50
" 15	71	55
" 16	53	39
" 17	33	61
" 18	41	33
" 19	55	27
	<hr/>	<hr/>
	776	877

Majorité pour Nault—101.
Majority for Nault—101.

St-André — St. Andrew

Charge No 1. — Office No. 1

	Gilday	Sadler
Poll No 1	60	44
" 2	47	47
" 3	44	61

	Gilday	Sadler
Poll No 4	43	31
" 5	31	18
" 6	37	11
" 7	36	45
" 8	31	36
" 9	46	64
" 10	33	40
" 11	47	34
" 12	41	48
" 13	42	46
" 14	27	23
" 15	30	56

Majorité pour Sadler—9.

Majority for Sadler—9.

Charge No 2. Election par acclamation.
Office No. 2. Election by acclamation.

St-Georges

Charge No 1. Election par acclamation.
Office No. 1. Election by acclamation.

Charge No 2. Election par acclamation.
Office No. 2. Election by acclamation.

St-Louis

Charge No 1. — Office No. 1

	Lamoureux	St-Louis
Poll No 1	36	25
" 2	28	21
" 3	63	25
" 4	26	16
" 5	47	22
" 6	51	27
" 7	54	34
" 8	26	20
" 9	43	16
" 10	66	24
" 11	70	26
" 12	90	21
" 13	46	19
" 14	51	16
" 15	63	35
" 16	44	39
" 17	44	31
" 18	23	24
" 19	29	36
" 20	31	56
" 21	29	50
" 22	33	48
" 23	37	33
" 24	44	36
" 25	40	30
" 26	30	11
" 27	38	26
" 28	31	20
" 29	38	22
" 30	51	29
	<hr/>	<hr/>
	1302	838

Majorité pour Lamoureux—464.
Majority for Lamoureux—464.

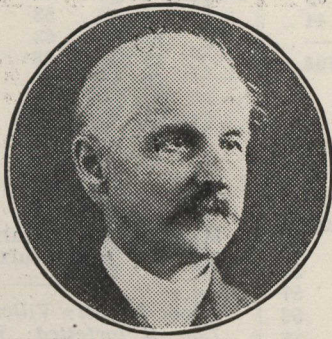
Charge No 2. Election par acclamation.
Office No. 2. Election by acclamation.

St-Laurent — St. Lawrence

Charge No 1. — Office No. 1

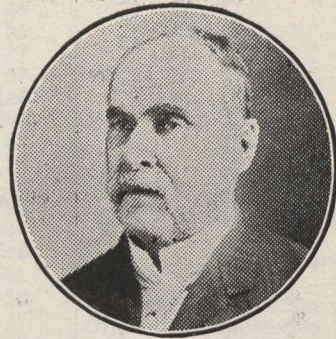
	Clearihue	Lucas
Poll No 1	45	31
" 2	65	10

Saint-Henri — St. Henry

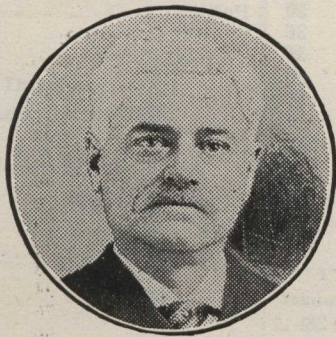


No 1.—E. GUAY
Né—St-Joseph (Lévis), 1852—Born
Manufacturier—Manufacturer

Sainte-Cunégonde



No 1.—J. ROY
Né—St-Isidore (Laprairie), 1844—Born
Entrepreneur—Contractor



No 2.—O. DAVID
Né—St-Vincent de Paul, 1848—Born
Marchand—Merchant



No 2.—N.-A. LAPOINTE
Né—St-Michel (Bellechasse), 1839—Born
Commerçant—Merchant

	Clearihue	Lucas
Poll No 3.	44	21
" 4.	66	11
" 5.	41	13
" 6.	43	13
" 7.	43	7
" 8.	53	12
" 9.	61	4
" 10.	52	2
" 11.	65	7
" 12.	51	7
" 13.	48	13
" 14.	66	5
" 15.	55	6
" 16.	49	3
" 17.	60	5
" 18.	47	13
" 19.	39	4
" 20.	48	2
" 21.	56	5
" 22.	37	6
" 23.	62	3
	1196	203

Majorité pour Clearihue—993.
Majority for Clearihue—993.

Dépôt forfait: Lucas.
Deposit forfeited: Lucas.

Charge No 2. Election par acclamation.
Office No. 2. Election by acclamation.

Papineau

Charge No 1. Election par acclamation.
Office No. 1. Election by acclamation.

Charge No 2. Election par acclamation.
Office No. 2. Election by acclamation.

Ste-Marie — St. Mary

Charge No 1. Election par acclamation.
Office No. 1. Election by acclamation.

Charge No 2. Election par acclamation.
Office No. 2. Election by acclamation.

St-Jacques — St. James

Charge No 1. Election par acclamation.
Office No. 1. Election by acclamation.

Charge No 2. Election par acclamation.
Office No. 2. Election by acclamation.

La Fontaine

Charge No 1. Election par acclamation.
Office No. 1. Election by acclamation.

Charge No 2. Election par acclamation.
Office No. 2. Election by acclamation.

Hochelaga

Charge No 1. — Office No. 1

	Bumbray	Moreau
Poll No 1.	57	16
" 2.	54	33
" 3.	69	53
" 4.	46	59
" 5.	66	86
" 6.	56	21
" 7.	43	36
" 8.	75	77
" 9.	58	57
" 10.	46	44
" 11.	33	51
" 12.	64	29

	Bumbray	Moreau
Poll No 13.	38	46
" 14.	43	52
" 15.	30	44
	778	704

Majorité pour Bumbray—74.
Majority for Bumbray—74.

Charge No 2. — Office No. 2.

	Chartier	Marin
Poll No 1.	41	32
" 2.	54	32
" 3.	62	57
" 4.	48	56
" 5.	65	86
" 6.	36	43
" 7.	31	45
" 8.	42	110
" 9.	56	54
" 10.	30	60
" 11.	33	50
" 12.	56	36
" 13.	29	55
" 14.	40	56
" 15.	27	47
	650	819

Majorité pour Marin—169.
Majority for Marin—169.

St-Jean-Baptiste

Charge No 1. — Office No. 1

	Leclaire	Quimet
Poll No 1.	90	28
" 2.	63	39
" 3.	79	69
" 4.	54	42
" 5.	75	63
" 6.	76	51
" 7.	64	51
" 8.	41	37
" 9.	77	58
" 10.	76	59
" 11.	52	37
" 12.	52	23
" 13.	51	37
" 14.	61	23
" 15.	64	23
" 16.	93	30
" 17.	75	38
" 18.	99	42
" 19.	68	17
" 20.	51	26
" 21.	72	40
" 22.	86	25
" 23.	51	30
	1570	888

Majorité pour Leclaire—682.
Majority for Leclaire—682.

Charge No 2. — Office No. 2.

	Proulx	Vande-lac	Ville-neuve
Poll No 1.	34	29	63
" 2.	27	18	62
" 3.	72	54	27
" 4.	39	35	22
" 5.	68	45	31
" 6.	53	58	15
" 7.	53	52	15
" 8.	23	45	8
" 9.	50	70	17
" 10.	49	71	15
" 11.	37	45	9
" 12.	44	20	15
" 13.	41	38	9
" 14.	31	41	13
" 15.	53	27	8

	Proulx	Vande-lac	Ville-neuve
Poll No 16.	54	54	16
" 17.	53	43	19
" 18.	63	49	32
" 19.	38	35	15
" 20.	36	29	14
" 21.	47	46	21
" 22.	60	37	16
" 23.	40	25	16
	1065	966	484

Majorité pour Proulx—99.
Majority for Proulx—99.

Dépôt forfait: Villeneuve.
Deposit forfeited: Villeneuve.

Duvernay

Charge No 1. — Office No. 1

	Major	Vallières
Poll No 1.	92	30
" 2.	66	23
" 3.	62	63
" 4.	40	24
" 5.	70	31
" 6.	79	30
" 7.	42	27
" 8.	88	19
" 9.	94	35
" 10.	76	44
" 11.	90	25
" 12.	41	21
" 13.	57	27
" 14.	63	20
" 15.	69	24
	1029	443

Majorité pour Major—586.
Majority for Major—586.

Dépôt forfait: Vallières.
Deposit forfeited: Vallières.

Charge No 2. Election par acclamation.
Office No. 2. Election by acclamation.

St Gabriel

Charge No 1. Election par acclamation.
Office No. 1. Election by acclamation.

Charge No 2. Election par acclamation.
Office No. 2. Election by acclamation.

St-Denis

Charge No 1. — Office No. 1

	Houlé	Lespérance.
Poll No 1.	19	26
" 2.	29	47
" 3.	59	28
" 4.	34	64
" 5.	20	51
" 6.	22	77
" 7.	29	60
" 8.	26	79
" 9.	26	46
" 9a.	25	56
" 10.	38	62
" 11.	19	53
" 12.	43	70
" 13.	26	45
" 14.	13	73
" 15.	35	27
" 15a.	28	38
" 16.	44	28
" 17.	57	58
" 18.	66	41

Houlé Lespérance		Duquette Lalonde		Duquette Lalonde	
Poll No 19	30 31	Poll No 3	31 56	Poll No 32a	64 4
" 20	41 30	" 4	62 32	" 33	14 9
" 21	57 28	" 5	43 28	" 33a	59 21
" 22	23 24	" 6	60 34	" 33b	15 3
" 22a	13 27	" 7	54 37	" 34	25 47
" 23	42 52	" 8	74 29	" 35	45 29
" 24	47 34	" 9	48 24	" 36	44 43
" 25	64 44	" 9a	51 31		
" 26	16 32	" 10	46 53		
" 27	36 39	" 11	56 17		
" 27a	29 40	" 12	73 40		
" 28	37 45	" 13	46 26		
" 28a	25 39	" 14	42 44		
" 29	48 36	" 15	44 15		
" 30	35 24	" 15a	44 21		
" 31	68 22	" 16	63 12		
" 32	49 15	" 17	89 27		
" 32a	55 10	" 18	29 78		
" 33	23 0	" 19	41 30		
" 33a	37 46	" 20	20 51		
" 33b	9 9	" 21	43 44		
" 34	20 49	" 22	26 22		
" 35	43 31	" 22a	21 18		
" 36	45 40	" 23	59 33		
	1550 1776	" 24	43 38		
		" 25	84 25		
		" 26	37 11		
		" 27	42 36		
		" 27a	48 20		
		" 28	63 20		
		" 28a	44 22		
		" 29	67 19		
		" 30	43 15		
		" 31	73 17		
		" 32	58 7		

Majorité pour Duquette—483.
Majority for Duquette—843.

St-Henri

Charge No 1. Election par acclamation.
Office No. 1. Election by acclamation.

Charge No 2. Election par acclamation.
Office No. 2. Election by acclamation.

Ste-Cunégonde

Charge No 1. Election par acclamation.
Office No. 1. Election by acclamation.

Charge No 2. Election par acclamation.
Office No. 2. Election by acclamation.

Majorité pour Lespérance—226.
Majority for Lespérance—226.

Charge No 2. — Office No. 2.

Duquette Lalonde

Poll No 1.	22	23
" 2.	36	37

Certifié.

L.O. DAVID,
Officier-Rapporteur.

RENE BAUSET,
Secrétaire d'élection.

BUREAU DU GREFFIER DE LA CITE,
5 février 1908.

Certified.

L.O. DAVID,
Returning Officer.

RENE BAUSET,
Election Secretary.

CITY CLERK'S OFFICE.
February 5th, 1908.

PROCLAMATION

AVIS PUBLIC est par les présentes donné qu'après la clôture de l'élection pour la mairie et les charges d'échevins pour lesquelles il y avait contestation, qui a eu lieu lundi, le 3me jour de février courant, et après l'examen et l'addition finale des suffrages, d'après les relevés fournis par les différents sous-officiers-rapporteurs nommés pour les divers bureaux de votation, et après l'expiration du délai fixé par la loi pour un décompte devant un juge, j'ai constaté que les candidats suivants ont obtenu la majorité des votes et je proclame, par conséquent, lesdits candidats dûment élus:

MAIRIE
Louis Payette.

CHARGES D'ECHEVINS

QUARTIER CENTRE.	
Charge No 1.	W.E. Mount.
Charge No 2.	H. Mercier.
QUARTIER STE-ANNE.	
Charge No 1.	D. Gallery.
QUARTIER ST-JOSEPH.	
Charge No 1.	J.B.A. Martin.
Charge No 2.	J.H. Nault.
QUARTIER ST-ANDRE.	
Charge No 1.	Geo. W. Sadler.
QUARTIER ST-LOUIS.	
Charge No 1.	J.B. Lamoureux.
QUARTIER ST-LAURENT.	
Charge No 1.	J.B. Clearihue.

PUBLIC NOTICE is hereby given that after the closing of the election for the Mayoralty and the offices of Aldermen, where there was a contest, held on Monday, the 3rd day of February inst., and after the examination and final addition of the votes, as furnished by the returns of the Deputy Returning Officers appointed for the different polls, and after the expiration of the delay fixed by law for a recount before a judge, I have ascertained that the following candidates have obtained the majority of the votes, and I accordingly proclaim the said candidates duly elected:

MAYORALTY.
Louis Payette.

ALDERMEN:

CENTRE WARD.

Office No. 1.	W. E. Mount.
Office No. 2.	H. Mercier.
ST. ANN'S WARD.	
Office No. 1.	D. Gallery.
ST. JOSEPH'S WARD.	
Office No. 1.	J. B. A. Martin.
Office No. 2.	J. H. Nault.
ST. ANDREW'S WARD.	
Office No. 1.	Geo. W. Sadler.
ST. LOUIS WARD.	
Office No. 1.	J. B. Lamoureux.
ST. LAWRENCE WARD.	
Office No. 1.	J. B. Clearihue.

QUARTIER HOCHELAGA.

Charge No 1. John Bumbray.
 Charge No 2. J.-P. Marin.

QUARTIER ST-JEAN-BAPTISTE.

Charge No 1. Noé Leclaire.
 Charge No 2. W.-J. Proulx.

QUARTIER DUVERNAY.

Charge No 1. Elie Major.

QUARTIER ST-DENIS.

Charge No 1. J.-J.-E. Lespérance.
 Charge No 2. J.-G. Duquette.

L.-O. DAVID,
Officier-Rapporteur.

HÔTEL DE VILLE.

Montréal, 10 février 1908.

CONSEIL MUNICIPAL

ASSEMBLÉE MENSUELLE DU 10 FÉVRIER

ORDRE DU JOUR

1. Rapport du Greffier de la Cité sur l'élection du 3 Février 1908.
2. Discours d'adieu du Maire sortant de charge.
3. Discours d'inauguration du Maire élu.
4. Nomination du Maire suppléant.
5. Nomination des Commissions permanentes et spéciales

L.-O. DAVID,
Greffier de la Cité.



IMPRESSION
Des RAPPORTS ANNUELS
1907

DES SOUMISSIONS cachetées, adressées au soussigné, et portant les mots "Soumissions pour l'impression des rapports annuels pour 1907", seront reçues au bureau du greffier de la Cité jusqu'à midi, mardi, le 18 février courant, pour l'impression des rapports annuels de 1907 de tous les départements de la Cité, savoir: du Trésorier, du Contrôleur et Auditeur, de la Voirie, de l'Aqueduc, des Licences, de l'Eclairage, de l'Hygiène, de la Police, de la Cour du Recorder, des Avocats, des Inspecteurs des Chaudières et de Bâtiments, du Greffier. Ces rapports devront être imprimés dans les deux langues.

Le prix demandé devra être net et devra aussi comprendre le papier, la composition, l'impression, le brochage, etc. Les caractères employés, la qualité du papier, ainsi que toutes autres particularités du travail devront être tels que désignés dans le cahier des charges que l'on pourra obtenir avec les formules de soumissions et tous les renseignements relatifs audit travail en s'adressant au Commis des Impressions de la Cité.

La Commission de l'Hôtel de Ville ne s'engage à accepter la plus basse ni aucune autre des soumissions.

Un contrat devra être passé entre la Ville et l'adjudicataire, et le coût dudit contrat sera à la charge de ce dernier, ainsi que le coût d'une copie dudit contrat pour la Ville.

Lesdites soumissions seront ouvertes par le greffier de la Cité à la première assemblée de la Commission de l'Hôtel de Ville, après la réception des soumissions.

Un certificat de dépôt de \$200 entre les mains du trésorier de la Cité, devra accompagner la soumission.

L.-O. DAVID,
Greffier de la Cité.

BUREAU DU GREFFIER DE LA CITÉ,
 HÔTEL DE VILLE,
 Montréal, 6 février 1908.

HOCHELAGA WARD.

Office No. 1. John Bumbray.
 Office No. 2. J. P. Marin.

ST. JEAN BAPTISTE WARD.

Office No. 1. Noé Leclaire.
 Office No. 2. W. J. Proulx.

DUVERNAY WARD.

Office No. 1. Elie Major.

ST. DENIS WARD.

Office No. 1. J. J. E. Lespérance.
 Office No. 2. J. G. Duquette.

L. O. DAVID,
Returning-Officer.

CITY HALL,

Montreal, 10th February 1908.

CITY COUNCIL

MONTHLY MEETING OF THE 10th FEBRUARY

ORDER OF THE DAY.

1. Report of City Clerk on the Elections of the 3rd February, 1908.
2. Valedictory of the Ex-Mayor.
3. Mayor's Inaugural Address.
4. Appointment of the Acting-Mayor.
5. Appointment of Permanent and Special Committees.

L. O. DAVID,
City Clerk.



PRINTING
OF ANNUAL REPORTS
1907

SEALED TENDERS, addressed to the undersigned and endorsed "Tender for the printing of the annual reports for 1907," will be received at the City Clerk's Office, up to noon, on Tuesday, the 18th February inst., for the printing of the annual reports of all the departments of the City for 1907, namely, of the Treasurer, Comptroller and Auditor, Road, Water Works, License, Light, Hygiene and Police departments, Recorders Court, City Attorneys, Boiler Inspector, Building Inspector, and City Clerk.

Said reports shall be printed in both languages.

The price asked for shall be nett and shall also include the paper, setting up, press-work, stitching, etc. The type used, the quality of the paper as well as all other parts of the work shall be such as designated in the specifications, which may be obtained, together with the forms of tenders and all information required, by applying to the Clerk of Printing, City Hall.

The City Hall Committee do not bound themselves to accept the lowest or any tender.

A contract shall be entered into between the City and the successful tenderer, and the cost of said contract shall be paid by the latter as well as the cost of a copy thereof for the City.

The said tenders will be opened by the City Clerk at the first meeting of the City Hall Committee following the reception thereof.

A certificate of deposit of \$200 with the City Treasurer must accompany each tender.

L. O. DAVID,
City Clerk.

CITY CLERK'S OFFICE,
 CITY HALL,

Montreal, 6th Feb. 1908.

MUTATIONS DE PROPRIÉTÉS—TRANSFERS OF PROPERTIES

HOCHELAGA & JACQUES-CARTIER

Quartier Ward.	No. d'enregistrement Registration Number.	Date de l'enregistre- ment Date of registration.	Date du contrat Date of deed.	Vendeur Vendor.	Acquéreur Purchaser.	No. du cadastre Cadastral number.	Etendue—Area.	Rue Street.	Genre.—a—Descript.	Prix Price.
St. Henri...	141592	27 janv. 1908.	23 jan. 1908	Ve C. H. Letourneux & al.	A. Tassé.	1703-62.	1918	25 à 27 Dagenais.	B	\$ 900 00
St. J. Bte...	141595	27 " "	25 " "	O. Ornstein.	A. Sutherland.	441-25.	2520	96 à 100 Mitchison.	B	Borde- reau.
Ste. Marie...	141597	27 " "	18 sept. 1907	Ve J. I. Dumont.	E. Greenwood.	166-93.	2425	121 à 123 Frontenac.	B	3300 00
do	141598	27 " "	6 nov. "	De J. U. Emard.	E. G. W. Bell.	166-45.	2492	Harbour.	L	872 20
St. Henri...	141602	27 " "	22 jan. 1908	F. H. Poitras.	Z. Mallette.	1705-54.	1715	81 à 83 St. Elizabeth.	B	2950 00
Hochelaga	141608	28 " "	4 nov. 1907	T. Ethier.	P. Duhamel.	P. S. O. 40.	3446	1727 à 1737 Notre Dame.	B	8250 00
Ste. Cuné- gonde	141613	28 " "	17 jan. 1908	J. Bte Drapeau.	J. Dufty.	P. 386-166.	2256	7 à 11 Calumet.	B	5500 00
Ste. Marie	141631	28 " "	18 " "	Suc. J. D. Molson.	K. Renheiwicz.	166-502.	1760	Frontenac.	L	437 50
St. Denis	141643	28 " "	14 " "	J. Bte Dubé.	A. Boisjoli.	339-303.	2375	282 à 284 Fabre.	B	2900 00
Hochelaga	141650	29 " "	27 " "	The M. L. & Imp. Coy	A. Ménard.	29-231.	2750	Stadacona.	L	495 00
Ste. Marie	141651	29 " "	20 août 1907	M. Gorman.	A. Gillen.	166-156 à 158.	6026	198 à 204a Harbour.	B	5000 00
do	141652	29 " "	18 sept. "	C. Michaud.	G. R. Lighthall.	166-137 à 144.	16040	Lafontaine.	L	6970 30
St. J. Bte...	141668	29 " "	21 jan. 1908	H. Dandurand.	Isabelle & Robillard.	15-1008.	1440	778 à 778a Sanguinet.	B	Droits. 2800 00
do	141678	29 " "	23 " "	M. Sawyer & ux.	E. G. Cunningham.	15-1099, ½ S. E. 15-1100	2250	557 à 559 Laval.	B	
St. Denis	141680	29 " "	27 " "	St. Denis Land Co.	E. L. Baugh.	½ N. O. 8-376. ½ S. E. 8-377.	6500	St-Denis.	L	1170 00
Hochelaga	141682	29 " "	17 " "	F. Foisy.	R. Ouimet.	32-1.	4350	37 à 41 Cuvillier.	B	2200 00
St. Denis	141684	29 " "	17 " "	P. Allard.	J. Archambault.	325-160 & 161.	2964	Resther.	L	1000 00
St. Henri	141691	29 " "	20 " "	E. Fauteux, fils.	L. Deneau.	P. S. 1153.	3487	1861 à 1863 St. Jacques.	B	6000 00
St. J. Bte...	141702	30 " "	30 déc 1907	A. Langevin.	J. Brault.	14-2, P. 14-3, P. 15-693	3916	608 à 612 Mont Royal & 893 Sanguinet.	B	7200 00 300 00
Ste. Marie	141708	30 " "	29 jan. 1908	M. Guibord.	V. Lafontaine.	166-363.	1760	Iberville.	L	
Duvernay	141712	30 " "	27 " "	L. Giguère.	Ve M. Côté.	11-27 & 28.	3760	510 à 516 Mentana.	B	5300 00
Hochelaga...	141715	30 " "	21 " "	G. Rivet.	P. Larivière.	29-327 & 331, P. 29-330	5307	131 à 133 Davidson & 141 à 147 Davidson.	B	5900 00 9450 00
St. Henri...	141717	30 " "	27 " "	Z. Legault.	G. Fournier.	1704-137 & 138.	5000	150 à 160 Poplar.	B	
St. Denis	141725	31 " "	27 " "	J. B. dit Desrochers.	C. Boucher.	242.	3019	264 à 266 Carrières.	B	2800 00
do	141726	31 " "	15 " "	P. Ménard.	S. Papillon.	8-635.	3400	533 à 537a Huntly.	B	4400 00
do	141727	31 " "	24 " "	J. Archambault.	L. Z. Renaud.	325-162 & 164.	4446	125 à 133 Resther.	B	9000 00
Hochelaga...	141731	31 " "	18 " "	Desnoyers & Varin.	Delle D. Beaudoin.	23-138.	2640	1964 à 1968 Ontario.	B	6150 00
St. Denis	141738	31 " "	30 " "	J. Demontigny.	Delles R. & C. Daoust.	7-252.	2750	1637 Labelle.	B	501 00
St. J. Bte...	141755	1 fév.	25 " "	Isabelle & Robillard.	L. A. Delorme.	15-1008.	1440	778 à 778a Sanguinet.	B	Droits. 220 00
Hochelaga...	141766	1 " "	29 " "	Suc. Hy Hogan.	C. Gélineau.	148-2485.	2000	Wurtele.	L	
Ste. Marie	141770	1 " "	7 déc. 1907	A. Cardinal.	Arth. Toupin & Cie.	172-1256.	2160	271 à 273 Masson.	B	2600 00

MUTATIONS DE PROPRIÉTÉS. *Suite.* — TRANSFERS OF PROPERTIES. *Cont.*

MONTREAL-EST.

MONTREAL-EAST.

Quartier Ward.	No. d'enregistrement Registration Number.	Date de l'enregist. Date of registration.	Date du Contrat Date of Deed.	Vendeur Vendor.	Acquéreur. Purchaser.	No. du Cadastre Cadastral Number.	Etendue.—Area.	Rue Street.	Genre.—a.—Description	Prix. Price.
Ste. Marie...	70963	27 jan. 1908		J. Gougeon.....	J. B. Pelletier.....	1462-6.....	1373	Ave Lalonde 628 à 634	L	400 00
St. Louis ...	70965	27 " "	17 jan. 1908	R. Leroux.....	L. Millman.....	P. 893.....	2675	Ave Ho. de Ville	B	5600 00
do	70966	27 " "	17 " "	L. Millman.....	G. Margolis.....	P. 893.....	2675	do	B	9700 00
LaFontaine.	70969	28 " "	24 " "	De Z. Riopel.....	De S. Rochon.....	1203-245, 1203-248.....	5488	St. Hubert.....	L	3567 00
St. Jacques..	70973	28 " "	25 " "	H. L. Auclair.....	A. Rugolo.....	252-2.....	2481	St. Timothée..	B	3950 00
LaFontaine.	70975	28 " "	28 " "	L. Sauriol.....	G. E. Boileau.....	1006-4.....	1222	526 Beaudry....	B	725 00
St. Louis....	70978	29 " "	20 " "	J. McCall.....	A. Schuman.....	P. 941-6.....	1440	286 à 288 Roy... 41a à 41c	B	4500 00
LaFontaine..	70982	29 " "	28 " "	De O. Archambault et al.....	J. N. Perrault... S. Ludkofsky et al....	Droits dans 1211-14. 122.....	2650 6304	Mentana..... 612 St. Laurent. 297 à 301	B B	3700 00
St. Laurent.	70984	29 " "	29 " "		H. Lippé.....			St. Chs. Borr... 378 à 584 Craig... 88 à 94 Wolfe...	B B	1 00 & consid.
St. Jacques.	70988	30 " "	13 " "	De P. Donnelly.....	N. Pérodeau.....	91.....	12209	719 Notre Dame. 413 St. André...	B B	1 00 & consid.
Papineau...	70992	30 " "	13 " "	do	do	105.....	12860	774 à 778	B	4500 00
LaFontaine.	70992	30 " "	29 " "	De Z. Beauchamp.....	J. L'Heureux.....	P. N. E. 878.....	4560	St. Hubert..	B	8300 00
do	70995	30 " "	25 " "	P. Finlayson.....	H. Guy.....	1203-252.....	2744	801 à 811	B	17500 00
do	71004	1 fév. "	31 " "	J. E. Lacasse et al ...	A. Brisset.....	1202-31 & 35.....	4750	688 à 692	B	10000 00
do	71005	1 " "	24 " "	J. Archambault	L. Z. Renaud.....	1213-5.....	2437	Sherbrooke.. 154 à 166	B	
St. Laurent.	71009	1 " "	31 " "	P. Durand.....	I. Vineberg et al.....	P. 564 & 565.....	7297	Dorchester.. 120 à 124 Chenneville..	B B	
St. Louis....	71010	1 " "	18 " "	De I. Brodsky.....	J. Kernes.....	P. N. O. 192.....	1594	141 à 145 St. George.. 76 Sanguinet...	B B	30200 00 3600 00

MONTREAL-OUEST

MONTREAL-WEST.

St. Joseph...	145065	27 Jan. 1908...	29 juil. 1907	J. Bélair.....	F. H. Shaw.....	P. S. O. 47 & 48.....	4061	1212 à 1220 St. Jacques.. 104 à 106	B	6500 00
St. George ..	145066	28 " "	28 jan. 1908	H. A. Hutchins.....	J. Markum.....	1860-E.....	2500	Durocher..	B	7100 00
do	145069	29 " "	29 " "	J. Binette.....	De B. W. T. Last....	P. centrale 1027....	1988	742 Latour.....	B	3600 00
St. Joseph...	145074	30 " "	28 " "	Shérif de Montréal...	C. S. Wallace.....	P. 135 & 136.....	4000	61 à 65 Delisle..	B	4450 00
Ste. Anne...	145075	30 " "	29 " "	Laporte Martin & Cie	C. H. Catelli.....	P. 1756-24 & 25, P. 1756-26.....	9175	25 à 29 William..	B	13000 00

" { B—Bâtisse ; Building.
L—Lot ; terrain vague.

P. TERRAULT,

Registraire de la Ville.—Registrar.

Par A. SAUVÉ.