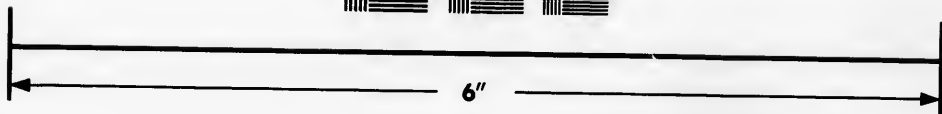
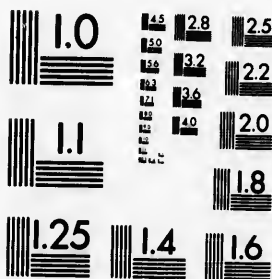


**IMAGE EVALUATION
TEST TARGET (MT-3)**



**Photographic
Sciences
Corporation**

23 WEST MAIN STREET
WEBSTER, N.Y. 14580
(716) 872-4503

**CIHM
Microfiche
Series
(Monographs)**

**ICMH
Collection de
microfiches
(monographies)**



Canadian Institute for Historical Microreproductions / Institut canadien de microreproductions historiques

© 1993

Technical and Bibliographic Notes / Notes techniques et bibliographiques

The Institute has attempted to obtain the best original copy available for filming. Features of this copy which may be bibliographically unique, which may alter any of the images in the reproduction, or which may significantly change the usual method of filming, are checked below.

L'Institut a microfilmé le meilleur exemplaire qu'il lui a été possible de se procurer. Les détails de cet exemplaire qui sont peut-être uniques du point de vue bibliographique, qui peuvent modifier une image reproduite, ou qui peuvent exiger une modification dans la méthode normale de filmage sont indiqués ci-dessous.

Coloured covers/
Couverture de couleur

Coloured pages/
Pages de couleur

Covers damaged/
Couverture endommagée

Pages damaged/
Pages endommagées

Covers restored and/or laminated/
Couverture restaurée et/ou pelliculée

Pages restored and/or laminated/
Pages restaurées et/ou pelliculées

Cover title missing/
Le titre de couverture manque

Pages discoloured, stained or foxed/
Pages décolorées, tachetées ou piquées

Coloured maps/
Cartes géographiques en couleur

Pages detached/
Pages détachées

Coloured ink (i.e. other than blue or black)/
Encre de couleur (i.e. autre que bleue ou noire)

Showthrough/
Transparence

Coloured plates and/or illustrations/
Planches et/ou illustrations en couleur

Quality of print varies/
Qualité inégale de l'impression

Bound with other material/
Relié avec d'autres documents

Continuous pagination/
Pagination continue

Tight binding may cause shadows or distortion along interior margin/
La reliure serrée peut causer de l'ombre ou de la distorsion le long de la marge intérieure

Includes index(es)/
Comprend un (des) index

Blank leaves added during restoration may appear within the text. Whenever possible, these have been omitted from filming/
Il se peut que certaines pages blanches ajoutées lors d'une restauration apparaissent dans le texte, mais, lorsque cela était possible, ces pages n'ont pas été filmées.

Title on header taken from:/
Le titre de l'en-tête provient:

Title page of issue/
Page de titre de la livraison

Caption of issue/
Titre de départ de la livraison

Masthead/
Générique (périodiques) de la livraison

Additional comments:/
Commentaires supplémentaires:

This item is filmed at the reduction ratio checked below/
Ce document est filmé au taux de réduction indiqué ci-dessous.

10X	12X	14X	16X	18X	20X	22X	24X	26X	28X	30X	32X
							✓				

The copy filmed here has been reproduced thanks to the generosity of:

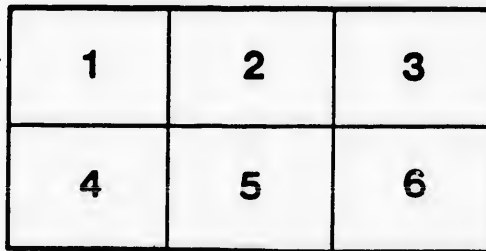
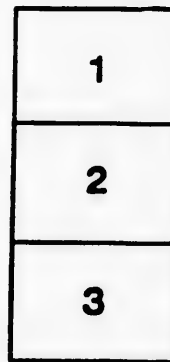
University of Guelph

The images appearing here are the best quality possible considering the condition and legibility of the original copy and in keeping with the filming contract specifications.

Original copies in printed paper covers are filmed beginning with the front cover and ending on the last page with a printed or illustrated impression, or the back cover when appropriate. All other original copies are filmed beginning on the first page with a printed or illustrated impression, and ending on the last page with a printed or illustrated impression.

The last recorded frame on each microfiche shall contain the symbol \rightarrow (meaning "CONTINUED"), or the symbol ∇ (meaning "END"), whichever applies.

Maps, plates, charts, etc., may be filmed at different reduction ratios. Those too large to be entirely included in one exposure are filmed beginning in the upper left corner, left to right and top to bottom, as many frames as required. The following diagrams illustrate the method:



L'exemplaire filmé fut reproduit grâce à la générosité de:

University of Guelph

Les images suivantes ont été reproduites avec le plus grand soin, compte tenu de la condition et de la netteté de l'exemplaire filmé, et en conformité avec les conditions du contrat de filmage.

Les exemplaires originaux dont la couverture en papier est imprimée sont filmés en commençant par le premier plat et en terminant soit par la dernière page qui comporte une empreinte d'impression ou d'illustration, soit par le second plat, selon le cas. Tous les autres exemplaires originaux sont filmés en commençant par la première page qui comporte une empreinte d'impression ou d'illustration et en terminant par la dernière page qui comporte une telle empreinte.

Un des symboles suivants apparaît sur la dernière image de chaque microfiche, selon le cas: le symbole \rightarrow signifie "A SUIVRE", le symbole ∇ signifie "FIN".

Les cartes, planches, tableaux, etc., peuvent être filmés à des taux de réduction différents. Lorsque le document est trop grand pour être reproduit en un seul cliché, il est filmé à partir de l'angle supérieur gauche, de gauche à droite, et de haut en bas, en prenant le nombre d'images nécessaire. Les diagrammes suivants illustrent la méthode.

qu'il
cat
de vue
ge
ation
ués

W. Sanders

Gladstone
Park

Lander
WORLD'S COLUMBIAN
EXPOSITION, 1893. *Part*

one
Part
CATALOGUE 

OF

 **FRUIT**

 **POMOLOGICAL DEPARTMENT, TORONTO. CANADA.**

*Published under authority of N. Awrey, Esq., M.P.P.,
Commissioner for Ontario.*

TORONTO:
PRINTED BY WARWICK & SONS, 68 AND 70 FRONT STREET WEST
1893.

the i
but s
when
show
some

Islan
the s
In a
said :
consi
burg
at Vi
Prov
in an
than
is de
great
orcha

tion,
their
hype
the a
hund
have
gener
the l

Th
the C
porat



FRUIT CULTURE IN ONTARIO.

A glance at the map of Ontario will reveal the fact that a large portion of the inhabited territory is bound by water. Huron, Erie and Ontario—seas in all but saltness—close in about the peninsula where settlement is most dense, and where as a rule the land is easily responsive to kindly treatment. The soil shows considerable variation between the limits described, yet in every county some kinds of fruit, large and small, are successfully grown.

Here, too, climate as well as soil is favorable to horticulture. Pelee Island, the most southerly point of Ontario—and of the Dominion—lies in about the same latitude as Newport, R.I., and is farther south than Rome in Italy. In a paper read before the Canadian Institute in 1884, a well-known climatologist said: "By a British standard the summers of much of the Province may be considered long. May in south-western Ontario is warmer than July in Edinburgh; September is warmer than July in London, and warmer than September at Vienna. The vine, maize and sorghum fully mature in most parts of the Province south of the 46th parallel, and in not a few districts as abundantly as in any part of America or Europe." The winters in Ontario are, as a rule, colder than those of the European countries just referred to, yet it is seldom that injury is done to fruit trees, bushes or vines by the severity of the frost, and the greater depth of our snowfall is regarded as a generous protection to garden and orchard.

The splendid display of Canadian fruit at the Indian and Colonial Exhibition, held in London in 1886, was a revelation to multitudes who had formed their conceptions of Canada from pictures of ice palaces and photographs of hyperborean individuals in furs, or on snow-shoes or toboggans—the property of the artist's studio. Visitors were particularly interested in the exhibit of one hundred jars of grapes, and the remark was so frequently heard, "These must have been grown under glass," that it was found necessary to enlighten the general public by large placards placed at the corners of the "trophy" bearing the legend, "Canadian Fruits, all grown in the open air."

The importance of fruit growing in this Province may be seen in the fact that the Ontario Fruit Growers' Association, a society organized in 1859, and incorporated in 1865, claims a membership of 2,700, the largest, as far as known, of

any similar body in the world. This Association has been the means of introducing into Canada many varieties of fruit now regarded as standards, and has given a great impetus to fruit culture, owing largely to the liberal aid of the Ontario Government.

The fruit most generally cultivated in Ontario, and the export of which has grown to large proportions, is the apple. All the older settled counties have their orchards. The export of Canadian apples has developed marvellously, as will be seen from the following :

	Barrels.	Value.
1868	34,405	\$ 87,333
1872	106,568	264,015
1882	212,526	540,464
1892	690,951	1,444,833

It has been estimated by a careful authority that the Province of Ontario furnishes about five-sixths of the apples exported from Canada. The total value of fruit (dried, green and canned), exported from the Dominion in the year ending June, 1892, was \$1,634,182.

The high character of Ontario apples is universally admitted. The product of no other country combines in so complete a degree the three great qualities of color, flavor and juiciness. Our clear summer skies, rivalling those of Italy, paint our ruddier sorts in deep or delicate blushings, while the russets range from gold to darkest bronze in pleasing shadings. The long and gentle autumn exerts a mellowing influence upon the apple, in which nature's chemistry turns into delicious flavors and sub-acids the rich juices of this pleasant fruit, and some subtle climatic influence appears to lend power to the winter sorts to long resist decay. On the 10th of May, 1886, the Royal Horticultural Society of Great Britain held a show, and Canada and Australia (then making a display at the Indian and Colonial Exhibition) were invited to participate. The Australian apples shown were gathered in March, and had just arrived by fast steamship, while the Canadian apples had been off the trees for from six to seven months. After careful comparison the judges decided that while the Australian apples were fresher in condition, and some of them larger than the Canadian, the latter were more highly colored and better flavored. The honors were divided, each exhibit receiving a silver medal and a certificate of merit.

A Liverpool market report, dated March 25th, 1893, shows the high quality of "Canadian" apples, a term used to distinguish Ontario fruit from that of the Maritime Provinces. Canadian Baldwins are quoted at 14s. to 19s. per barrel, while "Maine" apples (American) bring only 12s. to 15s. Our Greenings command 11s. to 17s., while Maine can get but 10s. to 13s. 9d.; and Canadian Russets

range from 10s. to 16s. 6d., as compared with 10s. to 11s. for American. A leading agriculturist has estimated the value to the owner of the product of an acre of apple trees in a good year at \$100.

Pears flourish with us. The blight has been light in recent years, and large yields of well matured fruit is the rule. A recent shipment of Ontario pears to Belgium has been reported—a notable instance of the fruit seeking a market in the home of the scion.

Peaches rivalling those of Delaware are grown in the Niagara district. The peach area is a surprisingly large one, extending from Lake St. Clair along the genial shores of Lake Erie and around Lake Ontario to Halton, and the business is in the hands of unusually intelligent and well-skilled men. A former president of the Ontario Fruit Growers' Association placed the profits of an acre of peaches in an ordinarily good year at \$160, and in unusually good years 10 acres of peaches should be worth \$2,000.

Plums of every sort, in spite of attacks from cureulio and black-knot, flourish in Ontario. Shipments of thousands of bushels are made annually to the United States, and immense quantities are consumed at home in the form of preserves. Native American varieties are being introduced every year, but such high class plums as the McLaughlin, Imperial and Yellow Gage, Coe's Golden Drop, Lombard and Washington are grown to perfection in a large range of counties, and find a ready and profitable market. The insect and fungous enemies of the plum are not dreaded so much as they were a few years ago. Mechanics and chemistry—the spray and well designed insecticides and fungicides—have come to the relief of the badly-beset orchardist.

Cherries are common, but being a rather perishable fruit, they are not so much in favor for market. Like the plum, great quantities are preserved at home, although in season the market if short is large. Nearly every variety, from the tart native sorts to the sweeter and richer English kinds, is successfully raised.

Nectarines, apricots and quinces are grown in a few localities, but their general culture is not practised. The fig has also been matured in the open air.

Reference has already been made to the grape as being grown out of doors. The extent of Ontario grape culture surprises those who have not seen an Essex county vineyard. Between Windsor and Toronto thousands of acres are devoted to grapes, and as far north as the county of Huron prosperous vineyards are to be found.

A Pelee Island correspondent of the Ontario Bureau of Industries thus refers to grapes in his report for November, 1891: "Our grape crop was a remarkable

means of intro-
standards, and has
beral aid of the

rt of which has
ties have their
usly, as will be

Value.
87,333
264,015
40,464
44,833

nce of Ontario
a. The total
inion in the

The product
reat qualities
ose of Italy,
russets range
entle autumn
mistry turns
at fruit, and
sorts to long
l Society of
a display at
e Australian
steamship,
ven months.
alian apples
a, the latter
vided, each

igh quality
that of the
per barrel,
mings com-
an Russets

one. Over 260 tons of the finest grapes have been pressed in one large wine cellar, and about 100 tons more have been made into wine by others, or shipped in baskets for table use. Several persons have had five tons of Concord to the acre." A Wentworth county correspondent in his report said: "About ten tons of grapes have been shipped daily from Winona (a small railway station) during the past six weeks, with two weeks' supply yet to go."

Pure grape wine is becoming an important industry in the Lake Erie region, and in this connection the opinion of M. Girardot, a native of the leading wine district of France, is worth quoting: "The yield here (Essex county, Ont.) is at least four to five tons to the acre; there not more than two. The wine here is equal to any in Eastern France. From twenty acres of grapes the yield of wine has averaged about 6,000 gallons, and it is very remunerative, a profit of \$800 (£160) per acre being frequently obtained."

Strawberries are widely grown. Oakville, on Lake Ontario, has become famous as a shipping station for this choicest of berries, which grows to perfection on the sandy loams along the lake side. In Kent and Essex, however, and in eastern Ontario where the St. Lawrence River forms, more particularly in the county of Leeds, there are tracts of land which challenge the world in the yield per acre and the glorious quality of the fruit. But there are few, if any, counties in the Province where the strawberry cannot be grown to give a fair return.

The raspberry is a native of Ontario, and the wild sorts furnish large stores of fruit, both for home and the home market. The cultivated varieties, red and white, find a hospitable climate here, while black-caps and blackberries are almost sure to flourish where properly handled.

Great quantities of gooseberries are raised, and with intelligent management bring large gains to growers, as the market is a good one. English and American varieties are chiefly grown, although some native seedlings are popular.

Currants, red, white and black, are generally grown, and with profit. Large quantities of these fruits are preserved both for home use and for the market, and they are particularly esteemed in the form of jellies.

The cranberry, which grows wild in different parts of the Province, is now being cultivated with a fair degree of success in marshes which otherwise would be waste land. Cranberries are likely to command a good market, as the demand for them has always been good.

The huckleberry, or blueberry, is also a native of Ontario, but is not cultivated save in rare instances. It abounds in the northern parts of the Province, more especially in the wilds of Muskoka and the more unsettled parts of the Georgian Bay region.

Fruits other than those already named are to be found growing in Ontario, but only to a limited extent.

Edible nuts are also grown for profit, and ready sales are found for chestnuts, hickory nuts, butternuts, walnuts and hazel nuts, the product of Ontario gardens and forests.

Although, as has been already indicated, the Lake Erie and Niagara districts are regarded as the choicest fruit sections of the Province, nearly every other county in western Ontario comes well up in the raising of some one or more kinds of fruit; while the Lake Ontario counties generally, and a few of the counties along the great St. Lawrence, are to the front in certain branches of fruit culture. The Georgian Bay counties, also, will not abate their claim to a leading place in the cultivation of some choice fruits. In short, the Province of Ontario is fast becoming a great garden. It has a genial climate and a generous soil; and what has already been accomplished in the way of supplying the home market and commanding a high place in foreign markets is, we believe, but an earnest of the larger victories that await our horticulture in the near future.

l in one large wine
by others, or shipped
s of Concord to the
l: "About ten tons
way station) during

the Lake Erie region,
of the leading wine
county, Ont.) is at
. The wine here is
s the yield of wine
ve, a profit of \$800

ntario, has become
h grows to perfec-
ssex, however, and
particularly in the
world in the yield
ew, if any, counties
ve a fair return.

furnish large stores
d varieties, red and
l blackberries are

igent management
lish and American
popular.

with profit. Large
d for the market,

Province, is now
a otherwise would
et, as the demand

, but is not culti-
s of the Province,
ttled parts of the

V

- 1 Li
- 2
- 3 Je
- 4
- 5 W
- 6
- 7
- 8 Cr
- 9 Bu
- 10
- 11 Je
- 12 Cr
- 13
- 14 My
- 15
- 16 Ca
- 17 Mi
- 18
- 19 Ma
- 20 Eu
- 21 Lo
- 22 Ca
- 23 Da
- 24 Ha
- 25 Ser
- 26 W
- 27 Mi
- 28 Jes
- 29 W
- 30 Bu
- 31 W
- 32 Pe
- 33 Fa
- 34 Bu
- 35 Eu
- 36 Sa
- 37 Bu
- 38 Cr
- 39 Bu
- 40 Cr
- 41 W
- 42 W
- 43 Da
- 44 Ser
- 45 Ma
- 46 Atl
- 47 Sac
- 48 Wi

CATALOGUE OF FRUIT.

ONTARIO SECTION.

World's Columbian Exposition.

STRAWBERRIES.

1	Little's No. 10, John Kerman, Lincoln Co., Grimsby.		
2	do do do		do
3	Jessie, F. G. Hebert,		do
4	do		do
5	Williams Improved, T. H. Laidman.		do
6	do do do		do
7	do do do		do
8	Crescent Seedling, do		do
9	Bubach, A. M. Smith, Lincoln Co., St. Catharines.		
10	do do do		
11	Jessie, A. M. Smith,		do
12	Crescent Seedling, John Broderick do		
13	do do do		
14	Mystic, Carpenter & Son, Wentworth Co., Winona.		
15	do do do		
16	Captain Jack, Isaac Smith,	do	Stoney Creek.
17	Miami, G. B. Galbraith,	do	do
18	do do do	do	do
19	Martha, W. W. Hilborn, Essex Co., Leamington.		
20	Eureka, do do		
21	Lovett, do do		
22	Captain Jack, do do		
23	Daisy, do do		
24	Haverland, do do		
25	Seneca Queen, do do		
26	Walton, do do		
27	Middlefield, do do		
28	Jessie, do do		
29	Westbrook, do do		
30	Bubach, do do		
31	Woolverton, do do		
32	Pearl, do do		
33	Farnsworth, do do		
34	Bubach, do do		
35	Eureka, do do		
36	Saunders, do do		
37	Bubach, do do		
38	Crawford, do do		
39	Bubach, do do		
40	Crawford, do do		
41	Woodruff, do do		
42	Warfield, do do		
43	Daisy, do do		
44	Seneca Queen, do do		
45	Manchester, do do		
46	Atlantic, do do		
47	Sadie, do do		
48	Wilson, do do		

49	Boynton, W. W.	Hilborn, Essex Co.,	Leamington.
50	Cloud,	do	do
51	Crescent Seedling	do	do
52	Seneca Queen,	do	do
53	Yale,	do	do
54	Great Pacific,	do	do
55	Beder Wood,	do	do
56	Edgar Queen,	do	do
57	Mrs. Cleveland,	do	do
58	Advocate,	do	do
59	Advocate,	do	do
60	Cumberland,	do	do
61	Jessie,	do	do
62	Hatfield,	do	do
63	Parker Earle,	do	do
64	do	do	do
65	Jessie,	James Sinclair,	do Windsor.
66	Bubach,	do	do do
67	Bubach,	do	do do
68	Haverland, German Findlay,	do	do Walkerville.
69	Victoria, Mrs. Williams,	do	do Windsor.
70	Jumbo, W. Robinson,	do	do do
71	Haverland, Linus Woolverton,	Lincoln Co.,	Grimsby.
72	Beeback,	do	do do
73	Williams,	do	do do
74	Jessie,	do	do do
75	Saunders,	do	do do
76	Woolverton, John Little,	Middlesex Co.,	Granton.
77	Wilson, A. B. Randall,	Lincoln Co.,	Grimsby.
78	Wilson,	do	do do
79	Cloud Seedling, A. G. Hull,	do	do St. Catharines.
80	Haverland,	do	do do
81	Bubach, No. 5,	do	do do
82	Jessie,	do	do do
83	Beeback, No. 5,	do	do do
84	Belmont, L. Woolverton,	do	do Grimsby.
85	Haverland,	do	do do
86	Gaudy, Joseph Woon,	do	do Beamsville.†
87	Dominion, A. M. Smith,	do	do St. Catharines.
88	Woolverton, John Little,	Middlesex Co.,	Granton.
89	do	do	do do
90	do	do	do do
91	Little's No. 16,	do	do do
92	do	do	do do
93	Edgar Queen,	do	do do
94	Lovett's Early,	do	do do
95	Auburn,	do	do do
96	O. B. Curtiss,	do	do do
97	Barton's Eclipse,	do	do do
98	Woolverton,	do	do do
99	Saunders,	do	do do
100	Gaudy,	do	do do
101	Ivanhoe,	do	do do
102	Shaw,	do	do do
103	Jessie,	do	do do
104	Beder Wood,	do	do do
105	Haverland,	do	do do
106	Bubach No. 5,	do	do do
107	Woolverton,	do	do do
108	do	do	do do
109	Townsend's Seedling, John Little	Middlesex Co.,	Granton.
110	Great Pacific,	do	do do
111	Lady Rush,	do	do do
112	Grenville,	do	do do
113	Boynton,	do	do do
114	Louise,	do	do do
115	Crescent,	do	do do
116	Woolverton,	do	do do
117	Enhance,	do	do do
118	Sharpless,	do	do do

119
120
121
122
123
124
125
126
127
128
129

1 F
2
3 E
4 C
5
6
7
8
9
10
11 C
12 K
13 B
14 Y
15 M
16 B
17 G
18 N
19 M
20
21
22
23
24
25
26
27 G
28
29
30
31
32
33 B
34
35 G
36
37 B
38 B
39 B
40
41 N
42
43 Y
44
45 N
46
47
48
49
50
51
52
53
54
55 Gr
56

119	Mrs. Garfield,	John Little, Middlesex Co.,	Granton.
120	Williams,	do	do
121	London's Seedling,	do	do
122	Princess,	do	do
123	London's Seedling,	do	do
124	Dominion,	Ira E. Vanduzen, S. Wentworth,	Winona.
125	Sharpless,	do	do
126	Williams Seedling,	do	do
127	Michel's Early,	do	do
128	Sharpless, Gethen Bros.,		Lincoln, Grimsby.
129	Bubach, Miss Smith,		do

CHERRIES.

1	P. H. Gamble, Lincoln Co.,	Grimsby.
2	do	do
3	Early Richmond, James Sinclair,	Essex Co., Windsor.
4	Governor Wood, Mrs. McGlasham,	do
5	do	B. R. Nelles, Lincoln Co., Grimsby.
6	do	do
7	do	Aaron Culp, do Jordan Station.
8	do	do do do
9	do	do do do
10	do	do do do
11	Cae's Transparent, L. Woolverton,	Lincoln Co., Grimsby.
12	Knight's Early Black,	do do
13	Black Tartarian,	do do
14	Yellow Spanish,	do do
15	Mazzard,	do do
16	Black Eagle,	do do
17	Great Bigarreau,	do do
18	Napoleon Bigarreau,	do do
19	Monstreuse de Mezel, B. R. Nelles,	do do
20	do	do do
21	do	do do
22	do	do do
23	do	do do
24	do	do do
25	do	do do
26	do	do do
27	Governor Wood, Solomon High,	do Jordan.
28	do	do do
29	do	do do
30	do	Peter Linnerman, do do
31	do	do do do
32	do	do do do
33	Black Tartarian, Benj. Pyett,	do Grimsby.
34	do	A. M. Smith, do St. Catharines.
35	Governor Wood, Albert Pay,	do do
36	do	do do
37	Black Hart, L. Woolverton,	do Grimsby.
38	Black Heart,	do do
39	Black Ox Heart, William Neal,	do do
40	do	B. R. Nelles, do do
41	Napoleon Bigarreau,	do do do
42	do	do do do
43	Yellow Marilla, William Fitch,	do do do
44	do	do do do
45	Napoleon Bigarreau, B. R. Nelles,	do do do
46	do	do do do
47	do	do do do
48	do	do do do
49	do	John Hewitt, do do
50	do	do do do
51	do	do do do
52	do	do do do
53	do	do do do
54	do	do do do
55	Great Bigarreau, T. H. Laidman,	do do do
56	do	do do do

57	Napoleon Bigarreau,	John Hewitt,	Lincoln Co.,	Grimsby.
58	do	do	do	do
59	do	D. VanDuzer,	do	do
60	English Ox Heart,	Sardis Smith,	do	do
61	do	do	do	do
62	Common Red,	F. G. H. Pattison,	do	do
63	do	do	do	do
64	do	William Fitch,	do	do
65	do	do	do	do
66	do	do	do	do
67	do	do	do	do
68	Napoleon Bigarreau,	W. Riordan (Dum)	do	St. Catharines.
69	Early Richmond,	John Hewitt,	do	Grimsby.
70	do	do	do	do
71	do	do	do	do
72	do	do	do	do
73	do	do	do	do
74	do	do	do	do
75	Bigarreau,	B. R. Nelles,	do	do
76	do	do	do	do
77	do	do	do	do
78	do	do	do	do
79	Black Cherry,	Stanley Muir,	do	do
80	do	do	do	do
81	Red and White,	A. M. Smith,	do	St. Catharines.
82	Black,	do	do	do
83	Yellow,	do	do	do
84	do	do	do	do
85	Black Ox Heart,	do	do	do

CURRENTS.

1	White Grape,	N. Clinton,	Essex Co.,	Windsor.
2	Red Cherry,	L. Wolverton,	Lincoln Co.,	Grimsby.
3	Red Fay's,	do	do	do
4	do	do	do	do
5	Red Cherry,	do	do	do
6	Red Fay's,	do	do	do
7	White Grape,	do	do	do
8	do	do	do	do
9	do	do	do	do
10	Red Fay's,	do	do	do
11	White Grape,	do	do	do
12	Red Raby Castle,	Geo. C. Pettit,	do	do
13	Red Cherry,	do	do	do
14	do	do	do	do
15	do	do	do	do
16	do	do	do	do
17	do	do	do	do
18	Red Fay's	do	do	do
19	Red Raby Castle	do	do	do
20	do	do	do	do
21	Red Cherry,	B. R. Nelles,	do	do
22	do	do	do	do
23	Red Common	do	do	do
24	do	do	do	do
25	Red Cherry,	Thos. R. Merritt (Richardson)	St. Catharines.	do
26	do	do	do	do
27	do	do	do	do
28	do	do	do	do
29	do	do	do	do
30	do	do	do	do
31	White Grape,	do	do	do
32	Red Cherry,	W. Riordan (Dunn)	Lincoln Co.,	St. Catharines.
33	do	do	do	do
34	Red Fay's,	L. Wolverton,	do	Grimsby.
35	do	do	do	do
36	Red Cherry,	George Van Dyke,	do	do
37	do	Geo. C. Pettit,	do	do
38	do	do	do	do

39 W
40
41 R
42
43 W
44 R
45 R
46 R
47
48
49
50 C
51
52
53 R
54
55
56 R
57 W
58
59
60 B
61
62
63
64
65
66
67
68
69
70 R

1 W
2
3
4 In
5
6 Su
7
8 Cr
9
10 As
11 Cr
12 W
13
14
15 Do
16
17 Ho
18
19 In
20 Lo
21 Gi
22
23 Oc
24 On
25 Th
26 Cr
27 W
28 Lon
29
30 Blo
31 Du
32 Coi
33 Ind
34 Wh
35 Ind

89	White Grape,	Jesse D. Lawrence,	Lincoln Co.	Grimsby.
90	do	do	do	do
41	Red Cherry,	George Van Dyke,	do	do
42	do	do	do	do
43	White Grape,	Jesse D. Lawrence,	do	do
44	Red Cherry,	N. Clinton,	Essex Co.,	Windsor.
45	Red and White	do	Lincoln Co.,	Grimsby.
46	Red Cherry,	Jas. S. Randall,	do	do
47	do	do	do	do
48	do	do	do	do
49	do	do	do	do
50	Common Red,	do	do	do
51	do	do	do	do
52	do	do	do	do
53	Red Fay's,	W. S. Turner,	Stormont Co.,	Cornwall.
54	do	do	do	do
55	do	do	do	do
56	Red Cherry,	A. Terryberry,	Lincoln Co.,	Grimsby.
57	White Grape,	do	do	do
58	do	do	do	do
59	do	do	do	do
60	Black,	Carpenter Bros.,	South Wentworth,	Stoney Creek.
61	do	J. S. Randall,	Lincoln Co.,	Grimsby.
62	do	do	do	do
63	do	do	do	do
64	do	W. V. Hare,	do	do
65	do	do	do	do
66	do	do	do	do
67	do	do	do	do
68	do	do	do	do
69	do	do	do	do
70	Red Common,	Geo. R. Secor,	do	do

GOOSEBERRIES.

1	Whitesmith,	N. Clinton,	Essex Co.,	Windsor.
2	do	A. H. Pettit,	Lincoln Co.,	Grimsby.
3	do	W. Riordan (Dunn),	Lincoln Co.,	St. Catharines.
4	Industry,	do	do	do
5	do	do	do	do
6	Sulphur Queen,	do	do	do
7	do	do	do	do
8	Crown Rob,	do	do	do
9	do	do	do	do
10	Ashton Red	do	do	do
11	Crown Rob,	Thos. R. Merritt (Richardson),	Lincoln Co.,	St. Catharines.
12	Whitesmith,	do	do	do
13	do	do	do	do
14	do	R. Murgatroyd,	do	do
15	Downing,	do	do	Smithville.
16	do	do	do	do
17	Houghton,	John Deans,	do	do
18	do	do	do	do
19	Industry.	George Adams,	do	do
20	London.	A. Terryberry,	do	do
21	Gipsy Queen,	Adam Morton,	Peel Co.,	Brampton.
22	do	do	do	do
23	Ocean Wave,	do	do	do
24	One of them,	do	do	do
25	Thumper,	do	do	do
26	Crown Rob,	do	do	do
27	Whitesmith,	do	do	do
28	London,	do	do	do
29	do	do	do	do
30	Bloodhound,	do	do	do
31	Duke of Sutherland,	do	do	do
32	Coiner.	do	do	do
33	Industry,	T. H. Race,	Perth Co.,	Mitchell.
34	Whitesmith,	do	do	do
35	Industry,	do	do	do

36	Whitesmith,	T. H. Race,	Perth Co.,	Mitchell.
37	Downing,	W. Spera,	South Wentworth,	Stoney Creek.
38	do	do	do	do
39	Whitesmith,	T. H. Race,	Perth Co.,	Mitchell.
40	Golden Mildeproof,	John Carnie,	Brant Co.,	Paris.
41	London Seedling,	James Wilds,	South Wentworth,	Barton.
42	do	do	do	do
43	London,	do	do	do
44	do	do	do	do
45	Industry,	do	do	do
46	do	do	do	do
47	London,	do	do	do
48	No name,	do	do	do
49	do	do	do	do
50	do	do	do	do
51	do	do	do	do
52	do	do	do	do
53	do	do	do	do
54	Houghton,	do	do	do
55	No name,	do	do	do
56	do	do	do	do
57	Downing,	John Osborne,	Stormont Co.,	Cornwall.
58	do	do	do	do
59	do	do	do	do
60	do	do	do	do
61	Winnom's King and Industry,	John Beattie,	Lincoln Co.,	St. Catharines.
62	Downing,	R. M. Croft,	South Wentworth Co.,	Stoney Creek.
63	Industry and Golden Ball,	T. R. Merritt,	Lincoln Co.,	St. Catharines.
64	Golden Ball,	do	do	do
65	do	do	do	do
66	Downing,	Thomas Beall,	Victoria Co.,	Lindsay.
67	do	do	do	do
68	do	do	do	do
69	Whitesmith,	do	do	do
70	do	do	do	do
71	do	do	do	do
72	Pearl,	do	do	do
73	do	do	do	do
74	do	do	do	do
75	Pearl Single Branch,	A. M. Smith,	Lincoln Co.,	St. Catharines.

RASPBERRIES.

1	Black,	N. Clinton,	Essex Co.,	Windsor.
2	Marlboro',	L. A. Pettit,	Lincoln Co.,	Grimpsy.
3	do	L. Woolverton,	do	do
4	do	Geo. C. Pettit,	do	do
5	do	J. A. Pettit,	do	do
6	do	Geo. C. Pettit,	do	do
7	do	L. Woolverton,	do	do
8	Highland Hardy,	John Hewitt,	Lincoln Co.	Grimpsy.
9	do	do	do	do
10	do	do	do	do
11	Cuthbert,	W. N. Pettit,	do	do
12	do	do	do	do
13	do	Geo. C. Pettit,	do	do
14	do	do	do	do
15	do	do	do	do
16	do	John Hewitt,	do	do
17	do	do	do	do
18	do	do	do	do
19	do	Geo. C. Pettit,	do	do
20	do	do	do	do
21	Schaefer's Colossal,	George Adams,	do	Smithville.
22	Brandywine,	L. Woolverton,	do	Grimpsy.
23	Gregg,	A. F. Stevenson,	Haldimand Co.,	Cayuga.
24	Schaefer's Colossal,	George Adams,	Lincoln Co.,	Smithville.
25	Gregg,	do	do	do
26	Nemaha,	do	do	do
27	Thanconia,	do	do	do

28 Ca
29
30 Gol
31 Gol
32 Cut
33 Cut
34 Bla
35 Cut
36
37
38
39 Gol
40 Gre
41 Col
42
43
44
45 Gol
46 Cut
47
48
49
50 Gi

1 Ki
2
3
4
5
6
7
8
9
10
11 De
12 Ki
13
14
15
16
17
18
19
20
21
22
23
24 Sn
25 Ta
26
27

1 Hi
2 Ale
3
4 Ber
5 Ale
6
7 Fa
8 Fa
9 Ale
10 Ber
11 W
12 Ale
13

28	Caroline, George Adams, Lincoln Co.,	Smithville.
29	do	do do
30	Golden Queen, J. A. Pettit,	do Grimsby.
31	Golden Queen, J. A. Pettit, Lincoln Co.,	Grimsby.
32	Cuthbert,	do do
33	Cuthbert,	do do
34	Black, A. M. Smith,	do St. Catharines.
35	Cuthbert, F. G. H. Pattison,	do Grimsby.
36	do	do do
37	do	Isaac Geddes, S. Wentworth Co., Winona.
38	do	do do
39	Golden Queen, Carpenter Bros.,	do Stoney Creek.
40	Gregg, W. Spera,	do do
41	Cole's Prolific, R. D. Cole, Lincoln Co.,	Port Dalhousie.
42	do	do do
43	do	do do
44	do	do do
45	Golden Queen, L. Woolverton,	do Grimsby.
46	Cuthbert,	do do
47	do	W. Lionnerman, do Beausville.
48	do Oct. 13, 1892, Robert Teeter,	do Grimsby.
49	do	A. E. Kydd, Norfolk Co., Simcoe.
50	Giant Black, A. M. Smith, Lincoln Co.,	St. Catharines.

BLACKBERRIES.

1	Kittatiny, Murray Pettit, S. Wentworth Co.,	Winona.
2	do	do do
3	do	do do
4	do	Isaac Goddes, do do
5	do	do do
6	do	do do
7	do	Geo. Udell, Lincoln County, Grimsby.
8	do	Gethen Bros., do do
9	do	do do
10	do	do do
11	Dewberry, Samuel Whittaker,	do do
12	Kittatiny, George Udell,	do do
13	do	do do
14	do	Murray Pettit, S. Wentworth Co., Winona.
15	do	do do
16	do	do do
17	do	A. H. Pettit, Lincoln County, Grimsby.
18	do	Murray Pettit, S. Wentworth Co., Winona.
19	do	do do
20	do	A. H. Pettit, Lincoln Co., Grimsby.
21	do	J. R. Pettit, do do
22	do	do do
23	do	do do
24	Snider, L. C. Hall, Ontario Co.,	Oshawa.
25	Taylor's Prolific, do	do do
26	do	do do
27	do	do do

PEACHES.

1	High's Early, John Broderick, Lincoln Co.,	St. Catharines.
2	Alexander, VanDuzer & Son,	do Grimsby,
3	do	John Broderick, do St. Catharines.
4	Beatrice, Mark Whaley,	Essex Co., Olinda.
5	Alexander, E. Tyhurst,	do Leamington.
6	do	VanDuzer & Son., Lincoln Co., Grimsby.
7	Early Rivers, John Mitchell, Essex Co.,	Leamington.
8	Early Canada, C. M. Housberger, Lincoln Co.,	Jordan.
9	Alexander, Samuel Whittaker,	do Grimsby.
10	Beatrice, A. H. Pettit,	do do
11	Waterloo, C. M. Housberger,	do Jordan.
12	Alexander, W. Kottmier, Lincoln Co.,	St. Catharines.
13	do	do do

14	High's Early, W. Kottmier, Lincoln Co., St. Catharines.
15	Hale's Early, do do do
16	Alexander, do do do
17	Early Rivers, E. Tyhurst, Essex Co., Leamington.
18	Alexander, J. H. Whittaker, Lincoln Co., Grimsby.
19	do Samuel Whittaker do do
20	Early Rivers, E. Tyhurst, Essex Co., Leamington.
21	Early Rivers, do do do
22	Hale's Early, do do do
23	Early Rivers, VanDuzer & Son, Lincoln Co., Grimsby.
24	do do do do
25	do do do do
26	do do do do
27	do do do do
28	do John Broderick, Lincoln Co., St. Catharines.
29	Richmond, do do do
30	Early Louise, do do do
31	Early Rivers, Samuel Whittaker, Lincoln Co., Grimsby.
32	do do do do
33	do E. J. Woolverton, do do do
34	do do do do
35	Louise, W. Kottmier, Lincoln Co., St. Catharines.
36	do do do do
37	do do do do
38	Early Rivers, VanDuzer & Son, do Grimsby.
39	do E. J. Woolverton, do do do
40	do W. Kottmier, do St. Catharines.
41	do do do do
42	Early Crawford, John Mitchell, Essex Co., Leamington.
43	do E. Tyhurst, do do do
44	George IV., do do do
45	Mountain Rose, John Broderick, Lincoln Co., St. Catharines.
46	Early Crawford, C. M. Housberger, do Jordan.
47	Yellow Alberge, E. Tyhurst, Essex Co., Leamington.
48	Early Crawford, John Broderick, Lincoln Co., St. Catharines.
49	Wheatland, do do do
50	Tyhurst's Crawford Seedling, E. Tyhurst, Essex Co., Leamington.
51	Oldinixon, do do do
52	Barnard, C. M. Housberger, Lincoln Co., Jordan.
53	Wheatland, Lewis Haynes, do St. Catharines.
54	Late Crawford, Edward Tyhurst, Essex Co., Leamington.
55	do Lewis Haynes, Lincoln Co., St. Catharines.
56	Barnard, VanDuzer & Son, do Grimsby.
57	Seedling, George Carlisle, do St. Catharines.
58	Early Crawford, John McGilvray, Grey Co., Meaford.
59	Carlisle Seedling, George Carlisle, Lincoln Co., St. Catharines.
60	Early Crawford, John Cox, Grey Co., Owen Sound.
61	Late Crawford, Elizabeth Comley, Grey Co., Clarksburg.
62	Seedling, J. S. McKinnon, Bruce Co., Paisley.
63	Blood Peach, E. Tyhurst, Essex Co., Leamington.
64	do do do do
65	Peach Seedling, James Tolton, Bruce Co., Walkerton.
66	Continental, A. M. Smith, Lincoln Co., St. Catharines.
67	Late Crawford, W. A. Huntsberry, Lincoln Co., Jordan Station.
68	Kensington, do do do
69	Late Crawford, do do do
70	do do do do
71	Centennial, C. M. Housberger, do do do
72	Late Crawford, J. H. Broderick, do St. Catharines.
73	do do do do
74	Smock, E. Tyhurst, Essex Co., Leamington.
75	do do do do
76	do I. B. Walker, Lincoln Co., Grimsby.
77	do do do do
78	Steven's Rarerie, A. M. Smith, Lincoln Co., St. Catharines.
79	Smock, E. J. Woolverton, do Grimsby.
80	do J. H. Willson, S. Wentworth Co., Winona.
81	do do do do
82	Kensington, S. A. Nelles, Lincoln Co., Grimsby.
83	Smock, E. Tyhurst, Essex Co., Leamington.

PLUMS.

	Weaver, F. G. H. Pattison, Lincoln Co., Grimsby.		
2	Ogan, S. Parnell,	Lincoln Co., St. Catharines.	
3	Pornnes Simoni, A. M. Smith,	do	
4	do	do	do
5	Carduc,	do	do
6	Botan or Abundance, A. M. Smith,	Lincoln Co., St. Catharines	
7	Orleans, William Miller,	Essex Co., Cottam	
8	Botan, A. M. Smith,	Lincoln Co., St. Catharines.	
9	Bradshaw, G. W. Cline,	Lincoln Co., Winona.	
10	Washington	do	do
11	do	do	do
12	Victoria,	do	do
13	Peter's Gage,	do	do
14	Duane's Purple,	do	do
15	Prince's Yellow,	do	do
16	Peach,	do	do
17	Duane's Purple,	do	do
18	Peach,	do	do
19	Dennison's Superb,	do	do
20	Bradshaw,	do	do
21	No. 1,	do	do
22	Victoria,	do	do
23	No. 2,	do	do
24	Moyer's Seedling,	do	do
25	do	do	do
26	Peter's Gage,	do	do
27	No. 1,	do	do
28	Peach,	do	do
29	Niagara,	do	do
30	do	do	do
31	do	do	do
32	do	do	do
33	Canada Orleans,	do	do
34	do	do	do
35	Collection.	do	do
36	Peach,	do	do
37	Washington, Jas. A. McSloy,	Lincoln Co., St. Catharines.	
38	Bradshaw, L. Woolverton,	Lincoln Co., Grimsby.	
39	do	do	do
40	Lombard, George R. Secor,	do	
41	do	do	do
42	do	do	do
43	Moore's Arctic, A. M. Smith,	Lincoln Co., St. Catharines.	
44	Carduc,	do	do
45	Washington,	do	do
46	do	do	do
47	Imperial Gage,	do	do
48	Kingston, G. C. Caston,	Simcoe Co., Craighurst.	
49	Quackenloss, Benj. Moore,	Gray Co., Heathcote.	
50	Bradshaw,	do	do
51	Yellow Egg,	do	do
52	Glas. Seedling,	do	do
53	Yellow Egg,	do	do
54	General Hand, R. M. Brown,	Gray Co., Clarksburg.	
55	Columbia,	do	do
56	Arctic	do	do
57	Yellow Egg,	do	do
58	Bradshaw,	do	do
59	Glass Seedling,	do	do
60	Seedling from Smith's Orleans,	do	
61	Green Gage,	do	do
62	Yellow Gage,	do	do
63	Evelyn, Richard Trotter,	Grey Co., Owen Sound.	
64	Washington,	do	do
65	Lady Grey,	do	do
66	Prince of Wales,	do	do
67	do	do	do
68	Mr. Laughlin,	do	do
	2 (F.)		

69	Golden Gage, Richard Trotter, Grey Co., Owen Sound.		
70	Bradshaw, do do		
71	Washington, Manning Brown, Simcoe Co., Collingwood.		
72	Bradshaw, do do		
73	Kingston, Thomas Gillson, do		
74	Imperial Gage, George W. Cline, Lincoln Co., Winona.		
75	Monroe Egg, do do		
76	Yellow Egg, do do		
77	Columbia, do do		
78	Glass Seedling, do do		
79	General Hand, do do		
80	Lawson's Golden Gage, George W. Cline, Lincoln Co., Winona.		
81	Canada Orleans, do do		
82	do do do		
83	do do do		
84	Jefferson, do do		
85	German Prune, do do		
86	Duane's Purple, do do		
87	Glass Seedling, do do		
88	Bradshaw, Joseph Dibb, Grey Co., Clarksburg.		
89	Washington, do do		
90	Pond's Seedling, Mark Stott, Lincoln Co., St. Catharines.		
91	Guit, James Hall, Stormont Co., Cornwall.		
92	do do do		
93	Glass Seedling, Lorne Book, Lincoln Co., Grimsby.		
94	Lombard, William Fitch, do		
95	Washington, James Stewart, Grey Co., Meaford.		
96	Pond's Seedling, A. M. Smith, Lincoln Co., St. Catharines.		
97	Glass Seedling do do		
98	Damson, William Fitch, Lincoln Co., Grimsby.		
99	Guthrie's Apricot, Richard Trotter, Grey Co., Owen Sound.		
100	Webster's Gage, do do		
101	Orange Egg, do do		
102	Peter's Yellow Gage, do do		
103	Bleecker's Gage, do do		
104	Imperial Gage, do do		
105	Prince of Wales, do do		
106	Duane's Purple, do do		
107	Glass Seedling, do do		
108	Columbia, do do		
109	Prince of Engelbert, do do		
110	Lord Derby, do do		
111	Lombard, German Findlay, Essex Co., Walkerville.		
112	Yellow Egg, Benjamin Moore, Grey Co., Thornbury.		
113	Pond's Seedling, James Campbell, Grey Co., Thornbury.		
114	Pond's Seedling, Richard Trotter, Grey Co., Owen Sound.		
115	Fellenburg, do do		
116	Yellow Egg, do do		
117	Lombard, do do		
118	Damson, do do		
119	Native Plum, do do		
120	Pond's Seedling, James Tolton, Bruce Co., Walkerton.		
121	Glass Seedling, do do		
122	Weaver, James Hirst, Stormont Co., Cornwall.		
123	Pond's Seedling, E. Y. Godfrey, Grey Co., Meaford.		
124	Lombard, Richard Trotter, Grey Co., Owen Sound.		
125	Skipper's Pride, do do		
126	Yellow Egg, Thomas Plunkett, Grey Co., Meaford.		
127	Yellow Egg, Amos Taite, do		
128	Pond's Seedling, James Stewart, do		
129	Stewart, do do		
130	La Hermosa, Richard Trotter, Grey Co., Owen Sound.		
131	Coe's Golden Drop, do do		
132	Beauty of Owen Sound, do do		
133	Bingham, do do		
134	Coe's Golden Drop, Rev. L. H. Kirkby, Simcoe Co., Collingwood		
135	General Hand, do do		
136	Magnum Bonum, do do		
137	Pond's Seedling, do do		

1 Apric
2 do
3 do
4 do

1 Beau
2 do
3 Osbor
4 Jack
5 Benn
6 Seedl
7
8

9 Beau

10

11

12

13

14

15 Clapp

16

17 Bell,

18 Clapp

19

20 Eliza

21 do

22 Tyson

23 do

24 do

25 do

26 Dearl

27 Rosti

28 do

29 Flem

30 do

31 do

32 do

33 Clapp

34 Petit

35 Souv

36 Clapp

37 Souv

38 Louis

39

40 Barth

41 Clapp

42

43

44

45 Barth

46 Seedl

47 Clapp

48 Marg

49 Chan

50 Josep

51 Trion

52 Lecon

53 Ferti

54 Secre

55 Reins

56 Flem

57 Barth

58 How

59 Broc

60 Anar

61 Flem

APRICOTS.

1	Apricots, Jacob Hill, Lincoln Co., St. Catharines.
2	do do do do
3	do do do do
4	do do do do

PEAS.

1	Beuce Giffard, Murray Pettit, South Wentworth Co., Winona.
2	do D'Ete, John Broderick, Lincoln Co., St. Catharines.
3	Osborne, Peter Liennerman, do Jordan.
4	Jackson, do do do
5	Beuce Giffard, Murray Pettit, South Wentworth Co., Winona.
6	Seedling (Harvest), A. G. Pettit, Lincoln Co., Grimsby.
7	do do do do
8	do do do do
9	Beuce Giffard, Murray Pettit, South Wentworth Co., Winona.
10	do do do do
11	do do do do
12	do do do do
13	do do do do
14	do do do do
15	Clapp's Favorite, Robert Hooper, Essex Co., Cotton.
16	do William Miller, do do
17	Bell, Henry Wills, Haldimand Co., Winger.
18	Clapp's Favorite, L. Woolverton, Lincoln Co., Grimsby.
19	do do do do
20	Elizabeth, do do do do
21	do do do do
22	Tyson, do do do do
23	do Van Duzer & Son, do do do
24	do do do do
25	do do do do
26	Dearborn's Seedling, L. Woolverton, do do do
27	Rostiezer, do do do do
28	do do do do
29	Flemish Beauty, Luke Montreuil, Essex Co., Walkerville.
30	do do do do
31	do do do do
32	do do do do
33	Clapp's Favorite, D. Monre, do Windsor.
34	Petite Marguerite, L. Woolverton, Lincoln Co., Grimsby.
35	Souvenir du Congress, E. McKay, Kent Co., Ridgetown.
36	Clapp's Favorite, Salem Ruth, do do do
37	Souvenir du Congress, Louis Hagar, Lincoln Co., Grimsby.
38	Louise Bonne, S. G. Reid, do do do
39	do do do do
40	Bartlett, G. Brown, Kent Co., Ridgetown.
41	Clapp's Favorite, R. Trotter, Grey Co., Owen Sound.
42	do I. D. Stewart, Perth Co., Russeldale.
43	do do do do
44	do John Mitchell, Essex Co., Leamington.
45	Bartlett, do do do
46	Seedling, Dr. W. C. Millward, Lincoln Co., Grimsby.
47	Clapp's Favorite, Oscar Boden, Grey Co., Meaford.
48	Marguerite de Morillat, J. D. Roberts, Northumberland Co., Cobourg.
49	Chamontal, do do do
50	Josephine de Malines, L. Woolverton, Lincoln Co., Grimsby.
51	Triomphe de Vienne, do do do do
52	Lecoute, do do do do
53	Fertility, Morris, Stone & Wellington, Welland Co., Welland.
54	Secretaire Marechal, Morris, Stone & Wellington, Lincoln Co., Grimsby.
55	Reine des Vergere, do do do
56	Flemish Beauty, James Campbell, Grey Co., Thornbury.
57	Bartlett, N. J. Clinton, Essex Co., Windsor.
58	Howell, M. G. Hay, Kent Co., Ridgetown.
59	Brockworth Park, A. H. Pettit, Lincoln Co., Grimsby.
60	Ananas E'Ete, James Tolton, Bruce Co., Walkerton.
61	Flemish Beauty, do do do

62	Seckel, S. A. Nelles, Lincoln Co., Grimsby.			
63	Bartlett, L. Woolverton, do do			
64	Belle Laverative, L. Woolverton, Lincoln Co., Grimsby.			
65	do do do do			
66	Bartlett, <i>See</i> E. Fisher, Halton Co., Freeman.			
67	Mikado, Morris, Stone & Wellington, Welland Co., Welland.			
68	Winter Jonah, do do do do			
69	Leger, do do do do			
70	Josephine des Malines, do do do do			
71	President Paynor Quartier, Morris, Stone & Wellington, Welland Co., Welland.			
72	Souvenir de l'Espere, do do do do			
73	Lawrence, Agricultural Society, Lincoln Co., St. Catharines.			
74	Beune Bosc, do do do do			
75	do do do do do do			
76	Doyenne du Comice, do do do do			
77	Beune Superfin, do do do do			
78	Sheldon, T. R. Merritt, do do do do			
79	Beune Hardy, Agricultural Society, do do do do			
80	Howell, do do do do			
81	Souvenir du Congress, do do do do			
82	Beune Clairgeau, do do do do			
83	Doyenne Boussock, do do do do			
84	Pease's Dutch, Morris, Stone & Wellington, Welland Co., Welland.			
85	Beune Chaudy, do do do do			
86	Anne de Bretagne, do do do do			
87	Belle Williamus, do do do do			
88	Louis Clappe, do do do do			
89	Bartlett, Van Duzer & Son, Lincoln Co., Grimsby.			
90	Ananas D'Ete, James D. Stewart, Perth Co., Russelldale.			
91	do do do do			
92	Sheldon, Jas. Vanalstine, Kent Co., Ridgetown.			
93	Beune Clairgeau, Henry Porter, Kent Co., Ridgetown.			
94	Sheldon, S. Whittaker, Lincoln Co., Grimsby.			
95	Bartlett, John Hewitt, do do do do			
96	do do do do do do			
97	Sheldon, Samuel Whittaker, do do do do			
98	Louise Bonne de Jersey, Rich. Trotter, Grey Co., Owen Sound.			
99	Beune Clairgeau, Titterton & Pay, Lincoln Co., St. Catharines.			
100	Lawrence, do do do do			
101	White Doyenne, do do do do			
102	Le Coute, do do do do			
103	De Tongres, do do do do			
104	Mt. Vernon, do do do do			
105	Beune d'Anjon, do do do do			
106	Beune Gris d'Hiver, do do do do			
107	do do do do do do			
108	Doyenne du Comice, do do do do			
109	Duffum, do do do do			
110	Beune Bosc, do do do do			
111	Duchess d'Angonleme, German Findlay, Essex Co., Walkerville.			
112	Fertility, I. D. Roberts, Northumberland Co., Cobourg.			
113	No name, do do do do			
114	Therese, do do do do			
115	Beune Chaudy, do do do do			
116	Wilmott, do do do do			
117	Loe, do do do do			
118	Beune Baltet Perth, I. D. Roberts, Northumberland Co., Cobourg.			
119	Sheldon, E. R. Reas, Lincoln Co., Grimsby.			
120	Duchess d'Angonleme, General M. Culp, Lincoln Co., Grimsby.			
121	do do do do do do			
122	No name, J. D. Roberts, Northumberland Co., Cobourg.			
123	McLaughlin, Titterton & Pay, Lincoln Co., St. Catharines.			
124	Paradise d'Antomme, do do do do			
125	Seedling, do do do do			
126	Beune d'Anjon, Murray Pettit, S. Wentworth Co., Winona.			
127	Doyenne Boussock, E. J. Woolverton, Lincoln Co., Grimsby.			
128	Duchess d'Angonleme, J. S. Freeman, Halton Co., Freeman.			
129	Le Coute, Stanley Muir, Lincoln Co., Grimsby.			
130	do do do do			

131	Bel
132	Duc
133	No
134	Lou
135	Vic
136	Duc
137	Fle
138	Pre
139	Duc
140	No
141	Der
142	Kir
143	She
144	Le
145	Kei
146	Pre
147	Kei
148	Beu
149	Beu
150	Kei
151	d
152	Duc
153	Dr.
154	Pre
155	Cal
156	d
157	Jos
158	See
159	d
160	Le
161	Col
162	Le
163	Ho
164	Kie
165	d
166	Duc
167	Jos
168	Pre
169	Wh
170	Le
171	Vic
172	Kie
173	Beu
174	Kei
175	d
176	Col
177	Duc
178	Col
179	Jos
180	See
181	Pre
182	Kie
183	Duc
184	Col
185	d
186	Pou
187	Kie
188	d
189	Lav
1	Jan
2	Cott
3	Dra
4	Mo
5	Moy
6	Mo
7	Pear
8	Lad

- 181 Belle de Beaufort, E. J. Woolverton, Lincoln Co., Grimsby.
 192 Duchess d'Angonleme, Richard Pearce, Brant Co., Brantford.
 193 No name, Algoma Co., Sault Ste. Marie.
 194 Louise Bonne de Jersey, Saml. A. Nelles, Lincoln Co., Grimsby.
 195 Vicar Winkfield, Titterington & Pay, do St. Catharines.
 196 Duchess d'Angonleme, Duvall & Clarke, do Grimsby.
 197 Flemish Beauty, Jas. Drysdale, Simcoe Co., Hillsdale.
 198 President Dronard, Jno. W. Duvall, Lincoln Co., Grimsby.
 199 Duchess d'Angonleme, John Hewitt, do do
 200 No name, Titterington & Pay, do St. Catharines.
 201 Dempsey, P. C. Dempsey & Son, Prince Edward Co., Trenton.
 202 King Sissing, Titterington & Pay, Lincoln Co., St. Catharines.
 203 Sheldon, A. H. Pettit, Lincoln Co., Grimsby
 204 Le Couc, do do do
 205 Keiffer, I. Armstrong do do
 206 President, Dr. Millward, do do
 207 Keiffer, D. Logan, Kent Co., Ridgetown.
 208 Beune' d'Anjon, J. W. Willson, Kent Co., Ridgetown.
 209 Beune' Clairgeau, N. J. Clinton, Essex Co., Windsor.
 210 Keiffer, German Findlay, do Walkerville.
 211 do do do do
 212 Duchess d'Angonleme, James Gilson, Grey Co., Meaford.
 213 Dr. Reeder, I. D. Roberts, Northumberland Co., Cobourg.
 214 President d'Estaintot, I. D. Roberts, Northumberland Co. Cobourg.
 215 Calixte Mignot do do
 216 do do do do
 217 Josephine de Malines do do
 218 Seedling, Tree, 100 years old, S. P. Stipe, S. Wentworth Co., Bartonville.
 219 do do do do
 220 Le Couc, Morris, Stone & Wellington, Welland Co., Welland.
 221 Collection, John Lauder, York Co., Deerpark.
 222 Le Couc, Morris, Stone & Wellington, Welland Co., Welland.
 223 Howell, Titterington & Pay, Lincoln Co., St. Catharines.
 224 Kieffer, do do
 225 do do do do
 226 Duchess & Beune d'Anjon, W. F. Carpenter, Norfolk Co., Port Dover.
 227 Josephine de Malines, E. J. Woolverton, Lincoln Co., Grimsby.
 228 President Dronard, do do do
 229 White Doyenne', Titterington & Pay do St. Catharines.
 230 Le Couc, Saml. G. Reid, do Grimsby.
 231 Vicar of Winkfield, Louis Hagar, do do
 232 Kieffer, Henry Hill, Elgin Co., West Lorne.
 233 Beune Clairgeau, Henry Hill, Elgin Co., West Lorne.
 234 Keiffer, Murray Pettit, S. Wentworth Co., Winona.
 235 do do do do
 236 Collection, German Findlay, Essex Co., Walkerville.
 237 Duchess d'Angonleme, W. J. Carpenter, Norfolk Co., Port Dover.
 238 Collection.
 239 Josephine de Malines, W. A. H. Duff, S. Wentworth Co., Bartonville.
 240 Seedling tree, 100 years old, S. P. Stripe, do do
 241 President Dronard, E. J. Woolverton, Lincoln Co., Grimsby.
 242 Kieffer, Murray Pettit, S. Wentworth, Winona.
 243 Duchess d'Angonleme.
 244 Collection, John Lauder, York Co., Deer Park.
 245 do J. Smith, Lincoln Co., Grimsby.
 246 Pound or Winter Bell, David Cox, Huron Co., Porter Hill.
 247 Kieffer Stanley Muir, Lincoln Co., Grimsby.
 248 do 1 pear, Morris, Stone & Wellington, Welland Co., Welland.
 249 Lawrence, E. J. Woolverton, Lincoln Co., Grimsby.

GRAPES.

- 1 Janesville, L. Woolverton, Lincoln Co., Grimsby.
 2 Cottage, Murray Pettit, S. Wentworth Co., Winona.
 3 Dracut Amber, do do
 4 Moore's Early, do do
 5 Moyer do do
 6 Moore's Diamond, Murray Pettit, do do
 7 Pearl do do
 8 Lady do do

9	Marion, Murray Pettit, S. Wentworth Co., Winona.		
10	Champion	do	do
11	Pearl	do	do
12	Champion	do	do
13	do	do	do
14	Telegraph, L. Woolverton, Lincoln Co., Grimsby.		
15	Pearl,	do	do
16	Marion	do	do
17	do	do	do
18	Champion, A. H. Pettit,	do	do
19	do W. H. Pettit,	do	do
20	Moore's Early, J. R. Pettit	do	do
21	do	do	do
22	Wyoming Red, L. Woolverton,	do	do
23	Early Victor,	do	do
24	Dracut Amber,	do	do
25	Roger's No. 30,	do	do
26	Roger's No. 28,	do	do
27	Cottage,	do	do
28	Bacchus	do	do
29	do	do	do
30	Pearl	do	do
31	Rentz, Murray Pettit, S. Wentworth Co., Winona.		
32	Early Victor, Murray Pettit,	do	do
33	Jessica	do	do
34	Wyoming Red,	do	do
35	Emmelan,	do	do
36	Hartford Proflic,	do	do
37	Worden, J. R. Pettit, Lincoln Co., Grimsby.		
38	Niagara, B. Gott, Lambton Co., Arkona.		
39	Hartford, do	do	do
40	Walter, do	do	do
41	Worden, J. R. Pettit, Lincoln Co., Grimsby.		
42	Moore's Diamond, Morris, Stone & Wellington, Welland Co., Welland.		
43	Delaware, A. H. Pettit, Lincoln Co., Grimsby.		
44	Niagara, do	do	do
45	do Beverly Book,	do	do
46	do	do	do
47	Delaware, B. Gott, Lambton Co., Arkona.		
48	Walter, do	do	do
49	do Murray Pettitt, S. Wentworth Co., Winona.		
50	Niagara, J. R. Pettit, Lincoln Co., Grimsby.		
51	Brighton, B. Gott, Lambton Co., Arkona.		
52	Roger's No. 44, J. R. Pettit, Lincoln Co., Grimsby.		
53	Vergennes, B. Gott, Lambton Co., Arkona.		
54	Brighton & Delaware, R. Gray, Essex Co., Sandwich.		
55	Prentiss, B. Gott, Lambton Co., Arkona.		
56	No name, Murray Pettit, S. Wentworth Co., Winona.		
57	do	do	do
58	Roger's 4 & 15 & Eaton, Saml. Lee, Brant Co., Paris.		
59	Roger's Collection, J. R. Pettit, S. Wentworth Co., Winona.		
60	Augusta Concord Seedling, J. H. Broderick, Lincoln Co., St. Catharines		
61	Elvira, L. Woolverton.		Lincoln Co., Grimsby.
62	Delaware,	do	do
63	Noah,	do	do
64	Transparent,	do	do
65	Jefferson,	do	do
66	Amber Queen,	do	do
67	Eldorado,	do	do
68	Roger's No. 89,	do	do
69	Perkins & Mary, L. Woolverton,	do	do
70	Merrinac,	do	do
71	Niagara, Stanley Muir,	do	do
72	Niagara & Vergennes, Stanley Muir,	do	do
73	Vergennes,	do	do
74	Brighton,	do	do
75	Vergennes,	do	do
76	Ann Arbor, E. J. Woolverton,	do	do
77	Perkins,	do	do

78 Co
79 De
80
81 Di
82 De
83 Ro
81 Co
85 Cl
86 Em
87 No
88 Isa
89 Nia
90 Del
91 Sale
92 Cat
98 Duc
91 Per
95 Sale
96 d
97 Jeff
98 Aga
99 Goe
100 Dela
101 d
102 Cata
103 Triu
104 Cata
105 Rog
106
107
108
109 Colle
110 Roge

1 Orang
2 do
3 do
4 do
5 do
6 do
7 do
8 Champ
9 Orange
10 Champ
11 do

1 Hyslop
2 do
3 do
4 do
5 do
6 do
7 No nam
8 do
9 Hyslop
10 Mareng
11 Collect
12 do
13 Hyslop,
14 General

1 Primate
2 do

- 78 Concord, W. H. Pettit, Lincoln Co., Grimsby.
 79 Delaware, do do
 80 do A. E. Sherrington, Bruce Co., Walkerton.
 81 Diawa, W. H. Pettit, Lincoln Co., Grimsby.
 82 Delaware, A. E. Sherrington, Bruce Co., Walkerton.
 83 Rogers 15, Agawam, Geo. C. Pettit, Lincoln Co., Grimsby.
 84 Concord, do do
 85 Clinton, Murray Pettit, S. Wentworth Co., Winona.
 86 Empire State, do do
 87 Noah, do do
 88 Isabella, do do
 89 Niagara, W. N. McLeod, Welland Co., Stamford.
 90 Delaware, do do
 91 Salem, do do
 92 Catawba, Murray Pettit, S. Wentworth Co., Winona.
 93 Duchess, do do
 94 Perkins, do do
 95 Salem, do do
 96 do do do
 97 Jefferson, do do
 98 Agawam, do do
 99 Goethe Rogers No. 1, Murray Pettit, S. Wentworth Co., Winona.
 100 Delaware, W. N. McLeod, Welland Co., Stamford.
 101 do do do
 102 Catawba, Murray Pettit, S. Wentworth Co., Winona.
 103 Triumph, do do
 104 Catawba, do do
 105 Rogers No. 14, do do
 106 do do do
 107 do do do
 108 do No. 15, E. J. Woolverton, Lincoln Co., Grimsby.
 109 Collection of Rogers, do do
 110 Rogers No. 19, do do

QUINCES.

- 1 Orange, Miss McGregor, Lincoln Co., Beamsville.
 2 do Robert Develin, Brant Co., Mohawk.
 3 do James Brodie, Lincoln Co., Grimsby.
 4 do L. Woolverton, do
 5 do N. J. Clinton, Essex Co., Windsor.
 6 do F. W. Wilson, Kent Co., Chatham.
 7 do Miss McCormick, Pelee Island.
 8 Champion, German Findlay, Essex Co., Walkerville.
 9 Orange, E. J. Woolverton, Lincoln Co., Grimsby.
 10 Champion, Dr. Millward, do
 11 do James Stewart, Grey Co., Meaford.

CRAB APPLES.

- 1 Hyslop, H. Cuthbertson, Waterloo Co., Ayr.
 2 do R. Revers & Son, Bruce Co., Walkerton.
 3 do James Campbell, Grey Co., Thornbury.
 4 do D. A. McKinnon, Bruce Co., Paisley.
 5 do G. C. Caston, Simcoe Co., Craighurst.
 6 do W. Fielding, Haliburton Co., Minden.
 7 No name, do do
 8 do do do
 9 Hyslop, A. E. Sherrington, Bruce Co., Walkerton.
 10 Marengo, Joseph Drysdale, Simcoe Co., Hillsdale.
 11 Collection, Algoma Co., Saulte Ste. Marie.
 12 do do
 13 Hyslop, Robert Willis, Simcoe Co., Orillia.
 14 General Hand, Henry Arens, Simcoe Co., Orillia.

APPLES.

- 1 Primate, Morris, Stone & Wellington, Welland Co., Welland.
 2 do do do

3	Yellow Transparent, John Mitchell, Essex Co., Leamington.
4	do do do do
5	Tetofsky, W. Morris, Ontario Co., Oshawa.
6	do do do do
7	do do do do
8	Yellow Transparent, W. S. Turner, Stormont Co., Cornwall.
9	do do do do
10	Irish Peach, do do do
11	do do do do
12	Seedling, Arthur Wigle, Essex Co., Ruthven.
13	Golden Sweet, do do do
14	Seedling, Thomas Miller, do Cottam.
15	Red Astracan, P. G. Orton, do Olinda.
16	Duchess, Thomas R. Hill, do Cottam.
17	Seedling, Henry Wills, Haldimand Co., Winger.
18	Duchess, Aaron Cole, Lincoln Co., St. Catharines.
19	do W. H. Nelles, do Grimsby.
20	do do do do
21	do Job Wilson, Haldimand Co., Marshville.
22	do Van Duzer & Son, Lincoln Co., Grimsby.
23	Red Astracan, W. H. Nelles, do do
24	do A. H. Pettit, do do
25	Early Strawberry, do do do
26	Duchess, Van Duzer & Son, do do
27	Early Strawberry, A. H. Pettit, do do
28	Red Astracan, Van Duzer & Son, do do
29	Sweet Bough, do do do
30	Red Astracan, do do do
31	Sweet Bough, do do do
32	Red Astracan, D. A. McKinnon, Bruce Co., Paisley.
33	Duchess, D. A. McKinnon, do do
34	do do do do
35	Brockville Beauty, G. C. Caston, Simcoe Co., Craighurst.
36	Early Joe, C. Lawrence, do Collingwood.
37	Benoni, John Carnie, Brant Co., Paris.
38	do do do do
39	Red Astracan, S. A. Nelles, Lincoln Co., Grimsby.
40	Yellow Transparent, R. Pearce, Brant Co., Branford.
41	Russian No. 7, R. J. Doyle, Grey Co., Owen Sound.
42	Emperor, do do do
43	Russian No. 9, do do do
44	do P, do do do
45	do do do do do
46	do 3, do do do
47	do A, do do do
48	do Y, do do do
49	do 10, do do do
50	Duchess, Richard Trotter, do do
51	do J. D. Stewart, Perth Co., Russeldale.
52	do do do do
53	do W. Cuthbertson, Waterloo Co., Ayr.
54	do William Berry, Stormont Co., Cornwall.
55	Alexander, William Nicol, Waterloo Co., Ayr.
56	Seedling, Huron Co., Wingham.
57	do do do do
58	Gravenstein, do do do
59	Seedling, Wellington Co., Palmerston.
60	do do do do
61	do do do do
62	Wagener, Grey Co., Thornbury.
63	Snow, R. T. Randall, Waterloo Co., Ayr.
64	Nonsuch, W. Cuthbertson, Waterloo Co., Ayr.
65	Alexander, do do do
66	do B. O. Howell, do do do
67	Nonsuch, Robt. Guthrie, do do do
68	do do do do
69	Halley, James Tolton, Bruce Co., Walkerton.
70	Autumn Strawberry, James Tolton, Bruce Co., Walkerton
71	St. Lawrence, do do do
72	Alexander, do do do

73	Grav
74	Weal
75	Grav
76	Low
77	Grav
78	Alex
79	Holly
80	Weal
81	Gided
82	St. L
83	
84	Cayu
85	Maid
86	Wage
87	Ribst
88	St. L
89	Weal
90	Low
91	Wills
92	Brock
93	Codli
94	Michi
95	Blenh
96	Black
97	Princ
98	Corni
99	Maid
100	Seedli
101	Maid
102	Snow,
103	"
104	Lowel
105	Keswi
106	Grave
107	King
108	Wealt
109	do
110	St. La
111	Baldw
112	Russe
113	Seedli
114	do
115	Variet
116	Maiden
117	Famer
118	North
119	N. Spy
120	Maiden
121	N. Spy
122	Nonsu
123	Winesu
124	Lady
125	Algom
126	Lady A
127	Famen
128	Englis
129	Suton
130	Stump,
131	Swaar,
132	Wealth
133	Canada
134	Wealth
135	Cabash
136	Powan
137	Blenhei
138	Alexan
139	La Rue
140	Fall Jer
141	Seek no

- 73 Gravenstein, James Tolton, Bruce Co., Walkerton.
74 Wealthy Morrison, Stone & Wellington, Welland Co., Welland.
75 Gravenstein, Robt. McKnight, Grey Co., Owen Sound.
76 Lowell or Orange, Rich. Trotter, do
77 Gravenstein, do do
78 Alexander, do do
79 Holly, do do
80 Wealthy, W. S. Turner, Stormont Co., Cornwall.
81 Gideon, do do
82 St. Lawrence, R. Rivers & Son, Bruce Co., Walkerton.
83 do James Tolton, do
84 Cayuga Red Streak, R. Rivers & Son, do
85 Maiden's Blush, James Tolton do
86 Wagener, W. S. Turner, Stormont Co., Cornwall.
87 Ribston Pippin, James Tilton, Bruce Co., Walkerton.
88 St. Lawrence, Sol. Raymond Stormont Co., Monlineville.
89 Wealthy, G. C. Caston, Simcoe Co., Craighurst.
90 Lowell, Robt. Maxwell, Huron Co., Bluevale.
91 Willson's Seedling, Benj. Willson, Huron Co., Wingham.
92 Brockville Beauty, Oliver Raymond, Stormont Co., Dickenson's landing.
93 Codlin, do do
94 Michigan Red, do do
95 Blenheim Orange, Peter Fowler, Huron Co., Wingham.
96 Black Detroit, Oliver Raymond, Stormont Co., Cornwall.
97 Prince Albert, J. D. Roberts, Northumberland Co., Cobourg.
98 Cornish Gilliflower, do do
99 Maiden's Blush, A. H. Pettit, Lincoln Co., Grimsby.
100 Seedling, W. B. Saunders, Simcoe Co., Stayner.
101 Maiden's Blush, A. H. Pettit, Lincoln Co., Grimsby.
102 Snow, W. Williamson, Bruce Co., Walkerton.
103 " do do
104 Lowell, A. E. Sherrington, do
105 Keswick Codlin, A. E. Sherrington, Bruce Co., Walkerton.
106 Gravenstein, Rich Pearce, Brant Co., Brantford.
107 King of Tompkins, Rich, Pearce, Brant Co., Brantford.
108 Wealthy, Peter Kelly, Simcoe Co., Orillia.
109 do Robt. Willis, do
110 St. Lawrence, Jos. Drysdale, do Hillsdale.
111 Baldwin, W. Chisholm, Halton Co., Oakville.
112 Russet, Muir & Nelles, Lincoln Co., Grimsby.
113 Seedling, Algoma, Sault Ste. Marie.
114 do do
115 Variety, do
116 Maiden's Blush, George Sneath, Simcoe Co., Midhurst.
117 Famense, J. D. McDonald, Stormont Co., Cornwall.
118 Northern Spy, John Gordon, Hastings Co., Tweed.
119 N. Spy, Nonsuch, Baldwin, M. L. Soper, Kent Co., Guilds.
120 Maiden's Blush, George Sneath, Simcoe Co., Midhurst.
121 N. Spy and Nonsuch, M. L. Soper, Kent Co., Guilds.
122 Nonsuch, Duncan Clark, Simcoe Co., Marchmont.
123 Winesap, W. Y. Pettit, Halton Co., Oakville.
124 Lady Apple, S. A. Nelles, Lincoln Co., Grimsby.
125 Algoma Seedling, Andrew Clifford, Algoma, St. Joseph's I.
126 Lady Apple, J. D. Roberts, Northumberland Co., Cobourg.
127 Famense, W. J. McCracken, Grey Co., Meaford.
128 English Russet, Oliver Raymond Stormont, Dickenson's Ldg
129 Sutton Beauty, Francis Peck, Prince Edwards, Albury.
130 Stump, do do
131 Swaar, F. W. Wilson, Kent Co., Chatham.
132 Wealthy, Francis Peck, Prince Edwards Co., Albury.
133 Canada Red, F. W. Wilson, Kent Co., Chatham.
134 Wealthy, W. Kerr, Bruce Co., Chatham.
135 Cabasha, Andrew C. Pettit, Halton Co., Trafalgar.
136 Powankee, William Berry, Stormont Co., Cornwall.
137 Blenheim Pippin, W. Y. Pettit, Halton Co., Oakville.
138 Alexander and Spy, John Lauder, York Co., Deer Park.
139 La Rue, G. C. Caston, Simcoe Co., Craighurst.
140 Fall Jenneeting, N. Cuthbertson, Waterloo Co., Ayr.
141 Seek no farther, James Tolton, Bruce Co., Walkerton.

142	Seek no farther, James Tolton, Bruce Co., Walkerton.
142	do do do
143	Canada Red, do do
144	do do do
145	Golden Pippin, John Mitchell, Oxford Co., Ayr.
146	King of Tompkins, H. Coleman, Bruce Co., Paisley.
147	Northern Spy, do do
148	Greening, J. H. & G. Smith, Lincoln Co., Grimsby.
149	N. Spy, L. Hagar, do do
150	do Morse & Adams, Lincoln Co., Smithville.
151	do A. H. Pettit, do Grimsby.
152	do W. Y. Pettit, Halton Co., Oakville.
153	Ontario, Thos. Mitchell, Waterloo Co., Ayr.
154	N. Spy, Henry Hill, Elgin Co., West Lorne.
155	Kentish Fillbasket, A. C. Sherrington, Bruce Co., Walkerton.
156	Late Strawberry, Andrew C. Pettit, Halton Co., Oakville.
157	Alexander, Fergus Anderson, Waterloo Co., Ayr.
158	Haas, Fred Meyers, Waterloo Co., Bridgeport.
159	Russian Nos. 4 & 315, Fred Meyer, Waterloo Co., Bridgeport.
160	Gibson, D. Nicol, Frontenac Co., Catarqui.
161	do do do
162	Wagener, James Tolton, Bruce Co., Walkerton.
163	King of Tompkins, James Tolton, Bruce Co., Walkerton.
164	Hubbardson's Nonsuch, Duncan Monroe, Stormont Co., Cornwall.
165	Famense, Oliver Raymond, do Dickenson's Ldg.
166	Cayuga Red Stréak, Fred Meyer, Waterloo Co., Bridgeport.
167	Cabasha, James Tolton, Bruce Co., Walkerton.
168	do A. C. Pettit, Halton Co., Oakville.
169	Haas or Fall Queen, G. C. Caston, Simcoe Co., Craighurst.
170	Beall, Thos. Beall, Victoria Co., Lindsay.
171	Gloria Memdi, W. Brocklebank, Bruce Co., Maple Hill.
172	Esopus Spitzenburgh, James Tolton, do Walkerton.
173	Holland Pippin, John McPhee, do Paisley.
174	Powaukee, William Berry, Stormont, Cornwall.
175	Russet, A. C. Pettit, Halton, Trafalgar.
176	Talman Sweet, A. C. Pettit, Halton, Trafalgar.
177	Collection, E. Morse, Lincoln Co., Smithville.
178	do G. Adams, do do
179	Am. Golden and Eng. Russet, W. A. H. Duff, S. Wentworth Co., Barton.
180	Roxbury and Eng., do do do
181	Golden Russet, George Lamb, Bruce Co., Paisley.
182	Cabasha, George Sneath, Simcoe Co., Midhurst.
183	Seedling, Chas. Ashley, Bruce Co., Walkerton.
184	Talman Sweet, George Adams, Lincoln Co., Smithville.
185	Canada Red, Donald Munro., Bruce Co., Gillies Hill.
186	Seedlier & Baldwin, Chas. Gamon, Simcoe Co., Collingwood.
187	Russian No. 15 M., Fred Meyer, Waterloo Co., Berlin.
188	Russian Nos. 15 and 371, do do
189	do do do
190	Ontario, Thomas Mitchell, Waterloo Co., Ayr.
191	do Dr. Henderson, Huron Co., Wingham.
192	Cooper's Market and Lady Sweet, G. Adams, Lincoln Co., Smithville.
193	Jersey Sweet, Robert Brown, Bruce Co., Paisley.
194	N. Spy, Ira Johnston, Simcoe Co., Orillia.
195	do Oliver Raymond, Stormont Co., Dickenson's Landing.
196	do Samuel Cochrane, Waterloo Co., Ayr.
197	Gideon, F. Jamieson, Simcoe Co., Dalston.
198	do Henry Arens, do Orillia.
199	Wallbridge, John Wainman, Simcoe Co., Orillia.
200	do do do
201	Seedling Russet, Mrs. Joy, do do
202	Haas, Henry Arens, do do
203	Gravenstein, F. Meyer, Waterloo Co., Bridgeport.
204	Hawley, do do
205	King of Tompkins, G. C. Caston, Simcoe Co., Craighurst.
206	Pippin, John Mitchell, Waterloo Co., Ayr.
207	Blue Pearmain, Oliver Raymond, Stormont, Dickenson's Landing
208	Alexander, J. E. Johnston, Hastings Co., Chapman.
209	do Henry Tracey, Simcoe Co., Minesing.
210	do F. Meyer, Waterloo Co., Bridgeport.

211 Cay
212 Gol
213 Rox
214 Am
215
216
217
218 Kin
219 Gol
220
221 Nob
222 Ont
223 Ont
224 Eso
225 Gri
226 Glo
227 Wa
228 Fal
229 Am
230 Fro
231 Mac
232 La
233 Riv
234 Tre
235 Lee
236 20 o
237 Spit
238 See
239 Cra
240 Sno
241 N. S
242 N. S
243 Glo
244 Bal
245 Hol
246 Alg
247 Cab
248 Wes
249 Cra
250 Bal
251 Bal
252 Kin
253 Sno
254 do
255 do
256 do
257 do
258 Gree
259 d
260 d
261 d
262 Man
263 Col
264 Bal
265 Col
266 Wal
267 Ben.
268 Gold
269 Ben.
270 Caba
271 Colle
272 Gold
273 Fam

1 Huckl
2 Goose
3
4

- 211 Cayuga Red Streak, W. Kirk, Bruce Co., Paisley.
 212 Golden Russet, Edwin Peart, Halton Co., Nelson.
 213 Roxbury Russet, do do
 214 Am. G. Russet, do do
 215 do Joseph Weingate, Bruce Co., Walkerton.
 216 do G. J. Bolster, Simcoe Co., Orillia.
 217 do Andrew Brady, Hastings Co., Tweed.
 218 King of Tompkins, Alex. Elves, Bruce Co., Paisley.
 219 Golden Russet, James Tolton, Bruce Co., Walkerton.
 220 do do do
 221 Nobles Vandevere, David Noble, do
 222 Ontario, J. D. Stewart, Perth Co., Russeldale.
 223 Ontario, Richard Trotter, Grey Co., Owen Sound.
 224 Esopus Spitzenburgh, James Tolton, Bruce Co., Walkerton.
 225 Grimes Golden, do do
 226 Gloria Memdi do do
 227 Wagener, do do
 228 Fallawater, Ira Johnston, Simcoe Co., Orillia.
 229 American Pippin, J. N. Broderick, Lincoln Co., [St. Catharines.
 230 Frontenac Red, D. Nicol, Frontenac Co., Catarauqui.
 231 MacLean, do do
 232 La Rue, do do
 233 Rivers Winter Peach, etc., P. C. Dempsey & Son, Prince Edward, Trenton.
 234 Trenton, do do
 235 Leeds, D. Nicol, Frontenac Co., Catarauqui.
 236 20 oz. Pippin, J. W. Wainman, Simcoe Co., Orillia.
 237 Spitz, Conrad Sieling, Bruce Co., Mildmay.
 238 Seedling, Samuel Shaw, Hastings Co., Ivanhoe.
 239 Cranberry Pippin, James Stewart, Grey Co., Meaford.
 240 Snow, Henry Tracey, Simcoe Co., Minesing.
 241 N. Spy, F. G. Hebert, Lincoln Co., Grimsby.
 242 N. Spy, James Tolton, Bruce Co., Walkerton.
 243 Gloria Memdi, Duncan Clark, Simcoe Co., Marchmont.
 244 Baldwin, James Tolton, Bruce Co., Walkerton.
 245 Holland Pippin, F. Meyer, Waterloo Co., Bridgeport.
 246 Algoma Seedling, Algoma Co., Sault Ste. Marie.
 247 Cabashea, James Tolton, Bruce Co., Walkerton.
 248 Wealthy, John McDonald, Stormont Co., Cornwall.
 249 Cranberry Pippin, Edgar Woolverton, Lincoln Co., Grimsby.
 250 Baldwin, Aaron Cole, do St. Catharines.
 251 Baldwin, Henry Hill, Elgin Co., West Lorne.
 252 King, Richard Trotter, Grey Co., Owen Sound.
 253 Snow, Andrew Brady, Hastings Co., Tweed.
 254 do G. J. Caston, Simcoe Co., Craighurst.
 255 do Robert Kerr, Hastings Co., Thomasburg.
 256 do James Stewart, Grey Co., Meaford.
 257 do Henry Tracey, Simcoe Co., Minesing.
 258 Greening, Peter Fowler, Huron Co., Wingham.
 259 do Henry Hill, Elgin Co., West Lorne.
 260 do Andrew C. Pettit, Halton Co., Trafalgar.
 261 do James Tolton, Bruce Co., Walkerton.
 262 Mann, Robert Willis, Simcoe Co., Orillia.
 263 Collection.
 264 Baldwin, S. A. Nelles, Lincoln Co., Grimsby.
 265 Collection, W. B. Beamer, do
 266 Wallbridge, W. H. Leef, Simcoe Co., Orillia.
 267 Ben. Davis do do
 268 Golden Russet, S. A. Nelles, Lincoln Co., Grimsby.
 269 Ben. Davis, W. H. Leef, Simcoe Co., Orillia.
 270 Cabashea, W. B. Beamer, Lincoln Co., Grimsby.
 271 Collection.
 272 Golden Russet, S. A. Nelles, Lincoln Co., Grimsby.
 273 Famense, Thomas Beall, Victoria Co., Lindsay.

WILD FRUIT.

- 1 Huckleberries, James Brodie, Lincoln Co., Grimsby.
 2 Gooseberries, do do
 3 do do do
 4 do do do

5	Gooseberries,	James Cole,	Lincoln Co.,	Grimsby.
6	Huckleberries,	D. Maddaugh,	Haldimand Co.,	Dunnville.
7	do	do	do	
8	do	do	do	
9	May Apples,	R. T. Randall,	Waterloo Co.,	Ayr.
10	Canadian Walnut,	A. H. Pettit,	Lincoln Co.,	Grimsby.
11	Native Plum,	W. Fielding,	Haliburton Co.,	Minden.
12	do	do	do	
13	do	do	do	
14	Butternut,	Alfred Bingle,	Lincoln Co.,	Grimsby.
15	do	do	do	
16	Cranberries,	Low Bush,	W. Fielding,	Haliburton Co.,
17	Canadian Walnut,	James Hewitt,	Lincoln Co.,	Grimsby.
18	do	J. A. Macdonald,	do	
19	Cranberries,	Low Bush.		
20	Kentish Cob Nuts,		Pele Island.	
21	do		do	
22	Canadian Chestnuts,		Lincoln Co.	
23	do		do	
24	Hickory Nuts,		do	
25	Cranberries,	High Bush,	T. Henderson,	Lincoln Co.,
26	do	do	do	Grimsby.
27	Thorn Apples,	Dr. E. W. Millward.	do	
28	do	James Brodie,	do	
29	do	Percy Millward,	do	
30	do	do	do	

