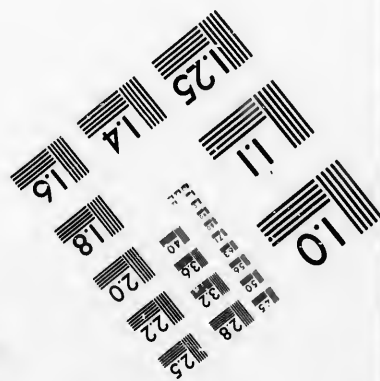
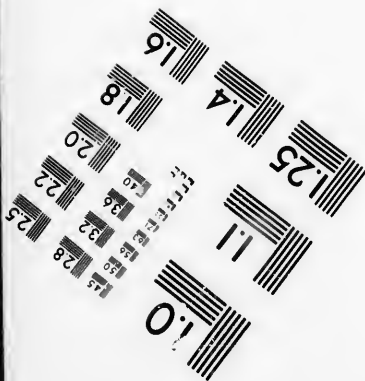
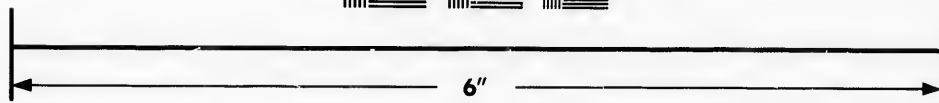
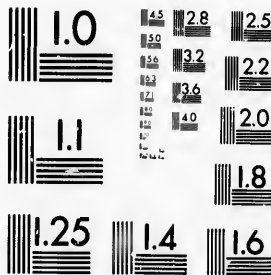


**IMAGE EVALUATION
TEST TARGET (MT-3)**



**Photographic
Sciences
Corporation**

23 WEST MAIN STREET
WEBSTER, N.Y. 14580
(716) 672-4503

24 28 25
22 20 18

**CIHM/ICMH
Microfiche
Series.**

**CIHM/ICMH
Collection de
microfiches.**



Canadian Institute for Historical Microreproductions / Institut canadien de microreproductions historiques

10

© 1986

Technical and Bibliographic Notes/Notes techniques et bibliographiques

The Institute has attempted to obtain the best original copy available for filming. Features of this copy which may be bibliographically unique, which may alter any of the images in the reproduction, or which may significantly change the usual method of filming, are checked below.

L'Institut a microfilmé le meilleur exemplaire qu'il lui a été possible de se procurer. Les détails de cet exemplaire qui sont peut-être uniques du point de vue bibliographique, qui peuvent modifier une image reproduite, ou qui peuvent exiger une modification dans la méthode normale de filmage sont indiqués ci-dessous.

- Coloured covers/
Couverture de couleur
- Covers damaged/
Couverture endommagée
- Covers restored and/or laminated/
Couvertures restaurée et/ou pelliculée
- Cover title missing/
Le titre de couverture manque
- Coloured maps/
Cartes géographiques en couleur
- Coloured ink (i.e. other than blue or black)/
Encre de couleur (i.e. autre que bleue ou noire)
- Coloured plates and/or illustrations/
Planches et/ou illustrations en couleur
- Bound with other material/
Relié avec d'autres documents
- Tight binding may cause shadows or distortion along interior margin/
La reliure serrée peut causer de l'ombre ou de la distorsion le long de la marge intérieure
- Blank leaves added during restoration may appear within the text. Whenever possible, these have been omitted from filming/
Il se peut que certaines pages blanches ajoutées lors d'une restauration apparaissent dans le texte, mais, lorsque cela était possible, ces pages n'ont pas été filmées.
- Additional comments:/
Commentaires supplémentaires:

- Coloured pages/
Pages de couleur
- Pages damaged/
Pages endommagées
- Pages restored and/or laminated/
Pages restaurées et/ou pelliculées
- Pages discoloured, stained or foxed/
Pages décolorées, tachetées ou piquées
- Pages detached/
Pages détachées
- Showthrough/
Transparence
- Quality of print varies/
Qualité inégale de l'impression
- Includes supplementary material/
Comprend du matériel supplémentaire
- Only edition available/
Seule édition disponible
- Pages wholly or partially obscured by errata slips, tissues, etc., have been refilmed to ensure the best possible image/
Les pages totalement ou partiellement obscurcies par un feuillet d'errata, une pelure, etc., ont été filmées à nouveau de façon à obtenir la meilleure image possible.

This item is filmed at the reduction ratio checked below/
Ce document est filmé au taux de réduction indiqué ci-dessous.

10X	12X	14X	16X	18X	20X	22X	24X	26X	28X	30X	32X
					✓						

The copy filmed here has been reproduced thanks to the generosity of:

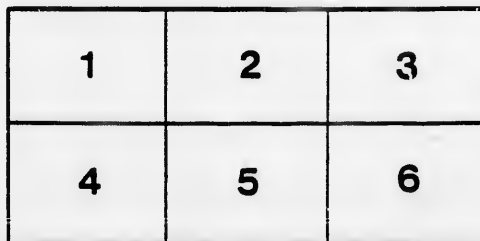
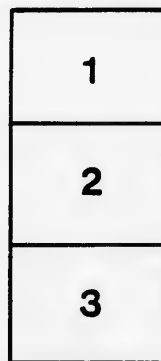
Archives of Ontario
Toronto

The images appearing here are the best quality possible considering the condition and legibility of the original copy and in keeping with the filming contract specifications.

Original copies in printed paper covers are filmed beginning with the front cover and ending on the last page with a printed or illustrated impression, or the back cover when appropriate. All other original copies are filmed beginning on the first page with a printed or illustrated impression, and ending on the last page with a printed or illustrated impression.

The last recorded frame on each microfiche shall contain the symbol \rightarrow (meaning "CONTINUED"), or the symbol ∇ (meaning "END"), whichever applies.

Maps, plates, charts, etc., may be filmed at different reduction ratios. Those too large to be entirely included in one exposure are filmed beginning in the upper left hand corner, left to right and top to bottom, as many frames as required. The following diagrams illustrate the method:



L'exemplaire filmé fut reproduit grâce à la générosité de:

Archives of Ontario
Toronto

Les images suivantes ont été reproduites avec le plus grand soin, compte tenu de la condition et de la netteté de l'exemplaire filmé, et en conformité avec les conditions du contrat de filmage.

Les exemplaires originaux dont la couverture en papier est imprimée sont filmés en commençant par le premier plat et en terminant soit par la dernière page qui comporte une empreinte d'impression ou d'illustration, soit par le second plat, selon le cas. Tous les autres exemplaires originaux sont filmés en commençant par la première page qui comporte une empreinte d'impression ou d'illustration et en terminant par la dernière page qui comporte une telle empreinte.

Un des symboles suivants apparaîtra sur la dernière image de chaque microfiche, selon le cas: le symbole \rightarrow signifie "A SUIVRE", le symbole ∇ signifie "FIN".

Les cartes, planches, tableaux, etc., peuvent être filmés à des taux de réduction différents. Lorsque le document est trop grand pour être reproduit en un seul cliché, il est filmé à partir de l'angle supérieur gauche, de gauche à droite, et de haut en bas, en prenant le nombre d'images nécessaire. Les diagrammes suivants illustrent la méthode.

ails
du
odifier
une
image

rrata
o

pelure,
a à

32X

.....
List of Voters

Of the Municipality of the

Township

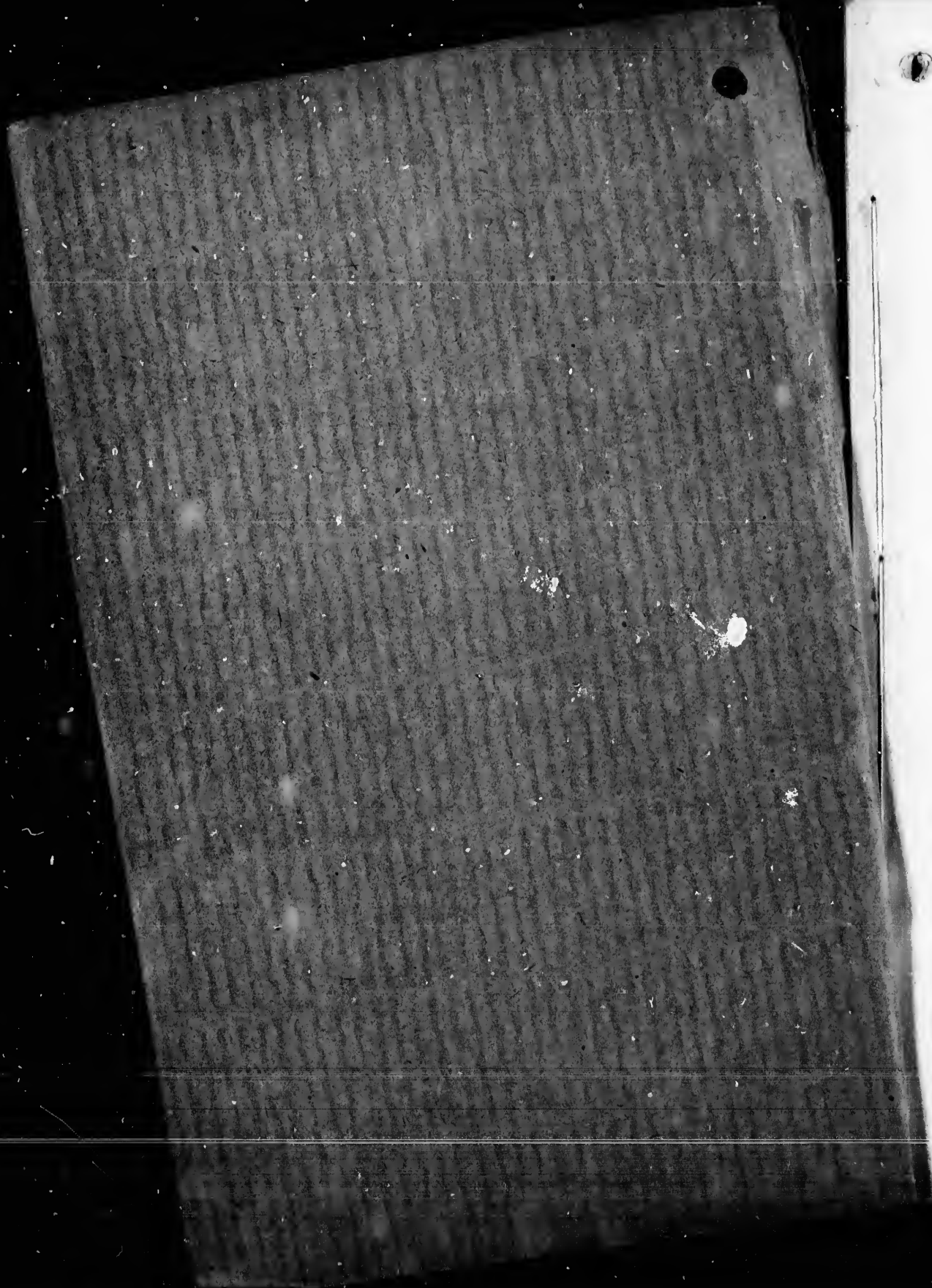
Of Pickering

For the year 1898.

D. R. Beaton, Clerk.

PICKERING:

Printed by W. J. Clark, at the "News" office.





* LIST * OF * VOTERS * *

— OF THE —

.... MUNICIPALITY

— OF THE —

Township * of * Pickering

= || = || - FOR THE YEAR = || = || =

....1898....

Donald R. Beaton, - - Township Clerk.

PICKERING :

PRINTED BY W. J. CLARK, AT THE OFFICE OF THE PICKERING NEWS.

1898.



VOTERS' LIST 1898.

Instructions to those to whom these Lists are sent.

SECTION 11—"The Sheriff shall, immediately upon receipt of his copies, cause one of them to be posted up in a conspicuous place in the Court House; the Clerk of the Peace, upon receipt of his copies shall cause one of them to be posted up in a conspicuous place in his office; every Public and Separate School Head Master or Mistress shall in a like manner post up one of his or her copies on the door of the School House, and every Postmaster shall post up one of his copies in the Post Office."—Chapter 7, R. S. O.

Schedule of Post Offices.

1 Pickering	19 Glen Major
2 Dunbarton	20 Highland Creek
3 Rouge Hill	21 Locust Hill
4 Port Union	22 Mongolia
5 Audley	23 Stouffville
6 Brock Road	24 Scarboro
7 Cherrywood	25 Box Grove
8 Whitevale	26 Cedar Groye
9 Kinsale	27 Markham
10 Greenwood	28 Goodwood
11 Brougham	29 Toronto
12 Green Riv.	30 Oshawa
13 Atha	31 Port Perry
14 Altona	32 Myrtle
15 Claremont	33 Uxbridge
16 Balsam	34 Woburn
17 Whitby	35 Unionville
18 Brooklin	

Voters' List for 1898.

—: Municipality of the —:

* Township of Pickering *

Polling Sub Division No. 1.

Comprising all the Lots from No. 1 to No. 10 inclusive, from the Lake to the Fourth Concession Line.

PART I.—List of persons entitled to vote at both Municipal Elections and Elections to the Legislative Assembly.

NO. ON ROLL.	JUROR.	NAME.	OCCUPATION	LOT	CON	.	P. O.
15		Austin, Sylvanus	farmer	1	2	f	m f 17
63	j	Brown, Milton	farmer	3	1	f	m f 17
66	j	Balsdon, Edwin	farmer	10	b f	t	m f 1
70	j	Balmer, William	farmer	2	2	t	m f 17
72	j	Bunker, S C	farmer	9	b f	t	m f 1
73	j	Bunker, Frederick	farmer	9	b f	t	m f 1
85	j	Bradley, Robert J	farmer	2	1	t	m f 17
87	j	Bradford, Charles	farmer	10	2	t	n. f 1
88	j	Bradford, George	farmer	10	2	t	m f 1
89	j	Bradford, Charles jr	farmer	10	2	t	m f 1
94	j	Brown, Wing R	farmer	6	1	t	m f 1
97	j	Brown, Warner L	farmer	7	1	t	m f 1
98	j	Brown, Gilbert B	farmer	7	1	t	m f 1
102	j	Brantou, John	laborer	6	2	t	m f 1
104		Bath, John	farmer	1	1	f	m f 17
111	j	Brown, Franklin	farmer	8	2	t	m f 1
112	j	Brown, Richard	farmer	8	2	t	m f 1
117	j	Blake, Henry	farmer	7	3	t	m f 5
127		Boyes, William	mason	2	3	f	m f 5

POLLING SUB-DIVISION No. 1.

NO. ON ROLL.	JUROR	NAME.	OCCUPATION	LOT	CON	P. O.
128	j	Bryan, Edward	farmer	9	3	t m f 1
188		Brown, Thomas W	farmer	9	3	f m t 1
184	j	Bye, Joseph	farmer	6	3	t m f 5
185	j	Bye, Russell	farmer	6	3	t m f 5
141	j	Bell, John jr	farmer	6	3	f m f 5
149	j	Boone, Llewellyn	farmer	10	3	f m f 1
252	j	Cocherham, Henry	farmer	4	b f	t m f 17
262	j	Carruthers, David W	farmer	5	1	f m f 17
285		Cronk, Stephen	farmer	10	2	f m f 1
286	j	Cronk, Robert H	farmer	10	2	f m f 1
287		Cornell, Edward	farmer	9	2	f m f 1
288	j	Cornell, James	farmer	9	2	f m f 1
299	j	Cornell, Gervas	farmer	8	2	f m f 1
300	j	Cornell, William V	farmer	8	2	f m f 1
301	j	Cornell, Walter	farmer	8	2	f m f 1
318		Clark, Smith	farmer	10	3	f m f 1
319	j	Chapman, N J	farmer	9	3	f m f 1
320	j	Chapman, Frank M	farmer	9	3	f m f 1
321	j	Chapman Ernest L	farmer	9	3	t m f 1
332	j	Crawford, T E	farmer	8	3	t m f 1
86		Carter, John	Gentleman	2	1	f m f 17
393	j	Davey, Walter J	farmer	1	2	f m f 17
394	j	Davey, Thomas N	farmer	1	2	f m f 17
395	j	Davey, Byron	farmer	1	2	f m f 17
396	j	Davey, Frederick	farmer	1	2	f m f 17
499		Fowlie, Benjamin	laborer	9	1	t m f 1
511		Fowlie, James	farmer	5	3	t m f 5
586	j	Grayer, John	farmer	3	b f	t m f 17
588	j	Gorman, Patrick	farmer	9	b f	t m f 1
556		Gormley, John	laborer	4	1	t m f 1
592		Gulliver, John H	laborer	7	2	t m f 1
684		Hobbs, William	farmer	8	1	f m f 1
685	j	Hobbs, Frederick W	farmer	8	1	f s m f 1

Lako

t Elec.

17
17
1
17
1
1
17
1
1
1
17
1
1
5
5

POLLING SUB-DIVISION No. 1.

NO. ON ROLL.	JUROR	NAME.	OCCUPATION	LOT	CON		
698		Hill, Louis	laborer	8	2	t	
699		Hartrick, Benjamin	farmer	8	1	f	m f 5
700	j	Hartrick, Geo B	farmer	8	1	f	m f 1
706		Hancock, Thomas	agent	10	1	t	m f 1
710	j	Holt, James	farmer	6	b f	t	m f 1
720	j	Howland, Robert	farmer	2	b f	t	m f 1
726	j	Huntley, George A	farmer	3	8	t	m f 5
827		Irving, Simon	gentleman	2	8	f	m f 5
844	j	Johnston, Robert E	farmer	6	2	t	m f 1
852	j	Jones, Frank E	farmer	5	1	f	m f 17
891	j	Kemp, William	farmer	1	b f	t	m f 17
899	j	Kennedy, James	farmer	7	b f	t	m f 1
900	j	Kennedy, George	farmer	7	b f	t	m f 1
902	j	Kennedy, Michael	farmer	5	b f	t	m f 1
984		Lee, Whitfield	farmer	1	1	f	m f 17
960	j	Linton, Samuel	farmer	9	2	f	m f 1
1080		McCausland, William	farmer	7	b f	f	m f 1
1081	j	McCausland, Wm jr	farmer	5	b f	t	m f 1
1082	j	McCausland, Lundy	farmer	5	b f	t	m f 1
1086	j	McGuire, Richard	farmer	5	2	t	m f 1
1088		McBrady, Daniel	gentleman	3	3	f	m f 5
1094	j	McBrady, James	farmer	4	3	f	m f 5
1103	j	Maddaford, Emanuel	farmer	4	2	t	m f 17
1104	j	Maddaford, Thomas	farmer	4	2	t	m f 17
1283		Neale, Thomas	farmer	2	2	t	m f 5
1284	j	Neale, George	farmer	2	2	t	m f 5
1266	j	O'Connor, George	farmer	1	3	f	m f 17
1272	j	Osborne, Thomas C	farmer	2	3	t	m f 5
1273	j	Osborne, Cephas	farmer	2	3	f s	m f 5
1283		Philp, Richard T	farmer	4	1	f	m f 17
1284	j	Philp Thomas E	farmer	4	1	f	m f 17
1286		Powell, Henry	farmer	5	b f	f	m f 1
1304	j	Powell, John	farmer	10	b f	f	m f 1

Voters' List for 1898.

—: Municipality of the —:

* Township of Pickering *

Polling Sub Division No. 1.

Comprising all the Lots from No. 1 to No. 10 inclusive, from the Lake to the Fourth Concession Line.

PART II.--Persons entitled to vote at Municipal Elections only.

NO. ON ROLL.	JUROR.	NAME.	OCCUPATION	LOT	CON		CO.
64		Brown, Mrs E	widow	3	1	f	17
65		Brown, Frank		3	1	f	
95		Brown, Mrs S	widow	6	1	f	1
119		Boone, Annie W	spinster	10	2	f	1
132		Byron, Mrs Jane	widow	8	3	f	5
138		Bell, John	farmer	7	3	f	5
139		Bell, William	farmer	7	3	f	5
140		Bell, Albert	farmer	7	3	f	5
1087		Brown, Sherman	gentleman	5	2	f	17
1285		Brown, N J		6	1	f	
261		Carruthers, Mrs R	widow	4	1	f	17
373		Crawford, W F		8	3	f	33
892		Collins, Mrs R	widow	1	b f	f	17
901		Campbell, James		7	b f	f	
1342		Cummings, Mrs	widow	3	3	f	
1790		Collins, Mrs	widow	2	3	f	2
456		Elliott, Francis		10	3	f	
74		Foster, Sarah	widow	9	b f	f	
494		Fothergill, John	farmer	10	1	f	17

POLLING SUB DIVISION No. 1.

9

NO. ON ROLL.	JUROR.	NAME.	OCCUPATION	LOT	CON		P. O.
118		Grant, A S	clergyman	8	2	f	29
617		Guthrie, Richard	farmer	1	3	f	5
1532		Gold, William S	gentleman	6	b f	f	17
539		Logan, Robert		9	b f	f	
1105		Long, James	merchant	4	2	f	17
1106		Long, J H	grain deal'r	4	2	f	17
512		Madill, Mrs	widow	5	3	f	5
1049		McKay, Miss	spinster	6	2	f	
1085		McGuire, Mrs	widow	5	2	t	1
1445		Oke, Richard	farmer	1	2	f	17
67		Richardson, James T		10	b f	f	
537		Richardson, Mrs J	widow	3	b f	f	17
721		Richardson, A W		2	b f	f	
1235		Ross, Hugh	merchant	2	2	f	17
1236		Ross, George	merchant	2	2	f	17
1442		Richardson, A M	gentleman	2	1	f	17
1670		Richardson, Mrs E A	widow	1	1	f	17
129		Thompson, Mrs J	widow	9	3	f	18
130		Thompson, Janet	spinster	9	3	f	18
131		Thompson, Christina	spinster	9	3	f	18
99		Vail, Mrs M	widow	7	1	f	1
100		Vail, Phoebe	spinster	7	1	f	1
103		Vickers, Mrs Hannah	widow	6	2	f	17
1747		Wetherald, Mrs J	widow	10	1	f	1
71		Woodruff, V B	hotelkeeper	2	2	f	17
118		Whiteman, Dr		7	2	f	
136		Whitfield, T B		6	3	f	17
137		Whitfield, T G		6	3	f	17
253		Westlake, William	contractor	4	b f	f	17

Lake

P. O.
17
1
1
5
5
17
17
33
17
2
17

Voters' List for 1898.

—: • Municipality of the —:

* Township of Pickering *

Polling Sub Division No. 1.

Comprising all the Lots from No. 1 to No. 10 inclusive, from the Lake to the Fourth Concession Line.

PART III.—Persons entitled to vote at Elections to the Legislative Assembly only.

NO. ON ROLL.	JUROR.	NAME.	OCCUPATION	LOT	CON		6 a
96		Brown, David B	laborer	6	1	m f	1
110		Bath, David	laborer	1	b f	m f	17
115		Brown, N J	farmer	10	1	m f	1
897		Dade, George	laborer	8	b f	m f	1
898		Divine, James	laborer	7	b f	m f	1
468		Edwards, Isaac	laborer	2	2	m f	17
576		Gorman, Jeremiah	laborer	9	b f	m f	1
678		Harlock, Joseph	laborer	10	b f	m f	1
708		Hancock, Herbert	laborer	10	1	m f	1
709		Hancock, William E	laborer	10	1	m f	1
951		Lee, John H	teacher	4	b f	m f	1
1287		Neale, Charles	laborer	2	2	m f	5
1816		Powell, Woodruff	laborer	5	1	m f	1
1702		Woodward, Enos	laborer	8	b f	m f	17
1777		Woodward, William	laborer	2	3	m f	17
1781		Walters, John	laborer	2	3	m f	5

Voters' List for 1898.

—: Municipality of :—

* Township of Pickering *

Polling Sub-Division No. 2.

Comprising all the lots from No. 11 to No. 14 inclusive, from the Lake to the Fourth Concession Line.

PART I.—List of persons entitled to vote at both Municipal Elections and Elections to the Legislative Assembly.

	6 2	NO ON ROLL.	JUROR.	NAME.	OCCAPATION	LOT	CON		P. O.
f	1	21		Annan, Robert	farmer	12	2	f	m f 1
f	17	22	j	Annan, David	farmer	12	2	f	m f 1
f	1	23	j	Annan, Theodore	farmer	12	2	f	m f 1
f	1	1883	j	Annan, David	drover	14	1	f	m f 1
f	1	105	j	Boyes, John	farmer	11	1	t	m f 1
f	17	106	j	Boyes, Albert	farmer	11	1	t	m f 1
f	1	116	j	Brown, Franklin	laborer	12	2	f	m f 1
f	1	120	j	Barrett, Richard	farmer	12	2	f	m f 1
f	1	1884		Bunting, Brereton	gentleman	14	1	f	m f 1
f	1	271	j	Cullis, William	farmer	12	1	t	m f 1
t	1	272		Cullis, Richard	farmer	12	1	t	m f 1
f	5	328	j	Calvert, Thomas	farmer	13	3	t	m f 1
f	1	1926		Douglas, George	laborer	14	1	t	m f 1
f	17	1927		Douglas, Michael	laborer	14	1	t	m f 1
f	17	1928		Douglas, Thomas	laborer	14	1	t	m f 1
f	5	383	j	Dale, William J	gentleman	13	1	f	m t 1
		402	j	Douglas, Andrew	farmer	13	1	t	m f 1
		407	j	Doyle, Joseph	farmer	12	3	f	m f 1
		408	j	Doyle, Frederick	farmer	12	3	f	m f 1

NO. ON ROLL.	JUROR.	NAME.	OCCUPATION	LOT	CON		P. O.
1898	j	Dickie, William	laborer	14	1	f	m f 1
1900		Dingman, Nelson	gentleman	14	1	f	m f 1
457	j	Elliott, Thomas	farmer	11	3	f	m f 5
466		Elviss, W H	millar	14	1	t	m f 1
1906		Every, David F	laborer	14	2	t	m f 1
478	j	Field, Thomas	farmer	18	b f	f	m f 1
479	j	Field, Claude	farmer	18	b f	f	m f 1
480	j	Field, George	farmer	18	b f	f	m f 1
504	j	Forsyth, Andrew	farmer	11	2	t	m f 1
1909		Field, John	Gentleman	14	1	f	m t 1
561	j	Greenlaw, John	farmer	14	b f	f	m f 1
577		Gordon, Henry	farmer	18	1	f	m f 1
578	j	Gordon, George	farmer	18	1	f	m f 1
579	j	Gordon, Lafayette	farmer	18	1	f	m f 1
1914	j	Gordon, Robert	carpenter	14	2	f	m f 1
1915		Gordon, George A	carpenter	14	1	f	m f 1
1916	j	Gordon, William D	cooper	14	1	f	m f 1
679		Head, Thomas H	laborer	14	b f	t	m f 1
701		Ham, William	farmer	11	2	f	m f 1
716	j	Haight, Henry A	farmer	18	3	f	m f 1
717	j	Huggins, Alfred	farmer	14	3	t	m f 1
1937	j	Haney, William	R R	14	1	f	m f 1
1941		Howlett, Arthur	laborer	14	1	f	m f 1
1944		Hartrick, Wm T	gentleman	14	1	f	m f 1
1998		Henderson, William	laborer	14	1	f	m f 1
836	j	Jones, George H	farmer	14	2	f	m f 1
1648		Kerr, George	banker	14	1	Income	m f 1
925	j	Leaming, Thomas	farmer	12	b f	f	m f 1
926		Leaming, Philip	farmer	12	b f	f	m f 1
932		Larkin, John	farmer	14	b f	f	m f 1
933	j	Larkin, Henry	farmer	14	b f	f	m f 1
973	j	Lockwood, William	farmer	11	2	t	m f 1
1949		Ludgate, John	laborer	14	1	t	m f 1

POLLING SUB-DIVISION No. 2.

NO. ON ROLL.	JUROR.	NAME.	OCCUPATION	LOT	CON		C	R.
1749	j	Wilson, Thomas	farmer	12	1	f	m f	1
1750	j	Wilson, Henry	farmer	12	1	f s	m f	1
1754	j	Wray, Joseph	farmer	11	b f	t	m f	1
2016		Wright, Edmund	gentleman	14	2	f	m f	1

Voters' List for 1898.

—: — Municipality of —:

* Township of Pickering *

Polling Sub-Division No. 2.

Comprising all the lots from No. 11 to No. 14 inclusive, from the Lake to the Fourth Concession Line.

PART II.—Persons entitled to vote at Municipal Elections only.

NO. ON ROLL.	JUROR.	NAME.	OCCAPATION	LOT	CON		5
1882		Andrew, Mrs Susannah	widow	14	1	f	1
169		Boone, Edward		12	8	f	1
1262		Boone, Hannah	spinster	12	8	f	1
1263		Boone, Jemima	spinster	12	8	f	1
1264		Boone, Margaret	spinster	12	8	f	1
1265		Boone, Elizabeth	spinster	12	8	f	1
1991		Cornell, Mary A	spinster	14	1	f	1
412		Doughty, Mrs M	widow	14	8	f	1
1895		Dale, S A	spinster	14	1	f	1
1097		Duggan, Mrs	widow	11	8	f	10
467		Gee, Mrs Fred	widow	14	1	f	29
688		Howland, Mrs	widow	14	1	f	1
1942		Kinnelly, Mary	widow	14	1	f	1
1907		Logan, Christina	spinster	14	2	f	
940		Leavens, Mrs D	widow	13	2	f	1
962		Linton, Frank	caretaker	11	1	f	17
1955		Linton, John A	R R	14	1	f	
1956		Lidgett, Sarah	spinster	14	1	f	1
1957		Leng, Mrs George	widow	14	1	f	1

POLLING SUB-DIVISION No. 2.

NO. ON ROLL.	JUROR.	NAME	OCCUPATION	LOT	CON	S	A
1978		Latchford, Mary	widow	14	1	f	
829		McGeogh, James		18	8	f	
1048		Miller, Wm J		18	1	f	
1978		Mahler, Edward	manufact'r	14	1	f	
1979		Mahler, Alexander	manufact'r	14	1	f	
1970		O'Leary, Margaret	spinster	14	1	f	1
1971		O'Leary, Julia	spinster	14	1	f	1
1975		O'Leary, Mrs L	widow	14	1	f	29
1988		Peart, Mrs Annie	widow	14	2	f	29
107		Richards, Thomas		11	1	f	
1489		Richards, Mrs John	widow	11	2	t	1
1529		Richardson, F J	gentleman	12	b f	f	17
2008		Stewart, Mrs F	widow	14	1	f	1
177		Taylor, John		11	8	f	29
1768		Waring, Mrs Mary	widow	14	2	f	1
1764		Wright, Mrs Sarah	widow	18	2	f	1
2014		Wonnacott, Mrs	widow	14	1	f	
2015		Wonnacott, John S	merchant	14	1	f	

Voters' List for 1898.

—: Municipality of —:

* Township of Pickering *

8 Polling Sub-Division No. 2.

Comprising all the lots from No. 11 to No. 14 inclusive, from the Lake to the Fourth Concession Line.

PART III.—Persons entitled to vote at Elections to the Legislative Assembly only.

NO. ON ROLL.	JUROR.	NAME.	OCCUPATION	LOT	CON		P. O.
157		Badgerow, Seth	laborer	13	9	m f	6
401		Dickie, Alexander	laborer	11	1	m f	1
493		Fawcett, William	laborer	14	1	m f	1
507		Firth, William B	teacher	11	2	m f	1
1921		Gilders, George	laborer	14	1	m f	1
715		Hartrick, Robert	laborer	12	bf	m f	1
1943		Horn, John B	millar	14	1	m f	1
1993		Henderson, William	laborer	14	1	m f	1
846		Jackman, David	teacher	13	2	m f	1
988		Law, Alfred	laborer	12	1	m f	1
941		Luton, James	teacher	13	2	m f	1
965		Lee, Peter	laborer	14	3	m f	1
1954		Marritt, Isaac	laborer	14	1	m f	1
1965		Murkar, John	teacher	14	1	m f	1
1543		Storms, Marshall	R R	14	1	m f	1
2010		Savage, Henry	machinist	14	1	m f	1
2027		Thexton, Ross	printer	14	2	m f	1

P. O.
1
29
29
1
17
1
29
1
1

Voters' List for 1898.

Municipality of the

Township of Pickering

Polling Sub-Division No. 3.

Comprising all the Lots from No. 15 to No. 18 inclusive, from the Lake to the Fourth Concession Line.

PART I.—List of persons entitled to vote at both Municipal Elections and Elections to the Legislative Assembly.

NO. ON ROLL.	JUROR	NAME.	OCCUPATION	LOT	CON			
17	j	Allaway, William	cooper	16	2	f	m	f 1
18	j	Allaway, Alfred	cooper	16	2	f	m	f 1
24	j	Annan, John	farmer	17	1	f	m	f 1
1880	j	Andrew, William	laborer	15	2	+	m	f 1
82	j	Brien, James	farmer	15	2	f	m	f 1
91	j	Burrell, John A	farmer	17	2	+	m	f 1
121	j	Banks, William H	farmer	16	2	f	m	f 1
123	j	Banks, Lorenzo	farmer	15	2	+	m	f 1
125	j	Barker, Joseph S	millar	16	2	+	m	f 1
166	j	Badgerow, Wilfred	farmer	15	2	+	m	f 1
1885	j	Bunting, R A	postmaster	15	2	+	m	f 1
1887	j	Bateman, R M	physician	15	2	f	m	f 1
1888	j	Burt, Richard	gentleman	15	2	f	m	f 1
1889	j	Bundy, J H	tin-smith	15	2	f	m	f 1
263	j	Clark, William	farmer	15	1	f	m	f 1
264	j	Clark, William J	farmer	15	1	f	m	f 1
266	j	Corbett, William	farmer	17	1	+	m	f 1
270	j	Cain, Timothy	laborer	16	1	f	m	t 1
276	j	Courtice, W L	farmer	15	b f	t	m	f 1

ROLLING SUB-DIVISION No. 8.

19

NO. ON ROLL.	JUROR.	NAME	OCCUPATION	LOT	CON	P. O.
802	j	Calvert, Hamilton	farmer	17	2	m f 1
817	j	Cowan, George jr	farmer	18	2	m f 1
822	j	Connor, J H	farmer	18	3	m f 1
823	j	Connor, Thomas	farmer	18	3	m f 1
1890		Cooper, J W D	alergyman	15	1	m f 1
1892	j	Cowan, George S	shoemaker	15	2	m f 1
1893		Clark, W J	publisher	15	2	m f 1
1896	j	Dickie, John	merchant	15	2	m f 1
1899	j	Dunbar, W T	merchant	15	2	m f 1
1980		Dillingham, Robert	undertaker	15	1	m f 1
1492	j	Fawcett, George	laborer	18	2	m f 1
1910		Findlay, Alexander	millar	15	2	m f 1
1911	j	Fawkes, William H	laborer	16	1	m f 1
1918	j	Falconer, Alexander	harnessmk	15	2	m f 1
541	j	Gornley, James	farmer	17	b f	m f 1
542	j	Gornley, Joseph	farmer	17	b f	m f 1
543	j	Gornley, Daniel	farmer	17	b f	m f 1
545	j	Gornley, Robert J	farmer	17	b f	m f 1
546		Gornley, John	farmer	17	b f	m f 1
547	j	Gornley, Thomas A	farmer	17	b f	m f 1
548	j	Gornley, William	farmer	17	b f	m f 1
549	j	Gornley, Edward	farmer	17	b f	m f 1
550	j	Gornley, Samuel	farmer	17	b f	m f 1
553	j	Gornley, Arthur	farmer	17	b f	m f 1
554	j	Gornley, Richard	farmer	17	b f	m f 1
585		Gea, John E	com mer	15	1	m f 1
586	j	Gea, Frank	farmer	15	1	m f 1
587	j	Gillman, John	farmer	18	2	m f 1
606	j	Goodwin, John	farmer	16	3	m f 1
1918		Gordon, John	carpenter	15	1	m f 1
1922	j	Gordon, James	hotel k'per	15	2	m f 1
1923		Gallagher, E F	alergyman	15	1	m f 1
1924	j	Greig, T A	agent	15	2	m f 1

POLLING SUB-DIVISION No. 3.

NO. ON ROLL.	JUROR.	NAME.	OCCUPATION	LOT	CON			
686		Holt, George	farmer	16	1	f	m f	1
687	j	Holt, Charles	farmer	16	1	f s	m f	1
712	j	Hopkins, W H	V S	15	2	t	m f	1
714	j	Haight, Edwood C	farmer	15	8	f	m f	1
1982		Herks, Shaderick	R R	16	2	t	m f	1
1984	j	Hilts Alonza	merchant	15	2	f	m f	1
1988		Harrigan, William	laborer	16	2	f	m f	1
1989	j	Ham, Wm G	wright	15	2	f	m f	1
884	j	Jones, Uriah	farmer	18	1	f	m f	1
1947		Jacques, John	laborer	16	2	f	m f	1
1940		King, Charles	butcher	15	2	f	m f	1
927	j	Linton, John R	farmer	16	b f	f	m f	1
985		Leslie, John	shoemaker	15	1	f	m f	1
942		Leech, William	laborer	15	1	t	m f	1
957		Law, Thomas	farmer	15	2	t	m f	1
961		Linton, James	carpenter	16	2	f	m f	1
1950	j	Logan, William	merchant	15	2	f	m f	1
1951	j	Logan, Walter	clerk	15	2	f	m f	1
1958		Law, John W	miller	15	1		m f	1
1064		Mathews, Frank	laborer	16	2	t	m f	1
1071		McKeown, George	weaver	16	2	f	m f	1
1078	j	Moore, Henry	farmer	18	2	f	m f	1
1089		Moore, Henry	laborer	17	3	f	m f	1
1969	j	McGinty, Edward	mason	15	1	f	m f	1
1976	j	Moore, Richard	smith	15	2	f	m f	1
1977	j	Mullett, Alfred	farmer	15	1	f	m f	1
1964		Morrissey, James	mason	15	1	f	m f	1
1298	j	Pollard, Richard	farmer	15	b f	t	m f	1
1844	j	Percy, John	farmer	15	3	f	m f	6
1997	j	Peak, William	liveryman	15	1	t	m f	1
1460	j	Reddin, Timothy	farmer	18	3	t	m f	6
1461		Reddin, John	farmer	18	3	f	m f	6
1699	j	Rogers, Wm D	baker	15	2	f	m f	1

Voters' List for 1898.

—: Municipality of the —:

* Township of Pickering *

Polling Sub-Division No. 3.

Comprising all the Lots from No. 15 to No. 18 inclusive, from the Lake to the Fourth Concession Line.

PART II.—Persons entitled to vote at Municipal Elections only.

NO. ON ROLL.	JUROR	NAME.	OCCUPATION	LOT	CON		P. C.
1875		Abray, Mrs John	widow	15	1	f	1
1877		Abbott, Byron		16	2	f	
1879		Andrew, Mrs Jas	widow	15	2	f	1
816		Comiskey, Mrs	widow	18	3	f	6
2025		Clendennan, Henry		15	2	f	29
1881		Dowsell, A B	merchant	15	2	f	29
1998		Decker, Geo W		15	1	f	
406		Decker, Chas F		17	2	f	17
1904		Deacon, Mr		15	2	f	
1912		Decker, D M	gaoler	16	1	f	17
943		Datoe, Albert		15	1	f	30
551		Gormley, Margaret	spinster	17	b f	f	1
555		Gormley, Mrs Eliz	widow	17	b f	f	1
597		Gibbons, Mrs M	widow	16	1	f	1
167		Haight, Seneca		15	3	f	
544		Hick, Benjamin		16	b f	f	29
1935		Head, Mrs Emily	widow	15	2	f	1
1936		Head, Etta	spinster	15	2	f	1
1945		Hodgson, Wm		16	2	f	29

POLLING SUB-DIVISION No. 3.

23

NO. ON ROLL.	JUROR.	NAME.	OCCUPATION	LOT	CON		P. O.
324		Knowles, Richard		17	2	f	20
124		Linton, Isaac		15	2	f	
1960		Mayer, Mrs	widow	15	1	f	1
1961		McCausland, Mary	spinster	15	2	f	1
1962		McCausland, Sasannah	spinster	15	2	f	1
1974		O'Connor, C A	spinster	15	1	f	
1271		O'Leary, William	hotelkeeper	16	1	f	34
1985		Pollard, Mrs	widow	15	2	f	1
1986		Pirie, Mrs	widow	15	2	f	1
265		Ryan, John		16	1	f	29
1258		Reddin, Daniel		18	1	f	29
1299		Roach, W		15	b f	f	
1995		Reid, Mrs M	widow	16	2	f	29
277		Squire, William		15	b f	f	
2001		Stewart, Mrs John	widow	15	1	f	1
1542		Salter, Isaac		18	b f	f	30
1566		Spink, John L	millar	16	2	f	29
607		Varty, Mrs	widow	16	3	f	1
808		Westlake, Mrs	widow	17	2	f	29
2019		Willson, R S		15	2	f	29

ing *

om the Lake

	P. O.
f	1
f	
f	1
f	6
f	29
f	29
f	
f	17
f	
f	17
f	
f	30
f	1
f	
f	1
f	1
f	
f	29
f	
f	1
f	1
f	
f	29

Voters' List for 1898.

—: Municipality of the —:

* Township of Pickering *

Polling Sub-Division No. 3.

Comprising all the lots from No. 15 to No. 18 inclusive, from the Lake to the Fourth Concession Line.

PART III.—Persons entitled to vote at Elections to the Legislative Assembly only.

NO. ON ROLL.	JUROR.	NAME.	OCCAPATION	LOT	CON		5
18		Allin, George	laborer	15	1	m f	1
19		Allaway, Rupert	cooper	16	2	m f	1
20		Allaway, James	cooper	16	2	m f	1
62		Boyes, Henry	laborer	15	2	m f	1
298		Crow, Geo T	laborer	15	2	m f	1
1908		Douglas, Richard A	clerk	15	2	m f	1
481		Found, Thomas	laborer	16	b f	m f	1
560		Gerry, Samuel	laborer	16	b f	m f	1
1920		Gordon, W J	barber	15	2	m f	1
708		Hall, George	laborer	18	1	m f	1
889		King, James jr	laborer	17	1	m f	1
989		Latchett, John	laborer	15	b f	m f	1
1968		Margaoh, Nelson	tailor	15	1	m f	1
1072		Morrish, Thomas	laborer	16	1	m f	1
1881		Payne, Henry	laborer	15	8	m f	1
1628		Shepherd, Wm J	laborer	17	1	m f	1
1772		Walton, Russell	smith	16	1	m f	1

Voters' List for 1898.

— Municipality of the —

* Township of Pickering *

Polling Sub Division No. 4.

Comprising all the Lots from No. 19 to No. 26 inclusive, from the Lake to the Fourth Concession Line.

PART I.—List of persons entitled to vote at both Municipal Elections and Elections to the Legislative Assembly.

	P. C.	NO. ON ROLL.	JUKOR	NAME.	OCCUPATION	LOT	CON		P. C.	
n f	1	1	j	Andrew, James	farmer	19	b f	f	m f	1
n f	1	11	j	Anderson, Robert	farmer	26	1	f	m f	2
n f	1	16	j	Annan, Andrew	farmer	22	b f	f	m f	2
n f	1	81	j	Ackford, Albert	laborer	24	2	f	m f	2
n f	1	82		Arrowsmith, Elijah	farmer	21	1	t	m f	1
n f	1	60		Booth, Alfred	laborer	25	1	t	m f	2
n f	1	79		Bunker, W W	farmer	20	1	f	m f	1
n f	1	80	j	Bunker, Wm H	farmer	20	1	f	m f	1
n f	1	81		Bush, Brentwood	farmer	23	1	f	m f	2
n f	1	108	j	Boyes, Arthur	farmer	25	3	t	m f	6
n f	1	150		Burkholder, A C	laborer	26	2	t	m f	7
n f	1	151	j	Burkholder, Jess H	laborer	26	2	t	m f	7
n f	1	185	j	Brignall, Amos	farmer	20	3	t	m f	6
n f	1	249	j	Conway, Gregory	laborer	24	1	f	m f	2
n f	1	258		Chisholm, John	clergyman	25	1	t	m f	2
n f	1	269	j	Campbell, William	smith	25	1	f	m t	2
n f	1	278		Creighton, John	farmer	25	1	t	m f	2
n f	1	279	j	Creighton, John jr	farmer	25	1	t	m f	2
n f	1	290		Coutts, Thomas	carpenter	24	2.	f	m f	2

POLLING SUB DIVISION No. 4.

NO. ON ROLL.	JUROR.	NAME.	OCCUPATION	LOT	CON		♂
295	j	Campbell, Edward	farmer	25	2	f	m f 2
312		Cowan, George	farmer	19	3	f	m f 6
313	j	Cowan, Thomas	farmer	19	3	f	m f 6
314	j	Cowan, Joseph	farmer	19	3	f	m f 6
315	j	Cowan, James	farmer	19	3	f	m f 6
384	j	Downing, George	farmer	21	b f	t	m f 1
387	j	Deverell, Robert	farmer	19	1	f	m f 1
388		Dunbar, William	gentleman	25	1	f	m f 2
389		Dales, John R	physician	25	1	Income	m f 2
391		Dunn, John	laborer	22	3	t	m f 1
399	j	Dillingham, Calvin	farmer	19	2	f	m f 1
420		Dwyer, John	laborer	20	2	f	m f 1
421	j	Dwyer, Michael	laborer	20	2	f	m f 1
1558		Decker, David B	gentleman	21	2	f	m f 1
455		Edwards, William	carpenter	23	b f	f	m f 2
488	j	Falconer, Robert	farmer	25	1	f	m f 2
489	j	Falconer, George	harnessmk	25	1	f	m f 2
490	j	Fawcett, Benjamin	farmer	22	1	t	m f 1
496	j	Ferguson, James	farmer	26	2	f	m f 2
558	j	Gormley, Joseph	hotel k'per	23	1	t	m f 2
563	j	Gordon, Joseph	farmer	19	b f	f	m f 1
564	j	Gordon, Alexander	farmer	19	b f	f	m f 1
567		Greenbury, Frederick	laborer	25	1	t	m f 2
568		Greenbury, David	laborer	25	1	t	m f 2
569		Greenbury, Burt	laborer	25	1	t	m f 2
580	j	Grant, Louis M	wright	25	1	f	m f 2
591	j	Courlie, Louis E	farmer	24	2	f	m f 2
596	j	Gilchrist, James	farmer	26	2	f	m f 7
669		Hilts, Wesley	sailor	23	b f	t	m f 2
672		Hilts, Hezekiah	laborer	23	b f	t	m f 2
674		Hadley, James	fisherman	23	b f	f	m f 2
689		Henderson, Thomas	carpenter	25	1	f	m f 2
691	j	Howlett, Albert	laborer	25	1	t	m f 2

POLLING SUB-DIVISION No. 4.

27

			NO. ON ROLL.	JUROR.	NAME	OCCUPATION	LOT	CON		P. O.
	m f	2	695	j	Heard, Aaron	R R	25	1	t	m f 2
	m f	6	698	j	Henderson, William	carpenter	25	1	f	m f 2
	m f	6	702	j	Holbourn, Thos W	gentleman	25	1	f	m f 2
	m f	6	728		Hamilton, John	laborer	20	3	t	m f 1
	m f	6	893	j	King, Samuel	farmer	24	1	t	m f 2
	m f	1	894	j	King, Robert	farmer	24	1	t	m f 2
	m f	1	895	j	King, Alexander	farmer	24	1	t	m f 2
	m f	2	909		King, Enoch	laborer	24	2	f	m f 2
ome	m f	2	910		King, Henry	laborer	24	2	f	m f 2
	m f	1	911	j	Knox, Thomas A	farmer	19	3	f	m f 6
	m f	1	917		King, Charles J	laborer	25	3	f	m f 7
	m f	1	936	j	Leng, George	farmer	21	1	f	m f 1
	m f	1	937		Lamoreaux, Jas A	carpenter	26	1	f	m f 2
	m f	1	978	j	Lamoreaux, T W	farmer	22	3	t	m f 6
	m f	2	1034	j	Marquis, Thomas B	farmer	19	b f	f	m f 1
	m f	2	1035	j	Marquis, Herbert	farmer	19	b f	f	m f 1
	m f	2	1036	j	Marquis, William	farmer	19	b f	f	m f 1
	m f	1	1037	j	Mansfield, Thomas	fisherman	23	b f	f	m f 2
	m f	2	1043	j	Morecombe, William	farmer	20	b f	t	m f 1
	m f	2	1051		Moody, Thomas	grain buyer	22	1	Income	m f 2
	m f	1	1054		Morrison, Henry	farmer	24	b f	f	m f 2
	m f	1	1055	j	Morrison, Henry jr.	farmer	24	b f	f s	m f 2
	m f	2	1056	j	Morrison, Peter	farmer	24	b f	f s	m f 2
	m f	2	1057	j	Morrison, Fleming	farmer	24	b f	f s	m f 2
	m f	2	1058	j	Morrison, David	farmer	24	b f	f s	m f 2
	m f	2	1065	j	McConochie, Samuel	farmer	26	1	f	m f 2
	m f	2	1221		Nicholson, Samuel	R R	24	1	Income	m f 2
	m f	7	1253		O'Brien, Matthew	sailor	23	b f	f	m f 2
	m f	2	1269		O'Brien, William	sailor	23	b f	f	m f 2
	m f	2	1275		O'Neal, David	farmer	19	3	f	m f 1
	m f	2	1296	j	Prouse, James	farmer	19	b f	t	m f 2
	m f	2	1305		Parker, George	postmaster	25	1	f	m f 2
	m f	2	1306	j	Parker, John	merchant	25	1	f	m f 2

NO. ON ROLL.	JUROR.	NAME.	OCCAPATION	LOT	CON			
1807	j	Pizer, Isaac	laborer	25	1	f	m f	2
1817		Palmer, James L	farmer	20	2	f	m f	1
1818	j	Palmer, Charles S	farmer	22	2	f	m f	1
1830		Palmer, John	laborer	19	3	f	m f	1
1832	j	Pugh, David E	farmer	19	2	t	m f	1
1833		Peebles, Alexander	farmer	23	3	t	m f	6
1884	j	Peebles, William	farmer	23	3	t	m f	6
1445	j	Riley, Joseph	farmer	24	2	t	m f	2
1447		Rae, William	fisherman	23	b f	t	m f	2
1468	j	Reynolds, Henry	farmer	24	3	t	m f	6
1514		Stoner, Abram	laborer	22	b f	f	m f	2
1515		Sparks, William	har master	23	b f	f	m f	2
1516		Stoner, Edward	laborer	22	b f	t	m f	2
1524	j	Symons, Joseph	farmer	22	b f	t	m f	2
1536		Sanders, Thomas	farmer	25	1	t	m f	2
1537	j	Sanders, John	farmer	25	1	f &	m f	2
1538	j	Sanders, Joseph	farmer	25	1	f s	m f	2
1546	j	Sleep, William	farmer	19	1	f	m f	1
1547	j	Sleep, Edward	farmer	19	1	f s	m f	1
1548	j	Sleep, Walter	farmer	19	1	f s	m f	1
1555		Short, John	laborer	24	1	t	m f	2
1557	j	Stotts, George L	farmer	21	2	t	m f	1
1563	j	Sleep, Francis	farmer	20	2	t	m f	1
1570		Spencer, Frank	laborer	25	1	t	m f	2
724		Stoyer, Samuel	gentleman	26	3	f	m f	7
1522	j	Smith, George	farmer	26	b f	f	m f	2
1652		Tripp, John	gentleman	25	1	f	m f	2
1666	j	Thompson, William	farmer	26	2	t	m f	7
1692	j	Teety, Patrick	farmer	26	3	f	m f	7
1744	j	Westgate, Samuel	farmer	20	b f	f	m f	1
1748	j	White, George	farmer	26	1	f	m f	2
1756	j	Wood, George	farmer	26	1	t	m f	2
1757	j	Wood, Robert	farmer	26	1	t	m f	2

POLLING SUB-DIVISION No. 4.

29

NO. ON ROLL.	JUROR.	NAME	OCCUPATION	LOT	CON		o a
1759	j	White, James	farmer	21	2	t	m f 1
1778	j	White, William	farmer	26	3	f	m f 6
1788		White, James	farmer	21	3	f	m f 6

m f 2
 m f 1
 m f 1
 m f 1
 m f 1
 m f 1
 m f 6
 m f 6
 m f 2
 m f 2
 m f 6
 m f 2
 m f 2
 m f 2
 m f 2
 m f 2
 m f 2
 m f 2
 m f 1
 m f 1
 m f 1
 m f 1
 m f 1
 m f 2
 m f 1
 m f 1
 m f 1
 m f 2
 m f 2
 m f 7
 m f 2
 m f 2
 m f 7
 m f 7
 m f 1
 m f 2
 m f 2
 m f 2

Voters' List for 1898.

—: Municipality of the —:

* Township of Pickering *

Polling Sub-Division No. 4.

Comprising all the lots from No. 19 to No. 26 inclusive, from the Lake to the Fourth Concession Line.

PART II.—Persons entitled to vote at Municipal Elections only.

NO. ON ROLL.	JUROR.	NAME.	OCCUPATION	LOT	CON		
10		Anderson, Mrs Wm	widow	26	1		2
14		Avis, J H	hotelkeeper	23	b f	f	29
80		Ashbridge, Levi		22	3	f	29
77		Brown, Janet	spinster	25	1	f	2
497		Brand, Margaret	spinster	26	2	f	1
729		Burk, Bridget	widow	20	3	f	
888		Burrell, Charles		23	b f	f	29
1448		Bellchamber, Wm		23	b f	f	
1335		Cochrane, Mrs E A	widow	23	3	f	17
675		Fletcher, William		23	b f	f	
565		Gordon, Sarah	spinster	19	b f	f	1
566		Gordon, Mrs Jos	widow	19	b f	f	1
571		Gibson, Margaret	widow	23	1	f	2
590		Gourlie, Mrs M	widow	24	2	f	2
1525		Jardiner, Mrs	widow	22	b f	f	
491		Haney, Mrs	widow	22	1	f	
668		Hilts, Mrs James	widow	22	b f	f	2
716		Holmes, Mrs	widow	26	1	f	2
912		Knox, Mrs	widow	19	3	f	6

POLLING SUB DIVISION No. 4.

31

NO. ON ROLL.	JUROR.	NAME.	OCCAPATION	LOT	CON		
979		Lamoreaux, J W	bookkeeper	22	8	f	
980		Lamoreaux, S W	physician	22	8	f	
1289		Love, Robert W		23	b f	f	29
1290		Love, Spencer		23	b f	f	29
1288		Matthews, W D	grain mht	23	8	f	29
186		O'Connor, John		20	b f	f	17
1256		O'Connor, Helen	spinster	19	b f	f	1
1257		O'Connor, Kate	spinster	19	8	f	1
1294		Palmer, Mrs W	widow	23	b f	f	17
1297		Parker, Thomas	solicitor	19	1	f	
1308		Pizer, Mrs Wm	widow	25	1	f	2
1320		Palmer, Alex		23	2	f	31
1431		Remmer, Mrs	widow	23	b f	f	1
1432		Remmer, William	teacher	23	b f	f	
1517		Stoner, Frederiek		23	b f	f	
1553		Secker, Sarah	widow	22	1	f	2
33		Tripp, John		21	b f	f	
78		Thompson, Esther	spinster	25	1	f	2
385		Tripp, Ira D		21	b f	f	
1039		Tripp, Mrs H	widow	23	b f	f	29
1446		Tripp, Mrs Joshua	widow	24	2	f	
1675		Taylor, Elizabeth	widow	23	b f	f	24
1695		Taylor, John F	manufact'r	22	3	f	29
1044		Welsh, Mrs	widow	20	b f	f	29
1464		Webb, Frank	solicitor	24	2	f	
1743		Westgate, Mrs	widow	20	b f	f	1
1758		Wood, Mrs Mary	widow	26	1	f	2
1770		Whaley, Frank	V S	19	2	f	29
1771		Watson, A G		24	2	f	29

ring *

from the Lake

f 2
 f 29
 f 29
 f 2
 f 1
 f 29
 f 17
 f 1
 f 1
 f 2
 f 2
 f 6

Voters' List for 1898.

—: Municipality of the —:

* Township of Pickering *

Polling Sub Division No. 4.

Comprising all the Lots from No. 19 to No. 26 inclusive, from the Lake to the Fourth Concession Line.

PART III.—Persons entitled to vote at Elections to the Legislative Assembly only.

NO. ON ROLL.	JUROR	NAME.	OCCUPATION	LOT	CON		♂
8		Andrew, Thomas	laborer	19	b f	m f	1
12		Annan, Thomas	laborer	25	b f	m f	2
28		Armstrong, George	laborer	22	3	m f	6
29		Ashley, Joseph	laborer	22	2	m f	1
76		Bell, William	laborer	23	b f	m f	2
93		Blue, John	teacher	26	1	m f	2
298		Creighton, Robert	laborer	19	2	m f	1
400		Dunn, Douglas	laborer	22	1	m f	1
422		Dwyer, John jr	laborer	20	2	m f	1
423		Dwyer, James	laborer	20	2	m f	1
432		Dwyer, Edward	laborer	20	2	m f	1
594		Gillespie, Charles	laborer	23	2	m f	2
887		King, James	laborer	23	b f	m f	2
948		Long, Chance	laborer	25	1	m f	2
1045		Mansfield, Charles	laborer	21	1	m f	1
1050		McCabe, John	laborer	26	b f	m f	2
1062		Morrish, William	laborer	23	b f	m f	2
1066		McGinty, John	mason	26	2	m f	2
1268		O'Brien, John	laborer	24	1	m f	2

POLLING SUB-DIVISION No. 4.

83

NO. ON ROLL.	JUROR.	NAME.	OCCAPATION	LOT	CON		P. O.
1438		Ray, James	laborer	20	1	m f	1
1534		Stoner, George	laborer	22	b f	m f	2
1535		Stoner, Ira	laborer	22	b f	m f	2
1559		Stewart, Robt M	teacher	19	1	m f	1
1562		Shepherd, Alex	carpenter	25	1	m f	2

ring *

from the Lake

lative Assembly

	o
m f	1
m f	2
m f	6
m f	1
m f	2
m f	2
m f	1
m f	1
m f	1
m f	1
m f	1
m f	2
m f	2
m f	2
m f	1
m f	2
m f	2
m f	2

Voters' List for 1898.

—: Municipality of the —:

* Township of Pickering *

Polling Sub-Division No. 5.

Comprising all the lots from No. 27 to No. 95 inclusive, from the Lake to the Fourth Concession Line.

PART I.—List of persons entitled to vote at both Municipal Elections and Elections to the Legislative Assembly.

NO. ON ROLL.	JUROR	NAME.	OCCUPATION	LOT	CON	P. O.	
4	j	Annan, Peter	farmer	28	b f	f	
5		Annan, John	farmer	28	b f	f	m f 2
6	j	Annis, Chas A	farmer	35	b f	f	m f 2
7	j	Annis, Chas A jr	farmer	35	b f	f	m f 4
25		Allison, Andrew	farmer	28	2	f	m f 4
26	j	Allison, Andrew jr	farmer	28	2	f	m f 2
1083		Anderson, John	farmer	27	1	f	m f 2
58		Black, Joseph	laborer	32	b f	f	m f 3
59		Black, Robert	laborer	32	b f	t	m f 3
83	j	Birns, Thomas	farmer	29	1	t	m f 2
122	j	Barkey, Martin	farmer	34	2	f	m f 7
154	j	Burkholder, Noah	farmer	35	3	f	m f 7
240	j	Clark, Charles	farmer	29	b f	t	m f 2
242	j	Cowan, William	farmer	30	b f	f	m f 2
243	j	Chester, Thomas	farmer	34	b f	f	m f 4
244	j	Chester, William	farmer	34	b f	f	m f 20
245	j	Crust, John	farmer	35	b f	t	m f 3
247		Carson, Thomas G	laborer	35	b f	f	m f 4
256	j	Collins, William	farmer	29	b f	t	m f 2

POLLING SUB-DIVISION No. 5.

85

NO. ON ROLL.	JUROR.	NAME	OCCUPATION	LOT	CON		o
274		Camps, George	R R	35	b f	t	m f 4
281	j	Courtney, A C	farmer	30	1	t	m f 2
283	j	Carson, Robert	farmer	28	1	t	m f 2
294		Chapman, James	laborey	31	2	f	m f 7
296	j	Clark, Robert	farmer	35	2	f	m f 7
297	j	Clark, John	farmer	35	2	f	m f 7
306	j	Carter, Benjamin	farmer	33	2	t	m f 7
308		Cober, John	farmer	33	3	f	m f 7
309	j	Cober, Jesse	farmer	33	3	f	m f 7
382	j	Dixon, William	farmer	29	b f	t	m f 2
409	j	Davidson, George	farmer	30	3	f	m f 7
410	j	Davidson, James	farmer	29	3	f	m f 7
411	j	Davidson, Robert	farmer	30	3	f	m f 7
482	j	Found, James	farmer	27	b f	t	m f 2
486	j	Found, Robert	farmer	29	1	t	m f 2
540		Gosline, Isaac	R R	35	b f	f	m f 4
572	j	Graham, John	farmer	35	b f	f	m f 3
573	j	Graham, John jr	farmer	35	b f	f	m f 3
574	j	Graham, John	farmer	33	b f	f	m f 3
581		Gilmer, William	farmer	28	1	f	m f 2
582	j	Gilmer, Robert	farmer	28	1	f s	m f 2
583	j	Gilmer, William J	farmer	28	1	f s	m f 2
584	j	Gilmer, Dayid	farmer	28	1	f s	m f 2
595		Gilchrist, William	farmer	27	2	f	m f 7
598	j	Gates, George	laborer	31	3	f	m f 7
599		Garland, Robert	farmer	33	3	f	m f 7
600	j	Garland, John	farmer	33	3	f	m f 7
601	j	Garland, James	farmer	33	3	f	m f 7
602	j	Garland, Robert jr	farmer	33	3	f	m f 7
605	j	Green, John	merchant	31	3	t	m f 7
671	j	Holmes, Cuthbert W	farmer	30	b f	f	m f 2
682	j	Holbourn, S W	farmer	32	b f	t	m f 3
683		Houlbourn, Thomas	gentleman	32	b f	f	m f 3

ring *

om the Lake

ions and Elec.

o.
a.
m f 2
m f 2
m f 4
m f 4
m f 2
m f 2
m f 2
m f 3
m f 3
m f 2
m f 7
m f 7
m f 2
m f 2
m f 4
m f 20
m f 3
m f 4
m f 2

POLLING SUB-DIVISION No. 5.

NO. ON ROLL.	JUROR	NAME.	OCCUPATION	LOT	CON			o. a.
690	j	Hedges, George	farmer	32	1	f	m f	7
697	j	Hollinger, George	farmer	32	1	f	m f	7
704	j	Hollinger, William	farmer	32	2	f	m f	7
705	j	Henderson, John	farmer	33	2	f	m f	7
722		Hilts, William	farmer	28	3	f	m f	7
723	j	Hilts, Joseph	farmer	28	3	t	m f	7
832		Judd, Francis	laborer	29	2	f	m f	7
837	j	Jackson, Arthur	farmer	34	3	f	m f	7
890	j	Kinloch, George	farmer	31	b f	f	m f	3
897		Kerr, John	farmer	29	1	f	m f	2
898	j	Kerr, William	farmer	29	1	f	m f	2
928	j	Leng, Henry	R R	35	b f	f	m f	4
929		Laskey, Thomas	gentleman	35	b f	f	m f	4
944	j	Lacey, Thomas	farmer	31	1	f	m f	2
945	j	Lacey, William	farmer	31	1	f s	m f	2
947	j	Lotton, William	farmer	33	1	f	m f	3
952	j	Lotton, Marshall	farmer	30	1	t	m f	2
953		Lotton, James	farmer	30	1	t	m f	2
954	j	Lotton, Jonathan	farmer	30	1	t	m f	2
955	j	Lotton, John	farmer	30	1	t	m f	2
964	j	Laughlin, James	farmer	34	2	f	m f	7
966	j	Lawson, David	farmer	29	3	f	m f	7
967	j	Lawson, Alexander	farmer	29	3	f	m t	7
968	j	Laughlin, Joseph P	farmer	28	3	t	m f	7
1040	j	Marks, Peter	farmer	30	b f	t	m f	2
1041	j	Marks, James	farmer	30	b f	f s	m f	2
1047	j	Mitchell, William	farmer	31	b t	t	m f	2
1059	j	McIntosh, John	farmer	32	b f	t	m f	4
1060	j	McIntosh, Hugh	farmer	32	b f	t	m f	4
1063		Murray, John A	laborer	27	b f	f	m f	2
1074	j	McCrae, James	farmer	34	2	t	m f	7
1075	j	McCrae, Francis	farmer	34	2	t	m f	7
1079	j	Mitchell, John	farmer	27	1	t	m f	2

POLLING SUB-DIVISION No. 5.

37

		P. O.			POLLING SUB-DIVISION No. 5.					
		P. O.	NO. ON ROLL.	JUROR.	NAME	OCCUPATION	LOT	CON		
m f	7		1080	j	Mitchell, Samuel	farmer	27	1	t	m f 2
m f	7		1081	j	Mitchell, Joseph	farmer	27	1	t	m f 2
m f	7		1292		Philcox, James	laborer	33	b f	f	m f 3
m f	7		1293		Portwine, Francis	fisherman	35	b f	f	m f 4
m f	7		1300	j	Parsons, Josiah	farmer	33	b f	t	m f 3
m f	7		1301	j	Parsons, Levi	farmer	33	b f	f s	m f 3
m f	7		1309	j	Pearce, Roger	farmer	33	1	f	m f 3
m f	7		1310	j	Pearce, Joseph	farmer	33	1	f	m f 3
m f	3		1311	j	Pearce, John	farmer	33	1	f	m f 3
m f	2		1315	j	Pearce, William	mason	30	1	f	m f 3
m f	2		1321		Petty, Charles	manufact'r	31	2	f	m f 7
m f	4		1322	j	Petty, Wm P	farmer	35	2	t	m f 7
m f	4		1324	j	Poynter, H E	smith	31	2	f	m f 7
m f	2		1326		Petty, Charles K	laborer	30	2	t	m f 7
m f	2		946		Pickens, Thomas	gentleman	31	2	f	m f 2
m f	3		1435	j	Richards, James	farmer	27	2	t	m f 2
m f	2		1458	j	Reesor, John B	farmer	34	3	t	m f 7
m f	2		1468	j	Roach, Frederick	farmer	30	2	f	m f 7
m f	2		1469	j	Roach, Wesley J	farmer	30	2	f	m f 7
m f	2		1370	j	Roach, Malcolm F	farmer	30	2	f	m f 7
m f	7		1518		Stotts, Dewitt	farmer	35	b f	f	m f 20
m f	7		1519	j	Stotts, William	farmer	35	b f	f	m f 20
m f	7		1520	j	Stotts, Lorenzo	farmer	35	b f	f	m f 20
m f	7		1545	j	Strickland, Owen	farmer	28	b f	f	m f 2
m f	2		1561	j	Sinclair, John A	farmer	33	1	f	m f 7
m f	2		1567		Smith, Charles	farmer	32	2	f	m f 7
m f	2		1568	j	Smith, John	farmer	23	2	f	m f 7
m f	4		1569	j	Spencer, William	ditcher	31	2	f	m f 7
m f	4		1572	j	Stover, C W	farmer	28	3	f	m f 7
m f	2		1573	j	Stover, Alfred	farmer	27	3	t	m f 7
m f	7		1583	j	Stover, Benjamin	farmer	29	3	f	m f 7
m f	7		1651	j	Thom, Alexander	farmer	28	1	f	m f 2
m f	2		1658	j	Thom, William	farmer	28	1	t	m f 2

POLLING SUB DIVISION No. 5.

No. ON ROLL.	JUROR.	NAME.	OCCUPATION	LOT	CON		P. O.
1668	j	Thom. James	farmer	26	2	t	m f 7
1671	j	Toyne, George	farmer	34	1	t	m f 8
1676		Taylor, James C	farmer	29	2	f	m f 7
1677	j	Taylor, William J	farmer	35	3	f	m f 7
1681		Taylor, William	farmer	29	2	f	m f 7
1693	j	Todd, James	farmer	32	3	f	m f 7
1741	j	Vanhorne, William	farmer	35	1	f	m f 3
1870	j	Yates, Thomas	R R	35	b f	f	m f 4

Voters' List for 1898.

—: Municipality of the —:

* Township of Pickering *

Polling Sub-Division No. 5.

Comprising all the lots from No. 27 to No. 35 inclusive, from the Lake to the Fourth Concession Line.

PART II.—Persons entitled to vote at Municipal Elections only.

NO. ON ROLL.	JUROR	NAME.	OCCUPATION	LOT	CON		5
8		Annis, Andrew	farmer	35	1	f	4
9		Annis, Jeremiah	farmer	35	1	f	4
483		Annis, Levi		27	b f	f	
1048		Allison, Mrs Wm	widow	31	b f	f	2
1302		Annis, David	farmer	33	b f	f	24
248		Currah, Mary	spinster	34	b f	f	3
255		Carter, R C		35	b f	f	
390		Dixon, Mrs E	widow	31	2	f	7
284		Gilmer, Rose A	spinster	28	1	f	15
575		Graham, Mrs Hugh	widow	33	b f	f	3
484		Holliday, George	merchant	29	2	f	18
246		Littlejohns, Mary A	widow	35	b f	f	
931		Loudon, James		35	b f	f	29
383		McConochie, Samuel		29	b f	f	
725		McMillan, T H	banker	28	3	f	30
1091		Mainland, Isabella	spinster	31	3	f	7
1092		Mainland, Jemima	spinster	31	3	f	7
1093		Mainland, Jessie	spinster	31	3	f	7
1673		Moody, Robert		31	b f	f	

R. O.
m f 7
m f 8
m f 7
m f 7
m f 7
m f 7
m f 3
m f 4

POLLING SUB-DIVISION No. 5.

NO. ON ROLL.	JUROR.	NAME.	OCCAPATION	LOT	CON		P. O.
1459		Reesor, Noah	farmer	34	3	f	26
1560		Sullivan, Robert		27	1	f	29
1649		Thom, Mrs Ellen	widow	30	b f	f	2
1740		Vanhorne, Mrs E	widow	35	1	f	3
1061		Westney, Mr		32	b f	f	20
1761		Walton, Mrs Mercy	widow	27	b f	f	2

Voters' List for 1898.

—: Municipality of the —:

* Township of Pickering *

Polling Sub Division No. 5.

Comprising all the Lots from No. 27 to No. 35 inclusive, from the Lake to the Fourth Concession Line.

PART III.—Persons entitled to vote at Elections to the Legislative Assembly only.

NO. ON ROLL	JUROR.	NAME.	OCCAPATION	LOT	CON		♂ ♀
27		Allison, William A	laborer	28	2	m f	2
75		Brown, Thomas	laborer	32	b f	m f	4
155		Burrows, James	V S	35	3	m f	7
156		Burkholder, Harvey	laborer	28	3	m f	7
162		Burkholder, William	laborer	31	3	m f	7
250		Craven, Edmund	laborer	30	b f	m f	2
251		Collins, Richard	R R	35	b f	m f	4
254		Chapple, Henry	laborer	30	1	m f	2
404		Degeer, Charles	carpenter	31	2	m f	7
485		Found, William	laborer	29	b f	m f	2
495		Featherstone, John	laborer	34	b f	m f	4
552		Gibson, Robert	laborer	35	b f	m f	4
677		Henderson, Thomas	laborer	32	b f	m f	3
681		Hines, Frederick	laborer	35	b f	m f	2
730		Hare, Albert	laborer	32	2	m f	7
833		Judd, William	laborer	29	2	m f	7
930		Luke, Wallace	toll k'r	34	b f	m f	3
963		Lintner, Charles	laborer	30	3	m f	7
1046		McKay, Archie	laborer	34	b f	m f	4

P. O.

26

29

2

3

20

2

POLLING SUB-DIVISION No. 5.

NO. ON ROLL.	JUROR.	NAME.	OCCUPATION.	AGE.	CON.		P. O.
1052		McGinty, Frank	laborer	33	b f	m f	2
1058		Madill, Preston	laborer	32	1	m f	3
1064		Monney, William	laborer	27	2	m f	7
1222		Norris, W J	laborer	32	2	m f	7
1270		Osland, George	laborer	81	3	m f	7
1808		Pratt, James	engineer	35	b f	m f	4
1814		Pearce, John	laborer	30	b f	m f	2
1825		Palmer, F J	laborer	30	2	m f	7
1449		Rees, Edward	laborer	32	1	m f	3
1588		Sullivan, John	st agent	35	b f	m f	4

Voters' List for 1898.

—: Municipality of the —:

* Township of Pickering *

Polling Sub-Division No. 6.

Comprising all the lots from No. 1 to No. 10 inclusive, from the Fourth Concession Line to the Seventh Concession Line.

PART I.—List of persons entitled to vote at both Municipal Elections and Elections to the Legislative Assembly.

NO. ON ROLL.	JUROR	NAME.	OCCUPATION	LOT	CON		P. O.
37	j	Adamson, John	farmer	9	6	t	m f 10
38	j	Adamson, John F	farmer	9	6	t	m f 10
44	j	Adamson, Henry	farmer	7	5	t	m f 10
46		Agars, George	laborer	5	6	f	m f 9
160	j	Bell, William J	farmer	2	4	t	m f 5
170	j	Brown, John	farmer	8	5	f	m f 10
178	j	Bayles, Thomas N	farmer	8	5	f	m t 10
335	i	Corner, John	farmer	2	6	t	m f 9
349		Clark, William	farmer	8	6	f	m f 10
350	j	Clark, William jr	farmer	8	6	f	m f 10
351	j	Cammack, Robert	farmer	3	4	t	m f 5
424		Dennis, William	farmer	4	6	t	m f 9
458	j	Edwards, John	farmer	2	4	f	m f 5
463	j	Emerson, John	gentleman	10	6	f	m f 10
610	j	Gee, William	farmer	7	5	f	m f 10
611	j	Gee, Westey	farmer	7	5	f	m f 10
618		Gibson, Judson	farmer	7	6	f	m f 9
619	j	Gibson, Frederick	farmer	7	6	f	m f 9
748	j	Harbron, Joseph	laborer	7	6	t	m f 9

P. O.

m f 2
m f 3

m f 7
m f 7

m f 7
m f 4

m f 2
m f 7

m f 3
m f 4

POLLING SUB-DIVISION No. 6.

NO. ON ROLL.	JUROR.	NAME.	OCCUPATION	LOT	CON			P. O.
773		Hortop, James	gentleman	5	6	f		m f 9
774	j	Hortop, Joseph N	farmer	6	6	f		m f 9
829	j	Ireland, William	farmer	9	4	t		n f 10
865	j	Jones, Alonza	farmer	9	6	t		m f 16
971		Lynde, Charles	thresher	2	4	f		m f 5
975	j	Lawrence, George E	farmer	8	4	f		m f 5
985	j	Lawton, John	farmer	1	5	f		m f 9
986	j	Lawton, Frank	farmer	1	5	f		m f 9
987		Lawrence, John	carpenter	3	5	f		m f 9
989	j	Lidgett, James	farmer	10	5	t		m f 10
994	j	Lawrence, Absalom	farmer	3	5	t		m f 9
996		Lawton, Frederick	millar	10	6	t		m f 10
1004	j	Lewis, John	farmer	7	6	t		m f 9
1005	j	Lewis, Thomas	farmer	7	6	t		m f 9
1006	j	Lewis, Francis	farmer	7	6	t		m f 9
1010		Lawrence, Edward	carpenter	2	6	t		m f 9
1096	j	McCarthy, Frank G	farmer	7	4	f		m f 5
1111	j	McMillan, John	farmer	10	4	t		m f 5
1126	j	Mackey, Charles	farmer	2	6	t		m f 9
1127		Mackey, Sylvester	gentleman	2	6	f		m f 9
1128	j	Mackie, John	farmer	2	6	f		m f 9
1142		Moore, Alexander	farmer	10	6	t		m f 10
1143		Moore, Thomas	farmer	10	6	t		m f 10
1144	j	Moore, Alexander jr	farmer	10	6	f s		m f 10
1145	j	Moore, John	farmer	10	6	f s		m f 10
1153	j	Mowbray, R R	farmer	3	6	f		m f 9
352		Madill, Wm B	gentleman	3	4	f		m f 5
1267		Orvis, Selah	farmer	3	4	f		m f 5
1276		O'Leary, Timothy	farmer	4	4	f		m f 5
1277		Orvis, Nathan	laborer	3	4	f		m f 5
1278		Orvis, Myron	laborer	3	4	f		m f 5
1281	j	Orvis, William P	farmer	9	4	t		m f 6
1338		Puckrin, Isaac	farmer	5	4	f		m f 5

POLLING SUB-DIVISION No. 6.

P. O.		NO. ON ROLL.	JUROR.	NAME	OCCUPATION	LOT	CON		5
m f	9	1339	j	Puckin, John	farmer	5	4	f	m f 5
m f	9	1240	j	Puckin, Simon	farmer	5	4	f	m f 5
u f	10	1341	j	Puckrin, William	farmer	5	4	f	m f 5
m f	16	1356	j	Pr'key, Charles H	farmer	3	5	f	m f 9
m f	5	1357	j	Pengelly, James	farmer	10	4	t	u f 10
m f	5	1359	j	Plaskett, James	farmer	7	4	t	m f 5
m f	9	1366	j	Parkins, Aaron	farmer	4	5	f	m f 9
m f	9	1375	j	Parkins, William	farmer	4	6	f	m f 9
m f	9	1376	j	Parrott, Robert	farmer	5	5	t	m f 9
m f	10	1377	j	Parrott, Alexander	farmer	5	5	t	m f 9
m f	9	1391	j	Pallister, John	farmer	6	6	t	m f 9
m f	10	1462	j	Rainey, William	laborer	2	4	f	m f 5
m f	9	1478	j	Redman, Edwin	farmer	1	6	t	m f 9
m f	9	1482	j	Redman, Seth	farmer	4	6	f	m f 9
m f	9	1483	j	Rodd, John	merchant	3	5	f	m f 9
m f	9	1484	j	Rogers, Clarkson	farmer	6	6	f	m f 9
m f	5	1485	j	Rogers, Alfred	farmer	6	6	f	m f 9
m f	5	1467	j	Richardson, Thomas	laborer	4	6	f	m f 9
m f	9	1575	j	Smith, Frank T	farmer	8	4	f	m f 5
m f	9	1576	j	Squire, William	farmer	6	4	f	m f 5
m f	9	1578	j	Seldon, John	farmer	9	5	f	m f 10
m f	10	1580	j	Scott, James	farmer	1	4	t	m f 5
m f	10	1581	j	Scott, James jr	farmer	1	4	t	m f 5
m f	10	1593	j	Sanderson, Thomas	farmer	8	5	t	m f 10
m f	10	1595	j	Sadler, Wilfred	V S	5	5	f	m f 9
m f	9	1599	j	Salton, George	farmer	3	6	f	m f 9
m f	5	1600	j	Salton, John W	farmer	2	5	f	m f 9
m f	5	1602	j	Sadler, William	farmer	5	6	f	m f 9
m f	5	1704	j	Thompson, Frank	farmer	5	5	t	m f 9
m f	5	1706	j	Tripp, Joseph	farmer	3	6	t	m f 9
m f	5	997	j	Tate, William	gentleman	10	6	f	m f 10
m f	6	1804	j	Wilson, Newrick	farmer	8	5	t	m f 10
m f	5	1805	j	Wilson, Richard	farmer	8	5	f	m f 10

NO. ON ROLL.	JUROR.	NAME.	OCCUPATION	LOT	CON		O. P.
1808	j	Wilson, Thomas	farmer	9	5	f	m f 10
1811		Wilson, William	carpenter	10	6	f	m f 10
1818	j	Wilson, John	farmer	6	5	t	m f 9
1822	j	Wagner, Benjamin	manufact'r	3	6	f	m f 9
1823	j	Weatherill, Bailey	farmer	6	5	f	m f 9
1834		Wilson, William	har maker	3	6	t	m f 9
1824	j	Wilson, George	farmer	10	6	f	m f 10

Voters' List for 1898.

—: Municipality of the —:

* Township of Pickering *

Polling Sub Division No. 6.

Comprising all the lots from No. 1 to No. 10 inclusive, from the Fourth Concession Line to the Seventh Concession Line.

PART II.—Persons entitled to vote at Municipal Elections only.

NO. ON ROLL.	JUROR	NAME.	OCCAPATION	LOT	CON		P. O.
45		Adumson, Mrs E	widow	7	5	f	10
168		Brignall, Jane	widow	3	5	f	9
171		Brown, Mary	widow	7	5	f	9
1146		Cowan, Robert	farmer	10	6	f	20
1113		Dunlop, Mrs S	widow	10	4	f	17
513		Farewell, J E	solicitor	8	4	f	17
425		Gold, Matthew	clergyman	4	6	f	17
1358		Gibson, Mrs George	widow	10	4	f	
775		Harrison, Mrs A	widow	7	6	f	9
1282		Haney, Henry		9	4	f	29
1393		Hyfield, Mrs John	widow	6	6	f	15
1372		Jones, Mrs George	widow	1	6	f	17
40		Larkin, Patrick	gentleman	9	6	f	29
1116		Mackey, Sylvester		3	4	f	17
418		McKittrick, Mrs	widow	9	5	f	17
1007		Mowbray, Mrs E	widow	7	6	f	
1095		McQuay, Mrs Thomas	widow	6	4	f	5
1360		McCann, Philip		7	4	f	
1361		McCann, Thomas		7	4	f	17

P. O.
m f 10
m f 10
m f 9
m f 9
m f 9
m f 9
m f 10

NO. ON ROLL.	JUROR	NAME.	OCCUPATION	LOT	CON		P. O.
1582		Morecombe, Wm		1	4	f	17
1819		Montgomery, Joseph R		6	5	f	17
148		McGillivray, Theo A	barrister	1	4	f	17
142		MacLaren, John A		1	4	f	
1011		Robb, John	farmer	2	6	f	18
1471		Rogers, Royal	farmer	8	4	f	9
1475		Reid, Sarah	widow	3	5	f	9
1479		Redman, William		1	6	f	31
1480		Raham, J C		9	4	f	33
749		Snell, Mrs Samuel	widow	7	6	f	1
830		Smith, G Y	solicitor	9	4	f	17
1112		Smith, John		10	4	f	17
1601		Sadler, Mrs Jos P	widow	3	6	f	9

Voters' List for 1898.

—: Municipality of the —:

* Township of Pickering *

Polling Sub Division No. 6.

Comprising all the lots from No. 1 to No. 10 inclusive, from the Fourth Concession Line to the Seventh Concession Line.

PART III.—Persons entitled to vote at Elections to the Legislative Assembly only.

NO. ON ROLL.	JUROR	NAME.	OCCAPATION	LOT	CON		60
89		Adamson, Simon	laborer	9	6	m f	10
49		Astridge, Henry	laborer	3	6	m f	9
165		Bee, John H	laborer	6	5	m f	9
831		Childerose, Andrew	laborer	7	4	m f	5
845		Corbett, Alexander	laborer	10	6	m f	10
867		Crayford, William	laborer	9	6	m f	10
748		Harlow, Charles	laborer	3	4	m f	5
881		Ireland, Robert	laborer	3	4	m f	5
886		Jacks, Thomas	laborer	5	4	m f	5
991		Lidgett, Nelson	laborer	10	5	m f	10
1107		Marritt, Frank	laborer	4	4	m f	5
1390		Parrott, Andrew	laborer	5	5	m f	9
1466		Richardson, George	laborer	3	6	m f	9
1596		Salton, James	laborer	2	6	m f	9

P. O.
17
17
17
18
9
9
31
33
1
17
17
9

f
f
f
f
f
f
f
f
f
f
f

Voters' List for 1898.

—: Municipality of the —:

* Township of Pickering *

Polling Sub-Division No. 7.

Comprising all the Lots from No. 11 to No. 18 inclusive, from the Fourth Fourth Concession Line to the Seventh Concession Line.

PART I.—List of persons entitled to vote at both Municipal Elections and Elections to the Legislative Assembly

NO. ON ROLL.	JUROR.	NAME.	OCCUPATION	LOT	CON		
41	j	Aickin, John	farmer	18	4	t	m f 6
42	j	Aickin, James	farmer	18	4	t	m f 6
172		Brown, Robert	carpenter	11	6	f	m f 10
173	j	Badgerow, Oliver	farmer	13	4	t	m f 10
175	j	Bray, Walter	farmer	11	4	t	n. f 5
183	j	Badgerow, William	farmer	13	4	t	m f 10
188	j	Byers, James	farmer	13	6	f	m f 10
200	j	Burton, John	farmer	16	6	f	m f 11
211	j	Burkholder, Aaron	farmer	13	6	t	m f 10
2100		Bodell, W J	shoemaker	18	5	f	m f 11
2102		Brown, T C	wright	18	5	f	m f 11
2103	j	Beer, Thomas	laborer	18	6	t	m f 11
2106	j	Burk, Joseph	gardener	18	5	f	m f 11
2109		Beattie, James	laborer	18	6	t	m f 11
2129		Bateson, U E	physician	18	5	t	m f 11
291		Carlton, Samuel	laborer	11	4	t	m f 10
304		Crawford, Norman	laborer	14	4	t	m f 11
334	j	Connor, Isaac	farmer	15	5	f	m f 11
339		Carey, Michael	laborer	11	5	f	m f 10

ering ✕

e, from the Fourth
sion Line.

Elections and Elec.

t m f 6
t m f 6
f m f 10
t m f 10
t n. f 5
t m f 10
f m f 10
f m f 11
t m f 10
f m f 11
f m f 11
t m f 11
t m f 10
t m f 11
f m f 11
f m f 10

POLLING SUB-DIVISION No. 7.

NO. ON ROLL.	JUROR.	NAME	OCCUPATION	LOT	CON	P. O.
343		Crummer, William	millor	12	5	t m f 10
353	j	Catherwood, Thomas	farmer	14	6	f m f 10
356		Clare, G R	clergyman	11	6	t m f 10
360		Clyne, James	agent	15	6	t m f 11
2108		Cowie, William	agent	18	5	f m t 11
2118		Cassie, John	laborer	18	5	t m f 11
2124	j	Cowie, John	laborer	18	5	f m f 11
2127		Coltman, William	teacher	18	5	t m f 11
2114		Coakwell, Wilham	harnessmk	18	5	t m f 11
427		Dunlop, Hamilton	laborer	11	6	f m f 10
429	j	Devitt, William J	farmer	15	6	f m f 10
439		Devitt, John	farmer	14	5	f m f 10
440	j	Devitt, Robert	farmer	14	5	f m f 10
441	j	Devitt, John jr	farmer	14	5	f m f 10
460	j	Ellicott, Harry	farmer	16	4	f m f 6
461	j	Ellicott, William	farmer	16	4	f m f 6
508	j	Fuller, Henry C	farmer	15	4	t m f 6
509		Fuller, Charles	farmer	15	4	f m f 6
604		Gibson, James	laborer	11	6	t m f 10
612	j	Gleeson, Edward	hotelkeeper	12	5	t m f 10
614		Gleeson, Michael	postmaster	11	5	f m f 10
622	j	Gammage, Thomas	farmer	18	5	t m f 11
627		Green, F L	millor	12	6	f m f 10
628		Green, Walter S	millor	12	6	f m f 10
632		Graham, John	laborer	14	6	t m f 15
2119		Gerow, John F	clerk	18	5	f m f 11
732	j	Hubbard, Asa	farmer	18	4	f m f 11
735		Hamilton, Alfred	laborer	18	5	t m f 11
738	j	Hamilton, John	farmer	16	5	t m f 10
739	j	Hamilton, William	farmer	16	5	t m f 10
740	j	Hamilton, Milford	farmer	16	5	t m f 10
742	j	Humphrey, Francis	farmer	16	4	f m f 6
759	j	Heisey, Albert	farmer	18	5	t m f 11

POLLING SUB-DIVISION No 7.

NO. ON ROLL.	JUROR	NAME.	OCCUPATION	LOT	CON	P. O.	
1405		Hick, James	farmer	12	4	f	m f 10
839	j	Jackson, Edgerton	farmer	11	5	f	m f 10
840	j	Johnston, Graham	farmer	11	5	t	m f 10
842	j	Johnston, Lancelot	farmer	16	6	f	m f 11
847		Jackson, W H	postmaster	18	4	f	m f 6
848		Jackson, James	gentleman	18	4	f	m f 6
918	j	Keeler, Lorenzo	farmer	12	4	t	m f 10
992	j	Lynde, John	farmer	12	5	t	m f 10
1000	j	Liscombe, W H	farmer	14	6	f	m f 10
1001	j	Law, George	smith	11	6	t	m f 10
2141		Littlejohn, Joram	laborer	18	5	t	m f 11
2142	j	Littlejohn, John	laborer	18	5	t	m f 11
1097	j	McBrady, Robert	farmer	12	4	f	m f 10
1099		McCormack, James	farmer	17	4	f	m f 11
1100	j	McCormack, Joseph	farmer	17	4	f	m f 11
1101	j	McCormack, William	farmer	16	5	t	m f 11
1114	j	Medd, Richard	farmer	18	4	t	m f 11
1118		Meen, Benjamin	farmer	11	5	f	m f 10
1119	j	Meen, Arthur	farmer	11	5	f	m f 10
1121		Matthews, Peter	laborer	18	5	t	m f 11
1129		Mackey, Levi	bailiff	12	5	t	m f 10
1134	j	McGuire, Michael	farmer	15	5	t	m f 10
1135		McGuire, Charles	farmer	15	5	t	m f 10
1137		McGuire, John	laborer	12	5	t	m f 10
1181	j	Miller, Robert	farmer	15	6	f	m f 11
1347		Pengelly, William	tanner	13	5	f	m f 10
1348	j	Pengelly, William jr	farmer	13	6	t	m f 10
1379		Philip, George	farmer	17	6	f	m f 11
1880	j	Philip, Thomas	farmer	17	5	f	m f 11
1881	j	Philip, John	farmer	17	6	f	m f 11
1404	j	Parrinder, William	farmer	12	5	t	m f 10
2150	j	Poucher, Thomas	auctioneer	18	5	f	m f 11
2115		Price, R J	laborer	18	5	f	m f 11

POLLING SUB-DIVISION No. 7.

58

P. O.
 m f 10
 m f 10
 m f 10
 m f 11
 m f 6
 m f 6
 m f 10
 m f 10
 m f 10
 m f 10
 m f 11
 m f 11
 m f 10
 m f 11
 m f 11
 m f 11
 m f 10
 m f 10
 m f 10
 m f 10
 m f 11
 m f 10
 m f 11
 m f 11
 m f 10
 m f 11
 m f 11

NO. ON ROLL.	JUROR.	NAME	OCCUPATION	LOT	CON	P. O.
1472		Kobson, John P	farmer	18	4	f m f 6
1476		Ryan, Thomas	laborer	11	5	t m f 10
1577	j	Somerville, Robert	farmer	11	5	f m f 10
1585		Shea, John	laborer	13	5	f m f 10
1612	j	Stevenson, S H	farmer	18	6	f m f 11
1618	j	Stevenson, John	farmer	18	6	f m f 11
1614	j	Stevenson, Harold	farmer	18	6	f m f 11
1622	j	Stewart, Samuel	farmer	13	6	t m f 10
1697		Teefy, John	shoemaker	11	5	f m f 10
1710		Tremble, Alfred	laborer	11	5	t m f 10
1714	j	Taylor, Spencer	farmer	14	6	t m f 10
1803	j	Wilson, Richard jr	farmer	11	6	t m f 10
1809	j	White, Lorenzo	farmer	13	6	f m f 10
1810	j	White, Melville	farmer	13	6	f m f 10
1820		Ward, George	teacher	11	6	t m f 10
2159	j	Young, George	carpenter	18	5	t m f 11
2165		Young, Joseph A	carpenter	18	5	f m f 11

Voters' List for 1898.

—: Municipality of the :—

* Township of Pickering *

Polling Sub-Division No. 7.

Comprising all the Lots from No. 11 to No. 18 inclusive, from the Fourth Fourth Concession Line to the Seventh Concession Line.

PART II.—Persons entitled to vote at Municipal Elections only.

NO. ON ROLL.	JUROR.	NAME.	OCCUPATION	LOT	CON		6 2
174		Bailey, William	farmer	18	4	f	17
208		Brignall, Ann	widow	11	5	f	10
2104		Barnes, Ann	spinster	18	6	f	12
2110		Beattie, Annie	spinster	18	6	f	
736		Britton, George	laborer	18	5	f	
1122		Beaton, J S	merchant	18	5	f	30
1117		Cartwright, Mr	solicitor	15	4	f	29
176		Elliott, Mrs A	widow	11	4	f	5
509		Fuller, John	farmer	14	4	f	27
516		Fisher, Mrs	widow	11	6	f	10
629		Green, Mrs S	widow	11	6	f	29
1715		Geddes, James		14	6	f	
1136		Howell, Mrs H	widow	15	5	f	17
605		Liscombe, Isabella	spinster	11	6	f	10
1139		McKay, Ann	widow	11	6	f	10
1117		McDonald, Mr	solicitor	15	4	f	29
1120		McKay, Mrs	widow	11	5	f	
2149		Palmer, Mrs G S	widow	18	5	f	11
1477		Ryan, Edward		11	5	f	29

POLLING SUB-DIVISION No. 7.

55

NO. ON ROLL.	JUROR	NAME.	OCCUPATION	LOT	CON		5
292		Somerville, John		11	4	f	29
1586		Shea, Ann	widow	13	5	f	10
1588		Stark, Hannah	widow	18	5	f	11
1598		Shea, Joseph	cooper	18	5	f	29
914		Todd, William	wright	12	4	f	23
48		Woodruff, Mrs	widow	18	4	f	1
212		Wood, Minnie	spinster	13	6	f	10
2160		Young, Mrs U	widow	18	5	f	10

ing *

m the Fourth Line.

	5
f	17
f	10
f	12
f	
f	30
f	29
f	5
f	27
f	10
f	29
f	
f	17
f	10
f	10
f	29
f	
f	11
f	29

Voters' List for 1898.

—: Municipality of the :—

* Township of Pickering *

Polling Sub Division No. 7.

Comprising all the lots from No. 11 to No. 18 inclusive, from the Fourth Concession Line to the Seventh Concession Line.

PART III.—Persons entitled to vote at Elections to the Legislative Assembly only.

NO. ON ROLL	JUROR	NAME.	OCCAPATION	LOT	CON		P. O
2099		Allbright, Louis	laborer	13	6	m f	11
163		Badgerow, Jacob	laborer	13	4	m f	10
207		Brignall, W U	laborer	11	5	m f	10
2105		Beattie, Robert	laborer	18	6	m f	11
2111		Beattie, James jr	laborer	18	6	m f	11
428		Dun'op, George	laborer	11	6	m f	10
442		Dunlop, Alexander	laborer	11	5	m f	10
459		Elliott, William	laborer	13	5	m f	10
506		Farley, George	laborer	16	5	m f	11
635		Gammage, John	laborer	18	5	m f	11
828		Irvice, John	tailor	12	4	m t	10
1288		Newton, George	smith	18	4	m f	6
1367		Perry, Peter	laborer	11	5	m f	10
1382		Philip, George jr	laborer	17	6	m f	11
1587		Shea, Henry	laborer	11	6	m f	10
1603		Sadler, Thomas	laborer	12	5	m f	10
1728		Todd, John	laborer	18	4	m f	11

NO. ON ROLL.	JUROR	NAME.	OCCUPATION	LOT	CON	P. O.	
620	j	Greig, Robert	farmer	24	6	f	m f 11
621	j	Greig, John	farmer	24	6	f	m f 11
2131	j	Gerow, John M	hotelkeeper	19	6	f	m f 11
734	j	Hastings, George	farmer	24	5	f	m f 11
746	j	Hogle, James	farmer	20	5	f	m f 11
750	j	Hastings, Alvin	farmer	20	5	t	m f 11
751		Hastings, John	farmer	20	5	f	m f 11
752	j	Harvey, Wesley	farmer	20	6	t	m f 11
754		Ham, John	farmer	21	6	t	m f 11
755	j	Ham, Francis	farmer	21	6	t	m f 11
757		Holtby, Edward	farmer	23	5	f	m f 11
758	j	Holtby, John H	farmer	23	5	f	m f 11
765	j	Hubbard, Jess	farmer	22	5	t	m f 11
767	j	Hogle, Parson	farmer	19	4	t	m f 11
782	j	Hood, John	laborer	19	6	f	m f 11
780	j	Houtby, William E	farmer	23	6	t	m f 11
2133		Hubbard, James	laborer	19	5	f	m f 11
843		Jackson, Robert	farmer	21	6	f	m f 11
849	j	Johnson, Harrison	farmer	27	6	f	m f 8
1398		Johnson, John	gentleman	27	6	f	m f 12
905	j	Kayes, James H	farmer	24	4	t	m f 6
2134		Laidlow, James	laborer	19	6	t	m f 11
2136		Liscombe, Harvey	laborer	19	6	t	m f 11
998	j	Linton, George D	farmer	21	5	f	m f 11
949		Lotton, David	laborer	23	5	t	m f 11
1124		Major, William	farmer	26	5	f	m f 8
1125	j	Major, William H	farmer	26	5	f	m f 8
2144	j	Matthews, William	laborer	19	5	f	m f 11
2145	j	Mechin, Hugh	merchant	19	6	f	m f 11
2147		Mairs, John	thresher	19	6	f	m f 11
2148	j	Mosgrove, William	smith	19	6	f	m f 11
2154		McIntyre, Dugald	laborer	19	5	f	m f 11
1231	j	Norton, William H	farmer	26	6	f	m f 11

POLLING SUB DIVISION No. 8.

59

P. O.		NO. ON ROLL	JUROR	NAME.	OCCAPATION	LOT	CON	P. O.
m f 11		1846	j	Pugh, George E	farmer	27	4	f m f 8
m f 11		1852	j	Pugh, Oliver H	farmer	22	4	f m f 8
m f 11		1853	j	Pugh, Hugh	farmer	26	4	f m f 8
m f 11		1855	j	Pugh, Judson	farmer	27	4	f m f 8
m f 11		1862		Phillips, John	farmer	22	5	f m f 11
m f 11		1863	j	Phillips, John jr	farmer	22	5	f m f 11
m f 11		1864	j	Phillips, G W	farmer	22	5	f m f 11
m f 11		1868	j	Phillips, R S	farmer	19	5	f m f 11
m f 11		1886	j	Phillip, Colin	farmer	19	6	f m f 11
m f 11		1887	i	Patterson, John	farmer	24	6	f m f 11
m f 11		1894	j	Percy, Uriah	farmer	27	6	t m f 12
m f 11		1895	j	Percy, Albert	farmer	27	6	fs m f 12
m f 11		1896	j	Percy, Willis J	farmer	27	6	fs m f 12
m f 11		1615		Shank, Abram	butcher	24	6	t m f 11
m f 11		1621	j	Spears, James V	farmer	28	6	f m f 13
m f 11		1604	j	Stevenson, N L	farmer	19	5	f m f 11
m f 11		1605	j	Stevenson, Walter T	farmer	19	5	f m f 11
m f 11		1606	j	Stevenson, Robt F	farmer	19	5	f m f 11
m f 8		1607	j	Storry, Francis	farmer	22	6	t m f 11
m f 12		2152		Stephenson, David	laborer	19	6	t m f 11
m f 6		2162	j	Sanderson, Frank	carpenter	19	6	t m f 11
m f 11		1699		Sleigh, John	farmer	27	5	t m f 8
m f 11		1683	j	Tool, George	farmer	23	4	f m f 6
m f 11		1694	j	Tool, John W	farmer	24	4	f m f 8
m f 11		1696		Tool, John	farmer	25	5	f m f 9
m f 8		1698	j	Th mson, Adolphus	farmer	27	5	t m f 8
m f 8		1700	j	Thornton, Thomas	farmer	23	5	f m f 11
m f 11		1708		Tomhnson, Frank	laborer	26	6	t m f 12
m f 11		1773	j	Wright, Robert	farmer	23	6	t m f 11
m f 11		1782	j	Willson, Edward	farmer	21	4	f m f 11
m f 11		1784		White, James	farmer	28	4	f m f 8
m f 11		1791		White, William	farmer	28	5	f m f 8
m f 11		1793	j	Witter, R W	farmer	22	4	t m f 6

POLLING SUB-DIVISION No. 8.

NO. ON ROLL.	JUROR.	NAME	OCCUPATION	LOT	CON	P. O.	
1815	j	Wagg, George	farmer	27	5	t	u f 12
1816	j	Wagg, Nelson	farmer	27	5	t	u f 12
1825	j	White, John A	farmer	25	5	f	m f 11
2157	j	Williams, James	laborer	19	6	f	m f 11
2158		Willis, T B	postmaster	19	6	f	m f 11
2164	j	Wagner, J H	butcher	19	5	f	m f 11
2166	j	Wilson, William	farmer	19	5	f	m f 11
2167		Wilbur, Israel	laborer	19	5	t	m f 11
2168		Wilbur, Cline	laborer	19	5	t	m f 11

Voters' List for 1898.

—: Municipality of the —:

* Township of Pickering *

Polling Sub Division No. 8.

Comprising all the lots from No. 19 to No. 28 inclusive, from the Fourth Concession Line to the Seventh Concession Line.

PART II.—Persons entitled to vote at Municipal Elections only.

NO. ON ROLL.	JUROR	NAME.	OCCUPATION	LOT	CON		P. O.
2126		Dunham, Mrs N	widow	19	6	f	11
2132		Hubbard, Mrs W	widow	19	6	f	11
2169		Keast, Mrs John	widow	19	5	f	10
2187		Liscombe, Jane	widow	19	6	f	11
766		Matthews, C W		22	5	f	
907		McLaren, James		26	4	f	
1608		McNeal, James		22	6	f	
2163		McIntyre, Mary	widow	19	6	f	11
2151		McCann, Sarah	spinster	19	5	f	11
1345		Pugh, Mrs Josiah	widow	27	4	f	8
1354		Pugh, Mrs Thomas	widow	26	4	f	8
2117		Reynolds, W M		19	5	f	
2113		Rutledge, James	solicitor	19	5	f	17
768		Robson, W B		19	4	f	
784		Sharrard, Aaron	gentleman	25	6	f	17

Voters' List for 1898.

—: Municipality of the :—

* Township of Pickering *

Polling Sub Division No. 8.

Comprising all the lots from No. 19 to No. 28 inclusive, from the Fourth Concession Line to the Seventh Concession Line.

PART III.—Persons entitled to vote at Elections to the Legislative Assembly only.

NO. ON ROLL.	JUROR	NAME.	OCCUPATION	LOT	CON		6
2118		Brodie, Russell	laborer	19	5	m f	11
825		Carter, William	laborer	22	5	m f	8
2140		Dafoe, John	laborer	19	5	m f	11
634		Gourlie, William	teacher	22	6	m f	11
796		Hanson, Henry	laborer	26	5	m f	10
908		Kayes, Geo E	laborer	24	4	m f	6
977		Lotton, James	laborer	24	5	m f	11
984		Lotton, John	laborer	25	5	m f	11
1123		Mathews, Albert	laborer	23	5	m f	11
1226		Neal, William	laborer	19	6	m f	11
1230		Neal, Lawrence	laborer	19	6	m f	11
1374		Pugh, Thomas L	laborer	27	4	m f	8
1474		Randall, Richard	laborer	19	5	m f	11
1579		Simpson, John	laborer	21	4	m f	11
1584		Sykes, Samuel	laborer	27	4	m f	8
1609		Sanderson, William	laborer	19	5	m f	11
1838		Wingfield, John	laborer	20	6	m f	11

Voters' List for 1898.

—: Municipality of the —:

* Township of Pickering *

Polling Sub-Division No. 9.

Comprising all the Lots from No. 29 to No. 85 inclusive, from the Fourth Concession Line to the Seventh Concession Line.

*PART I.—List of persons entitled to vote at both Municipal Elections and Elections to the Legislative Assembly.

	P. O.	NO. ON ROLL.	JUROR	NAME.	OCCUPATION	LOT	CON		Q. A.
m f	11	34	j	Annis, David	farmer	31	5	f	m f 8
m f	8	2028	j	Armstrong, Alexander	harnessmk	31	5	f	m f 8
m f	11	153	j	Beare, John S	farmer	35	4	f	m f 8
m f	11	164	j	Besse, John H	hotelkeeper	31	4	f	m f 8
m f	10	179	j	Bell, John J	farmer	35	5	f	m f 12
m f	6	180		Barton, Isaac	laborer	29	5	f	m f 12
m f	11	182		Bice, John	farmer	35	5	f	m f 12
m f	11	190	j	Bice, Elias	farmer	34	6	t	m f 12
m f	11	191		Bice, Nelson	gentleman	33	6	f	m f 12
m f	11	192		Booth, William	laborer	29	6	t	m f 12
m f	11	194	j	Barton, William R	smith	35	6	f	m f 12
m f	8	196	j	Ballard, David	farmer	32	6	t	m f 12
m f	11	198	j	Barton, Richard	butcher	35	6	t	m f 12
m f	11	202	j	Barnes, William G	manu fact'r	33	6	f	m f 12
m f	8	204		Burgess, Francis	farmer	35	5	f	m f 12
m f	11	2029		Burton, Israel	carpenter	31	5	f	m f 8
m f	11	2031	j	Beare, Thomas	merchant	31	5	f	m f 9
		2033		Beaton, D R	tp. clerk	31	5	t	m f 8
		2035		Burton, Thomas	laborer	30	5	f	m f 8

POLLING SUB-DIVISION No. 9.

NO. ON ROLL.	JUROR.	NAME	OCCUPATION	LOT	CON		P. O.
2036		Burkholder, John	laborer	31	5	f	m f 8
2037		Burkholder, George	laborer	31	5	f	m f 8
387	j	Coakwell, George	farmer	35	6	t	m f 12
2039	j	Carter, George	farmer	32	4	t	m f 8
2040		Carter, Thomas	gentleman	32	4	f	m f 8
2049		Chapman, John	laborer	33	4	t	m f 8
413		Doten, Joseph	manufact'r	34	5	t	m f 12
415	j	Dafoe, Robert	thresher	33	5	t	m f 12
230	j	Doten, Sanford	laborer	33	6	t	m f 12
2041		Degeer, Simon	laborer	32	5	t	m f 8
474	j	Ellis, Thomas	merchant	34	6	t	m f 12
2043	j	Ellison, B A	smith	32	4	f	m f 8
514		Ferrier, O P.	farmer	34	5	f	m f 12
515	j	Ferrier, George	farmer	34	5	f	m f 12
517	j	Fuller, W A	merchant	34	6	f	m f 12
518		Forster, Clarence	machinist	33	6	t	m f 12
524		Fowler, James	turner	33	6	t	m f 12
2051		Fouton, Daniel	laborer	32	4	t	m f 12
2053	j	Gerow, W G	smith	31	5	f	m f 8
733		Hamilton, James	butcher	31	4	f	m f 8
737	j	Hodgson, Charles	farmer	29	4	f	m f 8
761	j	Hagerman, Theophilus	farmer	34	5	f	m f 8
762	j	Hagerman, W B	farmer	32	5	t	m f 8
763	j	Hagerman, W A	farmer	35	5	t	m f 8
776		Hoover, Peter R	millor	34	6	f	m f 12
777		Hooyer, Alpheus	millor	34	6	f	m f 12
778		Hoover, William	millor	34	6	f	m f 12
779	j	Hopkins, Henry	V S	33	6	f	m f 12
2055		Hilt, Stephen	laborer	31	4	t	m f 8
2066		Hutchison, J C	phys'cian	32	4	t	m f 8
915		King, John	laborer	31	5	f	m f 12
920	j	Kirton, John	farmer	31	4	t	m f 7
982		Long, Henry	laborer	32	4	f	m f 8

POLLING SUB DIVISION No. 9.

65

NO ON ROLL	JUROR	NAME.	OCCAPATION	LOT	CON		o
988		Long, William	laborer	32	4	t	m f 8
988	j	Larkin, John	farmer	33	4	f	m f 8
2057		Liddell, James	laborer	32	4	f	m f 8
2058	j	Lount, W E	manufact'r	31	4	t	m f 8
2060	j	Lynde, S B	clerk	31	5	t	m f 8
2069		Long, James	laborer	31	5	f	m f 8
1108	j	Major, A E	farmer	29	4	f	m f 8
1109	j	Major, W S	farmer	30	4	f	m f 8
1110	j	Major, H H	V S	29	4	f	m f 8
1131	j	Moore, John jr	farmer	30	5	t	m f 8
1132		Moore, John	farmer	30	5	t	m f 8
1140		McIntyre, Thomas	laborer	31	5	f	m f 12
1148	j	Milne, Robert	farmer	30	6	f	m f 12
1149	j	Milne, Walter B	farmer	30	6	f	m f 12
1150	j	Milne, George D	farmer	30	6	f	m f 12
1151	j	Morgan, John	farmer	29	6	t	m f 13
1155		Moore, Peter	laborer	31	6	t	m f 12
1157	j	Michell, John H	farmer	31	6	t	m f 12
1167		Murray, John	laborer	31	5	t	m f 12
2062	j	Miller, William	gentleman	32	4	f	m f 8
288		McNeeley, Joseph	gentleman	35	6	f	m f 8
921		Moyer, Isaac A	gentleman	31	4	f	m f 7
1619		Maggs, James	farmer	35	6	f	m f 12
1223	j	Nowlan, Thomas	farmer	32	4	f	m f 8
1224	j	Nowlan, James	farmer	32	4	f	m f 8
1225	j	Nowlan, Robert	farmer	32	4	f	m f 8
1227		Nighawander, Eli	miller	35	6	f	m f 12
2064		Oke, John H	clergyman	32	4	t	m f 8
1365	j	Postill, Thomas	farmer	34	5	f	m f 12
1383		Paul, James	farmer	30	6	f	m f 12
1384		Postill, Frederick	auctioneer	34	5	t	m f 12
1401	j	Postill, Francis	farmer	35	6	f s	m f 12
1402		Pennock, William	laborer	32	6	t	m f 12

P. O.

m f 8
m f 8

m f 12
m f 8

m f 8
m f 8

m f 12
m f 12

m f 12
m f 8

m f 12
m f 8

m f 12
m f 12

m f 12
m f 12

m f 12
m f 12

m f 8
m f 8

m f 8
m f 8

m f 8
m f 8

m f 12
m f 12

m f 12
m f 12

m f 8
m f 8

m f 12
m f 7

m f 8

POLLING SUB DIVISION No. 9.

NO. ON ROLL.	JUROR.	NAME	OCCUPATION	LOT	CON	P. O.	
2070		Pherrell, Stewart	carpenter	31	4	t	m f 8
2073		Pallister, William	gentleman	30	5	f	m f 8
2074		Pennock, Samuel R	undertaker	31	5	f	m t 8
2084		Pennock, Joseph	shaper	31	4	t	m f 8
1473		Reesor, Samuel G	thresher	34	5	f	m f 8
1490		Robinson, Peter	ditcher	35	6	t	m f 12
2075		Rose, James	taylor	31	4	f	m f 8
2076	j	Reesor, Charles C	gardener	31	5	f	m f 8
1589	j	Stover, Menno	farmer	34	4	t	m f 7
1591	j	Smith, William L	farmer	35	5	t	m f 8
1610		Shank, William	laborer	29	5	t	m f 12
1620		Spence, Samuel	laborer	35	6	f	m f 12
2078		Smith, W H	mason	31	5	f	m f 8
2032		Siple, M E	clergyman	31	5	t	m f 8
2088		Smith, W H Jr	mason	32	4	f	m f 8
204	j	Spence, John	farmer	35	5	t	m f 21
1679	j	Thornton, James	farmer	33	5	f	m f 8
1680	j	Thornton, E A	traveller	33	5	f	m f 8
1685	j	Thornton, Edward	farmer	32	4	t	m f 8
1690	j	Tweedie, Robert	farmer	35	4	t	m f 8
1701	j	Turner, D S	farmer	29	5	f	m f 8
1702	j	Turner, Jacob	farmer	29	5	t	m f 8
1712	j	Turner, Marshall	farmer	33	6	f	m f 12
2087		Tran, George	Gentleman	32	4	f	m f 8
2091		Taylor, James	mercant	31	5	f	m f 8
1785		Wilson, Joseph	wright	31	4	f	m f 8
1791	j	White, Thomas	farmer	32	4	f	m f 8
1795		White, T P	farmer	32	5	f	m f 8
1797		Wonch, J W	farmer	30	4	f	m f 8
1799		Windsor, Norris	laborer	32	5	t	m f 12
1800		Windsor, John	shoemaker	32	5	f	m f 12
1801	j	Wilson, Benson	farmer	33	5	t	m f 12
1802		Wilson, John	farmer	33	5	f	m f 12

POLLING SUB-DIVISION No. 9.

67

NO. ON ROLL.	JUROR.	NAME.	OCCUPATION	LOT	CON	P. O.
2089		Windsor, Silas	shoemaker	31	5	f
2093		Weese, W O	millor	32	4	t
2096		Wetherell, H A	wright	32	4	t
1812		Wilbur, H B	laborer	31	5	t
1871	j	Young, Uriah	farmer	33	6	f

P. O.
m f 8
m f 8
m t 8
m f 8
m f 8
m f 12
m f 8
m f 8
m f 7
m f 8
m f 12
m f 12
m f 8
m f 8
m f 8
m f 21
m f 8
m f 8
m f 8
m f 8
m f 8
m f 12
m f 8
m f 8
m f 8
m f 8
m f 8
m f 12
m f 12
m f 12

Voters' List for 1898.

—: Municipality of the —:

* Township of Pickering *

Polling Sub Division No. 9.

Comprising all the lots from No. 29 to No. 85 inclusive, from the Fourth Concession Line to the Seventh Concession Line.

PART II.—Persons entitled to vote at Municipal Elections only.

NO. ON ROLL.	JUROR	NAME.	OCCUPATION	LOT	CON		P. O.
181		Burton, William	farmer	35	5	f	
030		Burton, F S		31	5	f	12
2032		Besse, Esther	widow	34	5	f	
2038		Burkholder, Ezra		31	5	f	
2046		Ball, James		31	5	f	
764		Button, W M	gentleman	35	5	f	21
1592		Bannerman, George		35	5	f	
1611		Beierl, Charles	undertaker	29	5	f	27
1686		Beaton, Mrs H	widow	32	4	f	29
1688		Beaton, Hector		32	4	f	29
1689		Beaton, F A		32	4	f	
2047		Cooper, Levi		31	4	f	29
199		Dunsheath, W S		35	6	f	
431		Doten, Mrs N	widow	33	6	f	12
2071		Dunbar, F J	solicitor	31	4	f	29
2094		Delong, Albert		32	4	f	19
2097		Hilts, Alexander		32	4	f	
1872		Jardine, David		31	5	f	
1158		Michell, A T	gentleman	31	6	f	23

POLLING SUB-DIVISION No. 9.

69

NO. ON ROLL.	JUROR.	NAME.	OCCAPATION	LOT	CON		6
2063		Milier, Mrs	widow	32	4	f	8
416		Nighswander, D B	merchant	33	6	f	21
2052		Ormiston, David	solicitor	32	4	f	17
2061		Peck, Mrs	widow	31	5	f	
1400		Postill, Ellen	widow	85	6	f	12
2072		Pallister, Mrs	widow	31	5	f	8
1465		Rae, Ellen	spinster	31	4	f	29
1590		Reesor, Christian	farmer	34	4	f	26
1691		Reesor, E A		35	4	f	
1597		Stephenson, James	gardener	35	5	f	21
1618		Searles, Elizabeth	widow	35	6	f	12
1703		Turner, John H		29	5	f	
1133		Ward, Thomas	teacher	30	5	f	29

ng *

the Fourth

P. O.
 12
 21
 27
 29
 29
 29
 12
 29
 19
 23

Voters' List for 1898.

—: Municipality of the —:

* Township of Pickering *

Polling Sub-Division No. 9.

Comprising all the Lots from No. 29 to No. 35 inclusive, from the Fourth Concession Line to the Seventh Concession Line.

PART III.—Persons entitled to vote at Elections to the Legislative Assembly only.

NO. ON ROLL.	JUROR.	NAME	OCCUPATION	LOT	CON		0
2048		Burkholder, Wesley	tailor	31	4		8
330		Carter, John	laborer	32	4	m f	8
501		Fretz, M C	laborer	34	4	m f	8
523		Flumerfelt, Mason	teacher	29	5	m f	12
744		Hamilton, Chester	laborer	31	4	m f	8
745		Hawkey, E H	teacher	31	4	m f	8
747		Hutchings, William	laborer	34	6	m f	12
769		Hawkins, Roger	laborer	33	6	m f	12
2054		Hilts, William	laborer	31	4	m f	8
2045		Hagerman, Llewellyn	smith	32	4	m f	8
916		King, William	laborer	31	5	m f	12
981		Lehman, Chester	painter	34	4	m f	8
1003		Lott, John	carpenter	32	5	m f	12
1252		Nighswander, Fred	laborer	33	6	m f	12
1373		Pennock, William jr	laborer	33	6	m f	12
2084		Pennock, Joseph	shaper	31	5	m f	8
1565		Stover, Levi	laborer	33	4	m f	8
1717		Tomlinson, William	laborer	29	6	m f	13
1742		Vardon, R B	gentleman	31	5	m f	8

POLLING SUB-DIVISION No. 9.

71

NO. ON ROLL.	JUROR.	NAME.	OCCAPATION	LOT	CON		o. r.
1812		Wilbur, H B	laborer	34	5	m f	8
1813		Windsor, John jr	laborer	31	5	m f	12
1830		Wolfe, Cornelius	laborer	31	6	m f	12
2081		White, B F	laborer	32	4	m f	8
2090		Waite, R M	bookkeeper	30	5	m f	8
2095		Weir, Frank	miller	31	4	m f	8

ng *

the Fourth

Assembly

o.
r.
8
8
8
12
8
8
12
12
8
8
12
8
12
12
12
8
8
13
8

Voters' List for 1898.

—: Municipality of the —:

* Township of Pickering *

Polling Sub-Division No. 10.

Comprising all the Lots from No. 1 to No. 10 inclusive, from the Seventh Concession Line to the Northern Townline.

PART I.—List of persons entitled to vote at both Municipal Elections and Elections to the Legislative Assembly.

NO. ON ROLL.	JUROR.	NAME	OCCUPATION	LOT	CON		6
48	j	Anson, John	farmer	1	9	f	
52		Arbuckle, William	laborer	5	9	t	m f 16
55		Allbright, James	laborer	10	9	t	m f 16
205	j	Birrell, David	farmer	10	7	f	m f 15
206	j	Birrell, Robert A	farmer	10	7	f	m f 10
209		Boyer, Abram	farmer	12	7	f	m f 10
223	j	Balsdon, John I	farmer	1	8	t	m f 16
224	j	Balsdon, William	farmer	1	8	t	m f 16
233		Baxter, Arthur	laborer	4	8	t	m f 16
227	j	Coultis, Wm H	farmer	2	8	f	m f 16
359		Coultis, George	gentleman	2	7	f	m f 16
365	j	Corner, William	farmer	1	7	t	m f 9
368	j	Cochrane, James	farmer	10	8	t	m f 15
369		Cochrane, William	farmer	10	8	f	m f 15
378	j	Ccates, Wm H	farmer	11	9	t	m f 15
417	j	Disney, John E	merchant	4	8	f	m f 16
433	j	Disney, Chas W	farmer	7	7	f	m f 16
434	j	Disney, John W	farmer	7	7	f	m f 16
443		Davidson, Jas I	farmer	1	8	f	m f 16

POLLING SUB-DIVISION No. 10.

73

No. ON ROLL.	JUROR.	NAME.	OCCUPATION	LOT	CON	P. O.
444	j	Davidson, Jas I jr	farmer	1	8	f m f 16
447	j	Dunn, John W	farmer	3	7	f m f 9
450	j	Disney, Samuel	farmer	6	7	t m f 16
452	j	Diamond, Peter	farmer	14	9	t m f 15
464	j	Everett, William	smith	4	8	f m f 16
465	j	Edwards, Willam	farmer	5	8	f m f 16
469	j	Evans, James jr	farmer	13	8	t m f 15
470	j	Evans, Thomas M	farmer	13	8	t m f 15
471		Eyans, James	farmer	13	8	t m f 15
234		Ellis, Abraham	millor	4	8	t m f 16
530		Florence, Charles	millor	8	8	t m f 15
624	j	Gauslin, Thomas	farmer	14	7	f m f 15
636	j	Gauslin, John	farmer	13	8	f m f 15
653		Gilroy, George	laborer	14	9	t m f 15
785		Harbron, William	farmer	5	7	f m f 9
786	j	Harbron, Frederick	farmer	5	7	f m f 9
787	j	Harbron, George	farmer	5	7	f m f 9
788	j	Harbron, William J	farmer	5	7	f m f 9
798	j	Hortop, James	farmer	8	8	t m f 16
814		Hardy, Simpson	laborer	6	9	t m f 16
823		Holdon, S J	farmer	9	9	f m f 16
824	j	Holden, Arthur P	farmer	9	9	f m f 16
850		Jones, John E	farmer	5	7	f m f 16
851	j	Jones, Joseph W	farmer	5	7	f m f 16
855	j	Jones, William H	farmer	3	8	f m f 16
859	j	Jones, Henry	farmer	7	7	t m f 16
860		Jones, John C	farmer	7	7	f m f 16
861	j	Jones, W F R	farmer	7	7	t m f 16
867		Jones, John R	laborer	4	8	t m f 16
869	j	Jones, John A	farmer	3	8	t m f 16
871	j	Jones, Wm P	farmer	5	8	f m f 16
873	j	Johnston, Arthur	farmer	11	7	f m f 10
874	j	Jones, Samuel H	farmer	6	8	f m f 16

POLLING SUB-DIVISION No. 10.

NO. ON ROLL.	JUROR.	NAME.	OCCAPATION	LOT	CON	P. O.	
880	j	Jones, David	farmer	3	8	t	m f 16
882	j	Jones, Joseph M	farmer	4	9	t	m f 16
884	j	Johnston, George	farmer	9	7	t	m f 16
886	j	Jones, George	farmer	9	9	f	m f 16
1013		Linton, Brian	laborer	12	8	t	m f 15
1017		Lee, Thomas	laborer	9	8	t	m f 15
1019	j	Linton, William	farmer	13	8	f	m f 15
1159	j	McAvoy, R W	farmer	3	7	f	m f 9
1160	j	Mowbray, R W	farmer	4	7	t	m f 9
1161		Mowbray, Hugh	farmer	4	7	f	m f 9
1162	j	Middleton, George jr	farmer	13	7	t	m f 15
1163	j	Middleton, William	farmer	13	7	t	m f 15
1164		Middleton, George	farmer	13	7	f	m f 15
1165	j	McAvoy, T C	farmer	8	7	f	m f 16
1169	j	Moore, John	farmer	8	8	t	m f 16
1178		Marnien, George	laborer	2	8	t	m f 16
1186	j	Madill, James B	farmer	14	7	t	m f 16
1190	j	McAvoy, John D	farmer	6	8	f	m f 11
1191	j	McAvoy, Frank	farmer	6	8	f	m f 16
1406	j	Pugh, David E	farmer	9	8	f	m f 15
1407	j	Pugh, William H	farmer	9	8	f	m f 15
1411	j	Proctor, Charles	farmer	11	8	f	m f 15
1412	j	Proctor, Charles jr	farmer	11	8	f	m f 15
1413		Philp, Wesley J	postmaster	4	9	t	m f 16
1421	j	Pugh, Armand	farmer	12	9	f	m f 15
1424	j	Pilkey, David	farmer	3	9	t	m f 16
1427	j	Scott, William G	farmer	12	8	f	m f 15
1628	j	Spencer, Henry	farmer	1	7	f	m f 9
1640		Spencer, Uriah	farmer	1	9	f	m f 19
1641	j	Spencer, Robert	farmer	1	9	f	m f 19
1642		Smith, James	carpenter	8	8	f	m f 16
1643		Sadler, J W	laborer	10	9	t	m f 15
1721	j	Taun, George	laborer	12	8	f	m f 15

Voters' List for 1898.

—: Municipality of the —:

* Township of Pickering *

Polling Sub-Division No. 10.

Comprising all the Lots from No. 1 to No. 10 inclusive, from the Seventh Concession Line to the Northern Townline.

PART II.—Persons entitled to vote at Municipal Elections only.

NO. ON ROLL.	JUROR	NAME.	OCCUPATION	LOT	CON		AGE.
448		Collins, Mrs J	widow	8	7	f	17
1187		Ensign, Mrs Van	widow	14	7	f	15
451		Hubbard, A		6	7	f	33
799		Hortop, Thomas		8	8	f	33
826		Hunt, Alfred		6	9	f	
1425		Howse, W R		3	9	f	
856		Jones, Mrs J L	widow	2	9	f	
872		Jones, Samuel		5	8	f	17
226		Mitchell, Joseph		1	8	f	17
225		Thompson, John		1	8	f	17
1730		Trew, Mr		10	8	f	
235		White, Thomas		4	8	f	
379		Waddell, Alexander		11	9	f	
1427		Warville, Mrs	widow	8	8	f	23

Voters' List for 1898.

—: Municipality of the —:

* Township of Pickering *

Polling Sub-Division No. 10.

Comprising all the Lots from No. 1 to No. 10 inclusive, from the Seventh Concession Line to the Northern Townline.

PART III.—Persons entitled to vote at Elections to the Legislative Assembly only.

NO. ON ROLL.	JUROR	NAME.	OCCUPATION	LOT	CON		P. O.
230		Bushby, John	laborer	13	9	m f	15
367		Crayford, William	laborer	9	6	m f	10
647		Graham, Edward	laborer	13	8	m f	15
876		Jones, James	laborer	4	8	m f	16
877		Jones, Uriah	laborer	4	8	m f	16
976		Laurence, Ira	teacher	14	9	m f	16
1015		Lee, Robert	laborer	14	8	m f	15
1023		Linton, Bryan jr	laborer	12	9	m f	15
1029		Lee, George	laborer	11	8	m f	15
1194		Mantle, Edward	laborer	13	9	m f	15
1201		Madill, Albert	laborer	3	8	m f	16
1202		Madill, Joseph H	teacher	3	8	m f	16
1492		Rivis, Thomas	laborer	10	7	m f	10
1725		Thompson, Robert	laborer	1	8	m f	16
1814		Wilson, Thos A	laborer	7	7	m f	16
1836		Wilkinson, James	laborer	9	7	m f	16
1837		Wilkinson, Richard	laborer	9	7	m f	10
1849		Wilson, Frank	laborer	1	9	m f	16

POLLING SUB-DIVISION No. 10.

NO. ON ROLL.	JUROR.	NAME.	OCCAPATION	LOT	CON		P. O.
1852		Walker, Alexander	laborer	1	8	m f	16
1866		Wilson, Andrew	laborer	8	9	m f	16
1867		Wilson, John	laborer	12	9	m f	16
1868		Waddell, William	laborer	11	9	m f	16

Voters' List for 1898.

—: Municipality of the —:

* Township of Pickering *

Polling Sub Division No. 11.

Comprising all the lots from No. 15 to No. 22 inclusive, from the Seventh Concession Line to the Northern Townline.

PART I.—List of persons entitled to vote at both Municipal Elections and Elections to the Legislative Assembly.

NO. ON ROLL.	JUROR.	NAME.	OCCUPATION	LOT	CON	P. O.	
2170		Astridge, George	jeweller	18	9	t	m f 15
2175		Anderson, William	mason	19	9	f	m f 15
220	j	Beelby, Matthew	farmer	20	8	f	m f 15
221	j	Beelby, Kirk	farmer	20	8	f	m f 15
239		Barry, John	farmer	19	8	f	m f 15
2176	j	Bundy, William	tinsmith	18	9	f	m f 15
2178	j	Bundy, Joshua	gentleman	19	9	f	m f 15
2185		Burgess, George	gentleman	18	9	f	m f 15
2186		Bray, Samuel	gentleman	18	8	f	m f 15
2188		Brodie, George M	physician	18	9	t	m f 15
2190		Bundy, George	undertaker	19	9	f	m f 15
2191	j	Brodie, Charles J	V S	18	8	f	m f 15
2196	j	Burton, Nicholas	harnessmk	19	9	f	m f 15
2199	j	Boyer, Ira D	gentleman	18	8	f	m f 15
2200		Banbury, George	laborer	19	9	t	m f 15
2203	j	Banyard, George	laborer	19	9	f	m f 15
2207		Bowes, Robert	laborer	18	9	t	m f 15
2209		Bundy, Abram	laborer	18	9	f	m f 15
846	j	Cochran, Smith	farmer	15	7	t	m f 11

POLLING SUB-DIVISION No. 11.

NO. ON ROLL.	JUROR.	NAME	OCCUPATION	LOT	CON	CO.	
377	j	Cooper, George	farmer	22	9	f	m f 15
2205		Compbell, Robert	R R	18	9	t	m f 15
2211	j	Collins, Joseph	laborer	18	9	t	m f 15
2219		Covington, William	merchant	18	9	t	m f 15
2221	j	Castor, Tobias	grain dlr	19	9	f	m f 15
2213	j	Dowswell, William	wright	19	9	f	m f 15
2214		Dunn, Thomas	convey'cer	18	9	f	m f 15
2217	j	Dolphin, Charles	laborer	19	8	f	m f 15
2228		Derusha, Edward	gentleman	18	9	f	m f 15
454		Evans, Edwin W	wood wkr	15	9	f	m f 15
472	j	Evans, Josiah	farmer	16	9	f	m f 15
2223	j	Evans, Rolph	laborer	18	9	f	m f 15
2225		Eastwood, W F	physician	18	8	f	m f 15
520	j	Forsyth, Daniel	farmer	17	8	f	m f 15
521	j	Forsyth, Malcolm	farmer	17	8	f	m f 15
523	j	Forgie, John jr	farmer	19	9	t	m f 15
529		Forgie, John	gentleman	19	9	f	m f 15
2226		Farmer, Frederick	tailor	18	9	f	m f 15
2227	j	Forsyth, Caleb	teamster	18	9	t	m f 15
2228		Forsyth, Elias	laborer	18	9	t	m f 15
2230		Found, Henry	mason	18	9	f	m f 15
2231	j	Farmer, John S	shoemaker	18	9	f	m f 15
2261		Findlay, W B	clergyman	19	8	t	m f 15
643	j	Graham, Thomas	farmer	22	8	t	m f 15
644	j	Graham, John	farmer	22	8	t	m f 15
649		Gibson, William	laborer	21	8	t	m f 15
660		Gregg, Joseph	gentleman	18	9	f	m f 15
661	j	Gregg, William J	farmer	18	9	f	m f 15
2233	j	Gibson, John	laborer	18	9	f	m f 15
2234	j	Gerow, George	manufact'r	18	9	f	m f 15
2235	j	Gerow, John	manufact'r	18	9	f	m f 15
2239	j	Graham, W J	smith	19	9	t	m f 15
2242		Gibbons, Thomas	merchant	19	9	f	m f 15

POLLING SUB-DIVISION No. 11.

81

NO. ON ROLL.	JUROR.	NAME.	OCCUPATION	LOT	CON		6
2244		Green, Thomas	R R	18	9	f	m f 15
2258		Graham, John W	livery kpr	18	8	f	m f 15
2259		Gibson, James	constable	18	9	t	m f 15
348		Gibson, Edward	laborer	15	7	f	m f 15
800		Harvey, James	smith	18	9	t	m f 15
802	j	Hood, William	farmer	20	7	f	m f 15
810	j	Henry, William	merchant	18	9	t	m f 15
2237		Howe, John	carpenter	18	9	t	m f 15
2245	j	Hopper, R P	Gentleman	18	9	f	m f 15
2246	j	Henderson, Magnus	shoemaker	18	9	f	m f 15
2248	j	Hutchison, Foster	tp collector	19	9	f	m f 15
2250	j	Hopper, David	merchant	19	8	t	m f 15
2255	j	Hamilton, Andrew	gentleman	19	8	f	m f 15
2256	j	Jobbitt, James H	shoemaker	18	9	f	m f 15
2264	j	Leaper, William	carpenter	18	8	f	m f 15
2265		Linton, Joseph	laborer	18	9	t	m t 15
2268		Linton, William	laborer	18	9	t	m f 15
2270		Linton, Peter	laborer	19	9	t	m f 15
2227		Leggott, James	R R	19	9	t	m f 15
2281		Leggott, Thomas W	clergyman	18	9	t	m f 15
2310		Law, Joseph	gentleman	18	9	f	m f 15
1166	j	Madill, James H	farmer	19	7	f	m f 11
1176		Madill, Henry	farmer	20	7	f	m f 11
1177	j	Madill, Sylvanus	farmer	20	7	f	m f 11
1180		Miller, John	farmer	17	7	f	m f 11
1182	j	Miller, John jr	farmer	17	7	f	m f 11
1183	j	Miller, George	farmer	17	7	f	m f 11
1184	j	Miller, Andrew	farmer	17	7	f	m f 11
1185	j	Miller, Henry	farmer	17	7	f	m f 11
1189	j	Mitchell, Tobias	farmer	18	8	f	m f 15
1203	j	Mitchell, Charles A	farmer	19	8	f	m f 15
1204	j	Mitchell, W J	farmer	19	8	f	m f 15
1208	j	McFerlane, James	farmer	20	9	f	m f 15

NO. ON ROLL.	JUROR.	NAME	OCCUPATION	LOT	CON		6
1218	j	Morgan, George G	farmer	18	9	f	m f 15
2288		Middleton, Charles	gentleman	18	8	f	m f 15
2284		Macnab, John M	postmaster	18	8	f	m f 15
2285		Macnab, Duncan	merchant	18	8	f	m f 15
2286		Mason, William	laborer	18	9	t	m f 15
2289	j	Michell, Henry T	gentleman	18	8	t	m f 15
2291	j	Macnab, Peter	clerk	18	9	f	m f 15
2298	j	Macnab, John C	clerk	19	9	f	m f 15
2294		Macnab, Peter jr	clerk	19	9	f	m f 15
2296		Morgan, Alexander	gentleman	18	9	f	m f 15
2800		McKay, Angus	barber	18	9	t	m f 15
1408	j	Pilkey, Joseph	farmer	17	8	f	m f 15
1409	j	Pilkey, Luther	farmer	18	7	f	m f 15
1410	j	Pilkey, Lyman J	farmer	17	8	f	m f 15
1415		Pugh, Price	farmer	22	9	f	m f 15
1418	j	Pugh, Edward E	farmer	16	7	f	m f 15
1419	j	Pugh, Levi	farmer	18	7	f	m f 15
1420		Pugh, David	gentleman	18	7	f	m f 15
1422		Powrie David	R R	18	9	t	m f 15
1426	j	Pugh, Thomas E	farmer	18	9	f	m f 15
2298		Palmer, B S	merchant	19	9	f	m f 15
2302		Powell, W H	gentleman	18	9	t	m f 15
2304	j	Powell, Ira	agent	19	9	f	m f 15
2305	j	Patterson, Thomas	carpenter	18	9	f	m f 15
1488	j	Russell, David	farmer	15	7	f	m f 11
1489	j	Russell, John	farmer	15	7	f	m f 11
1498	j	Rumohr, Sherman E	butcher	19	9	f	m f 15
1495		Rumohr, Peter	farmer	15	8	t	m f 15
1508		Reid, John	farmer	18	9	f	m f 15
1504	j	Rawson, Albert	mason	19	9	f	m f 15
2808		Roberts, Henry	R R	19	9	t	m f 15
2814	j	Rawson, Reuben	carpenter	19	9	f	m f 15
2815	j	Rusnell, Albert	drover	19	9	t	m f 15

POLLING SUB DIVISION No. 11.

88

NO. ON ROLL.	JUROR.	NAME.	OCCAPATION	LOT	CON	P. O.	
2317		Rawson, W W	tailor	19	9	t	m f 15
1626		Scott, William	farmer	21	8	f	m f 15
1634	j	Slack, Joseph	farmer	19	9	t	m f 15
1639	j	Sowden, Francis	farmer	16	6	f	m f 15
2309	j	Spofford, Frank	farmer	18	9	f	m f 15
2312	j	Sharrard, Amos	carpenter	18	3	t	m f 15
2319	j	Stokes, George	farmer	18	8	f	m f 15
1724		Tracey, Alfred	gentleman	18	9	f	m f 15
1729	j	Tarr, Nathan	baker	19	9	f	m f 15
2320	j	Thomson, Henry	smith	18	9	f	m f 15
1733	j	Underhill, James	farmer	20	8	t	m f 15
1734	j	Underhill, John	farmer	19	8	t	m f 15
1735		Underhill, Robert	farmer	19	8	f	m f 15
1736	j	Underhill, John	farmer	21	9	t	m f 15
1774	j	Wright, Frederick	farmer	20	7	t	m f 11
1831	j	Wilson, Thomas	farmer	20	7	t	m f 11
1832	j	Wilson, William T	farmer	20	7	f s	m f 11
1856		White, George	R R	21	9	t	m f 15
2325		Ward, Robert W	manufact'r	18	9	f	m f 15
2327	j	Wilson, Alexander	hotelkeeper	18	9	t	m f 15
2329		White, Alexander	clergyman	18	8	t	m f 15
2326		Young, William	gentleman	19	9	f	m f 15

i m f 15
 f m f 15
 f m f 15
 f m f 15
 t m f 15
 t m f 15
 f m f 15
 f m f 15
 f m f 15
 f m f 15
 t m f 15
 f m f 15
 f m f 15
 f m f 15
 f m f 15
 t m f 15
 f m f 15
 f m f 15
 f m f 15
 f m f 15
 t m f 15
 f m f 15
 t m f 15

Voters' List for 1898.

—: Municipality of the :—

* Township of Pickering *

Polling Sub Division No. 11.

Comprising all the lots from No. 15 to No. 22 inclusive, from the Seventh Concession Line to the Northern Townline.

PART II.—Persons entitled to vote at Municipal Elections only.

NO. ON ROLL.	JUROR	NAME.	OCCUPATION	LOT	CON		5 2
2188		Besse, Mrs E	widow	18	8	t	15
2192		Bell, Mary A	spinster	18	9	f	15
2193		Bell, Ruth	spinster	18	9	f	15
2198		Brown, Mrs M	widow	18	9	f	15
2208		Bundy, David		18	9	f	29
2212		Birreil, James		18	9	f	
2241		Coates, Mrs	widow	19	9	f	
2303		Cunningham, Mrs	widow	18	9	f	
2215		Dunn, Miss M	spinster	18	9	f	
2216		Dolphin, M A	widow	19	8	f	15
2224		Evans, Melissa J	widow	18	9	f	15
527		Found, Mrs	widow	18	9	f	15
2177		Gunn, Matilda	spinster	18	9	f	15
683		Gibson, Mrs Win	widow	19	8	f	15
664		Garbutt, Charles	farmer	18	9	f	33
665		Goode, Cephas		18	9	f	29
2316		Gentle, Henry	mason	19	9	f	29
473		Hubbard, Duncan	teacher	16	9	f	
2273		Hyfield, Mrs J	widow	19	9	t	15

NO. ON ROLL.	JUROR	
2301		John
1012		Law
2271		Lin
2272		Lin
2240		Mu
2279		Mc
2280		Mil
1209		Mc
1210		Mc
1211		Mc
1212		Mc
1635		Mic
645		Nes
2297		Pal
2299		Pic
2306		Pat
2307		Rav
2274		Sto
2278		Sea
1633		Sad
2311		Sha
2252		Tho
2253		Tho

POLLING SUB DIVISION No. 11.

85

NO. ON ROLL.	JUROR.	NAME.	OCCAPATION	LOT	CON	6 2
2301		Johnston, Thomas	tailor	18	9	f
1012		Lawrence, Paul		19	8	f
2271		Linton, John F		19	9	f
2272		Linton, Mrs H	widow	18	8	f
2240		Murray, Mrs E	widow	18	9	f
2279		McDonald, Chas		18	9	f
2280		Milne, Mrs C	widow	18	8	f
1209		McFarlane, David		20	9	f
1210		McFarlane, Agnes	spinster	20	9	f
1211		McFarlane, Walter		20	9	f
1212		McCreight, Mr		20	9	f
1635		Michell, Chas V		19	9	f
645		Nesbitt, Robert	farmer	22	8	f
2297		Pallister, Margaret	widow	18	8	f
2299		Pickett, Margaret	widow	18	9	f
2306		Patterson, Mrs H	widow	18	9	f
2307		Rawson, Martha	widow	19	9	f
2274		Stokes, Mrs R	widow	19	9	f
2278		Scarr, Mrs	widow	19	9	f
1633		Sadler, Mrs Robt	widow	18	9	f
2311		Sharrard, Ruth	widow	18	9	f
2252		Thompson, Thomas		18	9	f
2253		Thompson, Jno W		18	9	f

Voters' List for 1898.

—: Municipality of the —:

* Township of Pickering *

Polling Sub Division No. 11.

Comprising all the lots from No. 15 to No. 22 inclusive, from the Seventh Concession Line to the Northern Townline.

PART III.—Persons entitled to vote at Elections to the Legislative Assembly only.

NO. ON ROLL.	JUROR	NAME.	OCCUPATION	LOT	CON		0 2
37		Adamson, Samuel	laborer	19	7	m f	15
50		Anderson, Arthur	laborer	18	9	m f	15
54		Anderson, Samuel	laborer	19	8	m f	15
2181		Bundy, Judson	laborer	19	9	m f	15
2182		Bundy, J D	laborer	18	8	m t	15
2202		Burton, Charles	laborer	19	9	m f	15
2204		Bowes, Luther	clerk	18	8	m f	15
373		Carson, Wm J	laborer	15	8	m f	15
449		Day, Robert W	laborer	19	8	m f	15
2218		Dolphin, Duncan	laborer	19	8	m f	15
533		Forsyth, Abijah	laborer	18	8	m f	15
534		Forsyth, Ellsworth	laborer	17	8	m f	15
2232		Forsyth, Thomas	laborer	18	9	m f	15
646		Graham, Thomas	laborer	15	8	m f	15
667		Garbutt, Charles jr	laborer	18	9	m f	15
2243		Gibbons, George	laborer	19	9	m f	15
603		Gourlie, James	laborer	22	9	m f	15
809		Hutchison, Robert	laborer	19	8	m f	15
825		Hardy, Wesley	laborer	17	7	m f	15

POLLING SUB-DIVISION No. 11.

87

NO. ON ROLL.	JUROR.	NAME.	OCCUPATION	LOT	CON		P. O.
2247		Hickingbottom, Thomas	laborer	18	8	m f	15
2249		Hughes, T B	st agent	18	9	m f	15
2257		King, Hay	contractor	18	9	m f	15
2261		Kennedy, D W	tinsmith	19	9	m f	15
1024		Linton, Joseph jr	laborer	19	9	m f	15
1027		Lidgett, George	laborer	22	9	m f	15
1219		Mantle, Joseph	laborer	19	9	m f	15
2290		Mantle, Albert	laborer	18	8	m f	15
1239		Neal, Lawrence	laborer	22	9	m f	15
1428		Plumtree, Thomas	laborer	16	9	m f	15
1726		Thompson, Joseph	laborer	18	9	m f	15
2323		Torrie, Arthur E	teacher	19	9	m f	15
2324		Thomson, William	smith	18	9	m f	15
1874		Young, James	laborer	20	9	m f	15

X

nth

ably

o
a

15
15

15
15

15
15

15
15

15
15

15
15

15
15

15
15

15
15

15

Voters' List for 1898.

—: Municipality of the —:

* Township of Piekering *

Polling Sub-Division No. 12.

Comprising all the Lots from No 23 to No 35 inclusive, from the Seventh Concession Line to the Northern Townline.

PART I.—List of persons entitled to vote at both Municipal Elections and Elections to the Legislative Assembly.

NO. ON ROLL.	JUROR.	NAME	OCCUPATION	LOT	CON		
210		Burk, William H	farmer	30	7	f	m f 12
213	j	Burkholder, Solomon	farmer	29	8	f	m f 13
214	j	Burkholder, Menno	farmer	35	7	f	m f 22
216	j	Beelby, Frank	farmer	29	7	t	m f 15
218	j	B, ander, John	farmer	29	7	t	m f 13
222	j	Byer, Henry	farmer	30	8	f	m f 13
228	j	Barkey, Wilmot G	farmer	28	9	f	m f 14
229		Barkey, Daniel	farmer	28	9	f	m f 14
231		Bayles, John	farmer	32	9	t	m f 14
236	j	Blackburn, Enos	farmer	23	9	t	m f 14
772		Barkey, Anthony	gentleman	33	7	f	m f 23
362	j	Cowie, William	farmer	26	7	f	m f 13
370	j	Cowie, Robert D	farmer	27	7	t	m f 13
372		Conley, William	farmer	30	7	f	m f 13
374	j	Coultis, William J	farmer	24	8	f	m f 15
375	j	Cliff, Lincoln	manufact'r	31	9	t	m t 14
376		Cliff, Edwin	gentleman	31	9	f	m f 14
380		Cooney, William	laborer	26	9	t	m f 15
486	j	Dunkeld, James	farmer	32	7	f	m f 3

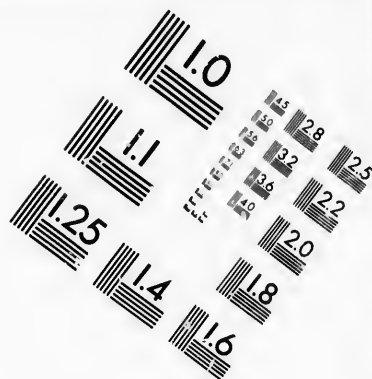
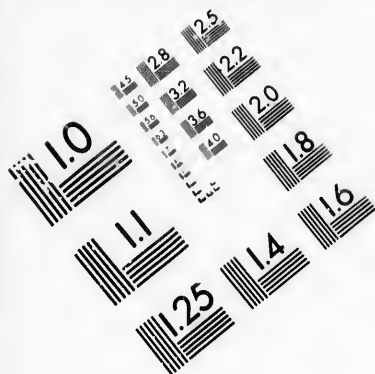
NO. ON ROLL.	JUROR.	
487	j	Dun
488	j	Dun
445	j	Dav
476	j	Elfo
582	j	For
626	j	Gos
689	j	Gre
640		Gre
641	j	Gre
642	j	Gre
648		Gig
651	j	Gou
655	j	Gra
656	j	Gra
657	j	Gra
662		Gie
770	j	Ho
771	j	Ho
783		Hu
789	j	Ha
790	j	Ho
791	j	Ho
792	j	Ho
793	j	Ho
794	j	Ho
807	j	Ho
908	j	Ho
812		Ha
816	j	Ha
818	j	Ho
819	j	Ho
820	j	Ho
821	j	Ho

POLLING SUB-DIVISION No. 12.

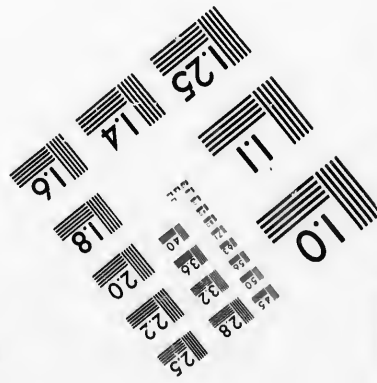
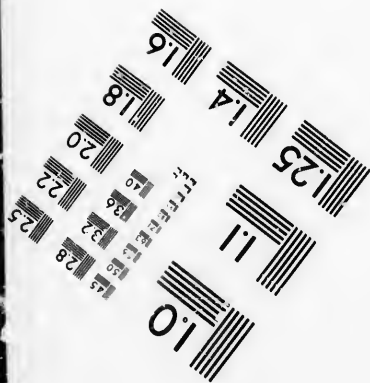
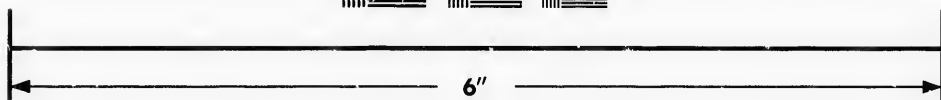
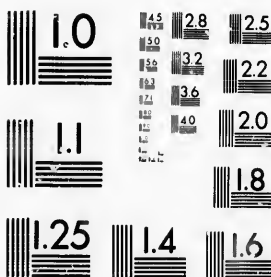
89

NO. ON ROLL.	JUROR.	NAME.	OCCUPATION	LOT	CON	P. O.
487	j	Dunkeld, William	farmer	32	7	f m f 13
488	j	Dunkeld, Thomas	farmer	32	7	f m f 13
445	j	Davis, Philip J	farmer	31	8	f m f 14
476	j	Elford, Henry	farmer	24	9	t m f 15
532	j	Forsyth, Ralph	farmer	31	9	f m f 14
626	j	Gostick, Thomas C	farmer	24	7	f m f 11
639	j	Gregg, Hugh jr	farmer	26	8	f m f 15
640		Gregg, Hugh	farmer	25	8	f m f 15
641	j	Gregg, David	farmer	25	8	f s m f 15
642	j	Gregg, Thomas	farmer	25	8	f s m f 15
648		Gigg, Joseph	farmer	35	8	f m f 22
651	j	Gourlie, William	farmer	25	9	t m f 15
655	j	Graham, Robert	farmer	23	9	f m f 15
656	j	Graham, Wm M	farmer	23	9	f m f 15
657	j	Graham, Thomas	V S	23	9	f m f 15
662		Giebner, Otto	farmer	35	8	t m f 22
770	j	Hoover, Daniel	farmer	33	7	t m f 12
771	j	Hoover, Walter F	farmer	33	7	t m f 12
783		Hunter, Thomas	farmer	24	7	t m f 11
789	i	Hanson, James	laborer	29	7	f m f 13
790	j	Hoover, Samuel B	farmer	30	7	f m f 13
791	j	Hoover, Noah B	farmer	35	7	f m f 22
792	j	Hoover, John G	farmer	34	9	f m f 23
793	j	Hoover, Isaiah	farmer	34	9	f m f 23
794	j	Hoover, Joseph	farmer	34	9	f m f 23
807	j	Hoover, Simon	farmer	33	8	f m f 14
908	j	Hoover, Albert	farmer	33	8	f m f 14
812		Hatley, Walter	laborer	27	8	t m f 14
816	j	Harris, John	farmer	26	7	t m f 13
818	j	Hoover, Jacob B	farmer	34	8	f m f 14
819	j	Hoover, Elias B	farmer	34	8	f m f 14
820	j	Hoover, John R	farmer	32	8	f m f 14
821	j	Hoover, John A	farmer	28	9	f m f 14





**IMAGE EVALUATION
TEST TARGET (MT-3)**



**Photographic
Sciences
Corporation**

23 WEST MAIN STREET
WEBSTER, N.Y. 14580
(716) 872-4503

14
16
18
20
22
25
28
32
36
40
45
50
56
63
71
80
90
100

10
11
12
13
14
15
16
17
18
19
20
21
22
23
24
25
26
27
28
29
30
31
32
33
34
35
36
37
38
39
40
41
42
43
44
45
46
47
48
49
50
51
52
53
54
55
56
57
58
59
60
61
62
63
64
65
66
67
68
69
70
71
72
73
74
75
76
77
78
79
80
81
82
83
84
85
86
87
88
89
90
91
92
93
94
95
96
97
98
99
100

POLLING SUB-DIVISION No. 12.

NO. ON ROLL.	JUROR.	NAME	OCCUPATION	LOT	CON	P. O.	
857		Jones, Alexander	laborer	23	8	t	m f 15
863		Jerman, Henry	smith	28	7	t	m f 13
878		Johnston, Michael	farmer	32	9	f	m f 14
879	j	Johnston, Frederick	farmer	32	9	f	m f 14
918		Kester, Enoch	farmer	29	9	t	m f 14
919		Kester, Marshall	farmer	29	9	f	m f 14
922	j	Kester, Lorne	farmer	35	9	f	m f 23
923	j	Kirby, George	farmer	33	7	t	m f 13
924		Lott, Ralph	farmer	33	7	f	m f 13
1016	j	Lapp, Alexander	farmer	31	8	f	m f 13
1020		Lapp, Seth.	carpenter	35	8	f	m f 22
1021	j	Leaning, A B	farmer	35	8	f	m f 22
1022	j	Lehman, Henry	farmer	35	8	f	m f 22
1025		Lehman, Ephriam	laborer	29	9	f	m f 14
1026		Lehman, Benjamin	jeweller	29	9	f	m f 14
1028	j	Lott, Hiram B	agent	33	7	f	m f 13
1192	j	McAvoy, Charles C	farmer	32	8	t	m f 13
1195	j	Meyer, Jacob	farmer	29	9	t	m f 14
1196		Meyer, Edward	farmer	29	9	f	m f 14
1197		Mantle, Abram	laborer	29	9	f	m f 14
1198	j	McDonald, Patrick	farmer	25	8	t	m f 13
1199	j	McDonald, W J	farmer	25	8	t	m f 13
1205	j	Mowder, Joseph	farmer	33	8	t	m f 22
1206	j	Mowder, Joshua W	farmer	33	8	t	m f 22
1214		Monkhouse, Joseph	postmaster	30	9	f	m f 14
1215	j	Monkhouse, W J	merchant	39	9	f	m f 14
1217	j	Mowder, Nelson	laborer	31	9	f	m f 14
1228	j	Neal, James	farmer	24	8	t	m f 15
1240	j	Nighswander, Christian	farmer	35	7	f	m f 22
1241	j	Nighswander, Ralph	farmer	35	7	f	m f 22
1245	j	Nighswander, Michael	farmer	34	7	f	m f 22
1246	j	Nighswander, Tillman	farmer	34	7	f	m f 22
1247	j	Nighswander, A B	shoemaker	31	8	f	m f 13

POLLING SUB DIVISION No. 12.

91

NO. ON ROLL.	JUROR.	NAME.	OCCAPATION	LOT	CON		P. O.
1249		Nighswander, Martin	farmer	31	9	f	m f 14
1250	j	Nighswander, Enos	farmer	31	9	f s	m f 14
1388	j	Pipher, Andrew	farmer	34	7	f	m f 12
1389	i	Pipher, Wesley	farmer	34	7	f	m f 12
1416	j	Pugh, William D	farmer	24	9	t	m f 15
1494	j	Richardson, George	farmer	25	9	f	m f 15
1497	j	Reesor, Elias	farmer	27	9	f	m f 14
1499	j	Reesor, Barkis	farmer	27	9	f	m f 14
1500	j	Reesor, Flavius	carpenter	29	9	f	m f 14
1501		Reesor, Aylmer	carpenter	29	9	f	m f 14
1502		Reesor, Abram	milller	30	9	f	m f 14
1505	j	Roper, Henry	farmer	33	9	t	m f 14
1625	j	Spears, Adam	farmer	29	7	f	m f 13
1630		Shepherdson, William	laborer	30	7	t	m f 13
1632	j	Story, Andrew	farmer	23	8	f	m f 15
1645		Slack, James	farmer	24	9	t	m f 15
1624	j	Stewart, Peter	farmer	28	7	f	m f 13
1716	j	Turner, W B	farmer	32	7	f	m f 12
1718	j	Turner, W J	farmer	31	7	t	m f 12
1731		Underhill, James	farmer	25	7	t	m f 13
1839	j	Wilson, Newrick	farmer	23	7	f	m f 11
1842	j	Whitson, Robert	farmer	28	8	f	m f 13
1843	j	Whitson, John	farmer	28	8	f	m f 13
1844		White, John	farmer	29	9	f	m f 14
1845	j	White, Francis	farmer	29	9	f	m f 14
1853		Wideman, Joseph	postmaster	29	8	t	m f 14
1859		Walker, George	laborer	29	9	f	m f 14
1873	j	Yake, Harmon	farmer	33	9	f	m f 14

Voters' List for 1898.

--: Municipality of the :-

* Township of Pickering *

Polling Sub-Division No. 12.

Comprising all the Lots from No 23 to No 35 inclusive, from the Seventh Concession Line to the Northern Townline.

PART II.—Persons entitled to vote at Municipal Elections only.

NO. ON ROLL.	JUROR	NAME.	OCCUPATION	LOT	CON		0 P.
51		Alsop, Hiram		25	9	f	14
477		Bennett, Thomas	hotelkeeper	24	9	f	33
603		Burkholder, A B		35	8	f	25
1193		Bentley, Mrs	widow	32	8	f	23
1719		Burkholder, David		31	7	f	22
1854		Brownsberger, David		29	8	f	
237		Coates, George W		23	9	f	14
371		Cowie, Mrs John	widow	27	7	f	13
1631		Coulson, David		30	7	f	35
1720		Conley, Mrs W	widow	31	7	f	25
435		Dunkeld, Mrs T	widow	32	7	f	13
526		Forsyth, Susan	widow	30	9	f	14
1857		Freel, S L	physician	35	9	f	23
658		Graham, Mary	widow	23	9	f	15
805		Hayward, Alfred		24	8	f	14
806		Hayward, Hannah	widow	24	8	f	14
822		Hoover, M R	milller	28	9	f	26
875		Johnston, Mrs A	widow	26	8	f	13
1506		Morgan, George		33	9	f	27

POLLING SUB-DIVISION No. 12.

93

NO. ON ROLL.	JUROR.	NAME.	OCCAPATION	LOT	CON		P. O.
1507		Morgan, Thomas		33	9	f	27
1242		Nighswander, Henry		34	7	f	29
1244		Nighswander, Jacob		84	7	f	29
1637		Spofford, Mrs	widow	26	9	f	15
1646		Sypher, David		24	9	f	23
817		Whitson, Lydia	widow	26	7	f	8
1856		Wideman, Mrs	widow	35	9	t	23
1858		Wideman, Chris		35	9	f	23

6
2
14
33
25
23
22
14
13
35
25
13
14
23
15
14
14
26
13
27

POLLING SUB-DIVISION No. 12.

NO. ON ROLL.	JUROR.	NAME	OCCUPATION	LOT	CON		P. O.
1647		Scott, John	laborer	32	9	m f	14
1648		Story, Eli	laborer	31	9	m f	14
1727		Todd, William	laborer	27	7	m f	13
1855		Wallace, R B	laborer	30	8	m f	13

Voters' List for 1898.

—: Municipality of the —:

* Township of Pickering *

Polling Sub-Division No. 12.

Comprising all the Lots from No 23 to No 35 inclusive, from the Seventh Concession Line to the Northern Townline.

PART III.—Persons entitled to vote at Elections to the Legislative Assembly only.

NO. ON ROLL.	JUROR	NAME.	OCCUPATION	LOT	CON		P. O.
57		Alien, Edward	laborer	32	8	m f	13
215		Burkholder, Joseph	laborer	35	7	m f	22
238		Bundy, Jav	laborer	23	9	m f	15
535		Forsyth, Daniel jr	laborer	23	9	m f	15
731		Hackney, Charles	laborer	23	7	m f	11
795		Hanson, Daniel	laborer	29	7	m f	13
797		Hoover, Harvey	laborer	35	7	m f	22
1171		Madill, Alexander	laborer	33	7	m f	11
1172		Madill, James	laborer	33	7	m f	11
1173		Madill, Thomas	laborer	33	7	m f	11
1173		Madill, John	laborer	33	7	m f	11
1216		Monkhouse, John	clerk	30	9	m f	14
1220		Meek, William	laborer	23	9	m f	15
1232		Neal, Thomas	laborer	27	8	m f	14
1248		Nighswander, Wilfred	laborer	31	8	m f	13
1399		Percy, William H	laborer	29	7	m f	12
1486		Riddell, James	laborer	30	7	m f	13
1498		Reesor, William	laborer	27	9	m f	14
1629		Stuttaford, John	laborer	26	7	m f	13

CERTIFICATE.

I hereby certify that the aggregate number of names on the foregoing List, qualified to serve as Jurors, is eight hundred and fifty-three. (853).

D. R. BEATON,

Clerk of Pickering Township.

I Donald Robert Beaton, Clerk of the Municipality of the Township of Pickering, in the County of Ontario, do hereby certify that Parts I and III of the within Voters' List constitutes a correct list for the year 1898 of all persons, appearing by the last revised Assessment Roll of the said Municipality to be entitled to vote at Elections for members of the Legislative Assembly; and that Parts I and II constitutes a correct list for the said year of all persons appearing by said Roll to be entitled to vote at Municipal elections in the said Municipality; and I hereby call upon all electors to examine the said list, and if any omissions or other errors are perceived therein, to take immediate proceedings to have said errors corrected according to law.

Dated at Pickering, this 30th day of July, 1898.

Donald R. Beaton
.....

Clerk of the Municipality of the
Township of Pickering,
Whitevale, P. O.

nes on the
hundred and

ng Township.

Township of
at Parts I and
r 1898 of all
Municipality
ve Assembly ;
of all persons
s in the said
said list, and
mmediate pro

.....

of the
ickering,
iteyale, P. O.

