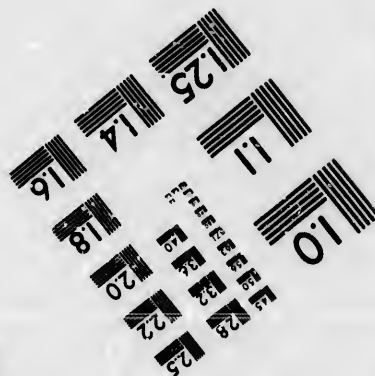
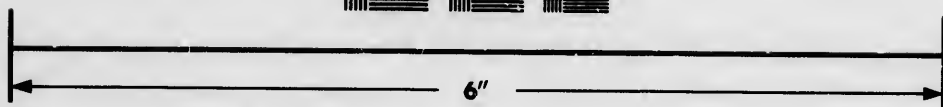
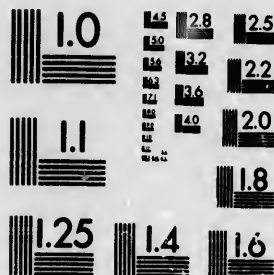


**IMAGE EVALUATION
TEST TARGET (MT-3)**



**Photographic
Sciences
Corporation**

23 WEST MAIN STREET
WEBSTER, N.Y. 14580
(716) 872-4503

**CIHM/ICMH
Microfiche
Series.**

**CIHM/ICMH
Collection de
microfiches.**



Canadian Institute for Historical Microreproductions / Institut canadien de microreproductions historiques

© 1986

Technical and Bibliographic Notes/Notes techniques et bibliographiques

The Institute has attempted to obtain the best original copy available for filming. Features of this copy which may be bibliographically unique, which may alter any of the images in the reproduction, or which may significantly change the usual method of filming, are checked below.

L'institut a microfilmé le meilleur exemplaire qu'il lui a été possible de se procurer. Les détails de cet exemplaire qui sont peut-être uniques du point de vue bibliographique, qui peuvent modifier une image reproduite, ou qui peuvent exiger une modification dans la méthode normale de filmage sont indiqués ci-dessous.

- Coloured covers/
Couverture de couleur
- Covers damaged/
Couverture endommagée
- Covers restored and/or laminated/
Couverture restaurée et/ou pelliculée
- Cover title missing/
Le titre de couverture manquant
- Coloured maps/
Cartes géographiques en couleur
- Coloured ink (i.e. other than blue or black)/
Encre de couleur (i.e. autre que bleue ou noire)
- Coloured plates and/or illustrations/
Planches et/ou illustrations en couleur
- Bound with other material/
Relié avec d'autres documents
- Tight binding may cause shadows or distortion along interior margin/
La reliure serrée peut causer de l'ombre ou de la distorsion le long de la marge intérieure
- Blank leaves added during restoration may appear within the text. Whenever possible, these have been omitted from filming/
Il se peut que certaines pages blanches ajoutées lors d'une restauration apparaissent dans le texte, mais, lorsque cela était possible, ces pages n'ont pas été filmées.
- Additional comments:
Commentaires supplémentaires:

- Coloured pages/
Pages de couleur
- Pages damaged/
Pages endommagées
- Pages restored and/or laminated/
Pages restaurées et/ou pelliculées
- Pages discoloured, stained or foxed/
Pages décolorées, tachetées ou piquées
- Pages detached/
Pages détachées
- Showthrough/
Transparence
- Quality of print varies/
Qualité inégale de l'impression
- Includes supplementary material/
Comprend du matériel supplémentaire
- Only edition available/
Seule édition disponible
- Pages wholly or partially obscured by errata slips, tissues, etc., have been refilmed to ensure the best possible image/
Les pages totalement ou partiellement obscurcies par un feuillet d'errata, une pelure, etc., ont été filmées à nouveau de façon à obtenir la meilleure image possible.

This item is filmed at the reduction ratio checked below/
Ce document est filmé au taux de réduction indiqué ci-dessous.

10X	12X	14X	16X	18X	20X	22X	24X	26X	28X	30X	32X
							✓				

The copy filmed here has been reproduced thanks to the generosity of:

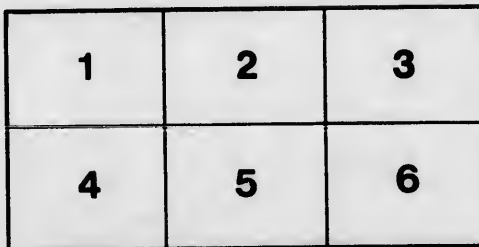
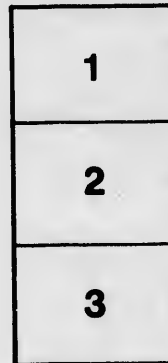
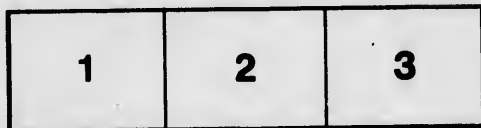
Library of the Public
Archives of Canada

The images appearing here are the best quality possible considering the condition and legibility of the original copy and in keeping with the filming contract specifications.

Original copies in printed paper covers are filmed beginning with the front cover and ending on the last page with a printed or illustrated impression, or the back cover when appropriate. All other original copies are filmed beginning on the first page with a printed or illustrated impression, and ending on the last page with a printed or illustrated impression.

The last recorded frame on each microfiche shall contain the symbol \rightarrow (meaning "CONTINUED"), or the symbol ∇ (meaning "END"), whichever applies.

Maps, plates, charts, etc., may be filmed at different reduction ratios. Those too large to be entirely included in one exposure are filmed beginning in the upper left hand corner, left to right and top to bottom, as many frames as required. The following diagrams illustrate the method:



L'exemplaire filmé fut reproduit grâce à la générosité de:

La bibliothèque des Archives
publiques du Canada

Les images suivantes ont été reproduites avec le plus grand soin, compte tenu de la condition et de la netteté de l'exemplaire filmé, et en conformité avec les conditions du contrat de filmage.

Les exemplaires originaux dont la couverture en papier est imprimée sont filmés en commençant par le premier plat et en terminant soit par la dernière page qui comporte une empreinte d'impression ou d'illustration, soit par le second plat, selon le cas. Tous les autres exemplaires originaux sont filmés en commençant par la première page qui comporte une empreinte d'impression ou d'illustration et en terminant par la dernière page qui comporte une telle empreinte.

Un des symboles suivants apparaîtra sur la dernière image de chaque microfiche, selon le cas: le symbole \rightarrow signifie "A SUIVRE", le symbole ∇ signifie "FIN".

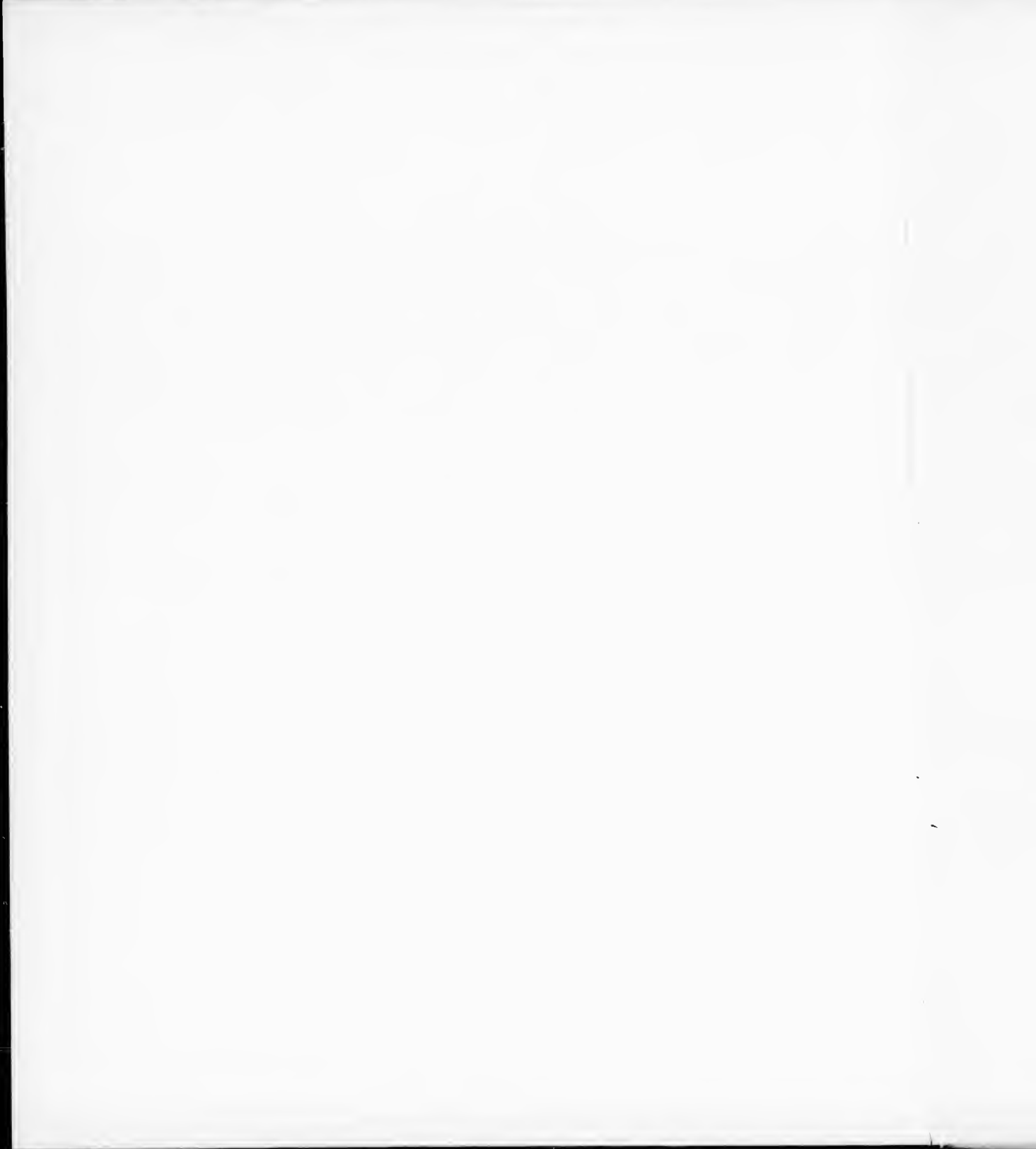
Les cartes, planches, tableaux, etc., peuvent être filmés à des taux de réduction différents. Lorsque le document est trop grand pour être reproduit en un seul cliché, il est filmé à partir de l'angle supérieur gauche, de gauche à droite, et de haut en bas, en prenant le nombre d'images nécessaire. Les diagrammes suivants illustrent la méthode.

errata
to

pelure,
on à



32X



STATISTICAL TABLES

OF THE

PROVINCE OF LOWER CANADA,

ACCOMPANYING THE TOPOGRAPHICAL MAPS THEREOF,

PUBLISHED PURSUANT TO AN ACT OF THE PROVINCIAL LEGISLATURE,

9 GEO. IV. CHAP. 68;

TO WHICH ARE ADDED

TABLES OF DISTANCES, TABLES OF THE LANDS GRANTED AND RESERVED IN THE
PROVINCE, AND ALSO OF THE LANDS UNGRANTED, WITH THE
SURVEYED TOWNSHIPS, &c. &c.

By JOSEPH BOUCHETTE, ESQ.,

SURVEYOR-GENERAL OF LOWER CANADA.

1230
(1)

LONDON:
PRINTED BY THOMAS DAVISON, WHITTLERS

W
p
a
T
p
l
m
f
a
t
p
i
s

P
s
e
i
n
n
5
A
t
a
h

CAP. LXVIII.

An Act to authorize the purchase of a certain number of copies of the Topographical Map and Statistical Tables to be published by Joseph Bouchette, Esq.

(14th March, 1829).

Most Gracious Sovereign,

Preamble.

Whereas Joseph Bouchette, Surveyor-General of Lower Canada, hath for a long time been employed in collecting materials for, and hath now ready for publication a Topographical Map of, and Statistical Tables relating to this province; and whereas it is expedient that he be encouraged in the publication of his said works; may it therefore please your majesty that it may be enacted, and be it enacted by the king's most excellent majesty, by and with the advice and consent of the legislative council and assembly of the province of Lower Canada, constituted and assembled by virtue of and under the authority of an act passed in the parliament of Great Britain, intituled, "An Act to repeal certain parts of an act passed in the fourteenth year of his majesty's reign, intituled, 'An Act for making more effectual provision for the government of the province of Quebec in the North America, and to make further provision for the government of the said province;'" And it is hereby enacted by the authority of the same, that when the said Topographical Map and Statistical Tables shall be published, it shall be lawful for the governor, lieutenant-governor, or person administering the government of the province, to subscribe for 100 copies thereof, to be afterwards distributed by an act of the provincial legislature, and by a warrant or warrants under his hand, to authorize the payment of such sum or sums as may be necessary to defray the expense of purchasing and importing the same, out of any unappropriated monies in the hands of the receiver-general of the province.

When the Topographical Map and Statistical Tables of the province published, governor may subscribe for 100 copies, and may defray the expense of purchasing and importing the same.

Price of the subscription not to exceed the selling price, and not to exceed 500 guineas.

Application of the monies to be accounted for to his majesty.

II. Provided always, and be it further enacted by the authority aforesaid, that the price of the subscription shall not exceed the selling price of the said map and tables, and shall not in the whole exceed the sum of 500 guineas.

III. And be it further enacted by the authority aforesaid, that the due application of the monies, which may be expended in carrying this act into execution, shall be accounted for to his majesty, his heirs, and successors, through the lords commissioners of his majesty's treasury, in such manner and form as his majesty, his heirs and successors shall be pleased to direct.

CAP. LXVIII.

Acte pour autoriser l'achat d'un certain nombre de copies de Cartes Topographiques et de Tables Statistiques qui doivent être publiées par Joseph Bouchette, Esq.

(14 Mars, 1829.)

Très Gracieux Souverain,

Préambule.

Vu que Joseph Bouchette, Arpenteur-Général du Bas Canada, a depuis longtemps été employé à rassembler des matériaux, et qu'il est maintenant prêt à publier une Carte Topographique et des Tables Statistiques qui ont rapport à cette province; et vu qu'il est convenable qu'il lui soit donné de l'encouragement dans la publication de ses ouvrages susdits; — Qu'il plaise donc à votre majesté qu'il puisse être statué, et qu'il soit statué par la très excellente majesté du roi, par et de l'avis et consentement du conseil législatif et de l'assemblée de la province du Bas Canada, constitués et assemblés en vertu et sous l'autorité d'un acte passé dans le parlement de la Grande Bretagne, intitulé, "Acte qui rappelle certaines parties d'un acte passé dans la quatorzième année du règne de sa majesté, intitulé, 'Acte qui pourvoit plus efficacement pour le gouvernement de la province de Québec, dans l'Amérique Septentrionale,' et qui pourvoit plus amplement pour le gouvernement de la dite province;" Et il est statué par la dite autorité, que dès que la Carte Topographique et les Tables Statistiques susdites auront été publiées, le gouverneur, le lieutenant-gouverneur, ou la personne ayant l'administration du gouvernement de la province pourra souscrire pour cent copies d'icelles, lesquelles seront ensuite distribuées par un acte de la législature provinciale; et par une ordonnance sous son seing, il pourra autoriser le payement de telle somme ou sommes qui seront nécessaires pour défrayer la dépense de l'achat et de l'importation d'icelles sur aucun des argens non affectés qui se trouveront entre les mains du receveur-général de la province.

Le gouverneur autorisé d'acheter et importer cent copies de la Carte Topographique et des Tables Statistiques de cette province.

II. Pourvu toujours, et qu'il soit de plus statué par l'autorité susdite, que le prix de la dite souscription n'excedera pas le prix de vente de la dite carte et des dites tables, et n'excedera pas en tout la somme de cinq cents guinées.

Le prix de la souscription n'excedera pas 500 guinées.

III. Et qu'il soit de plus statué par l'autorité susdite, qu'il sera rendu compte à sa majesté, ses héritiers, et successeurs, de l'emploi légal des argens qui seront dépensés en mettant cet acte à effet, par la voie des lords commissaires de la trésorerie de sa majesté, en telles manière et forme que sa majesté, ses héritiers et successeurs voudront bien l'ordonner.

Il sera rendu compte à la couronne de l'emploi des argens.

LOWER CANADA.

Statement of the New Subdivision of Lower Canada into Counties, showing their Geographical Position and Superficial Extent, and what proportion thereof consists of Seigniories, Fiefs, Townships, and Waste Lands respectively, also the comparative rank of each County, in Population, Territorial Extent, and Agricultural Produce, &c.

No.	COUNTIES.	Latitude of the centre of each county.	Longitude of the centre of each county.	Territorial extent. sq. miles.	Proportion thereof held out in Seigniories and Fiefs.		Waste Lands. sq. miles.	Rank of each County in		Members of Assembly sent by each County.	Places of Election.
					sq. miles.	Including the St. Regis part.		Population.	Agricultural Produce.		
1	Acadie . . .	45° 9' 0" N	73° 27' 0" W.	250	185	65	...	21st	35th	2	St. Marguerite de Blair-Fontaine.
2	Beauharnois . . .	45 10 0	74 5 0	717	325	392	...	13th	22nd	2	St. Clement.
3	Berthier . . .	46 2 0	73 9 0	8,410	451	120	7,839	4th	7th	2	Berthier.
4	Chambly . . .	45 28 30	73 17 30	211	211	16th	37th	2	Longueuil.
5	La Chenaye . . .	45 43 0	73 30 0	289	216	83	...	12th	27th	2	St. Roch.
6	La Prairie . . .	45 19 36	73 36 30	238	238	7th	36th	2	St. Constant.
7	L'Assomption, vacant tract in rear of do. and co. of La Chenaye . . .	45 47 0	73 23 0	206	108	100	...	24th	33rd	2	St. Pierre de L'Assomption.
8	Missisquoi . . .	45 6 30	72 43 15	4,800	4,800	30th	30th	2	Vs. of Dunham & Freigeleisburg.
9	Montreal . . .	45 31 0	73 40 0	197	197	1st	38th	6	St. Laurent.
10	Ottawa . . .	47 54 0	80 6 10	31,669	220	868	30,581	38th	2nd	1	Hull.
11	Richelieu . . .	45 34 30	74 47 30	373	373	5th	29th	3	St. Ours.
12	Rouville . . .	45 50 15	72 58 0	499	429	9th	28th	2	Ste. Marie de Monnoir.
13	St. Hyacinthe . . .	45 18 30	73 15 0	477	477	17th	25th	2	St. Hyacinthe.
14	Shefford . . .	45 22 18	72 32 0	749	...	749	...	34th	17th	1	Frost Village T. of Shefford.
15	Stanstead . . .	45 9 0	72 4 0	632	632	27th	23rd	2	Copp's Ferry and V. of Charleston.
16	Terrebonne, including Isle Jesus . . .	45 39 20	73 20 0	3,169	205	114	2,850	6th	12th	2	T. of Hatley, St. Rose and Ste. Anne des Plaines
17	Two Mountains, including I. Bizard . . .	45 31 0	74 21 30	1,086	302	341	443	3rd	18th	2	St. Andre and St. Eustache.
18	Vaudreuil, including Perrot . . .	45 21 15	74 16 0	330	288	22	...	14th	32nd	2	Vaudreuil and Cedres.
19	Vercheres . . .	45 42 30	73 16 0	198	198	19th	39th	2	Vercheres.
Total . . .				54,802	4,515	3,774	46,513	1st	2nd	41	

DISTRICT OF MONTREAL.

1	Bence	46	70 35	1,987	509	411	1,037	23rd	15th	2	Grande Ligne.
2	Bellechasse	46 27	70 25	1,775	278	295	1,202	11th	24th	2	St. Valier and St. Charles.
3	Dorchester	46 38	71 11 20	249	248

TERRITORIAL STATEMENT.

19 Vercheres . . .	45 21 15	74 16 0	330	288	22	...	19th	39th	2nd	2
cluding Isle Perrot . . .	45 42 30	73 16 0	198	198	1st	2nd	1st	41
Total	54,802	4,515	3,774	46,513	1st	2nd	1st	41

DISTRICT OF QUEBEC.											
	46	70 35	1,987	509	411	1,037	23rd	15th	23rd	2	
	46 27	70 25	1,775	278	295	1,202	31st	24th	31st	2	
1 Bellechasse . . .	46 38	71 11 30	348	348	..	2,698	22nd	31st	25th	2	Grande Ligne.
2 Dorchester . . .	46 40 30	69 52	3,044	259	..	2,698	18th	13th	15th	2	St. Valer and St. Germain.
3 Islet . . .	47 3	69 12	4,320	247	182	3,891	15th	9th	11th	2	R. Etchemin and St. Nicolas.
4 Kamouraska . . .	46 28	71 37 30	735	735	..	1,137	29th	21st	29th	2	Islet.
5 Lotbinière . . .	46 5 30	71 12 5	1,465	328	40th	19th	39th	1	Kamouraska.
6 Megantic . . .	On the St. Lawrence.		7,396	576	..	6,820	36th	8th	36th	2	St. Croix.
7 Montmorenci . . .	47 10	70 53 10	69	69	35th	40th	35th	1	Leeds.
8 Orleans . . .	46 56	70 57 30	8,640	572	..	8,068	8th	5th	12th	2	St. Anne.
9 Portneuf . . .	46 41	71 47 0w.	14,240	246	214	13,780	2nd	3rd	7th	6	St. Jean.
10 Quebec . . .	46 46 30	71 18	8,840	1,073	213	7,554	28th	6th	34th	2	Des-Chambault & St. Augustin.
11 Rimouski . . .	Cap Abatis	Wn. Exty.	72,700	535	42	72,123	Rank of the District.	1st	33rd	2	Charlesbourg.
12 Saguenay, including Isle aux Coudres & Anticosti	47 12 30	70 24 30	2,390	2,390	Rank of the District.	1st	33rd	2	Rimouski and Isle Verte.
Totals	127,949	7,815	1,882	118,220	2nd	1st	2nd	28	Bay St. Paul and Murray Bay.
D. OF THREE RIVERS.											
1 Champlain . . .	On the St. Lawrence.		783	633	150	..	31st	20th	27th	2	Ferry N. R. St. Lawrence and Batiscan River.
2 Drummond . . .	46 28 0	72 0 0	1,674	..	1,604	..	39th	16th	37th	1	Drummondville.
3 Nicolet . . .	46 20 0	72 17 30	487	275	212	..	20th	26th	21st	2	Gentilly and St. Gregoire.
4 St. Maurice . . .	On Lake St. Peter.		9,810	244	180	9,386	10th	4th	14th	4	Yamachiche.
5 Sherbrooke . . .	46 17 30	72 42 30	2,786	..	2,080	706	32nd	14th	17th	2	Sherbrooke and Richmond.
6 Yamaska . . .	45 30 15	71 35 15	283	283	25th	34th	30th	2	Vil. St. Francois.
Totals	15,823	1,435	4,226	10,162	3rd	3rd	3rd	13	
D. OF GASPE.											
1 Bonaventure . . .	On River	Restigouche	4,108	33rd	10th	38th	1	Richmond & Hope Point Peter.
2 Gaspé . . .	48 2 25	66 34 0	3,188	37th	11th	40th	1	
3 Magdalen Islds.	93	..	93	..	Rank of the District.	4th	4th	2	
Totals	7,389	4th	4th	4th	2	
Grand Totals	205,863

This inferior district is composed of 38 townships and a part of Bolton; it comprehends the whole of the county of Sherbrooke, and a part of the county of Drummond, in the District of Three Rivers, and all Stanstead, except a part of Bolton, in the District of Montreal, covering the greater part of the above named superior districts, and is included in the General Tables and in the Statistical Tables; its superficies and produce, &c. are comprised within, and form part of the above-named Superior Districts.

1827, and
ch, 1829,
Administrator

subsequently reorganized to meet the New Civil Division and Subdivision thereof, into Districts and which received his Majesty's assent the 17th of August following, promulgated by the proclamation of the Government, on the 5th October, 1829.

Foundries.	Tanneries.	Hat Manufactories.	Potteries.	Potash Factories.	Peatlash Factories.	Justices of the Peace.	Medical Men.	Notaries.	Shopkeepers.	Taverns.	Artisans.	Shipyards.	River Craft.	Tonnage.	Keel Boats.	REMARKS.
...	2	...	2	3	3				5	4	35	2	Comprehends Isle aux Noix, a military post, and fortifications, also the site and remains of the American fort at House's Point.
...	1	14	11				11	10	63	Comprehends the Indian village of St. Regis, 721 souls, of which 369 were within the state of New York, by the old line, but are now comprised within the limits of the province by the new one, latitude 45° north.
...	1	1	1	5	5				25	22	158	...	2	36	5	Extensive village, population 450 souls.
...	2				22	25	190	2	4	21	5	Comprehends the fort and village of Chambly and town of Drochester, a port of entry. The American steam-boats ply between this place and Whitahall, Burlington, and Platsburgh, United States.
...	2	...	2	4	3				17	22	75	1	Comprehends the noted village of that name; two steam-boats ply between this place and Montreal.
...	2	1	1	15	7				13	21	54	3	Several wind-mills.
...	2	1	2	7	7				23	15	90	
...	4	...	7	3	2				240	233	1,395	5	9	350	15	Comprehends the city of Montreal and fortified island of St. Helens. The population of the city is 20,000 souls; it is the last sea-port town on the St. Lawrence; comprehends also the La Chine Canal.
...	2	7	3				6	7	60	Comprehends the Union Bridge across the Ottawa at Hull and By-Town.
...	2	2	13	3	2				27	22	58	...	3	50	4	Includes the town of William Henry, situated at the entrance of the Richelieu, or Sorel River; population 2,000 souls. There are in this county a number of wind-mills.
...	3	2	2	7	7				16	20	104	...	1	15	1	Comprehends the conspicuous mountains of Itouville and Mount Johnson.
...	1	3	3				11	15	59	Includes the noted village of that name, and mountains Yamaska and Itougement.
...	1	3	1	7	6				6	6	36	
...	3	1	3	23	21				17	13	80	Comprehends the handsome village of that name near the province line.
...	4	5	4				22	23	101	1	Includes the large village of that name; population 800 souls.
...	3	1	2	18	11				21	34	232	Comprehends the Grenville Military Canal and the Indian village of the Lake of the Two Mountains. Several boats ply on the Ottawa, between Hull, By-Town, and Grenville.
...	6	23	9				20	20	93	Comprehends the military canal at the Cascades, several locks above, also the locks and port of entry at Coteau du Lac.
...	7				15	11	93	1	1	18	1	Has about twenty windmills.
4	246	838		148	106	69	178	96	540	541	2,916	10	20	490	36	
...	2	...	2	4	2				14	11	99	Port of entry at St. Mary's.
...	3				23	21	130	2	4	66	9	The greater number of the mills in this county stop working in the summer, owing to a deficiency of water. This observation applies to several parts of the south side of the St. Lawrence.
...				12	13	87	5	5	83	11	Comprehends the town of Aubigny, opposite to Quebec.
...	2				37	25	107	2	12	193	30	Eight wind-mills.
...	1	...	1				11	12	95	3	14	377	21	Village of Kamouaska, noted for sea-bathing.
...				6	6	86	...	11	200	13	
...				2	1	5	...	2	27	2	
...				5	4	30	...	5	69	7	The priests, farm, and establishment at St. Joseph, calculated for the reception of the seminary of Quebec students, during the summer vacations.
...				9	8	47	2	2	28	13	The spot, or ship-yard, in the parish of St. Laurent, where the two large timber ships, the Columbus and the Baron of Henfrey, were built and launched.
2				27	25	147	4	16	504	5	The Hochelieu Rapid, opposite to the church of Deschambault.
...				216	176	1,250	7	40	2,020	66	The capital of Lower Canada, chief sea-port, and fortified town; contains a population of 28,000 souls, including the Banlieue. Residence of the governor-general. Steam-boats ply from this place to Montreal; there are two steam-boats and several team-boats plying across the river to Point Levy.
...				9	5	87	3	9	313	41	Comprehends Temiscouata portage, the route to New Brunswick, Green Island and Light-house, and the Island of Die. This county is the chief residence of pilots.
...				11	15	59	2	21	690	59	Comprehends the Saguenay River and the conspicuous, high, and diversified country of Bay St. Paul and Murray Bay, and the villages of that name. Light-house at Point des Monts.
4	11	1	5	6	2	57	171	60	382	322	2,229	30	141	4,570	277	

Districts.	No.	Counties.	Population.	Church				Church of Rome.					Total Number of Houses in Towns & Villages.	Court Houses.	Gaols.	Schools.	Mills.																
				England.	Scotland.	Parsonage Houses.	Wesleyan Chapels.	Churches.	Curts.	Presbyteries.	Convents.	Colleges.					Towns.	Villages.	Corn.	Saw.	Carding.	Fulling.	Paper.	Distilleries.	Breweries.	Foundries.	Tanneries.	Hat Manufactories.	Potteries.				
Three Rivers.	1	Champlain	7,350	5	4	5	2	70	...	3	4	9	6
	2	Drummond	1,907	1	...	1	...	1	1	25	...	2	4	7	1	1	4	
	3	Nicolet	12,693	1	5	5	5	...	1	2	89	6	5	1	1	1	
	4	St. Maurice	15,388	2	6	5	5	1	1	6	627	1	1	6	11	17	4	4	...	1	1	2	4	
	5	Sherbrooke	5,471	5	...	2	...	1	...	3	3	110	1	1	9	16	30	4	4	...	2	2	
	6	Yamaska	8,847	3	3	3	1	36	...	3	3	4
6	Totals	51,657	9	3	21	17	19	1	1	1	15	957	2	2	23	44	72	10	10	1	3	1	2	17	3		
Gaspé.	1	Bonaventure	5,160	2	10	1	138	1	1	1	1	2	
	2	Gaspé	2,617	2	9	1	60	1	1	1	5	3	
	2	Totals	7,777	4	19	2	3	198	2	2	2	6	5	
40	Grand totals	471,876	39	411	5	191	144	154	20	10	6	114	14,775	7	8	273	324	565	91	79	3	31	19	474	9	46		

The District of St. François comprehends the whole of the county of Sherbrooke, and a great part of the counties of Stanstead and in the statements of

OBSERVATIONS.

- 1st. The columns which have chiefly occupied our attention and time, as being a most important branch of the statistics of the province, are those of population, the clergy establishments, corn and saw-mills, factories and villages. The other columns are calculated partly from personal knowledge and partly from various sources of information that may be depended upon, and may be fairly considered as giving a correct general *aperçu* of the number of river craft, boats, artisans, &c. in the province.
- 2nd. Of the 39 protestant churches enumerated not above 25 are attached to parishes. The parishes that may hereafter be attached to the remainder are not at present laid out or defined.
- 3rd. Of the 191 Roman Catholic churches 4 are missionary churches; to which may be added 7 presbyteries used as chapels in as many parishes, and making up the complement of parishes in the province equal to 196, besides a few other projected parishes within the seigniories, and the site of churches fixed upon.
- 4th. Of the 20 convents, 6 only are extensive nunnery establishments in the towns. The remaining 14 are dispersed over the province for the education of females, and are generally governed by 2 or 3 nuns of the congregation.
- 5th. In the 10 enumerated colleges are comprised the extensive seminaries of Quebec, Montreal, Nicolet, M^cGill college, St. Hyacinthe, Chambly, and Ste. Anne's in the county of Kamouraska.
- 6th. With the exception of 3 breweries and 1 distillery in Quebec, 4 breweries and 1 distillery in Montreal, and a brewery at La Prairie, the others are minor establishments. The distilleries are chiefly for whiskey, and are most frequent in the townships.
- 7th. The number of ship yards will not appear surprising, when it is recollected that 39,900 tons of shipping were built in 1827.
- 8th. About 65 of the enumerated river craft navigate between Quebec and Montreal, 59 between Matane and Quebec, and about 113 are employed in the St. Lawrence and Gulf fisheries. Of the keel-boats, about 713 may be employed in the fisheries of the river and gulf; 150 are pilot boats. The number of flat boats, batteau and canoes, is not estimated, but it is known to be considerable.
- 9th. Exclusive of the pot and pearlsh factories enumerated, many of the inhabitants of the townships keep potash kettles for making salts: their number may average 150.
- 10th. With few exceptions, the Roman catholic parish churches are built of stone, averaging in length from 100 to 140 feet by 50 to 60 feet in breadth. The roofs are generally covered with tin, and surmounted by spires, many of them 2 and several 3. The new cathedral church of Montreal measures 255 feet in length by 134 in width within the walls. Its estimated cost exceeds 96,000. The presbyteries are chiefly stone, and generally large and commodious. Two chapels, called Chapelles du Reposoir, are frequently appendages to the churches in the country. About one half of them are built of stone. Their total number exceeds 300.
- 11th. Of the number of schools enumerated, 74 are supported under the act of the 41st Geo. III., and 50 are parish schools under the superintendance of the *enrés*.
- 12th. Branch pilots for and below the harbour of Quebec, 126. Branch pilots for and above the harbour of Quebec, 39.

Potash Factories.	Pearlash Factories.
1	1
4	4
...	...
3	3
11	11
...	...
19	19
...	...
...	...
173	127

Drummond the superi

Populat
Magdal
Number
Voyage

Average
years 182
Natural

Exclusi

Potash Factories.	Pearlash Factories.	Justice of the Peace.	Medical Men.	Notaries.	Shopkeepers.	Taverns.	Artisans.	Shipyards.	River Craft.	Tonnage.	Keel Boats.	REMARKS.
1	1				5	9	45	1	5	73	6	
4	4				2	2	10					
					8	6	90		1	15	1	
					40	30	119	3	6	203	7	Comprehends the Old and New College of Nicolet.
3	3				9	9	83					Comprehends the town of Three Rivers; population 3500 souls, also the forges of St. Maurice. Steam-boats, plying on the St. Lawrence, stop at this place.
11	11				2	5	54					Comprehends the village of Sherbrooke, the district town of St. Francis.
												Indian village of St. Francis.
19	19	17	80	11	66	61	401	4	12	291	14	
					19	5	34	3	49	3,675	297	Both these counties are noted for the fisheries.
					9	6	7	4	15	1,125	441	The Magdalen Island is annexed to the county of Gaspé.
		2	32	1	28	11	41	7	64	4,800	738	
173	127	145	461	168	1,016	935	5,587	51	237	10,151	1,065	This column of grand totals is calculated up to December, 1827.

Drummond, containing in all 39 townships, and a part of the township of Bolton. The statistics of this district are comprised the superior districts.

RECAPITULATION OF POPULATION, &c.

Population of the province, as stated above	471,876
Magdalen Islands	900
Number of men employed in the king's posts and Mingan within the province	400
Voyageurs employed in the Indian trade, sometimes sojourning in the Indian countries	300
	473,476
Average number of emigrants remaining in the province, out of the total emigration to the Canadas in the years 1827, 1828, 1829, 1830, and 1831	28,000
Natural increase, since 1827, about	59,575
Grand Total	561,051

Exclusive of the military forces of the country and the aborigines wandering in the interior.

Statement of Steam and Team-boats plying on the St. Lawrence, in Lower Canada, 1829.

Between Quebec and Montreal.										
Number.	Names.	Tonnage.	Horse-Power.	Rate of Freight-Per Ton.		Cabin-Passage.		Stowage or Deck Passengers.	Remarks.	
				Up.	Down	Up.	Down			
				s.	s. d.	£ s.	£ s.			
1*	The John Molson	500	120	10	7 6	1 10	1 5	10	The boats marked thus * belong to the St. Lawrence Steam-boat Company. Belongs to John M'Kenzie and others of Montreal. Hon. Matthew Bell and others. To a company at Montreal. To George Grafield and others.	
2*	— Quebec . .	500	60		
3*	— New Swifsure	300	65		
4*	— Chambly . .	400	60		
5	— Laprairie . .	100	30		
6*	— Waterloo . .	130	45		
7	— Richelieu . .	350	45		
8	— Hercules . .	600	100		
9*	— St. Lawrence	350	65		
10	— LadyoftheLake	70	28		
Ferry Steam-boats plying between Montreal, Longueuil, and Laprairie.										
1	— Edmond Henry	90	45						To Edmond Henry, Esq. & others.	
2	— Montreal . .	90	45						To M. Raymond, Esq. Laprairie.	
Team Boats.										
1	— Edmond . .	20	10							
2	— Longueuil							
Ferry Steam-boats plying between Quebec and Point Levi.										
1	— Lauzon	30			4d. across.			To Mr. James M'Kenzie, Point Levi.	
Team Boats.										
1	10			3d. across.			Belonging to farmers at Point Levi.	
2	8							
<p>Total, 16 steam-boats, and 4 team-boats, plying on the St. Lawrence. — 60 river craft navigating between Quebec and Montreal, of 25 to 100 tons burthen Rate of freight, per ton, 7s. 6d. Square-rigged vessels on the stocks at Montreal 2 Do. do. do. at Quebec 9 Small craft 2</p> <p style="text-align: right;">Total, <u>11 2</u></p>										
<p>There are also 2 steam-boats on the Ottawa river plying between Grenville and Hull, 1 between La Chine and Point Fortune, and 1 between La Chine and the Cascades.</p>										

Aberc
Acton
Acton
Armag
Arthab
Ascot
Ascot
Ascot
Ascot
Ashfor
Aston
Aston
Aston
Aston
Auckla
Barford
Barnsto
Barnsto
Barnsto
Barnsto
Barnsto
Blandf
Bolton
Brando
Brando
Brando
Brome
Brompt
Brompt
Brough
Brough
Brough
Buckin
Buckin
Buckin
Buckl
Bulstro
Bury
Chath
Chath
Chath
Chath

General Statement of the Lands granted in Free and Common Soccage in the Province of Lower Canada, within the undermentioned Townships, which have been laid out and subdivided since the year 1795, showing also the proportional Reservations for Crown and Clergy from the 26th March, 1814.

TOWNSHIPS.	By whom granted.	Leaders of Townships.	Date of the Patent.	Number of Acres granted.	Reservations for Crown.	Reservations for Clergy.
Abereromby		Settlers		406	80	80
Acton		Mr. Robitaille		1,000	200	200
Acton	Hon. T. Dunn	George Walters Allsopp	July 22, 1806	24,004		
Acton	Hon. T. Dunn, President	Gother Mann, &c. &c.	Ditto	22,859	4,800	4,842
Armagh	General Prescott	Thompson and Blais	July 13, 1799	2,400	410	630
Arthabaska	Sir R. S. Milnes	John Gregory	September 30, 1802	11,550	2,730	2,100
Ascot	Ditto	Settlers		5,879	1,160	1,170
Ascot	Ditto	Thomas Scott	April 21, 1803	20,188	4,200	4,200
Ascot	General Prescott	James Bangs	March 26, 1814	200		
Ascot	Lord Dalhousie (chiefly)	W. B. Felton and others	1816 to 1824 and 1826	16,440	3,300	3,250
Ashford	Sir George Prevost		1814 to	1,200	250	250
Aston	Hon. T. Dunn	Sundry persons	February 17, 1806	27,127	5,454	4,847
Aston Augmentation						
Aston	Hon. T. Dunn	John Nelson	June 27, 1806	1,260		
Aston Augmentation		A. G. Douglas			800	160
Auekland	Hon. T. Dunn	{ Foleury Deschambault }	April 3, 1806	23,100	4,400	4,400
Barford	Sir R. S. Milnes	{ and others }				
Barnston	Ditto	J. W. Clarke, Esquire	April 15, 1802	27,720	5,880	5,670
Barnston	Ditto	Lester and Morrough	April 11, 1801	23,100	4,735	4,693
Barnston	Sir. J. H. Craig	Sundry persons	January 7, 1805	2,310	152	152
Barnston	Ditto	Ditto	March 12, 1810	13,546	58,512	58,512
Barnston	Lord Dalhousie	William Somerville	June 18, 1811	3,200		
Blandford	Ditto	Braudie	November 28, 1821	600	120	120
Bolton	General Prescott	Sundry persons		37,400	7,664	7,200
Brandon	Lord Dalhousie	Nicholas Anstin	Ditto, 1797	62,621	12,190	12,400
Brandon	Ditto	Edmund Antrobus	February, 1826	9,700	1,900	1,900
Brandon		Hon. James Cuthbert	March, 1828	1,200	240	240
Brome	General Prescott	Sundry persons		9,404	1,890	1,890
Brompton	Sir R. S. Milnes	Asa Porter, Esquire	August 18, 1797	46,200	9,030	9,030
Brompton		William Barnard	November 27, 1803	40,753	7,800	8,000
Broughton	Ditto	Settlers		272	54	52
Broughton	Sir R. S. Milnes	Sundry persons		700	140	140
Broughton	Lord Dalhousie	H. Jenkin and Wm. Hall	October 20, 1800	23,100	5,140	5,340
Buckingham		J. Adams & J. W. Woolsey	Mar. 1822 to Aug. 1824	1,800	360	360
Buckingham	Sir R. S. Milnes	Sundry persons		2,400	480	480
Buckingham	Ditto	Captain Robertson	November 27, 1799	2000	420	420
Buckland	Hon. T. Dunn	Fortne and Hawley	January 22, 1803	14,910	3,570	3,360
Bulstrode	Sir R. S. Milnes	Sundry persons	November 26, 1806	12,182	2,433	2,367
Bury	Ditto	Patrick Langan	May 27, 1803	24,463	4,894	4,894
Chatham		Calvin May	March 15, 1803	11,550	2,310	2,310
Chatham	General Prescott	Sundry persons		8,200	1,640	1,640
Chatham		P. L. Panet & Wm. Fortune	March 15, 1790	2,200	410	410
Chatham	Hon. T. Dunn	{ Col. Dl. Robertson and }	December 31, 1806	5,250	800	800
Chatham	General Prescott	{ Dr. S. Fraser }				
		Sundry persons	January 10, 1812	13,319		

TOWNSHIPS.	By whom granted.	Leaders of Townships.	Date of the Patent.	Number of Acres granted.	Reservations for Crown.	Reservations for Clergy.
Chester		Sundry persons	July 17, 1802	2,527	500	500
Chester	Sir R. S. Milnes	Simon M ^c Tavish, Esquire	April 11, 1805	11,550	2,310	2,310
Chester	Ditto	Sundry persons	1817 to 1823	3,000	600	600
Chester		Francis Baby and others		800	160	160
Chester	Lord Dalhousie	John Lane	to 1823	248	210	210
Clarendon		Sundry persons	June 13, 1799	12,600	2,520	2,520
Clifton	General Prescott	David Steward	March 5, 1803	23,546	4,914	5,064
Clifton	Sir R. S. Milnes	Sundry persons	July 23, 1803	7,035	1,594	1,680
Clifton	Ditto	Mary Barnet	to 1816	600	120	120
Clifton	Sir John Sherbrooke	Jane Moriarty	May 24, 1803	11,550	2,510	2,100
Clinton	Sir R. S. Milnes	J. F. Holland	August 31, 1803	26,460	5,250	5,250
Compton	Ditto	Jesse Pennoyer		13,110		
Compton	Sir J. H. Craig	Ditto	March 12, 1810	11,550	2,310	2,310
Ditton	Sir R. S. Milnes	M. H. Ycomans	May 13, 1803	53,000	10,710	10,710
Dorset	Ditto	John Black	December 30, 1799	500	100	100
Dudswell		Sundry persons	May 13, 1803	11,632	2,247	2,483
Dudswell	Ditto	John Bishop	to 1822	3,000	600	600
Dudswell		Sundry officers	to 1827	800	160	160
Dudswell	Lord Dalhousie	Lawrence Castle		200	40	40
Dunham		Sundry persons	February 2, 1796	40,895	8,400	8,400
Dunham	Lord Dorchester	Thomas Dunn, Esquire		360	72	72
Durham		Sundry persons	August 30, 1802	21,991	4,410	4,410
Durham	Sir R. S. Milnes	Thomas Scott	June 26, 1803	8,150	1,620	1,365
Durham	Ditto	St. François Indians	January 11, 1814			
Durham	General Prescott	Don. M ^c Lean and family	1814	12,726	2,400	2,600
Durham	Hon. T. Dunn	Mrs. Widow Davidson	1827	500	100	100
Durham	Lord Dalhousie	J. L. Ployart	1827	200	40	40
Durham	Ditto	George Alexander	1828	200	40	40
Durham	Ditto	John Gass		1,500	300	300
Durham	Ditto	John M ^c Laine and family		5,250	1,390	1,275
Eardley	Hon. T. Dunn	Sundry persons	August 22, 1806	1,300	260	260
Eaton		Ditto	December 4, 1800	25,620	5,250	4,620
Eaton	Sir R. S. Milnes	Josia Sawyer	March 1, 1804	6,300	1,680	1,890
Eaton	Ditto	Isaac Ogden	December 17, 1812	200		
Eaton	General Prescott	Joseph Cumming	1815	3,400	600	600
Eaton	Hon. T. Dunn	Carnil and others	November 13, 1802	11,550	2,310	2,310
Ely	Sir R. S. Milnes	Amos Lay, Junior	January 21, 1811	630		
Ely	Sir J. H. Craig	Doceas Higgins	1814	11,000	2,200	2,200
Ely	Sir G. Prevost	J. W. Clarke	1816	4,200	800	800
Ely	Sir G. Gordon	Sundry persons	October 22, 1798	23,000	4,830	4,830
Farnham	General Prescott	Samuel Gale, &c.	September 9, 1805	5,040	600	802
Farnham	Hon. T. Dunn	Jane Cuyler, &c.	February 11, 1800	10,176		
Farnham	Sir J. H. Craig	John Allsopp, &c. &c.	1824	2,400	480	480
Farnham	Lord Dalhousie	Sundry persons		5,100	1,000	1,020
Frampton	Sir James Kempt	Ditto	July 10, 1806	11,569	2,212	2,200
Frampton	Hon. T. Dunn	P. E. Desbarat, &c. &c.	September 9, 1808	12,380		
Frampton	Sir J. H. Craig	Sundry grantees	1821 to 1826	6,900	1,340	1,340
Frampton	Lord Dalhousie	Royal Institution	December 7, 1827	100	20	20
Frampton	Ditto	J. T. Wilson and others, } 18 grantees	Sept. 1827	2,400	480	480
Frampton	Ditto	Thos. Mercer and others } by agent Wm. Henderson, 26 grantees	Jan. 1828	3,700	737	737
District of Gaspé	Sir James Kempt	Robin and Co.		2,118		
Godmanchester	Ditto	Sundry persons	May 10, 1812	4,270	850	854
Godmanchester	Sir J. H. Craig	Robert Ellice, &c. &c.	January 4, 1814	25,592		
Godmanchester	General Prescott	John M ^c Kindlay and others	1814 to 1815	5,650	800	800
Godmanchester	Hon. T. Dunn	Sundry persons	1825	2,000	400	400
Godmanchester	Lord Dalhousie	P. Boucherville			Acton	Acton
Godmanchester	Ditto	Peter Lukin	1827	550	160	160

LANDS GRANTED.

Reservations for Clergy.	Reservations for Crown.	Reservations for Clergy.	TOWNSHIPS.	By whom granted.	Leaders of Townships.	Date of the Patent.	Number of Acres granted.	Acton	Acton
500	500		Godmanchester	Lord Dalhousie	De Rouville and Desslubere	April, 1827	1,445	289	289
2,310	2,310		Godmanchester	Ditto	{ Royal Institution, 2 vil- lage lots of 1/4 an acre each }	1827			
600	600		Granby		Sundry persons		2,400	480	480
160	160		Granby	Sir R. S. Milnes	{ Officers & privates, Bri- tish militia }	January 8, 1803	38,152	7,908	7,977
2,520	2,520		Granby, Milton, & Simpson	Hon. T. Dunn	Sundry persons	July 29, 1806	2,520		
4,914	5,064		Granby	Ditto	Jn. Margaret Isab. Simpson	July 3, 1806	420		
1,594	1,680		Granby	Lord Dalhousie	Peter Sheppard	1827	500	100	100
120	120		Granby	Ditto	Frost and Gridds	June, 1827	700	140	140
2,510	2,100		Grantham		Lieutenant-Colonel Heriot		600	120	120
5,250	5,250		Grantham	Sir R. S. Milnes	William Grant	May 14, 1800	27,000	5,250	5,250
2,310	2,310		Grantham	{ There are 26 lots given in Roxtan as equivalents to the crown reserves }	{ Hon. John Richardson & Josias Wastell }	1815	{ 30,200 granted or occupied }	{ Crown re- serves in- cluded in quantity granted }	{ 5200 }
10,710	10,710		Grenville	Lord Dalhousie	Sundry persons		2,250	420	420
100	100		Grenville	Sir J. H. Craig	Ditto	January 28, 1808	1,260	211	400
2,247	2,483		Grenville	Ditto	Archibald Campbell	December 12, 1810	616		
600	600		Grenville		Sundry persons	1814 to 1826	7,809	1,560	1,560
160	160		Grenville Augmentation	Lord Dalhousie	Archibald Campbell	August, 1823	600	120	120
40	40		Halifax	Sir R. S. Milnes	Benjamin Jobert	August 7, 1802	11,550	2,310	2,310
8,400	8,400		Halifax	Ditto	Matthew Scott	June 25, 1805	11,243	2,310	2,320
72	72		Halifax	Lord Dalhousie	Captain Dickon	1821	800	160	160
4,410	4,410		Halifax	Ditto	Pascal de la Terriere	1828	800	160	160
1,620	1,365		Ham	Sir J. H. Craig	Partial grant	February 6, 1808	1,260	200	200
2,400	2,600		Ham	General Prescott	Martha Mitchell	December 31, 1811	1,200		
100	100		Hamilton	Lord Dalhousie	Sundry persons	March 1824	14,800	3,000	3,000
40	40		Hatley		Ditto		6,502	1,300	1,300
300	300		Hatley	Sir R. S. Milnes	Henry Cull	March 25, 1803	23,493	4,890	4,910
1,390	1,275		Hatley	Ditto	Moses Holt's family	February 21, 1805	2,304	374	384
260	260		Hatley		W. B. Felton and others	1817 to 1825	4,375	915	915
5,250	4,620		Hatley	Lord Dalhousie	P. and E. Remieh	November, 1826	200	40	40
1,680	1,890		Hemmingford		Settlers		300	60	60
600	600		Hemmingford	General Prescott	Robert Gordon	March 18, 1700	20,800	4,160	4,160
2,310	2,310		Hemmingford	Sir R. S. Milnes	Sundry persons	June 17, 1803	8,536	1,707	1,707
2,200	2,200		Hemmingford	Ditto	Matthew Scott	December 24, 1804	2,520	504	504
800	800		Hemmingford	Ditto	Dn. M'Naught	March 27, 1804	420	84	84
4,830	4,830		Hemmerford	Hon. T. Dunn	Stephen Sewell	September 18, 1811	3,200		
600	802		Hinchinbrook	General Prescott	John Graves and others	March 16, 1814			
480	480		Hinchinbrook	Ditto	Lieut.-Col. Sir R. Williams		1,200	140	240
1,000	1,020		Hinchinbrook	General Prescott	Sundry persons		6,961	1,355	1,355
2,212	2,200		Hinchinbrook	Sir Geo. Prevost	Gilbert Miller	January 3, 1799	5,200	1,040	1,040
1,340	1,340		Hinchinbrook		Lieut. Col. R. Ellice, &c.	December 30, 1811	3,719		
20	20		Hinchinbrook	Lord Dalhousie	Sundry persons	1814 to 1815	15,464	2,200	2,202
480	480		Hinchinbrook	Ditto	M. and S. Stevenson	August, 1827	{ 44 2 village lots, 22 acres each }	Ham 4 1/2	4 1/2
737	737		Hinchinbrook	Ditto	John Campbell	August, 1827	600	120	20
800	800		Hinchinbrook	Ditto	Thos. M'Leary Gardiner	1827	200	Ham 40	Ham 40
400	400		Hinchinbrook	Ditto	{ Sundry persons by agent William Bowron }	July, 1827	8,509	1,700	1,700
850	854		Hull	Hon. T. Dunn	Philemon Wright	January 3, 1806	13,701	2,482	2,243
800	800		Hull	Ditto	Robert Randall	September 21, 1807	630		
800	800		Hull	Lord Dalhousie	P. Wright, Esq. and others	1823 to 1827	18,333	5,800	3,756
800	800		Hunterstown	Sir R. S. Milnes	John Jones	April 29, 1800	24,620	4,600	4,600
400	400		Inverness		Sundry persons		3,340	670	670
400	400		Inverness	Sir R. S. Milnes	William M'Gillivray	August 9, 1802	11,550	2,310	2,310
400	400		Inverness	Sir J. H. Craig	Robert Skinner	June 18, 1811	600		
100	100		Inverness	Lord Dalhousie	Sundry persons	1822 to 1826	1,940	388	388
100	100		Ireland	Sir James Kempt	Ditto		5,800	1,140	1,140

TOWNSHIPS.	By whom granted.	Leaders of Townships.	Date of the Patent.	Number of Acres granted.	Reservations for Crown.	Reservations for Clergy.
Ireland	Sir R. S. Milnes	Joseph Frobisher	August 20, 1801	11,550	2,310	2,310
Ireland		Sundry persons	1822 to 1826	4,190	840	840
Ireland	Lord Dalhousie	Pentland	1827	200	40	40
Ixworth	Sir R. S. Milnes	Matthew O'Mara	November 22, 1802	1,260	210	420
Ixworth		Sundry persons	1815	6,300	1,200	1,300
Jersey	Sir James Kempt	Honourable C. Bowen		5,508	1,109	1,138
Kildare	Ditto	Sundry persons		3,840	768	770
Kildare	Sir R. S. Milnes	P. M. De La Valtrie	June 24, 1803	11,486	1,900	2,520
Kildare		Sundry persons	1822 to 1826	9,110	1,822	1,822
Kildare	Lord Dalhousie	John Heather	January, 1827	200	40	40
Kilkenny		Purte and Joseph Clement	February 19, 1826	1,600	320	320
Kingsey	Sir James Kempt	Sundry persons		200	40	40
Kingsey	Sir R. S. Milnes	George Longmore	June 7, 1803	11,478	2,448	2,422
Kingsey	Ditto	Major Holland's family, &c.	January 28, 1805	11,198	2,132	1,998
Kingsey	Sir J. H. Craig	Edward Baynes	June 18, 1811	600		
Kingsey	General Prescott	Donald M'Lean and family	January 11, 1814			
Kingsey		Sundry persons	1823 to 1826	5,400	1,080	1,080
Kingsey	Lord Dalhousie	George Alexander	1827	600	120	120
Leeds		Sundry persons		3,685	780	786
Leeds	Sir R. S. Milnes	Isaac Todd	1801	11,760	2,420	2,630
Leeds	General Prescott	George Hamilton	December 7, 1812	8,002		
Leeds	Ditto					
Leeds		Sundry persons	1814 to 1826	6,000	1,200	1,200
Leeds	Lord Dalhousie	W. Heyden & W. Greiger	November, 1826	330	66	66
Leeds	Ditto	Hill Blaiklock	April 1827	600	120	120
Leeds	Ditto	Wm. Fraser	1827	100	20	20
Leeds	Ditto	J. Millar and Conkworth	1827	290	58	58
Leeds	Ditto	George Alexander	1827	200	40	40
Leeds	Ditto	William Saunders	January, 1828	186	32	32
Lingwick	Hon. J. Dunn	Sundry grantees	March 7, 1807	13,650	2,600	2,400
Lingwick	General Prescott	Hon. John Young	March 21, 1814	17,000		
Lochaber		Sundry persons		847	174	174
Lochaber	Sir R. S. Milnes	Archibald M'Millan, &c.	March 26, 1807	13,261	3,213	3,291
Lochaber		P. Wright, Esq.	1825	1,945	389	389
Maddington		Sundry persons		505	100	100
Maddington	Sir J. H. Craig	G. W. Allsopp	December 24, 1808	6,005		
Maddington	Ditto	Sundry persons	December 1, 1808	6,033		
Magdalen Islands		Sir Isaac Coffin		48,847		8,143
Melbourne	Sir R. S. Milnes	Henry Caldwell	April 3, 1805	26,153	5,932	6,184
Melbourne		Sundry persons	1817	4,900	980	980
Milton		Ditto		1,400	280	280
Milton	Sir R. S. Milnes	{ Officers and Privates of the B. Militia }	January 29, 1803	24,518	6,090	6,273
Milton	Lord Dalhousie	L. C. Duvert	May, 1827	500	100	100
Milton	Ditto	Francis Mount	August, 1827	500	100	100
Nelson	Sir R. S. Milnes	{ Officers and Privates of the Canadian Militia }	April 21, 1804	33,326	7,561	7,743
Newport		Sundry persons		400	80	80
Newport	Ditto	N. Taylor	August 4, 1803	12,600	2,400	2,400
Newport	Ditto	Edmund Heard	July 4, 1801	11,550	2,310	2,310
Newton	Ditto	C. De Lothiniere	March 6, 1805	12,961	2,331	2,526
Newton	Sir J. H. Craig	Saveuse de Beaujeu, &c.	April 25, 1811	1,137		
Onslow	Sir James Kempt	Sundry persons		252	40	40
Onslow	Sir R. S. Milnes	Forsyth and Richardson	March 9, 1805	1,073	210	210
Onslow	Sir J. H. Craig	Roswell Minor, &c. &c.	November 12, 1808	126,673		
Orford	Sir James Kempt	Settlers		348	70	70
Orford	Sir R. S. Milnes	Luke Knoulton	May 5, 1801	12,262	2,701	2,462
Orford		C. B. Felton	1816 to 1826	200	40	40
Potton	General Prescott	Lauchlan M'Lean	October 31, 1797	6,000	1,260	1,260
Potton	Sir R. S. Milnes	Henry Ruitter	July 27, 1803	27,580	5,516	5,516
Potton	Sir J. H. Craig	Thomas Shepherd	July 18, 1810	210		

LANDS GRANTED.

Reservations for Crown.	Reservations for Clergy.	TOWNSHIPS.	By whom granted.	Leaders of Townships.	Date of the Patent.	Number of Acres granted.	Reservations for Crown.	Reservations for Clergy.
2,310	2,310	Potton		William Osgood, Esq.	1815 to 1816	9,800	1,900	1,900
840	840	Rawdon		Sundry persons		4,900	960	960
40	40	Rawdon	General Prescott	James Sawyer	Ditto 1799	1,900	400	400
210	420	Rawdon	Sir R. S. Milnes	R. Henry Bruere and Selby	January 14, 1805	3,150	630	420
1,200	1,300	Rawdon	Lord Dalhousie	Sundry persons	1822 to 1826	2,200	440	440
1,109	1,138	Rawdon	Ditto	Roderick M'Kenzie	to 1827	100	20	20
768	770	Roxton		Sundry persons		1,300	260	260
1,990	2,520	Roxton	Sir R. S. Milnes	Ditto	January 8, 1803	24,784	4,620	4,620
1,822	1,822	Settrington	Lord Dalhousie	Ditto	Additions	13,000	2,593	3,189
40	40	Sheffield	Sir R. S. Milnes	John Savage	February 10, 1801	35,490	7,098	7,098
320	320	Sheffield 1,400, Stukeley 800, Hatley 600, Compton 1,000, Barnston 800, Stanstead 1,200, Shipton 2,000, & Granby 1,200	Lord Dalhousie	Francis Languedoc, Esq.	June, 1827	granted crown reserves 9,000	Ham equivalent 9,000 Proportion 1,800	1,800
2,448	2,422	Shenley	Sir J. H. Craig	James Glenny	May 1, 1810	10,298		
2,132	1,998	Sherrington	Ditto	Languedoc		2,633	525	525
1,080	1,080	Sherrington	Ditto	Francis Baby and others	February 22, 1809	19,278		
120	120	Sherrington	Ditto	Susan and Margaret Finlay	May 29, 1809	8,395		
780	786	Sherrington	General Prescott	Honourable J. Young	December 30, 1811			
2,420	2,630	Shipton	Sir R. S. Milnes	Elmer Cushing	December 4, 1803	58,692	11,725	11,739
		Shipton	Sir J. H. Craig	James Barnard	July 10, 1810	210		
		Simpson		Lientenant-Colonel Heriot		528	100	100
1,200	1,200	Simpson	Sir R. S. Milnes	{ Officers and Privates of } { the Canadian Militia }	Ditto 1802	42,135	9,326	8,387
66	66	Somerset	Ditto	Ditto	Ditto 1804	38,790	7,483	7,619
120	120	Stanbridge	Ditto	Hugh Finlay, Esq.	September 1, 1800	41,790	8,820	8,610
20	20	Standon		Sundry persons		2,119	420	420
58	58	Stanfold	Sir J. H. Craig	Jenkin Williams, &c.	July 8, 1807	26,810		
40	40	Stanstead		Sundry persons		400	80	80
32	32	Stanstead	Sir R. S. Milnes	Isaac Ogden	September 27, 1800	27,720	5,250	5,040
2,600	2,400	Stanstead	Ditto	Richard Adams	December 6, 1803	1,276	210	173
		Stanstead	Ditto	Sundry persons	August 2, 1805	3,578	511	511
174	174	Stanstead	Sir J. H. Craig	Sir R. S. Milnes	March 12, 1810	21,406		
3,213	3,291	Stoke	Sir R. S. Milnes	James Cowan	February 13, 1802	43,620	10,542	8,912
389	389	Stoke	Ditto	{ Minor Children of Wm. } { Boutellier }	August 28, 1802	1,890	378	378
100	100	Stonham	Ditto	Sundry persons		400	80	80
	8,143	Stonham		Kenehl Chandler	May 14, 1800	24,000	3,428	3,428
3	5,932	Stonham		S. Graham	1810 to 1826	200	40	40
0	980	Stonham	Lord Dalhousie	G. Reynar	July 1827	200	40	40
0	280	Stukeley	Sir R. S. Milnes	Samuel Willard	November 3, 1800	23,625	4,200	4,650
8	6,090	Stukeley	Sir G. Drummond	{ Right Rev. Jacob, Lord } { Bishop of Quebec }	1816	4,435	881	734
0	100	Sutton	Ditto	Sundry persons	August 31, 1802	39,900	8,000	7,800
0	100	Sutton	Sir John Sherbrooke	{ Chief Justice Osgood & } { Mrs. Davidson }	July 1817	4,300	880	880
26	7,561	Templeton		Sundry persons		1,095	200	200
0	80	Templeton	Hon. T. Dunn	Archibald M'Mellan, &c.	March 26, 1807	8,949	2,052	1,829
0	2,400	Templeton	Lord Dalhousie	James Green	April 1827	364	72	72
50	2,310	Templeton	Sir J. H. Craig	Sundry grantees	November 29, 1800	8,620		
51	2,331	Tewkesbury		Courtenay		400	80	80
37		Tewkesbury	Sir R. S. Milnes	Captain Wulf	September 18, 1800	2,000	400	400
52	40	Tewkesbury	Ditto	Denis Letourneau	May 4, 1800	24,000	4,610	4,620
73	210	Thetford	Ditto	John Mervin Nooth	November 10, 1802	23,100	4,620	4,410
74		Tingwick		Sundry persons		400	80	80
48	70	Tingwick	Ditto	Ditto	January 23, 1804	23,730	5,040	4,620
62	2,701	Tingwick	Ditto	Hon. J. Young & others	1817	21,000	4,200	4,200
00	40	Tring	Ditto	Sundry persons	July 20, 1804	22,995	4,400	4,400
00	1,260	Upton	Ditto	Ditto		2,913	580	580
80	5,516	Upton	Ditto	David Alexander Grant	May 21, 1800	25,200	5,210	5,000

LOWER CANADA.

TOWNSHIPS.	By whom granted.	Leaders of Townships.	Date of the Patent.	Number of Acres granted.	Reservations for Crown.	Reservations for Clergy.
Upton	Sir J. H. Craig	Lewis Schmidt and fam.	May 27, 1809	678		
Upton and Augmentation		{ Mr. De Montenach and Josias Wurtele . . . }	1822 to 1823	735	147	147
Warwick		Sundry persons		800	160	160
Warwick	Sir R. S. Milnes	Ditto	January, 1804	23,940	4,830	4,830
Weedon		Sundry persons	1814 to 1823	11,800	2,400	2,400
Wendover Gore		Ployart		200	40	40
Wendover	Ditto	Ditto	June 24, 1805	12,558	2,739	2,266
Wendover	Sir J. H. Craig	Benj. and Alex. Hart	September 26, 1808	200		
Wendover		Sundry persons	1815 to 1819	1,600	320	320
Wendover Gore	Lord Dalhousie	John Leggat	February, 1823	300	60	60
Wendover, Remnant or Augmentation		C. De Montenach		565	113	113
Wendover Augmentation		W. Gibson		300	60	60
Wentworth	Sir J. H. Craig	Jane de Montmoulin, &c.	June 3, 1809	12,390		
Westbury	Sir R. S. Milnes	Henry Caldwell	March 13, 1804	12,262	2,701	2,462
Wiekham		Lieutenant-Colonel Heriot		754	150	150
Wiekham	Ditto	William Lindsay	August 31, 1802	23,753	5,364	4,489
Wiekham		Ditto and others	Since 1814	28,945		4,311
Windsor	Ditto	Mary Charlotte de Castelle	May 17, 1804	420	84	84
Windsor	Ditto	{ Officers and Privates of the Canadian Militia }	July 14, 1802	50,900	10,641	10,665
Windsor, Simpson, Somers- set, and Nelson	Sir J. H. Craig	Sundry persons	December 27, 1808	3,780		
Wolfstown		Ditto		1,500	300	300
Wolfstown	Sir R. S. Milnes	Nicholas Montour	August 14, 1802	11,550	2,310	2,310

LANDS GRANTED AND LOCATED.—OLD COUNTY DIVISION. 19

Number of Acres granted.	Reservations for Crown.	Reservations for Clergy.
678		
735	147	147
800	160	160
23,940	4,830	4,830
11,800	2,400	2,400
200	40	40
12,558	2,739	2,266
200		
1,600	320	320
300	60	60
565	113	113
300	60	60
12,390		
12,262	2,701	2,462
754	150	150
23,753	5,364	4,489
28,945	Crown Reserves, including quantity granted.	4,311
420	84	84
50,900	10,641	10,665
3,780		
1,500	300	300
11,550	2,310	2,310

Statement of the Lands granted under Patent; those under Orders of Reference for Patents, and those still held under Locations, together with the Quantum of Land remaining ungranted in the Province of Lower Canada within the Townships surveyed and projected, 1829.

No. 1. Total granted and under orders of reference for patents.	No. 2. Total No. of acres granted by the provincial secretary's list.	No. 3. Difference in acres between No. 1 and No. 2.	No. 4. Quantity of acres still held under locations.	No. 5. Total quantum granted by columns No. 1 and No. 4.	No. 6. Total No. of acres remaining ungranted within the surveyed townships, in whole or in part.	No. 7. Quantum of acres in townships not yet surveyed.	No. 8. Grand total of acres remaining ungranted.	RESERVATIONS.	
								Appropriated for the maintenance and support of the protestant clergy within the province.	Appropriated for the crown.
2,760,698	2,620,855	139,843	350,500	3,111,198	1,446,171	3,233,310	4,679,481	533,349	533,289

Division of the Counties in the Province of Lower Canada.

Old County Division.	No. of new counties in the old ones.	New County Division, by Act of the Provincial Parliament, March 1829.
Bedford	2	Rouville and Missisqui
Buckingham	6	Yamaska, Drummond, Nicolet, Lotbiniere, Sherbrooke, and Megantic
Cornwallis	2	Kamouraska and Rimouski
Devon	1	Islet
Dorchester	2	Beauce and Dorchester
Effingham	1	Terrebonne
Gaspé	2	Bonaventure and Gaspé
Hampshire	1	Portneuf
Hertford	1	Bellechasse
Huntingdon	3	Acadie, Beauharnois, and La Prairie
Kent	1	Chambly
Leinster	2	L'Assomption and La Chenay
Montreal	1	Idem
Northumberland	2	Montmoreney and Saguenay
Orleans	1	Idem
Quebec	1	Idem
Richelieu	4	Richelieu, Saint Hyacinthe, Shefford and Stanstead
St. Maurice	2	St. Maurice and Champlain
Surrey	1	Vercheres
Warwick	1	Berthier
York	3	Two Mountains, Vaudreuil and Ottawa
Total	40	new counties into which the 21 old counties are divided

List of the Members of the Honourable the Legislative Council of the Province of Lower Canada, from the Commencement of the Constitution in 1792 up to the Year 1829.*

Took their seat in the Years	Names.
1792.	Chief Justice Smith.
—	J. G. Chaussegros De Léry.
—	Hugh Finlay.
—	Picotté De Bellestre.
—	Thomas Dunn.
—	Paul Roe de St. Ours.
—	Edward Harrison.
—	François Baby.
—	John Collins.
—	Joseph De Longueuil.
—	Charles De Lanaudière.
—	George Pownall.
—	R. A. De Boucherville.
—	John Fraser.
1793.	Henry Caldwell.
1795.	Right Reverend Jacob, Lord Bishop of Quebec.
—	Chief Justice Osgoode.
—	Chief Justice Monk.
1797.	Sir John Johnson, Bart.
—	Chartier De Lotbinière.
1799.	Gabriel Elzéar Taschereau.
1803.	Chief Justice Elmsley.
—	Mr. Justice Williams.
1807.	Chief Justice Allecock.
1809.	* Chief Justice Sewell.
1810.	* Charles De St. Ours.
—	* John Hale.
—	Antoine Duchesneau Duchesnay.
1812.	Amert De Gaspé.
—	* James Cuthbert.
—	* Herman Witsins Ryland.
—	J. B. M. H. De Rouville.
—	* John Caldwell.
1814.	John Blackwood.
—	William de Gillivray.
1815.	* Pierre Dominique Debaltzeh.
—	* Charles William Grant.

* Those marked * now compose the Council.

Took their seat in the Years	Names.
1816.	John Richardson.
—	Louis De Salaberry.
1818.	William Burns.
—	Reverend Joseph Octave Plessis, Roman Catholic Bishop of Quebec.
—	Thomas J. P. Taschereau.
—	* Thomas Coffin.
—	William Scott.
—	Michael Henry Pereival
—	Roderiek M'Kenzie.
—	Olivier Perrault.
—	* Louis René Chaussegros De Léry.
—	James Irvine.
—	Louis Turgeon.
1819.	* Louis Gngy.
—	Charles de Salaberry.
1823.	* Matthew Bell.
—	* William Bowman Felton.
—	* James Kerr.
—	* Edward Bowen.
1827.	* Toussaint Pothier.
—	* John Stewart.
—	* John Forsyth.
1828.	* Jean Thomas Taschereau.
—	* Right Reverend Charles James, Lord Bishop of Quebec.
1830.	* Saveuse de Beaujeu.
—	* Denis B. Viger.
—	* Samuel Hatt.
—	* George Moffatt.
—	* Ls. Guy.

Number of Sessions in each Parliament and their Duration,

PARLIAMENTS.	1st	2nd	3rd	4th	5th	6th
Counties.	17th December, 1792. 9th May, 1793. 11th November, 1793. 21st May, 1794. 1795. 7th May, 1795. 20th November, 1795. 7th May, 1796.	24th January, 1797. 2nd May, 1797. 2nd February, 1798. 11th May, 1798. 22nd March, 1798. 2nd June, 1798. 5th March, 1800. 25th May, 1800.	1800. 6th April, 1800. 11th January, 1802. 5th April, 1802. 30th April, 1802. 18th April, 1802. 2nd to the 10th August, 1802. 10th February, 1804. 2nd May, 1804.	1805. 25th March, 1805. 26th February, 1806. 19th April, 1806. 1st January, 1807. 16th April, 1807. 29th January, 1808. 14th April, 1808.	1808. 10th April, 1808. 13th May, 1808.	1810. 29th January, 1810. 26th February, 1810.
County of Gaspé	Ed. O'Hara	Ed. O'Hara	Win. Vundendeiden	George Pyke	George Pyke	George Pyke
- Cornwallis	P. S. Panet Jean Dige	Pascal Tirlois Alex. Menut	Joseph Boucher Alex. Menut	J. N. Perrault Alex. Bol	Jos. L. Hurgla Jos. Robetaille	Jos. L. Hurgla Jos. Hobetaille
- Devon	Frs. Dambourges Jas. Tod	N. Dorion F. Bernier	Bernard Pettler, fils F. Bernier	J. B. Fortin F. Bernier	J. B. Fortin F. Bernier	J. B. Fortin F. Bernier
- Hertford	P. Marcoux Louis Dunlère	P. Marcoux F. Teto	Michel Tellier Louis Blais	Louis Turgeon C. F. Roy	Louis Turgeon C. F. Roy	F. Blanchet C. F. Roy
- Dorchester	Gab. Elz. Taschereau Louis de Salaberry	Charles Heglin Alex. Dumas	John Caldwell Thos. Taschereau	John Caldwell Thos. Taschereau	John Caldwell Pierre Langlais	Thos. Taschereau Pierre Langlais
- Buckinghamshire	A. Juc. Duchesnay J. M. Tonnancour Paine John Barnes	John Craigie G. W. Allsopp Jonathan Sewell	John Craigie Louis Guin Jonathan Sewell	Louis Proulx F. Legendre Jonathan Sewell	J. B. Hebert Louis Legendre Jonathan Sewell	I. B. Hebert F. Legendre Edward Bowen
Borough of William Henry	Pierre Guertout Henj. Cherrier	Charles Millette Henj. Cherrier	L. E. Hubert C. H. Livernols	Louis Bourdages Louis Brodeur	Louis Bourdages H. M. Delorme	Louis Bourdages H. M. Delorme
County of Richelieu	J. B. M. H. de Rouville	Nath. Coffin	John Steele	W. S. Moore	W. S. Moore	John Jones
- Bedford	Phillip de Rocheblave Fran. Malhot	Phillip de Rocheblave O. Durocher	Phillip de Rocheblave F. Levesque	Noel de Rocheblave Jacques Cartier	Pascal Chagnon Jacques Cartier	Pierre Bedard Jos. Heuchamp
- Surrey	Réné Holleau Pierre Legras Pierreville	A. Menard Lafontaine J. Vigé	A. Menard Lafontaine Fran. Vigé	Pierre Wilbrenner Fran. Vigé	Joseph Planté L. J. Papineau, fils	P. D. Dehartach L. J. Papineau, fils
- Huntingdon	Hyp. St. George Dupré G. C. Lorimier	J. Perinault Jos. Perrault	J. B. Rahmond J. F. Perrault	J. B. Halmoud Sir A. McKenzie	Louis de Salaberry J. A. Panet	Stephen Sewell J. A. Panet
- York	M. E. G. Ch. de Lotbinière P. G. de Bonne	Hubert Lacroix J. Hettier	Jus. Bedard L. C. Foucher	John Mure E. L. Dumont, fils	John Mure Jean Jus. Trestler	Pierre St. Julien
- Montreal	Jos. Papineau James Walker	J. M. Ducharme E. Guy	Jos. Papineau Thos. Walker	Henj. Froisher L. Roi Portelance	J. B. Durocher L. Roi Portelance	J. B. Durocher L. Roi Portelance
Westward of Montreal	James McGill J. B. Durocher	Joseph Papineau D. Viger	James McGill Joseph Perinault	Jas. McGill Louis Chaboillez	Wm. McGillivray D. H. Viger	Thos. McGill D. H. Viger
Eastward of Montreal	Joseph Frobisher John Richardson	A. Auldjo L. C. Foucher	P. L. Panet F. Badgely	John Richardson J. M. Mondelct	Jas. Stuart J. M. Mondelct	James Stuart Jos. Papineau
County of Effingham	Jacob Jordan Joseph La Croix	Jacob Jordan C. B. Bouc	André Nadon C. B. Bouc	André Nadon Thos. Porteous	Jos. Meunier Jos. Duclou	Jos. Meunier Jos. Duclou
- Leinster	Frs. Ant. Larocque Bonav. Panet	Joseph Viger Bonav. Panet	Jos. Heaumont J. Archambault	C. G. de Lanaudiere J. Archambault	Jos. E. Faribault Jos. Turgeon	Hon. Panet T. Taschereau
- Warwick	P. P. M. La Valtrie Louis Olivier	J. Cuthbert G. de Lanaudiere	J. Cuthbert Ross Cuthbert	J. Cuthbert Ross Cuthbert	J. Cuthbert Ituss Cuthbert	J. Cuthbert Ross Cuthbert
Borough of Three Rivers	John Lees Nicolas S. Martin	John Lees P. A. de Bonne	John Lees P. A. de Bonne	John Lees Lé. Chs. Foucher	Jos. Hadeaux Ezekiel Hart	Jos. Padoux Matt. Hart
County of St. Maurice	Thomas Coffin Augustin Rivard	Thos. Coffin N. Montour	Thomas Coffin Matt. Bell	David Munro Michel Carron	Thos. Coffin Michel Carron	Louis Goguy Michel Carron
- Hampshire	Matthew M. Nider Jean Houdeau	Joseph Planté François Huot	Joseph Planté François Huot	Joseph Planté L. A. J. Duchesnay	F. Huot L. A. J. Duchesnay	F. Huot L. A. J. Duchesnay
- Quebec	Louis de Salaberry David Lynd	John Black Louis Paquet	M. A. Berthelot Louis Paquet	M. A. Berthelot P. A. de Bonne	R. Gray P. A. de Bonne	R. Gray P. A. de Bonne
Upper Town Quebec	J. Ant. Panet William Grant	J. Ant. Panet William Grant	J. Ant. Panet J. Raby	John Blackwood Wm. Grant	John Blackwood Claude Denechau	John Blackwood Claude Denechau
Lower Town Quebec	Hubert Lester John Young	A. J. Raby John Young	Hubert Lester John Young	Ls. de Salaberry John Young	Pierre Bedard John Jones	Pierre Bedard John Jones
County of Northumberland	Pierre Bedard Joseph Dufour	Pierre Bedard James Fisher	Pierre Bedard J. M. Poullin	Pierre Bedard J. M. Poullin	Augustin Carron J. M. Poullin	Jos. Drapeau Thos. Lee
- Orleans	Nic. Gaspard Boisseau	Jerome Martineau	Jerome Martineau	Jerome Martineau	Jerome Martineau	Jerome Martineau

l their Duration,

from the Commencement of the Constitution in 1792.

6th	7th	8th	9th	10th	11th	12th	13th
29th January, } 1810. 26th February, }	12th December, 1810. 12th March, 1811. 21st February, } 1812. 19th May, } 16th July, } 1812. 1st August, } 25th December, 1812. 12th February, 1813. 14th January, } 1814. 17th March, }	21st January, } 1815. 25th March, } 26th January, } 1816. 26th February, }	15th January, } 1817. 22nd March, } 1st January, } 1818. 12th January, } 1819. 24th April, }	11th to 24th April, 1820.	14th December, 1820. 17th March, 1821. 11th December, 1821. 10th February, 1822. 10th January, } 1823. 22nd March, } 25th November, 1823. 5th March, 1824.	8th January, } 1825. 22nd March, } 21st January, } 1826. 20th March, } 27th January, } 1827. 7th March, }	24th to 22nd } 1827. November, } 21st November, 1828. 14th March, 1829.
George Pyke Jos. L. Borgia Jos. Robetaille J. B. Fortin E. Bernier P. Blanchet C. F. Roy Thos. Taschereau Pierre Langlois J. B. Hebert E. Legendre Edward Bowen Louis Bourdages Hy. M. Delorme John Jones Pierre Bedard Jos. Heuchamp P. D. Dehartzch L. J. Papineau, fils Stephen Sewell J. A. Panet John Mure Pierre St. Julien J. B. Durocher L. Roi Portelance Thos. M'Curd D. B. Viger James Stuart Jos. Papineau Jos. Meunier Jos. Duclou Hon. Panet T. Taschereau J. Cuthbert Ross Cuthbert Jos. Padoux Matt. Bell Louis Goguy Michel Carron F. Huot L. A. J. Duchesnay R. Gray P. A. de Honne John Blackwood Claude Denechau Pierre Bedard John Jones Jos. Drapeau Thos. Lee Jerome Martineau	George Pyke Jos. L. Borgia Jos. Robetaille J. B. Fortin E. Bernier F. Blanchet C. F. Roy John Caldwell Pierre Langlois J. B. Hebert F. Legendre Edward Bowen Louis Bourdages Hy. M. Delorme Alexis Desblais Pierre Bedard Jos. Bedard P. D. Dehartzch L. J. Papineau, fils Edme Henry J. A. Panet Frans. Bellet Pierre St. Julien J. B. Durocher L. Roi Portelance E. N. St. Dezler A. N. M'Leod Stephen Sewell Jos. Papineau Jos. Meunier J. Malbecof Jac. Archambault D. B. Viger J. Cuthbert Louis Olivier Thos. Coffin Matt. Bell Frans. Caron Michel Carron F. Huot F. X. Larue Louis Gauvreau J. Hts. Bedard James Irvine Claude Denechau John Mure Pierre Bruneau Jos. Drapeau Thos. Lee Chs. Blouin	George Brown Jos. L. Borgia Jos. Robetaille Frs. Fournier J. F. C. Després F. Blanchet C. F. Roy J. T. Taschereau John Davidson Frs. Bellet James Stuart Roht. Jones S. Cherrier F. Malhot Henry Georgan Pierre Amlot Etienne Duchesnois Jos. Bresse Noel Hroux Austin Cuvillier Michael O'Sullivan E. N. L. Dumont Wm. Forbes Jos. Stuart Augn. Richer L. J. Papineau James Fraser Savense de Beaujeu George Platt Samuel Sherwood J. Malbecof Jacques Lacombe D. B. Viger Jacques Deligny Ross Cuthbert C. R. Ogden Annab. Berthelot Etienne Leblanc P. R. Vallieres de St. Real F. Huot G. W. Allsopp Louis Gauvreau Peter Brehaut J. A. Panet Claude Denechau Andw. Stuart Pierre Bruneau E. C. Lagueux Thos. Lee Chs. Blouin	Jas. Cockburn Jos. L. Borgia Jos. Robetaille Frs. Fournier J. F. C. Després Louis Turgeon C. F. Roy J. T. Taschereau John Davidson Frs. Bellet Jos. Badaeux Roht. Jones S. Cherrier Jean Dessaulles Thos. M'Cor Pierre Amlot Etienne Duchesnois D. B. Viger Pierre Bruneau, sen. Austin Cuvillier Michael O'Sullivan E. N. L. Dumont J. H. Ferre Jos. Stuart Augn. Richer L. J. Papineau P. Soullgny Louis Roi Portelance John Moison Samuel Sherwood J. Malbecof Jacques Lacombe Benjn. Beanpre Jacques Deligny J. D. Bondy C. R. Ogden Pierre Vezina Etienne Mayrand Ls. Gogy F. Huot G. W. Allsopp Louis Gauvreau John Nelson Geo. Vanfelson Claude Denechau Andw. Stuart Frs. Languedoc C. L. Lagueux Phillippe Panet Chs. Blouin	No return J. H. Taché Jos. Robetaille Frs. Fournier J. Ba. Fortin F. Blanchet F. X. Paré Louis Lagueux John Davidson Frs. Bellet Ls. Bourdages Roht. Jones Frs. St. Onge Jean Dessaulles Jos. Franchere Pierre Amlot Etienne Duchesnois D. B. Viger Pierre Bruneau, sen. Austin Cuvillier Michael O'Sullivan E. N. L. Dumont Aug. Perrault Jos. Perrault Jos. Valois L. J. Papineau Geo. Garden Hugues Heney Thos. Busby Jacob Oldham Frs. Tassé Jacques Lacombe Barth. Juliette Alexis Mousseau Ross Cuthbert C. R. Ogden J. T. de Tonnancour Ls. Pleutte Pierre Horeau F. Huot Chs. Langerin Louis Gauvreau John Nelson Vallieres de St. Real Andw. Stuart Jean Belanger James M'Callan E. C. Lagueux Phillippe Panet Frs. Quirouet	J. T. Taschereau J. H. Taché Jos. Robetaille Frs. Fournier J. Ba. Fortin F. Blanchet F. X. Paré Louis Lagueux John Davidson J. H. Proulx Ls. Bourdages Roht. Jones Frs. St. Onge Jean Dessaulles John Jones, jun. Pierre Amlot Etienne Duchesnois D. B. Viger F. A. Quesnel Austin Cuvillier Michael O'Sullivan E. N. L. Dumont Aug. Perrault Jos. Perrault Jos. Valois L. J. Papineau Geo. Garden Hugues Heney Thos. Thuin Jacob Oldham Frs. Tassé Jacques Lacombe Michl. Prevost Alexis Mousseau Jacq. Deligny C. H. Ogden Jos. Badaeux Ls. Pleutte Pierre Horeau F. Huot Chs. Langerin Louis Gauvreau John Nelson Vallieres de St. Real Andw. Stuart Jean Belanger James M'Callan E. C. Lagueux Phillippe Panet Frs. Quirouet	J. T. Taschereau J. L. Borgia Jos. Robetaille J. C. Després J. Ba. Fortin F. Blanchet N. Boissonnault Louis Lagueux John Davidson J. H. Proulx Ls. Bourdages N. F. Uelacke Roht de St. Ours Jean Dessaulles J. R. R. H. de Rouville Pierre Amlot Alme Masnie D. B. Viger F. A. Quesnel Austin Cuvillier J. M. Raymond E. N. L. Dumont John Simpson Jos. Perrault Jos. Valois L. J. Papineau P. de Rocheblave Hugues Heney James Leslie Casimir de Montigny Jos. Ovide Turgeon Charles Courteau Jean Marie Dochon L. M. D. Barlier Jacq. Deligny C. R. Ogden Dumoulin Chas. Caron Pierre Bureau F. X. Larue John Cannon Michl. Clouet John Nelson Vallieres de St. Real Andw. Stuart Thos. Lee Thos. A. Young M. P. de Sales L'aterrière E. C. Lagueux Frs. Quirouet	Robert Christie J. L. Borgia Jos. Robetaille J. C. Letourneau J. Ba. Fortin F. Blanchet N. Boissonnault Louis Lagueux Joseph Samson J. R. Proulx Ls. Bourdages Wolfred Nelson Roht de St. Ours Jean Dessaulles J. R. R. H. de Rouville Pierre Amlot Francois Malhot D. B. Viger F. A. Quesnel Austin Cuvillier J. M. Raymond Jacques Labrie J. B. Lefebvre Jos. Perrault Jos. Valois L. J. Papineau Robert Nelson Hugues Heney James Leslie Augustin Papineau Jos. Ovide Turgeon L. Leroux J. Poirier Alexis Mousseau Jacq. Deligny C. R. Ogden Dumoulin Chas. Caron Pierre Bureau F. X. Larue John Cannon Michl. Clouet John Nelson Vallieres de St. Real Andw. Stuart Thos. Lee Thos. A. Young M. P. de Sales L'aterrière E. C. Lagueux Frs. Quirouet

CONTINUATION OF TABLE B.

N.10.

To LA CHINE across the RIVER ST-LAWRENCE.

Halifax	
7.00	1.00
7.00	1.00
7.00	1.00
7.00	1.00
7.00	1.00
7.00	1.00
7.00	1.00
7.00	1.00
7.00	1.00
7.00	1.00
7.00	1.00

Halifax	
7.00	1.00
7.00	1.00
7.00	1.00
7.00	1.00
7.00	1.00
7.00	1.00
7.00	1.00
7.00	1.00
7.00	1.00
7.00	1.00
7.00	1.00

From ANCASTER. Westward. Twice a Week

N.14.

N.11.

Cross Route from the ST-LAWRENCE to the OTTAWA via BROCKVILLE & HULL.

Halifax	
7.00	1.00
7.00	1.00
7.00	1.00
7.00	1.00
7.00	1.00
7.00	1.00
7.00	1.00
7.00	1.00
7.00	1.00
7.00	1.00
7.00	1.00

Halifax	
7.00	1.00
7.00	1.00
7.00	1.00
7.00	1.00
7.00	1.00
7.00	1.00
7.00	1.00
7.00	1.00
7.00	1.00
7.00	1.00
7.00	1.00

From BATH U.C. to PRINCE EDWARDS COUNTY

Halifax	
7.00	1.00
7.00	1.00
7.00	1.00
7.00	1.00
7.00	1.00
7.00	1.00
7.00	1.00
7.00	1.00
7.00	1.00
7.00	1.00
7.00	1.00

Halifax	
7.00	1.00
7.00	1.00
7.00	1.00
7.00	1.00
7.00	1.00
7.00	1.00
7.00	1.00
7.00	1.00
7.00	1.00
7.00	1.00
7.00	1.00

N.12.

From SAINT THOMAS & PORT TALBOT

Halifax	
7.00	1.00
7.00	1.00
7.00	1.00
7.00	1.00
7.00	1.00
7.00	1.00
7.00	1.00
7.00	1.00
7.00	1.00
7.00	1.00
7.00	1.00

Halifax	
7.00	1.00
7.00	1.00
7.00	1.00
7.00	1.00
7.00	1.00
7.00	1.00
7.00	1.00
7.00	1.00
7.00	1.00
7.00	1.00
7.00	1.00

N.13.

To WATERFORD, VICTORIA &c. via BRANTFORD

Halifax	
7.00	1.00
7.00	1.00
7.00	1.00
7.00	1.00
7.00	1.00
7.00	1.00
7.00	1.00
7.00	1.00
7.00	1.00
7.00	1.00
7.00	1.00

Halifax	
7.00	1.00
7.00	1.00
7.00	1.00
7.00	1.00
7.00	1.00
7.00	1.00
7.00	1.00
7.00	1.00
7.00	1.00
7.00	1.00
7.00	1.00

N.15.

To GALT & GUELPH via DUNDAS

Halifax	
7.00	1.00
7.00	1.00
7.00	1.00
7.00	1.00
7.00	1.00
7.00	1.00
7.00	1.00
7.00	1.00
7.00	1.00
7.00	1.00
7.00	1.00

Halifax	
7.00	1.00
7.00	1.00
7.00	1.00
7.00	1.00
7.00	1.00
7.00	1.00
7.00	1.00
7.00	1.00
7.00	1.00
7.00	1.00
7.00	1.00

