

BRACEBRIDGE

AND ITS

WATER POWERS



ISSUED UNDER THE AUSPICES
BRACEBRIDGE COUNCIL
AND BOARD OF TRADE

1903



FENN, ANDERSON & CO.

Have values more tempting than ever and are in a position to even better supply the public in the many lines of goods we carry. We are here to please the buying public, and guarantee quality as well as price. In our store you will find a good supply of

...DRY GOODS...

such as Ladies' ready-to-wear goods and notions, also Men's Clothing in endless variety, and an up-to-date stock for Boys and Youths. Our Gents' Ties, Collars, Cuffs, Suspenders, Underwear, Topshirts, etc., are new and nobby.

We sell Gents' Hats and Caps in felt, linen, and straw for the hot summer weather.

Our Boot and Shoe Department is always in it, the best goods are always in our store and prices make them sell.

You will always find our Groceries fresh, and prices away down.

We will be pleased to welcome old customers, as well as new ones, who will enter our place of business.

All mail or telephone orders will receive our best attention, and we deliver all goods to any boat or train.

We are doing business in the old stand, opposite Armstrong, the butchers.

Thanking our many customers,

We remain, yours,

FENN, ANDERSON & CO.,

Bracebridge and Baysville.

THE LARGEST
AND MOST
COMPLETE

GROCERY .
PROVISION
FLOUR . . .
FEED
SEED AND
CROCKERY
STORE .

IN THE
MUSKOKA
DISTRICT IS
IN
BRACEBRIDGE

IT is run on the Cash System and sound business principles. Its numerous customers on Muskoka Lakes, from the World over, its large trade with the surrounding country and its ever increasing town business, speak volumes for its character. New comers to town make it their base of supply, and receive careful and prompt attention.



WHEN YOU
COME TO TOWN
ASK FOR

HUTCHISON BROS.

LOCAL AND LONG
DISTANCE TELEPHONES.

BRACEBRIDGE

BRACEBRIDGE AND ITS WATER POWERS



BRACEBRIDGE holds forth to the manufacturer unlimited attractions, and many are taking advantage of these and are securing desirable sites for the erection of extensive buildings and the installation of mammoth plants. Situated 120 miles north of Toronto, on the northern division of the Grand Trunk Railway System, it is recognized by all classes of com-



On Front Street, Bracebridge.

mercial travellers as the liveliest and safest town for business on their route. This may, to some extent, be due to the men who live here, but principally to those inherent natural facilities which sooner or later must have induced men with capital to invest where they were sure of permanent value and sure increase.

Starting as a lumber supply village in the early sixties, over sixty miles from any railroad, its superior situation at the head of navigation on the Muskoka river, with steamboat communication over the chain of Muskoka lakes, enabled it to obtain the concentration in itself of the district colonization roads, and when at last the railroad passed through, building up towns and villages

where previously there was nothing but lumber camps and scattered settlers, Bracebridge forged ahead as the business centre of the district not only for the neighboring settlers, but as a semi-wholesale mart for the smaller places, whose traders find it pays them better to select their goods here than place their orders with city houses; so that many of our stores carry an assortment of goods that in style and quantity surprise the visitor who thought he was coming to the backwoods. And this is particularly the case with the ever-increasing tide of tourists who flock to the cool retreats of our

unrivalled lakes. Many of them hastening away from the sunny south, think they must outfit before they get here, and before they know what they will require, and then find that they would have been much better suited here, at much less cost.

The facilities for residents are equally good, and the style of many of the



Bank of Ottawa, Bracebridge.

houses and their well-kept grounds, is evidence of the prosperity of the citizens who have ever kept up to the spirit of the times in educational requirements. There is a twelve-roomed school house with a carefully-selected staff of teachers for public and high-school classes, and model school.

There are ten churches, also a free library with between three and four thousand volumes, and reading-room which receives on its tables all the leading papers and periodicals.

Bracebridge being the central town of the district, the Government buildings for judicial business, including court-house, jail and registry office are here situated.



High Falls, near Bracebridge.

The beautiful and commodious building erected a short time ago by the Bank of Ottawa, and used exclusively by them, speaks volumes for the confidence financial men have in the future of the town.



Memorial Park, Bracebridge.

The bank is under the management of Mr. C. C. Billings, does a general banking business, and is of real value to the large manufacturing industries of the town.

For recreation and beauty, the place is well supplied with parks, having two; one of which called Jubilee Park comprises twelve acres and is used for sports of all kinds, and has erected on it a fine building used by the Agricultural Society for fall-fair purposes; the other (Memorial Park) was recently established by the town in memory of one of Bracebridge's sons, Fred. Wasdell, who was killed at Paardeberg.

There are two first-class printing offices in town, the "Muskoka Herald" and the "Free Grant Gazette," both papers having a wide circulation throughout the district.

The professions are well represented, there being a number of both the medical and legal, all of high order.

But neither the far-famed beauties of the Muskoka lakes nor the centering of the farm trade of Muskoka, could have built up such a town

as Bracebridge if it were not for its splendid manufacturing facilities.

Located here, are two of the largest tanneries in the province of Ontario, exporting sole leather to the British market. A woollen mill, whose specialty in Mackinaw cloths has a reputation throughout the Dominion of Canada, and which during the past year has made extensive additions to its buildings and machinery.

A company was organized here last year to control the patent and manufacture an acetylene generator so safe and simple in construction that the demand for it already requires them to increase their capacity.

Besides these, there are sawmills and sash-and-door factories fitted with the most modern and improved machinery, flour mill, foundry, machine shops, and various other mechanical works.

Among the industries to be started in 1903, the foremost is a very extensive up-to-date furniture factory advantageously situated on the bank of the Muskoka river adjacent to the railway station, and whose main building, 128 by 60 feet, six stories high (with basement), forms an imposing and prominent structure, in conjunction with their other buildings consisting, so far, of boiler-house (48 by 24) and two-story dry kiln (100 by 20). The



Bracebridge Falls.

machinery is being furnished by the best makers in Canada and the United States, and when completed their staff will number about 150 hands. The factory will be one of the best-equipped in Canada.

On the 5th of January, 1903, a vote was taken for the purpose of ratifying an agreement entered into between the town council and the promoters of a linen factory—the first in the Dominion. The by-law was carried by a large majority, and it is presumed considerable headway will be made towards the erection of the necessary plant during the present year.

The town corporation owns a magnificent water power, operating its own water and electric systems,



The Power House, Bracebridge.

and disposes of its surplus power for manufacturing purposes at a rate far below that charged by power corporations at the big power stations on the Niagara and St. Lawrence.

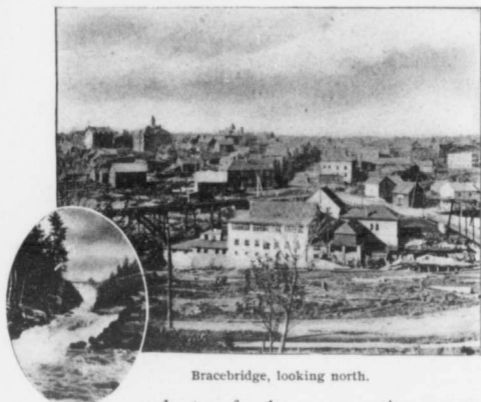
It is the water power that has been and must become still more the attraction to Bracebridge for manufacturers. Within the town limits or adjacent to them, are thousands of horse-power for the most part running to waste, and these with the increasing cost of fuel and the improvements being made in electrical transmission insure the permanent growth of Bracebridge as a manufacturing centre, for the town is situated at the confluence of two rivers flowing from an elevated plateau that is covered



SOME OF THE BRACEBRIDGE CHURCHES :

- 1. St. Joseph Church (Roman Catholic).
- 2. Baptist Church.
- 3. Methodist Church.
- 4. Knox Church (Presbyterian).
- 5. St. Thomas Church (Anglican).

with lakes whose waters, pent in by the rocky ridges of the Laurentian ranges, escape through narrow gorges, making the cost of harnessing these waters to assist the natural storage, a bagatelle, and to keep up a constancy of supply very much superior to the flow of rivers through alluvial lands,



Bracebridge, looking north.

The South Falls.

and at a far less comparative expense of installation. It is in this splendid supply of cheap power unaffected by the price or scarcity of fuel, and in its abundant resources of oak, elm, beech, birch and basswood timbers, that Bracebridge feels itself safe from all future contingencies. The town council are always ready to grant the best inducements to manufacturers, and furnish them with power at the very low price of \$12.50 per horse-power per annum, being about one half the rate charged by other power stations located in different parts of the country.

Bracebridge has applied for a new wharf to be placed at the foot of the falls, and has every reason to believe that its request will be granted. The fact that the wharf will be a large one and of the latest design, and that its position will relieve the necessity of travellers climbing the steep grade from the present wharf, will greatly improve shipping facilities and make the town very easy of access. The wharf which will be three hundred

feet long, will be a public one, thus assuring a landing place for all private boats, etc. Owing to its very rapid growth in importance and to the great amount of business which it transacts with other countries, Bracebridge will doubtless in the near future be appointed a port of entry which will also be a boon to the travelling public.

Bracebridge, from a tourist's standpoint, is probably the best starting point from which to explore the Muskoka river and to obtain supplies for canoeing parties, fishermen and campers. The hotel accommodation is very good, and the traveller will find comfortable quarters here. The town is most agreeably situated on the cliffs, on the river shore, and the neighborhood merits some sojourn from the tourist, to visit its environments.

About four miles from the town, either by the highway or the river, are the High Falls. In the summer, this group of three water falls which are divided from each other by two islands, are best reached from the right bank. The scenery in this vicinity is grand and it will well repay the visitor to take the trip.

A more majestic scene however, is the Great South Falls which are located on the north branch of the river, about three miles above Bracebridge. In the level country when nearing the river, there is nothing to give evidence of the approaching gorge; and from the bridge which spans the river



The Queen's Hotel. Bracebridge.

just above the falls, the scene is beyond compare, looking downward over the mass of tossing, seething foam. As to the geological action which has formed this cleft, it must most probably be classed with those caused by a "fault" or fissure. The chasm is like a cleft, wide at the top and contracting towards the water's edge, at one place to about fifteen feet. On the right bank (the left-hand side looking up), a vast, almost perpendicular, smooth, dark iron-colored rock is intersected by lighter-colored seams, apparently mixtures of quartz and rosy feldspathic crystals. The other bank is different, for here crags of what resembles grey sandstone appear in company with others, dazzling the eye by their micaceous glitter. At the foot of the fall, may be noticed the bank of pebbles consisting of water-worn stones, from the size of an egg to that of a man's head, of varied colors and all worn smooth—many being actually polished. The basins of the torrent show plain signs of the laborious friction of the water and the attendant drift, but beyond these the centuries have left but little mark upon the barriers of the falls. Looking up along the tumultuous snowy mass, the belts of spray hang over the several steps, and sometimes little rainbows enhance the scene. The water is torn into a whitened foam, here and there marked by deep-brown streaks when in deeper spots it sweeps over some smoother stone. On either side, rise the walls of spray-damped solid rock, fringed with young maples and feathered birch, while high above, the dark-green pines and age-browned bridge stand clear-cut out against the sky.

From Bracebridge, expeditions can be made with facility to Baysville and the lake of Bays, returning by canoe down the south branch of the Muskoka river, or to the pretty chain of lakes Vernon, Fairy and Mary, returning from Port Sydney down the north branch.

As mentioned before, the hotel accommodation is very good and rates most reasonable. The Queen's Hotel located at this place, caters to the tourist travel as well as the sportsman and angler. An application to the manager of this hotel will



Bracebridge Wharf.

elicit further information and prices by the day or for an extended period.

The retail stores of Bracebridge are most complete, and all that a traveller requires can be secured here. Among the most prominent establishments, is that of Messrs. Hutchison Brothers, the largest and most complete store of its kind in this town. Their specialty is groceries, provisions, flour, feed, seed and crockery, and they have one of the best assortments in the Muskoka district. The store is operated on sound business principles and on the cash system, guaranteeing to patrons lowest prices and good goods. Its *clientèle* is found through the thousands of visitors to the Highlands of Ontario



The Muskoka Leather Company's Tannery, Bracebridge.

from all over the world, and the large trade from the local purchasers of the country contiguous to Bracebridge and the ever-increasing town business, speak volumes for the methods of this firm. New-comers to the district, make it their headquarters for supplies, and always receive careful and prompt attention. Local and long-distance telephones in connection with the store.

A leading industry of Bracebridge, is recognized as the Muskoka Leather Company, a most extensive concern situated on the river front with a dock frontage of a thousand feet. This manufactory has been established since 1877, and has, during that time, increased its plant and capacity enormously, until to-day it is probably the largest of its kind in Northern Ontario. They carry on a very large

business, the capacity of their plant being in the neighborhood of three million pounds. The company is an up-to-date one, and the management recognizing the methods of modern ways are constantly adding to their plant, machinery that is needed to turn out their output with dispatch, and labor-saving devices that bring the price of their



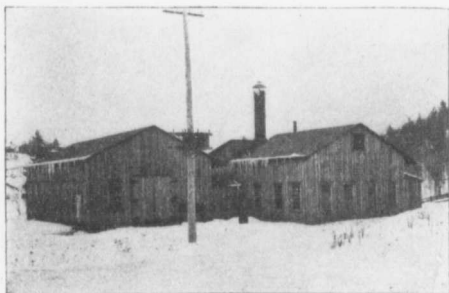
Hutchison Brothers' Store, Bracebridge.

product down to the minimum. Their wares find a market throughout the country, and the class of goods turned out find an enormous sale. The buildings and works alone of this firm, occupy no less than thirty acres of ground, and it is not unlikely that this will be increased in the near future. This establishment is under the able management of Mr. Peter A. Smith, who always takes

pleasure in showing visitors through the plant and furnishing any information desired. Visitors to Bracebridge will find a welcome here, and an interesting hour can be spent in inspecting the works.

One of the most modern plants to be found north of Toronto, which shows an enterprise not often found in the smaller towns, is the Muskoka Foundry Company, of which Mr. M. P. McKay is manager, and whose foundry and machine shops are located here. The general work turned out by this concern, is of a high order and includes all descriptions of iron work in addition to brass fittings and furnishing.

Another important industry that Bracebridge is proud of, is the Hess Furniture Company, a



The Muskoka Foundry Company, Bracebridge.

new concern which has just completed the building of their very handsome factory and which commands a fine view on the west bank of the Muskoka river. Mr. Wm. Hess, the organizer of the new company, has been in the furniture business for twenty-five years, having been located at Listowel, and his thorough knowledge of the business insures for the company a successful career. The factory is five stories high, exclusive of the basement. Electric power is to be used, and all modern and labor-saving machines will be installed for the turning out of their products. The floor space of their building is 42,000 feet, and their factory is one of the principal features of Bracebridge.

With a capacity of fifteen million feet, the J. D.



REPRESENTATIVE HOMES OF BRACEBRIDGE :

- | | |
|--------------------------|-----------------------------|
| 1. Sheriff Bettes. | 4. T. J. Anderson, Esq. |
| 2. W. W. Kinsey, Esq. | 5. Judge Mahaffy. |
| 3. G. H. O. Thomas, Esq. | 6. Late Angus McLeod, M. P. |
| | 7. O. M. Arnold, Esq. |

Shier Lumber Company is one of the largest institutions in the district. It was established sixteen years ago by Mr. J. D. Shier, but two years ago a stock company was formed and the business extended. All grades of lumber, shingles, etc.,



The Hess Furniture Company, Bracebridge.

are turned out. There is a large planing mill, sash-and-door factory, wood turning and moulding departments in connection with the works. Steam power is used. They own the locomotives, tanks, etc., and have a spur of the Grand Trunk Railway running into their premises. They also own docks on the water front, and do a large business in the Muskoka Lake District.

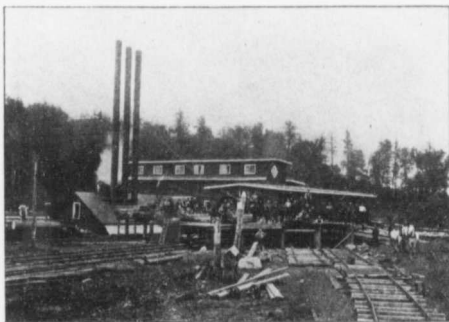
The Dominion Linen Mills, Limited, has been formed for the purpose of manufacturing linens, the first industry of the kind in Canada, and for which the country is in every way eminently adapted. Owing to the natural advantages, it should only be a matter of time until Canada leads the world in linen manufacturing. The advantages obtainable in Bracebridge, namely, the cheapest electric power in Canada, also the special adaptability of the water for bleaching purposes, has placed the company in a position to compete in the home market successfully against foreign products, and also to invade the neighboring American market. As Canada is a large producer of flax grown for flax seed only, the

fibre or stalk has in the past been destroyed, but will now be utilized by this company in the manufacture of their goods.

The Bird Woollen Mills Company, of which Mr. H. J. Bird is president and general manager, is another new corporation which has taken over the business of Mr. H. J. Bird and which has been operated by the former proprietor for thirty years. A new building has been erected to meet the demand of the increase in the volume of business that this company are experiencing. The goods turned out by this firm, are meeting with much favor in commercial circles, and a great future is in store for them. Water power, of which there is a plentiful supply — the factory being located close to the falls — is used for running this extensive plant.

The Brilliant Light Company, Limited, whose plant is also located at Bracebridge, are turning out what is known as "The Mundy," a very safe and brilliant acetylene gas generator made expressly for cottages, hotels, residences and stores. The machine, which is simple and cheap, needs very little space, and has not to be located in a separate gas-house. Full particulars can be had on application to them.

Mr. John M. McMillan, one of the leading merchants of the town, is the proprietor of a well-stocked provision store where the choicest groceries, fresh fruits and the best provisions are obtainable.



Sawmill of the J. D. Shier Lumber Company, Bracebridge.

Those contemplating a visit to this locality, will consider their own interests by writing to Mr. McMillan for his price list, before purchasing.

The Watson Brick Company was formed but a few months ago, and have already the necessary machinery on the grounds for the manufacture of first-quality bricks, and have the material ready for a large output. The firm's yard is on the farm of Mr. John Watson, about a mile out of town, there being a good water power on the premises, with which the machinery will be run. Mr. Watson is the superintendent of the works. The office, as well as a supply of brick, will be kept in town under the direction of Mr. Peter Hutchison, the secretary-treasurer of the company. The clay has been thoroughly tested, showing excellent color



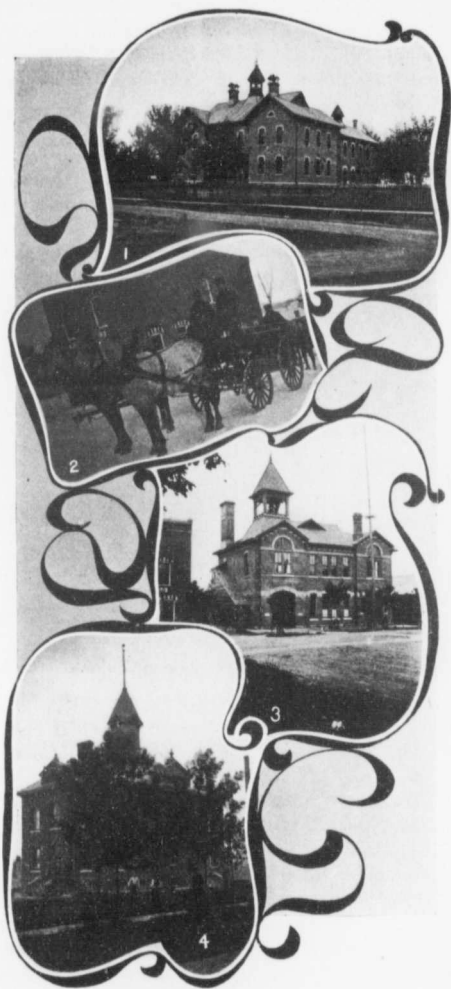
The Dominion Linen Mills (under construction), Bracebridge.

and when burned produces a good hard brick. They employ strictly first-class workmen, and the industry, though new, promises to have an important bearing on the building prospects of the town which of late has been too fast for the supply.

How to reach Bracebridge

From points in the South, passengers reach the Grand Trunk Railway, either by way of Buffalo and Niagara Falls, or by way of Detroit. From each of these points, the trains of the Grand Trunk Railway convey the passengers to Bracebridge.

In the West, from Chicago and points in the western states, passengers are carried over the main line of the Grand Trunk Railway System by way of Port Huron and Toronto, passing through some of the principal cities of the United States and the western part of Ontario.



BRACEBRIDGE'S PUBLIC INSTITUTIONS :

1. Public, High and Model Schools,
2. Fire Wagon and Team,
3. Town Hall,
4. Court House.

From Buffalo, trains are run solid over the Lehigh Valley and Grand Trunk, crossing the Grand Trunk's new single-arch double-track steel bridge over the Niagara river.

From Toronto, fast-express trains are run solid to Bracebridge.

Passengers from Eastern points, such as Quebec, Portland, and intermediate stations, proceed via the main line of the Grand Trunk or Canadian Pacific Railways through Montreal to Toronto, and those from Boston and all New England points,



The Bird Woollen Mill, Bracebridge.

by connecting lines via the same route, and thence on to Bracebridge by the Grand Trunk Railway System.

Tourists from the Maritime Provinces reach the Grand Trunk via the Intercolonial or Canadian Pacific Railways, via Montreal, and proceed over the main line as above described.

From points in the East, and south of Buffalo, including the states of New York, Pennsylvania, West Virginia, Maryland, etc., the route is by way of Niagara Falls, thence Grand Trunk Railway.

For further particulars and all information regarding routes, rates and maps, apply to any agent of the Grand Trunk Railway System.

Manufacturers, Attention!

Unlimited Electric Power, generated by Water Power, to sell at extremely low rates to Manufacturing Industries.

Write to ALEX. C. SALMON,
Town Clerk,
BRACEBRIDGE, ONT.

BRACEBRIDGE COUNCIL, 1903.

Mayor: MR. J. D. SHIER.

Council:

| | |
|---------------|------------------|
| H. S. BOWYER. | G. H. O. THOMAS. |
| H. J. BIRD. | JOHN THOMSON. |
| P. HUTCHISON. | P. A. SMITH. |

Important to Tourists

I have made a specialty
of 'Tourists' Supplies in
FURNITURE, COTS, IRON BEDS, &c.
for over ten years

Anything you need at the Lowest Prices.

Japanese Matting, Floor Oilcloths, Window Shades, etc.

Pianos, Organs and Sewing Machines to Rent.

FUNERAL REQUISITES

Expert Graduate of Champion College of Embalming, Chicago.

W. W. KINSEY

Bracebridge, Ont.

WM. RYAN

PHOTO STUDIO

*The
Leading Photographer
of the District*

A Large Variety of Views High - Class Work

BRACEBRIDGE, ONT.



ABOUT SUPPLIES Last year our sales exceeded largely any previous year for supplies sent to our many lake customers, and the coming season will find us in a better position than ever before. Supplying only the choicest groceries and fresh fruits and the best provisions obtainable. . . .

Those thinking of visiting the Highlands of Ontario, get our list before purchasing.

JNO. M. McMILLAN

Groceries and
Fruits

Manitoba Street
BRACEBRIDGE



The Brilliant Light Co.

Limited
BRACEBRIDGE, Ont.

Sole Manufacturers of the
**MUNDY ACETYLENE
..GAS GENERATOR..**

Safe and Simple
Cheap and Durable
Satisfaction Guaranteed

J. L. FENN, President
CHAS. BARD, Vice-President
W. J. MUNDY, Manager

Write for Catalogue and testimonials to

ALFRED HUNT, Sec.-Treasurer



Most Magnificent Scenic Route in the world, Running through Niagara's Wonderful Gorge

The magnificent Whirlpool Rapids—the Whirlpool—Devil's Hole—Devil's Hole Rapids. Along the water's edge the entire distance.

Wonderful Caves, Rapids, Battle Grounds and Historic Points.

Points of Merit:

LADIES' & GENT'S FURNISHINGS
 DRY GOODS
 BOOTS & SHOES
 GROCERIES & PROVISIONS

We make a specialty of Tourists' Trade
 and will deliver at wharf and prepay
 freight on all bills of dry goods.

Good Goods.
 •
 Direct Importers.
 •
 One price.
 •
 Prompt delivery.
 •
 We buy and sell
 for cash.
 •
 Produce taken.

J. W. NEY & CO., Bracebridge, Ont.

Thomson's Medical Hall

KODAKS

Photo
 Supplies,
 Films,
 &c., &c.

Manitoba Street,
 BRACEBRIDGE

TOILET ARTICLES

PRESCRIPTION
 DEPARTMENT

Bell telephone office, Long Distance.

O. M. ARNOLD

Barrister, Solicitor and Notary Public

BRACEBRIDGE, CANADA

Agents in towns and cities in Canada, United States
 and Foreign countries.

KIRK BROS.

Groceries, Provisions, Confectionery

Flour, Feed

Fruit, Fish

&c., &c.

BRACEBRIDGE, Ont.

Telephone Connection

THE PLACE IN BRACEBRIDGE
TO BUY

Men's and Ladies' Furnishings

DRY GOODS AND BOOTS

... IS ...

CARRUTHER'S Low Price
Cash Store

Caisse's Shaving Parlor

The first need of a smoker is not a match—it is a nice cigar or a good pipe and tobacco.

I am headquarters in this line for fancy goods. Come in and see me.

Where you get good clean work done in every particular.

JOSEPH CAISSE
Barber and Tobacconist



Opposite the Queen's Hotel

BRACEBRIDGE, Ont.

Bracebridge Steam Laundry

LEAVE YOUR LINEN AT THE
BRACEBRIDGE STEAM LAUNDRY

Would be pleased to have your patronage

SATISFACTION GUARANTEED

WM. BUSCHLEN - - Laundryman

The Thomas Co.

Watchmakers
and Stationers

STORES AT

Bracebridge ❧ North Bay ❧ Sturgeon Falls

J. Macready & Co. THE UP-TO-DATE



MENS' AND BOYS'
OUTFITTERS

We Sell Everything for Men and Boys
READY TO WEAR

BRACEBRIDGE - - - - - ONTARIO

BUY YOUR NEXT SUIT FROM



LEMAY



THE TAILOR

HIGH-GRADE WORK

OPPOSITE DOMINION HOTEL
BRACEBRIDGE

BRACEBRIDGE CARRIAGE

Agents for
McLAUGHLIN
CARRIAGES

SHOP

Agents for
FROST & WOOD
IMPLEMENTS

General Blacksmithing

Wood Work of all Kinds, Done Promptly
All Kinds of RIGS Built to Order :: :: ::

MAGEE & BROWN

P. O. Box 83, BRACEBRIDGE

GEO. R. SIMMONS

DEALER IN

Agent for
WELLAND
ACETYLENE
GAS
MACHINE

Bicycles, Guns, Rifles, Ammunition
Cutlery and Sporting Goods
of all kinds

FISHING TACKLE
AND ANGLERS' SUPPLIES

Cameras and Amateur Photographers'
Supplies

PHONOGRAPHS

BRACEBRIDGE, Ont.

MRS. CARSON'S

Meals served at all hours
City Dairy. Ice Cream  ... Restaurant

A FULL LINE OF CHOICE CONFECTIONERY

Ice Cream Sodas served
with Crushed Fruit BRACEBRIDGE, Ont.

HENDERSON & THOMSON

..Souvenirs..  Jewellers
High-grade
Watch Repairing

STATIONERY

FANCY GOODS PERIODICALS

BRACEBRIDGE, Ont.

DR. BRIDGLAND

Physician

and

..Druggist..

Drugs, Toilet Articles, Etc. Prescriptions Carefully
Dispensed

Mail Orders Promptly
Attended to.

BRACEBRIDGE, Ont.

W. A. GILLESPIE

Dealer in

Fine Boots and Shoes

RUBBERS, ETC.



BRACEBRIDGE

Agent



Agent

"Empress Shoe"
For Women

"Hagar Shoe"
For Men and Women

J. L. CAISSE

"Cut  Flowers"

LIGHT LUNCHES.
SODA and
ICE CREAM.

Confectionery

WEBB'S FANCY BREAD and PASTRY

Caterer to Balls, Suppers and Banquets

SUPPLIES FOR PICNIC
PARTIES

BRACEBRIDGE

John Wasdell

BUTCHER

FIRST-CLASS MEATS OF
ALL KINDS IN SEASON

Bracebridge - - - Ontario

JAS. WHITTEN

HARDWARE

BUILDERS AND
CONTRACTORS
SUPPLIES



RAILWAY AND
STEAMBOAT
SUPPLIES

Guns and Ammunition, Fishing Tackle
Camp Utensils, House Furnishings :: ::

FURNITURE AND WALL PAPER

BRACEBRIDGE - - - ONT.

TO CONTRACTORS, FINANCIERS
AND OTHERS

Bracebridge & Trading Lake Railway Co.

Proposed Railway 16 miles in length
connecting the Muskoka Lakes with
Lake of Bays.

\$96,000

in bonuses granted by Dominion and Local Parlia-
ment; power to bond at

\$20,000

per mile.

For information apply to Survey and Plans completed

R. P. PERRY, Secretary,
BRACEBRIDGE, ONT.

THE LEADING STORE

FOR

Boots and Shoes Hats and Caps
Ready-Made Clothing Gent's Furnishings

Dry Goods

The only store in Bracebridge that deals ex-
clusively in the above lines. We buy direct
from manufacturers in nearly all Canadian
lines. We have had nearly 40 years ex-
perience. It will pay you to deal with us.
A share of your patronage is solicited.



W. KIRK

GEO. W. ECCLESTONE

Bracebridge, Ont.

HARDWARE AND
IRON MERCHANT

Plumbing and Furnace Work

"We either carry it in stock,
we get it, or it isn't made."

Agent for
SHERWIN-WILLIAMS PAINTS

The Bracebridge Hardware

HAVE A
FINE LINE

AND
Furniture Store

IN
FURNITURE

Tourists' . . .
Supplies . . .
Hardware . . .
Stoves . . .
Tinware . . .
Ready-mixed
Paints, Oils . .
Dry Colors . .
Fishing . . .
Tackle, Tents
Etc., Etc. . .

GOODS
DELIVERED
TO BOATS
AND TRAIN

Camp Stools .
Chairs
Stretchers . .
Mattresses . .
Springs
Iron Beds . . .
Bedroom
Suites
and other lines
too numerous to
mention

J. L. Fenn, Sons & Co.
BRACEBRIDGE, ONT.

BALLANTYNE & Co.

BRACEBRIDGE

THE
Up-To-Date
Tailors



of Muskoka, carry the
largest and best as-
sorted stock of

*Imported and
Canadian
Woolens*

in the District, and
from 25 to 50 p.c. lower
than American prices.

GEO.
W.
SIBBETT

AGENT FOR
PELEE ISLAND
WINE, . . .

DEALER IN
FOREIGN AND
DOMESTIC

Wines, Liquors,
Ales, Porter and
Cigars..

MAIL
ORDERS
FROM
UP
THE LAKES
FILLED
SAME
DAY



Bracebridge

Lock Box 82