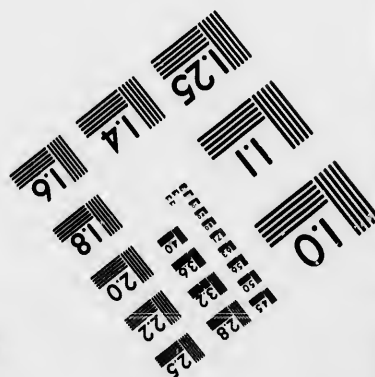
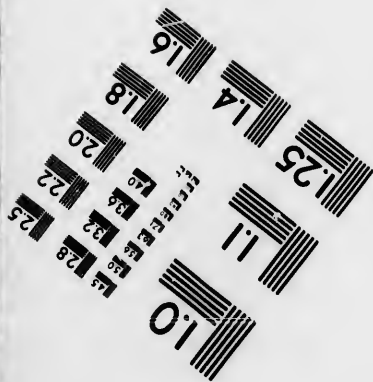
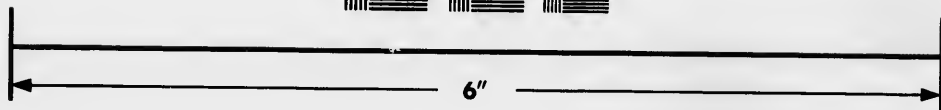
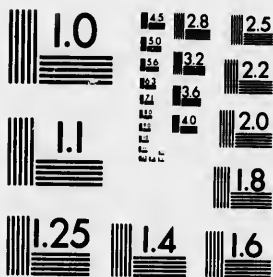


**IMAGE EVALUATION
TEST TARGET (MT-3)**



**Photographic
Sciences
Corporation**

23 WEST MAIN STREET
WEBSTER, N.Y. 14580
(716) 872-4503

**CIHM
Microfiche
Series
(Monographs)**

**ICMH
Collection de
microfiches
(monographies)**



Canadian Institute for Historical Microreproductions / Institut canadien de microreproductions historiques

© 1993

Technical and Bibliographic Notes / Notes techniques et bibliographiques

The Institute has attempted to obtain the best original copy available for filming. Features of this copy which may be bibliographically unique, which may alter any of the images in the reproduction, or which may significantly change the usual method of filming, are checked below.

L'Institut a microfilmé le meilleur exemplaire qu'il lui a été possible de se procurer. Les détails de cet exemplaire qui sont peut-être uniques du point de vue bibliographique, qui peuvent modifier une image reproduite, ou qui peuvent exiger une modification dans la méthode normale de filmage sont indiqués ci-dessous.

- | | |
|--|---|
| <input checked="" type="checkbox"/> Coloured covers/
Couverture de couleur | <input type="checkbox"/> Coloured pages/
Pages de couleur |
| <input type="checkbox"/> Covers damaged/
Couverture endommagée | <input type="checkbox"/> Pages damaged/
Pages endommagées |
| <input type="checkbox"/> Covers restored and/or laminated/
Couverture restaurée et/ou pelliculée | <input type="checkbox"/> Pages restored and/or laminated/
Pages restaurées et/ou pelliculées |
| <input type="checkbox"/> Cover title missing/
Le titre de couverture manque | <input type="checkbox"/> Pages discoloured, stained or foxed/
Pages décolorées, tachetées ou piquées |
| <input type="checkbox"/> Coloured maps/
Cartes géographiques en couleur | <input checked="" type="checkbox"/> Pages detached/
Pages détachées |
| <input checked="" type="checkbox"/> Coloured ink (i.e. other than blue or black)/
Encre de couleur (i.e. autre que bleue ou noire) | <input type="checkbox"/> Showthrough/
Transparence |
| <input checked="" type="checkbox"/> Coloured plates and/or illustrations/
Planches et/ou illustrations en couleur | <input checked="" type="checkbox"/> Quality of print varies/
Qualité inégale de l'impression |
| <input type="checkbox"/> Bound with other material/
Relié avec d'autres documents | <input type="checkbox"/> Continuous pagination/
Pagination continue |
| <input type="checkbox"/> Tight binding may cause shadows or distortion
along interior margin/
La reliure serrée peut causer de l'ombre ou de la
distorsion le long de la marge intérieure | <input type="checkbox"/> Includes index(es)/
Comprend un (des) index |
| <input type="checkbox"/> Blank leaves added during restoration may appear
within the text. Whenever possible, these have
been omitted from filming/
Il se peut que certaines pages blanches ajoutées
lors d'une restauration apparaissent dans le texte,
mais, lorsque cela était possible, ces pages n'ont
pas été filmées. | Title on header taken from: /
Le titre de l'en-tête provient: |
| <input type="checkbox"/> Additional comments: /
Commentaires supplémentaires: | <input type="checkbox"/> Title page of issue/
Page de titre de la livraison |
| | <input type="checkbox"/> Caption of issue/
Titre de départ de la livraison |
| | <input type="checkbox"/> Masthead/
Générique (périodiques) de la livraison |

This item is filmed at the reduction ratio checked below/
Ce document est filmé au taux de réduction indiqué ci-dessous.

10X	14X	18X	22X	26X	30X
<input type="checkbox"/>	<input type="checkbox"/>	<input checked="" type="checkbox"/>	<input type="checkbox"/>	<input type="checkbox"/>	<input type="checkbox"/>
12X	16X	20X	24X	28X	32X

The copy filmed here has been reproduced thanks to the generosity of:

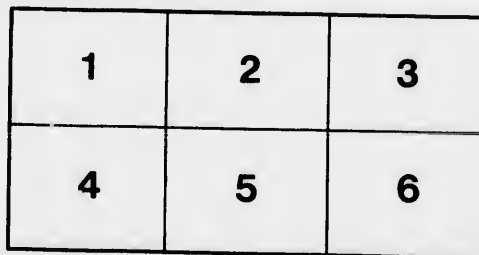
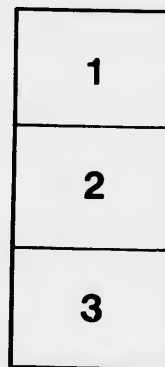
National Library of Canada

The images appearing here are the best quality possible considering the condition and legibility of the original copy and in keeping with the filming contract specifications.

Original copies in printed paper covers are filmed beginning with the front cover and ending on the last page with a printed or illustrated impression, or the back cover when appropriate. All other original copies are filmed beginning on the first page with a printed or illustrated impression, and ending on the last page with a printed or illustrated impression.

The last recorded frame on each microfiche shall contain the symbol \rightarrow (meaning "CONTINUED"), or the symbol ∇ (meaning "END"), whichever applies.

Maps, plates, charts, etc., may be filmed at different reduction ratios. Those too large to be entirely included in one exposure are filmed beginning in the upper left hand corner, left to right and top to bottom, as many frames as required. The following diagrams illustrate the method:



L'exemplaire filmé fut reproduit grâce à la générosité de:

Bibliothèque nationale du Canada

Les images suivantes ont été reproduites avec le plus grand soin, compte tenu de la condition et de la netteté de l'exemplaire filmé, et en conformité avec les conditions du contrat de filmage.

Les exemplaires originaux dont la couverture en papier est imprimée sont filmés en commençant par le premier plat et en terminant soit par la dernière page qui comporte une empreinte d'impression ou d'illustration, soit par le second plat, selon le cas. Tous les autres exemplaires originaux sont filmés en commençant par la première page qui comporte une empreinte d'impression ou d'illustration et en terminant par la dernière page qui comporte une telle empreinte.

Un des symboles suivants apparaîtra sur la dernière image de chaque microfiche, selon le cas: le symbole \rightarrow signifie "A SUIVRE", le symbole ∇ signifie "FIN".

Les cartes, planches, tableaux, etc., peuvent être filmés à des taux de réduction différents. Lorsque le document est trop grand pour être reproduit en un seul cliché, il est filmé à partir de l'angle supérieur gauche, de gauche à droite, et de haut en bas, en prenant le nombre d'images nécessaire. Les diagrammes suivants illustrent la méthode.

qu'il
cet
de vue
je
tion
és

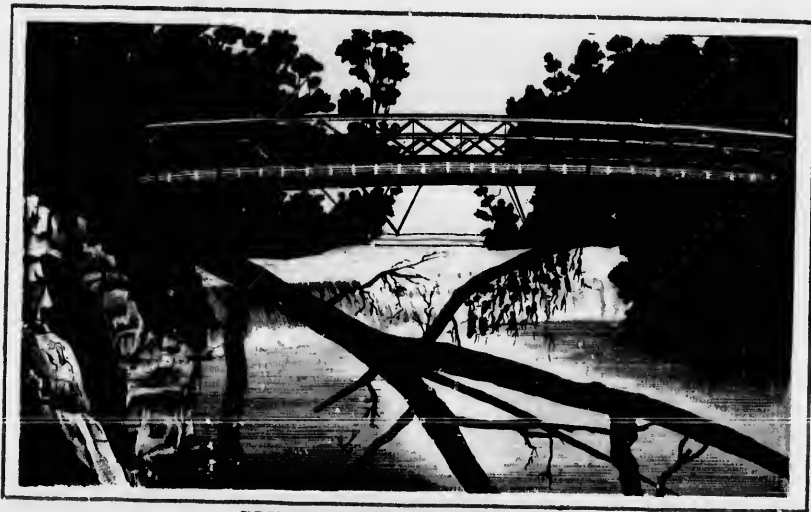


30 VIEWS
OF
NIAGARA FALLS
AND
TORONTO

Copyright W. B. P. & Co.



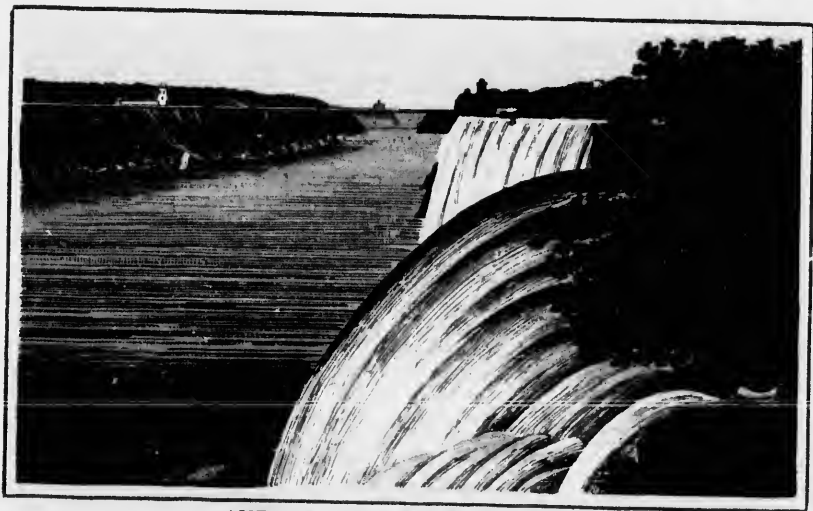
MAID OF THE MIST IN WHIRLPOOL RAPIDS.



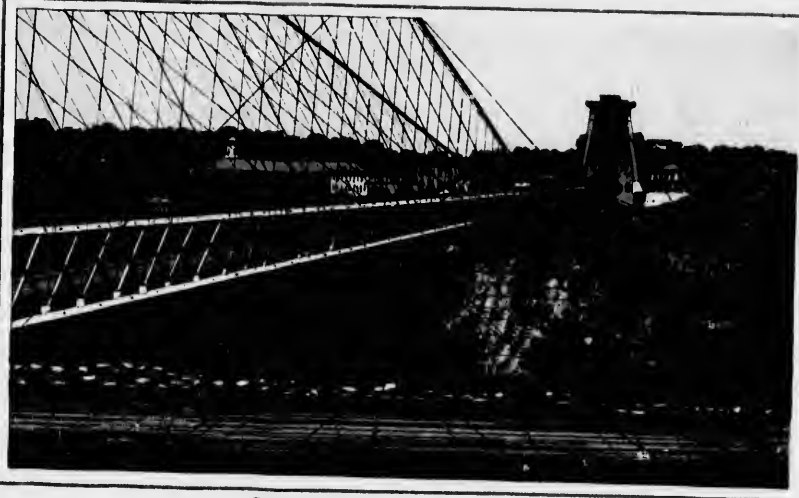
BRIDGE TO FIRST SISTER ISLAND.



AMERICAN FALL AND VILLAGE OF NIAGARA FALLS.



AMERICAN FALL FROM GOAT ISLAND.



THE NEW SUSPENSION BRIDGE



BOTH FALLS FROM NEW SUSPENSION BRIDGE.



PROSPECT POINT.



BIRD'S EYE VIEW OF HORSESHOE FALL.



REMAINS OF TABLE ROCK-NIAGARA.



GENERAL VIEW OF NIAGARA FROM CANADA.



WHIRLWIND BRIDGE-CAVE OF THE WINDS AND ROCK OF AYES.



RAILWAY SUSPENSION BRIDGE.



AYES.



INTERIOR OF RAILWAY SUSPENSION BRIDGE
825 FEET LONG.



WHIRLPOOL RAPIDS, AND PLACE OF DEATH OF CAPT. WEBB.



VIEW FROM THE BRIDGE & SISTER ISLAND.



EBB.



GRAND TIGHT ROPE ASCENSION NIAGARA FALLS.



BRIDGE TO BURNING SPRINGS AND CLARK HILL ISLANDS.



SIGNORINA SPELTERINA
IN HER HIGH ROPE PERFORMANCE.



WINTER WONDERS IN THE PARK.



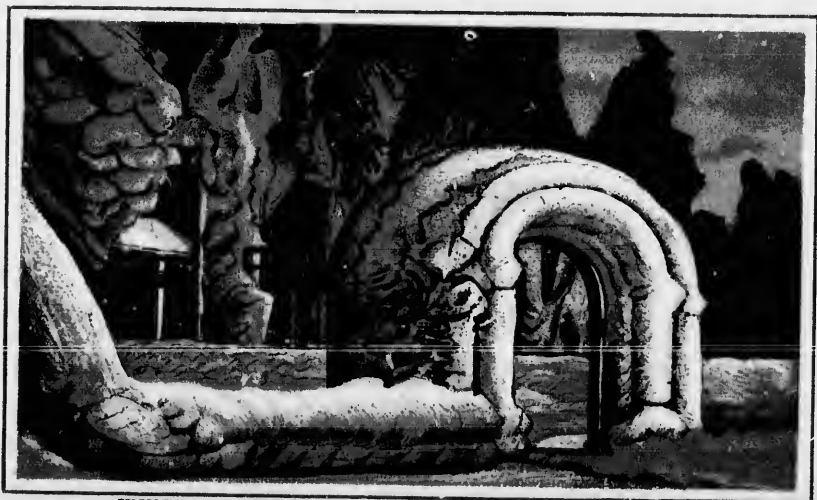
VIEW OF THE ICE MOUNTAIN AND WINTER SPORTS 1875.



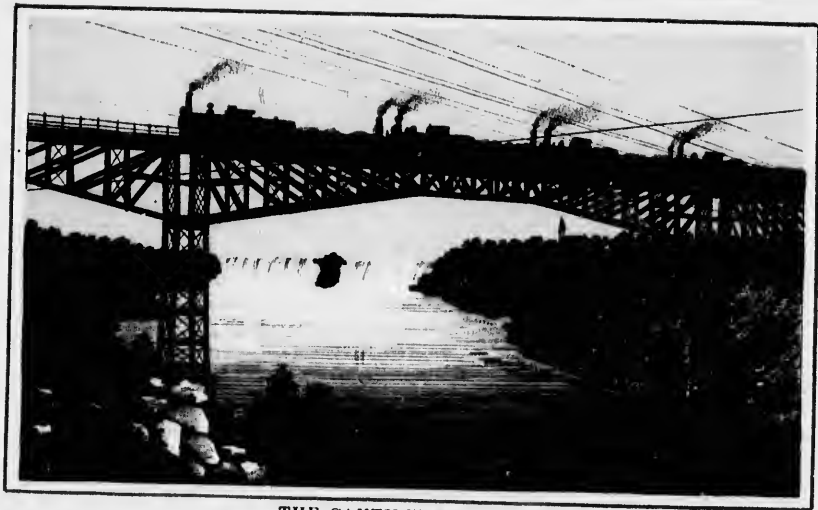
THE PARK.



CAPT. WEBB'S FATAL SWIM.



WINTER WONDERS OF 1875. ICE ARCH PROSPECT PARK.



THE CANTILEVER BRIDGE.



NIAGARA FALLS AND VICINITY.



INDUSTRIAL EXHIBITION OF TORONTO.



TORONTO HARBOUR.



**ISLAND OPPOSITE TORONTO WITH HOME
OF EDWARD HANLAN THE CHAMPION SCULLER OF THE WORLD.**



TORONTO HARBOUR WINTER SCENE. ICE BOATING AT HANLANS.



LD.



NG.



CUSTOM HOUSE.



UNIVERSITY, TORONTO.

Height
of water
water pas
sed and 1

overhang

MUSE

CLAR
SPRING.

RAILV
miles bel
S. E. of
and Carri
the water

THE V
below the
it was in
Whirlpool
timely en

THE C
of the kin
Central an
Dec. 20/18
24 Cars of
above the
Chasm 87
Rails are
wers are
feet high.

LUNDY
les west o
fought Jul

BROCK
the Falls.

MEMOR
of the Mi
June 15th
drowned J
Eight rope
Father Her
carriages 1
is a corrup
meaning, M

NIAGARA FALLS AND VICINITY. 500

CANADA-SIDE.

Places of interest.

HORSE SHOE FALLS.

Height 158 feet — width 2376 feet. Sheet of water in centre 20 feet thick. Amount of water passing over every minute Thirteen hundred and fifty millions of cubic feet.

TABLE ROCK

Overhangs the cauldron close to the Fall.

MUSEUM a few feet from Table Rock.

CLARKHILL ISLANDS AND BURNING SPRING. Half a mile from Table Rock.

RAILWAY SUSPENSION BRIDGE. Two miles below the Falls built by Great-Western B. R. of Canada in 1855 is for both Railway and Carriage use, 825 feet long, 200 feet above the water, depth of water underneath 250 feet.

THE WHIRLPOOL (See view). $3\frac{1}{4}$ Miles below the Falls or $\frac{3}{4}$ below the Susp. Bridge it was in trying to swim these Rapids and Whirlpool that Captain Webb came to an untimely end in 1838.

THE CANTILEVER BRIDGE. The only one of the kind in the world—built for the N. Y. Central and Michigan Central Railroads—opened Dec. 20/1883 and tested by 20 Locomotives and 24 Cars of Gravel. Its location is about 300 feet above the old Suspension Bridge—spanning a Chasm 870 feet between the Bluffs and the Rails are 240 feet above the water. The Towers are of steel 132 feet on Stone Piers 39 feet high.

LUNDY'S LANE BATTLE GROUND $1\frac{1}{2}$ miles west of the Falls. Battle of Lundy's Lane fought July 25th 1814.

BROCK'S MONUMENT seven miles below the Falls. Erected in 1853. Height 185 feet.

MEMORANDA. Sam Patch's leap 1829. „Maid of the Mist“ passed through the Whirlpool June 15th 1861. Francis Abbot (the hermit) drowned June 1831. Blondin first crossed on tight rope 1859. The first white visitor — Father Hennepin in 1678. Rates of fare for carriages 1.50 per hour. The name „Niagara“ is a corruption of the Indian word „Onyagara“ meaning „Mighty, wonderful, thundering“ water.

AMERICAN-SIDE.

AMERICAN FALLS.

Height 164 feet. Width quarter of a mile — Amount of water passing over every minute one hundred and fifty million cubic feet.

GOAT ISLAND GROUP.

Consisting of Goat Island. Bach Island. Luna Island. Terrapin Rocks. Three Sisters Island. Hermits Cascade. Cave of the winds. Biddle-stairs &c. The Islands Contain over 60 acres and are Connected with the Main-land and each other by seven bridges. Goat Island is situated at the brink of the precipice and separates the American from the Canadian Falls.

PROSPECT PARK.

Contains about seven acres and situated at the edge of the American Falls: The principal features of the park are Prospect Point, Ferry House and Inclined Railway. Shadow of the Rock. Hurricane bridge. Ferry to Canada. Electric light and Art Gallery.

NEW SUSPENSION BRIDGE.

For Carriages and foot passengers about three fourths of a mile below the Falls—length 1268 feet and 190 feet above the water—depth of water underneath 150 feet.

WHIRLPOOL RAPIDS AND DOUBLE ELEVATOR.

$2\frac{1}{4}$ miles below the Falls—width of River here only 300 feet and depth estimated 320 feet. Fully fifteen hundred million Cubicfeet of water rush through this Gorge every Minute at the rate of nearly 30 miles an hour. A double Elevator — Cost 20000 Dollars and worked by water power — conveys visitors from above to the water edge.

DEVIL'S HOLE.

Three and one half miles from Falls.

INDIAN VILLAGE.

Eight miles from Falls.

