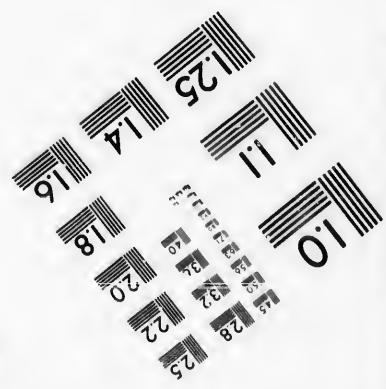
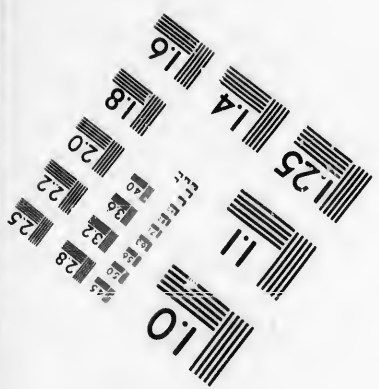
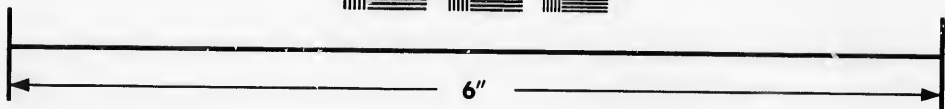
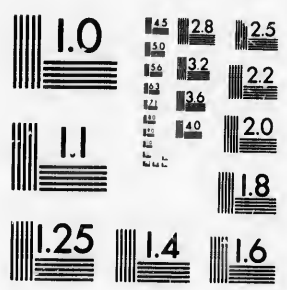


**IMAGE EVALUATION
TEST TARGET (MT-3)**



**Photographic
Sciences
Corporation**

23 WEST MAIN STREET
WEBSTER, N.Y. 14580
(716) 872-4503

1.8
2.0
2.2
2.5
2.8
3.2
3.6
4.0

**CIHM/ICMH
Microfiche
Series.**

**CIHM/ICMH
Collection de
microfiches.**



Canadian Institute for Historical Microreproductions / Institut canadien de microreproductions historiques

10
51

© 1986

Technical and Bibliographic Notes/Notes techniques et bibliographiques

The Institute has attempted to obtain the best original copy available for filming. Features of this copy which may be bibliographically unique, which may alter any of the images in the reproduction, or which may significantly change the usual method of filming, are checked below.

L'Institut a microfilmé le meilleur exemplaire qu'il lui a été possible de se procurer. Les détails de cet exemplaire qui sont peut-être uniques du point de vue bibliographique, qui peuvent modifier une image reproduite, ou qui peuvent exiger une modification dans la méthode normale de filmage sont indiqués ci-dessus.

- | | |
|--|--|
| <input type="checkbox"/> Coloured covers/
Couverture de couleur | <input checked="" type="checkbox"/> Coloured pages/
Pages de couleur |
| <input type="checkbox"/> Covers damaged/
Couverture endommagée | <input checked="" type="checkbox"/> Pages damaged/
Pages endommagées |
| <input type="checkbox"/> Covers restored and/or laminated/
Couverture restaurée et/ou pelliculée | <input type="checkbox"/> Pages restored and/or laminated/
Pages restaurées et/ou pelliculées |
| <input type="checkbox"/> Cover title missing/
Le titre de couverture manque | <input checked="" type="checkbox"/> Pages discoloured, stained or foxed/
Pages décolorées, tachetées ou piquées |
| <input type="checkbox"/> Coloured maps/
Cartes géographiques en couleur | <input type="checkbox"/> Pages detached/
Pages détachées |
| <input checked="" type="checkbox"/> Coloured ink (i.e. other than blue or black)/
Encre de couleur (i.e. autre que bleue ou noire) | <input checked="" type="checkbox"/> Showthrough/
Transparence |
| <input type="checkbox"/> Coloured plates and/or illustrations/
Planches et/ou illustrations en couleur | <input type="checkbox"/> Quality of print varies/
Qualité inégale de l'impression |
| <input type="checkbox"/> Bound with other material/
Relié avec d'autres documents | <input type="checkbox"/> Includes supplementary material/
Comprend du matériel supplémentaire |
| <input type="checkbox"/> Tight binding may cause shadows or distortion
along interior margin/
La reliure serrée peut causer de l'ombre ou de la
distorsion le long de la marge intérieure | <input type="checkbox"/> Only edition available/
Seule édition disponible |
| <input type="checkbox"/> Blank leaves added during restoration may
appear within the text. Whenever possible, these
have been omitted from filming/
Il se peut que certaines pages blanches ajoutées
lors d'une restauration apparaissent dans le texte,
mais, lorsque cela était possible, ces pages n'ont
pas été filmées. | <input type="checkbox"/> Pages wholly or partially obscured by errata
slips, tissues, etc., have been refilmed to
ensure the best possible image/
Les pages totalement ou partiellement
obscurcies par un feuillet d'errata, une pelure,
etc., ont été filmées à nouveau de façon à
obtenir la meilleure image possible. |
| <input type="checkbox"/> Additional comments:/
Commentaires supplémentaires: | |

This item is filmed at the reduction ratio checked below/
Ce document est filmé au taux de réduction indiqué ci-dessous.

10X	14X	18X	22X	26X	30X
<input type="checkbox"/>	<input type="checkbox"/>	<input type="checkbox"/>	<input checked="" type="checkbox"/>	<input type="checkbox"/>	<input type="checkbox"/>
12X	16X	20X	24X	28X	32X

The copy filmed here has been reproduced thanks to the generosity of:

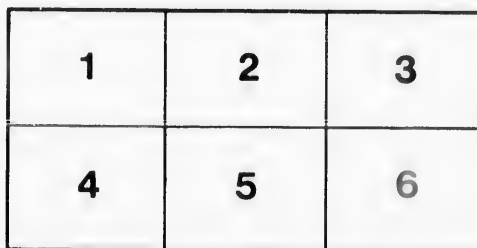
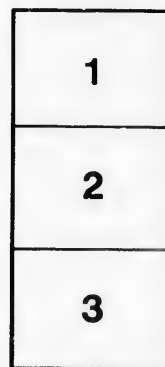
Bibliothèque nationale du Québec

The images appearing here are the best quality possible considering the condition and legibility of the original copy and in keeping with the filming contract specifications.

Original copies in printed paper covers are filmed beginning with the front cover and ending on the last page with a printed or illustrated impression, or the back cover when appropriate. All other original copies are filmed beginning on the first page with a printed or illustrated impression, and ending on the last page with a printed or illustrated impression.

The last recorded frame on each microfiche shall contain the symbol \rightarrow (meaning "CONTINUED"), or the symbol ∇ (meaning "END"), whichever applies.

Maps, plates, charts, etc., may be filmed at different reduction ratios. Those too large to be entirely included in one exposure are filmed beginning in the upper left hand corner, left to right and top to bottom, as many frames as required. The following diagrams illustrate the method:



L'exemplaire filmé fut reproduit grâce à la générosité de:

Bibliothèque nationale du Québec

Les images suivantes ont été reproduites avec le plus grand soin, compte tenu de la condition et de la netteté de l'exemplaire filmé, et en conformité avec les conditions du contrat de filmage.

Les exemplaires originaux dont la couverture en papier est imprimée sont filmés en commençant par le premier plat et en terminant soit par la dernière page qui comporte une empreinte d'impression ou d'illustration, soit par le second plat, selon le cas. Tous les autres exemplaires originaux sont filmés en commençant par la première page qui comporte une empreinte d'impression ou d'illustration et en terminant par la dernière page qui comporte une telle empreinte.

Un des symboles suivants apparaîtra sur la dernière image de chaque microfiche, selon le cas: le symbole \rightarrow signifie "A SUIVRE", le symbole ∇ signifie "FIN".

Les cartes, planches, tableaux, etc., peuvent être filmés à des taux de réduction différents. Lorsque le document est trop grand pour être reproduit en un seul cliché, il est filmé à partir de l'angle supérieur gauche, de gauche à droite, et de haut en bas, en prenant le nombre d'images nécessaire. Les diagrammes suivants illustrent la méthode.



P

M

SH

*Nam
adolescen
præben
tur.*

I cons
inherent
and disc

JOURNAL
OF
S. NEILSON'S
PROGRESS IN EDUCATION,

AT

MR. WILKIE'S SCHOOL, QUEBEC;

FROM MARCH 1, TO DECEMBER 31, 1815.

SHEWING, IN AN OBVIOUS MANNER, HIS ATTAINMENTS AND CONDUCT IN SCHOOL
EVERY DAY DURING THAT PERIOD.

*Nam cætera neque temporum sunt, neque ætatum omnium, neque locorum: at hæc studia
adolescens alunt, senectutem oblectant, secundas res ornant, adversis perfugium ac solatium
prebent; delectant domi, non impediunt foris; pernoctant nobiscum, peregrinantur, rusticantur.*
CICERO PRO ARCHIA.

I consider a human soul without education, like marble in the quarry, which shows none of its
inherent beauties, till the skill of the polisher, fetches out the colours, makes the surface shine,
and discovers every ornamental cloud, spot, or vein that runs through the body of it.

ADDISON.

QUEBEC:

PRINTED BY JOHN NEILSON, 3, MOUNTAIN STREET.
1815.

RES
AD
93

15

T
year
lum

site
has
API
ink

Sch
ent
is

on
to
mo
sta
ed
ma

see

1990
1991
1992
1993
1994
1995
1996
1997
1998
1999
2000
2001
2002
2003
2004
2005
2006
2007
2008
2009
2010
2011
2012
2013
2014
2015
2016
2017
2018
2019
2020
2021
2022
2023
2024
2025
2026
2027
2028
2029
2030

EXPLANATION OF THE JOURNAL.



THE Journal consists of twelve pages, one being devoted to each month in the year. Each page is a Journal for one month, and is divided into twenty-three columns, the purpose of each of which is sufficiently indicated by the title on the top of it.

The attainments and conduct of the Scholar are indicated by marks placed opposite to the day of the month, and directly under that branch of study in which he has excelled, or been found negligent. The marks are of two kinds, to denote APPROBATION OR DISAPPROBATION, the former marks being made with *common* ink, and the latter with *red*.

Regular Attendance.

To show that the Student has been present at the hour appointed for opening the School, the *mark* consists of a perpendicular stroke or one nearly so, in the column entitled *Attendance*, and under the number at the top, by which the hour of meeting is denoted.

Good Preparation.

To show that a Student has given a good account of any lesson, the mark mentioned above is placed in the column bearing the title of that branch of study. And to render the information on this subject as minute and satisfactory as possible, the more important studies are subdivided into their various branches, so that it is instantly known in what part of the Lesson, eminence or deficiency has been discovered. Thus, the Latin department has separate columns appropriated to Latin Grammar, Translation, Etymology and Syntax, making Latin and Prosody.

Precedence,

The Scholar who is Captain of his Class, has the usual mark of approbation crossed by a horizontal stroke.

LATENESS.

Lateness.

When a young Gentleman comes to School half an hour or more, after the hour appointed for its opening, and does not produce a written account of his lateness from his Parent or Guardian, the mark of disapprobation is a perpendicular stroke, or one nearly so, made with red ink in the column having the hour of meeting at the top.

Bad Preparation.

When a Scholar is found unprepared in any Lesson, a mark of the same kind and colour as the last mentioned, is made in the proper column.

Improper Conduct.

Instances of IMPROPER CONDUCT are stigmatized by a cross made with red ink, in the column appropriated to that purpose. This mark is affixed to grosser faults; such as, swearing, fighting, impertinence, reproachful language, losing books, injuring books, &c.

Inattention.

Slighter offences, such as repeating too loud, getting from the seat unnecessarily, forgetting books, &c. are marked by a single red stroke in the same column, under the general name of INATTENTION.

Parents' Inspection.

The Parent or Guardian is to indicate, every evening or morning, his having seen the Journal of the preceding day, by making a stroke in the last column, entitled PARENTS' INSPECTION, with common ink. This mark, it is expected, will be made by the Father; or, in his absence or necessary prevention, by the Mother; and in her absence or prevention, by any person who may have charge of the young Gentleman for the time.

HOLIDAYS.

Holidays.

When a Holiday takes place, it is indicated by the letter H. in the column next to the day of the week.

Censor.

The duty of CENSOR FOR THE DAY, is to be performed by each of the senior Students in his turn, and on that day he is not examined on any Lesson, except on the Exercise given out to be written at home the preceding evening. His holding this office is designated by the letter C. placed in the column entitled Latin, ~~week~~, and no marks of approbation are to be expected on that day, except for regular attendance, and the above mentioned Exercise.

Such are the marks employed in this Journal, to enable the Parent or Guardian to appreciate the daily attainments and conduct of his Son or *Protegé*. To prevent mistakes, a Summary of these Explanations is inserted in the page facing each page of the Journal.

It is proper to state further, that the Branches which any Boy is studying, are stated in writing. And, if he commences any other, or leaves off any one, that circumstance is notified at the time it takes place, on the page opposite to the Journal for that month.

The days on which every subject is studied, are mentioned at the top of the column appropriated to it, that Parents may know when to expect the marks of approbation or disapprobation concerning it.

The marks are inserted by the Master or his Assistant, or by the Captain of each Class, under the Master's inspection. A Check Book on the whole proceedings, is kept in School.

ADVANTAGES OF THE JOURNAL.



The advantages which the Student must derive from this Journal, are so obvious, that it seems hardly necessary to specify them. Two of the principal objects attained by it, are the establishment of a perfect understanding between the Teacher and the Parents ;

Parents; and the facility which it affords for a fair and impartial distribution of Prizes.

To serve the former of those purposes the more effectually, a column is appropriated for the daily insertion of the Parent or Guardian's mark, with a view to show that the Journal has been inspected at home, and to secure its being regularly examined there.

In the decision of Prizes, the best will be adjudged to those who have the greatest number of marks of *Approbation*, after deducting all those for *Disapprobation*. And the black Cross, or mark of *Precedence* in any Class, is to be held equivalent to two marks for *Regular Attendance* or *Good Preparation*; and, on the other hand, the red Cross, or mark of *Improper Conduct*, is to be held equivalent to ten marks for *Lateness*, *Bad Preparation* or *Inattention*, and will balance ten marks of *Approbation*. Suppose, for example, a Boy to have 36 marks of regular attendance, 153 of Good Preparation, and 12 of Precedence in his Class, 29 of Lateness, 41 of Bad Preparation, 15 of Inattention, and 2 of Improper Conduct; then, every mark used in the Journal being here introduced, for the purpose of illustration, his Account will stand thus:

Regular Attendance.....	36.....	36
Good Preparation.....	153.....	153
Precedence.....	12 × 2.....	24
		<hr/>
Total of Marks of Approbation.....		213
Lateness.....	29.....	29
Bad Preparation.....	41.....	41
Inattention.....	15.....	15
Improper Conduct 2 × 10.....		20
		<hr/>
Total Marks of Disapprobation - - - - -		105
Excess of Marks of Approbation - - - - -		108.

Constituting his claim to a Prize, and to be compared with }
 the excess which others may have, when calculated in the same }
 manner.

MARKS

Tri-

ia-
nat
ed

est

m.

to

nd,

rks

Ap-

ce,

of

rk

Ac-

RKS

Marks used in the Journal.

The Marks of Approbation are made with common Ink.

Presence at the hour of Meeting, thus,	I
Good Preparation, thus	- - - I
Precedence in the Class	- - - +

The Marks of Disapprobation are made with red Ink.

Lateness without cause, thus,	- - - I
Bad Preparation, thus,	- - - I
Inattention, thus,	- - - I
Improper Conduct, thus,	- - - +

Subjects studied this Month.

<p style="font-size: 2em; margin-left: 2em;">Mathematics</p> <p style="font-size: 2em; margin-left: 2em;">Action & Forces</p> <p style="font-size: 2em; margin-left: 2em;">Greek</p> <p style="font-size: 2em; margin-left: 2em;">Latin</p> <p style="font-size: 2em; margin-left: 2em;">Etymology</p> <p style="font-size: 2em; margin-left: 2em;">Translation</p> <p style="font-size: 2em; margin-left: 2em;">Making Latin</p> <p style="font-size: 2em; margin-left: 2em;">Prose</p> <p style="font-size: 2em; margin-left: 2em;">Writing</p> <p style="font-size: 2em; margin-left: 2em;">(Orations)</p>	<p>1</p> <p>2 /</p> <p>3 /</p> <p>4 /</p> <p>5 /</p> <p>6 /</p> <p>7</p> <p>8</p> <p>9</p> <p>10</p> <p>11 /</p> <p>12 /</p> <p>13</p> <p>14</p> <p>15 /</p> <p>16 /</p> <p>17</p> <p>18 /</p> <p>19</p> <p>20 /</p> <p>21 /</p> <p>22</p> <p>23 /</p> <p>24</p> <p>25 /</p> <p>26</p> <p>27 /</p> <p>28</p> <p>29</p> <p>30</p> <p>31</p>
---	--

31

Handwritten text in cursive script, possibly a signature or name, appearing in three distinct sections on the right side of the page. The top section is the most legible, showing a large initial 'S' followed by a name that appears to be 'William'. The middle section is less legible, and the bottom section is very faint and partially obscured by a horizontal line.

Vertical markings on the left edge of the page, consisting of several short, parallel diagonal lines.

Small handwritten markings or scribbles at the bottom left corner of the page.

Day of the Month.

Day of the Week.

- 1
- 2
- 3
- 4
- 5
- 6
- 7
- 8
- 9
- 10
- 11
- 12
- 13
- 14
- 15
- 16
- 17
- 18
- 19
- 20
- 21
- 22
- 23
- 24
- 25
- 26
- 27
- 28
- 29
- 30
- 31

Pulson's JOURNAL

Day of the Month.	Day of the Week.	Attendance.		LATIN. Monday, Tuesday, Thursday & Friday.				GREEK. Every day.	MATHEMATICS Every day ex- cept Saturday.	GEOGRAPHY. Tuesday, Thurs- day & Saturday	ARITHMETIC every day		WRITING. Every day.	ENGLISH LANGUAGE.				EVIDENCES of Natural and Revealed Religion, Sunday.	Inattention and improper conduct.	Parent's Inspection.
				LATIN GRAMMAR.	TRANSLATION.	ETYMOLOGY.	MAKING LATIN.				PROSODY.	Questions		Cyphering Book.	READING every Day.	ORTHOGRAPHY Every day.	GRAMMAR Mond. Wed. Fr			
1																				
2	Mon	/		+	+	/	+	/	/				//							1/2
3	Tue	/	/	+	+	+	+	/	+											1/2
4	Wed	/											/							1/2
5	Thu	/	/																+	1/2
6	Fri	/	/	+	+	+	+	/	/											1/2
7	Sat	/	/	+	+	+	+	//	+											1/2
8	Sun	/	/	+	+		+	//	+											1/2
9	Mon	/	//	+	+	/	+	/	+											1/2
10	Tue	/	//	+	+	+	+	/	+											1/2
11	Wed	/	/					/											/	1/2
12	Thu	/	/																+	1/2
13	Fri	/	//	+	+	/	+	/	+		/									1/2
14	Sat	/	//	+	+	/	+	/	+			//								1/2
15	Sun	/	/					/	+											1/2
16	Mon	/	/	+	+	+	/	/	+											1/2
17	Tue	/											/							1/2
18	Wed	/																	/	1/2
19	Thu	/	/																	1/2
20	Fri	/	/	+	+	//	+	/	+											1/2
21	Sat	/	/	+	+	+	+	//	+											1/2
22	Sun	/	/					//	+											1/2
23	Mon	/																		1/2
24	Tue	/																		1/2
25	Wed	/																		1/2
26	Thu	/																		1/2
27	Fri	/																		1/2
28	Sat	/																		1/2
29	Sun	/																		1/2
30	Mon	/	/	+	+	+	+	/	+											1/2
31	Tue	/	/	+	+	+	+	/	+											1/2

Days etc. V 186

Good Pre. in a. out

Marks used in the Journal.

The Marks of Approbation are made with common Ink.

Presence at the hour of Meeting, thus,	I
Good Preparation, thus - - -	I
Precedence in the Class - - -	+

The Marks of Disapprobation are made with red Ink.

Lateness without cause, thus, - - -	I
Bad Preparation, thus, - - -	I
Inattention, thus, - - -	I
Improper Conduct, thus, - - -	+

Subjects studied this Month.

The same as last month

1	/
2	
3	
4	/
5	
6	/
7	
8	/
9	
10	/
11	/
12	/
13	/
14	/
15	/
16	/
17	/
18	/
19	/
20	/
21	/
22	/
23	/
24	/
25	/
26	/
27	/
28	/
29	/
30	/

/

/

//

//

///

//

//

///

//

/

//

//

//

//

//

//

12
12
12
12

116
 98

 214
 205

 419
 21

 398
 182

 580

Day of the Month.

Day of the Week.

1	Sa
2	Su
3	Mo
4	Tu
5	We
6	Th
7	Fr
8	Sa
9	Su
10	Mo
11	Tu
12	We
13	Th
14	Fr
15	Sa
16	Su
17	Mo
18	Tu
19	We
20	Th
21	Fr
22	Sa
23	Su
24	Mo
25	Tu
26	We
27	Th
28	Fr
29	Sa
30	Su
31	Mo

Marks used in the Journal.

The Marks of Approbation are made with common Ink.

Presence at the hour of Meeting, thus,				I
Good Preparation, thus	-	-	-	I
Precedence in the Class	-	-	-	+

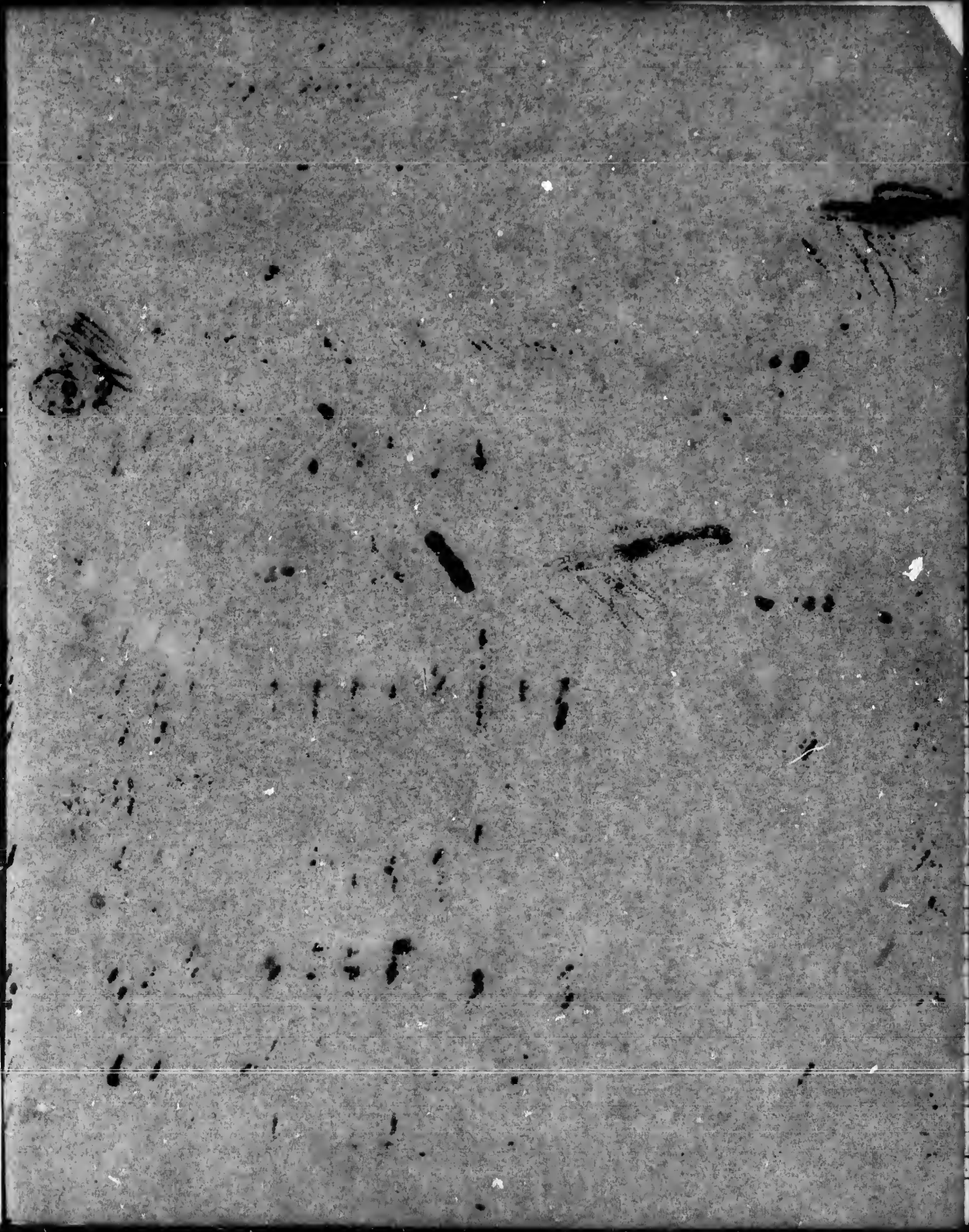
The Marks of Disapprobation are made with red Ink.

Lateness without cause, thus,	-	-		I
Bad Preparation, thus,	-	-	-	I
Inattention, thus,	-	-	-	I
Improper Conduct, thus,	-	-	-	+

Subjects studied this Month.

The same as last month

U



419 5700

101
80

181

94
78

172

~~100~~

Day of the Month.	Day of the Week.
1	Mon
2	Tue
3	We
4	Th
5	Fr
6	Sa
7	Su
8	M
9	T
10	W
11	Th
12	F
13	Sa
14	Su
15	M
16	T
17	W
18	Th
19	Fr
20	Sa
21	Su
22	M
23	T
24	W
25	Th
26	Fr
27	Sa
28	Su
29	M
30	T
31	W

Wilson's JOURNAL

Day of the Month.	Day of the Week.	Attendance.			LATIN. Monday, Tuesday, Thursday & Friday.				GREEK. Every day.	MATHEMATICS Every day except Saturday.	GEOGRAPHY. Tuesday, Thursday & Saturday.	ARITHMETIC every day Questions Spelling Book.	WRITING. Every day.	ENGLISH LANGUAGE.				EVIDENCES of Natural and Revealed Religion, Sunday.	Inattention and improper conduct.	Parent's Inspection.		
		6	9	2	LATIN GRAMMAR.	TRANSLATION	ETYMOLOGY.	MAKING LATIN. Prosody.						READING every Day.	ORTHOGRAPHY Every day.	GRAMMAR Mond. Wed. Fr	ELOCUTION Saturday.					
1	Mon	/	/	/																		
2	Tu	/	/	/	/	/	/	/	/	/	/											
3	We	H																				
4	Th	H																				
5	Fr																					
6	Sab																					
7	Su																					
8	Mo	H																				
9	Tu	/	/	/	/	/	/	/	/	/	/											
10	W	/	/	/	/	/	/	/	/	/	/											
11	Th	/	/	/	/	/	/	/	/	/	/											
12	Fr	/	/	/	/	/	/	/	/	/	/											
13	Sab	/	/																			
14	Sun																	4				
15	Mo	/	/																			
16	Tu	H																				
17	W	/	/	/					/	/	/											
18		/	/	/					/	/	/											
19		/	/	/					/	/	/											
20		/	/	/					/	/	/											
21		/	/	/					/	/	/							2				
22		/	/	/					/	/	/											
23		/	/	/					/	/	/											
24		/	/	/					/	/	/											
25		H																				
26		/	/	/					/	/	/											
27		/	/	/					/	/	/											
28		/	/	/					/	/	/											
29		/	/	/					/	/	/											
30		/	/	/					/	/	/											
31		/	/	/					/	/	/											

20 25 6 10

7

Marks used in the Journal.

The Marks of Approbation are made with common Ink.

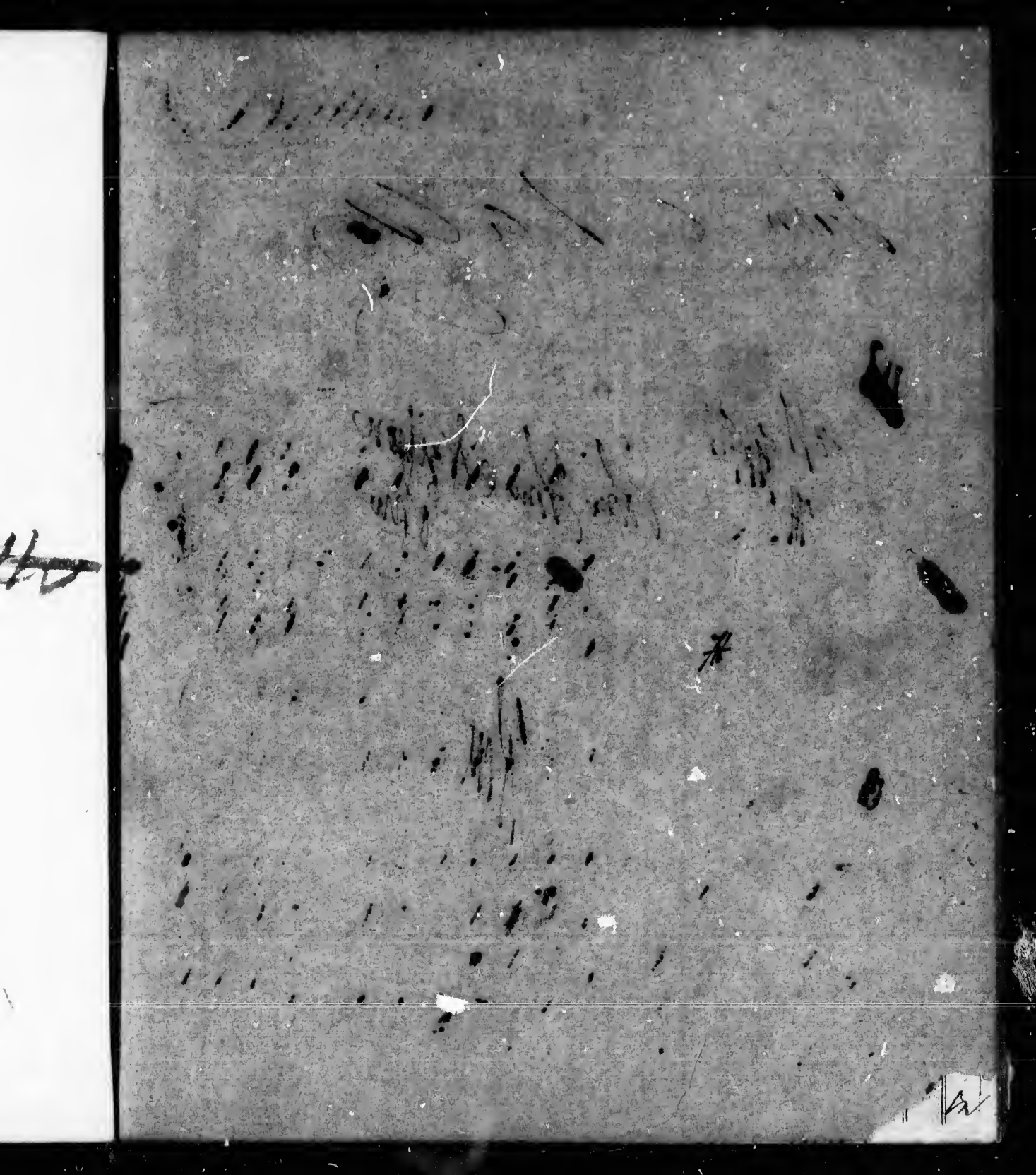
Presence at the hour of Meeting, thus,				I
Good Preparation, thus	-	-	-	I
Precedence in the Class	-	-	-	+

The Marks of Disapprobation are made with red Ink.

Lateness without cause, thus,	-	-	-	I
Bad Preparation, thus,	-	-	-	I
Inattention, thus,	-	-	-	I
Improper Conduct, thus,	-	-	-	+

Subjects studied this Month.

The same as last month



John C. Kell

all right
OK

John C. Kell
John

50 100
100 110

210

Day of the Month.	Day of the Week.
1	Th
2	W
3	Th
4	Fr
5	Sa
6	Su
7	Mo
8	Tu
9	W
10	Th
11	Fr
12	Sa
13	Su
14	Mo
15	Tu
16	W
17	Th
18	Fr
19	Sa
20	Su
21	Mo
22	Tu
23	W
24	Th
25	Fr
26	Sa
27	Su
28	Mo
29	Tu
30	W
31	Th

Marks used in the Journal.

The Marks of Approbation are made with common Ink.

Presence at the hour of Meeting, thus,	I
Good Preparation, thus	- - - I
Precedence in the Class	- - - +

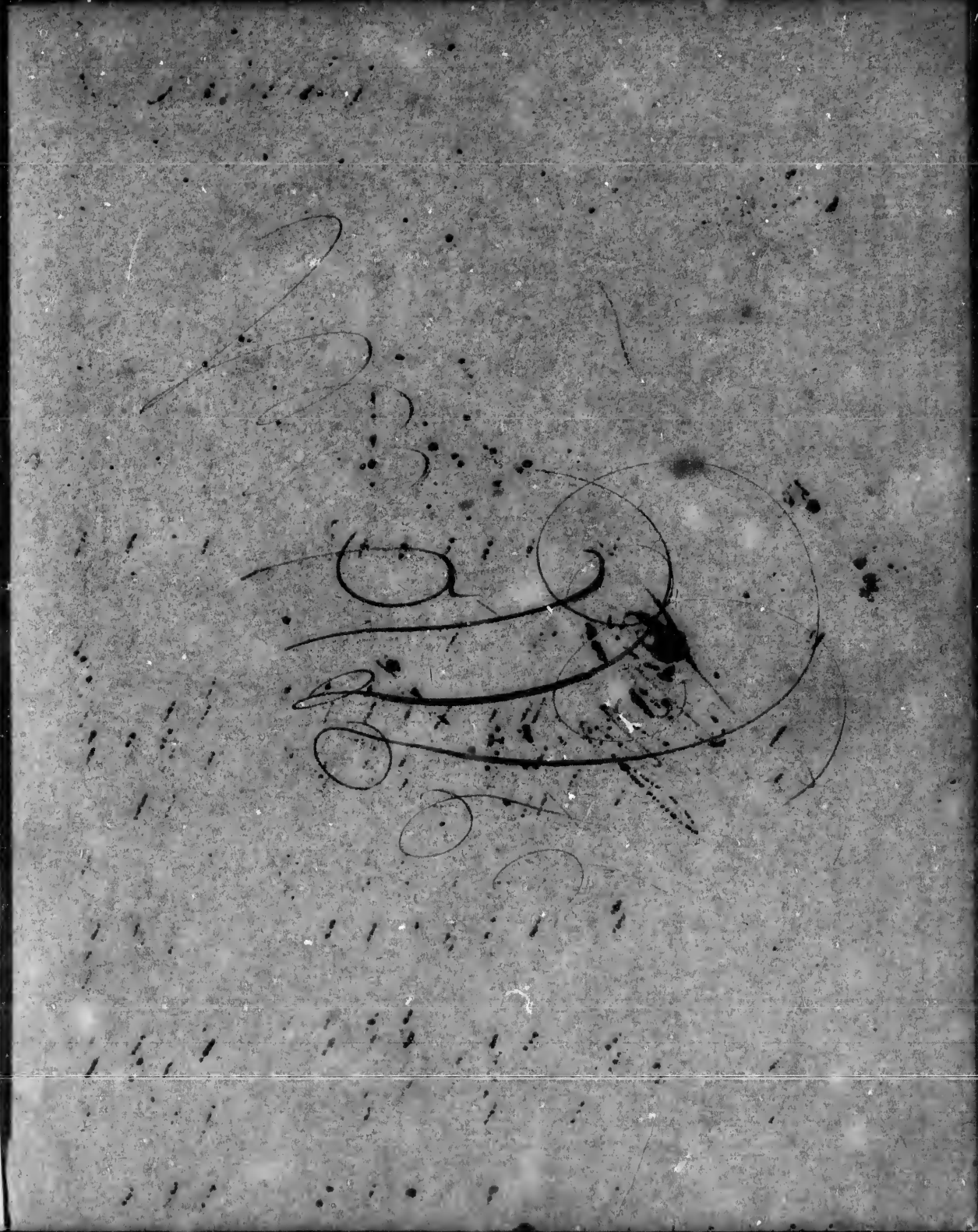
The Marks of Disapprobation are made with red Ink.

Lateness without cause, thus,	- - - I
Bad Preparation, thus,	- - - I
Inattention, thus,	- - - I
Improper Conduct, thus,	- - - +

Subjects studied this Month.

The same as last month.

Gymnology



Day of the Month.

1 /
2 /
3 /
4 /
5 /
6 /
7 /
8 /
9 /
10 /
11 /
12 /
13 /
14 /
15 /
16 /
17 /
18 /
19 /
20 /
21 /
22 /
23 /
24 /
25 /
26 /
27 /
28 /
29 /
30 /
31 /

Good Be
January

Marks used in the Journal.

The Marks of Approbation are made with common Ink.

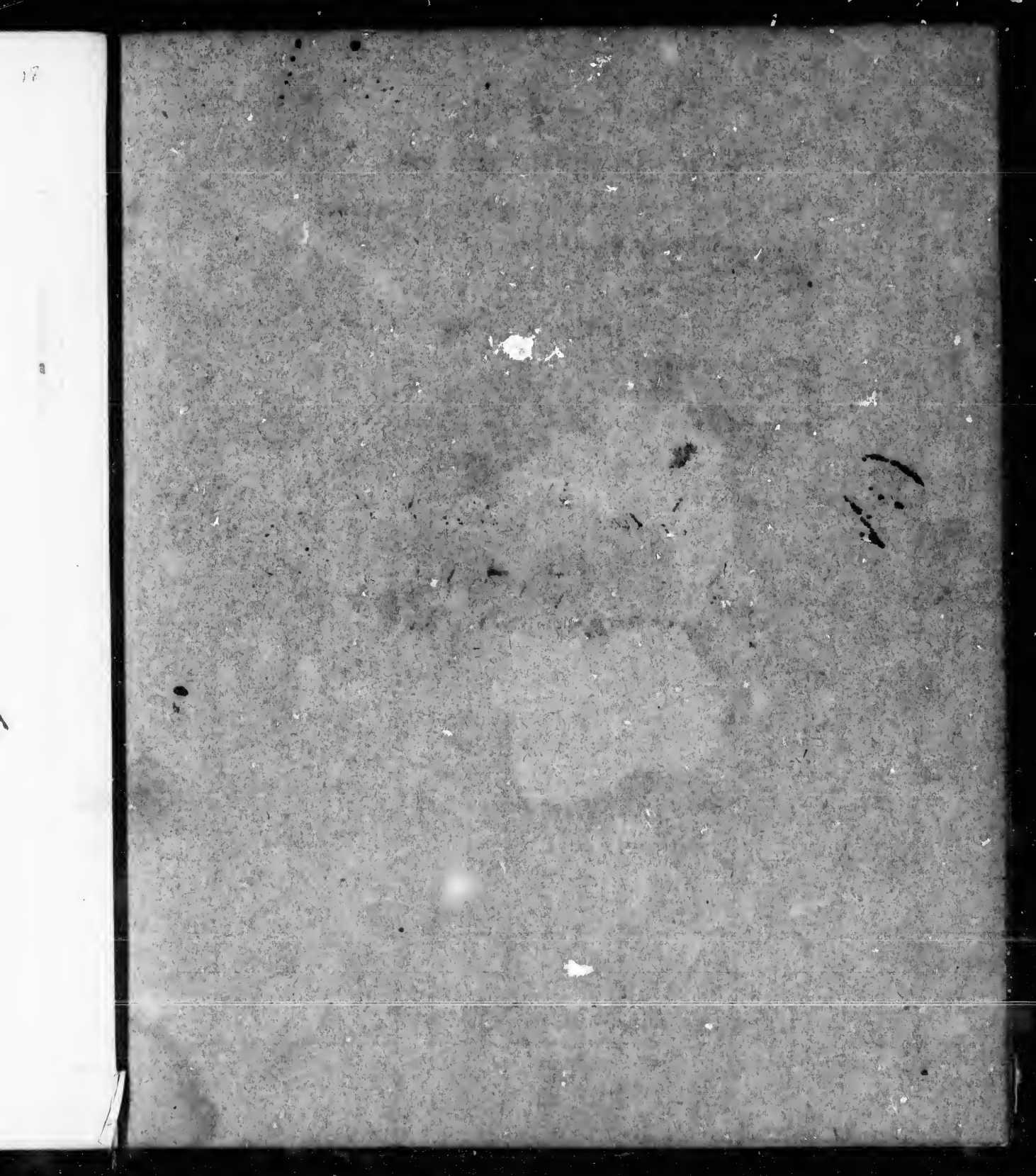
Presence at the hour of Meeting, thus,				I
Good Preparation, thus	-	-	-	I
Precedence in the Class	-	-	-	+

The Marks of Disapprobation are made with red Ink.

Lateness without cause, thus,	-	-	-	I
Bad Preparation, thus,	-	-	-	I
Inattention, thus,	-	-	-	I
Improper Conduct, thus,	-	-	-	+

Subjects studied this Month.

The same as last month



1800

1800

~~1800~~

Day of the Month.

- 1
- 2
- 3
- 4
- 5
- 6
- 7
- 8
- 9
- 10
- 11
- 12
- 13
- 14
- 15
- 16
- 17
- 18
- 19
- 20
- 21
- 22
- 23
- 24
- 25
- 26
- 27
- 28
- 29
- 30
- 31

Marks used in the Journal.

The Marks of Approbation are made with common Ink.

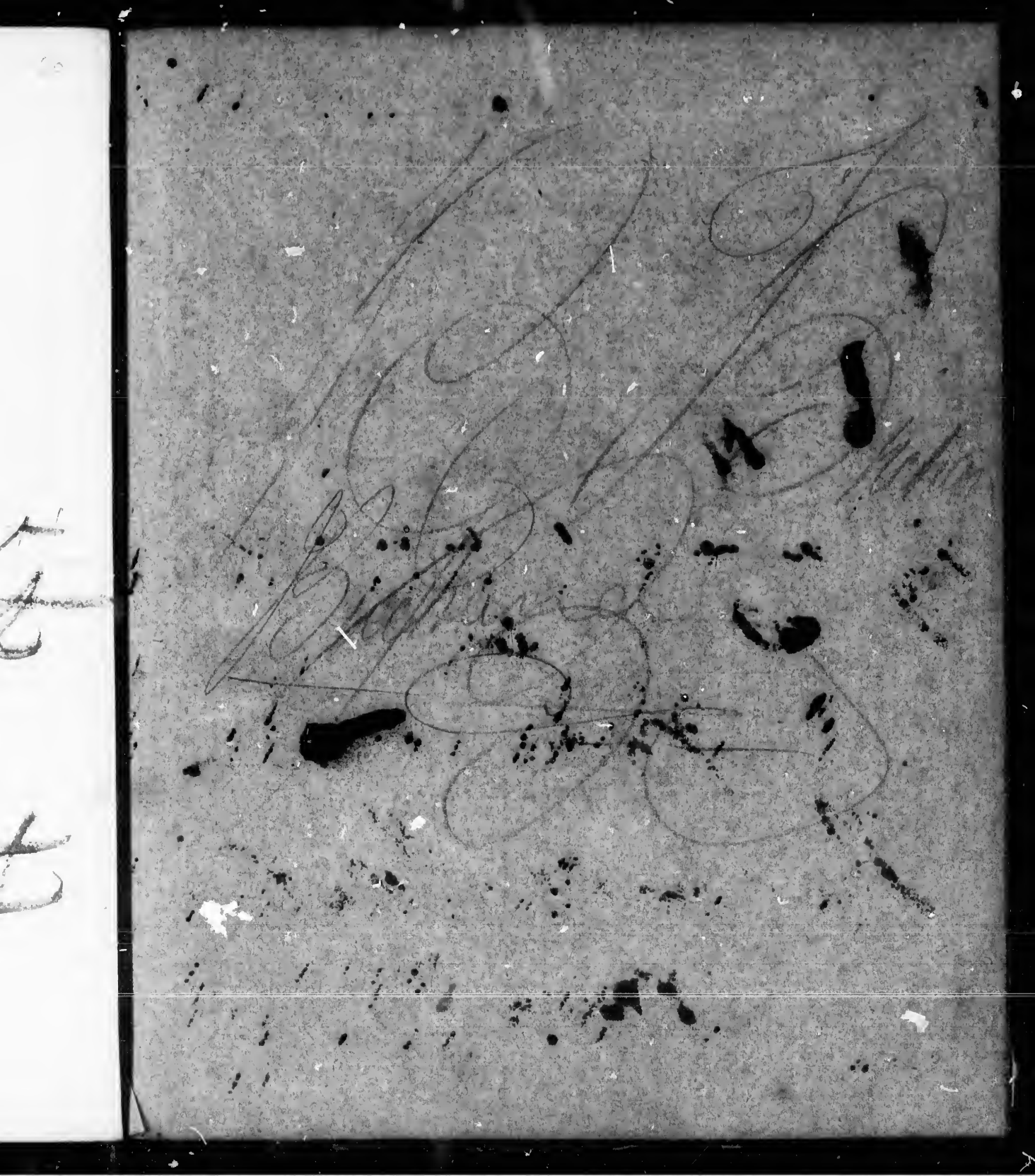
Presence at the hour of Meeting, thus,	-	-	-	I
Good Preparation, thus	-	-	-	I
Precedence in the Class	-	-	-	+

The Marks of Disapprobation are made with red Ink.

Lateness without cause, thus,	-	-	-	I
Bad Preparation, thus,	-	-	-	I
Inattention, thus,	-	-	-	I
Improper Conduct, thus,	-	-	-	+

Subjects studied this Month.

The same as last month
The same as last
month
The same as last
month



104
 52
 9.10
 174
 210
 384

102
 95
 60

Day of the Month.	Day of the Week.
1	T
2	S
3	W
4	M
5	T
6	W
7	T
8	F
9	S
10	S
11	M
12	W
13	W
14	W
15	F
16	S
17	
18	
19	
20	
21	
22	
23	
24	
25	
26	
27	
28	
29	
30	
31	

W. W. W.

JOURNAL

Day of the Month.	Day of the Week.	LATIN. Monday, Tuesday, Thursday & Friday.					GREEK. Every day.	MATHEMATICS Every day except Saturday.	GEOGRAPHY. Tuesday, Thursday & Saturday.	ARITHMETIC every day	WRITING. Every day.	ENGLISH LANGUAGE.					EVIDENCES of Natural and Revealed Religion, Sunday.	Inattention and improper conduct.	Parent's Inspection.
		Attendance.	LATIN GRAMMAR.	TRANSLATION	ETYMOLOGY.	MAKING LATIN.						PROSOODY.	READING every Day.	ORTHOGRAPHY Every day.	GRAMMAR Mond. Wed. Fr	Spelling Book.			
1	F																		
2	S																		
3	Sa																		
4	M		/																
5	T	/	/	/		+													
6	W	/	/	/		+			/	/	/								
7	Th	/	/	/		+	+		+	/									
8	F																		
9	S																		
10	Sa																		
11	S		/			+													
12	M		/						+	//									
13	T		/						+	//									
14	W	/	/	/		+	+		/	/									
15	Th	/	/	/		+	+		//	//									
16	F									/									
17	S																		
18	Sa																		
19	S																		
20	M		/						//	//									
21	T	/	/	/		+	+		//	3	/								
22	W	/	/	/		+	+		//	3	/								
23	Th	/	/	/															
24	F																		
25	S		/			+	+												
26	Sa	/	/	/		+	+		2	4	/								
27	S	/	/	/					1	3	/								
28	M	/	/	/		+	+												
29	T																		
30	W	/	/																
31	Th																		

19

50

m m m m

m m m m

m m m m

m m m

m

Marks used in the Journal.

The Marks of Approbation are made with common Ink.

Presence at the hour of Meeting, thus,	I
Good Preparation, thus	- - - I
Precedence in the Class	- - - +

The Marks of Disapprobation are made with red Ink.

Lateness without cause, thus,	- - - I
Bad Preparation, thus,	- - - I
Inattention, thus,	- - - I
Improper Conduct, thus,	- - - +

Subjects studied this Month.

The same as last month

Gymnology

07C
221
203
New

21049/10
Day of the Week

710

3311

200
200
200

10
10
10
10
10

200
200
200

200
200
200

300
155

204

hus,

75
95



Day of the Month.

- 1
- 2
- 3
- 4
- 5
- 6
- 7
- 8
- 9
- 10
- 11
- 12
- 13
- 14
- 15
- 16
- 17
- 18
- 19
- 20
- 21
- 22
- 23
- 24
- 25
- 26
- 27
- 28
- 29
- 30
- 31

Marks used in the Journal.

The Marks of Approbation are made with common Ink.

Presence at the hour of Meeting, thus,	I
Good Preparation, thus	- - - I
Precedence in the Class	- - - +

The Marks of Disapprobation are made with red Ink.

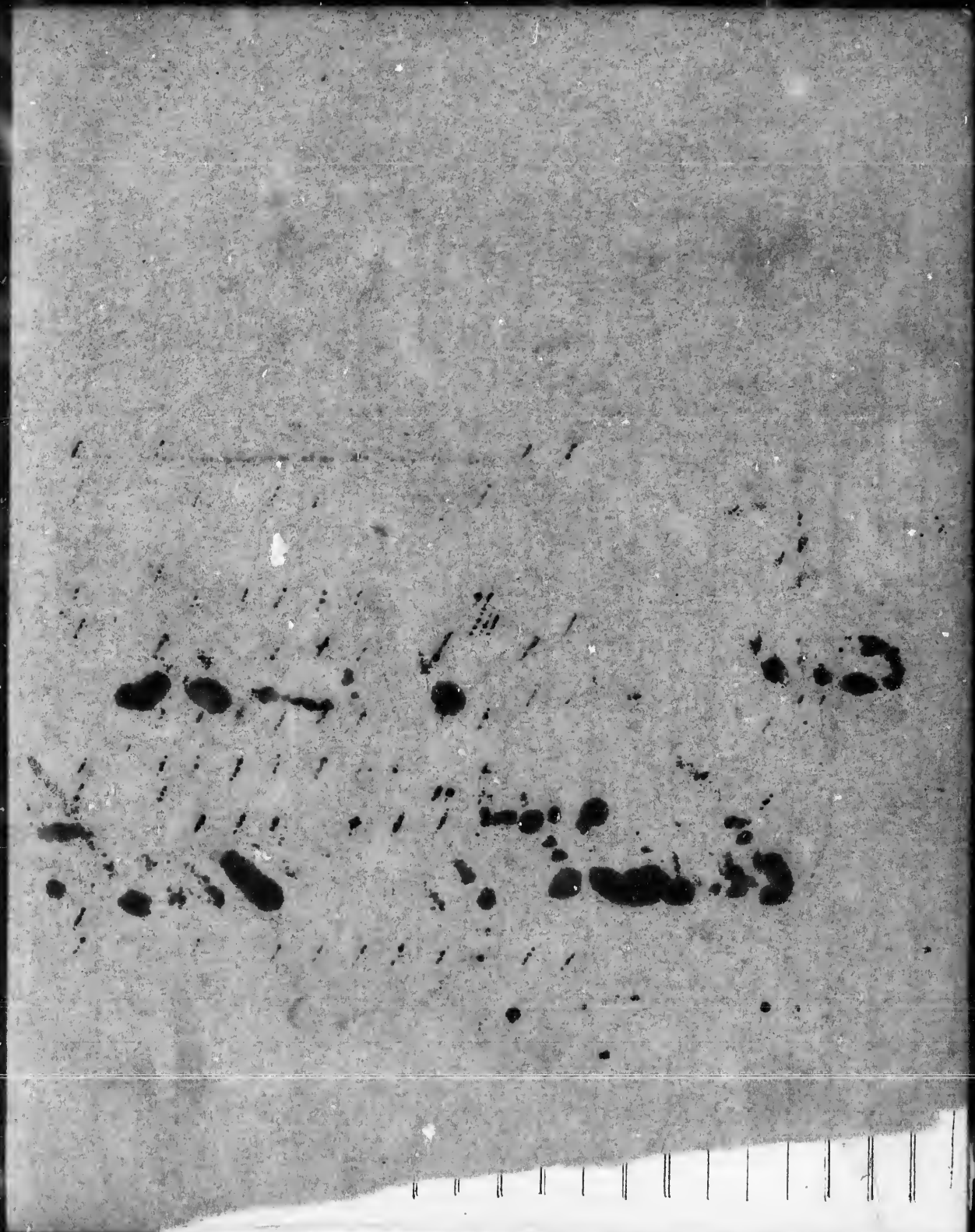
Lateness without cause, thus,	- - - I
Bad Preparation, thus,	- - - I
Inattention, thus,	- - - I
Improper Conduct, thus,	- - - +

Subjects studied this Month.

The same as
last month.

24

u
th



Day of the Month.

Day of the Week.

1

2

3

4

5

6

7

8

9

10

11

12

13

14

15

16

17

18

19

20

21

22

23

24

25

26

27

28

29

30

31

Marks used in the Journal.

The Marks of Approbation are made with common Ink.


Presence at the hour of Meeting, thus,	I
Good Preparation, thus	- - - I
Precedence in the Class	- - - +

The Marks of Disapprobation are made with red Ink.

Lateness without cause, thus,	- - I
Bad Preparation, thus,	- - - I
Inattention, thus,	- - - I
Improper Conduct, thus,	- - - +

Subjects studied this Month.

The subjects studied are Mathematics



entry

1850

1850

1850

Day of the Month.

- 1
- 2
- 3
- 4
- 5
- 6
- 7
- 8
- 9
- 10
- 11
- 12
- 13
- 14
- 15
- 16
- 17
- 18
- 19
- 20
- 21
- 22
- 23
- 24
- 25
- 26
- 27
- 28
- 29
- 30
- 31

2
1
25
16
3
2
10
9
8
9
10

17
18
19
20

17
18
19
20

10
11

Pulson's JOURNAL

Day of the Month.	Day of the Week.	LATIN. Monday, Tuesday, Thursday & Friday.					GREEK. Every day.	MATHEMATICS Every day except Saturday.	GEOGRAPHY. Tuesday, Thursday & Saturday.	ARITHMETIC every day.	WRITING. Every day.	ENGLISH LANGUAGE.					EVIDENCES of Natural and Revealed Religion, Sunday.	Inattention and improper conduct.	Parent's Inspection.		
		ATTENDANCE	LATIN GRAMMAR.	TRANSLATION	ETYMOLOGY.	MAKING LATIN. PROSE.						READING every Day.	ORTHOGRAPHY Every day.	GRAMMAR Mond. Wed. Fr.	ELOCUTION Saturday.						
1																					
2	/																				
3																					
4	/	/	/	/	/	/															
5	/	/	/	/	/	/															
6	/	/	/	/	/	/															
7	/	/	/	/	/	/															
8	/	/	/	/	/	/															
9		/				/															
10																					
11																					
12																					
13																					
14	/		/	/	/	/															
15		/	/	/	/	/															
16	/																				
17	/	/	/	/	/	/															
18																					
19	/	/	/	/	/	/															
20	/	/	/	/	/	/															
21	/	/	/	/	/	/															
22																					
23		<i>Dies interrogatio</i>																			
24																					
25	10	9	8	9	10	2	3	16	25	1											
26	H																				
27	H																				
28	H																				
29	H																				
30	H																				
31	H																				

No 869

