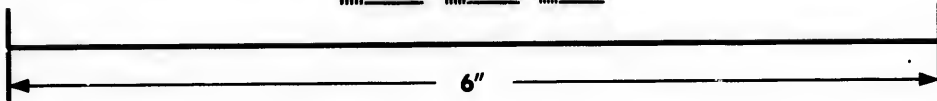
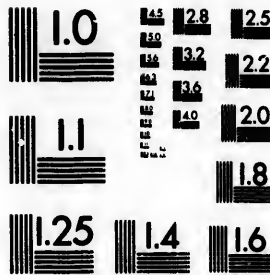


**IMAGE EVALUATION
TEST TARGET (MT-3)**



**Photographic
Sciences
Corporation**

23 WEST MAIN STREET
WEBSTER, N.Y. 14580
(716) 872-4503

15 128 125
16 132 122
18 20

**CIHM/ICMH
Microfiche
Series.**

**CIHM/ICMH
Collection de
microfiches.**



Canadian Institute for Historical Microreproductions / Institut canadien de microreproductions historiques

11
10
15

© 1985

Technical and Bibliographic Notes/Notes techniques et bibliographiques

The Institute has attempted to obtain the best original copy available for filming. Features of this copy which may be bibliographically unique, which may alter any of the images in the reproduction, or which may significantly change the usual method of filming, are checked below.

L'Institut a microfilmé le meilleur exemplaire qu'il lui a été possible de se procurer. Les détails de cet exemplaire qui sont peut-être uniques du point de vue bibliographique, qui peuvent modifier une image reproduite, ou qui peuvent exiger une modification dans la méthode normale de filmage sont indiqués ci-dessous.

- Coloured covers/
Couverture de couleur
- Covers damaged/
Couverture endommagée
- Covers restored and/or laminated/
Couverture restaurée et/ou pelliculée
- Cover title missing/
Le titre de couverture manque
- Coloured maps/
Cartes géographiques en couleur
- Coloured ink (i.e. other than blue or black)/
Encre de couleur (i.e. autre que bleue ou noire)
- Coloured plates and/or illustrations/
Planches et/ou illustrations en couleur
- Bound with other material/
Relié avec d'autres documents
- Tight binding may cause shadows or distortion
along interior margin/
La reliure serrée peut causer de l'ombre ou de la
distorsion le long de la marge intérieure
- Blank leaves added during restoration may
appear within the text. Whenever possible, these
have been omitted from filming/
Il se peut que certaines pages blanches ajoutées
lors d'une restauration apparaissent dans le texte,
mais, lorsque cela était possible, ces pages n'ont
pas été filmées.
- Additional comments:/
Commentaires supplémentaires:

- Coloured pages/
Pages de couleur
- Pages damaged/
Pages endommagées
- Pages restored and/or laminated/
Pages restaurées et/ou pelliculées
- Pages discoloured, stained or foxed/
Pages décolorées, tachetées ou piquées
- Pages detached/
Pages détachées
- Showthrough/
Transparence
- Quality of print varies/
Qualité inégale de l'impression
- Includes supplementary material/
Comprend du matériel supplémentaire
- Only edition available/
Seule édition disponible
- Pages wholly or partially obscured by errata
slips, tissues, etc., have been refilmed to
ensure the best possible image/
Les pages totalement ou partiellement
obscurcies par un feuillet d'errata, une pelure,
etc., ont été filmées à nouveau de façon à
obtenir la meilleure image possible.

This item is filmed at the reduction ratio checked below/
Ce document est filmé au taux de réduction indiqué ci-dessous.

10X	12X	14X	16X	18X	20X	22X	24X	26X	28X	30X	32X
			✓								

The copy filmed here has been reproduced thanks to the generosity of:

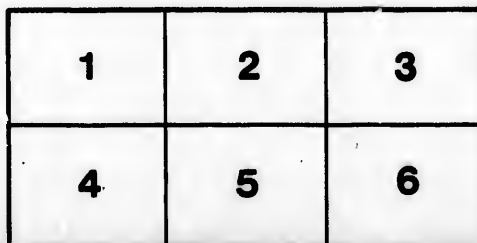
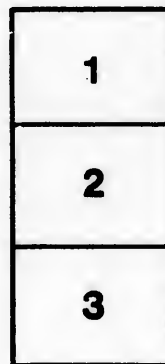
New Brunswick Museum
Saint John

The images appearing here are the best quality possible considering the condition and legibility of the original copy and in keeping with the filming contract specifications.

Original copies in printed paper covers are filmed beginning with the front cover and ending on the last page with a printed or illustrated impression, or the back cover when appropriate. All other original copies are filmed beginning on the first page with a printed or illustrated impression, and ending on the last page with a printed or illustrated impression.

The last recorded frame on each microfiche shall contain the symbol \rightarrow (meaning "CONTINUED"), or the symbol ∇ (meaning "END"), whichever applies.

Maps, plates, charts, etc., may be filmed at different reduction ratios. Those too large to be entirely included in one exposure are filmed beginning in the upper left hand corner, left to right and top to bottom, as many frames as required. The following diagrams illustrate the method:



L'exemplaire filmé fut reproduit grâce à la générosité de:

New Brunswick Museum
Saint John

Les images suivantes ont été reproduites avec le plus grand soin, compte tenu de la condition et de la netteté de l'exemplaire filmé, et en conformité avec les conditions du contrat de filmage.

Les exemplaires originaux dont la couverture en papier est imprimée sont filmés en commençant par le premier plat et en terminant soit par la dernière page qui comporte une empreinte d'impression ou d'illustration, soit par le second plat, selon le cas. Tous les autres exemplaires originaux sont filmés en commençant par la première page qui comporte une empreinte d'impression ou d'illustration et en terminant par la dernière page qui comporte une telle empreinte.

Un des symboles suivants apparaîtra sur la dernière image de chaque microfiche, selon le cas: le symbole \rightarrow signifie "A SUIVRE", le symbole ∇ signifie "FIN".

Les cartes, planches, tableaux, etc., peuvent être filmés à des taux de réduction différents. Lorsque le document est trop grand pour être reproduit en un seul cliché, il est filmé à partir de l'angle supérieur gauche, de gauche à droite, et de haut en bas, en prenant le nombre d'images nécessaire. Les diagrammes suivants illustrent la méthode.

ails
du
odifier
une
image

rrata
to

pelure,
h à

32X



MILITARY CATECHISM,

FOR THE USE OF
COMMANDING OFFICERS AND SERJEANTS,

**OF THE
INFANTRY:**

LIEUTENANT JOHN SIDNEY DOUGLAS

(Adjutant to the

REGIMENT) WHO HAS REVISED AND

NEW SYSTEM

THE ADJUTANT-GENERAL TO THE FORCES,

MAJOR GENERAL SIR HENRY TORRENS, K C B.

LONDON:

PRINTED FOR T. EGERTON, BOOKSELLER TO THE CHANCELLOR OF THE EXCHEQUER,
MILITARY LIBRARY, WHITEHALL.

SAINT JOHN'S

RE-PRINTED BY HENRY CHUBB, MARKET-SQUARE.

1827.



INDEX.

Officers commanding Divisions.

1. The Regiment in open Column of Divisions.
2. The column put in motion.
3. The Divisions wheeled into Line.
4. Ranks opened.
5. Ranks closed again.
6. The Divisions wheeled backwards.
7. Marching past in slow time to salute.
8. Marching past in quick time.
9. The column is closed to the front to Close Order.
10. Open column of Divisions forms column of Grand Divisions, and your's is a right Division.
11. A close column is cautioned to face to the reverse Flank to gain ground.
12. The column halts and fronts.
13. The column faced to deploy, and you command,—say *Second Battalion Company.*
14. The Battalion forms open column in rear of Grenadiers, and you command the *Grenadiers.*
15. If you command one of the companies filing into open column.
16. If you command a company filing into close column.
17. If it be a close column in rear of Light Infantry.
18. If a close column of Divisions upon a central one, and you command the named company.
19. 1st. The column deploys on a central company, and you are Officer commanding it.
— 2dly, The column deploys on a central company, and you command a company, not the named one.
20. A column of Divisions, right in front, ordered to form column of Sub-divisions.
21. If done on the March.
22. To form Divisions again, either halted or on the March.
23. If done by companies in succession.
24. If Subdivisions be wheeled into line on the proper pivot.

I N D E X.

26. If wheeled into Line to the Flank *not the proper pivot*, by Subdivisions *successively wheeling to the right*, for instance, if right in front.
27. If Subdivisions break into Sections.
28. An open column of Divisions countermarched by files.
29. Close column countermarched by Ranks.
30. Battalion advances in Line.
31. Retires in Line.
32. Retires by alternate Companies.
33. Retires by Files or Threes from the right or left of companies.
34. Battalion changes front by the March in Echelon.
35. Gains ground to the Flank by Echelon of Subdivisions or Sections, say right Flank.
36. If to the Left Flank.

To Covering Serjeants.

1. The Regiment in open column of divisions.
2. The column put in motion.
3. The column, right in front, wheels into line.
4. The column left in front.
5. The Ranks opened.
6. The Ranks closed.
7. The Divisions wheeled into open column.
8. If you belong to the leading Division.
9. Marching past in slow time.
10. Marching past in quick time.
11. Column closed to the front in close order.
12. Column of Divisions form columns of Grand Divisions, and your's is a right Company.
13. Column of Divisions takes ground to the reverse Flank.
14. Column halted and fronted.
15. Column of Divisions faced to a Flank to deploy.
16. Division halted, fronted, or turned, and marched up into line.
17. Column of Divisions halted forms Column of Subdivisions.
18. If done on the March.
19. Subdivisions, right in front, wheeled into Line on the proper pivot.

INDEX.

20. If *Subdivisions* form Line by *successively* wheeling to the Flank *not the proper pivot*, right in front, and you *wheel* to the right.
21. Column of *Divisions* countermarched by *Files* or *Ranks*.
22. *Subdivisions* break into *Sections*.
23. *Sections*, right in front, wheel into Line.
24. If left in front.
25. If *Files* be doubled up.
26. Battalion forms *Open Column of Divisions* in rear of the Grenadiers, and you a *Covering Serjeant of Grenadiers*.
27. If you belong to one of the companies *filig* into column.
28. If the *column* formed is a *close* one in rear of a named company.
29. If in front of a company, suppose *Light Infantry*.
30. Battalion forms *close column*, either flank in front, on a central company, and you a *Covering Serjeant* of the named company.
31. Column *deploys* on a central company, and you a *Covering Serjeant* of the named company, and in alignment with the *leading Division*.
32. Battalion *changes front* by the *March* in *Echellon*.
33. If *Echellon* of *Subdivisions* or *Sections*.
34. Battalion *Advances* or *Retires* in Line.
35. By *alternate* Companies.
36. Battalion *retires* by *Threes* from the *right* or *left* of Companies.
37. Your company is ordered to *close* to the *Right* or *Left* by the *Side Step*.
38. Changing from *one Flank* to another of your Company.
39. Number of *Paces* required for a given number of *Files*.
40. Double Column of *Subdivisions* (formed on the *two Centre* *Subdivisions*) ordered to *form Line* on the *two Centre* *Subdivisions* facing to the rear, and you a *Covering Serjeant* of a *Centre* Company.
41. Formation to *Line* required upon the *Alignment* of the *two rear Subdivisions* facing to the rear, and you a *Coverer* of a *Centre* Company.
42. Retiring in *double* Column of *Subdivisions* from the *Centre* forms *line* to the *former rear*, and you a *Serjeant* dividing *two* *Sub-divisions*.

I N D E X.

43. Battalion in Line changes front to the rear upon the *centre*, and you are a coverer of a centre company.
44. Battalion changes position on a central *halted* company by the flank march of *Threes*, and one *wing* is thrown *forward* and the other *backward*, and you coverer of the named company.
45. Column of *companies* forms *Grand Division Squares*, and you coverer of a *right* company.
46. Column formed at quarter distance, changing front, and *wings*, by forming *four deep*.

To Centre Serjeants.

1. Line advances, and you a centre *directing* Serjeant.
2. The Duties of the *other centre Serjeants* when advancing.
3. Line ordered to *Retire*.
4. Battalion *advances* or retires by *alternate* companies.
5. Advances or retires by *half* Battalion.
6. Battalion *advancing* in Line ordered to charge.

Memorandums for Supernumerary Serjeants.

1. Open *Column of Companies*.
2. Companies *wheeled into Line*.
3. Marching past in *slow* or *quick time*.
4. *Close Column of Divisions*.
5. When they *deploy*.
6. If *close column* of *Grand Divisions*.
7. The column of *Grand Divisions deploys*.
8. When in *close column*, it becomes necessary for the Officer to change his flank.
9. If you are Supernumerary Serjeant of a *central company* upon which a *close column* is formed.
10. If you are Supernumerary Serjeant of the *central company*, upon which the *column deploys*, and forms *Line*.
11. If a column of *Divisions* breaks into column of *Subdivisions*.
12. If a column of *Divisions* breaks into *Sections*.

QUESTIONS

TO

OFFICERS COMMANDING COMPANIES,

WITH THEIR

ANSWERS.

QUESTIONS.

ANSWERS.

1. The Regiment in open Column of Divisions where is your place?

Upon the *proper* pivot flank of the Division; for instance if *Right* in front, upon the *left* of the Company, and vice versa.

2. The Column is put in motion.

If mine is the leading Company of the Column, I must first ascertain that my person is perfectly square, and take intermediate points in a true line with the object given me to march on; I must also give my particular attention* to the *cadence* of step in which I am marching; and be careful to observe my *distance* and *covering*; to these points my whole attention must be fixed.

(The Officers and Sergeants in rear of the company will keep the ranks dressed; the men well locked up, &c.)

3. The Divisions receive the *Caution* to wheel into line—*March*.

Upon the *caution* I place myself in front of the centre of my Company (my back to it) at three paces distance from the front rank, and remain steady until the word—

QUESTIONS.

ANSWERS.

'*March*,' when I quickly place myself at the *second* file of the company upon the *right* of mine, if we have wheeled to the *left*; and at the *second* file of the company upon the *left* of mine if we have wheeled to the *right*; and from thence *dress* my company in line with the pivot men of both companies. I always begin by dressing the three files of my company nearest to me, the remainder of the company can then quickly take up the proper line; when they have done so, I give the word "*Eyes front*," and fall in upon the right of my division, shifting my flank round the rear, if we have wheeled to the right.

4. Rear rank is cautioned to take *Open Order*; "*March*."

At the word "*Order*" I recover my sword, and at "*March*" I take three paces forward, obliquing to my left, so as to be opposite the *second file*. I face to my right and cover, and when covered, remain steady until the signal to front is given by the Field Officer; I then *front*, and drop my sword to the *port*.

5. At the Caution, Rear Rank take *Close Order*; "*March*."

At the word "*Order*," I recover my sword and face to the right; at the word "*March*," I resume my place upon the *right* of my company (moving in slow time,) and when I reach my interval, I *halt, front*, and *carry* my sword.

6.
ceive
"

7.
slow t

QUESTIONS.

6. The Divisions receive the Caution, to
 "Wheel backwards,
 March."

7. Marching past in
 slow time to Salute.

ANSWERS.

At the *Caution* I place myself in front, and close to the centre of my company; at the word "*March*" I turn towards it, and observe that the men wheel carefully: having moved to my standing pivot, I *halt, dress* my company (or *halt, front, dress* it, if it has faced about) when it has completed the wheel; when dressed, I give the word "*Eyes front,*" and place myself upon the flank touching my pivot man.

My company having brought their shoulders forward at the point which brings it on the line on which I am to salute, I change my flank *round the rear*, when I have quitted the wheeling point *six* paces; as soon as I have got to the right of the Company, I give the word "*By the right;*" I open my ranks, "*Rear Rank take Open Order;*" within *thirty* paces of the General, or Reviewing Officer, and step *three* paces in front of my second file.— When within *six* paces of the Reviewing Officer, I salute (having given a signal to the Subalterns of my company with my left hand, that we may salute together.) When *ten* paces past the Reviewing Officer, I recover my sword; I close my ranks, "*Rear Rank take Close Order,*" twenty paces from the General, and shift my flank at the same time, giving the word "*By the Left.*"

QUESTIONS.

ANSWERS.

8. Marching past in quick time.

I shift my flank as in slow time, at six paces from the wheeling point, and give the word "*By the Right,*" observing my distance and covering, and shift by the rear of my Division to the proper pivot, as soon as I have marched twenty paces past the General.

9. The column is closed to the front to *Close Order.*

I take care to cover correctly while on the march, and *halt* my Company at two full paces from the rear rank of the Company in front.

10. Open column of divisions, right in front, forms column of Grand Divisions, and your's is a Right Division.

I face with my Company to the right about $\frac{3}{4}$ which is led by the covering Sergeant (if there is a supernumerary Sergeant to mark the outward flank of the company.) As soon as my company has cleared the right of the standing company, (at which place I have taken my post,) I "*halt, front*" my company, and dress it upon the left company. I give the word "*Eyes front*" and immediately shift by the rear to the right of my company.

11. A close column is cautioned to face to the reverse flank to gain ground.

Immediately upon the caution, I change my flank by the rear; for if I waited until the column had faced, there would not be room to pass between the companies.

QUESTIONS.

ANSWERS.

12. The column halted and fronted.

I return to my proper Pivot Flank.

13. The column is faced to a flank to *deploy*, say to the *left*, and you are commanding, suppose the *second* Battalion Company.

I lead my company until the Captain of the 1st Battalion company has given the word "*Front turn*," I then halt in my own person, and let my company move on, and as soon as my rear file has cleared the flank of the first company I give the word "*Front turn*," and soon as they have reached within one pace of the Sergeant who has taken up the covering in the new alignment, I give the word "*Halt, dress up*."

14. The Battalion forms open column in rear of a named Company, suppose Grenadiers, and you command that company, (Grenadiers.)

I shift to my left flank (the proper pivot) to give a point upon which the companies filing into column may cover in the new alignment.

15. If you command one of the companies filing into open column.

I am cautious to observe my wheeling distance from the company between mine and the column, and to dress by the heads of the companies; I conduct the head of my company to my covering Sergeant, (when I halt in my own person,) allowing it to pass in his rear, until the left has cleared him one pace, when I give the word "*Halt, front, dress up*," and upon my giving the word "*Eyes front*" I fall in upon the left, the pivot flank of my company.

QUESTIONS.

ANSWERS.

16. If you command a company filing into close column.

When my company faces, I disengage with the leading section of "Threes," and keep the precise same distance from the rear of the company in my front, during the whole march into column, that I had upon setting off. When I reach the column, I let my company pass, and "*Halt, front*" it, when the rear file has passed the covering Sergeant, who has run out when within six paces of the column, and taken up the distance and covering for the division. Great care must be taken that the leading company does not step short, else it will check the whole Battalion.

17. If it be a close column in rear of the Light Infantry.

I lead my company as above, and recollect that the *right* is the proper pivot.

18. If a close column of division be formed upon a central company and you command the named company.

Immediately upon the caution, (if it be necessary,) I shift my flank.

19. 1st, if the column deploys upon a central company, on the alignment of the leading division, and you are officer of it.

No. 1. As soon as the company in front of mine has cleared my flank I give the word "*Quick March*," and move up in the new alignment, and "*halt*" and *dress* my company.

2nd. If the column deploys upon a central com-

No. 2. If in front of the central company, upon the caution I shift

QUESTIONS: 4A

ANSWERS: 2102

pany in line with it and my flank, and if mine is the first you command a company, company to be formed upon the not the named central named one, I stand fast and allow company. *word: "Rear turn" and when my company has passed the company already in line, two paces, "Halt, front, dress up;"* but if mine is any other company, in front of the above, I lead it on until the company in my rear receives the word *"Rear turn,"* when I halt in my own person, allowing my company to pass on, and give the word *"Rear turn"* as before. If in rear of the central company, I lead it as above; and when clear for deployment, I give the word *"Front turn;"* and when within one pace of the company already formed, *Halt, dress up."*

20. An open column I advance to mark the point of divisions, right in front where the left flank of the right halted, is ordered to form Sub-division is to rest, and when it column of sub-divisions. reaches me, I give the word *"Halt, front, dress."*

21. If this be done up- I step nimbly forward to Sub- on the march. division distance, and when the inner file of the reverse Sub-division reaches me, I give the word *"Front turn, quick,"* (if marching in quick time,) but if marching in slow time, I give the word *"Slow."*

QUESTIONS.

ANSWERS.

22. To form Divisions again, either halted or on the march.

When halted, I face to the right about, on the word "Face" being given by the Commanding Officer; and at the word "March," I move to the pivot flank of my rear Sub-division; and when the reverse Sub-division has obliqued so as to gain the line of the Pivot Sub-division, I give the word "Halt, front dress," and take post on the Pivot Flank of my Company.

If on the March, and the word Turn is given by the Commander, I mark time until my pivot Sub-division reaches me, when I order, "Reverse Sub-division front turn."

23. If the above is done by Companies in succession.

If mine is the leading company, I do it when ordered by the commander giving the word for the diagonal advance, or for the Flank march of my reverse Sub-division, as circumstances may require; but if mine is a succeeding one, I do it on the same spot the company before mine did so.

24. If Sub-Divisions were wheeled into line upon the proper pivot.

25. If the Sub-division were to form line, by successively wheeling to the flank, not the proper pivot; for instance, if right

When halted, I face to the right about, on the word "Face" being given by the Commanding Officer; and at the word "March," I move to the pivot flank of my rear Sub-division; and when the reverse Sub-division has obliqued so as to gain the line of the Pivot Sub-division, I give the word "Halt, front dress," and take post on the Pivot Flank of my Company.

If on the March, and the word Turn is given by the Commander, I mark time until my pivot Sub-division reaches me, when I order, "Reverse Sub-division front turn."

If mine is the leading company, I do it when ordered by the commander giving the word for the diagonal advance, or for the Flank march of my reverse Sub-division, as circumstances may require; but if mine is a succeeding one, I do it on the same spot the company before mine did so.

I do as in the case of my Company wheeling into line, and dress both Sub-divisions.

Immediately upon the caution I shift my flank, and if mine is the leading Sub-division of the column, I give the word to my sub-division "Left shoulders forward," and when

QUESTIONS.

ANSWERS.

in front and the wheel is to the right.

it has wheeled the quarter circle, I order "*Halt, dress.*" But if mine is the succeeding one, I order "*left half turn,*" and when the right of my sub-division clears the rear rank of the one already formed, I order, "*Front turn,*" and when the right of mine reaches the left of the one formed, I order, "*Left shoulders forward, halt, dress up,*" after which I return to my proper company place in line.

26. If the Sub-Divisions break into sections.

I take charge of the first Section.

27. If you are to decrease your front by breaking off a few files.

If right in front, I give the word "*One two, three, or four files on the right, Left turn, right wheel;*" if left in front, "*Files on the left, Right turn, left wheel.*" To bring them to the front again, I order "*Rear files to the front.*"

28. An open column of divisions is ordered to countermarch by Files.

I shift my flank when my company faces, and lead it round close always to the opposite hand to which I have faced; and I "*halt, front*" my Company the moment my leading file reaches within one pace of my Serjeant, so as not to give the men time to crowd.

QUESTIONS.

ANSWERS.

29. **Close Column** **On the word face** being given by the commander, I step aside, and place my breast upon my covering Serjeants outward shoulder, and when the countermarch is completed, I give the word "*Halt, front, dress,*" and at *Eyes front*, I replace my Serjeant.

30. **If the Battalion advances in line.** I must not attempt to dress my company on the march, that will be done by the supernumerary rank in the rear; my great care must be to observe perfect squareness in my own person, and to keep the proper cadence and dressing, as every other individual should do.

31. **The Battalion retires in line.** I face about with the rest of the Battalion, and I do not change places with my Serjeant, but remain with the then rear rank, so as to be in my proper place the moment "*Halt, front*" is given; when a column retires, I shift to the then front rank, to judge my distance and to cover.

32. **The Battalion retires by alternate companies.** If I am not already upon the inward flank of my company, I shift to it the moment the company faces about, this enables me to keep my interval more correctly.

QUESTIONS.

ANSWERS.

33. The Battalion retires by files or threes, from the right or left of companies.

I lead out square, and dress and keep my distance, if in file from the right of companies, from the left and vice versa, or from any company named by the commanding Officer as the company of direction. The same direction is to be observed in advancing by Files.

34. If the Battalion changes front by the march in Echellon.

My company having wheeled the given number of paces, and being correctly dressed, to ensure which I must not suffer the File (the 8th) which has wheeled to the Serjeant to move, after it touches him; I carefully observe my relative situation with the company in front of me, I keep the same distance from it, and cover the same file on the march. I also observe my oblique covering on the line of Pivots. When I reach the outer shoulder of the rear rank man, on the Flank of the company formed before me, I give the word "*Shoulders forward*," and place myself in front of the flank of that company, from which I dress my company when it gets into line.

35. If the battalion advancing in line gains ground to a flank, by the march in Echellon of sub-divisions or sections, say to the *right* flank.

I don't move from the right of my company, but remain there and conform to the rules of Echellon March.

QUESTIONS.

ANSWERS.

36. If to the *Left*
Flank.

I remain with my rear sub-division or section, but shift to the left of it, and if wheeled back into line, resume my place on the right.

Nota Bene.

QUESTIONS.

ANSWERS.

1st. In marching to a flank by threes; is the officer in front of the file or on the inner flank?

On the inner flank the same as in column.
Outwards.

2d. Is a double column faced outwards or inwards to countermarch?

Outwards.

MEMORANDA.

It is better to halt in *rear* of an alignment, and *dress up*, than to allow the line to be overstepped. Always leave the object, upon which you dress, well open to view; for instance, *half a pace* in front—Dress your company from the pivot of the company already in line, and the one file beyond him, to your own Serjeant, and the distant object. Whenever in *close* column it becomes necessary to shift your flank, do so upon the *Caution*, and not *after* the company *has* faced by *Threes*, when there ceases to be room between the companies.

It is essentially necessary, that when the front of a column is increased or diminished by divisions *in succession*, that the

won
up
col
stan
thi
tion

fou
ma
stan
Piv
ser
soo
wo
if i

will
Cor
ry

T
Ad
ous
the
be
ma
tion

T
of v
fice
tise

words of command should be repeated at the *precise same spot* upon which they were given by the company in front, if the column be in motion; if it be halted, the words are given *instantly* after the Commanding Officer has given the *Caution*; this latter mode is the best, even where the column is in motion.

When a company is marching to a flank, by files, threes or fours, with its right leading, and receives the word of command *to the front from company*, the officer commanding instantly inclines to the left flank, which becomes the proper Pivot, looking to his company as he inclines, that he may observe that the files touch to the right *and dress by the left*; as soon as they have completed the quarter circle, he gives the word *forward by the left*, and takes post upon the flank, and if in column, observes his distance and covering.

As in all other things, *practice* is absolutely necessary; this will be obtained by *one* company in a Regiment, Officers, Non-Commissioned Officers, and Privates, being kept off duty every day, for the purpose of *minute inspection* and *particular drill*.

The Young Officers and all the Serjeants should attend the Adjutant at the Orderly Room, every day, for an hour, previous to their *second Drill*, when he should recapitulate to them the errors that were committed in the morning, and they should be asked their particular duties and positions in the various manoeuvres, and be referred to the Catechism for their instruction.

The House Drill should be carried into effect with the aid of wooden platoons and small markers, to distinguish the Officers and Serjeants. The theory of this hour should be practised the Drill following.

John

John

John

[Faint, illegible text covering the majority of the page, possibly bleed-through from the reverse side.]

I
M
90
-
J

Adg
I
ban
mu
24
**is, in
vision
plac**

2
lum
-
3
**from
"W"**

4
in fr

QUESTIONS

COVERING SERGEANTS.

QUESTIONS.

ANSWERS.

1. **When the regiment is in open column of divisions, where is your place?** In rear of the second file from the flank where the Officer commanding the company is stationed.

2. **When the open column is put into motion.** I still continue to cover the second file.

3. **The column right in front receives the caution "Wheel into line March."** Immediately upon the caution, I slip round the rear to the wheeling flank, wheel round with it, so as to keep the Officer's place in Line, and I do not fall back until the Officer has completed the dressing.

4. **If the column is left in front.** I continue in rear of the second file from the Pivot until the wheel is completed, when I step into the front rank and preserve my officer's place until he gives the word "eyes front," I then fall back into the rear rank and cover him.

QUESTIONS.

ANSWERS.

5. When the ranks are opened, "*March.*"

At the command "*March,*" I take an oblique step to the left, and cover the right hand man of the front rank, until the supernumerary officers have passed, when I step into the Officer's place in the front rank.

6. The Ranks closed again, "*March.*"

At the caution I face to the right, and on the command "*March,*" I take two side steps to my right and one backwards, which places me close in rear of the right file, where I remain until the supernumerary Officers have passed, I then cover my Officer.

7. The Divisions wheeled into Open Column from Line.

Whether the wheel is performed backward or forward, I fall back two paces at the caution, and during the wheel (if necessary,) incline towards the pivot flank.

8. If you belong to the leading Division.

In wheeling either into line or column, I run out at the caution and mark the point where the wheeling flank is to rest.

9. Marching past in slow time.

The moment the Officer opens the ranks, and moves out to salute, I step up into his place, and take great care to cover, and keep my wheeling distance, from the *front rank* of the company before me.

QUESTIONS.

ANSWERS.

10. Marching past in Quick Time.

I keep in the rear, covering the second file from the right of the company, at two paces distance.

11. The Column is closed to the front to *Close Order*.

While it is in motion, I cover the second file; when it is *halted*, I cover the officer.

12. The column of Divisions is formed into column of Grand Divisions and your's is a right company.

I face with my company to the right, about three-fourths, and run out to take up the covering on the left company. I remain upon the right flank until the company is dressed, when I change places with the officer and go to the left flank.

13. If a column of divisions receives a caution to take ground to the reverse flank,

Immediately upon the Caution, I follow the officer to the reverse flank.

14. The column is *halted* and *fronted*.

I return (following the Officer) to the proper pivot flank.

15. The column of divisions is faced to a flank to deploy.

When the Officer halts in his own person, I place myself in front of the *front rank* file-leader of my company, and in leading out, am cautious not to incline to the new alignment or fall off from it. When the Officer is with the division, I place myself in front of the centre man of the leading Section of Three.

QUESTIONS.

ANSWERS.

16. The Division is halted, fronted, or turned, and marched up into Line.

When within eight paces of the point of formation, I run out and take up the covering in the new alignment, and will remain there steady until the third company from me receives the word "*Eyes front.*" A supernumerary serjeant, or the rear rank right-hand man, keeps the place of the officer while he is dressing his company.

17. If a Column of Divisions halted, is ordered to form column of Sub-divisions.

If no second officer is present, I take command of the rear Sub-division. If the rear Sub-division is likewise commanded by an Officer, I cover the second file from the pivot flank of the leading Sub-division.

18. If this be done upon the march.

If no second officer is present, I take command of the rear sub-division, and cautiously observe my distance and covering. When divisions are formed again, I resume my place in rear of the second file. If an Officer commands the rear sub-division, I move to the front, and cover the second file from the pivot where the officer is posted.

19. If the Sub-divisions right in front be wheeled into Line upon their pivot.

Immediately upon the caution I pass through the interval and place myself on the right flank of the front sub-division, wheel with it into line, and there keep the place of the officer whilst he is

QUESTIONS.

ANSWERS.

20. If the sub-divisions be ordered to form Line, by successively wheeling to the flank not the proper pivot, for instance, if right in front and they wheel to the Right.

21. The column of divisions is ordered to countermarch either by Files or Ranks.

22. If the sub-divisions shall have broken into Sections.

23. Sections right in front wheel into Line.

dressing the sub-divisions, except I am coverer of the leading company. In that case, I run out and place myself in line with the pivots, to mark the place where the wheel is to be completed.

If I command the rear sub-division, I shift my flank upon the caution, and when my sub-division having obliqued a little to the left at my order "*Left half turn, front turn,*" has cleared the left flank of the one already in line, I give the word "*Left shoulders forward, halt, dress up,*" and then I fall to the rear leaving the Officer to dress the Sub-division.

On the command "*Right,*" "*Left,*" or "*Outwards face,*" I face to the right-about, and remain steady until the company is dressed, when I fall back for the Officer commanding to take my place.

Should there not be officers to take charge of all the sections, I fall back with the second section; but should there be officers sufficient, I cover the second file from the pivot of the leading section.

I pass through the interval and take post on the right of the front section, and wheel into line with it.

QUESTIONS.

ANSWERS.

24. If left in front.

At the cautionary command "*Wheel into line,*" I fall back to the rear of the company, and at the completion of the wheel, place myself on the right of the front rank, to preserve my officer's place during the time he is dressing it.

25. If Files be doubled up.

I pay attention that they double from the reverse flank, and make them lock well up.

26. If the Battalion forms open column of divisions in rear of a named company, (suppose Grenadiers,) and you are covering Serjeant of Grenadiers.

Immediately upon the Caution I step in front of my officer, and take six paces forward, face my officer, and cover in the new direction; thus giving a point upon which the other Serjeants cover.

27. If you belong to one of the companies filing into column.

I place myself in front of the centre-rank man of the leading section of "*Threes;*" when I have got within six paces of the column, I run forward to take up my distance, (which my eye should do without pacing it,) cover correctly, and remain steady until the company is dressed, when I fall to the rear.

28. If the column formed is a *close one*, and in rear of a named company, suppose Grenadiers.

When my company is within six paces of the column, I run out and cover exactly at two full paces distance from the rear rank of the Company in front.

QUESTIONS:

ANSWERS.

29. If it be in front of a Company, and suppose Light Infantry.

I run out as in the above instance, but first face the column to cover, leaving *three* paces, (because I must leave room for my rear rank,) and then go about.

30. If the Battalion forms close column (either flank in front) on a central company, and you are covering Serjeant of the named company.

I move in front of the proper pivot flank a sufficient distance to admit the other companies into column, and I cover in the new direction, thus giving a point upon which the companies that form in rear of my company may cover.

31. If the column deploys on a central company and you are covering serjeant of the named company, and in alignment with the leading division.

I immediately step forward to the front of the column opposite one of the flank men of the company, and face inwards, thus giving a point from which my company may dress when it comes into the new Line.

32. If the Battalion changes front by the march in Echellon.

Upon the caution being given to *wheel up*, or *wheel back* any given number of paces, I move quickly to the eighth file, (always from the standing flank,) if to wheel forward the file of the front rank, if *backward*, the file of the rear rank, take the number of paces to the hand directed, and dress with the pivot man. I remain steady until the company is perfectly dressed; I then take post on the outward flank. As soon as the company reaches within eight paces of the Line to be formed, I run out and

QUESTIONS.

ANSWERS.

32. If the leading file of the leading Division or Section is ordered to take up the covering, and remain there until the third company from me has received the word "*Eyes front.*"

take up the covering, and remain there until the third company from me has received the word "*Eyes front.*"

33. If Echelon of subdivisions or sections.

I take command according to the number of Officers present. If there are Officers to each Division or Section, I cover the second file from the Pivot of the leading Subdivision or Section.

34. If the battalion advances or retires in Line.

I don't attempt to assist in dressing my company, but look straight before me, observe perfect squareness in my own person, and keep the proper cadence and dressing as every other individual should.

35. If by alternate companies.

I do not follow my Officer to the inward flank.

36. The battalion retires by "*Threes,*" from the right or left of companies.

I place myself in front of the centre man of the leading section of "*Threes,*" until I get within ten paces of the line about to be taken up, when I run forward and cover quickly; I remain steady until my company receives the word "*Eyes front,*" I then fall to the rear and cover the second file from the pivot flank.

or
or

fro
of

pac
giv

of
on
divi
form
cent
ing
are
a ce

4
line
Align
rear
to
cov
pany

QUESTIONS.

ANSWERS.

37. Your company is ordered to close the right or left by the side step.

As soon as the Officer steps out to the front I take his place in the front rank.

38. When you change from one flank to another of your company.

Invariably I change round the rear.

39. What number of paces are required for a given number of files.

I first calculate on two-thirds and add an inch afterwards for each file I take distance for.

40. A double column of Sub-divisions (formed on the two centre Sub-divisions) is ordered to form line on the two centre Sub-divisions facing to the rear, and you are covering Sergeant of a centre company.

Upon the caution, I change places with the Sergeant of the other Centre Company by rear of our Divisions, and take care to leave sufficient room for the Colours to resume their position in line.

41. The formation to line is required upon the Alignment of the two rear sub-divisions facing to the rear, and you are coverer of a centre company.

I change place with the Coverer of the other centre Company, and move along the flanks of the Column, and take up the alignment of the rear Division.

QUESTIONS.

42. When retiring in double column of Sub-divisions from the centre it is intended to form line to the former rear, and you are a Sergeant dividing two Sub-divisions.

43. A battalion halted in line is to change front to the rear upon the centre, and you are coverer of a centre company.

44. When the battalion is to change position on a central halted company, by the flank march of companies by *Threes* and that one wing is thrown forward and the other backward, and you coverer of the named company.

45. A column of companies is ordered to form grand division squares, and you are coverer of a right company.

ANSWERS.

When on the march, the wings receive the order "*Inwards turn*," I mark time until the word "*front turn*" is given.

Upon the caution I change places with the other centre Sergeant, and take up the new point of formation, covering upon a centre Sergeant.

As soon as the Company has wheeled sufficiently back, I run out, cover in the new direction and mark the wheeling point of the Company. The Sergeant of the Company on my right (or left, if the company has wheeled back on its right,) takes distance for his company from me.

On my company receiving the word, "*By Sub-divisions on your Centre four paces backwards wheel*" I take up four paces from the outer flank; another Sergeant likewise marks the four paces from the other flank.

QUESTIONS.

ANSWERS.

46. A Column formed at quarter distance is ordered to change its front and wings by forming four deep.

While my Company is passing through the intervals of the other Companies, I place myself in rear of the pivot file.

Questions to the Centre Sergeants.

1. The Line is ordered to advance, and you are Centre Directing Sergeant.

Immediately on the caution "*The Line will advance;*" I fix on points, and march six paces direct to my front, taking great care that my body is parallel in the Line, pay attention and conform to the directions I may receive from the Adjutant or other officer in rear of the centre. And on being informed that I am perfectly square placed (should he not have ordered me to march on any particular object,) cast my eyes down the centre of my body to the point of junction of my heels, carrying forward an imaginary line perpendicular to my own front and to that of the Battalion, and fix on a point at 100, or 150 paces distant, and afterwards take up an intermediate one, and march direct on them, selecting others as I successively approach the nearest of these points, so as never to have less than two.

QUESTIONS.

ANSWERS.

2. State the Duties of the other Centre Sergeants when the Line is ordered to Advance.

The instant the directing Sergeant moves out of the front rank, the two Sergeants who cover the Colours pass quickly through the interval and place themselves in front of them. The Sergeant in the rear rank who covered the directing Sergeant moves into the front rank between the colours, the Sergeant in the supernumerary rank moves into the rear rank and covers the King's Colour;—on the word "*Steady*" being given by the mounted Officer in the rear, the two Sergeants who moved in front of the Colours step off in quick time and align themselves upon the one already posted. The Sergeant between the Colours must be very particular during the advance, to correctly cover the directing Sergeant and step with him.

3. The Line is ordered to Retire.

On the caution, the centre Sergeants face to the right about, the Sergeant who covers the directing Sergeant takes an oblique pace to his left, to allow the directing Sergeant to take his six paces from the rear rank. The other arrangements are the same as directed for the advance.

4. When the Battalion Advances or Retires by Alternate companies.

The centre directing Sergeant and King's Colour remain with the right centre company, also the Sergeant in the supernumerary rank. The Sergeant who covers the directing Sergeant and Regimental

Ad
Ha

6
adv
der

1.
Com

2.
into

QUESTIONS.

ANSWERS.

Colour remains with the left centre company. In either advancing or retiring, the two former Sergeants move out six paces, the same as directed for the advance or retreat of the line.

5. When the battalion Advances or retires by Half Battalions.

The arrangements are the same as directed for the advance or retreat of alternate companies.

6. When the Battalion advancing in Line is ordered to Charge.

Immediately upon the caution, "Prepare to Charge," the advanced Sergeants mark time until the Line reaches them, when they will place themselves in their relative situations.

Memorandums for Supernumerary Sergeants.

1. In Open Column of Companies.

Supernumerary Sergeants are divided in the rear of their respective companies, at two paces distance from the rear rank, so as that each shall have a portion under his eye, keep the men steady and make them lock up well, and prevent running in wheeling, &c. &c.

2. Companies wheeled into Line.

They wheel up with their companies and remain in the same situation as above, except that they are *three* paces, instead of *two*, from the rear rank.

QUESTIONS.

ANSWERS.

3. Marching past to Salute in slow or quick time.

They are three paces in rear of their companies, dressing by the right.

Marching past in quick time.

They are one pace in rear of their Companies.

4. In Close Column of Divisions.

They are upon the reverse flank of the Column.

5. When they Deploy.

They move to the rear, forming a line. Sergeants of Grenadiers on the right, and so on, and *half front* with their companies.

6. If Close Column of Grand Divisions.

They fall to the rear of the Column, forming a line there. Sergeants of Grenadiers on the right, and so on.

7. The Column of Grand Divisions deploys.

They face with the column, halt when their companies do, close up, and move with them up into line.

8. Whenever in Close Column, it becomes necessary for the Officer to change his flank.

They always wait until he has changed, and then they shift, so as not to meet each other.

9. If you are Supernumerary Sergeant of a Central Company upon which a Close Column is formed.

If there are no markers, I fall to the rear a sufficient number of paces to admit the companies that are filing into column, and I cover carefully in the new Line; thus giving a point upon which the Covering Sergeants of the companies in front of mine take their direction.

QUESTIONS.

ANSWERS.

10. If you are Supernumerary Sergeant of the Central Company upon which the Column deploys and forms line.

Immediately upon the caution, I move up with the Covering Sergeants and face inwards, so as to form a base for the Company when marching up.

11. If a Column of Divisions breaks into Column of Sub-divisions.

The Supernumerary Sergeants follow the movements of the Sub-divisions in rear of which they find themselves.

12. If a Column of Divisions breaks into Sections.

They take charge according to seniority, of the rear Sections (if there are no Officers); if there are Officers they remain in rear of their sections, and follow their movements.

MEMORANDA.

In short, at all times when the Company breaks into Sub-divisions or Sections, the supernumerary Sergeants follow the movements of the particular part of the company immediately in their front, and except in Close Columns (when they take post upon the reverse flank) they are at all times in rear of their companies, and so divided as that each Sergeant shall have a portion of it under his eye, to make the ranks lock well up, to keep the men steady, and to prevent running in wheeling, &c. &c.

