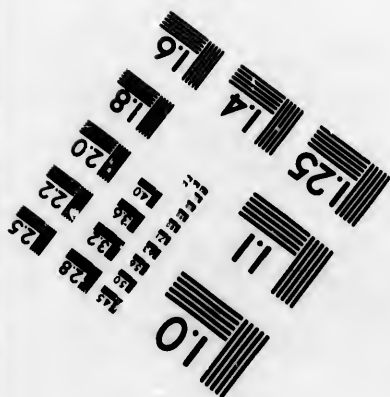
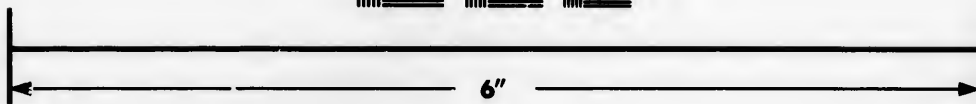
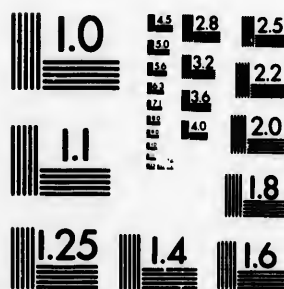


**IMAGE EVALUATION
TEST TARGET (MT-3)**



**Photographic
Sciences
Corporation**

23 WEST MAIN STREET
WEBSTER, N.Y. 14580
(716) 872-4503

**CIHM/ICMH
Microfiche
Series.**

**CIHM/ICMH
Collection de
microfiches.**



Canadian Institute for Historical Microreproductions / Institut canadien de microreproductions historiques

© 1982

Technical and Bibliographic Notes/Notes techniques et bibliographiques

The Institute has attempted to obtain the best original copy available for filming. Features of this copy which may be bibliographically unique, which may alter any of the images in the reproduction, or which may significantly change the usual method of filming, are checked below.

L'Institut a microfilmé le meilleur exemplaire qu'il lui a été possible de se procurer. Les détails de cet exemplaire qui sont peut-être uniques du point de vue bibliographique, qui peuvent modifier une image reproduite, ou qui peuvent exiger une modification dans la méthode normale de filmage sont indiqués ci-dessous.

- | | |
|--|--|
| <input checked="" type="checkbox"/> Coloured covers/
Couverture de couleur | <input type="checkbox"/> Coloured pages/
Pages de couleur |
| <input type="checkbox"/> Covers damaged/
Couverture endommagée | <input type="checkbox"/> Pages damaged/
Pages endommagées |
| <input type="checkbox"/> Covers restored and/or laminated/
Couverture restaurée et/ou pelliculée | <input type="checkbox"/> Pages restored and/or laminated/
Pages restaurées et/ou pelliculées |
| <input type="checkbox"/> Cover title missing/
Le titre de couverture manque | <input type="checkbox"/> Pages discoloured, stained or foxed/
Pages décolorées, tachetées ou piquées |
| <input type="checkbox"/> Coloured maps/
Cartes géographiques en couleur | <input type="checkbox"/> Pages detached/
Pages détachées |
| <input type="checkbox"/> Coloured ink (i.e. other than blue or black)/
Encre de couleur (i.e. autre que bleue ou noire) | <input type="checkbox"/> Showthrough/
Transparence |
| <input type="checkbox"/> Coloured plates and/or illustrations/
Planches et/ou illustrations en couleur | <input type="checkbox"/> Quality of print varies/
Qualité inégale de l'impression |
| <input type="checkbox"/> Bound with other material/
Relié avec d'autres documents | <input type="checkbox"/> Includes supplementary material/
Comprend du matériel supplémentaire |
| <input type="checkbox"/> Tight binding may cause shadows or distortion
along interior margin/
La reliure serrée peut causer de l'ombre ou de la
distortion le long de la marge intérieure | <input type="checkbox"/> Only edition available/
Seule édition disponible |
| <input type="checkbox"/> Blank leaves added during restoration may
appear within the text. Whenever possible, these
have been omitted from filming/
Il se peut que certaines pages blanches ajoutées
lors d'une restauration apparaissent dans le texte,
mais, lorsque cela était possible, ces pages n'ont
pas été filmées. | <input type="checkbox"/> Pages wholly or partially obscured by errata
slips, tissues, etc., have been refilmed to
ensure the best possible image/
Les pages totalement ou partiellement
obscurcies par un feuillet d'errata, une pelure,
etc., ont été filmées à nouveau de façon à
obtenir la meilleure image possible. |
| <input type="checkbox"/> Additional comments:/
Commentaires supplémentaires: | |

This item is filmed at the reduction ratio checked below/
Ce document est filmé au taux de réduction indiqué ci-dessous.

10X	14X	18X	22X	26X	30X
<input type="checkbox"/>	<input type="checkbox"/>	<input type="checkbox"/>	<input type="checkbox"/>	<input checked="" type="checkbox"/>	<input type="checkbox"/>
12X	16X	20X	24X	28X	32X

The copy filmed here has been reproduced thanks to the generosity of:

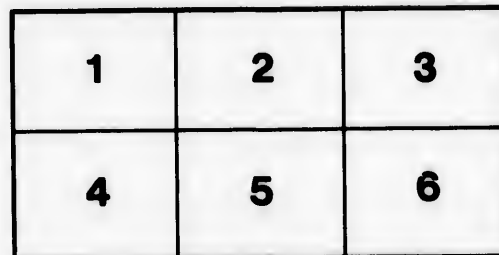
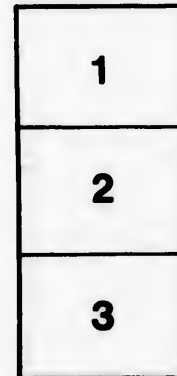
Library of Congress
Photoduplication Service

The images appearing here are the best quality possible considering the condition and legibility of the original copy and in keeping with the filming contract specifications.

Original copies in printed paper covers are filmed beginning with the front cover and ending on the last page with a printed or illustrated impression, or the back cover when appropriate. All other original copies are filmed beginning on the first page with a printed or illustrated impression, and ending on the last page with a printed or illustrated impression.

The last recorded frame on each microfiche shall contain the symbol → (meaning "CONTINUED"), or the symbol ▼ (meaning "END"), whichever applies.

Maps, plates, charts, etc., may be filmed at different reduction ratios. Those too large to be entirely included in one exposure are filmed beginning in the upper left hand corner, left to right and top to bottom, as many frames as required. The following diagrams illustrate the method:



L'exemplaire filmé fut reproduit grâce à la générosité de:

Library of Congress
Photoduplication Service

Les images suivantes ont été reproduites avec le plus grand soin, compte tenu de la condition et de la netteté de l'exemplaire filmé, et en conformité avec les conditions du contrat de filmage.

Les exemplaires originaux dont la couverture en papier est imprimée sont filmés en commençant par le premier plat et en terminant soit par la dernière page qui comporte une empreinte d'impression ou d'illustration, soit par le second plat, selon le cas. Tous les autres exemplaires originaux sont filmés en commençant par la première page qui comporte une empreinte d'impression ou d'illustration et en terminant par la dernière page qui comporte une telle empreinte.

Un des symboles suivants apparaîtra sur la dernière image de chaque microfiche, selon le cas: le symbole → signifie "A SUIVRE", le symbole ▼ signifie "FIN".

Les cartes, planches, tableaux, etc., peuvent être filmés à des taux de réduction différents. Lorsque le document est trop grand pour être reproduit en un seul cliché, il est filmé à partir de l'angle supérieur gauche, de gauche à droite, et de haut en bas, en prenant le nombre d'images nécessaire. Les diagrammes suivants illustrent la méthode.

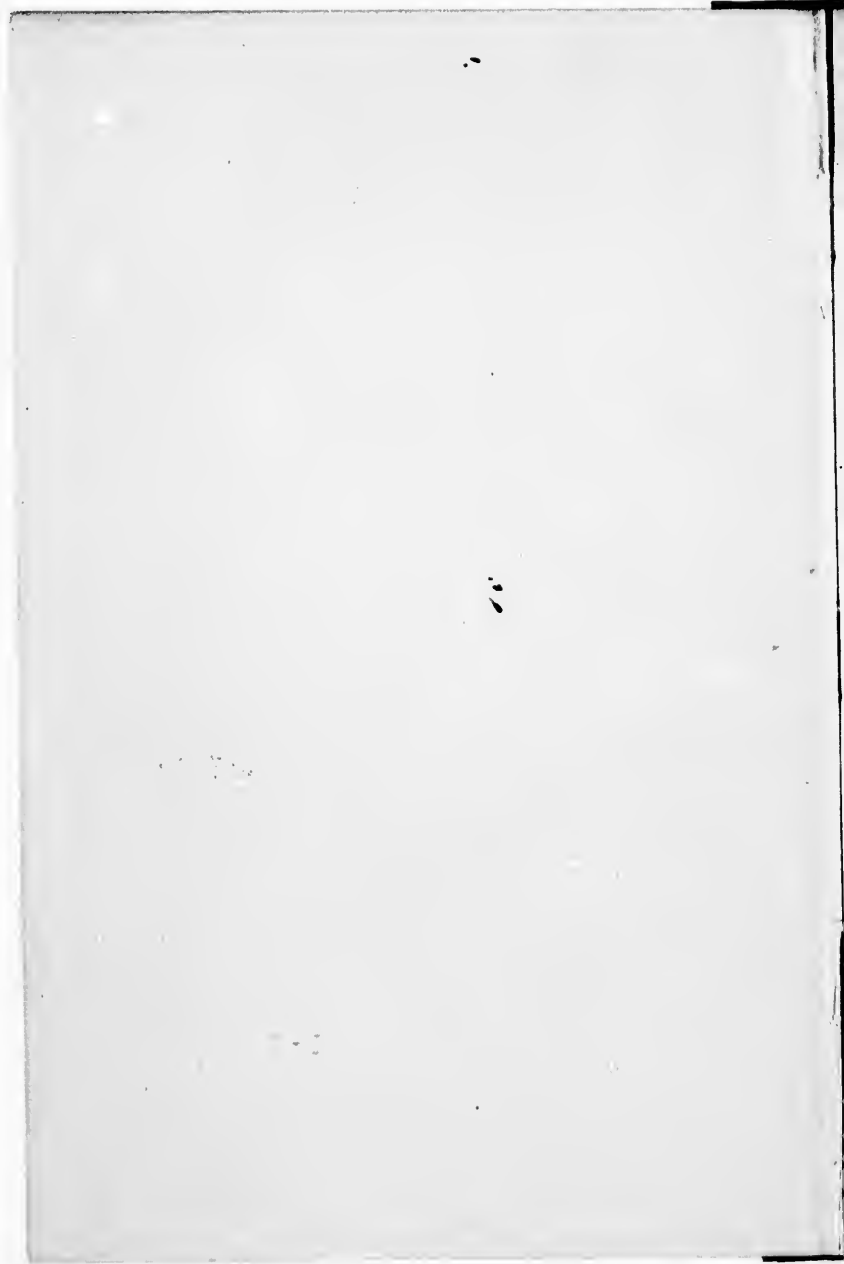
tails
du
odifier
une
image

s

errata
to

pelure,
on à

32X



HALF-YEARLY
AND
QUARTERLY

LIFE INSURANCE PREMIUMS.

Price, Bound in Red Cloth, \$1.

✓
BY ARTHUR BOURNE,
148 HENRY STREET,
BROOKLYN, N. Y.



28614 ad

Copyright, 1895, by Arthur Bourne.

HG 8853
·B77

53

Mar. 6. Sep. 17, '06.

PUBLISHER'S NOTE.

THIS book is intended for the use of Agents of all the Life Insurance Companies throughout the United States and Canada, and will prove of great assistance in the computation of the Semi-Annual and Quarterly Premiums, as by its use accuracy is assured and figuring and time saved.

Besides the benefits derived by the agents, it is the hope of the compiler that the book will be found acceptable in the home offices of the life insurance companies as well.

It has been observed that a number of the companies are not in the habit of publishing the Semi-Annual and Quarterly premiums, so that this book will certainly be of advantage, in any case, to all such. It is also the wish that the companies which have heretofore published the Semi-Annual and Quarterly Premiums, and circulated them freely and generously through their agents, might be in some measure spared this expense.

Below will be found examples in order that the agents will the more readily grasp the workings of the tables, and as *Half-yearly Table 4* and *Quarterly Table 6*, are perhaps the more commonly made use of, the illustrations will be taken from those tables.

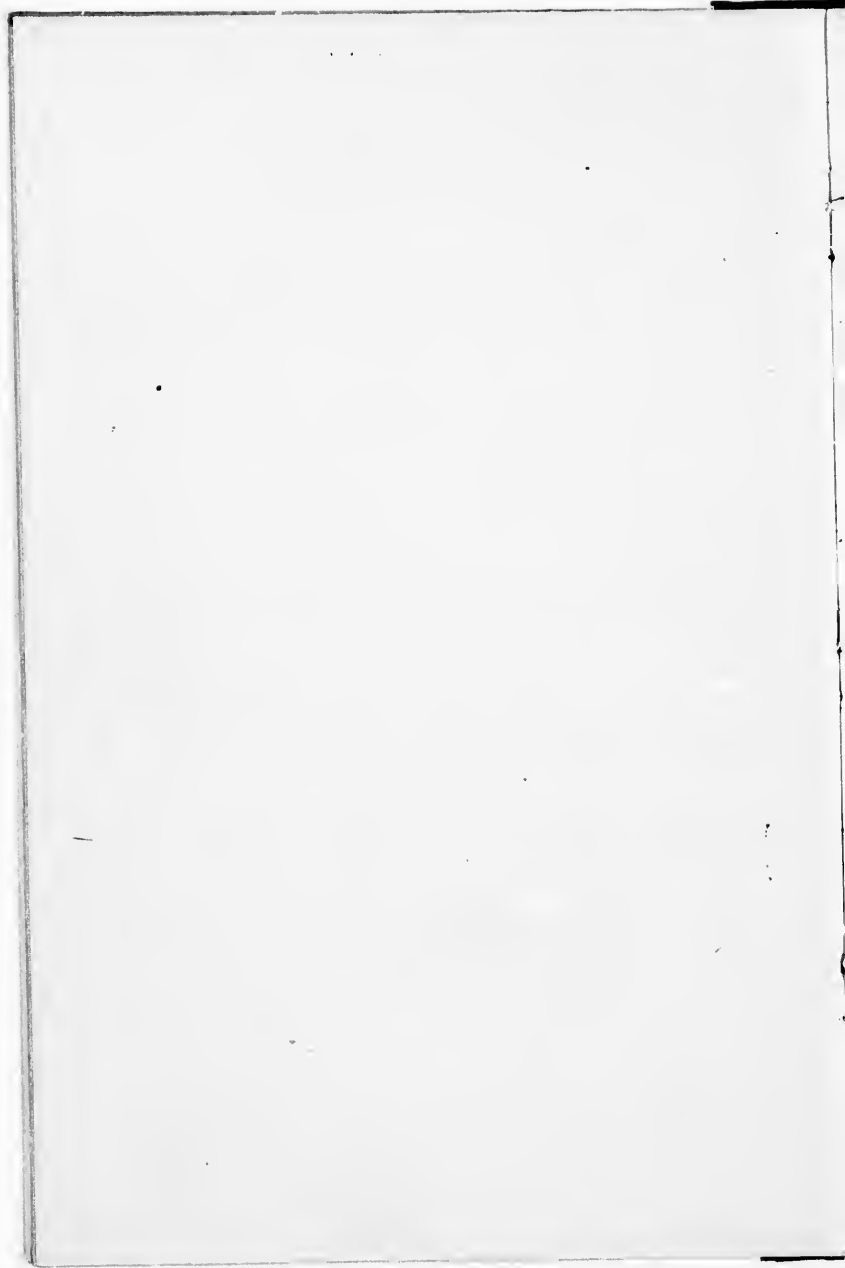
	<i>Table 4. Half-yearly.</i>	<i>Table 6. Quarterly.</i>
Say the Annual Premium is \$38.83.		
Look for 38(8) and you will find, .	\$19.76	\$10.07
" 83(c.) " " "	43.16	21.99.5
Add,	\$20.19.16	\$10.28.99.5

It will obviously be seen that the important thing is first to fully understand the placing of the decimal and in this a mere glance will suffice to reassure one, for example :

Figures from the same line	<i>Table 4. Half yearly.</i>	<i>Table 6. Quarterly.</i>
\$1.	\$00.52	\$000.26.50
\$10.	005.20	002.65
\$100.	052.00	026.50
\$1,000.	520.00	265.

Enough by way of illustration, and the author trusts that the book will find a ready sale and be welcomed by the insurance fraternity.

A. B.



HALF-YEARLY.

HALF-YEARLY.

	2%		2%		2 1/2%		2 1/2%
1	\$.51	51	\$26.01	1	\$.51.25	51	\$26.13.75
2	1.02	52	26.52	2	1.02.50	52	26.65.00
3	1.53	53	27.03	3	1.53.75	53	27.16.25
4	2.04	54	27.54	4	2.05.00	54	27.67.50
5	2.55	55	28.05	5	2.56.25	55	28.18.75
6	3.06	56	28.56	6	3.07.50	56	28.70.00
7	3.57	57	29.07	7	3.58.75	57	29.21.25
8	4.08	58	29.58	8	4.10.00	58	29.72.50
9	4.59	59	30.09	9	4.61.25	59	30.23.75
10	5.10	60	30.60	10	5.12.50	60	30.75.00
11	5.61	61	31.11	11	5.63.75	61	31.26.25
12	6.12	62	31.62	12	6.15.00	62	31.77.50
13	6.63	63	32.13	13	6.66.25	63	32.28.75
14	7.14	64	32.64	14	7.17.50	64	32.80.00
15	7.65	65	33.15	15	7.68.75	65	33.31.25
16	8.16	66	33.66	16	8.20.00	66	33.82.50
17	8.67	67	34.17	17	8.71.25	67	34.33.75
18	9.18	68	34.68	18	9.22.50	68	34.85.00
19	9.69	69	35.19	19	9.73.75	69	35.36.25
20	10.20	70	35.70	20	10.25.00	70	35.87.50
21	10.71	71	36.21	21	10.76.25	71	36.38.75
22	11.22	72	36.72	22	11.27.50	72	36.90.00
23	11.73	73	37.23	23	11.78.75	73	37.41.25
24	12.24	74	37.74	24	12.30.00	74	37.92.50
25	12.75	75	38.25	25	12.81.25	75	38.43.75
26	13.26	76	38.76	26	13.32.50	76	38.95.00
27	13.77	77	39.27	27	13.83.75	77	39.46.25
28	14.28	78	39.78	28	14.35.00	78	39.97.50
29	14.79	79	40.29	29	14.86.25	79	40.48.75
30	15.30	80	40.80	30	15.37.50	80	41.00.00
31	15.81	81	41.31	31	15.88.75	81	41.51.25
32	16.32	82	41.82	32	16.40.00	82	42.02.50
33	16.83	83	42.33	33	16.91.25	83	42.53.75
34	17.34	84	42.84	34	17.42.50	84	43.05.00
35	17.85	85	43.35	35	17.93.75	85	43.56.25
36	18.36	86	43.86	36	18.45.00	86	44.07.50
37	18.87	87	44.37	37	18.96.25	87	44.58.75
38	19.38	88	44.88	38	19.47.50	88	45.10.00
39	19.89	89	45.39	39	19.98.75	89	45.61.25
40	20.40	90	45.90	40	20.50.00	90	46.12.50
41	20.91	91	46.41	41	21.01.25	91	46.63.75
42	21.42	92	46.92	42	21.52.50	92	47.15.00
43	21.93	93	47.43	43	22.03.75	93	47.66.25
44	22.44	94	47.94	44	22.55.00	94	48.17.50
45	22.95	95	48.45	45	23.06.25	95	48.68.75
46	23.46	96	48.96	46	23.57.50	96	49.20.00
47	23.97	97	49.47	47	24.08.75	97	49.71.25
48	24.48	98	49.98	48	24.60.00	98	50.22.50
49	24.99	99	50.49	49	25.11.25	99	50.73.75
50	25.50	100	51.00	50	25.62.50	100	51.25.00

HALF-YEARLY.

HALF-YEARLY.

HALF-YEARLY.				HALF-YEARLY.			
	3%		3%		3 1/8%		3 1/8%
1	\$ 51.5	51	\$26.26.5	1	\$.51.85	51	\$26.44.35
2	1.03.0	52	26.78.0	2	1.03.70	52	26.96.20
3	1.54.5	53	27.29.5	3	1.55.55	53	27.48.05
4	2.06.0	54	27.81.0	4	2.07.40	54	27.99.90
5	2.57.5	55	28.32.5	5	2.59.25	55	28.51.75
6	3.09.0	56	28.84.0	6	3.11.10	56	29.03.60
7	3.60.5	57	29.35.5	7	3.62.95	57	29.55.45
8	4.12.0	58	29.87.0	8	4.14.80	58	30.07.30
9	4.63.5	59	30.38.5	9	4.66.65	59	30.59.15
10	5.15.0	60	30.90.0	10	5.18.50	60	31.11.00
11	5.66.5	61	31.41.5	11	5.70.35	61	31.62.85
12	6.18.0	62	31.93.0	12	6.22.20	62	32.14.70
13	6.69.5	63	32.44.5	13	6.74.05	63	32.66.55
14	7.21.0	64	32.96.0	14	7.25.90	64	33.18.40
15	7.72.5	65	33.47.5	15	7.77.75	65	33.70.25
16	8.24.0	66	33.99.0	16	8.29.60	66	34.22.10
17	8.75.5	67	34.50.5	17	8.81.45	67	34.73.95
18	9.27.0	68	35.02.0	18	9.33.30	68	35.25.80
19	9.78.5	69	35.53.5	19	9.85.15	69	35.77.65
20	10.30.0	70	36.05.0	20	10.37.00	70	36.29.50
21	10.81.5	71	36.56.5	21	10.88.85	71	36.81.35
22	11.33.0	72	37.08.0	22	11.40.70	72	37.33.20
23	11.84.5	73	37.59.5	23	11.92.55	73	37.85.05
24	12.36.0	74	38.11.0	24	12.44.40	74	38.36.90
25	12.87.5	75	38.62.5	25	12.96.25	75	38.88.75
26	13.39.0	76	39.14.0	26	13.48.10	76	39.40.60
27	13.90.5	77	39.65.5	27	13.99.95	77	39.92.45
28	14.42.0	78	40.17.0	28	14.51.80	78	40.44.30
29	14.93.5	79	40.68.5	29	15.03.65	79	40.96.15
30	15.45.0	80	41.20.0	30	15.55.50	80	41.48.00
31	15.96.5	81	41.71.5	31	16.07.35	81	41.99.85
32	16.48.0	82	42.23.0	32	16.59.20	82	42.51.70
33	16.99.5	83	42.74.5	33	17.11.05	83	43.03.55
34	17.51.0	84	43.26.0	34	17.62.90	84	43.55.40
35	18.02.5	85	43.77.5	35	18.14.75	85	44.07.25
36	18.54.0	86	44.29.0	36	18.66.60	86	44.59.10
37	19.05.5	87	44.80.5	37	19.18.45	87	45.10.95
38	19.57.0	88	45.32.0	38	19.70.30	88	45.62.80
39	20.08.5	89	45.83.5	39	20.22.15	89	46.14.65
40	20.60.0	90	46.35.0	40	20.74.00	90	46.66.50
41	21.11.5	91	46.86.5	41	21.25.85	91	47.18.35
42	21.63.0	92	47.38.0	42	21.77.70	92	47.70.20
43	22.14.5	93	47.89.5	43	22.29.55	93	48.22.05
44	22.66.0	94	48.41.0	44	22.81.40	94	48.73.90
45	23.17.5	95	48.92.5	45	23.33.25	95	49.25.75
46	23.69.0	96	49.44.0	46	23.85.10	96	49.77.60
47	24.20.5	97	49.95.5	47	24.36.95	97	50.29.45
48	24.72.0	98	50.47.0	48	24.88.80	98	50.81.30
49	25.23.5	99	50.98.5	49	25.40.65	99	51.33.15
50	25.75.0	100	51.50.0	50	25.92.50	100	51.85.00

RLY.

HALF-YEARLY.

HALF-YEARLY.

	3 1/2 %
1	\$26.44.35
2	26.96.20
3	27.48.05
4	27.99.90
5	28.51.75
6	29.03.60
7	29.55.45
8	30.07.30
9	30.59.15
0	31.11.00
1	31.62.85
2	32.14.70
3	32.66.55
4	33.18.40
5	33.70.25
6	34.22.10
7	34.73.95
8	35.25.80
9	35.77.65
0	36.29.50
1	36.81.35
2	37.33.20
3	37.85.05
4	38.36.90
5	38.88.75
6	39.40.60
7	39.92.45
8	40.44.30
9	40.96.15
0	41.48.00
1	41.99.85
2	42.51.70
3	43.03.55
4	43.55.40
5	44.07.25
6	44.59.10
7	45.10.95
8	45.62.80
9	46.14.65
0	46.66.50
1	47.18.35
2	47.70.20
3	48.22.05
4	48.73.90
5	49.25.75
6	49.77.60
7	50.29.45
8	50.81.30
9	51.33.15
0	51.85.00

	4%	4%
\$1	\$.52	\$51 \$26.52
2	1.04	52 27.04
3	1.56	53 27.56
4	2.08	54 28.08
5	2.60	55 28.60
6	3.12	56 29.12
7	3.64	57 29.64
8	4.16	58 30.16
9	4.68	59 30.68
10	5.20	60 31.20
11	5.72	61 31.72
12	6.24	62 32.24
13	6.76	63 32.76
14	7.28	64 33.28
15	7.80	65 33.80
16	8.32	66 34.32
17	8.84	67 34.84
18	9.36	68 35.36
19	9.88	69 35.88
20	10.40	70 36.40
21	10.92	71 36.92
22	11.44	72 37.44
23	11.96	73 37.96
24	12.48	74 38.48
25	13.00	75 39.00
26	13.52	76 39.52
27	14.04	77 40.04
28	14.56	78 40.56
29	15.08	79 41.08
30	15.60	80 41.60
31	16.12	81 42.12
32	16.64	82 42.64
33	17.16	83 43.16
34	17.68	84 43.68
35	18.20	85 44.20
36	18.72	86 44.72
37	19.24	87 45.24
38	19.76	88 45.76
39	20.28	89 46.28
40	20.80	90 46.80
41	21.32	91 47.32
42	21.84	92 47.84
43	22.36	93 48.36
44	22.88	94 48.88
45	23.40	95 49.40
46	23.92	96 49.92
47	24.44	97 50.44
48	24.96	98 50.96
49	25.48	99 51.48
50	26.00	100 52.00

	5%	5%
\$1	\$.52.5	\$51 \$26.77.5
2	1.05.0	52 27.30.0
3	1.57.5	53 27.82.5
4	2.10.0	54 28.35.0
5	2.62.5	55 28.87.5
6	3.15.0	56 29.40.0
7	3.67.5	57 29.92.5
8	4.20.0	58 30.45.0
9	4.72.5	59 30.97.5
10	5.25.0	60 31.50.0
11	5.77.5	61 32.02.5
12	6.30.0	62 32.55.0
13	6.82.5	63 33.07.5
14	7.35.0	64 33.60.0
15	7.87.5	65 34.12.5
16	8.40.0	66 34.65.0
17	8.92.5	67 35.17.5
18	9.45.0	68 35.70.0
19	9.97.5	69 36.22.5
20	10.50.0	70 36.75.0
21	11.02.5	71 37.27.5
22	11.55.0	72 37.80.0
23	12.07.5	73 38.32.5
24	12.60.0	74 38.85.0
25	13.12.5	75 39.37.5
26	13.65.0	76 39.90.0
27	14.17.5	77 40.42.5
28	14.70.0	78 40.95.0
29	15.22.5	79 41.47.5
30	15.75.0	80 42.00.0
31	16.27.5	81 42.52.5
32	16.80.0	82 43.05.0
33	17.32.5	83 43.57.5
34	17.85.0	84 44.10.0
35	18.37.5	85 44.62.5
36	18.90.0	86 45.15.0
37	19.42.5	87 45.67.5
38	19.95.0	88 46.20.0
39	20.47.5	89 46.72.5
40	21.00.0	90 47.25.0
41	21.52.5	91 47.77.5
42	22.05.0	92 48.30.0
43	22.57.5	93 48.82.5
44	23.10.0	94 49.35.0
45	23.62.5	95 49.87.5
46	24.15.0	96 50.40.0
47	24.67.5	97 50.92.5
48	25.20.0	98 51.45.0
49	25.72.5	99 51.97.5
50	26.25.0	100 52.50.0

HALF-YEARLY.

QUARTERLY.

HALF-YEARLY.				QUARTERLY.			
	6%		6%		3%		3%
1	\$.53	51	\$27.03	1	\$.25.75	51	\$13.13.25
2	1.06	52	27.56	2	.51.50	52	13.39.00
3	1.59	53	28.09	3	.77.25	53	13.64.75
4	2.12	54	28.62	4	1.03.00	54	13.90.50
5	2.65	55	29.15	5	1.28.75	55	14.16.25
6	3.18	56	29.68	6	1.54.50	56	14.42.00
7	3.71	57	30.21	7	1.80.25	57	14.67.75
8	4.24	58	30.74	8	2.06.00	58	14.93.50
9	4.77	59	31.27	9	2.31.75	59	15.19.25
10	5.30	60	31.80	10	2.57.50	60	15.45.00
11	5.83	61	32.33	11	2.83.25	61	15.70.75
12	6.36	62	32.86	12	3.09.00	62	15.96.50
13	6.89	63	33.39	13	3.34.75	63	16.22.25
14	7.42	64	33.92	14	3.60.50	64	16.48.00
15	7.95	65	34.45	15	3.86.25	65	16.73.75
16	8.48	66	34.98	16	4.12.00	66	16.99.50
17	9.01	67	35.51	17	4.37.75	67	17.25.25
18	9.54	68	36.04	18	4.63.50	68	17.51.00
19	10.07	69	36.57	19	4.89.25	69	17.76.75
20	10.60	70	37.10	20	5.15.00	70	18.02.50
21	11.13	71	37.63	21	5.40.75	71	18.28.25
22	11.66	72	38.16	22	5.66.50	72	18.54.00
23	12.19	73	38.69	23	5.92.25	73	18.79.75
24	12.72	74	39.22	24	6.18.00	74	19.05.50
25	13.25	75	39.75	25	6.43.75	75	19.31.25
26	13.78	76	40.28	26	6.69.50	76	19.57.00
27	14.31	77	40.81	27	6.95.25	77	19.82.75
28	14.84	78	41.34	28	7.21.00	78	20.08.50
29	15.37	79	41.87	29	7.46.75	79	20.34.25
30	15.90	80	42.40	30	7.72.50	80	20.60.00
31	16.43	81	42.93	31	7.98.25	81	20.85.75
32	16.96	82	43.46	32	8.24.00	82	21.11.50
33	17.49	83	43.99	33	8.49.75	83	21.37.25
34	18.02	84	44.52	34	8.75.50	84	21.63.00
35	18.55	85	45.05	35	9.01.25	85	21.88.75
36	19.08	86	45.58	36	9.27.00	86	22.14.50
37	19.61	87	46.11	37	9.52.75	87	22.40.25
38	20.14	88	46.64	38	9.78.50	88	22.66.00
39	20.67	89	47.17	39	10.04.25	89	22.91.75
40	21.20	90	47.70	40	10.30.00	90	23.17.50
41	21.73	91	48.23	41	10.55.75	91	23.43.25
42	22.26	92	48.76	42	10.81.50	92	23.69.00
43	22.79	93	49.29	43	11.07.25	93	23.94.75
44	23.32	94	49.82	44	11.33.00	94	24.20.50
45	23.85	95	50.35	45	11.58.75	95	24.46.25
46	24.38	96	50.88	46	11.84.50	96	24.72.00
47	24.91	97	51.41	47	12.10.25	97	24.97.75
48	25.44	98	51.94	48	12.36.00	98	25.23.50
49	25.97	99	52.47	49	12.61.75	99	25.49.25
50	26.50	100	53.00	50	12.87.50	100	25.75.00

Y.

	3%
1	\$13.13.25
2	13.39.00
3	13.64.75
4	13.90.50
5	14.16.25
6	14.42.00
7	14.67.75
8	14.93.50
9	15.19.25
10	15.45.00
11	15.70.75
12	15.96.50
13	16.22.25
14	16.48.00
15	16.73.75
16	16.99.50
17	17.25.25
18	17.51.00
19	17.76.75
20	18.02.50
21	18.28.25
22	18.54.00
23	18.79.75
24	19.05.50
25	19.31.25
26	19.57.00
27	19.82.75
28	20.08.50
29	20.34.25
30	20.60.00
31	20.85.75
32	21.11.50
33	21.37.25
34	21.63.00
35	21.88.75
36	22.14.50
37	22.40.25
38	22.66.00
39	22.91.75
40	23.17.50
41	23.43.25
42	23.69.00
43	23.94.75
44	24.20.50
45	24.46.25
46	24.72.00
47	24.97.75
48	25.23.50
49	25.49.25
50	25.75.00

QUARTERLY.

	4%	5%
1	\$.26	\$13.26
2	.52	13.52
3	.78	13.78
4	1.04	14.04
5	1.30	14.30
6	1.56	14.56
7	1.82	14.82
8	2.08	15.08
9	2.34	15.34
10	2.60	15.60
11	2.86	15.86
12	3.12	16.12
13	3.38	16.38
14	3.64	16.64
15	3.90	16.90
16	4.16	17.16
17	4.42	17.42
18	4.68	17.68
19	4.94	17.94
20	5.20	18.20
21	5.46	18.46
22	5.72	18.72
23	5.98	18.98
24	6.24	19.24
25	6.50	19.50
26	6.76	19.76
27	7.02	20.02
28	7.28	20.28
29	7.54	20.54
30	7.80	20.80
31	8.06	21.06
32	8.32	21.32
33	8.58	21.58
34	8.84	21.84
35	9.10	22.10
36	9.36	22.36
37	9.62	22.62
38	9.88	22.88
39	10.14	23.14
40	10.40	23.40
41	10.66	23.66
42	10.92	23.92
43	11.18	24.18
44	11.44	24.44
45	11.70	24.70
46	11.96	24.96
47	12.22	25.22
48	12.48	25.48
49	12.74	25.74
50	13.00	26.00

QUARTERLY.

	5%	5%
1	\$.26.25	\$13.38.75
2	.52.50	13.65.00
3	.78.75	13.91.25
4	1.05.00	14.17.50
5	1.31.25	14.43.75
6	1.57.50	14.70.00
7	1.83.75	14.96.25
8	2.10.00	15.22.50
9	2.36.25	15.48.75
10	2.62.50	15.75.00
11	2.88.75	16.01.25
12	3.15.00	16.27.50
13	3.41.25	16.53.75
14	3.67.50	16.80.00
15	3.93.75	17.06.25
16	4.20.00	17.32.50
17	4.46.25	17.58.75
18	4.72.50	17.85.00
19	4.98.75	18.11.25
20	5.25.00	18.37.50
21	5.51.25	18.63.75
22	5.77.50	18.90.00
23	6.03.75	19.16.25
24	6.30.00	19.42.50
25	6.56.25	19.68.75
26	6.82.50	19.95.00
27	7.08.75	20.21.25
28	7.35.00	20.47.50
29	7.61.25	20.73.75
30	7.87.50	21.00.00
31	8.13.75	21.26.25
32	8.40.00	21.52.50
33	8.66.25	21.78.75
34	8.92.50	22.05.00
35	9.18.75	22.31.25
36	9.45.00	22.57.50
37	9.71.25	22.83.75
38	9.97.50	23.10.00
39	10.23.75	23.36.25
40	10.50.00	23.62.50
41	10.76.25	23.88.75
42	11.02.50	24.15.00
43	11.28.75	24.41.25
44	11.55.00	24.67.50
45	11.81.25	24.93.75
46	12.07.50	25.20.00
47	12.33.75	25.46.25
48	12.60.00	25.72.50
49	12.86.25	25.98.75
50	13.12.50	26.25.00

QUARTERLY.

QUARTERLY.

QUARTERLY.				QUARTERLY.			
	5½%		5½%		6%		6%.
\$1	\$.26.39	\$51	\$13.45.89	\$1	\$0.26.5	\$51	\$13.51.5
2	.52.78	52	13.72.28	2	0.53.0	52	13.78.0
3	.79.17	53	13.98.67	3	0.79.5	53	14.04.5
4	1.05.56	54	14.25.06	4	1.06.0	54	14.31.0
5	1.31.95	55	14.51.45	5	1.32.5	55	14.57.5
6	1.58.34	56	14.77.84	6	1.59.0	56	14.84.0
7	1.84.73	57	15.04.23	7	1.85.5	57	15.10.5
8	2.11.12	58	15.30.62	8	2.12.0	58	15.37.0
9	2.37.51	59	15.57.01	9	2.38.5	59	15.63.5
10	2.63.90	60	15.83.40	10	2.65.0	60	15.90.0
11	2.90.29	61	16.09.79	11	2.91.5	61	16.16.5
12	3.16.68	62	16.36.18	12	3.18.0	62	16.43.0
13	3.43.07	63	16.62.57	13	3.44.5	63	16.69.5
14	3.69.46	64	16.88.96	14	3.71.0	64	16.96.0
15	3.95.85	65	17.15.35	15	3.97.5	65	17.22.5
16	4.22.24	66	17.41.74	16	4.24.0	66	17.49.0
17	4.48.63	67	17.68.13	17	4.50.5	67	17.75.5
18	4.75.02	68	17.94.52	18	4.77.0	68	18.02.0
19	5.01.41	69	18.20.91	19	5.03.5	69	18.28.5
20	5.27.80	70	18.47.30	20	5.30.0	70	18.55.0
21	5.54.19	71	18.73.69	21	5.56.5	71	18.81.5
22	5.80.58	72	19.00.08	22	5.83.0	72	19.08.0
23	6.06.97	73	19.26.47	23	6.09.5	73	19.34.5
24	6.33.36	74	19.52.86	24	6.36.0	74	19.61.0
25	6.59.75	75	19.79.25	25	6.62.5	75	19.87.5
26	6.86.14	76	20.05.64	26	6.89.0	76	20.14.0
27	7.12.53	77	20.32.03	27	7.15.5	77	20.40.5
28	7.38.92	78	20.58.42	28	7.42.0	78	20.67.0
29	7.65.31	79	20.84.81	29	7.68.5	79	20.93.5
30	7.91.70	80	21.11.20	30	7.95.0	80	21.20.0
31	8.18.09	81	21.37.59	31	8.21.5	81	21.46.5
32	8.44.48	82	21.63.98	32	8.48.0	82	21.73.0
33	8.70.87	83	21.90.37	33	8.74.5	83	21.99.5
34	8.97.26	84	22.16.76	34	9.01.0	84	22.26.0
35	9.23.65	85	22.43.15	35	9.27.5	85	22.52.5
36	9.50.04	86	22.69.54	36	9.54.0	86	22.79.0
37	9.76.43	87	22.95.93	37	9.80.5	87	23.05.5
38	10.02.82	88	23.22.32	38	10.07.0	88	23.32.0
39	10.29.21	89	23.48.71	39	10.33.5	89	23.58.5
40	10.55.60	90	23.75.10	40	10.60.0	90	23.85.0
41	10.81.99	91	24.01.49	41	10.86.5	91	24.11.5
42	11.08.38	92	24.27.88	42	11.13.0	92	24.38.0
43	11.34.77	93	24.54.27	43	11.39.5	93	24.64.5
44	11.61.16	94	24.80.66	44	11.66.0	94	24.91.0
45	11.87.55	95	25.07.05	45	11.92.5	95	25.17.5
46	12.13.94	96	25.33.44	46	12.19.0	96	25.44.0
47	12.40.33	97	25.59.83	47	12.45.5	97	25.70.5
48	12.66.72	98	25.86.22	48	12.72.0	98	25.97.0
49	12.93.11	99	26.12.61	49	12.98.5	99	26.23.5
50	13.19.50	100	26.39.00	50	13.25.0	100	26.50.0

ARTERLY.

		6%.
5.5	51	\$13.51.5
6.0	52	13.78.0
6.5	53	14.04.5
7.0	54	14.31.0
7.5	55	14.57.5
8.0	56	14.84.0
8.5	57	15.10.5
9.0	58	15.37.0
9.5	59	15.63.5
10.0	60	15.90.0
10.5	61	16.16.5
11.0	62	16.43.0
11.5	63	16.69.5
12.0	64	16.96.0
12.5	65	17.22.5
13.0	66	17.49.0
13.5	67	17.75.5
14.0	68	18.02.0
14.5	69	18.28.5
15.0	70	18.55.0
15.5	71	18.81.5
16.0	72	19.08.0
16.5	73	19.34.5
17.0	74	19.61.0
17.5	75	19.87.5
18.0	76	20.14.0
18.5	77	20.40.5
19.0	78	20.67.0
19.5	79	20.93.5
20.0	80	21.20.0
20.5	81	21.46.5
21.0	82	21.73.0
21.5	83	21.99.5
22.0	84	22.26.0
22.5	85	22.52.5
23.0	86	22.79.0
23.5	87	23.05.5
24.0	88	23.32.0
24.5	89	23.58.5
25.0	90	23.85.0
25.5	91	24.11.5
26.0	92	24.38.0
26.5	93	24.64.5
27.0	94	24.91.0
27.5	95	25.17.5
28.0	96	25.44.0
28.5	97	25.70.5
29.0	98	25.97.0
29.5	99	26.23.5
30.0	100	26.50.0

QUARTERLY.

	7%.		7%.
\$1	\$.26.75	\$51	\$13.64.25
2	.53.50	52	13.91.00
3	.80.25	53	14.17.75
4	1.07.00	54	14.44.50
5	1.33.75	55	14.71.25
6	1.60.50	56	14.98.00
7	1.87.25	57	15.24.75
8	2.14.00	58	15.51.50
9	2.40.75	59	15.78.25
10	2.67.50	60	16.05.00
11	2.94.25	61	16.31.75
12	3.21.00	62	16.58.50
13	3.47.75	63	16.85.25
14	3.74.50	64	17.12.00
15	4.01.25	65	17.38.75
16	4.28.00	66	17.65.50
17	4.54.75	67	17.92.25
18	4.81.50	68	18.19.00
19	5.08.25	69	18.45.75
20	5.35.00	70	18.72.50
21	5.61.75	71	18.99.25
22	5.88.50	72	19.26.00
23	6.15.25	73	19.52.75
24	6.42.00	74	19.79.50
25	6.68.75	75	20.06.25
26	6.95.50	76	20.33.00
27	7.22.25	77	20.59.75
28	7.49.00	78	20.86.50
29	7.75.75	79	21.13.25
30	8.02.50	80	21.40.00
31	8.29.25	81	21.66.75
32	8.56.00	82	21.93.50
33	8.82.75	83	22.20.25
34	9.09.50	84	22.47.00
35	9.36.25	85	22.73.75
36	9.63.00	86	23.00.50
37	9.89.75	87	23.27.25
38	10.16.50	88	23.54.00
39	10.43.25	89	23.80.75
40	10.70.00	90	24.07.50
41	10.96.75	91	24.34.25
42	11.23.50	92	24.61.00
43	11.50.25	93	24.87.75
44	11.77.00	94	25.14.50
45	12.03.75	95	25.41.25
46	12.30.50	96	25.68.00
47	12.57.25	97	25.94.75
48	12.84.00	98	26.21.50
49	13.10.75	99	26.48.25
50	13.37.50	100	26.75.00

QUARTERLY.

	7½%.		7½%.
\$1	\$.26.875	\$51	\$13.70.625
2	.53.750	52	13.97.500
3	.80.625	53	14.24.375
4	1.07.500	54	14.51.250
5	1.34.375	55	14.78.125
6	1.61.250	56	15.05.000
7	1.88.125	57	15.31.875
8	2.15.000	58	15.58.750
9	2.41.875	59	15.85.625
10	2.68.750	60	16.12.500
11	2.95.625	61	16.39.375
12	3.22.500	62	16.66.250
13	3.49.375	63	16.93.125
14	3.76.250	64	17.20.000
15	4.03.125	65	17.46.875
16	4.30.000	66	17.73.750
17	4.56.875	67	18.00.625
18	4.83.750	68	18.27.500
19	5.10.625	69	18.54.375
20	5.37.500	70	18.81.250
21	5.64.375	71	19.08.125
22	5.91.250	72	19.35.000
23	6.18.125	73	19.61.875
24	6.45.000	74	19.88.750
25	6.71.875	75	20.15.625
26	6.98.750	76	20.42.500
27	7.25.625	77	20.69.375
28	7.52.500	78	20.96.250
29	7.79.375	79	21.23.125
30	8.06.250	80	21.50.000
31	8.33.125	81	21.76.875
32	8.60.000	82	22.03.750
33	8.86.875	83	22.30.625
34	9.13.750	84	22.57.500
35	9.40.625	85	22.84.375
36	9.67.500	86	23.11.250
37	9.94.375	87	23.38.125
38	10.21.250	88	23.65.000
39	10.48.125	89	23.91.875
40	10.75.000	90	24.18.750
41	11.01.875	91	24.45.625
42	11.28.750	92	24.72.500
43	11.55.625	93	24.99.375
44	11.82.500	94	25.26.250
45	12.09.375	95	25.53.125
46	12.36.250	96	25.80.000
47	12.63.125	97	26.06.875
48	12.90.000	98	26.33.750
49	13.16.875	99	26.60.625
50	13.43.750	100	26.87.500

SHILLINGS AND PENCE IN DECIMALS.

This table is printed in order that the book will be found acceptable throughout the countries that make use of pounds sterling.

Examples.—Annual premium £6/17/8 or £6.8833.

Half-Yearly Table, 4s

Quarterly Table, 6s

£6 = £3.12

£1.59

88 = .4576

.2332

33 = .1716

.0874

(£3/11/7) £3.5793 (£1/16/6) £1.8241

s.d.		s.d.		s.d.		s.d.		s.d.	
1	.0042	4/1	.2042	8/1	.4042	12/1	.6042	16/1	.8042
2	.0083	2	.2083	3	.4083	3	.6083	3	.8083
3	.0125	3	.2125	3	.4125	3	.6125	3	.8125
4	.0167	4	.2167	4	.4167	4	.6167	4	.8167
5	.0208	5	.2208	5	.4208	5	.6208	5	.8208
6	.0250	6	.2250	6	.4250	6	.6250	6	.8250
7	.0292	7	.2292	7	.4292	7	.6292	7	.8292
8	.0333	8	.2333	8	.4333	8	.6333	8	.8333
9	.0375	9	.2375	9	.4375	9	.6375	9	.8375
10	.0417	10	.2417	10	.4417	10	.6417	10	.8417
11	.0458	11	.2458	11	.4458	11	.6458	11	.8458
1/	.0500	5/	.2500	9/	.4500	13/	.6500	17/	.8500
1	.0542	1	.2542	1	.4542	1	.6542	1	.8542
2	.0583	2	.2583	2	.4583	2	.6583	2	.8583
3	.0625	3	.2625	3	.4625	3	.6625	3	.8625
4	.0667	4	.2667	4	.4667	4	.6667	4	.8667
5	.0708	5	.2708	5	.4708	5	.6708	5	.8708
6	.0750	6	.2750	6	.4750	6	.6750	6	.8750
7	.0792	7	.2792	7	.4792	7	.6792	7	.8792
8	.0833	8	.2833	8	.4833	8	.6833	8	.8833
9	.0875	9	.2875	9	.4875	9	.6875	9	.8875
10	.0917	10	.2917	10	.4917	10	.6917	10	.8917
11	.0958	11	.2958	11	.4958	11	.6958	11	.8958
2/	.1000	6/	.3000	10/	.5000	14/	.7000	18/	.9000
1	.1042	1	.3042	1	.5042	1	.7042	1	.9042
2	.1083	2	.3083	2	.5083	2	.7083	2	.9083
3	.1125	3	.3125	3	.5125	3	.7125	3	.9125
4	.1167	4	.3167	4	.5167	4	.7167	4	.9167
5	.1208	5	.3208	5	.5208	5	.7208	5	.9208
6	.1250	6	.3250	6	.5250	6	.7250	6	.9250
7	.1292	7	.3292	7	.5292	7	.7292	7	.9292
8	.1333	8	.3333	8	.5333	8	.7333	8	.9333
9	.1375	9	.3375	9	.5375	9	.7375	9	.9375
10	.1417	10	.3417	10	.5417	10	.7417	10	.9417
11	.1458	11	.3458	11	.5458	11	.7458	11	.9458
3/	.1500	7/	.3500	11/	.5500	15/	.7500	19/	.9500
1	.1542	1	.3542	1	.5542	1	.7542	1	.9542
2	.1583	2	.3583	2	.5583	2	.7583	2	.9583
3	.1625	3	.3625	3	.5625	3	.7625	3	.9625
4	.1667	4	.3667	4	.5667	4	.7667	4	.9667
5	.1708	5	.3708	5	.5708	5	.7708	5	.9708
6	.1750	6	.3750	6	.5750	6	.7750	6	.9750
7	.1792	7	.3792	7	.5792	7	.7792	7	.9792
8	.1833	8	.3833	8	.5833	8	.7833	8	.9833
9	.1875	9	.3875	9	.5875	9	.7875	9	.9875
10	.1917	10	.3917	10	.5917	10	.7917	10	.9917
11	.1958	11	.3958	11	.5958	11	.7958	11	.9958
4/	.2000	8/	.4000	12/	.6000	16/	.8000	21	£1

S.
ound acceptable
sterling.

833.
Table, 6%

32
0874

41

	<i>s.d.</i>	
2	10/1	.8042
3	2	.8083
5	3	.8125
7	4	.8167
8	5	.8208
0	6	.8250
2	7	.8292
3	8	.8333
5	9	.8375
7	10	.8417
8	11	.8458
0	17/	.8500
2	1	.8542
3	2	.8583
5	3	.8625
7	4	.8667
8	5	.8708
0	6	.8750
2	7	.8792
3	8	.8833
5	9	.8875
7	10	.8917
8	11	.8958
0	18/	.9000
2	1	.9042
3	2	.9083
5	3	.9125
7	4	.9167
8	5	.9208
0	6	.9250
2	7	.9292
3	8	.9333
5	9	.9375
7	10	.9417
8	11	.9458
0	19/	.9500
2	1	.9542
3	2	.9583
5	3	.9625
7	4	.9667
8	5	.9708
0	6	.9750
2	7	.9792
3	8	.9833
5	9	.9875
7	10	.9917
8	11	.9958
0	21	21



