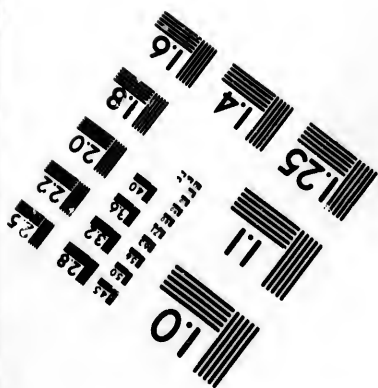
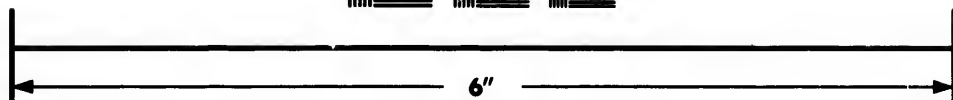
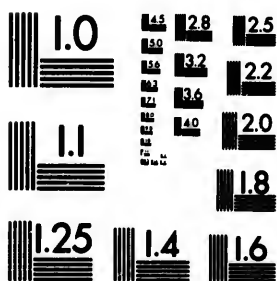


**IMAGE EVALUATION
TEST TARGET (MT-3)**



**Photographic
Sciences
Corporation**

23 WEST MAIN STREET
WEBSTER, N.Y. 14580
(716) 872-4503

**CIHM/ICMH
Microfiche
Series.**

**CIHM/ICMH
Collection de
microfiches.**



Canadian Institute for Historical Microreproductions / Institut canadien de microreproductions historiques

© 1984

Technical and Bibliographic Notes/Notes techniques et bibliographiques

The Institute has attempted to obtain the best original copy available for filming. Features of this copy which may be bibliographically unique, which may alter any of the images in the reproduction, or which may significantly change the usual method of filming, are checked below.

L'Institut a microfilmé le meilleur exemplaire qu'il lui a été possible de se procurer. Les détails de cet exemplaire qui sont peut-être uniques du point de vue bibliographique, qui peuvent modifier une image reproduite, ou qui peuvent exiger une modification dans la méthode normale de filmage sont indiqués ci-dessous.

- Coloured covers/
Couverture de couleur
- Covers damaged/
Couverture endommagée
- Covers restored and/or laminated/
Couverture restaurée et/ou pelliculée
- Cover title missing/
Le titre de couverture manque
- Coloured maps/
Cartes géographiques en couleur
- Coloured ink (i.e. other than blue or black)/
Encre de couleur (i.e. autre que bleue ou noire)
- Coloured plates and/or illustrations/
Planches et/ou illustrations en couleur
- Bound with other material/
Relié avec d'autres documents
- Tight binding may cause shadows or distortion
along interior margin/
La reliure serrée peut causer de l'ombre ou de la
distorsion le long de la marge intérieure
- Blank leaves added during restoration may
appear within the text. Whenever possible, these
have been omitted from filming/
Il se peut que certaines pages blanches ajoutées
lors d'une restauration apparaissent dans le texte,
mais, lorsque cela était possible, ces pages n'ont
pas été filmées.
- Additional comments:/
Commentaires supplémentaires:

- Coloured pages/
Pages de couleur
- Pages damaged/
Pages endommagées
- Pages restored and/or laminated/
Pages restaurées et/ou pelliculées
- Pages discoloured, stained or foxed/
Pages décolorées, tachetées ou piquées
- Pages detached/
Pages détachées
- Showthrough/
Transparence
- Quality of print varies/
Qualité inégale de l'impression
- Includes supplementary material/
Comprend du matériel supplémentaire
- Only edition available/
Seule édition disponible
- Pages wholly or partially obscured by errata
slips, tissues, etc., have been refilmed to
ensure the best possible image/
Les pages totalement ou partiellement
obscurcies par un feuillet d'errata, une pelure,
etc., ont été filmées à nouveau de façon à
obtenir la meilleure image possible.

This item is filmed at the reduction ratio checked below/
Ce document est filmé au taux de réduction indiqué ci-dessous.

10X	14X	18X	22X	26X	30X
<input type="checkbox"/>	<input type="checkbox"/>	<input type="checkbox"/>	<input checked="" type="checkbox"/>	<input type="checkbox"/>	<input type="checkbox"/>
12X	16X	20X	24X	28X	32X

The copy filmed here has been reproduced thanks to the generosity of:

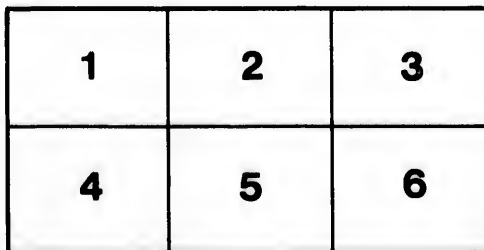
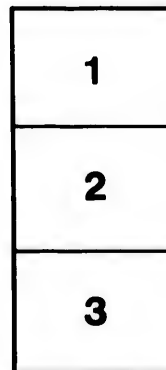
Metropolitan Toronto Library
Fine Art Department

The images appearing here are the best quality possible considering the condition and legibility of the original copy and in keeping with the filming contract specifications.

Original copies in printed paper covers are filmed beginning with the front cover and ending on the last page with a printed or illustrated impression, or the back cover when appropriate. All other original copies are filmed beginning on the first page with a printed or illustrated impression, and ending on the last page with a printed or illustrated impression.

The last recorded frame on each microfiche shall contain the symbol → (meaning "CONTINUED"), or the symbol ∇ (meaning "END"), whichever applies.

Maps, plates, charts, etc., may be filmed at different reduction ratios. Those too large to be entirely included in one exposure are filmed beginning in the upper left hand corner, left to right and top to bottom, as many frames as required. The following diagrams illustrate the method:



L'exemplaire filmé fut reproduit grâce à la générosité de:

Metropolitan Toronto Library
Fine Art Department

Les images suivantes ont été reproduites avec le plus grand soin, compte tenu de la condition et de la netteté de l'exemplaire filmé, et en conformité avec les conditions du contrat de filmage.

Les exemplaires originaux dont la couverture en papier est imprimée sont filmés en commençant par le premier plat et en terminant soit par la dernière page qui comporte une empreinte d'impression ou d'illustration, soit par le second plat, selon le cas. Tous les autres exemplaires originaux sont filmés en commençant par la première page qui comporte une empreinte d'impression ou d'illustration et en terminant par la dernière page qui comporte une telle empreinte.

Un des symboles suivants apparaîtra sur la dernière image de chaque microfiche, selon le cas: le symbole → signifie "A SUIVRE", le symbole ∇ signifie "FIN".

Les cartes, planches, tableaux, etc., peuvent être filmés à des taux de réduction différents. Lorsque le document est trop grand pour être reproduit en un seul cliché, il est filmé à partir de l'angle supérieur gauche, de gauche à droite, et de haut en bas, en prenant le nombre d'images nécessaire. Les diagrammes suivants illustrent la méthode.

2

THE SCOTT STAMP & COIN CO. L'd.

132d Auction Sale.
The Hart Collection.



CANADIAN
COINS, MEDALS & TOKENS.

SATURDAY, APRIL 13th, 1895,
At 183 Broadway, New York City,
AT 2 O'CLOCK, P. M.

CANA

INCLUD
THE

13

CATALOGUE
OF THE
VERY VALUABLE COLLECTION
OF
CANADIAN COINS, MEDALS AND TOKENS,

FORMED BY
GERALD E. HART, Esq.,
OF MONTREAL.

INCLUDING MANY OF THE WELL KNOWN RARITIES AND GENERALLY IN
THE CHOICEST CONDITION, TO WHICH ARE ADDED A FEW ANCIENT
COINS, ENGLISH, FRENCH AND SPANISH GOLD, TOGETHER
WITH MEDALS OF VARIOUS COUNTRIES, EM-
BRACING SOME RARE AMERICAN.

To be Sold by Public Auction at
183 BROADWAY, NEW YORK,
HENRY C. MERRY, Auctioneer,
On Saturday, April 13th, 1895,
AT TWO P. M.

The Coins will be on Exhibition from 9 A. M. to 1 P. M.

132^D SALE.

CATALOGUED BY
THE SCOTT STAMP & COIN CO., L'D.
NO. 18 EAST 23^D STREET,
NEW YORK, N. Y.

THE SIZE OF
COINS AND MEDALS

(The closing number or that following name of coin)

In this Catalogue, is given in Millimeters.



There are no duplicates in any lot unless so mentioned specially.
See page 42 for explanation of abbreviations and list of authorities.



Lot 184.

CORRECTIONS.

Lots 55 and 56 are dated 1822.

Lot 258. R should precede Ship r.

Lot 205 read SERJ^T for Sergt.

Lots 112 and 114 should change numbers on plate.

**** Catalogues of this Sale, with the prices realized, in red ink, 50 cents.**

**** Cuts on cover represent lot 122.**

So large
— of which
a continuous
space here
ities in Pa
with fresh
strikes.
intent, inc

The pu
possession
struck; bu
by differ
mules, and
officials h
edge, in u
main — fo
removed t
to pass th
a list of th
to settle ve
The mere
restricke.
of Medals

“ The s
indicate th
afterwards
founded w
of gold.



PREFACE.

So largely has the French Mint contributed to the world's supply of medals, — of which from the earliest to the very latest, the Canadian series has received a continual, and sometimes liberal, share, — that it will not be improper to give space here for some remarks on the subject. It is to be regretted that the authorities in Paris have yielded to the pressure of collectors and dealers to furnish them with fresh impressions from the old dies, which are now so familiar to all as *re-strikes*. The occasional misnaming of dies by workmen there, whether through intent, indifference, ignorance or laxity, has further tended to complicate matters.

The published Catalogue of that institution gives a list of the dies in its possession, with the occasions for which the compilers supposed them to be struck; but as this Catalogue seems to have been prepared at various times and by different hands, errors have crept in, which have produced some curious mules, and a few of these will be found noted. The excellent plan by which the officials have designated the period of striking medals, by a device on the edge, in use since 1841, is a great protection to collectors, when suffered to remain — for there is reason to fear that unscrupulous persons have occasionally removed these symbols, clumsily at best, for uniformity of edge is lost, hoping to pass the restrikes as originals. We have obtained from the highest authority a list of these devices, which is given below, and which will enable any collector to settle very nearly the period when any of the modern restrikes were issued. The mere *lettering on the edge* does not necessarily mean that the piece is a restrike. We do not know the means of identifying restrikes (if such exist) of Medals published since 1841, struck at the French Mint.

“The stamps on the edge of Medals struck at the Paris Mint are designed to indicate the metal of which they are made, with whatever other metal they may afterwards be covered. Thus the bronze Medals, silvered or gilt, cannot be confounded with those of silver or silver gilt, nor the silver or bronze gilt with those of gold.

" Before 1832 when the Medal Mint was part of the Royal establishment, the issues had no sign indicative of their production. When in 1833 the Medal Mint was joined with that for coinage, gold and silver Medals received on their edge the impression of an antique lamp, to determine their standard (916 m/m for gold and 950 m/m for silver); silver-gilt Medals bore the word "*Dore*" following the stamp of the antique lamp. Copper and bronze Medals, whose standard did not need to be determined, had no distinguishing mark.

" It was not until 1841 that it was ordered that all Medals, indiscriminately, should be marked as soon as completed, with the mark of the Director under whose supervision they were struck. As this stamp was to be the same for all Medals, the indication of the metal was added, to distinguish readily those that were gilt or silvered. The different marks of the makers have necessarily changed with the Director, and those since 1841 whose symbols have accompanied the name of the metal on the edge of the Medals are as follows:—

" 1841-1842. The letter C and an anchor interlaced. (M. Collot, Director.)

" 1843-1845. The prow of an ancient vessel. (M. de Cambry, Director.)

" 1845-1860. A pointing hand. (M. Dierickx, Director.)

" 1861-1879, inclusive. A bee. (M. the Baron de Bussière, Director.)

" Since the 1st of January, 1880, the date when the law of July, 1879, went into effect, — which requires that all Coins and Medals shall in future be struck at the government establishment under the authority of the Minister of Finance, the distinguishing mark of the administration on the edge is the name of the metal, and a horn of plenty with coins pouring from it.

" The makers authorized by the government to strike round Medals without rings, are also obliged by the law to indicate clearly the metal employed, and to make the pieces, whether of gold or silver, of the same standard as the Mint, and also to verify the standard, as in the case of jewelry, by warranty stamps."

Examples of the lack of accuracy in assigning these dies, mentioned above, i shown in the "*Honos et Virtus*" (Lot 81), — which we now determine was cut by Winslow and not Warin — of which there are two regular sizes, with this device. The smaller is said by the French Catalogue to belong to Louis XIV, and commemorates the Peace of Utrecht; a larger one with this rev. but another obv. is called a Prize Medal of the *Universel des Arts*. But in our Catalogue we have one of larger size still than that named in the French, with bust of Louis XIV, while Betts gives as an "Indian Medal" one with the bust of Louis XV and the recut rev.! There seems to be some evidence that this reverse (although not very appropriate) *was* used on Indian Medals in Canada, with the royal bust, but in Lot 81 we apparently have a mule of a size hitherto unnoticed; if these different sizes were designed for gifts to the Indians, the assignment in the French Catalogue is at least doubtful. Examples of restruck Medals with edge devices showing approximate date of minting, will be found under 176, 364, etc., but we have not noted the date of restrikes as a rule, as the facts above given sufficiently identify them.

We again take pleasure in announcing that counterfeits and all manner of impositions are strictly excluded from our sales.

1 Me
a
li
2 176
P
fo
3 184
se
W
4 St.
sh
R
5 A s
L
6 184
(
to
7 186
ra
8 187
9 Gol
da



CATALOGUE.

BRITISH NORTH AMERICA.

- 1 Medal for Arctic Discoveries, 1818-55. Hd of Victoria *L.* *R* Ship among icebergs. Bar and ribbon. 3 *obv.* dents. M. Johnston lightly scratched on *rev.* *R* 33 x 33.

NEWFOUNDLAND.

- 2 1762 Bust of Geo. III, *L.* *R* Pax | *auspicata* | Nov. 3; within serpent circle; various legends. Commemorates victories in Newfoundland, etc. Betts 441, L. 865. V. fine. *Æ* 40.
- 3 1841 Cathedral of St. Johns. *R* Laying foundation stone. Field scratched, edge dents, holed at top. Fon. 216, L. 323. Rare. WM. 53.
- 4 St. John's Total Abstinence Soc. Man and woman sup. religious shield. *R* The pledge in 13 lines on cross. Holed, fine. L. 326. Rare. WM. 43.
- 5 A similar medal by the Newfoundland Total Abs. Soc. Holed, fine. L. 325. Rare. WM. 43.
- 6 1841 and n.d. Rutherford, St. John's. Same for Harbour Grace (2 var.). Victoria Cents, 1865, '72, '73, '76, '80, '85, '88. Good to fine. II
- 7 1860 "Fishery Rights for Newfoundland." B. 955, L. 317. Fine, rare.
- 8 1876, '90 10 Cents. 1880, '82 5 Cents. 1 fine, others good. 4
- 9 Gold. Two Dollars, 1865. Hd of Victory *L.*, *laur.* *R* Value and date within beaded circle. Fine.

- 10 1870 Fine.
 11 1870 Fine; scratches.
 12 1872 Fine.
 13 1880 Very fine.
 14 1881 Good.
 15 1882 H(eaton) on *rev.* About unc., brilliant.
 16 1885 Fine.
 17 1888 Very fine, brilliant.
 18 Duplicates, Halfpennies, etc. Rutherford, Harbour Grace and St. John's (4 var.) 28. Victoria Cents, 7 dif. dates. Good to fine. 40

CANADA IN GENERAL.

Pieces under this heading do not bear reference to any particular place or Province, and extend from the earliest period to date. The series known as Doubtful are included here.

- 19 1670 Louis XIV, $\frac{1}{2}$ Cwn. R̄ Gloriam Regni, etc. Fine, rare.
 20 1670 $\frac{1}{2}$ Cwn, as last, and equally fine.
 21 1719 Louis XV, Sou. 1721 Liard, $\frac{1}{2}$ Sou. L. 254f and 254g. 2 are unc., partly bright. 3
 22 1720 20 Sols. Bust. R̄ Two Ls addorsed, cwnd. L. 254d. Nearly fine, scarce. R 21.
 23 1720 20 Sols, as last. Good.
 24 1721 Sou. Two Ls crossed and cwnd. B. mint. Date bet. symbols. Good. Also H. mint. Fine. 2
 25 1721 Another pair, *m.m.* invisible. Symbols differ from last. V. good. H. mint, also a die-variety. *Obv.* corroded. 2
 26 1722 Others. H. mint. From differing dies. Poor to good. 4
 27 1722 $\frac{1}{2}$ Cwn. Bust. R̄ Cwnd arms. Fine.
 Coins in lot 21 (2 of which are illustrated by Le Roux) and 27 were struck during Law's financial administration. We doubt the propriety of the special attribution to the American Colonies, of these in preference to other French coins of the period.
 28 1781 No. Am. Token. Yellow and red copper. 1805 Wellington. R̄ Harp. 1811 Vincit amor, etc. (2). $\frac{1}{2}$ Pennies. Good. 5
 29 1811 $\frac{1}{2}$ Penny. Bust of Wellington l. within wreath. R̄ TRADE & COMMERCE. Commerce setd l. *Ex.* date. B. 977, L. 795. Good, extremely rare.

A fine specimen in our last sale brought \$14.25, a price in our judgment (if it is permissible to make comparisons), *very* much below its real worth. It is the choicest example of the few known to us.

- 30 1811 $\frac{1}{2}$ Penny. VEXATOR CANADINSIS. Bust *L*. \mathcal{R} NON ILLOS VIS
CAPERE. Female dancing *L*. *Ex.* date. About as good a speci-
men of this rare but wretchedly executed coinage, as we have
seen. Nearly all letters plain, date strong.
- 31 1811 $\frac{1}{2}$ Penny, as last. *Obv.* quite as good. Date poor.
- 32 1811 Another. Inferior to last, date is good.
- 33 1811 $\frac{1}{2}$ Penny. Slightly varying from preceding, with CANADIENSIS.
Obv. shows but few letters. \mathcal{R} Fair, date visible.
- 34 1811 Another, but in *brass* (first we have seen), complete outline of
bust, Canadiensis in full. Remainder poor.
- 35 1811 Another. *Obv.* impression only. Half of type invisible.
- 36 1811 Another. 1st var. *Obv.* poor. \mathcal{R} GOOD in large letters, in
relief, through the field. New to us.
- 37 1811 Duplicate Vexators. 1st var. (2), 2d do., with blank *rev.*
Poor, though not differing greatly in this respect from those pre-
viously described, or that follow. 3
- 38 1811 Another lot. Asst. as last and in sim. condition. 3
- 39 1811 A sim. asst. The 2d var. has *obv.* and *rev.* Condition as
last. 1 holed. 3
- 40 1812 Bust *r.* within wrth. \mathcal{R} Halfpenny Token. Commerce setd
L. 7 var. Others similar, without legend. 4 var. Mostly good.
Brass. 11
- 41 1812 $\frac{1}{2}$ Penny. Similar, better work. 3 varieties. Also Penny,
date on *obv.* Another, both sides dated. Good to fine. All
 \mathcal{A} . 5
- 42 1812 Bust of Wellington. \mathcal{R} Names and dates of battles in 8 lines.
V. fair, rare. Brass, 26.
- 43 1812 Another. \mathcal{R} CIUDAD, etc. in 9 lines. See B. 986. Fine,
rare. \mathcal{A} .
- 44 1812 Others of same series, varying. Mostly fine. 11
- 45 1812 $\frac{1}{2}$ Penny. Trade & Navigation. Commerce setd *L*. 1813 $\frac{1}{2}$,
1 Penny. 1814 Penny (2 var.). Good. 5
- 46 1812 and '15 Ship *r.* 1813 Ship *L*. Wellington bust *L*, also Penny,
sim. (poor). Marquis Wellington, fine, others good. 6
- 47 1813 Lion *L*. 3 var. Same 1814. Eagle. 1813, '14, '15 2 vars.
each, Halfpennies. Mostly fine. 10
- 48 1814 Halfpennies. R. H. (2), Wellington (3), Gt. Britain, For the
convenience of trade (poor, rare). Stephen's Dublin Penny.
Poor to fine. 8

- 49 1815 Halfpennies. S. C. & C. Brass. B. 996, L. 783a. Wellington Waterloo 2. British Copper 2. Success 2. 1816 Harp. Good. 8
- 50 1816 $\frac{1}{2}$ Penny. Ship, Success. R 1816. B. 725, L. 681. Gd, rare.
- 51 1820 $\frac{1}{2}$ Penny. Bust *r.* R Commerce seated *l.* *Ex.* date. As crude as the "Vexators" though rarer. The few we have seen were in brass. This is in copper. B. 1008. Fair
- 52 Duplicates of the two preceding lots. Good and 1 2
- 53 1820 Halfpennies. Harp, 6. Hibernia, 2. R Commerce. 1825 To facilitate trade, 2. 1830, '41 Cal. R . Good, 1 holed. 14
- 54 1820 Colonial $\frac{1}{4}$ Dol. Anchor cwnd. Rare. Good.
- 55 1820 $\frac{1}{8}$, $\frac{3}{8}$, $\frac{1}{4}$ Colonial, as last. Good, nearly fine. 3
- 56 1820 Another set. Good. 3
- 57 1858 Vic. 5, 10, 20 Cents, milled edges. Fine to unc., bril. 3
- 58 1858 Another set, and nearly as fine. 3
- 59 1872 50c. 1874 10, 25c. 1888 10c. Fine to unc. 4
- 60 5 Cents, 1874, '84, '86, '87, '88, '89, '90, '91. Fine to unc. 8
- 61 Duplicates. Colonial $\frac{1}{8}$, $\frac{3}{8}$ (2), $\frac{1}{4}$. Vic. 5, 10, 20 (2) Cts. Gd. 8
- 62 Cents. 1858, '59, '81, '82 (last 2 by Heaton), '84, '86, '87, '88, '90 (by Heaton), '91. Unc., red. '92 and *rev.* impression of '58. 12

Without Date.

- 63 $\frac{1}{2}$ Penny. No labour no bread. Varieties. Fine, 1 partly red. 3
- 64 $\frac{1}{2}$ Penny. Victoria Nobis est. B. 982, L. 809. Unc., mostly red.
- 65 Penny. Bust of Wellington. R Cossack mtd *r.* Fine. Rare.
- 66 Good for | 5c | Sam. Cohn | in trade. R The J. M. Brunswick | & Burke Cos. Fine. Brass, 24. This and the two following, are said to be very rare.
- 67 *sim.* to preceding, issued by J. B. & Co. L. 1017. Fine. Brass.
- 68 Another, by J. D. Kinney. R A large 5. L. 1060. Fine. Brass.
- 69 The remainder. Includes 13 vars. of S. C. & C.; Drooping flag (2); Am. flag, etc.; Man with shamrock; Ship. R One Penny (v. poor) and 3 unlocated Bar or Billiard Tokens we do not find in L. Mostly good, 1 holed. 31
- 70 Duplicates. Halfpennies, etc., 1721, '81, 1806, '12, '13, '14, '15, '16, '20, '25, '30, '41, '46. Cents 1858, '59, '65, '86, '88, '90, '91. Contains upwards of 40 vars., among which CIUDAD, Marq. Wellington, S. C. & C., brass; and a few other scarce or fine pcs., 2 holed. 104

71 A

72 O

73 D

74 16

75 16

76 16

77 16

78 16

79 16

80 16

81 Bu

82 A

We do not
reference
of Medal
of Numi
such con
that Med
certain th
birth; it
Canada.

83 Lo

- 71 A similar lot with fewer of the scarce ones. Average condition not quite as good, 7 holed. 96
- 72 Others, undated. Rutherford's, Wellingtons, No labour, etc., For public and gen'l accommodation, etc. 3 of farthing size. Poor to fine, 1 holed. 79
- 73 Duplicate Pennies, 1812 (3), '13 (4), '14 (2), '38 and a good Cossack. Mostly good, 1 fine. 11

MEDALS, JETONS, ETC.

- 74 1631 Bust. Card. Richelieu *r.*, by *Warin*. *R* Mens sidera volvit. L. 302. Perfect. *Res.* *Æ* 52.
- 75 1636 Sim. *obv.* *R* Hoc dvce tvta. Ship. *Ex. date.* Good. *Æ* 27. Another, sim., finely executed. Date in legend. Bright red. *Res.* *Æ* 32.
- 76 1686 Hd Louis XIV *r.*, by *Mauger*. *R* Felicitas domus, etc. Bust of the Dauphin *l.* above three juvenile busts. Betts 76, L. 300c. Perfect. *Res.* *Æ* 41.
- 77 1693 Bust *r.*, by *Roussel*. Sim. in design to last. Names under busts. Betts 75, L. 300. Trifling blemishes. *Res.* *Æ* 77.
- 78 1693 From same die as 76. *R* Type of last. L. 300b. Perfect, red. *Res.* *Æ* 41.
- 79 1693 Hd by *Dollin*. Type as last. Date in figures. L. 300c. Perfect, red. *Res.* *Æ* 36.
- 80 1693 Hd by *TB.* (in mon. for Thos. Bernard). Type and condition as last. L. 300d. *Res.* *Æ* 30.
- 81 Bust Louis XIII *r.* *R* Honos et virtus. Two warriors clasp *r.* hands. Signed *W(arin)*, on *rev.* at base. See Betts 160, L. 300g. Perfect, red. *Res.* *Æ* 56.
- 82 A duplicate of last, slight stains. *Res.* *Æ* 56.

We have placed these Medals here in deference to the opinion of the owner, but we do not share the views entertained by him and Dr. LeRoux. We can discover no reference, even in the most remote degree, to America. The attribution to America of Medals of Richelieu by LeRoux and others, was discussed in the *American Journal of Numismatics*, in October, 1893, and the conclusion reached in that article, that no such connection exists, has never been disputed to our knowledge. While it is true that Medals similar to 76, *et seq.*, were used for presentation to Indian chiefs, it seems certain that that with the bust of the infant Duke of Berri was struck in honor of his birth; it remains to be proved that the others were specially designed for use in Canada.

- 83 Louis XV, 1751 Jeton. *R* Sub omni sidere, etc. Indian standing. Betts 385, B. 510, L. 255. Good. *Æ*.

- 85 1751 Another. *Obv.* apparently L. 258. Fine. *Res.* Æ.
- 86 1751 Another. *Obv.* L. 259. *Rv* 255. *Res.* Unc. *Æ.*
- Betts does not assign separate numbers to the restrikes of the Franco-American Jetons (for reasons given under his 385), but includes all the obverses by different engravers, Roettier, Mauger, Marteau, DuVivier, etc., in his text or notes, these types being substantially alike.
- 87 1752 Jeton. Short draped bust sim. to L. 267. Two long ribbons to bow. *Rv* *Utrique facit*, etc. Mercury soaring *l.* above sea. Betts 386, L. 263. Good. Extremely rare. *Æ.*
- 88 1752 Another from same die as last. *Res.* Unc. *Æ.*
- 89 1752 Jeton. *Protegit et pascit.* Arms of the French West India Co. *Rv* Same as 87. Betts 387, L. 260. Fine. *Res.* *Æ.*
- 90 1753 Jeton. *Rv* *Satis unus*, etc. Sun casting rays upon the two hemispheres. Betts 388, L. 269. Unc. *Res.* *Æ.*
- 91 1754 Jeton. *Rv* *Non inferiora metallis.* A stream separates three beavers *l.*, plant *r.* Betts 389, L. 275? Fine, very rare. *Æ.*
- 92 1754 Another. From same dies as last. Good, very rare. *Æ.*
- 93 1754 Another. Bust by *C. J. R.* (in script mon. for Chas. Joseph Roettier). Not in L. *Rv* Same as 91. Unc. *Res.* *Æ.*
- 94 1755 Jeton. *Rv* *Non vilius aureo.* A galley. Betts 390, L. 282. Fine, partly bright. *Æ.*
- 95 1755 Another. From same dies as preceding. Fine. *Æ.*
- 96 1755 Another. Uncirculated. *Res.* *Æ.*
- 97 1755 Duplicates of lots 83 (good), and 94 (2, one poor). *Æ.* 3
- 98 1756 Jeton. *Rv* *Sedem non animum*, etc. Bees and beehives. Betts 393, L. 285c. Fine, very rare. *Æ.*
- 99 1757 Jeton. *Rv* *Parat ultima*, etc. Mars and Neptune floating *l.* on shell. Betts 394, note, L. 286. Probably the rarest of the series; very good. *Æ.*
- 100 1758 Jeton. *Hd r.* signed *R. Filius* (for Jos. Chas. Roettier, the son). *Rv* *Eadem trans æquora*, etc. Birds flying above sea. L. 290. Unc. *Res.* *Æ.*
- 101 1758 Bust *r.* *Ex.* date. *Rv* *Wesel, Oswego, Port Mahon*, etc. Four island forts. Capture of Oswego. Betts 415, L. 308a. Light nicks. Fine, very rare. *Æ.* 32.
- 102 1758 Geo. II. Bust *l.* *Rv* *Foedus—Invictum*, etc. Legend in two circles. Britannia in chariot drawn by lion. Betts 416, L. 862. Fine. Brass, 42.
- 103 1758 Another, as last. Fine but stained. Brass, 42.

104 17

105 17

106 17

107 17

108 17

109 17

110 17

111 17

b

f

Betts p

Peace of P

ble, but ins

J. C. Roett

112 GEO

H

B

v

2

v

113 An

m

114 181

b

Æ

r

115 181

d

a

116 Pea

R

A

117 182

g

b

- 104 1759 Same as 102. R Three legends in circle. Inverted fleur-de-lis on supported shld. Betts 418, L. 861. About perfect, slight stain. Brass, 43.
- 105 1759 Another, as last. Very fine. Brass, 43.
- 106 1759 Another. In silver. Very rare, perfect. 43.
- 107 1759 *Obv.* same as *rev.* of 102. R Same as 104. Betts 419. Not in L. Very fine. Brass, 43.
- 108 1760 Hd of Geo. II *l.* R Canada subdued. Female setd beside tree. Betts 430, L. 850. Fine. Æ 39.
- 109 1760 Another as last, but in silver. Edge inscribed "William · Pitt · Administring." See Betts 430. Perfect. Very rare. 39.
- 110 1760 Another, also in silver. Very fine. 39.
- 111 1763 Hd of Louis XV *r.* R Pax ubique, etc. Peace standing before nude male setd. L. 309. Betts 444 has a dif. *obv.* Perfect. *Res.* Æ 42.
- Betts attributes the reverse to Holtzhey, who cut several Medals relating to the Peace of Paris; the initials of the engraver are so small that they are frequently illegible, but instead of I. G. H. they are clearly J. C. R. on this, showing it to be the work of J. C. Roettier.
- 112 GEORGIUS III DEI GRATIA. Young bust of the King in armor *r.* R HONI · SOIT · QUI · MAL · V · PENSE · etc. The Royal arms of Gt. Britain. With loop. Given to Indian chiefs, who rendered services during the conquest of Canada. See Betts 435, note, McL. 293, L. 832. Very fine, a few light nicks. Extremely rare and valuable. Æ 77.
- 113 Another, from the same dies as preceding. Somewhat worn, but may be fairly rated as good. Loop wanting. Æ 77.
- 114 1814 GEORGIUS III DEI GRATIA BRITANNIARVM REX · F · D. Bust *r.* by *Wyon.* R Royal arms with motto, crested and supported. *Ex.* 1814. L. 838. Very fine. A few slight nicks on *obv.* V. rare and valuable. For services during the war of 1812.
- 115 1814 We acknowledge thy bounty. Peace setd on globe. *Ex.* date. R To commemorate the peace concluded. Cornucopia and olive branch crossed. Fine, rare. Æ 43.
- 116 Peace spreads her influence o'er the Atlantic ocean. Peace stndg. R Concord | between | Great Britain | and America. By *Mills.* Æ Fine. WM. Good. 40. 2
- 117 1829 Wilhelmvs I, Neerlandiae, etc. Bust facing. R Ab | Anglis | Americanis | etc. in 10 lines. Arbitration of boundary lines bet. Canada and U. S. L. 830. Fine. Æ 42.

- 118 1840 VICTORIA DEI GRATIA BRITANNIARUM REGINA F: D: Hd *l.* by *Wyon.* *R* Type of 114. With loop. L. 840. Few nicks on *obv.* Fine. For services during the rebellion of 1837, and without doubt the rarest of the series. *R* 75.
- 119 Canadian Prize—Great Exhibition. Cwnd arms, within branches crossed. *R* The Earl of Elgin and Kincardine, K. T. Wrth. Beaver at top. Plain field. Very rare. Perfect. *Æ* 37.
- 120 1851 H. R. H. Prince Albert, etc. Hd *l.* by *Wyon.* *R* Exhibition of the works of industry of all nations. Globe inscribed EXHIBITION. Edge, CANADA No. 105. Fine, rare. *Æ* 44.
- 121 1858 Masonic Gd Lodge of Canada. Perfect. L. 921, Marvin 26. 1860 Prince of Wales' visit. L. 935. V. fine. WM. 42, 44. 2
- 122 1867 The Confederation Medal, by *Wyon.* Bust of Victoria *l.* *R* Juventas, etc.—Canada instaurata. Four females personifying the Provinces, in counsel with Britannia. L. 1185. Perfect. *Æ* 76.
- The preceding specimen is in the original morocco case and is accompanied by a letter presenting the Medal to Hon. Jas. Pollock, Director of the Mint, from B. F. Stevens, U. S. Despatch Agt., London, 1869, and containing some details of design, and portrait.
- 123 1867 Another. *Obv.* Light nicks and scratches. *Rev.* Fine.
- 124 1867 Another. Has slight break in *rev.* die bet. S. and V. Some unimportant discoloration on *obv.*, otherwise perfect.
- 125 1868 Vis unita fortior. Two soldiers stndg before cwnd shld. *R* Presented | by the | Dominion of Canada | Rifle Association | 1868. L. 1600. V. fine and rare. *R* 44.
- 126 1868 Another. In white metal. Engraver's name erased. Very fine, also rare.
- 127 187- Victoria Regina. Head as on 122. *R* Indian Treaty No. Soldier and Indian shaking hands. Below 187- L. 1191. Perfect. Very rare. *Æ* 76.
- Impressions of the preceding Medal in silver were given to Indian chiefs when treaties were consummated by the Governor of Manitoba from 1871 to 1877. The one here may be regarded as a proof, trial or exhibit specimen.
- 128 1872 Albert Edward, Prince of Wales. Hd *l.*, by *Wyon.* *R* Recovery, etc. Canadian Thanksgiving. The Prince's crest. Roses *l.*, thistles and shamrocks *r.* L. 1660. Rare. Perfect. *R* 58.
- 129 1876 Earl and Countess of Dufferin. Hds jugate *r.*, by *Wyon.* *R* Presented by his excellency, etc. Crowned arms sup. L. 1340. Perfect. Rare. *Æ* 51.

130 (

131

132 (

133 (

134 A

135 F

136 C

137 I

138 I

139 I

140 C

141 G

142 R

143 C

- 130 (1876) Arms of the Dominion bet. branches crossed. R Dominion of Canada. Fame flying *r.* L. 1460. Fine. R 41.
- 131 Another. In bronze. Perfect.
- 132 Others, as last. Very slight stains. 2
- 133 (1878-83) Hds of Princess Louise and Marq. of Lorne, jugate *l.*, by *Wyon*. R Palmam qui, etc. Two cwnd shlds joined by a single crest. Edge ins. to the recipient, Charles R. Daoust. L. 1570. About perfect, very rare. Morocco case. R 51.
- 134 Another. In bronze. Edge plain. Perfect, very rare.
- 135 Hds of Marq. and March. of Lansdowne, jugate *r.*, by *Wyon*. R Presented by his Excellency, etc. Arms crested and supported. L. 1550. Very rare. Perfect. Æ 51.
- 136 Others. Stanley, L. 1515; Jubilee Cross (brass), L. 1874; do., Star, L. 1874a, also L. 1871 (2) and Canada's Tribute, L. 1870 (2). Fine. WM. 7
- 137 1887 Queen's Jubilee—Victoria Regina. Bust *r.* R 1837-1887 Canada. L. 1871, by *Ellis*. Silver; in this metal rare. Fine. 35.
- 138 1888 Hds of Lord and Lady Stanley, jugate *l.* by *Wyon*. R Presented by his Excellency, etc. Arms supported, Stanley crest. Perfect, very rare. R 51.
- 139 1891 Sir John A. Macdonald. Our country's choice. The Dominion must and shall be preserved, etc. L. 1572, 1572a, b, c, d, e, f and g. One with hd of Laurier on *rev.* All fine. WM. Aluminum, 1 duplicate. Size 33. Rare lot. 10
- 140 Canadian Mnf'grs. Association. Maple leaf. R Arte et labore. L. 1135. Fine, rare. WM. 44.
- 141 Grand Trunk Ry Co. Bust of Richard Trevithick *l.* by *Wyon*. R Presented by the | Directors, etc., in 7 lines. Very rare. Perfect. Æ 45.
- 142 Religious. Salvation Army, L. 1120, '21 and '25; Colonization, 1250; Cath. Indulgence, 1320; League of Friends, 1255, also 1256, '57 (2 var.), 1580, 1640, '41, '42, '42a, 1830 and 1 not in L. Various shapes. Æ , brass and WM, mostly latter. A fine lot, several, scarce. 16
- 143 Communion Tokens. Stock Tokens, used in various Churches throughout Canada. L. 905, 906, 907, 908, 916a, b and c, and 1255. Latter is in Æ , WM. and WM. silvered and gilt (4) A very fine lot. 12

12 EAST MAIN.—MADALEN ISLANDS.—PRINCE EDWARD ISLAND.

- 144 Temperance. L. 1791 (rare), 1791a, b, c, d, f, 1794, '95. Various shapes and metals. Fine, 2 holed. 7
 145 Duplicates of last three lots. Of 142 (4), 143 (17, 8 vars.), 143 (1). Most fine, all WM. 21

EAST MAIN.

- 146 Hudson Bay Co. Arms of the Co. supported and crested. R̄ Values for $\frac{1}{8}$, $\frac{1}{4}$, $\frac{1}{2}$ and 1 New Beaver Skin. Fine to unc. Rare. Brass, 18, 24, 27, 29. 4
 147 Another set as last, with a duplicate of the $\frac{1}{4}$. Fine. 5

MAGDALEN ISLANDS.

- 148 1815 Magdalen Island Token. A seal r. Ex. date. R̄ Success, etc. One Penny. A dried codfish. Extremely fine. Light olive. Obv. a few nicks, rev. shows no wear. Valuable.
 149 1815 Another. Fine.
 150 1815 Another. Not quite equal to last.
 151 1815 Others. Fair to good. 6
 152 1815 Others. Poor, 1 holed. 14

PRINCE EDWARD ISLAND.

- 153 "Holy Dollar" 8 Rls. Chs. IV, 1793. From centre of which an octagonal form 14 *mm.* has been taken.

We know nothing of the history of this particular Necessity piece. Its general character is quite like others known to have been similarly treated for Guadeloupe and Dominica, and differs mainly in form of perforation or the piece extracted. This one is stated to have come from the Island and to be genuine, and we have no reason to doubt either.

- 154 D M C | P. E. I In large incuse letters. R̄ Blank. Issued by Dennis McCarthy. Extremely rare. Æ 35.
 155 Another. Probably by McC., with P. E. I only. Equally rare. Æ 35.
 156 1840 Halfpenny. Sheaf of wheat. R̄ Commerce & Trade. A plow. Good, excels all others we have seen; very rare.
 157 1855-71 Cts. N.d. Steamship, Codfish (3 var.). Good, fine. 6
 158 1855 Cents. Edward's and Edward, 2 vars. each; 1857, 6 vars. Good to fine. 10
 159 Charlottetown. JOHN IOY. R̄ OLD | LONDON | CH. TOWN. L. 994k. Good, rare. Brass, 24.

160 I
 161 C

162 I

163 I

164 F

165 I

166 I

167 H

168 N

169 A

170 w

171 A

We b
 lication of

172 D

173 A

174 17

Comm

LAND.

Various
7
143 (1).
21

ed. R

Rare.
4
5

Success,
Light

6
14

which an

s general
adeloupe
ed. This
no reason

issued by

ly rare.

ade. A

fine. 6

, 6 vars.

10

L. 994k.

NOVA SCOTIA.

- 160 Dups. of lots 157, 158, about 12 var. Good, fine, 2 holed. 76
- 161 Communion Tokens. St. John Parish, L. 358, 359 (2 var.); Bedeque, 362; Princetown, 362; Charlottetown, 363, 366; St. John, 365; Cascumpeque, 366c. Good to fine. 10
- 162 Dups. of last lot, 5 vars. and 3 poor, unidentified. 10

NOVA SCOTIA.

- 163 1814 Carritt & Alport, Hosterman (with 1815, 3 var.), Broke (2), 1815 Coml. Change, Starr, White, Black (2), Barry (3), Brown (n.d.), Halifax ½ Penny Tokens. Good to fine. 16
 - 164 Halfpennies, 1823 (3), '24 (2), '32 (5), '40 (2), '43 (2). Pennies, 1824 (2), '32 (4), '40, '43. Some fine. The lot includes a poor and pierced specimen of the rare ½d. with date 1382. 23
 - 165 1382 Halfpenny. L. 426. Fair, as good as found, very rare.
 - 166 1856 ½ and 1d. Mayflowers, '61 ½ and 1c., '62 1 do., '64 ½ and 1 do., '82 Blakley & Co., and unknown Token, Good for | 1 | R. S. Mostly fine. 9
 - 167 Halifax. Gass' Tea Store 1882. L. 988. Ferry Token. L. 455. Robt. Purves, Wallace. L. 451. Unc. The last two, red. 3
 - 168 Nova Scotia & New Brunswick—Success. Ship r. B. 895, L. 443. Very good, rare.
 - 169 Another. Less worn than last, but lightly corroded.
 - 170 W. L. WHITE'S—CHEAP | DRY GOODS | STORE, c above space bet. d and r in DRY. R One | Farthing, etc. Fine, rare.
 - 171 Another, differing. c above d in DRY. STORE is curved more, letters smaller.
- We believe this piece much rarer than the preceding, and that it is the first publication of a variety of this Token.
- 172 Duplicates of pieces in lots 163 to 170. Includes Halifax Ferry Token, White's Farthing, Gass', Purves (1 red), etc. About 42 vars. Mostly good, some fine, a few unc., 2 holed. 142
 - 173 A similar lot, with abt 36 vars., among which, White Farthing, 2 Ferry Tokens. 11 poor or holed, remainder average good. 133

MEDALS, ETC.

- 174 1713 View of Bois-le Duc. (Silvaducensis). R Tempora Optata. Fine, very rare. R 27.
Commemorates Peace of Utrecht by which Nova Scotia was ceded to Gt. Britain.

- 175 1720 Foundation of Louisburg. Louis XV. Boy bust *r.*, by *Du Vivier*. *R* Ludovico — burgum, etc. View of fort, harbor, etc. Betts 143, L. 308. V. fine. *Res.* *Æ* 41.
- 176 1720 A sim. bust, larger hd. and more youthful. Without engraver's name. *R* From same die as last. Betts 144. Perfect. *Res.* Edge with a bee, showing date to be 1861-79. *Æ* 43.
- 177 1758 To brave Adml Boscawen. Bust *r.* I surrender prisoner. Betts 407, L. 855. Fine, very rare. Brass, 25.
- 178 1758 Adml Boscawen took Cape Breton. Bust *r.* with baton. *R* LOUISBOURG. View of town *l.*, harbor *r.*, 7 vessels. *Ex.* Jul 26 1758. Betts 409, L. 854. Fine, very rare. Brass, 23.
- 179 1758 Sim. *R* LOUISBURG HARBOUR. 5 vessels. Betts 406, L. 853. Quite perfect, rare. Brass, 37.
- 180 1758 A dup. of last. Very good. Another, type 178, with long baton. Betts 405. V. poor. 37. 2
- 181 1758 Sim. Bust *r.* without baton. *R* Type of 178. Harbor *l.*, town *r.*, 4 vessels. Betts 404, L. 852. V. fair, holed. Brass, 40.
- 182 1758 *Obv.* from same die as last. *R* Sim. Mortar firing shell, 5 ships. Betts 403, L. 851. Fine. Brass, 40.
- 183 1758 Another, as last. Nearly fine.
- 184 1758 Globe sup. by soldier *l.*, sailor *r.*: *R* LOUISBOURG · TAKEN · MDCCCLVIII. View of the naval assault. Betts 410, L. 857. Fine, rare. *Æ* 44.
- 185 1758 O · Fair · Britannia · Hail. Female bust *l.*, by *Kirk*. *R* Victory march'g *r.* Leg. as last. Betts 411. Fine. *Res.* *Æ* 40.
- 186 (1817) HALIFAX NATIONAL SCHOOL — INST : LVII : GEO : III. Bust *r.*, by *Wyon*. *R* Fear God · Honour the King. Within wreath, Reward | of | Merit. Holed at top, as though for suspension, and injured by fire, yet it is in good condition, and of great rarity. We do not know of a duplicate. L. 480. *Æ* 40.
- 187 (1832) Nova Scotia | Union | is | strength | ✠ Branches. *R* Temperance | Society | Token | of | membership. Pierced, with ring. L. 475. Very rare, perfect. WM. 38.
- 188 Another. Ring gone, but slightly inferior to last.
- 189 1857 Cath. Total Abstinence Medal of the city of Halifax. L. 478. V. rare, perfect. WM. 43.
- 190 Champion of Halifax Harbour, around garter, enclosing shld, on which, a kingfisher *l.* *R* Wrth. Plain field. Swivel with ribbon depending from bar. L. 1525. WM. silver-plated, enclosed by silver band. Perfect, very rare. 32.

191 A

192 C

193 D

194 O

195 18

196 18

197 18

198 18

199 D

200 D

201 18

202 18

203 18

204 18

205 18

- 191 Another. Unpierced, without attachments. Perfect. WM. 31½.
- 192 Communion Tokens. Representing 51 Congregations in 37 different villages and towns in Nova Scotia. Nos. by LeRoux 457, 458, 459, 460, 461, 462, 463, 463a, b, c, d, f, h, i, j, k, l, m, n, q, r, s, t, v, x, 464, 464a, b, c, 465, 465a, c, d, e, 466, 46E. 470, 470e, g, h, j, k, l, n, p, s, t, x, 910, 915, 1256, 1270. Good to fine, chiefly of latter grade. 52
- 193 Duplicates of last, 458, 459, 460, 461, 462, 463, 463a, b, c, i, j, k, q, r, t, v, x, 464, 464a, b, 465, 465d, e, 466, 915. Condition like preceding. 24
- 194 Others of same. 11 differing. Good to fine. 17

NEW BRUNSWICK.

- 195 1843 Hd of Vic. *l.* *R* One Penny Token, etc. Ship. Bronzed proof, slightly impaired, rare.
- 196 1843 ½, 1 Penny. 1854 do. 1861 ½ (rare), 1 Cent. 1864 Cent. St. John ½ Penny Token. Good to fine. 8
- 197 1861 ½ Cent. Very fine, partly bright, rare.
- 198 1862 10, 20 Cents. 1864 5 do (2), 20 do. Poor to good. 5
- 199 Depository of Art. Arms crested. *R* F. M^c DERMOTT, etc., S^{MT} JOHN. N. B. in 7 lines. Good, very rare. Brass, 23.
- 200 Duplicates. 1843 ½, 1 Penny. 1854 do., do. 1861, '64 Cents (together 9), St. John ½ Penny (4). Good to fine, 1 holed. 37

MEDALS, ETC.

- 201 1829 Douglas Medal — King's College | New Brunswick | 1829. *R* TA | APIΞTA | AIΩNIA Wrth. L. 381. Fine. Rare. WM., silvered, 41.
- 202 1860 Another, similar. Different view, and UNIVERSITY OF | NEW BRUNSWICK. Edge milled. L. 398. Said to be awarded annually in silver and gold. Perfect, bronzed proof, v. rare. 38.
- 203 1863 Minerva, bust *r.*, AΘHNA *R* INST : A : SOC : ALUM : etc., wrth. L. 399. Distributed annually in gold. Perfect, bronzed proof, very rare. 36.
- 204 1868 Apollo hd *r.* Blemished in field, with the engraver's name, *B. Wyon* (in the die). *R* Sunbury · Grammar · School · wrth, etc. L. 1350. Bronzed proof, lightly chafed, very rare. 41.
- 205 1872 New Brunswick Prov. Rifle Ass. 1866 Rifleman kneeling *l.*, aiming. *R* SERGT M^J. O'KEEFFE | C. B. T. A. | 1872 (engraved). With swivel and bar. L. 396. Fine, rare. *R* 47.

- ✓ 206 1884 Centennial of Freemasonry—New Brunswick. Masonic arms. *R* Arms of Province sup. L. 1575. Bronze proof. 35.
- 207 Saint John—New Brunswick. Arms of Province sup. *R* Public Grammar School—etc., wrth. L. 1345. Br. proof. Highest parts lightly rubbed, very rare. 38.
- 208 Communion Tokens. Various towns and parishes in the Province. Nos. by LeRoux, 345, 381a, 382, 383, 383c, d, e, 384, 384c, d, 385, 386, 387, 388, 389, 390a, 911, 913, 914. Mostly fine, 1 holed. 19
- 209 Duplicates of preceding lot. L. 383, 383c, d, e, 386, 911, 914. Poor 2, others fine. 11

PROVINCE OF QUEBEC.

- 210 Tokens and Merchants' Cards. Gatineau Pt (4), Hull, Perkin's Mills, St. Henri (5), St. Leon (2), Three Rivers (3). All fine, 1 WM. others brass. 16
- 211 Hunterstown—1852. Pine cone within wrth. *R* Payable in goods. 5-pointed star within wreath. B. 567, L. 597. Good, extremely rare.
- But three specimens known; this is the first that has appeared in a public sale.
- 212 Montreal. "Bout de l'Isle Tokens." All *very rare*. CALECHE. *R* DE L'ISLE | DE MONTREAL | A REPENTIGUY | ON | LACHESNAYE. Fine. 228 A
- 213 As last. *R* DE REPENTIGUY | A | L'ISLE DE | MONTREAL | ON LACHESNAYE. Fine. 229 A
- 214 CHARRETTE. *R* Same as 212. Holed near edge, good.
- 215 As last. *R* Same as 213. Very good.
- 215a A duplicate of the preceding lot. Good.
- 216 Same as 214. *R* DE LACHESNAYE | A | L'ISLE DE | MONTREAL | ON REPENTIGUY. Fine. Clipped, perhaps for identification at night, or for the blind or ignorant.
- 217 CHEVAL. *R* Same as 212. Good, dents on *rev*.
- 218 As last. *R* Same as 213. Good. *Rev*. field inscription weak.
- 219 PERSONNE. *R* Same as 212. Very fine.
- 220 As last. *R* Same as 213. Very good.
- 221 1816 $\frac{1}{2}$ Penny. Bust. *R* Ship. T. S. Brown & Co. 2 varieties. MONTREAL | *British* | MILITIA. An early button, which, with shank removed, served as a coin. Good, rare. 4

222 M

223 A

Mr. F
flourished
no doubt

224 M

225 A

226 U

227 A

228 A

229 A

230 T

231 D

- 222 MAY FORTUNE SMILE ON HER. Man of war *l.* $\text{R} \int$ I. S. KOLLMYER
 — MONTREAL. Field retouched, and V. S. C. in script *mon.* en-
 graved thereon. B. 654. Fine, ex. rare. Æ 23½.
- 223 Another, as last. With C. W. engraved in *mon.* Fine.
 Mr. Kollmyer was a merchant tailor in Montreal, and according to various accounts
 flourished somewhere between 1820 and 1850. These pieces are from button dies and
 no doubt designed for use in maritime service. But few are known.
- 224 Montreal Un Sou Token. *Obv.* in most respects like L. 563. The
 two *must* have emanated from the same die. Two shamrocks
 supplant old bow; a third takes place of leaf *l.*; centre wheat
 head converted into three wheat blades; leaf below rose changed
 to wheat head with stem lengthened; wheat blade pointing to τ ,
 shortened; new double bow. There are *no other* differences.
 $\text{R} \int$ From same die as L. 568. Test cut at edge, on *rev.* Fine.
 B. 712, L. 548b. It is claimed that this, and the following speci-
 men, are the only ones known.
- 225 Another, as last. Poor and pierced.
- 226 Un Sou. From dies discovered 1863. Unc., red, and the only
 perfect impression we have seen. B. 689, L. 549. V. rare.
- 227 Another. The large open and well-defined bouquet. Wrth of 18
 leaves, 16 berries. Of metal, in which brass is more apparent
 than copper. B. 690, L. 553. Very fine and rare.
- 228 Another. Bow of ribbon joining branches, high; with berry at end
 of long stem, on either side. B. 677, L. 555. Good, v. rare.
- 229 Another. Differs on *obv.* only. Bouquet has two shamrocks τ ,
 the preceding has three. B. 676, L. 559. Good, rare.
- 230 The remainder of the Sou Collection, embracing 47 varieties, with
 others differing in plain and milled edges, small and large planchets,
 perfect and cracked dies, etc. Condition of the greater portion,
 fine. A valuable set and difficult to equal. Each numbered in
 a separate envelope, according to LeRoux. 508 (4), 509 (2),
 517, 518, 519, 520, 521, 522 (2), 523, 524 (?), 525 (2), 526 (2),
 527, 536, 537, 538, 539, 540, 541, 542 (3), 543, 544, 545, 546, 547
 (6), 550, 551, 552, 554, 555 (poor), 556, 557, 558, 559, 560, 561
 (2), 563, 564 (2), 565, 566, 567, 568, 569, 570, 571, 572, 574. 63
- 231 Duplicates of the preceding, in separate envelopes as follows,
 LeRoux 508 (2), 509 (2), 517 to 523, 525 to 527, 536 to 546, 547
 (3), 550 to 552, 554, 556 to 558, 560, 561, 563 to 572, 574.
 All different. Mostly good. 48

- 232 Others, not enveloped, all different. Mostly good. 43
- 233 Others, as last, all different. Fair to good, 1 holed. 39
- 234 Others, as last, all different. Fair to good. 29
- 235 The remainder of the Sou Tokens, representing about 25 varieties.
Fair to good, 1 in brass, holed. 204
- 236 1837 Bk of Montreal. Habitant stdg, $\frac{1}{2}$, 1 (2 var.) Penny; Bk of
the People, $\frac{1}{2}$, 1 do.; City Bk, $\frac{1}{2}$, 1 (2 var.) do.; Front view Bk
of Mont., 1842 $\frac{1}{2}$, 1 Penny, 1844 $\frac{1}{2}$ do. Good to fine, 1 unc. 11
- 237 1837 City Bk, Habitant Halfpenny. Bronzed proof. Rare.
- 238 1837 Penny. Front view of Bank of Montreal. CITY BANK on
scroll of *rev.* L. 514a. Fine, very rare.
- 239 1839 Halfpenny. BANK OF MONTREAL. Front and *side* view. *Ex.*
date. R Usual type. Fine, rare.
- 240 1839 Penny. Type of preceding. V. good, extremely rare.
- 241 1842 Halfpenny. Bk of Montreal. Front view. Proof, rare.
- 242 1842 Penny. Type of last. Bronzed proof, very rare.
- 243 1844 Halfpenny, type of 241. Proof, rare.
- 244 1837-44 Duplicates of Bk of Mont., City and People's Bk. Half-
pennies, 28. Pennies, 16. Fair to fine. 44
- 245 T. S. Brown & Co., 2 var.; Jh. Roy's Sou, thin and thick planchets
(the latter fine, parts of *rev.* weak); 1816 Ship. $\frac{1}{2}$ Penny.
Good. 5
- 246 Devins & Bolton. 1867 *Obv.* Type of Canadian Cent. Unc., red.
- 247 Maysenholder & Bohle—Goldsmiths. In field, Established | 1849.
 R Corner St. Vincent & Notre Dame. In field, Montreal. B.
566, L. 575. Fine, rare.
- 248 Another. *Obverse* impression only. Fine, very rare.
- 249 Another. *Reverse* impression only. Fine, very rare.
- The Tokens of M. & B. were first discovered in 1886. It is said that not more than
38 are known, 7 of which are impressions of either *obv.* or *rev.*
- 250 Th^s & W^m Molson—Montreal. A cask. R A still, etc. 1837.
Thin planchet. Unc., light olive, rare. 28.
- 251 Another. About equal to last. Thick planchet. Light olive, rare.
29.
- 252 Others. Small and large planchet. Very good, rare. 2
- 253 Another. Thin planchet. *Plain* edge. Good, very rare. 28.
- 254 Montreal & Lachine Railroad Co. Locomotive *l.* R Third class.
Beaver *l.* Extremely fine, light olive, very rare.
- 255 Another. Fine, rare.

256 An

257 An

258 Fr

258a A.

258b An

The t
both Bret
alogue des

259 We

260 An

261 La

262 Ca

263 De

264 Jan

Dies f
page 74, N

265 Mc

266 Dr

267 A c

268 Ly

269 An

- 43
39
29
varieties.
204
y; Bk of
view Bk
unc. 11
are.
BANK on
ew. *Ex.*
re.
rare.
- 256 Another. Fine, with a few light scratches, rare.
257 Another. Equal to last, light nicks.
258 Francis Mullins & Son. Commerce — Token. Ship *r.* *R* Sharp-
ley. Hd of Victoria *l.* (brass). Fine. 2
258a A. D. Porcheron — \diamond Montreal \diamond In field, B. B. *R* Bust of fe-
male *r.* in Elizabethan style. Edge milled. Fine. Lead. 25.
258b Another as last, with plain *rev.* Fine. 25.

The two preceding pieces are new to us, and they also appear to be strangers to both Breton and LeRoux. We regret our observations on them cannot go beyond catalogue description.

- k. Half-
44
planchets
Penny.
5
Jnc., red.
d | 1849.
real. B.
- 259 Weir & Larminie | Bankers | and | Specie Brokers . | Montreal | C.
E. *R* Encased U. S. 10 Cents Postage stamp. (Gault's patent
1862.) Fine, very rare.
260 Another, as last. Fine, very rare.
261 Late Cards. Archambault, Breton, Cardinal (2 var.), Chess club
(2 var.), Desroches, WM. and \mathcal{A} ., F. S., Singing Soc. (brass),
Gnaedinger, Gravel (B. 640), WM. and \mathcal{A} .. Mostly new and
bright. 13
262 Cardinal's Token. Without Canada above beaver. B. 576, L. 967.
It is stated that but 11 of this variety were struck. Unc. WM.
263 Desroches Token. With date of foundation 1662, instead of 1642.
Name, etc. on tablet, neatly erased. Fine, very rare. WM.
264 Jardin Guilbault | de | . Montreal . *R* Admission | 30 | Sous. L.
602. Fine. \mathcal{A} 24.

Dies found in Birmingham, 1889, from which 98 specimens were struck. See B. page 74, No. 588.

- more than
c. 1837.
ive, rare.
2
28.
ird class.
- 265 Mdme Ireland, Landry (2 var.), Mongeau, Davis & Buie, Phelan
(brass and WM.), V. R. (2 var.), Sclater, Tremblay (2 var., each
in WM. and \mathcal{A}), Witness (2 var.). Mostly new and bright. 16
266 Dr. LeRoux Tokens 974, 975 (brass and \mathcal{A}), 976, brass, 994 p and
r (both \mathcal{A}). Unc., bright. 6
267 A dup. of 974 struck on planchet 33 x 33. Unc., rare. \mathcal{A} .
268 Lymburner, Craig St., thin planchet WM. and \mathcal{A} , thick do. \mathcal{A} .
Another. St. James St., thin and thick do., both \mathcal{A} . Also, 1886
Beaver (Cardinal's *obv.*) *R* Lymburner's heater. In WM. Unc. 6
269 Another, like last piece in preceding lot. B. 581, L. 980. In sil-
ver. Unc., very rare.

- 270 Duplicates of preceding. Montreal & Lachine R. R., Breton, Brown, Cardinal (2), Davis & Buie, Chess club, Devins & Bolton (2), Singing Soc., Gnaedinger, Gravel, LeRoux (3), Lymburner (2), Mullins, Phelan, Roy, Sclater, Sharpley, Tremblay (3), Witness (2), etc. All different. Mostly fine. 30
- 271 Quebec Bk. 1837 $\frac{1}{2}$, 1 Penny (2 var.) 1852 $\frac{1}{2}$, 1 do. Good to fine, 1 partly red. 5
- 272 1852 Quebec Bk Token. Penny. Proof, few nicks *obv.* and *rev.*, rare.
- 273 Bon pour | 1 | verre | a la barre | M. Bacquet. R \ddot{y} Plain. B. 663. Good. Lead. 30.
- M. Bacquet is recorded as a hotel-keeper between the years 1852 and 1861. This Token was not known to collectors until 1892 when a find of them was made. It is the first we have met with, and unfortunately we have not further information regarding it.
- 274 Tokens of J. Shaw and H. Gagnon. Both partly bright, the former very rare in such condition. 2
- 275 LACROSSE | QUEBEC | CHAMPION. R \ddot{y} Two Lacrosses in saltire above ball. L. 1545. Perfect, rare. R 20.
- 276 Duplicates. Quebec Bk Tokens, $\frac{1}{2}$ Pennies (10), Pennies (4), Shaw's cards (3), Gagnon. Good to fine. 18
- 277 Others. Brown (2), Cardinal (2), Chess club, Singing Soc. (2), Gnaedinger, LeRoux (3), Lymburner, Mont. & Lachine R. R., 1816 Ship, Phelan (4), V. R., Roy (3), Sharpley (2), Tremblay (2), Witness. Also, Three Rivers (3), St. Henri (9), St. Leon (3), etc. 25 varieties. Many fine. 44

MEDALS, SOUVENIRS, ETC.

- 278 The Province. Chambre d' agriculture, etc. — Créée en 1852. Arms. R \ddot{y} Exposition Provinciale, etc. Fame flying r. Edge, ARGENT and a hand, indicating 1852-60. L. 610. Edge dents, fair, rare. R 41.
- 279 Lr. Canada. Board of arts & mnfrs. Arms sup'd. R \ddot{y} Honoris | causa, etc. Wrth. L. 613. Fields retouched, otherwise good, rare. R 38.
- 280 A bronzed proof of last, in original case. Perfect. 38.
- 281 Another, as last, without case. Very fine.
- 281a A duplicate of the preceding in every respect.
- 282 Agricultural and Indust. Exhib — Prov. of Quebec. Cwnd arms above branches. R \ddot{y} Sim. ins. in French. Wrth. Plain. L. 1470. Fine, bril. R 50.

283 A
284 An
285 An
286 L.
287 L.
288 A.
289 ST
290 Il
291 Ch
292 An
293 An
294 Ca
295 Le
296 M
297 A
298 Ho
299 A
300 Pri

- 283 A bronzed proof of last. About perfect.
- 284 Another, as last, and in sim. condition.
- 285 Another of same design, differently executed both *obv.* and *rev.* of separates *A. Gerbier-Graveur*. Perfect. Rare. Æ 50.
- 286 L. R. Masson Lieut. Gouverneur P. Q. Arms within branch *l*, ribbon *r*. *R* Plain. L. 1585. Perfect. V. rare. Æ 38.
- 287 L. F. R. Masson — Lieutenant Gouverneur, etc. Arms crested. *R* Plain field. L. 1586. Perfect. V. rare. Æ 50.
- 288 A. R. Angers Lieutenant Gouv. etc. Bust *l* by *Genest*. *R* Plain field. L. 1098. Perfect. V. rare. Æ 50.
- 289 ST JEAN. St. John stdg. *R* TEMPERANCE above branches crossed, on which a beaver *r*. *Ex*. L. B. L. 660, M^c L. 195. Fine, extremely rare. Brass. 31.
- 290 Il ne boira, etc. St. John stdg. Streamer ins. Temperance. *Ex*. Beaver *l*. *R* Crucifixion. L. 1793. Perfect. WM. 41.
- 291 Chateauguay on bar of War Medal, 1848. To M. AUGÉ. CANADⁿ MILITIA. (on edge) For participating in battle of Oct. 16th, 1813. Nicks on *rev.*, otherwise fine, extremely rare.
- 292 Another, with bar for same engagement. Edge, J. BAILLARGEON SERJT CANADⁿ MILITIA. Fine, extremely rare.
- 293 Another, as last. Edge, s. ANIONKON, WARRIOR. Few nicks on *obv.*, dent on *rev.*, otherwise fine. With ribbon. These medals to Indians are rarer than those distributed to militiamen.
- 294 Caughnawaga. Egyptian War Medal, bar ins. THE NILE 1884-85. Edge, 31. FOREⁿ L. JACKSON. CAUGHNAWAGA DET.
- 295 Lennoxville. Hd of Albert Edw. *l*. *R* Bishops' college, etc., 1860. Arms. L. 636. Bronzed proof, perfect, v. rare. 45.
- 296 Montreal. Montreal Taken MDCCCLX, female setd *r*. *R* The CONQUEST OF CANADA COMPLETED. River god reclining *r*. Betts 429. Perfect. V. rare. Æ 40.
- 297 A duplicate of last, in similar condition. *Rev.* from die slightly rusted.
- 298 Hd of Prince of Wales *l*. *R* Visited Canada and inaugurated the Victoria bridge, 1860. The Prince's crest. Welcome. L. 641. Fine. V. rare. Æ 48.
- 299 A bronzed proof of last. One point of hair chafed, otherwise perfect. V. rare.
- 300 Prince of Wales, bust facing, with moustache. *R* Victoria bridge. Opened, etc., 1860. L. 642. About perfect. Rare. Æ 43.

- 301 Another as last in WM.; also Victoria bridge medals, L. 643-644, with cost differing. Perfect. WM. 51. 3 319
- 302 O. from same as 279. R̄ Exhibition of | Canadian industry | etc., 1860, wreath. Bronzed proof, light edge dent, otherwise perfect. L. 612. 320
- 303 Montreal — General Hospital. View of same. R̄ Training school for nurses. L. 1530a. Fine, rare. WM. 22. 321
- 304 Jesus. R̄ Mary. With loop, ring and ribbon. Pope's mil. decoration. L. 1605. Fine. R̄ 19. Buttons. Bank of Montreal, Fire Brigade, 1st Royal Art., Royal Scots, etc. 2 are perfect. 6 322
- 305 Windsor Hotel, 1878. L. 1535. WM. gilt. Also duplicates of P. of W. and Mont. Bridge Medals, 1860. V. fine. WM. 3
- 306 Duplicates of lots 299, good; 302, dents on *rev.* 2 323
- 307 A herald in Greek costume trumpeting before nude champion. McGill University Gymnasium Prize. L. 1854. Perfect, rare. WM. 38. 324
- 308 Minerva hd *l.* by *Carter*. R̄ Hoc Præmium | etc. Donavit D. Davidson | etc., in 6 lines. L. 667. Perfect bronzed proof, v. rare. 41. 324a
- 309 Shakspeare, bust *l.* Tercentenary 1864. McGill College. For English Literature. L. 672. Perfect bronzed proof, rare. 45. 325
- 309a Another, as last; and its equal in every respect.
- 310 Justinianus. Bust facing. McGill Univ. Torrance Medal, inst. 1864, for law students. L. 674. Perfect bz. proof, rare. 45. 326
- 311 Ordre . de . la . Croix . de . St. Pierre — College . Ste. Marie. Inverted cross. Loop and ring. L. 1301. Fine. WM. plated, 31. 327
- 312 A sim. badge, same college. Ordre . de . la . Tiare. Tiara on keys crossed. L. 1302. Fine. 31. 328
- 313 John Calvin. Bust *l.* R̄ . Presbyterian College Montreal . Students Prize . Founded 1872. L. 1228. Perfect bronze proof, rare. 34. 329
- 314 Calvary Cong. Church. R̄ Congregational College of B. N. A. Montreal. F'ded 1839. Arms. L. 1441. Fine. WM. plated. 45. 330
- 315 College . de . Montréal. R̄ 1767 | 1885 wrth. Lions sup., loop attached. Ribbon. L. 1220. Perfect. Brass. 37. 331
- 316 Another, as last, without loop. Perfect. 332
- 317 College of St. Joseph. St. Lawrence, near Montreal. View of college. L. 1233. Perfect. Rare. Æ 43. 333
- 318 Another, as last. Perfect. WM.

- 319 Wesleyan College. Don. A Georgio Bishop. R̄ Physicarum
scientiarum. L. 1232. Perfect. Rare. WM., gilt (awarded
in gold). 27.
- 320 Edward Murphy * Donor. Hd *l.* Founded 1873. R̄ Catholic
Commercial Acad., wrth, etc. L. 1100. Perfect bronzed proof.
Rare. 44.
- 321 Another, as last, *obv.* a trifle less brilliant.
- 322 P. S. Murphy Donavit — Montreal. Bust *r.* R̄ Female setd typi-
fying the church, placing wrth on pupil's hd. *Ex.* Praemivm
Constitvtvm | * A. D. 1874 * A rejected design, of which it is
said but 5 (including this and the following) were struck. L.
1101. V. fine. Æ 50.
- 323 Another. Differing from the preceding (on *rev.* only) in size of let-
ters and spacing of same. 1 in date, below space bet. c and o.
Very fine.
- 324 P. S. Murphy M. C. I. P. Donavit — Montreal. R̄ From same
die as last. L. 1102. About perfect, very rare. Æ 50½.
- 324a A dbl-ptd five-barred cross, on wrth. *Mon.* M. A. on cross. R̄
Politesse et bienveillance. P. S. Murphy — Donavit, wreath. L.
1103c, without surplus metal there shown. Perfect, rare. Æ 30x33.
- 325 Others, *same* as L. 1103; do. a, b, c, d. *Ecriture.* Langue Fran-
caise, Writing, etc. Perfect. Rare. WM. 30. 5
- 326 P. S. Murphy | Donavit. R̄ Music. *Mon.* as on 324a, on a cross
patee. Loop and ring. Others for Excellence, Application, etc.
L. 1103, do. f. g. n. Perfect. Rare. Æ 22 x 25. 4
- 327 John Frothingham. Bust *l.* by *Moore.* R̄ The | British | and |
Canadian | School. Wrth. L. 637. Fine. V. rare. Æ 50.
- 328 Arms of the city and province. R̄ High school Montreal — Wm
Murray prize. Fnd. 1874. L. 1425. Perfect bz. pf. Rare. 57.
- 329 Hd *l.* by *Cague.* R̄ Ins. in 11 lines. Normal School prize medal,
instd by Prince of Wales 1860. L. 638. Fine. V. rare. Æ 55.
- 330 Caledonian Society of Montreal. Highlander within wrth. "We
fear nae foe." R̄ Thistle hd, two leaves. L. 1650a. Fine, ex.
rare. Lead, 27.
- 331 Another; in all respects, as last.
- 332 Cercle Jacques Cartier — Fondé en 1874. Bust *r.* R̄ Plain. L.
1180. Perfect. WM. gilt. 43.
- 333 Tandem fit, etc. Owl on branch. R̄ Natural History Society —
Montreal, etc. L. 651. Fine bronzed proof, very rare. 46.

- 334 Soc. Numis. de Mont. 25th An 1887. Assn de St. Jn Bapt. Fêtes 1874, '78, 84. L. 1613, 1731, '32, '33, '34, '41, '42. Fine, 1 holed. WM., brass. 7 350
- 335 St. Jn Bap. Souvenir de la fête Natnle 24 Juin 1874. St. John with lamb. L. 1730. Fine. Rare. Lead bronzed, 52 x 67. 351
- 336 Another, and like the last, cast, as all are. Metal of silver and nickel. Holed at top. Fine, rare. 352
- 337 Duvernay fondateur. Bust *l.* R̄ Assn. de St. Jn. Bap. de Mont. — 50^e Ann. 1884. Arms. Loop. L. 1743. Perfect. Æ, gilt. 50. 353
- 338 An exact duplicate of the preceding. 355
- 339 St. Patrick's Total Abs. Soc. Montreal — Estad. Feb. 21st, 1841. Man and woman, sup. arms. R̄ Plain. Ring and bar. L. 662. Fine. Rare. ÆR 44. 356
- 340 Union des Cloutiers — Montreal. Two nails crossed. L. 1831. Fine. Rare. Brass. Oval, 21 x 26. 357
- 341 Another, as last. *Obv.* silver plated. Fine. Rare. 358
- 342 Duplicates. Coml Acad. 1103a Col. of Mont. 1220. Num. Soc. L. 1613 (2); St. Jn Bapt., L. 1732 (2), '33 (2), '34, '41 (2, holed), '42 (2), '43. Fine. 14 359
- 343 Dominion Exhibition, Montreal Sept. 1880. View of building. R̄ Souvenir, etc., in 6 lines. Wrth. Unfinished beaver on stems of branches. L. 1502, who states, "only 8 pcs were issued." Perfect. WM. 37. 360
- 344 Another. Sim. Beaver completed; ribbons tie branches. L. 1503. "78 pcs issued." Fine. WM. 37. 361
- 345 Others. Without M. E. Lymburner below building. L. 1504. WM. and wood. Perfect, rare. 37, 36. 2 362
- 346 Others. 1881, '82; also beaver on leaf; horse, and 1891, '92 (2, one rude). L. 1505, '07, '17c. Fine. 1 Æ, others WM. 7 363
- 347 Excursions on the St. Lawrence, 1878, '82 (2), and no date. L. 1450, 1451 (2), 1104b. Fine. WM. (1 Æ). 4 364
- 348 Ice Palaces, and Winter Carnivals 1883-87. L. 1145, '46 (2), '47, '48, '49 (2), '50, '51, '53, '54, '57, '58, '61; also miniature in lead of 1887 Palace, with ribbon and bar. Fine to perfect. 3 brass, others WM. 17 365
- 349 Others. *Obv.* L. 1145 (1883). R̄ L. 1150 (1884), with *Lymburner* and *M. E. Lymburner Mont.* Not in L. Perfect; very rare. WM. 26½. 2 366

- 350 Various duplicates of pcs in lots bet. 348-54. Includes L. 1503 and 1 of last lot. Many fine. 13 var. 20
- 351 Medalets of the Catholic Church. L. 631, do. a, b, 1175, 1300, 1309, 1314, 1321. WM., brass, Æ. Perfect. 8
- 352 Others. Chil. of Mary Medalets, Cong. of Notre-Dame. L. 632 (1892 Ed.), 633. Both rarity 6. Fine. Æ 19 x 23 and 10 x 12. 2
- 353 Archbrotherhood of St. Jos. L. 1110, R⁶. Cong. Notre Dame. L. 1303 (2 var.). All perfect, rare. Æ 18½ x 23. 3
- 354 Children of Mary, Cong. of Notre Dame. L. 1323. R⁶. Perfect. Brass, plated. 22 x 30.
- 355 T. Jas. Claxton — Supt. Hd r. West. Cong. Church. L. 1435, '40. Fair. WM. 45. Also dups. of L. 1314, '21. Both fine. 4
- 356 Mont. Young Mens Chris. Assⁿ 1872. View of structure. R Dates of foundation, etc. L. 1880. Bzd pf. Scarce. 45.
- 357 Nicolet. Seminarium Nicolet, etc. View of building. R St. Jos. holding child Jesus. Feet and ankles below robe. L. 1225, who states only 4 issued. Perfect, ex. rare. WM. gilt. 44.
- 358 *Obv.* as last. R Sim. Robe of Joseph differs; only the toes of feet show. L. 1226. Perfect, rare. WM. gilt. 44.
- 359 Another. R Label, wrth. L. 1227. Perfect, rare. WM. silvered. 44.
- 360 *Obv.* same as *rev.* 358. R As last. Not in L. Perfect, ex. rare. WM. silvered. 44.
- 361 Duplicates of 358 and 359. Fine and perfect. 2
- 362 Quebec. 1690. Hd. Louis XIV r., by *Dollin*. R Female std. l. *Ex.* KEBECA LIBERATA | M.DC.XC. Betts 72, L. 305. Perfect. *Res.* Æ 41.
- 363 Another. Sim. by *Mauger*. R From same die as last. Betts 69, L. 306. Perfect. *Res.* Æ 42.
- 364 Another. A still dif. hd. by *R(oettier)*. R From same die as 362. Betts 70, L. 307. *Res.* (1845-60.) Fine. Æ 41.
- 365 1759 Wolfe; bust l. R Monument, mil. trophy. *Ex.* QUEBECAR | SEPT. XIII etc. Betts 422, L. 863. V. fine; rare. Æ 37.
- 366 1759 BRITANNIA; hd. l. R QUEBEC TAKEN etc.; Victory before mil. trophy. Betts 421, L. 864. V. fine. Æ 39.
- 367 1839 Presented | TO | Bro^r. Tho^s Cook | BY THE | DURHAM LODGE | OF | SWOLLEF DDO (*sic*) | FOR HIS SERVICES AS | F. R. | QUEBEC OCT^R 22. 1839. R Hands joined etc.; all engraved. Border of 5 circles; loop. Fine, *unique*. Æ 33.

- 368 Université Laval—Arms, etc. \mathcal{R} Prix de Poésie Française. Wrth. L. 665. Perfect; v. rare. \mathcal{A} 40.
- 369 Bust of Mgr. de Laval r . by *Johnson*. \mathcal{R} Disciplinæ Theolog. Acad. etc. Wrth. L. 1840. Perfect; v. rare. \mathcal{R} 39.
- 370 A perfect bronzed proof from same dies as last. Rare. 39.
- 371 Ulric J. Tessier. Bust r . by *Genest*. \mathcal{R} Wrth. Prize for law students. Edge indicates 1880— L. 1854a. Pfct; v. rare. \mathcal{A} 50.
- 372 View of citadel, etc. \mathcal{R} High School of Quebec, wrth. The | Henry Fry | English | Prize. L. 639. Pfct bz. pf.; ex. rare. 44.
- 373 Hermit setd l . in cave, with book and lamp. \mathcal{R} In seminario Quebecensi etc. Wrth. L. 655. Perfect; very rare. \mathcal{A} 44.
- 374 1877 Exhibition Souvenirs. L. 1500, '01. V. rare. Pfct. WM. 2
- 375 1880, '89. St. John Bapt. Socy. Souvenirs. L. 1735, '36, '37 (3 var. of finish), '38, '39, '40 (\mathcal{A}), '46. Fine to pfct. Several rare. WM. 9
- 376 1886 Card. Taschereau. Bust l . L. 1140. 1892. Since L. Sm. bust in oval. \mathcal{R} Plain size 48. Jesuits' Estate bill. L. 1561. Rare; perfect. WM. 3
- 377 Duplicates. St. John Bapt. L. 1500, 1735, '36, '46. Temperance, 1793. Fine. WM. 6
- 378 **St. Anne de Beaupre.** Church Medals of this noted place. L. 1670 to 1713, excepting 1678, '79, '85, '96, '98, 1703; also 3 not in L. Includes largest cross with 10 line ins., Three Rivers Steamer, etc. WM., brass and \mathcal{R} (4 of latter). Mostly perfect, some v. rare; numbered in sep. envelopes. 46
- The little sanctuary at this place contains a shrine, renowned for the cures said to have been effected, of the lame, etc. In the building are a great number of abandoned crutches.
- 379 **Terrebonne.** St. Theresa Church Centennial, 1889. L. 1211, WM, 38; Varennes, St. Anne Medal. L. 1725, brass. Others of Pt. du Père (Father Point). Brass (2), \mathcal{R} (3, small). Fine. 7
- 380 Duplicates of last two lots. 3 in silver. 24 vars. Fine. 27.
- 381 **Three Rivers.** War Medal. THE NILE 1884-5. Edge ins. 153 BOAT^N P. GRANDMAISON. THREE RIVERS CONT^{CI} Accompanied by the Khedive's bronze Star. Both with ribbon and fine. 2
- 382 Communion Tokens. Montreal, Quebec, and other cities, towns, etc., in the Province. L. 614, '15, '16, '16a, b, c, d, f, g, h, i, j, k, '17, '18, '19, '20, '21, '22, '23, '24, '24a, '25, '27d, f. Some very rare; good to unc. 25

383 I

384 I

385 I

386 I

387 I

388 I

389 T

390 C

391 P

392 P

393 T

394 i

395 B

396 B

397 B

398 D

399 D

400 A

- 383 Duplicates of last. L. 615, '16 (2), '16b, c, j, '17 (4), '18, '19 (2), '21, '22, '23 (4), '24, '24a, '25. Good to unc. 22

ONTARIO.

- 384 1812 Ship. R̄ Brock ins. Plain and milled edge. 1815-33. Sloops, Brocks, cask, etc. 1 brass. ½ Pennies, some scarce. Fair, fine. 19
- 385 1816 Brock monument Halfpennies. Varieties. Fair to fine. 10
- 386 1821 ½d. Sloop. R̄ Cask ins. JAMAICA. Good, rare.
- 387 1821 ½d. Sim. Cask ins. UPPER | CANADA. Good, rare.
- 388 Duplicates of pieces in 4 preceding lots. About 12 var. 2 holed. Fair to fine. 35
- 389 Tokens and merchants' cards. Camlachie, Carlton Farm 2, Clarkston 2, Ft. Erie, Hamilton 4, Kensington Dairy 3, Kingston, Lindsay 2, McL. Mills. Brass, nickel, al., and 2 rubber. Fine. 18
- 390 Ottawa. Bazar St. Anne. 4, Cagne, Campeau, Cassault, Cote, Desilets, Dompierre 4, Elec. Ry, Goodall, Iliffe 3, Key Trust, Pautet 2, Larue, Marineau (2), McEvoy 3, Michaud, Owls' Club, Lalonde, Pritchard & A. 3, Renaud 3, St. Jos. Asyl^m 2. Æ, WM., brass, nickel, 1 celluloid. Fine. 38
- 391 Peterborough, St. Catharine's 6 (3 var. of A. Bain), St. Mary's, Thorold. Various metals, 2 rubber. Fine. 9
- 392 Port Hope. J. Hooper | Numismatist | Port Hope, Ont. R̄ Coins | Medals | and | Tokens. L. 986, '87. Very rare. Unc. Æ 28. 2
- 393 Toronto. Lesslie & Sons. ½ Pennies. Varieties. Good. 5
- 394 1822 Two pence of last firm. Some nicks, still a very good specimen of this rare token. Medium olive.
- 395 Bk of Upper Canada ½, 1 Penny pcs. 1850, '52, '54, '57. Plain and crossed 4 of Penny. Mostly fine. 9
- 396 Banfield's card. The Union must, etc., 1885. L. 965. Unc., rare. Æ.
- 397 Banfield. L. 994f Al., 1511, Æ, '17d Al. Another, O. 994d. R̄ 1572a Al. All scarce or rare. Fine to unc. 4
- 398 Dairy Co. (3 var.), Eve. News, Globe, Langlois (2 var.), Schmidt (2 var.), Stroud, and R. Bayne (2 var.). Fine to unc. 12
- 399 Dups. of pcs in lots 393-8. Banfield 965, Lesslie 2d (poor), do. ½d (5 var.), Iliffe, 1854 Penny, both 4's, etc. Good to fine. 19 var. 24
- 400 A sim. lot. Lesslie 2d, poor, holed; ½ do., (4 var.), Iliffe, '54 Penny, both kinds, 15 differing. Good to fine. 21

MEDALS, SOUVENIRS, ETC.

- 401 **The Province.** UPPER CANADA — PRESERVED. View of Niagara river, Lake Erie and Ont. Lion and beaver *l.*, eagle *r.* $\text{R}\ddot{\text{V}}$ For | Merit, etc., wrth. L. 866, McL. 259. Perfect, rare. R 51.
- 402 A perfect bronzed proof, same dies as preceding. Rare.
- 403 Another, as last in all respects.
- 404 Another, differs in no wise from last two.
- These Medals were struck in gold and silver for distribution among those who distinguished themselves in the war of 1812. All of the preceding are from dies very slightly rusted.
- 405 Wm. Dummer Poweill and Anne Murray. Hands clasped hold torch. Intermarried | 3d October | 1775. $\text{R}\ddot{\text{V}}$ To | celebrate | the | fiftieth | etc., 1825. L. 730. Fine, ex. rare. $\text{A}\ddot{\text{E}}$ 38½.
- 406 Soldier kneeling *l.* aiming. $\text{R}\ddot{\text{V}}$ Presented by the Ont. Rifle Assn, etc., 1812-37-66. L. 1601. Perfect, rare. WM. 39.
- 407 Consolidation of the Statute law, Prov. of Ont. Justice seated *l.* *Ex.* 31st December 1877. $\text{R}\ddot{\text{V}}$ 10 line ins., wrth. L. 1565, McL. 261. Abt perfect, extremely rare. In orig. case. $\text{A}\ddot{\text{E}}$ 78.
- 408 Arms. $\text{R}\ddot{\text{V}}$ Agricultural Assn — Upper Canada. In field (label), | Life | Member. L. 700, McL. 265. Perfect, v. rare. WM. 32.
- 409 Sim. design. $\text{R}\ddot{\text{V}}$ Agricultural | Assn | Upper | Canada, wrth. L. 702, McL. 267. Very rare, fine. WM. gilt. 46.
- 410 Agricultural and Arts Assn of Ont. Arms. $\text{R}\ddot{\text{V}}$ Wrth. By *Ward*. L. 1462, McL. 268. Very rare, perfect. $\text{A}\ddot{\text{E}}$ 42.
- 411 Minerva, helmeted hd *r.* $\text{R}\ddot{\text{V}}$ Educational Dept. — Ont. Presented | to | etc. L. 1331, McL. 272. Perfect, very rare. WM. 44.
- 412 Curling scene. Scotch Arms. $\text{R}\ddot{\text{V}}$ Royal Caledonian Curling Club, etc. Ribbon, bar. ONTARIO | BRANCH. Fine, v. rare. R 40.
- 413 **Berlin.** 1886 Saengerfest, '88 Band and Firemen, Brockville, '84 Odd Fellows, Halton Co., '84 Temperance; all WM. Brantford, Brant Monument; $\text{A}\ddot{\text{E}}$. Perfect. 5
- 414 **Brantford.** 1886 Brant Monument. L. 1130. Perfect. WM. and $\text{A}\ddot{\text{E}}$. 2
- 415 **Centreville Mills.** The Glorious Memory. Equestrian statue *l.* $\text{R}\ddot{\text{V}}$ Presented | to | —By the | Loyal Orange Assn | B. N. A. | For | valiant conduct at | Centreville Mills | on 12 July 1840. Fine, rare. WM. plated. 38.
- 416 Another, precisely like the preceding.

417

417A

418

419

420

421

422

423

424

425

426

427

428

429

430

431

432

433

434

435

- 417 **Cobourg.** Universitas Victoriae Collegium. Vic. hd *l.* By *F. B. Smith.* R̄ Praemium, etc., 1860, wrth. Pfc̄t bzd pf, rare. '45.
- 417a Another, by *Wyon.* Arms cwnd. R̄ Wreath. L. 1852. Perfect bronzed proof, very rare. 30.
- 418 **Fort Erie.** June 2nd 1866. Cannon *l.* R̄ Presented by the — County of Welland. Fine, very rare. WM. 36.
- 419 Another, as last. Perfect. Silver-plated.
- 420 Another, in red copper, and the only one we 'have seen. Perfect, extremely rare.
- 421 **Glencoe Lodge.** — I. O. O. F. 133. Eye on star. R̄ Friendship, etc., 3 links. Loop, ring. Brass, cast, plated. Scarce. 54.
- 422 **Hamilton.** 1887, '89 Carnivals, '91 11th Saengerfest (2 var. in Al.) Excelsior. L. 990. Ingersol, Mason & Co.'s Jubilee. Fine. WM. 6
- 423 **Kingston.** Queen's University — etc. Arms. R̄ Wreath. By *Wyon.* L. 1856. Perfect, very rare. In orig. case. R̄ 41.
- 424 **London.** Arms of the city. R̄ Plain. Raised protective borders. L. 1461. Perfect, very rare. R̄ 40.
- 425 City arms. R̄ Stanley, bust *l.* 31. Dif. arms on cartouche. R̄ Westn Fair Assn — London, Can. 38. Perfect, rare. WM. 2
- 426 **Oshawa.** 1883 K. of L. Demonstration. Fine. Cast iron. 62.
- 427 **Ottawa.** 1830 O Mary, etc. Virgin stndg. R̄ College of Ottawa, etc., heart, cross. L. 1322. Fine, very rare. WM. 32.
- 428 1846 Irish Cath. Temp. Soc. L. 741. Lansdowne Park 1884-90. S. J. B. Soc. '85-88 (3 var.), etc. Perfect. WM. 7. Scarce. 10
- 429 Socy St. Peter, Fondée en 1873. Bust on dbl-pointed cross. Bar, crossed keys. Ribbon. Perfect. Brass gilt, 40. (Over all, 80.)
- 430 War Medal. "The Nile 1884-85" on bar. 302. BOAT^N A. TREMBLY. OTTAWA. CONT^{RE} on edge. Fine, rare.
- 431 Ponam in, etc. Archbishop's arms. R̄ Trahe nos, etc., arms of the Diocese. L. 1099. Perfect, very rare. Æ 51.
- 432 Univ. Collegii, etc. Arms. R̄ Esto firmus, etc. Globe bet. youth and church personification. L. 1851. Very fine, rare. Æ 52.
- 433 Owen Sound. Hort. Soc. Port Perry 1886 (2 var.). Stratford. Sarnia Firemen. Fine, scarce, 1 rare. WM. 6
- 434 MH ΛΗΓΟΙ, etc. Victory *l.* By *Wyon.* R̄ Universitas Torontonensis, wrth. McL. 273, L. 745. Fine bzd pf, v. rare. 51.
- 435 Porro Altiora, etc. Hawk soaring *r.* R̄ Wrth, plain field. The Jamieson Medal. L. 748. Fine bzd pf, v. rare. 35.

- 436 Morborvm cavsas, etc. Crest, arm and serpent. R̄ Propter Medicinam, etc. R. N. Starr, M. D. L. 747. Fine bzd pf, rare. 34.
- 437 Collegivm . S. S. Trinitatis . Apvd . Torontonenses. Arms surmounted by Bishop's mitre. L. 1230. Rare, perfect. WM. 38.
- 438 University College. Arms. L. 1231. Perfect, rare. WM. 40.
- 439 Another. The Cawthorne Medal. L. 1234. Perfect, rare. WM. 48.
- 440 Toronto Col. Inst. U. C. College "J. Herbert Mason Medal." Normal School. L. 1810, 1235, 1331c. All R4. Fine. WM. 3
- 441 Toronto Public School Board. Arms, civic crest, with beaver. R̄ 8 years | good conduct | etc. L. 1331b. Pfct, v. rare. R̄ 29.
- 442 Sim. R̄ 4 years | good conduct | etc L. 1331a. Perfect bzd proof. Very rare. 35.
- 443 Exhibition Phila. | 1876 | I. L. Rawbone | Toronto | Pa.ent cart-ridge creaser. Engraved on *rev.* of Canadian Award Medal. Type of lot 130. See McL. 484. Fine, v. rare. Æ 41.
- 444 Welcome — Princess-Marquis. Busts vis-a-vis. R̄ Exhibition | 1879. Beaver, wrth. L. 1517. Fine, rare. WM. 32.
- 445 Opened Septr 5th | 1879, below building. R̄ Industrial Exhibition — Assn of Toronto. Arms, various scenes. L. 1363. Fine bronzed proof, v. rare. 64.
- 446 Another, also by *Elkington*. Differs on *O.* only. Panel takes place of inscription and date. L. 1464. Fine bronzed pf, rare.
- 447 An exceedingly close copy of last, by *Ellis*. R̄ From same die as preceding. L. 1465. Perfect, rare. WM.
- 448 Marq. of Lorne and Princess Louise, hds jugate /. R̄ Type of last. L. 1466. Perfect bronzed proof, very rare. 45.
- 449 1884 Semi-Centennial. Souvenirs of the celebration. L. 1508, '09, '16, 1815 to '22. Fine, 2 holed. Mostly WM. 15 to 41. 12
- 450 1885 Fish Creek | Batoche | etc. R̄ The | Dominion | etc. Also R̄ Banfield's card. L. 1510, '11. Fine, scarce. Æ 32. 2
- 451 1886 Exhibition. L. 1512. 1887 Hds of Marq. and March. of Lansdowne. L. 1467. Both WM. 1891 Aluminum Souvenir. Perfect. 3
- 452 1887 Dominion & Industrial — Exhibition Toronto. Arms in three shields. R̄ Same as *Obv.* lot 447. L. 1468. Perfect bronzed 'proof, very rare. 64.
- 453 Arch-confraternity of the Holy family, Jesus, Mary and Joseph stndg. R̄ Their hearts. By *M. Hickey* | *Toronto*. L. 1557a. Fine, very rare. Brass, plated. 30 x 35.

- 454 A | F—B | No. 1. In field, We | preach | Christ, on cross patee. Fine. 30 x 31. St. Andrew's Socy. L. 1651. A. W. Burke, etc. R̄ Health, Antimorbific. L. 972. Eve. Mail, 1889. Ring and ribbon, also Æ without ribbon. L. 1562. All others WM. Scarce. 5
- 455 Training school | for | nurses | Toronto General Hospital, etc., wrth. R̄ Blank. L. 1530. V. rare. WM. 30 x 35.
- 456 **Waterloo**, Ont. Beaver *l.* Aug. | 20th 21st 22nd | 1890. R̄ Tenth Sængerfest, etc. Sængerbund. L. 1635a. Fine. WM. 38.
- 457 Duplicates of preceding. Various. Berlin, Hamilton, Ingersoll, Ottawa, Stratford, Toronto. Some scarce. 19 WM. Fine. Æ. Tokens, etc. 23
- 458 Communion Tokens of various towns, etc. in the Province, Hamilton, Kingston, Toronto, etc. Numbers by L. 709, '10, '11, '12a, b, '13, '14, '14a, b, c, '15, '16, '17, '18, '19, '19a, b, c, '20, '20a, '21, '21a, '22, '23, '23b, c, e, f, g, h, i, j, l, m, n, p, q, r, s, t, u, x, y, '24, '24a, c, g, h, i, j, k, '25j, p, 916 and McL. 104 (L. 384f). Good to fine, many rare. 56
- 459 Duplicates of preceding; L. 710, '11, '12a, '13, '15, '16, '17, '18, '19a, b, c, '20, '20a, '21, '22, '23, '23c, e, f, g, h, j, l, m, n, q, t, x, y, '24, '24a, c, g, h, j, k. Condition as last. 37
- 460 Others. L. 710, '12 (2), '13, '19a, '20 (3), '21 (2), '23c, e, q, '24c. Mostly good to fine. 14

MANITOBA.

- 461 Indian and soldier sup. arms of Prov. R̄ Manitoba | Rifle | Assocⁿ | Inst. | 1871. L. 1589. Perfect, v. rare. WM. In morocco case. 38.
- 462 Universitas Manitobanensis. Arms within corded circle. 1877. R̄ Wrth. L. 1855. Perfect, v. rare. WM. plated. 42.
- 463 Presented by the Bishop of Rupert's Land. Arms. R̄ In thy light, etc. Eagle *l.* By *Wyon*. L. 1212. Pfc't bzd proof. Morocco case. 39.
- 464 Boyces | James St. | Winnipeg | Man., etc. Souvenir, 1891 Industrial Exhibition. L. 994g. Fine. Al. 33.

NORTHWEST.

- 465 Dominion of Canada — Chief's Medal. R̄ Indians of the North West Territories. These legends are on a border, added to the Confederation medal, the whole being an electrotype, silver-pltd, officially issued and distributed as such. L. 1190. Fine. 95. (See also lot 127 which preceded this.)

- 466 Another, precisely like the last.
- 467 Another, without the border (being the Confed. medal exact), also an electrotype, said to have been given in this form, to some of the minor chiefs. Fine. 77.
- 468 War medal. Victoria, head *l.* R North West | 1885 | Canada. Edge, J^r SERGT MAJOR CHARLES A. GRAINGER. GOV. GEN. BODY GUARD. Fine.
- 469 Another, to PTE A. HANSEN 91ST W. L. I. Extremely fine, brilliant.
- 470 Another, G^{NR}. R. P. ISAACSON. M. G. A. Fine.
- 471 Another, L^T GEO: A. LABRANCHE 9TH BAT. V. Q. Ex. fine, brilliant.
- 472 Another, SDT. J. PARISAULT. 65. BAT. Fine.
- 473 Another, name erased, swivel bar gone, showing small hole through which it was fastened. Good.
- 474 Another, with a well engraved bar, A. MAREAU | BLESSE A FORT PITT. Edge, SDT. A. MOREAU. 65 BAT. Fine.
- 475 Another, with SASKATCHEWAN bar. Edge, 867 G^R J. HARRINGTON. "A" BATTY C. A. Fine.
- 476 Another, as last, S^{DT}. A. BOISVERT. 65. BAT. Fine.
- 477 Another, like 475, A. G. ROSS. W. F. BATTERY. Fine.
- 478 Another, with the inscribed bar at *end* of ribbon. Edge, N^o 813 BOMB^E P. MAHONY "B" BATTERY R. C. A. Very fine.
- 479 Miniature North West medal. Perfect. R 17.
- 480 Another, an exact duplicate of last.

All of the preceding have ribbons excepting 469, '71, '72, '73.

BRITISH COLUMBIA.

- 481 **Revelstoke.** W. Cowan | * | Revelstoke | B. C. R Good for | one | 15c | * Drink * L. 1065t. Good. Brass, 24.
- 482 **Vancouver.** 1892 Wreck of S. S. Beaver. Lion Gate, Vancouver, B. C., etc. Scene of wreck. R This metal | is out of the | S. S. Beaver. | etc., in 9 lines. Fine, rare. A 43.
- 483 String of Wampum? Consisting of 27 white, and 24 purple beads varying from $\frac{3}{8}$ to $1\frac{1}{8}$ inches in length.

ANCIENT.

- 484 **Greek Silver.** Athens. About B. C. 430. Athena hd *r.* AΘE Owl *r.*; behind, crescent and olive spray, well centered. Fine. *Tetr.* 25.
- 485 Macedonia. Phil. II, B. C. 359-336. Laur. hd *r.* R ΦΙΛΙΠ ΠΟΥ Boy rider *r.* Amphipolis mint. Good. *Tetr.* 24.

- 486 Alex. III, the Great, B. C. 336-323. Herakles hd in lion skin *r.*
 R Zeus setd *l.* Good. *Tetr.* 25.
- 487 Under the Romans, B. C. 158-146. Artemis hd *r.* on Macedonian shld. R MAKEΔONΩN, etc., and club within oak wreath. Fine. *Tetr.* 30.
- 488 Phistelia, B. C. 420-400. Hera hd and lion. Sybaris, B. C. 453-448. Poseidon and dove. Fine, both size 10. 2
- 489 Syracuse, B. C. 405-345. Arethusa hd *l.*, around, four dolphins. R Quadriga *l.* P., type 195. Fine. *Rev.* not well centered. *Tetr.* 25.
- 490 Thebes, B. C. 550-480. Boeotian shld. R Mill-sail pattern. Type, Poole, p. 67, No. 4. Good. Thick *Stater.* 17.
- 491 **Greek Copper.** Etruria (2, 1 poor); Parthia, small. Egypt. Ptol. II, B. C. 284-247. A large coin, in good condition. 45. 4
- 492 **Judaea.** Alex. Jannæus, B. C. 105-78. Sun, 8 pts. R Anchor. Another, ins. in 7 lines. R Cornucopias. Good. Herod the Gt., B. C. 37-A. D. 4. Same type, fair. 3
- 493 Augustus, 33d yr=A. D. 6. Ear of corn. R Palm tree. Fair. Tiberius, TIB | KAI | CAP, wreath. R A palm. Good. Herod Agrippa, A. D. 37-44. 3 ears of corn. R Umbrella. Good. 3
- 494 Claudius, A. D. 41-54. Palm branches crossed. R Ins. in 4 lines. Wrth. Nero, A. D. 54-68. Palm. R NEP | WNO, wrth. Good. 2
- 495 Nero and Britannicus. 2 shlds crossed. R Palm tree. Simon Nasi, A. D. 67-68. Vessel with 2 handles. R Vine leaf. Gd. 2
- 496 Duplicates. Alex. Jannæus (2), Tiberius, Herod Agrippa. Fair. 4
- 497 Others. Alex. Jannæus (2), Nero, Simon Nasi. Good. 4
- Pieces in lots 492 to 497 are fully described in separate envelopes and numbered by Madden.
- 498 **Rome.** Consular Denarii. Crepusia, B. C. 84. Julia, B. C. 63-44. Also, Faustina I (Imperial). Good. 3
- 499 Imperial Denarii. Pompey (B. C. 36, after his death). His hd *r.* R Anapius, Amphinomus, etc. Neptune. Imperfectly centered. Fair, rare.
- 500 Julius Caesar, B. C. 44. CAESAR DICT PERPETVO. Veiled head *r.* R Venus holding small victory. Fine, rare.
- 501 Augustus. DIVO | AVGVSTO | S. P. Q. R. Emperor conducting quadriga of elephants *l.* Struck by Tiberius, A. D. 35. Fine, rare. G. B.
- 502 Nero, A. D. 54-68. Laur. hd *l.* R Temple of Janus. Fine. G. B.
- 503 Another. R Triumphal arch sep. s—c. Good. G. B.

- 504 Galba, A. D. 68-69. Hd r. R̄ Lib. stdg. Fine, patinated. G. B.
- 505 Vespasian, A. D. 71. Hd r. R̄ Rome stdg l. Fine. *Obv.* field retouched. G. B.
- 506 Another. A. D. 71. JYDEA CAPTA. Judea setd beside trophy. Gd, rare. M. B.
- 507 Another, sim. R̄ Palm tree bet. shlds, cuirass and helmet l., Judea setd r. Good, rare. M. B.
- 508 Titus, A. D. 80. Hd l. R̄ JVD CAP. Palm tree bet. Jewess setd and Jew stdg. Good, rare. G. B.
- 509 Domitian, A. D. 85. Head r. R̄ GERMANIA CAPTA. Trophy bet. female setd l. and male captive stdg. Good, rare. G. B.
- 510 Trajan. R̄ The gt. circus, obelisk in centre. C. 545 (60 fcs.). *Obv.* poor, *rev.* fair. Another; R̄ A licitor burning papers. C. 513 (63 fcs.). Poor. G. B. Traj. Decius. M. B. Constantius II. Gratianus. S. B. Fair, good. 5

MODERN.

- 511 **Copper Coins.** 1760 Voce Populi. 1783 Popoli. Good. Kentucky Cent. Stars in triangle. Plain edge. Fine. 3
- 512 Kentucky Cent, as last. Bermuda, 1793 ½d. Good. 2
- 513 Barbadoes. 1792 ½d. Negro hd. I. SERVE. Moses Tolanto, ½d. Both fine. 2
- 514 Kingston, Jamaica. Thomas Lundie & Co. 1844 Steamship l. (Brass.) Wm. Smith. Penny. Arms supt. Both fine and scarce. 2
- 515 England. Geo. III, 1797 ½ Penny. Fine; do. Penny. A beautiful specimen, light olive, some orig. red; a choice pair. 2
- 516 France. Monneron Bros., 1791, 14th Sept.; do. '92, Hercules and pyramid; also, France receiving the oath. 1793 Aout, 5 Dcms. All fine. 4
- 517 Spain. Ferd. and Isabella, 1474-1504. Octavo. F. and Y. cwnd. Cuarto and Dbl de. Castle. R̄ Lion. Good. 17, 26, 30. 3
- 518 Liberia. 1847 2 Cents. Perfect bronzed proof.
- 519 A varied lot, including some tokens, U. S. (few), Bahama, Barbadoes, Bermuda, England, Ireland, Man, France (mostly early and fine), Sarawak, etc. A few base, some duplicates, poor, 12 holed, others poor to fine. 157
- 520 **Silver Coins.** U. S. INTR. REVENUE * Scales above shld, within circle. Below, 5.00 02. | 9: 91½ F. | \$7.95. R̄ T. FILLION. Entire type incuse. Fine, extremely rare. 26 x 54.

521

522

523

524

525

526

527

528

529

530

531

532

533

534

535

536

537

- 521 **Curacoa.** 2 Rls. Cinquefoil counterstamped on sextant of 8 R. pc. Edge, 12 crenations. 3 Rls. Sim. 3 in circle. Edge, 9 crenations. Martinique. 3 Esculins. $\frac{1}{4}$ cut from 8 R. pc. Zay, 42. Good to fine, none common. 3
- 522 **Dominica.** Cut Dollar. A clean circular cut of $15\frac{1}{2}$ *mlm.* from centre of 8 R. 1798. Fine, rare. See our Catalogue No. 4, lot 229, Cent. Am., W. I. and So. Am.
- 523 Another. $16\frac{1}{2}$ *mlm.* from 20 Rls, Jos. Napoleon, 1810. Good. Also, Mex. Real, Chas. III, 1776. Poor. 2
- 524 Two Bits. Scolloped circular planchet. D in script, star within. Fine, scarce. \mathcal{R} 15.
- 525 **Guadeloupe.** Esculin, $\frac{1}{2}$ part of 8 Rls, wedge form. Stamped G. Zay 4; and same shape, stamped L.B. in script. Good. 2
- 526 Gourde. 8 Rls, \mathcal{M} mint 1802, from centre of which a lozenge form 11 x 11 has been cut, 4 crenations on each side, also stamped G cwnd. Good.
- 527 Another. Cut measures 9 x 9 on 8 Rls, 1805. Good.
- 528 **St. Lucia.** 15 and 30 Sols, cut similar to those in lot 521, stamped with one circle or ring, otherwise similar to Z. 64, 65. Fine. 2
- 529 $\frac{1}{4}$ Gourde. S. L. linked, thrice stamped on $\frac{1}{4}$ of 8 R. Z. 67. Fine, very rare.
- 530 **Great Britain.** Channel Islands. Billon Didrachm. Type Evans Pl. I, No. 1. Copper Styca. Aethelred II, Northumbria, EANRED. Fine. 2
- 531 Mercia. Burgred, 852-74. Penny. Hawk., type 2. Hugerred, moneyer. Very fine.
- 532 Sole Monarchs. Aethelred II, 978-1016, Irish type; Cnut, 1016-35, Hawk., type 8. Both London Pennies and fine. 2
- 533 Others. Aethelred II, "Crux" type; Cnut, a var. of last, also London mints. Both very fine. 2
- 534 Edward the Confessor, 1042-62. Bust r . York mint. Good. Another. Bust l . Lincoln. Very fine. Pennies. 2
- 535 Hy VIII. Groat, 3d coinage. Good, silver. Mary. "Veritas" Groat. Good. 2
- 536 Eliz., 1562. Milled 6d. *m.m.* star. Chas. II. Maundy set, 1, 2, 3, 4d. 1675-9. All very fine. 5
- 537 Victoria, 1887. Jubilee set, 3, 6d. (the first type), Sh., Florin, $\frac{1}{2}$ Crown, Dbl Florin and Crown. Fine. 7

- 538 Anglo-Gallic. Edward, the Black Prince, 1355-75. Denier (clipped) and Gros. Bust facing and in profile. Good, silver. Henry V, and VI, 1413-61. Billon $\frac{1}{2}$ Groat. Good. 3
- 540 France. Hy II, 1550. Base Douzain; 1554 and '57, var. of Testoons, with busts. *m.m. m.* Good and fine. 3
- 541 1558 Testoon. Small bust. *m.m. k.* '58 do. Large bust. *m.m. m.* Both fine. 2
- 542 Chas. IX, 1556. Test. Bust *l.* *m.m. h.* Good. Chas. X (1589-90). $\frac{1}{4}$ Ecu, dated 1597. *m.m. t.* Fine. 2
- 543 Hy III, 1575. Franc. *m.m. a.* Date on *rev.* 1581 do. Date on *obv.* *m.m. m.* Both with bust *r.* Fine. Sizes 35, 36. 2
- 544 1582 Franc. *m.m. t.* Fine. 1587 $\frac{1}{2}$ do. *m.m. g.* Ex. fine and sharp. Both bust *r.* 35, 30. 2
- 545 Louis XIII, 1643. 5, 15 and 30 Sols. Bust *r.* R Cwnd arms. The 15 is good, others sharp, brilliant. 20, 27, 33. 3
- 546 Louis XIV. 15, 30 Deniers, $\frac{1}{2}$, $\frac{1}{4}$, $\frac{1}{2}$, 1 Ecu, 1643-52. Boy bust *r.* R Cwnd arms. Fine and sharp, some are bril. Desirable. 6
- 547 1667-1711. 4 Sols (2 var.), $\frac{1}{5}$ Ecu (2 var.), 10 Sols (3 var.). All with bust *r.* Good to unc., 1 holed. 7
- 548 1679 Ecu. Large bust. R Cwnd arms. *m.m. &.* Good. 6
- 549 1690 Ecu. Date on *obv.* R 8 L's form of cross. *m.m. x.* Fine. 6
- 550 1690 Ecu. Sim., larger bust. *m.m. l.* Very fine. 6
- 551 1694 Ecu. Bust in cuirass *r.* R Crowned circular shield, palms crossed. *m.m. a.* Fine. 6
- 552 1708 Ecu. Sim. R Type of 549. Fine. 6
- 553 1709 Ecu. Sim. R 3 crowns. *m.m. a.* Very fine. 6
- 554 Louis XV, 1716. Ecu. Boy bust *r.* R Round shld cwnd. Fine. 6
- 555 1718 Ecu for Navarre. A dif. bust *r.*, laur. R Arms of France and Navarre. Sharp, unc. 6
- 556 1719-20 XX Sols, as last, with value on *rev.*, mints G and R. 1723 $\frac{1}{2}$ Ecu. Bust *r.* *m.m. h.* Fine and sharp. 1729 $\frac{1}{2}$ do., bust *l.* *m.m. r.* Fair. 4
- 557 1724 Ecu. Bust *r.* R Sim. to 549. *m.m. a.* Fine, sharp. 4
- 558 1730 Ecu. Bust *l.* R Oval shld, branches. Fine, sharp. 4
- 559 1748 $\frac{2}{5}$ Ecu. Hd *l.* R As last. Very fine, sharp. 1756 Ecu. Same type. Good. 2
- 560 1763 Another Ecu, as last. Very fine. 2
- 561 Louis XIII. 5 Sols. Nap. III. 50 Ctms. Good. Mediaeval Deniers, Maguelone, Souvigny. Both fine. Also, 2 Rls. Ferd. and Is., Spain. Good. 5

GOLD COINS.

- 562 **Carthage**, B. C. 340-242. Persephone hd ζ . \Re Horse standing r .
Fine. Electrum. 18.
- 563 **Thrace**. Coson, B. C. 42. Stater. $\text{KO}\Xi\Omega\text{N}$. Brutus marching
 ζ bet. two lictors. \Re Eagle ζ holds wrth. Fine, sharp. 19.
- 564 **Macedonia**. Alex., the Great, B. C. 336-323. Stater. Pallas hd
 r . in crested helmet. \Re $\text{A}\Lambda\Xi\Xi\text{A}\text{N}\Delta\text{P}\text{O}(\text{Y})$. \Re Winged Nike ζ .
Ex. fine, rare.
- 565 **United States**. 1836 5 Dollars. Fine.
- 566 **England**. Hy VI, 1422-61. Noble. The King setd in ship. \Re
Cross potent within compartment of 8 arches. Trefoil coinage.
Ken., Class 4. V. good. 33.
- 567 Edw. IV, 1461-83. Ryal or Rose Noble. King setd as last, rose
on ship. \Re Rose on a sun, in tressure of 8 arches. Ken., Pl.
V, 36. Fine. 35.
- 568 Hy VII, 1485-1509. Angel, 2d coinage. Archangel Michael. \Re
Ship, upon which, a shld with arms surmounted by large cross.
Ken., Pl. VII, 51. V. good. 29.
- 569 Hy VIII, 1509-46. Angel, 3d coinage. Type as last. Ken., Pl.
IX, 62. Fine. 27.
- 570 Half Sovereign, 4th or 5th coinage (1544-5). The King setd on
throne. \Re Arms supt. Ken., Pl., IX, 65. A weak impression,
fair. 32.
- 571 Another, type as last (a variety). Good, but planchet cracked in
two places. 29.
- 572 Elizabeth, 1558-1602. Angel. Type of 568. Ken., Pl. XIII, 89.
Small pin hole, good. 29.
- 573 Victoria, 1887. Jubilee coinage. Half Sovereign. Fine.
- 574 1887 Sovereign. Fine.
- 575 1887 Double Sovereign. Fine.
- 576 1887 Five Pound Piece. Fine.
- 577 **France**. Chas. IX, 1568. Ecu. Cwnd arms. \Re Fleurs-de-lis
form cross. *m.m.* B. Fine. 23.
- 578 Louis XIII, 1642. $\frac{1}{2}$ Louis d'or. Head r ., date below. \Re 8 Ls
form cross. *m.m.* A. Fine, rare. 20.
- 579 Louis XIV, 1690. Louis d'or. Hd r . \Re Cwnd arms. *m.m.* 1.
Ex. fine. 24 $\frac{1}{2}$.

- 580 Louis XV, 1722. Louis d'or. Bust *r.* *Ex.* date. \Re Two Ls addorsed, cwnd. Fine, rare. 25.
- 581 Spain. Ferd. and Is., 1474-1504. Dbl Ducat. Busts vis-a-vis. Above, X, below, S(eville). \Re Crowned arms on eagle. Good. 27.
- 582 Another, sim. Cross? in place of X, a large pellet between faces. Same mint and weight. Good. 30.
- 583 4 Ducats, sim. An aqueduct above busts (Segovia *m.m.*), below, 4 | K. Weight equals the two preceding. Good. 35.
- 584 Ph. II, 1556-98. Rose Noble. Exact type of Mary's Ryal. Ken., Pl. XI, 79. PHS × DG × HISPANIAR × REX × A · O × TRANSISL × Lion on flag of ship. \Re CONCORDIA × RES × etc. Struck for Overysse (*Transisulania*). Fine and rare. 35.
- 585 Nuremburg. $\frac{1}{32}$, $\frac{1}{16}$ Gulden. Arms of the city. \Re Paschal lamb. Among the smallest coins known. Unc. $4\frac{1}{2}$ and $7\frac{1}{2}$. 2
- 586 Russia. Hd of Nicholas I, *r.* \Re Olive branch. Fine. 7. India. Leaf, native characters and date. Holed, good. $9\frac{1}{2}$. 2
- 587 Japan. 1846-68 Ni-shu, Itsi-bu and Ni-bu. Small percentage of gold. Oblongs, sq. corners, 7 x 12 to 12 x 19. Fine. 3
- 588 Prior to 1865. Oho-ban (large plate, 10 ryo). A circular stamp $14\frac{1}{2}$ *mm.* near edge, on 4 sides of an oblong 81 x 135, with rounded corners, each containing 3 leaves with flowers above (crest of the Mikado). The signature of the mint or treasury official, in India ink, testifying to genuineness, extends the entire length of the piece. \Re 6 small stamps. Perfect. Gold value about \$75.00.
- 589 Ko-ban (small plate, 1 ryo). Leaves as last, in fan-shape compartment at either end, var. other stamps, *obv.* and *rev.* Fine. 30 x 57.
- 590 Itsi-bu (one part, $\frac{1}{4}$ ryo). Fine. 20 x 36.

MEDALS.

- 591 Am. Colonial. Geo. I, 1714-27. \Re Indian shooting stag. See Betts 161-7. A medal given to Indians. Poor and corroded. 40. Geo. II, 1757. Man offers pipe of peace to Indian, both setd. Fine, light olive. Both \mathcal{A} . 44. 2
- 592 Kittanning destroyed, etc. *Ex.* Sept. 8. | 1756. The town in flames. \Re The gift of the corporation of — Phila. Arms. Betts 400. Fine, holed. Rare. \mathcal{A} 45.
- 593 Gvliemvs Pitt. Bust *l.* \Re The man | etc. Betts 515. Fine. \mathcal{A} 41.

594 I

595 V

596 I

597 J

598 G

599 A

600 A

The
have bee

601 E

602 1

603 1

604 C

605 S

606 F

- 594 Franklin. Bust *r.* \mathcal{R} Beaver gnawing tree. *Ex.* 1776. Also, with *rev.* eagle, lightning in his talons, hovers over part of sphere. Betts 546, 621. Fine. \mathcal{A} 40. 2
- 595 Washington and Franklin. Busts jugate *l.*, with *revers.* as last. Betts 549, 617. Fine. \mathcal{A} 40. 2
- 596 Libertas Americana. Hd of Lib. *l.* 4 Jul. 1776. \mathcal{R} Contest of infant Hercules, Minerva and lion. Betts 615. Fine, rare. \mathcal{A} 47.
- 597 JAMES MONROE, Pres., etc. 1817. Bust *r.* \mathcal{R} Peace | and | Friendship. Two right hands joined. Tomahawk and pipe crossed, above. Pierced, with ring. Indian Peace Medal. *Ex.* rare, good. \mathcal{R} 50.
- 598 GEORGE WASHINGTON. Bust *l.*, stamped on *obv.* of 1824 $\frac{1}{2}$ Dol. \mathcal{R} GENERAL LA FAYETTE — 1824. Hd *r.*, size 14 *mlm.* Pierced for suspension. Also the same on a U. S. Cent. Fine and rare souvenirs of La Fayette's last visit to the U. S. 2
- 599 ANDREW JACKSON, Pres., etc. 1829. Type of 597. Pierced, with ring. A good and extremely rare Indian medal. \mathcal{R} 76.
- 600 ANDREW JOHNSON, etc. 1865. Bust *r.* \mathcal{R} Columbia joining hands with Indian chief. Good, *ex. rare.* 76.
- The preceding is accompanied by a buckskin thong and pouch, and is stated to have been found upon the neck of a dead chief at the Custer massacre.
- 601 England. 1588 VENIT · IVIT · FVIT. Two ships in combat. \mathcal{R} Zealand shld cwnd. M. I., Vol. I, 146/113. Commemorates defeat of Span. Armada. Fine. \mathcal{R} 31 $\frac{1}{2}$.
- 602 1706 Lvdovicvs Magnvs Anna Major. Minerva holds warrior down. \mathcal{R} 12 shlds. Edge ins. In honor of Anne's victories over Louis XIV. M. I., Vol. II, 288/97. Pfct, v. rare. \mathcal{R} 43.
- 603 1834 England. I revere, etc. Negro stdg. Colonial slavery abolished. Prince of Wales hd *l.* \mathcal{R} Colonial | and Indian | Exhibition | London | 1886. Both fine. 52. 2
- 604 Calendars, 1759, '75 and '91. Birm. make, brass. Also medalets, Geo. and Char., Victoria, etc., and Chron. of Kings, in WM. Good to fine. 7
- 605 Scotland. Comn. Tokens. Greenock, 1843; Dundee, 1865; also a restrike of the medal commemorating the massacre of St. Bartholomew, 1572. Fine. \mathcal{A} 30. 3
- 606 France. 1661 Jules, Cardinal Mazarin. (Mortuary.) Bust *l.*, by *Dassier*. \mathcal{R} France reclining at foot of monument on which a tablet with memorial ins., Premier, etc. in 4 lines. Fine. \mathcal{R} 28.

- 607 Louis XV, 1753. Dum ad proelia surgat. A courser resting *l.* 1757 Discite justitiam. Jupiter on cloud, striking enemies below. *Obs.* have dif. bust, and from same dies used on Canadian Jetons, 1751-58. Fine. *Æ* 28. 2
- 608 Treaty of Utrecht (1713). Pallas stdg *l.*, spear in *r.* hand, shld in *l.*, upon which a cat (emblem of liberty), lion within enclosure at *l.* holds pole, surmounted with hat. *R̄* Ins. in 19 lines. Distributed by the municipality of Amsterdam among members of the Council, 1713-14. Van Loon, p. 248. Fine, rare. *Æ* 71.
- 609 1760 CVRA DEI PATRVMQVE PATRIAE. Female setd amid emblems of commerce, behind her, a land and naval conflict. *R̄* ADDIC- TIBVS, etc. — INITIO ANNI | MDCCLX. Dove flying *l.* beneath cloud, river below. New Year's Medal, with wishes for peace bet. Austria and Prussia, France and England. Van Loon, Sup. 356. Fine, rare. *Æ* 44.
- 610 Agricultural Soc'y, New South Wales. Prize medal. Female figure, stdg facing, with torch and wreath, shepherd and flock at left, two naked boys at right, one with sickle, typifying the colony and its products; all on a monumental base, panelled with emblems of art and agriculture, *Hardy Brothers*, etc. small, below. *R̄* PRACTICE WITH SCIENCE. Within wrth J. L. Rawbone | Toronto. O. | Guns. | Sydney. N. S. W. | 1877 (engraved). Fine. *Æ* 90.
- 611 Miscellaneous medalets, etc., of small acct. 4 holed, 2 duplicates. Includes a fine Jubilee 1887 Shilling. 12

BOOKS.

- 612 Canadian Antiquarian, Vols. I to XII, in half calf; Vol. XIII unbound. 1872 to 1886. New series, Vols. I and II, 1889-92, also unbound. A fine set. Sold as 15 volumes.
- 613 McLachlan, R. W. Canadian Communion Tokens, Montreal, 1891. 64 pp., 8vo, paper.
- 614 LeRoux, M. D., Jos. Numismatic Atlas for Canada, with plates, 35 pp., Montreal, 1885. Zay, E. Canada, La Monnaie de Carte; Médailles d'Honneur pour les Indiens. Each 8 pp. Also 22d and 23d Annual Report Am. Num. and Arch. Soc. Paper. 5
- 615 — The Canadian Coin Cabinet. Fully illustrated in the text, one of 24 copies, printed on heavy paper, numerous pencil marks and checks. Mont., 1888. Royal 8vo, cloth, with unbound supplement, 1890. 2

616 A

617 -

Bids

618 F

619 F

**

- 616 American Journal of Numismatics, Vols. I to X, bound in 3 vols. (2 in fine $\frac{1}{2}$ morocco), XI to XXVIII, unbound, 1866 to 1894, complete. Sold as 28 volumes. Very desirable.
- 617 — Vols. I to III, bound in half roan, contains plate of 1793 Cents with representations of 21 *obvs.* or *revs.* (including the strawberry var.) with their combinations. Also photo. of first Mint, Phila. Several scarce circulars inserted. Sold as 1 volume.
- Bids will be accepted for one or more copies of the two following numbers.
- 618 Breton, P. N. Illustrated History of Coins and Tokens relating to Canada. Royal 8vo, paper, 240 pp. Montreal, 1894. Fully illustrated. Portraits of Breton, LeRoux, McLachlan and others, with biographical sketches. Published at \$2.00. 25 copies.
- 619 Frossard-Hays. Varieties of United States Cents of the year 1794, described and illustrated, 18 pp., 2 plates, small folio, cloth. N. Y., 1893. 25 copies.

*** See next page for abbreviations and authorities.



ting 7.
 es be-
 Cana-
 2
 shld in
 closure
 Dis-
 bers of
 R 71.
 mbles
 DIC
 beneath
 peace
 n, Sup.
 ale fig-
 lock at
 colony
 ith em-
 below.
 oronto.
 Æ 90.
 plicates.
 12
 III un-
 92, also
 l, 1891.
 plates,
 naie de
 8 pp.
 ch. Soc.
 5
 ext, one
 rks and
 supple-
 2

ABBREVIATIONS USED.

Al.	Aluminum.	gd.	good.	R ³ , R ⁴ ,	} represents } degree of rarity.
abt.	about.	gt.	great.	etc.	
Æ	Copper.	hd.	head.	R	} Reverse.
Ɱ	Silver.	bds.	heads.	Rev.	
asst.	assortment.	ins.	inscription.	Res.	} Restrike.
A	Gold.	l.	left.	Rls.	
bet.	between.	laur.	laureated.	S. B.	} Small bronze.
Bk.	Bank.	leg.	legend.	sep.	
bril.	brilliant.	Lib.	Liberty.	} separate. } separating.	
Br.	} bronze.	march'g.	marching.		setd.
Bz.		M. B.	Middle bronze.	std.	} seated.
Bzd.	bronzed.	mil.	military.	Sh.	
C.	Cent.	m.m.	mint marks.	Shil.	} Shilling.
Ctms.	Centimes.	mm.	millimeters.	shld.	
Cts.	Cents.	mon.	monogram.	sim.	} similar.
Cwn.	crowd.	mntd.	mounted.	sm.	
cwnd.	crowned.	N.	Nickel.	sq.	} square.
d.	pence.	n.d.	no date.	stdg.	
dbl.	double.	Nos.	numbers.	stndg.	} standing.
Dcms.	Decimes.	O.	} Obverse.	sup.	
dif.	different.	Obv.		orig.	sup.
do.	ditto.	orig.	original.	Test.	} support. } supported.
Dol.	Dollar.	p.	page.	Tetr.	
dup.	duplicate.	pc.	piece.	unc.	} Tetradrachm.
dups.	duplicates.	pcs.	pieces.	v.	
Ed.	Edition.	pf.	proof.	var.	} variety.
ex.	extra.	Pfct.	Perfect.	vars.	
Ex.	Exergue.	pl.	plate.	WM.	} varieties. } White metal.
G. B.	Grand or large bz.	ptd.	pointed.	wrth.	
		r.	right.	yr.	} wreath. } year.

AUTHORITIES QUOTED.

- B. Breton, P. N. Illus. Hist. of Coins and Tokens relating to Canada.
 Betts. [C. W.] Amer. Colonial History Illustrated by Contemporary Medals.
 F. Fonrobert Catalogue.
 Hawk. Hawkins. Silver Coins of England.
 Ken. Kenyon. Gold Coins of England.
 L. LeRoux, M. D., Jos. The Canadian Coin Cabinet.
 McL. McLachlan, R. W. Canadian Numismatics.
 P. Poole, R. S. Catalogue of Greek Coins (Sicily).



322



211



340



371



289



99



114



199



303



29



101



291



186



405



4



224



177



213



24



435



141



365



224



228



112



177



178



213



212



42

156



227



240

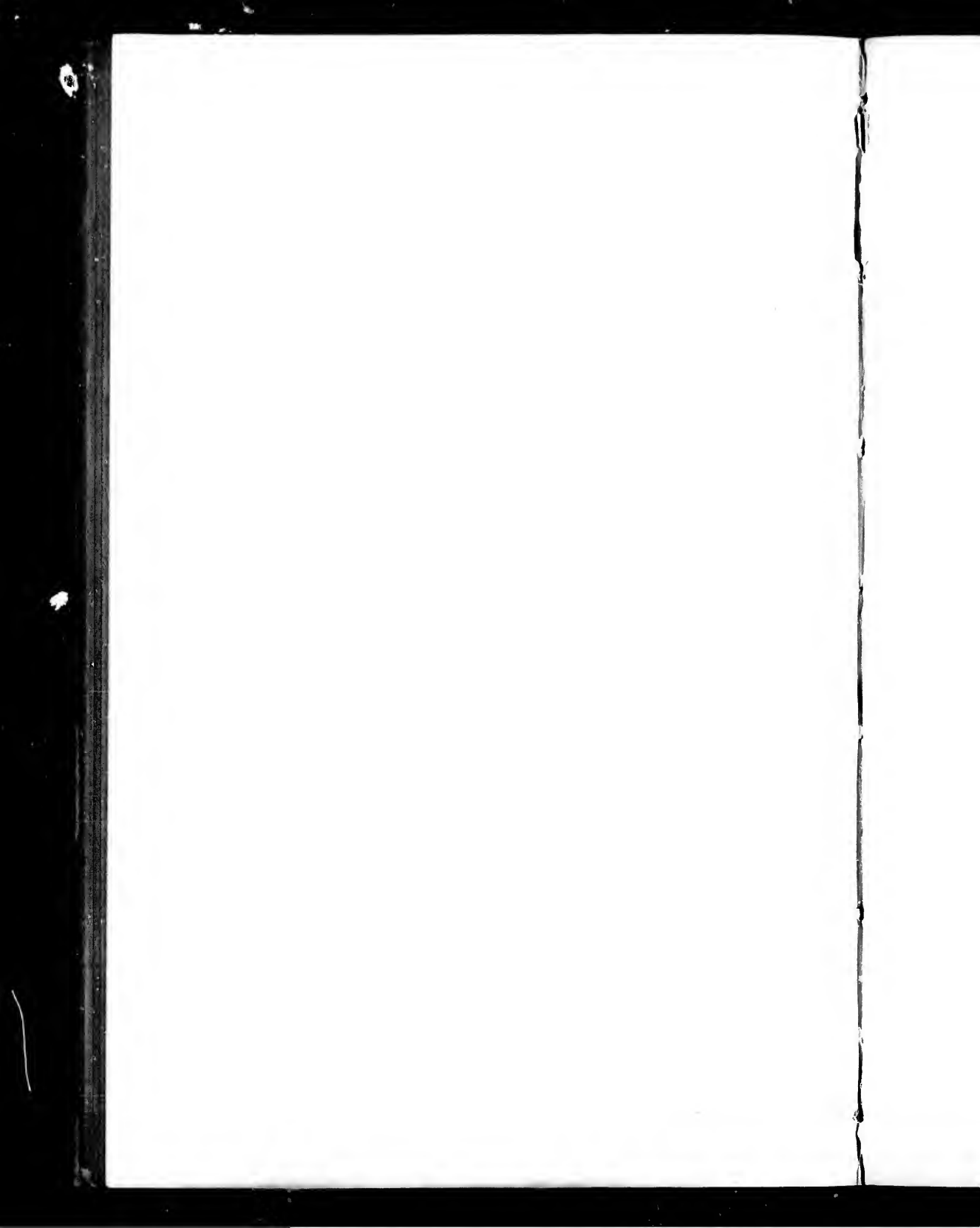


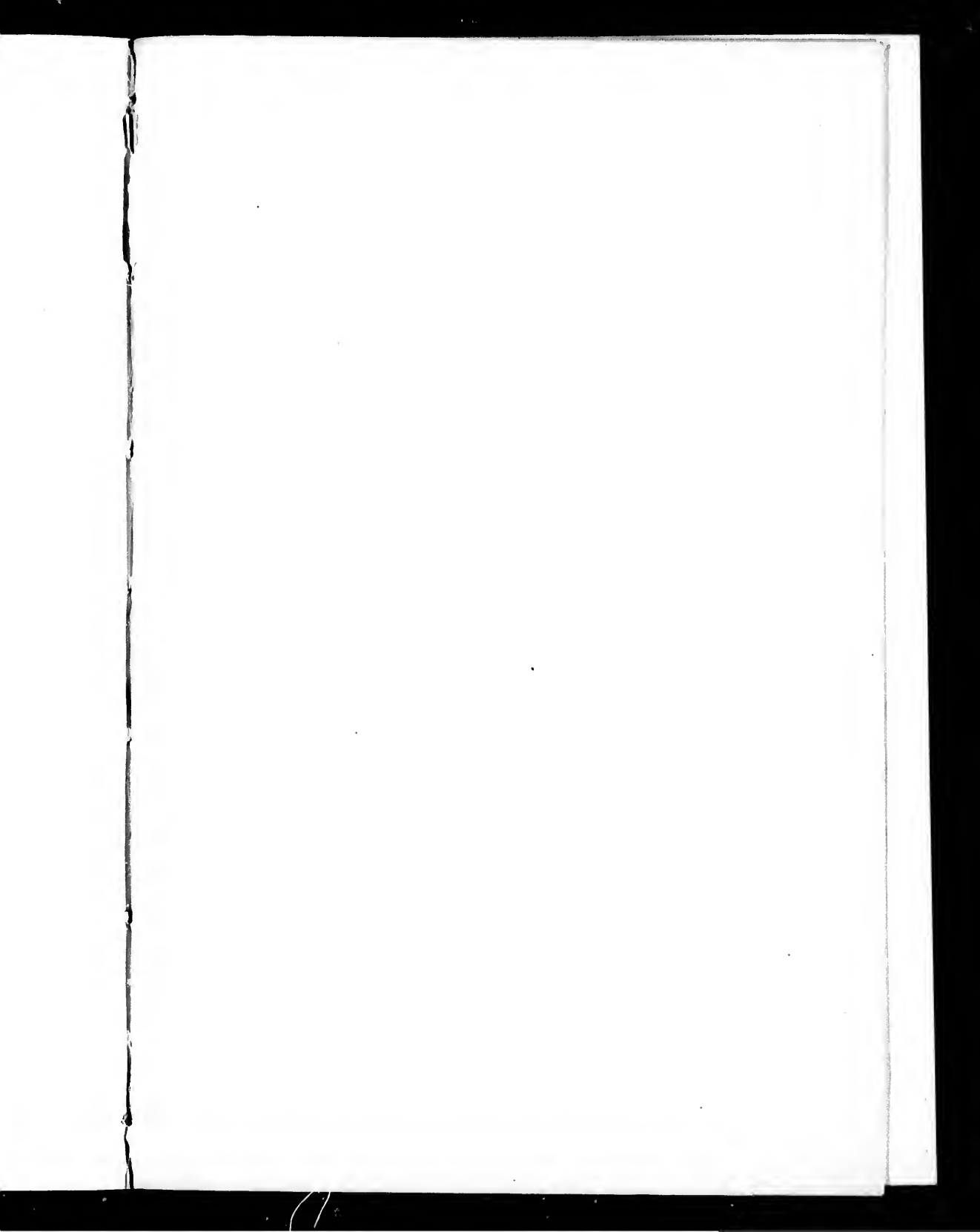
207



65









Rev. of Lot 122.



