

DIAMOND HALL

CUT GLASS



118 to 124  
YONGE ST  
TORONTO

**RYRIE BROS**

JEWELLERS  
AND  
SILVERSMITHS

Vol. 16, cat. 16.

RYRIE BROS.  
 220 KING ST. W. TORONTO

Date

INTRODUCTORY

Please forward to M

County

for which find enclosed

QTY	PRICE	TOTAL	REMARKS

RYRIE BROS.

Ordered by M

# RYRIE BROS.,

COR. YONGE AND ADELAIDE STREETS,  
TORONTO.

Date.....190...

Please forward to M.....

County.....

For which find enclosed.....

PAGE IN CATALOGUE.	NO. OF ARTICLE.	QUANTITY.	ARTICLE.	REMARKS.	PRICE.

Ordered by M.....

## INTRODUCTORY.

---

••**D**URING recent years so great has been the progress in the cutting of glass that such products may justly claim a place among the "Fine Arts." For Wedding Gifts especially, these articles are in very great demand by persons of cultivated taste, and we have pleasure, therefore, in submitting herewith a few selections from our Art Rooms which may, we trust, prove of interest to you.

**RYRIE BROS.,**  
JEWELERS,  
TORONTO.

## HOW TO ORDER.

Please do not cut this Catalogue. Simply fill in the order blank with the number of the article wanted and the page upon which it appears.

Give full name and post office.

## TERMS.

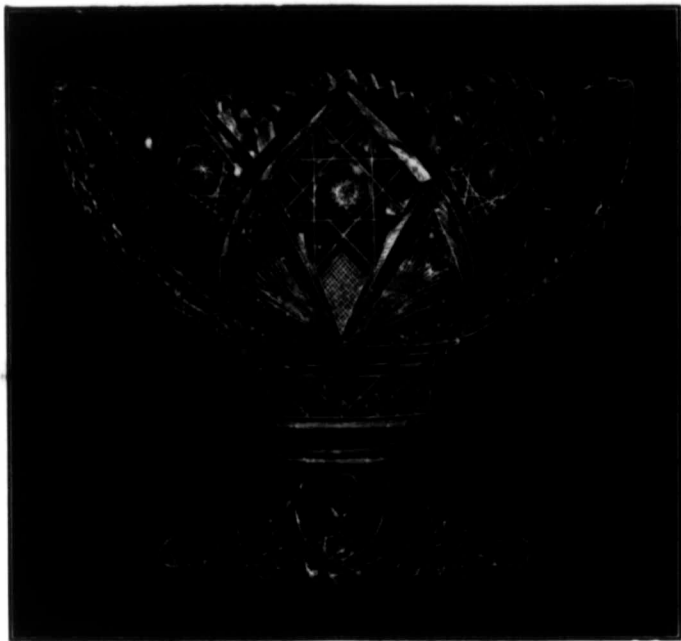
The prices quoted are net cash and money must accompany the order unless you already have a satisfactory monthly account with us.

## REMITTANCES.

Remittances may be sent by express, post office order, postal notes, bank drafts or cash. If in cash, however, we cannot assume responsibility unless sent by registered mail.

## DELIVERY.

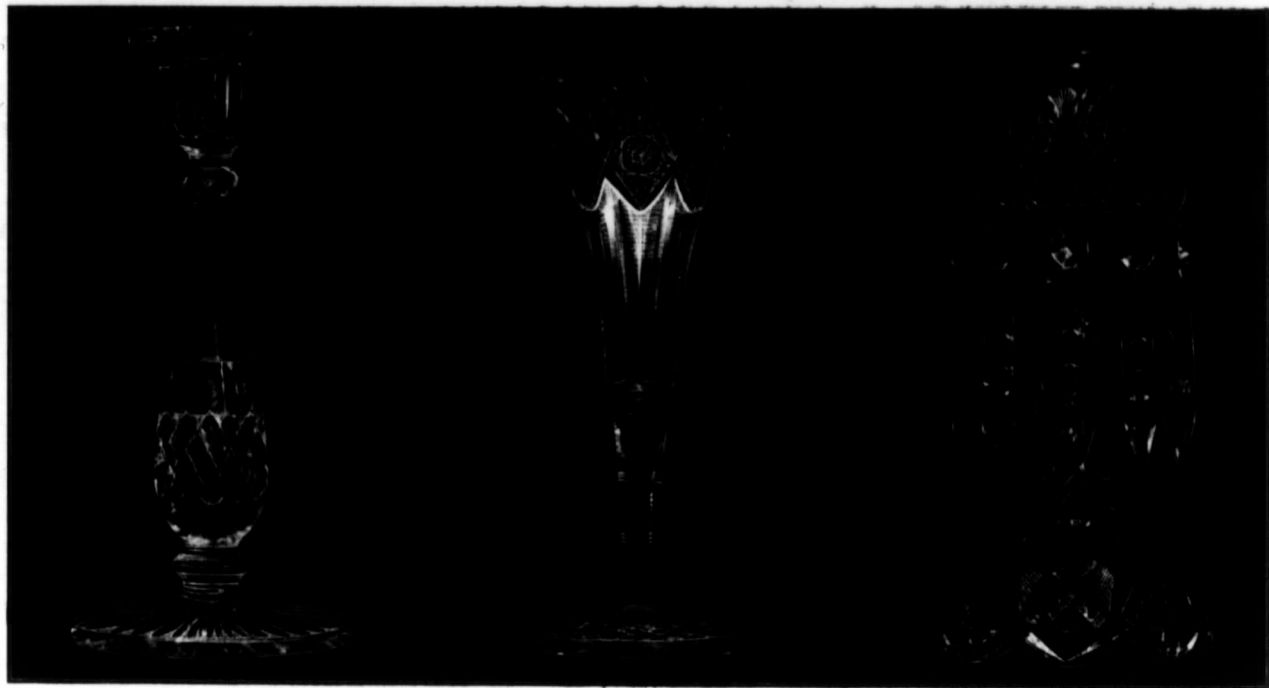
We prepay all charges for delivery upon orders from this Catalogue.



No. 3200—Punch Bowl, 12 inches diameter Holland Pattern,  
\$57.00



No. 3201—Decanter Tantalus Set, 15 inches high, Fine Silver Plated Mounting,  
Mahogany Base, Brunswick Pattern \$65.00



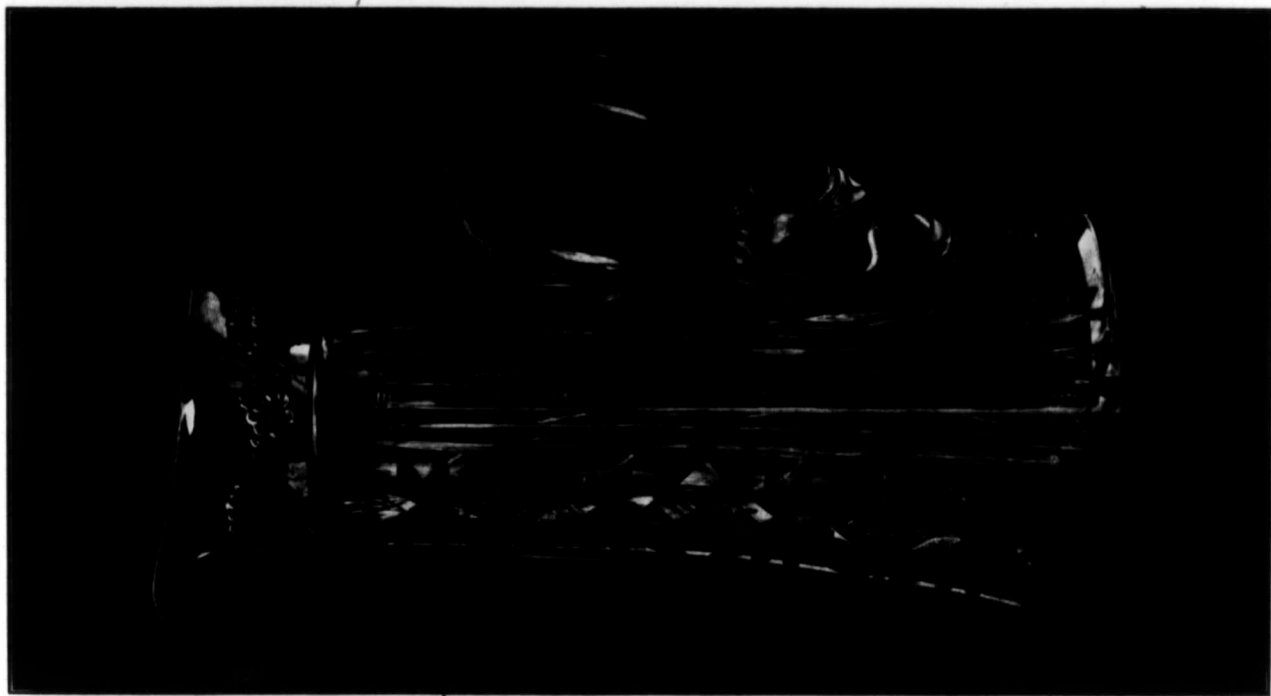
No. 3202—Candlestick, 9 $\frac{1}{2}$  inches high, Majestic Pattern,  
\$9.00 each.

No. 3203—Flower Vase, 8 inches high,  
Brunswick Pattern, \$4.50.

No. 3205—Candlestick, 9 $\frac{1}{2}$  inches high, Brazilian Pattern,  
\$18.00 each.

No. 3204—Flower Vase, 10 inches high, Brunswick Pattern, \$5.00





Never Cut this Catalogue—We Need only the Numbers

No. 3208—Claret Jug, capacity 1 quart, New London Pattern, Sterling Silver Mounting. \$15.00

RYRIE BROS., TORONTO.



No. 3207—Oil, 6 inches high, Aberdeen Pattern, \$3.00

## RINGS.

---

We carry a particularly fine line of all the favorite styles of Diamond Rings.

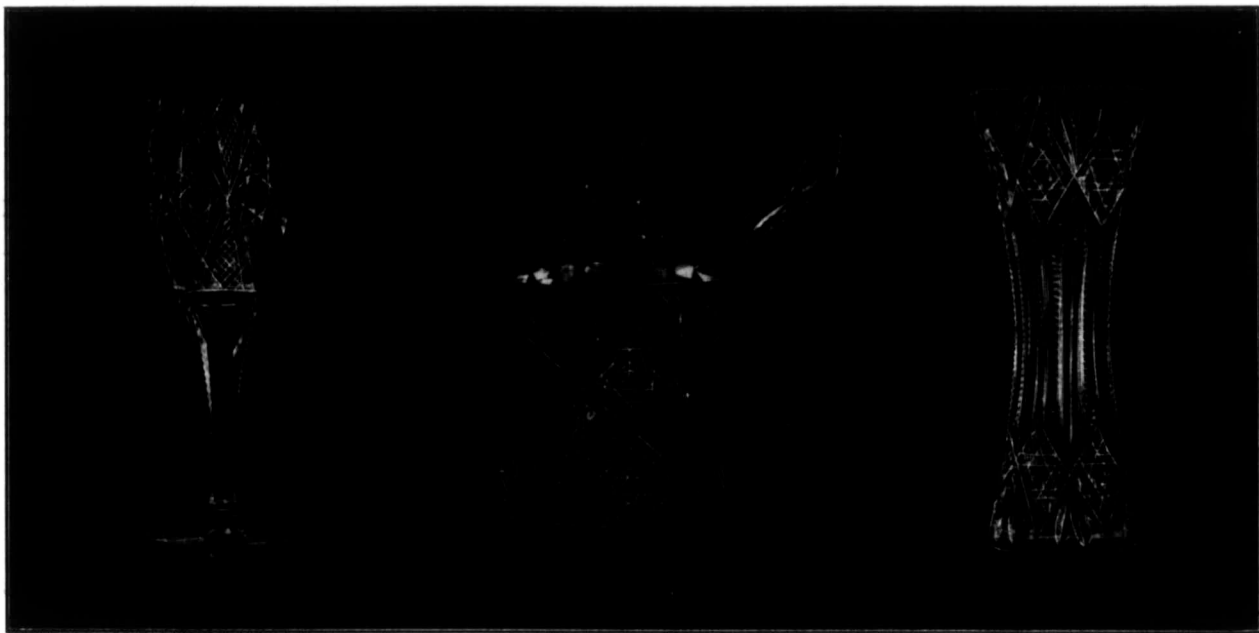
The values we offer are made possible, only by personal selection from the cutters in Amsterdam.

Money returned in full on mail orders if our selection is not approved of.



No. 3208—Oil, 6 inches high, Gladys Pattern, \$4.00

Never Cut this Catalogue—We Need only the Numbers.



No. 3209—Bud Vase, 4½ inches high, Imperial Pattern,  
\$2.50

No. 3210—Horse Radish Holder, 3¼ inches high, Holland,  
Pattern, \$6.00  
No. 3211—Sterling Silver Spoon, \$1.00

No. 3212—Bud Vase, 4½ inches high, Empire  
Pattern, \$3.25

**RYRIE BROS., TORONTO.**

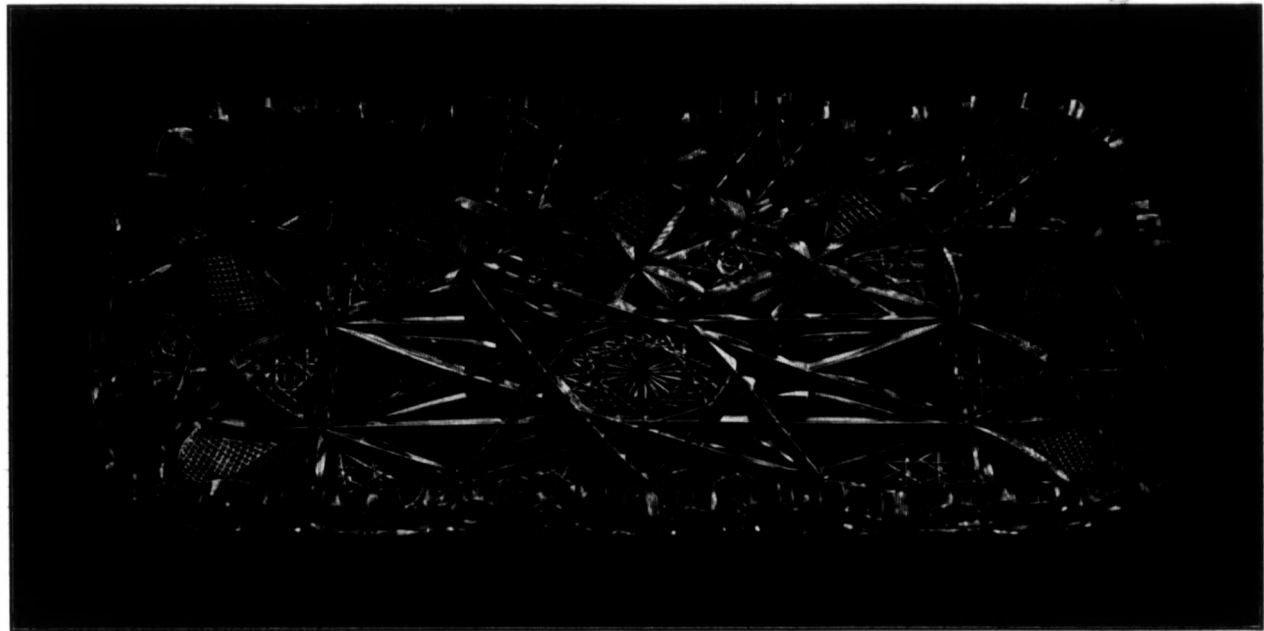


No. 3213—Celery Dish, 12 inches long. Grenada Pattern. \$6.00

**Never Cut this Catalogue—We Need only the Numbers.**

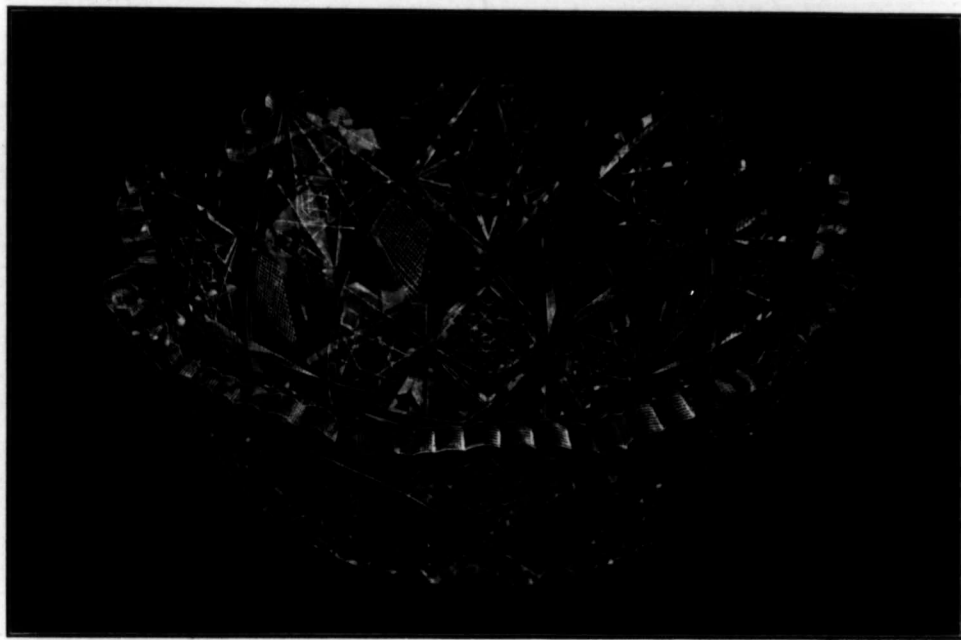
RYRIE BROS., TORONTO.

9



No. 3214—Celery Dish, 12 inches long, Portland Pattern, \$6.50  
**Pure as Crystal. Brilliant as a Diamond.**

**RYRIE BROS., TORONTO.**



No. 3215—Bowl, 9½ inches diameter, Flaring Pattern, \$12.00

**SEND US YOUR  
LITTLE  
REPAIRS.**

Repairs are with us a means to an end. The end we desire is to be "your family jeweler." No matter where you live in Canada we can serve you with thorough satisfaction. We are doing so in hundreds of cases as far west as the Pacific.

**RYRIE BROS.,  
JEWELERS,  
TORONTO.**

**WRIT**

O  
enable  
our m  
throug  
West  
newest

D  
W  
S  
S  
T  
funded  
it.

**RYRIE BROS., TORONTO.**

11

**WRITE US.**

Our mail facilities enable us to supply our many customers throughout the North-West with all that is newest and best in

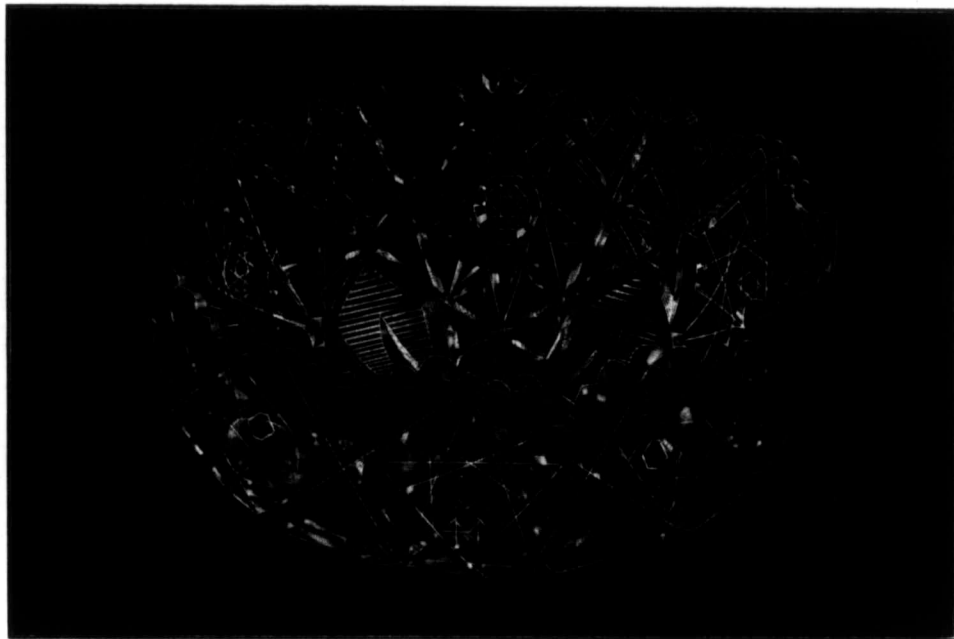
**DIAMONDS,  
WATCHES and  
STERLING  
SILVERWARE.**

Try us. Money refunded in full if you wish it.

**RYRIE BROS.,  
JEWELERS,  
TORONTO.**



No. 3216—Bowl, 9 inches diameter, Roman Pattern, \$25.00

**RYRIE BROS., TORONTO.**

No. 3217—Bowl, 8 inches diameter, Empire Pattern, \$9.00

No. 3218—Bowl, 10 inches diameter, Empire Pattern, \$14.00

We furnish special designs and estimates for

**MEDALS,  
CUPS,**

and all goods suitable for sporting or presentation purposes.

**RYRIE BROS.,  
JEWELERS,  
TORONTO.**

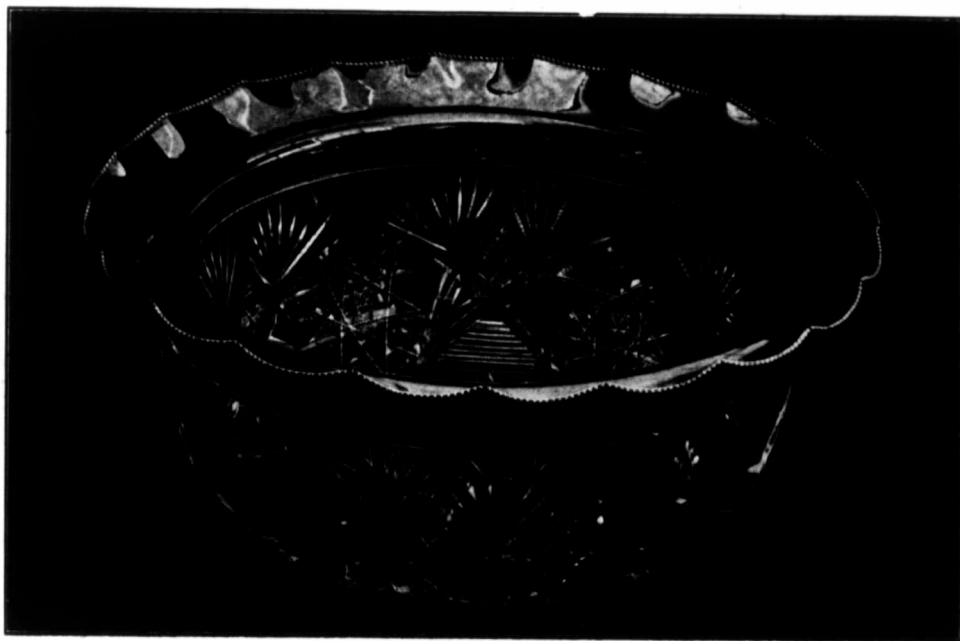


## WATCH REPAIRING.

Our Watch Repair Department is equipped with all modern machinery and a staff of skilled mechanics.

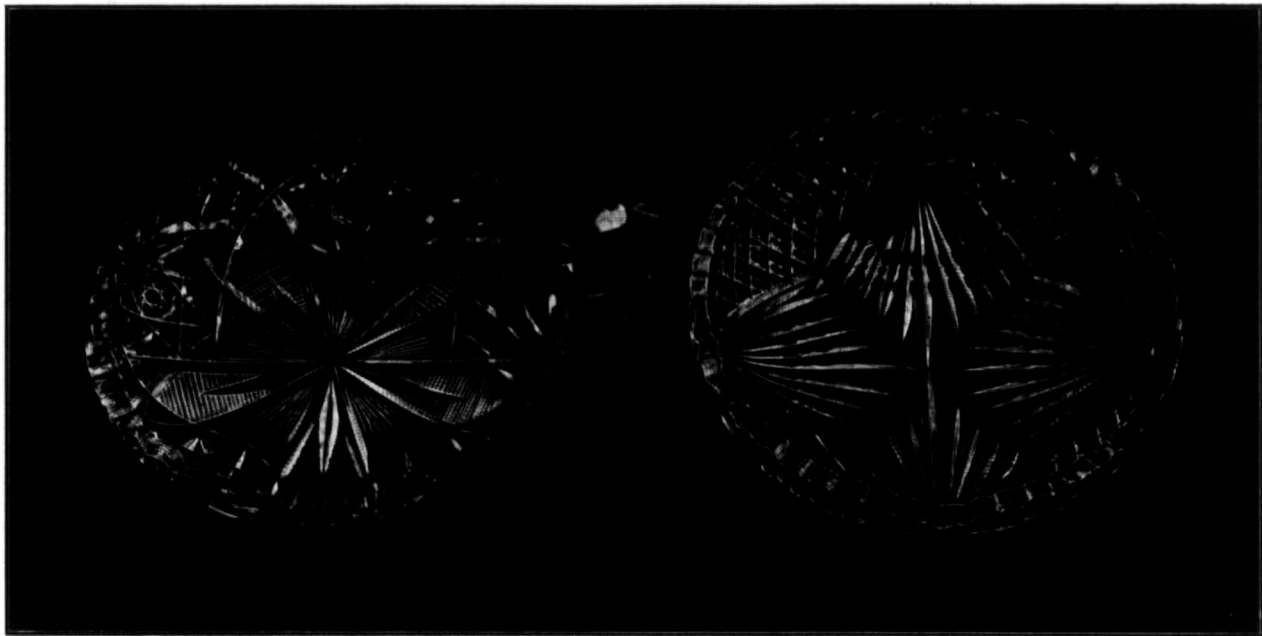
To customers living out of the city we send upon application a wooden box, in which a watch can be packed and sent by registered mail with perfect safety. Allow about a week for ordinary repairs and regulating. We prepay all charges on the return of repairs.

**RYRIE BROS.,  
JEWELERS,  
TORONTO.**



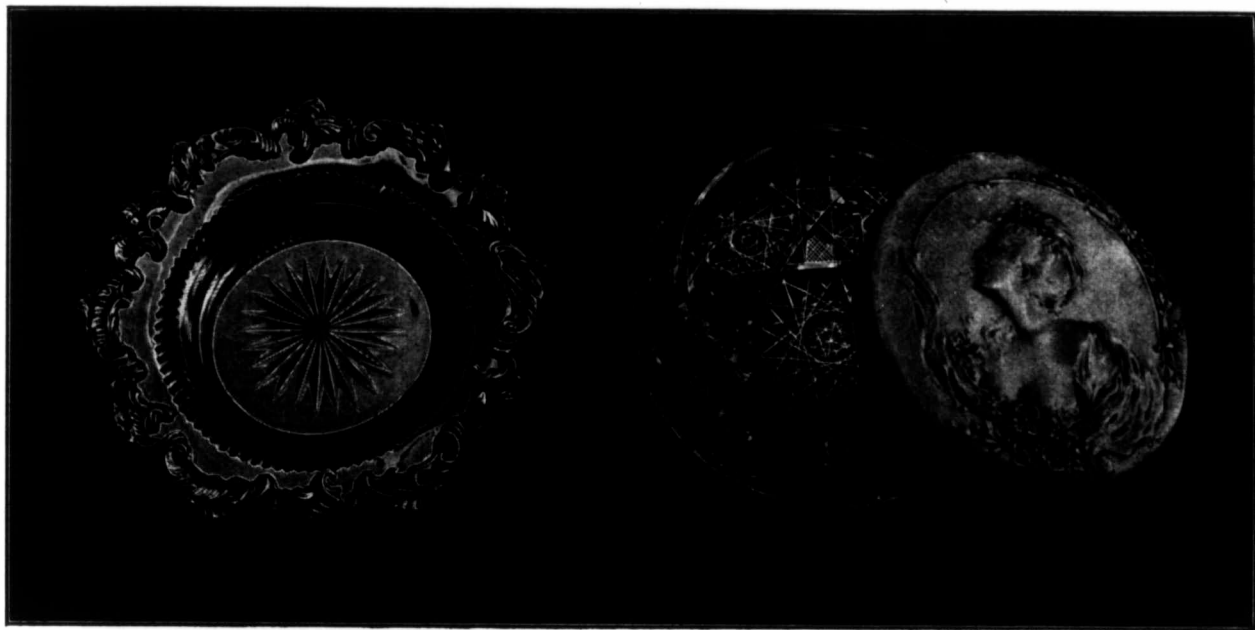
No. 3219—Bowl, 7 inches diameter (inside measurement), Sterling Silver Bead Mounting, Imperial Pattern, \$18.00  
No. 3220—Bowl same as above, only 8 inches diameter, \$25.00

## RYRIE BROS., TORONTO.



No. 3221—Nappy, 5 inches diameter, Empire Pattern, \$3.00  
No. 3222—Nappy, 6 inches diameter, Empire Pattern, \$3.50

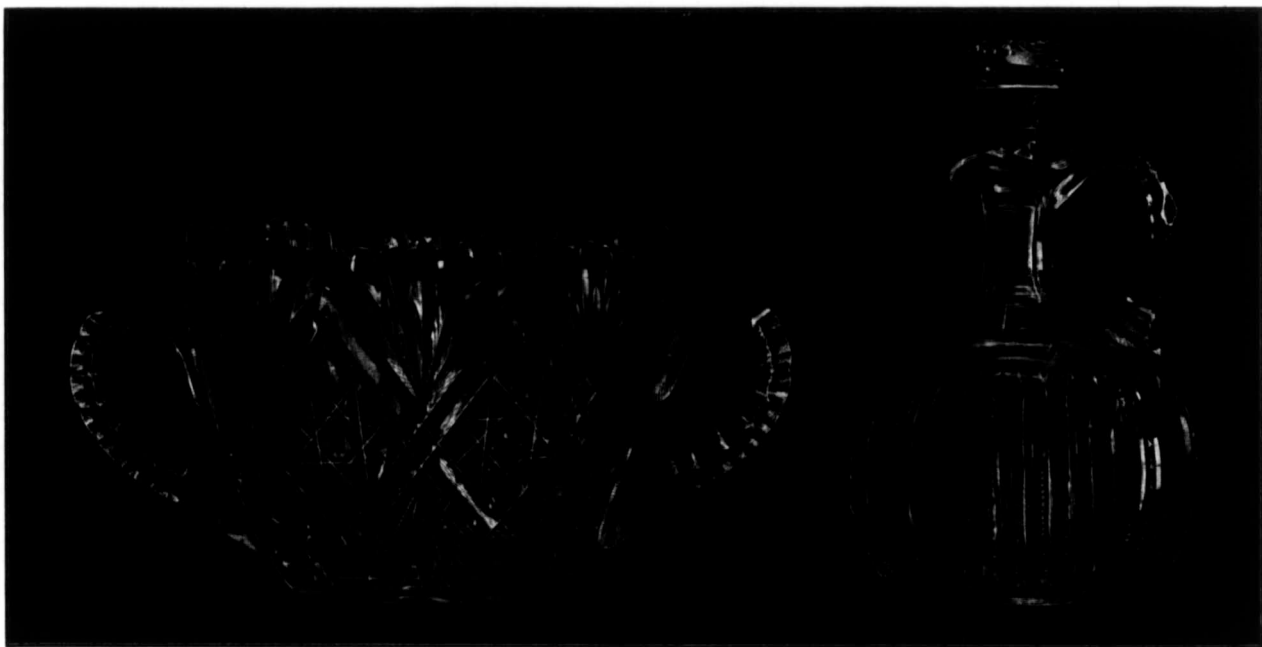
No. 3223—Nappy, 5 inches diameter, Grenada Pattern, \$2.00  
No. 3224—Nappy, 6 inches diameter, Grenada Pattern, \$2.50



No. 3225—Sterling Silver. Butter Dish, with Cut Glass Lining,  
6 inches diameter, \$10.00

No. 3226—Candy Box, 5½ inches diameter, Sterling Silver Top,  
Chrysanthemum Pattern, \$15.00

## RYRIE BROS., TORONTO.



No. 3227—Ice Bowl, 6½ inches diameter, Cyprus Pattern, \$12.00

No. 3228—Whiskey Decanter, capacity 1 quart, Sterling Silver Mounted Stopper, \$15.00

RYRIE BROS., TORONTO.

17



No. 3229—Rose Jar, 6 Inches diameter, Brazilian Pattern \$14.00

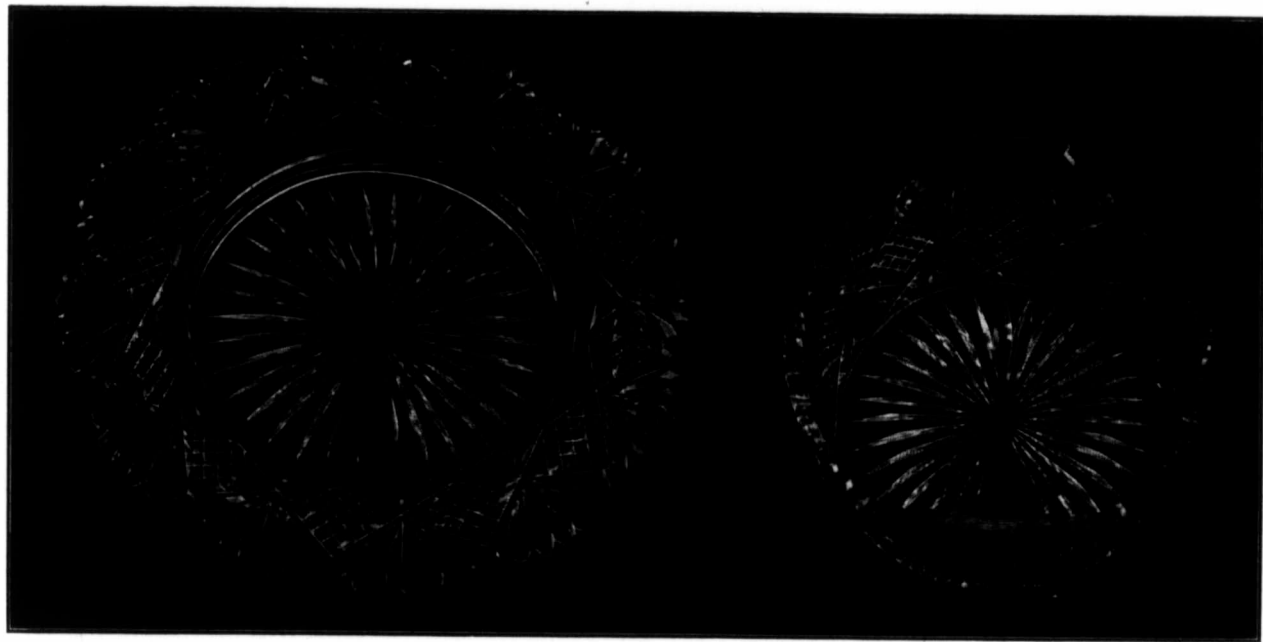
No. 3230—Yacht Decanter, capacity 1 quart, Fluted Pattern, \$12.00

\$15.00



No. 3231—Lemonade Jug, capacity 6 half pints, Brunswick Pattern, \$16.00

No. 3282—Water Bottle, capacity 1 quart, Aberdeen Pattern, \$5.01



No. 3233—Plate, 7 inches diameter, Devonshire Pattern, \$4.00

No. 3234—Butter Tub, 4 1/2 inches diameter, Devonshire Pattern, \$8.00

No. 3235—Plate and Butter Tub, Complete, Devonshire Pattern, \$12.00

RYRIE BROS., TORONTO.



No. 3236—Spoon Holder, 7 inches long, Gladys Pattern, \$6.00

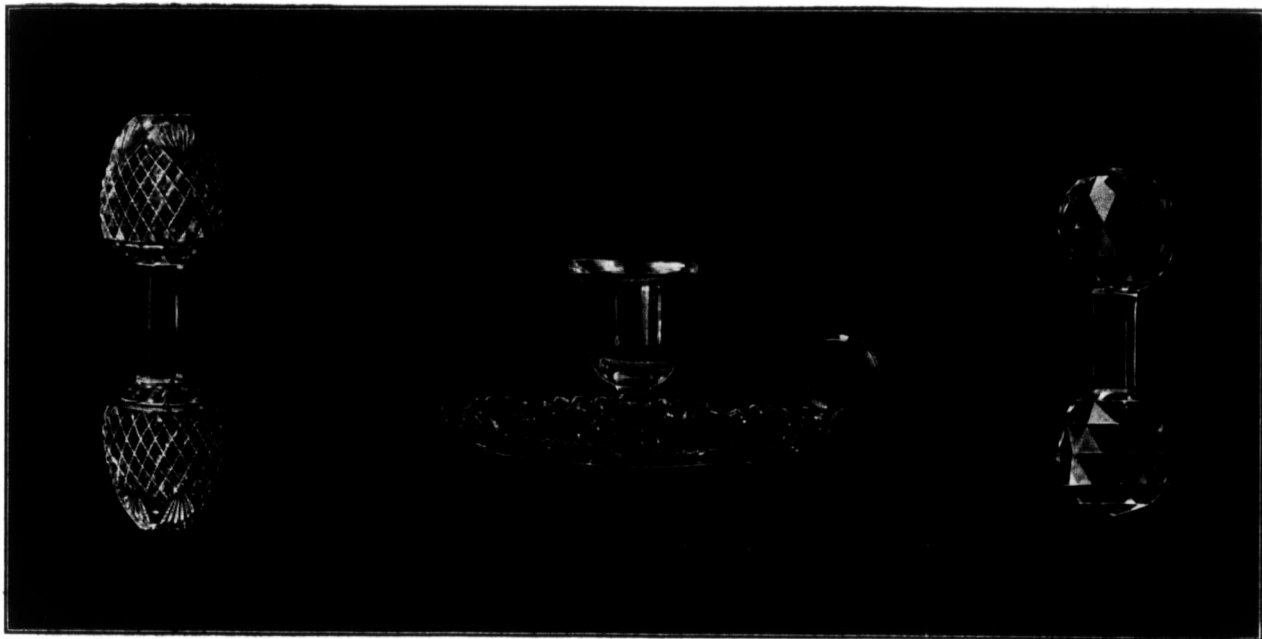
No. 3237—Olive Dish, 8 inches long, Devonshire Pattern, \$4.50

## WEDDING REQUISITES.

During the months of May and June our attention is directed chiefly to the supply of Wedding Accessories. These include Wedding Rings, Wedding Invitations of the very newest forms, Bridesmaids' Favors, Gifts for the Groomsmen and Bridal Gifts—every imaginable idea for the Table, Toilet and Person.

**RYRIE BROS.,  
JEWELERS,  
TORONTO.**

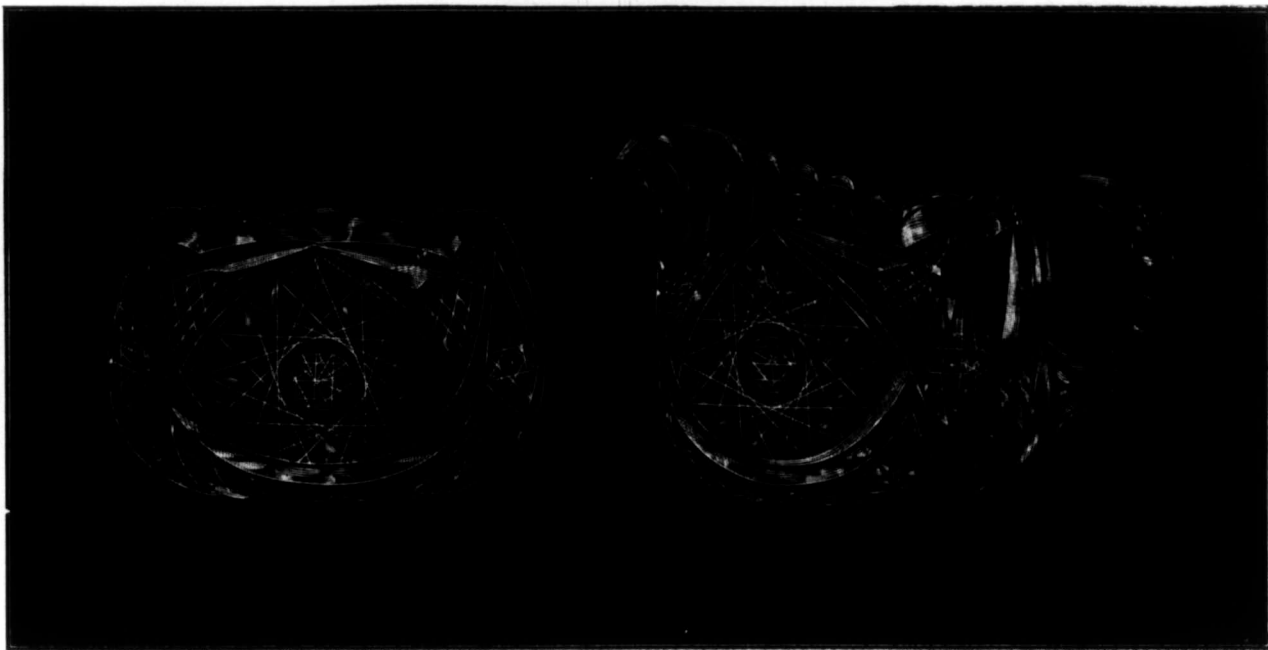




No. 3238—Knife Rest, 6 inches long, Devonshire Pattern,  
\$12 per pair or \$6.00 each.

No. 3239—Bedroom Candlestick, 5 $\frac{1}{4}$  inches diameter,  
Cambridge Pattern, \$6.50

No. 3240—Knife Rest, 5 inches long, Norwood Pattern  
\$6.00 per pair or \$3.00 each.



No. 3241—Sugar Bowl, 4 inches diameter, Argyle Pattern, \$5.00

No. 3242—Cream Jug, 3½ inches diameter, Argyle Pattern, \$5.00

### CARE OF CUT GLASS.

---

Frequent inquiries have led us to print these few hints regarding the proper care of Cut Glass. They are all extremely simple and yet adherence to them will make the glassware look better and last longer.

Tepid water, the best castile or ivory soap and a stiff brush are the first essentials. After washing and rinsing, place the glass in warm sawdust which absorbs the moisture in the cuttings. Next remove the sawdust with a stiff brush and wipe the plain surface thoroughly with a soft linen cloth. By following these directions the original clearness and sparkle of the glass will be maintained.

Do not use shot in cleaning carafes, toilet bottles, cruets and similar articles. It is apt to scratch the glass and thus mar its beauty. Good old fashioned potato peelings are the best aids. Let them remain in the glassware over night and then rinse out with tepid water.

A very important point is to avoid sudden changes from extreme heat to extreme cold and vice versa. A pitcher or tumbler which has been filled with ice water, a tray which has been used

## RYRIE BROS., TORONTO.

for ice cream, if plunged at once into hot water is very apt to crack. The reason is obvious. Cold contracts and heat expands. The glassware which has been cooled has contracted and if plunged into hot water expands more rapidly than the cohesion of the particles will permit. Use lukewarm water and risk of breakage is avoided.

The sudden change from heat to cold is just as dangerous, therefore do not remove cut glass from a close cabinet, where it has become heated, and bring it immediately into contact with a cold substance. Cool the glass for a time in tepid water before subjecting it to the extreme temperature.



# RYRIE BROS.,

COR. YONGE AND ADELAIDE STREETS,  
TORONTO.

Date..... 190....

Please forward to M.....

County.....

For which find enclosed.....

PAGE IN CATALOGUE.	NO. OF ARTICLE.	QUANTITY.	ARTICLE.	REMARKS.	PRICE.

Ordered by M.....

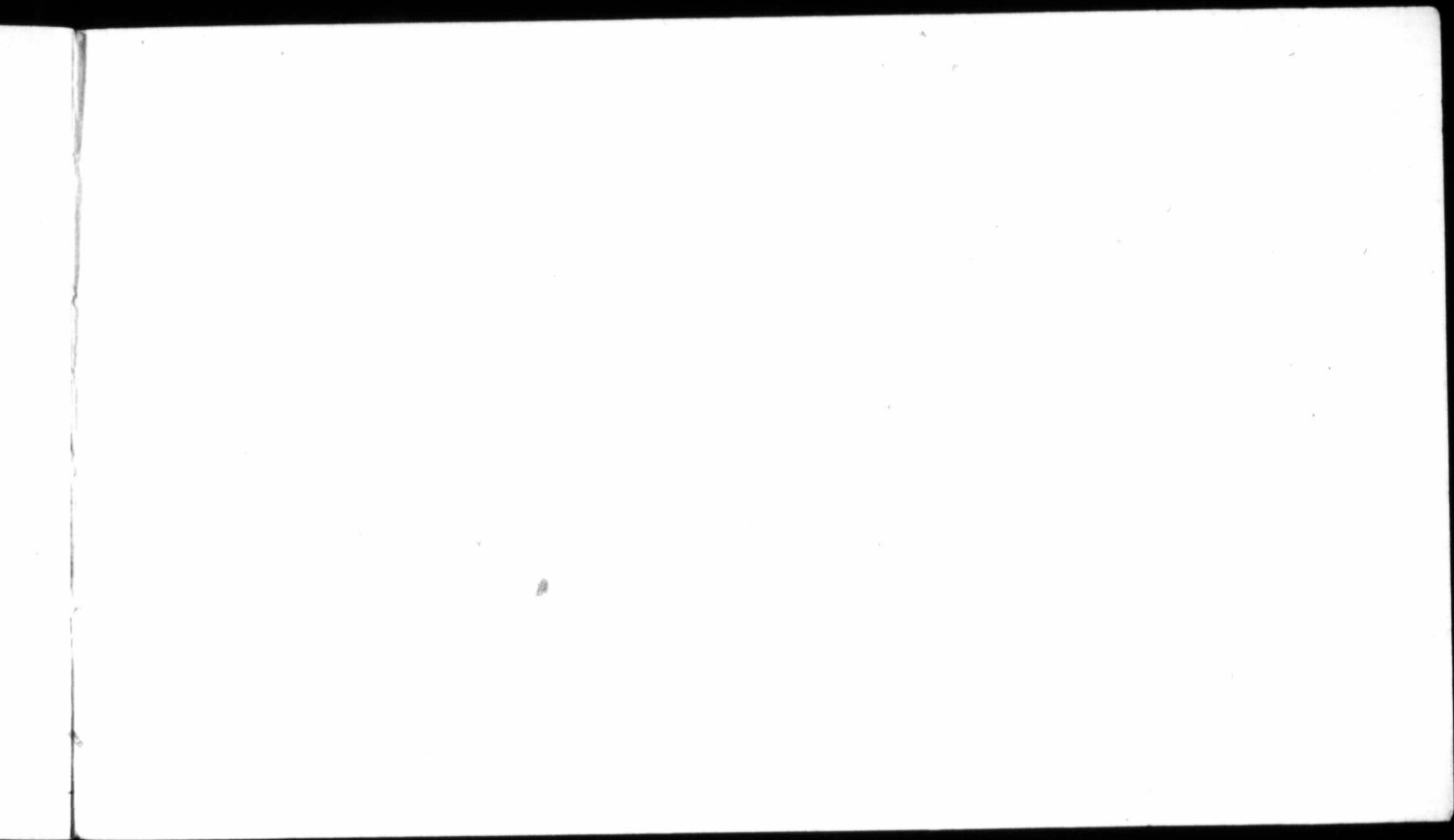
.....

RYRIE BROS.

100 N. 3rd St.

St. Paul, Minn.

111



RYRIE BROS  
DIAMOND MERCHANTS.  
and

SILVERSMITHS.

for  
Yonge and  
Adelaide Sts.  
TORONTO  
CAN

