

**CIHM  
Microfiche  
Series  
(Monographs)**

**ICMH  
Collection de  
microfiches  
(monographies)**



**Canadian Institute for Historical Microreproductions / Institut canadien de microreproductions historiques**

**© 1998**



The copy filmed here has been reproduced thanks to the generosity of:

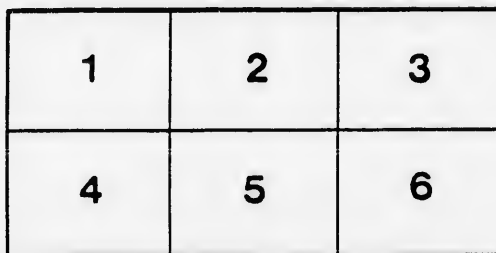
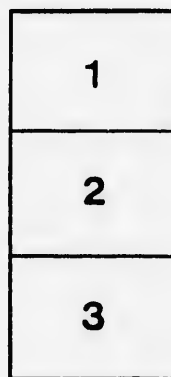
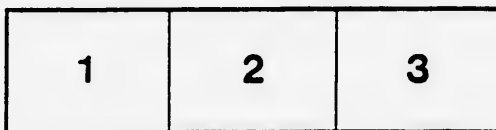
National Gallery of Canada,  
Library

The images appearing here are the best quality possible considering the condition and legibility of the original copy and in keeping with the filming contract specifications.

Original copies in printed paper covers are filmed beginning with the front cover and ending on the last page with a printed or illustrated impression, or the back cover when appropriate. All other original copies are filmed beginning on the first page with a printed or illustrated impression, and ending on the last page with a printed or illustrated impression.

The last recorded frame on each microfiche shall contain the symbol  $\rightarrow$  (meaning "CONTINUED"), or the symbol  $\nabla$  (meaning "END"), whichever applies.

Maps, plates, charts, etc., may be filmed at different reduction ratios. Those too large to be entirely included in one exposure are filmed beginning in the upper left hand corner, left to right and top to bottom, as many frames as required. The following diagrams illustrate the method:



L'exemplaire filmé fut reproduit grâce à la générosité de:

Musée des Beaux-Arts du Canada,  
Bibliothèque

Les images suivantes ont été reproduites avec le plus grand soin, compte tenu de la condition et de la netteté de l'exemplaire filmé, et en conformité avec les conditions du contrat de filmage.

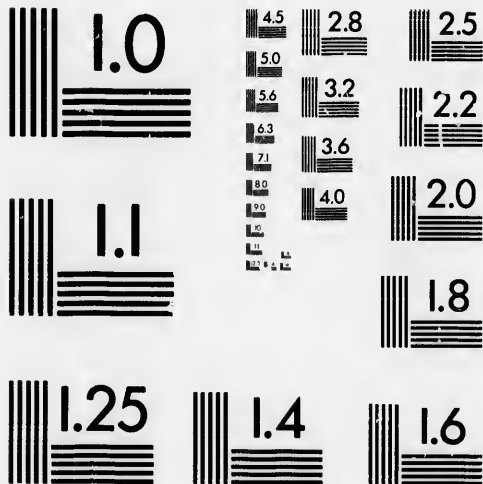
Les exemplaires originaux dont le couverture en papier est imprimée sont filmés en commençant par le premier plat et en terminant soit par la dernière page qui comporte une empreinte d'impression ou d'illustration, soit par le second plat, selon le cas. Tous les autres exemplaires originaux sont filmés en commençant par la première page qui comporte une empreinte d'impression ou d'illustration et en terminant par la dernière page qui comporte une telle empreinte.

Un des symboles suivants apparaîtra sur la dernière image de chaque microfiche, selon le cas: le symbole  $\rightarrow$  signifie "A SUIVRE", le symbole  $\nabla$  signifie "FIN".

Les cartes, planches, tableaux, etc., peuvent être filmés à des taux de réduction différents. Lorsque le document est trop grand pour être reproduit en un seul cliché, il est filmé à partir de l'angle supérieur gauche, de gauche à droite, et de haut en bas, en prenant le nombre d'images nécessaire. Les diagrammes suivants illustrent la méthode.

# MICROCOPY RESOLUTION TEST CHART

(ANSI and ISO TFST CHART No. 2)



APPLIED IMAGE Inc

1653 East Main Street  
Rochester, New York 14609 USA  
(716) 482 - 0300 - Phone  
(716) 288 - 5989 - Fax

20

40

137

25

# CATALO

## A Gnoi

T. M.

J. W. J.

On T

MR. MA

most

and Canad

collection i

Landscape,

and many

opportunity

his work.

*Evilwa*

# CATALOGUE

A Choice Collection of Pictures

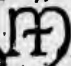
T. MOWER MARTIN, R.C.A.

TO BE SOLD BY AUCTION AT

J. W. JONES' AUCTION ROOMS,

242 DUNDAS ST. LONDON.

On Thursday Evening, April 30th, 1896

 R. MARTIN'S Paintings are to be found in the most select and valuable collections of England and Canada. He is represented in the Queen's collection in Windsor Castle by a large Canadian Landscape, also in the famous Lansdowne collection and many others. The present sale affords a good opportunity to secure original signed specimens of his work.

J. W. JONES,

Auctioneer

*Original in Martin papers, P.C*

ONCA98-P31

No.

Oils

1. A Beaver Meadow.
2. On Canoe Lake.
3. In the Fall.
4. Autumn, Muskoka.
5. An Old Pine Stump.
6. A Muskoka Trout Stream.

Water Colors

7. Evening on Tea Lake.
8. Niagara from Goat Island.
9. The End of Winter.
10. Cariboo Island, Lake Superior.
11. A Side Road.
12. Bow Range, Rocky Mountains.
13. Falls on Black River.
14. A Summer Day.

Oils

15. The Forest Path.
16. Beaver Meadow Creek.
17. Elm Forest.
18. Rainy Weather, Tea Lake.
19. Under the Electric Light.
20. A Northern Twilight.
21. On Muskoka River.
22. Among the Mulleins.
23. A Pair of Ducks.
24. A Woodland Road.
25. By the River Side.

No.

26. Ro
27. On
28. A
29. Sp
30. Tw

31. A
32. A
33. Th
34. Wh
35. On
36. On
37. Th

38. A
39. Pin
40. Tw
41. Snc
42. Ev
43. A T
44. Fra
45. Bov

46. A M
47. On
48. In t
49. Sun
50. Bea

No.

**Water Colors**

26. Rocky Mountains near Laggan.
27. On the River.
28. A Pair of Pigeons.
29. Spring Flowers.
30. Twin Peaks at Banff.

**Oils**

31. A Back Country Road. X
32. A Woodland Stream.
33. The Hill Road.
34. When the Snow Goes Away.
35. On Lake of Bays, Muskoka.
36. On the Hillside.
37. Threatening Weather.

**Water Colors**

38. A Day in June.
39. Pine Point, Georgian Bay.
40. Twilight \*
41. Snowy Range, Rockies.
42. Evening on the Lake.
43. A Trout Stream
44. Fraser River, B.C.
45. Bow River, Rockies.

**Oils**

46. A November Day.
47. On the Creek
48. In the Marsh Country.
49. Sun and Shadow.
50. Beaver Falls



