

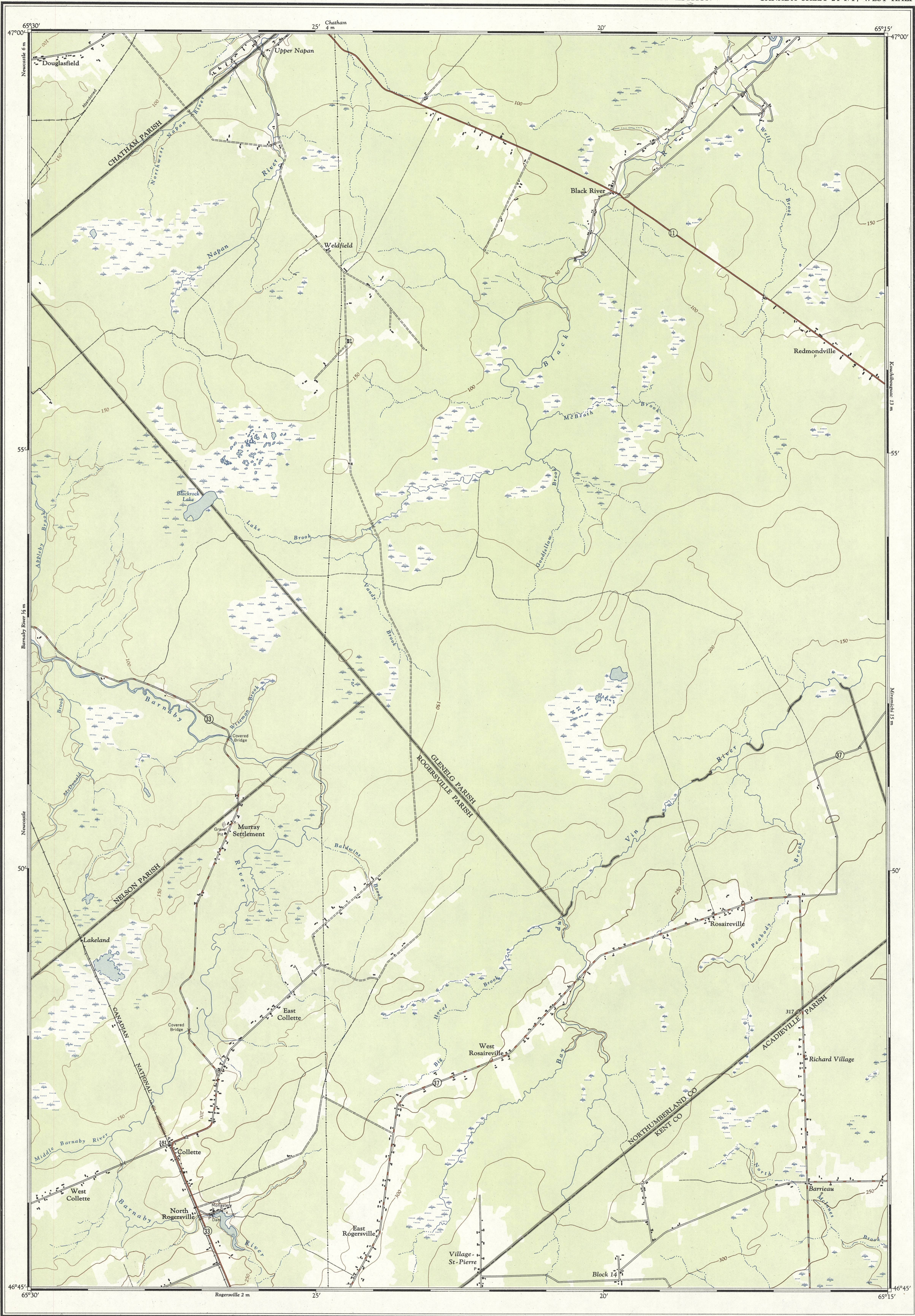
MINES AND TECHNICAL SURVEYS
SURVEYS AND MAPPING BRANCH

NATIONAL TOPOGRAPHIC SERIES

1:50,000

FIRST EDITION

CANADA SHEET 21 1/14 WEST HALF

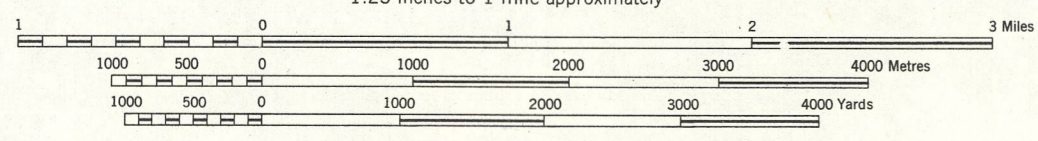


Produced and printed by the Surveys and Mapping Branch, Department of Mines and Technical Surveys, 1955, from air photographs taken in 1950.

MAGNETIC DECLINATION 23°29' WEST AT CENTRE OF MAP 1955 Annual magnetic change 2' easterly

KOUCHIBOUGUAC
NEW BRUNSWICK

SCALE 1:50,000
1.25 inches to 1 mile approximately



CONTOUR INTERVAL 50 FEET
Elevations in Feet above Mean Sea Level
North American Datum 1927

Copies may be obtained from the Map Distribution Office, Department of Mines and Technical Surveys, Ottawa, at 25 cents each.

REFERENCE

Roads:	more than 2 lanes	2 lanes
hard surface, all weather	less than 2 lanes	
loose surface, all weather	2 lanes or more	less than 2 lanes
loose surface, dry weather		
winter; cart track		
trail or portage		
Railway: normal gauge, single track		
Boundaries:		
provincial (monument)		
county or district		
township or parish		

REFERENCE

Power transmission line	
Telephone line	
Horizontal control point	
Buildings	
School; Post Office	
Church; Cemetery	
Streams:	
intermittent or dry	
indefinite	
Marsh or Swamp	
Contours	
Forest	

21 P/4	21 P/3	21 P/2
SEVOGLE	CHATHAM	POINT ESCUMINAC
21 I/13	21 I/14	21 I/15
NEWCASTLE	KOUCHIBOUGUAC	POINT SAPIN
21 I/12	21 I/11	21 I/10
BLACKVILLE	ROGERSVILLE	RICHIBUCTO

INDEX TO ADJOINING SHEETS

KOUCHIBOUGUAC
21 1/14 WEST HALF

SUPERSEDED EDITION