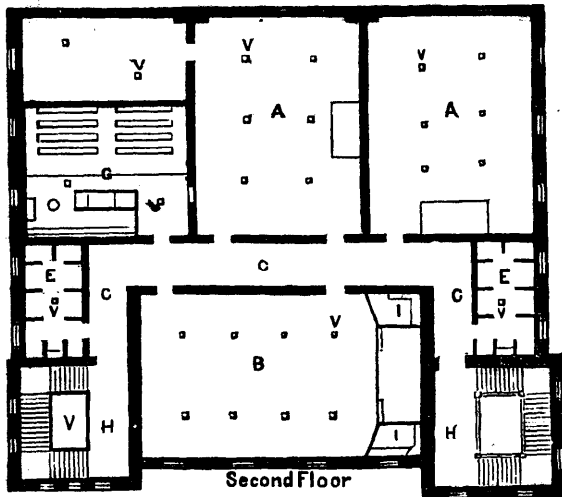
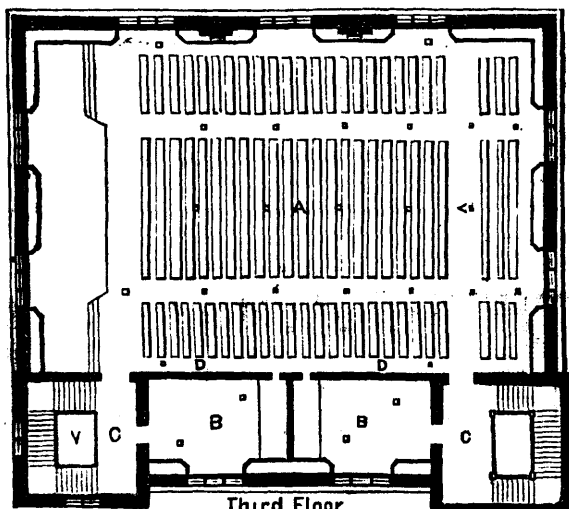


seat 60 pupils, rise in four tiers upon platforms 8 inches high. In the rear of the laboratory, but not connecting with it, is a large recitation-room, 16 by 30 feet. For the pupils in the second story two wardrobe-rooms are provided, 21 by 11 feet, and of full height, furnished in all respects like those below. The third story, which is in the Mansard roof, is occupied chiefly by the hall or chapel, a large room, 60 by 87 feet, and 22 in height, used every morning for devotional exercises, and many times a week for other purposes. It is capable of seating 800 to 1000 persons, and will therefore be useful on public occasions, such as graduation-day, &c. The roof is supported by six trusses, and a large ventilator opens directly to the external air, to be used whenever other means of ventilation are not sufficient. In this room are cabinets of minerals and shells, and connecting with it, as well as with the stairways, are two recitation-rooms, each 16 by 25 feet.



A, A, Third Class Rooms. B, Junior Class Room. C, C, Corridors. E, F Wardrobe Rooms. G, Laboratory. H, H, Staircase Halls. I, I, Philosophical Apparatus. V, Ventilating Shaft. e, v, Ventilating Registers.

All the partitions from the basement to the third story are of solid brick, and as the two stairways and the various corridors are enclosed within brick walls, the building may be regarded as quite secure against possible danger to the pupils or a crowded assembly in case of fire. The floors also are made partly fire-proof by a thick layer of laths and deafening mortar. The interior of each room is fitted with inside blinds and moulded back linings, and the walls are prepared with slated black-boards. The entire inside finish of the building for doors, windows, wall-lining, &c., is of soft brown ash. The wood is gummed to fill the grain and then oiled. The floors are of southern pine. The corridors are 8 feet, and the stairways 6 feet wide, the latter of easy ascent, well lighted, and strongly built. Four of the session-rooms have windows opening into the corridors, by which a more free circulation of air can be secured when necessary, the lower sashes only having ground glass.



A, Large Hall. B, B, Recitation Rooms. C, C, Staircase Halls. D, D, Cabinets. V, Ventilating Shaft. e, Ventilating Registers.

VENTILATION.

In the south tower of the building is a ventilating shaft, 8 feet square, reaching from basement to roof, open to the sky, and kept warm by a small furnace, the smoke-pipe of which passes centrally through the entire length of the shaft. To insure perfect security against fire, the shaft is lined with corrugated iron. Leading into this main shaft are large ventiducts, 3 by 8 feet, one for each story, constructed of smoothly-planed boards; and every room in the building is connected with one of these ventiducts by several ventilating flues, 10 by 12 inches, opening downward through registers in the floor. Under each school-room there are six or more of such flues, and under the large hall twenty-four. Upon placing a smoking match, or anything of the kind, near one of these registers, it is found that the air is constantly and rapidly passing out through them. Still further to promote ventilation by allowing the air to escape from near the top of the room, as well as through the floor, swivel-blinds are placed over all the doors, through which the air passes freely into the corridors, and up the stairways into the assembly-room, where there are large ventilators in the ceiling, which can be opened or closed at pleasure, and which lead directly to one large ejector placed at the highest point of the roof.

ARRANGEMENT OF ROOMS.

The building is designed to accommodate 409 scholars, distributed as follows:—

Fourth Class, in three rooms, (56, 56, 54,).....	166
Third Class, in two rooms, (56, 54,).....	110
Junior Class, in one room,.....	77
Second Class, in one room,.....	56

Total number,..... 409

By a careful examination of the records of the school for many years past, it was ascertained that these figures express quite accurately the ratio of decrease from the lowest class to the highest.

FURNITURE.

Each school-room is furnished with 56 single desks and chairs of solid oak, the desks having lids falling upon rubber; with teacher's platform, desk and chairs; waste-basket, step-ladder, clock, and thermometer; also with recitation-benches to seat 30 pupils, as it is the plan of the school to have each teacher take a separate department of study, rather than give the entire instruction in various branches to one particular class.

IV. Departmental Notices.

PRINTED SHEETS FOR SCHOOLS.

1. The New Programme .....	} Large Sheets.	} The ten sheets sent free of postage for 50 cents.
2. The New Limit Table .....		
3. A Blank Time Table .....		
4. Duties of Pupils .....		
5. The Ten Commandments.....		
6. Library Regulations .....		
7. List of authorized Text Books .....	} Small Sheets.	
8. Merit Cards and their uses .....		
9. Hints on constructing Time Tables.....		
10. Departmental Notices .....		

McGill College and University, Montreal.

SESSION 1873-4.

- THE FACULTY OF LAW, opens October First.
- THE FACULTY OF MEDICINE, October First.
- THE FACULTY OF ARTS, September Fifteenth.
- THE DEPARTMENT OF PRACTICAL AND APPLIED SCIENCE, September Fifteenth.
- THE MCGILL NORMAL SCHOOL, September First.

The Annual Calendar, containing the announcements of the above—also of the Exhibitions and Scholarships in Arts, open to competition—may be obtained of the undersigned.

W. CRAIG BAYNES, B.A.,  
Secretary and Registrar.