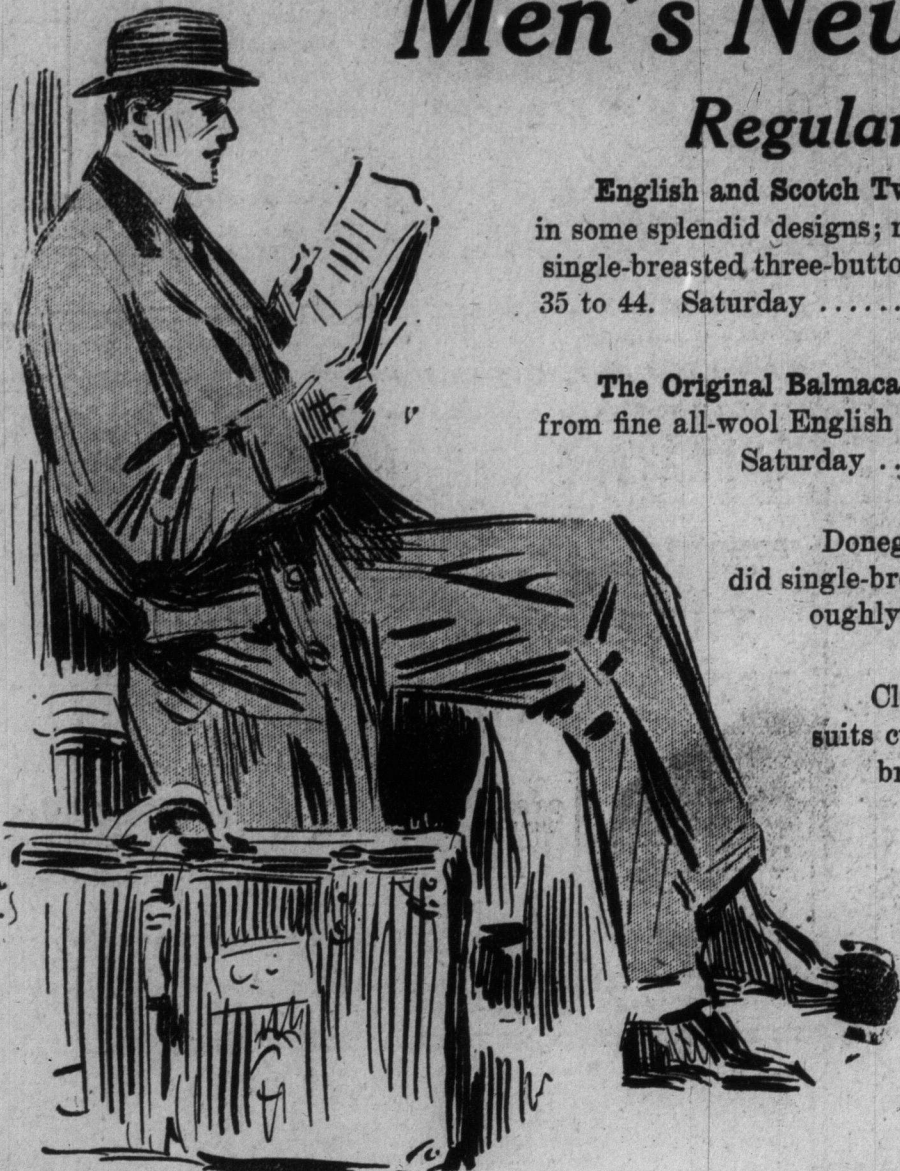


Store Opens  
at 8.30 a. m.

# The Robert Simpson Company, Limited

Store Closes  
at 5.30 p. m.

## Men's New Spring and Summer Suits Regular \$15 and \$18 Values, to Clear at \$10.95



English and Scotch Tweed Suits, in brown and gray stripe patterns, and English Worsted Suits, in browns and grays, in some splendid designs; new Spring and Summer Suits, which are most thoroughly tailored by competent tailors. Smart single-breasted three-button sacque style, linings of twill mohair. An exceptional opportunity to get your Spring suit. Sizes 35 to 44. Saturday . . . . . 10.95

### DURWARD'S BALMACAAN SPRING OVERCOATS AT \$20.00.

The Original Balmacaan Coat. This coat is not the extreme style, but stylish without exaggeration. They are made from fine all-wool English coating, in brown with a small pattern, Raglan shoulders, loose sleeves, cuffs and leather buttons. Saturday . . . . . 20.00

### DURWARD'S DONEGAL TWEED COATS.

Donegal tweeds, in these English-made coats, are extremely popular. They are made up in splendid single-breasted Chesterfield styles, also in the fashionable semi-Balmacaan styles, and most thoroughly tailored. Sizes 36 to 44. Price . . . . . 25.00

### NARROW STRIPE SPRING SUITS.

Cloths showing narrow stripes, splendid English worsted cloths, in gray with a stripe; suits cut on one of the season's most approved young men's styles, the coat being single-breasted to close with three buttons, the vest single-breasted, high cut. Price . . . . . 25.00 (Main Floor)

### Boys' Blue Serge Suits \$4. 5

200 Smartly Tailored Two-Piece Suits, made from rich navy blue serges, Spring and Summer double-breasted styles, with full-cut bloomers, twilled linings, sizes 25 to 34. Saturday special . . . . . 4.95

### YOUTHS' SUITS FOR SPRING.

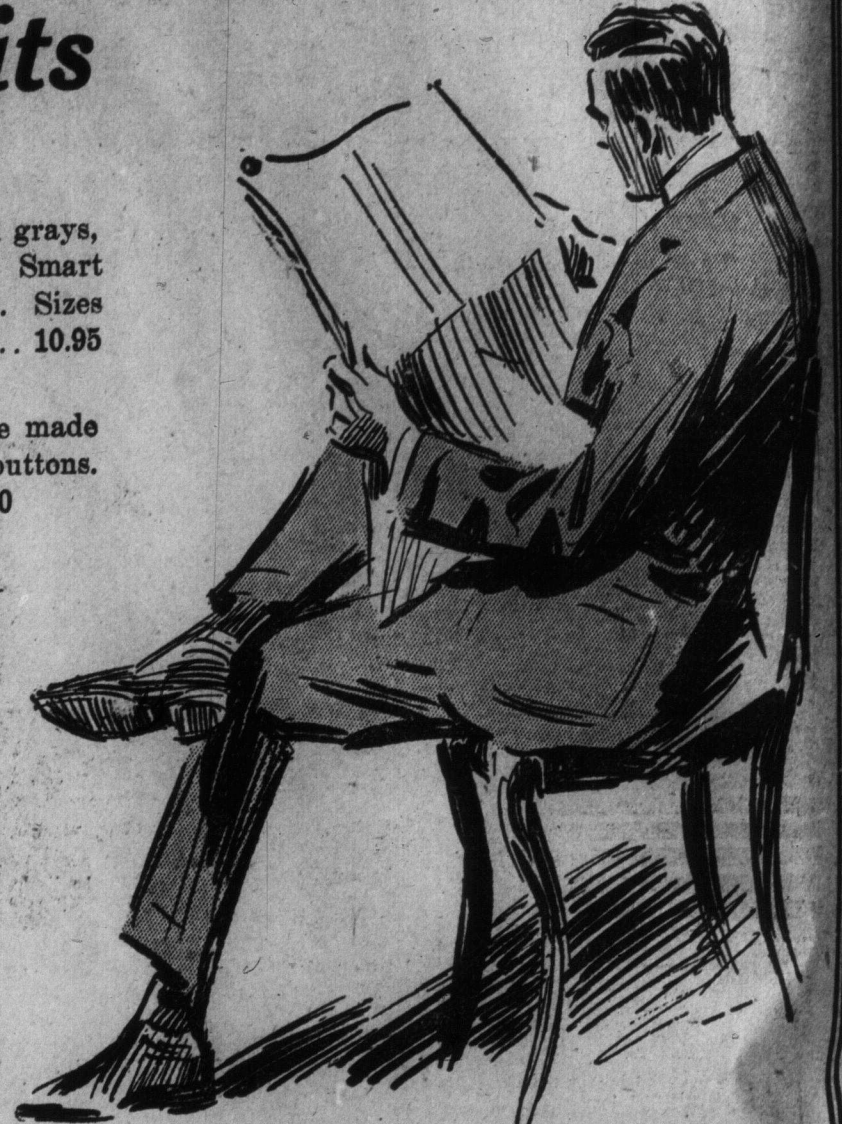
Smartly tailored, single-breasted styles, with vests and long cuff-bottom trousers, made from English tweeds and worsteds, in dark and medium shades of grays and browns, new models for Spring and Summer wear. Sizes 32 to 35. Saturday . . . . . 12.00

### OUR SPECIAL \$5.00 SPRING REEFERS FOR BOYS.

Very smartly designed, in neat double-breasted styles, with fancy buttons and emblems on sleeves, made from fine imported fawn covert cloths, gray and black shepherd plaids, fine gray Bannockburn tweeds, neatly tailored, in sizes 2 1/2 to 9 years. Saturday . . . . . 5.00

### BOYS' SHIRT WAISTS, 50c.

400 Tapeless Shirt Waists, made from fine woven and cambric washable fabrics; full cut blouse style, with soft attached collars and bar fastener for tie. Wide range of patterns. Sizes 8 to 14 years. Saturday . . . . . .50



## The Second Day of Bedstead and Bedding Sale

### IRON BEDSTEAD, SPRING AND MATTRESS.

Iron Bedstead in white enamel finish, has heavy pillars and neatly designed fillers, 4-6 size only.

Mattress filling is curled seagrass, with heavy layer of jute felt at both sides, tufted and covered in twill ticking.

Spring, frame is in kiln-dried hardwood, finely woven steel wire, well supported. Regularly \$8.75. Special selling, complete. 6.80

### BRASS BEDSTEAD, SPRING AND MATTRESS.

Brass Bedstead, has two-inch pillars, heavy caps, in bright finish, 4-6 size only.

Mattress, filled with sanitary curled seagrass and heavy layer of cotton felt at top and bottom, neatly tufted and covered in art ticking.

Spring—The frame is made of steel tubing, the spring is close coil steel wire. Regularly \$18.75. Special selling, complete. 13.15

### BRASS BEDSTEAD, MATTRESS AND SPRING.

Brass Bedstead, has heavy two-inch continuous posts, with evenly divided fillers. Can be supplied in satin or polette finishes, 4-6 size only.

Mattress, filled with pure cotton felt, carefully selected and encased in art ticking.

Spring—The frame is made of steel tubing, spring is close coil steel wire. Regularly \$30.00. Special selling, complete . . . 20.95

### BRASS BEDSTEAD, MATTRESS AND SPRING.

Brass Bedstead, has heavy two-inch posts and top rails, with ball corners, 1 1/4-inch fillers, supplied in bright finish, 4-6 size only.

Mattress, filled with pure cotton felt, carefully selected, stitched edges, neatly tufted and covered in high-grade art ticking.

Spring—The frame is made of steel tubing, spring is finely woven steel wire, with coil rope edge and the ends are strongly reinforced. Regularly \$37.25. Special selling, complete . . . . . 26.95

Mattress filled with seagrass, with layer felt top and bottom, tufted and covered in twill ticking. Regularly \$2.60. Special selling . . . . . 2.15

Mattress, the filling is of curled seagrass, with layer of cotton felt at both sides, neatly tufted and covered with fancy art ticking. Regularly \$3.45. Special selling . . . . . 2.40

Mattress, filled with pure elastic cotton felt, neatly tufted, has rolled stitched edges, covered in art ticking. Regularly \$7.50. Special selling . . . . . 4.25

Bed Spring, steel tube frame and extra fine steel wire. Regularly \$5.00. Special selling . . . . . 3.95

## Flowers

- 1,000 Fresh Cut Roses, assorted colors, per doz. . . . . .39
  - 1,000 pkts. Sweet Pea Seed, 1/4 lb. pkts. Regular 25c. Saturday, per pkt. . . . . .20
  - 2,000 pkts. Emerald Lawn Grass Seed, in 1/2 lb. pkts. Saturday, per pkt. . . . . .12 1/2
  - 200 lb. Best Quality Shallots, Saturday, 2 lb. . . . . .25
  - 100 doz. Gladiolus Bulbs, mixed colors, Regular 25c. Saturday, per doz. . . . . .20
  - Gaillardia, Coreopsis, Canterbury Bells, Larkspur, Foxglove, Lily of the Valley, etc., all hardy roots. Saturday, each . . . . . .15
  - Vegetable and Flower Seeds, put up expressly for us. 16 pkts. . . . . .25
- See our line of Shrubs and Rose bushes. (Basement.)

## OTHER TIMES, OTHER MANNERS

On the third floor there is on view the third of this store's series of famous paintings—"CHOOSING THE BRIDE," by Makofsky, painter of the first of the series, "The Wedding Feast." The incident pictured is from the history of Old Russia, and the customs of the period are sketched true to the life by this most skilful of artists. You are invited to see the painting today and tomorrow, and we can promise you a few moments of the keenest enjoyment. Size 15 x 10 feet; value \$50,000.00; owned by Schumann's Sons, New York.

## A Saturday Sale of Boots, Pumps and Oxfords

- 3000 Pairs Men's "Victor" and Other High-Grade Boots; \$4.00, \$4.50 and \$5.00 values . . . . . 2.95
- 400 Pairs Women's "Queen Quality" and Other High-Grade Pumps and Oxfords; \$3.00, \$3.50 and \$4.00 values . . . . . 1.95
- 3600 Pairs Women's "Dorothy Dodd" and Other High-Grade Boots; \$3.50 to \$6.00 values . . . . . 2.45

### FIRST CHOICE AT 8.30 a.m.

### WOMEN'S \$3.00, \$3.50 AND \$4.00 PUMPS AND OXFORDS, \$1.95.

Dainty shoes, in both button and lace styles, also Colonial and Plain Pumps, hand-turn and Goodyear welted soles, dull kid, patent colt, gunmetal, tan calf, suede, and fancy fabrics. Sizes 2 1/2 to 7. All one price Saturday . . . . . 1.95

### WOMEN'S HIGH-GRADE BOOTS, \$2.45.

Boots that sell regularly at \$3.50, \$4.00, \$4.50, \$5.00 and \$6.00, in all the popular leathers and styles, hand-turn, Goodyear welt, and flexible McKay soles, high, medium, or low heels, some have fancy tops; all sizes from 2 1/2 to 8. Come at 8.30 for first choice. Saturday . . . . . 2.45

### MEN'S \$4.50 AND \$5.00 VICTORS, \$2.95.

600 Pairs Men's "Victor" Boots, 300 pairs are tan calf button on the new Balkan last, with medium high toe and heel, and 300 pairs are black velour calf laced Blucher style on an easy-fitting foot reform last, with low heel and Goodyear welted soles. All sizes from 5 to 11. Regularly \$4.50 and \$5.00. Saturday, 8.30 . . . . . 2.95

### MEN'S \$3.50 TO \$6.00 BOOTS, \$2.95.

Gunmetal, black velour calf, tan Russia calf, and patent colt leathers, button and laced styles, high or low heels, Goodyear welted soles; there are some exceptionally fine boots in this special sale. The sizes are complete from 5 to 11. Regular \$3.50, \$4.00, \$4.50, \$5.00 and \$6.00 values. Saturday, 8.30 . . . . . 2.95

(Second Floor)

## Wall Papers at Factory Prices

A few thousand rolls of good selling Papers to be cleared. Some of these are broken lines; every roll perfect and quantities sufficed for several rooms of each color and design.

English Cork Papers, in browns, greens, tans, grays, good stock and colorings for dining-rooms, halls and dens. Regular 25c roll. Saturday . . . . . .14

Imported Tapestries, Metallics, Velours, in browns, tans, buffs, grays, tans with touches of red, blue, yellow, for dining-rooms, halls, dens, libraries. Regular 35c roll, Saturday. .19. Regular 50c roll, Saturday . . . . . .29

Imported Parlor Papers, in greens, tans, grays, champagne, ivory, white, in self tones; some with blending colorings; to be used as all-over walls, uppers, or panels. Regular 50c roll, Saturday. .31. Regular 75c roll, Saturday. .41. Regular \$1.00 roll, Saturday . . . . . .61

Domestic Flats, Silks and Tapestries, for parlors, halls, dining-rooms or dens, in brown, wood shades, greens, tans. Regular 25c roll, Saturday. .16. Regular 15c roll, Saturday. .9

Imported and Domestic Bedroom Papers, on light grounds and overprints, in floral and stripe chintz and cretonne, good colorings. Regular 35c roll, Saturday. .19. Regular 25c roll, Saturday. .14. Regular 15c roll, Saturday . . . . . .9

### PAINTS, KALSOES, WAXES AND BRUSHES.

1000 Gallons English Paint, our regular line of inside or outside use, full line of colors for woodwork, floors, verandahs, walls. Quart. .55. Pint . . . . . .30

Enamels for Baths, Bedsteads or Woodwork, in white, blue, cream, pink, black. Per tin . . . . . .12 1/2, .25, .45, .75

Floor Waxes, recommended by architects, Ronuk, Johnson, C. & B., and Oak, for floors and linoleums. Per tin . . . . . .45, .55, .90 and 1.00

Varnish Stain, in golden oak, mahogany, walnut, cherry, rosewood, for floors and woodwork, imitates natural wood. Per pint, .40. Per quart . . . . . .75

Varnish Paint and Kalso Brushes. Prices range from, each .5, .10, .15, .25, .35, .5/ to . . . . . .4.5/

(Fifth Floor)

# The Robert Simpson Company, Limited

## Special Values Saturday in Youths' Soft Hats

In fine American fur felt, mushroom or flat, curl brims, also dressy trooper shapes, trimmed with bows at back, quarter or at side; colors navy, brown, mouse, steel, slate, amber, moss and ivy, also black. Extra good values at . . . . . 1.50 and 2.00

Christie's English-made Soft Hats, in 2 oz. quality, nobby shapes for spring and summer wear, in pearl, slate, silver, navy, tan and black, specially well finished. Saturday . . . . . 2.50

Soft Hats, by the finest Italian manufacturer, in all the leading shapes and colors of navy, slate, brown, green, etc.; superior quality felt, and extra fine finish, at . . . . . 3.50

Battersby's, King, Christy, and other well-known English manufactured hats, in every new and popular design, are here for your inspection and selection. Special values, at . . . . . 2.00 and 2.50

Men's Caps, in tweeds, chevots, worsteds, serges, mercerized cloths and silk; in stripes, checks, wales and fancy patterns. At 40c. 75c. \$1.00 and \$1.50.

Boys' Caps, Variety or school shape, in velvets, cords, felts, beaver and melton cloths. Specially good qualities and fine finish, at . . . . . .25 and .30 (Main Floor.)

## Men's Shirts, Ties, and Other Furnishings Low Priced

1,000 Shirts bearing the Simpson label, a guarantee of quality, size and finish. Lots of designs and colorings, stiff or soft cuffs, fastenings, all sizes. Regularly \$2.50, \$3.00 and \$3.50. Saturday . . . . . 1.99

MEN'S COMBINATIONS AT \$1.00.

All kinds for spring and summer wear, including balbriggans, lisle thread, merino, mesh knits, porous knits and maincocks. Long or short sleeves, knee or ankle length, no sleeves and loose knee, made in athletic style. All sizes in each style, 34 to 44. Saturday . . . . . 1.00 (Main Floor.)

## Grocery List

- Finest Creamery Butter, White Clover Brand, per lb. . . . . .34
- Toasted Cornflakes . . . . . 2 pks. .25
- Loaf Sugar . . . . . 4 lbs. .25
- Imported French Peas, per tin . . . . . .11
- Finest Canned Corn . . . . . 3 tins .25
- Rich Red Salmon, Tiger Brand, per tin . . . . . .15
- One Car Sunlight Oranges, sweet and seedless, per dozen . . . . . .23
- Choice Grape Fruit . . . . . .15
- Finest Canned Spiced, per tin . . . . . .15
- Garton's H. P. Sauce, per bottle . . . . . .16
- Baker's Cocoa, 1-2 lb. tin . . . . . .22
- Finest Canned Fruit, Raspberries, Strawberries and Cherries, per tin . . . . . .15
- Crossed Fish Brand Sardines . . . . . 2 tins .34
- Maconochie's Pickles, Mixed Chow and Walnuts, pint bottle . . . . . .22
- California Canned Asparagus Tips, per tin . . . . . .23
- Finest Mild Cheese, per lb. . . . . .18
- Choice Olives, 16-oz. bottle . . . . . .25
- Clark's Pork and Beans, large tin . . . . . .10
- Shirriff's Marmalade, 2-lb. jar . . . . . .23
- Fresh Fruit Cake, per lb. . . . . .15
- Fancy Mixed Biscuits, 2 lbs. . . . . .25
- Finest Fresh Pineapples . . . . . 2 for .25 (Basement.)