

THE CANADIAN ARCHITECT AND BUILDER

Vol. XX.—No. 9.

Toronto, Montreal—SEPTEMBER, 1907—Winnipeg, Vancouver

PRICE 25 CENTS  
\$3.00 PER YEAR

TILES FAIENCE MOSAICS  
**GRAVEN, DUNNILL & CO., LIMITED**  
JACKFIELD, E. S. O., SHROPSHIRE

ENAMELS LUSTRES  
WALLS

**KALAMEINED GLAD DOORS**

Artistic and Fireproof

SEND FOR BOOKLET

Automatic Heat Closing Fireproof Windows, Doors and Skylights, Fire Door Hardware, Adjustable Fire Door Hangers, Rolling Steel Shutters, Asbestos Lumber, Cornices, Corrugated Iron, Metal Ceilings, etc., Asbestos, Slate, Felt and Gravel Roofing.

**A. B. ORMSBY, LIMITED**

Factories: Queen & George Sts., TORONTO. 677-9-31 Notre Dame Ave. W., WINNIPEG  
Montreal Agents: Stinson-Reeb Builders' Supply Co., Limited, 188 William Street.

**OTIS-FENSOM ELEVATOR CO., Limited**

MANUFACTURERS OF "OTIS STANDARD ELEVATORS"

HEAD OFFICE:  
CONFEDERATION LIFE BLDG.,  
TORONTO.

MONTREAL OFFICE  
433 ST. JAMES ST.

WINNIPEG OFFICE  
44 CANADA LIFE BUILDING.

"MADE IN CANADA"

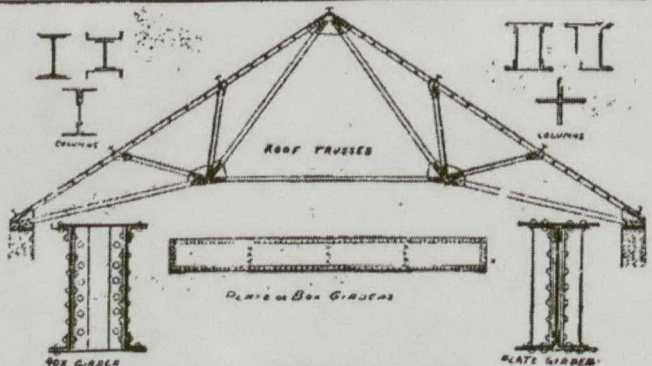
Bent Glass

Made in all Kinds of Glass on Short Notice.

Large Bent Plate Glass for Shop Fronts a Specialty.

Toronto Plate Glass Importing Co.  
(HILL & RUTHERFORD)  
135-143 Victoria Street

BENDING WORKS:  
209-213 Victoria Street  
TORONTO



**DOMINION BRIDGE CO. (LIMITED)**

WE BUILD { Bridges of all designs in both Iron and Steel, Roofs, Telephone Poles, House Girders and all kinds of Structural Iron Work.

OUR STOCK IN HAND COMPRISES { Steel Beams, Angles, Tees, Channels, Plates, Rolled Edged Flats, Bars, Rivets, Rounds, &c. Iron Beams, Bars, Squares, Turnbuckles, Rivets, &c.

Estimates furnished for Structural Iron Work delivered at building or erected

GEORGE E. EVANS,  
Ontario Agency: Room 36, Canada Life Building, Toronto. Telephone Main 2164

Post Office Address  
DOMINION BRIDGE CO., Ltd., Montreal, P. Works at Lachine Locks, P. Q.

**TURNBULL ELEVATORS**

SEE AD. PAGE VIII

**ELEVATORS**

The Turnbull Elevator Mfg. Co. Toronto

For all purposes. Satisfaction guaranteed. Write for prices and references

THE PARKIN ELEVATOR WORKS  
258 Catherine Street North,  
HAMILTON, ONT.