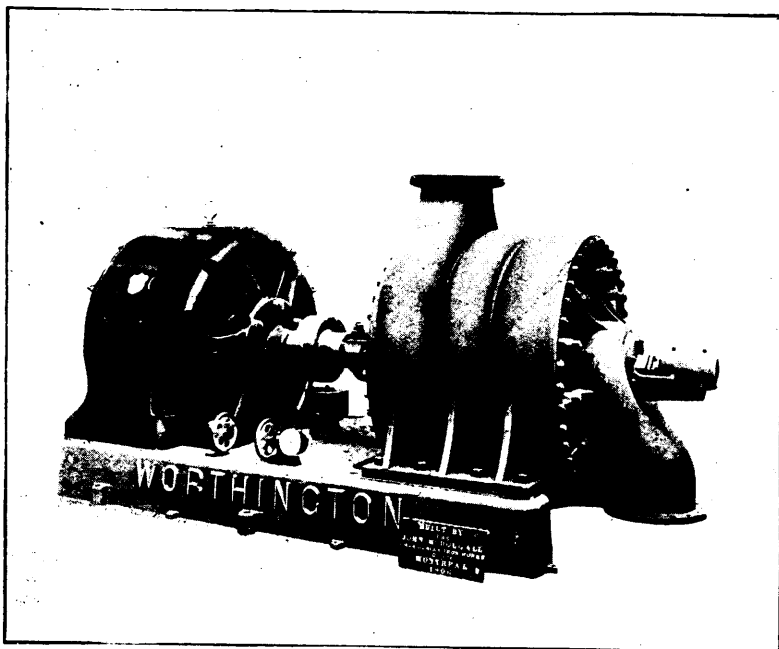


The JOHN McDOUGALL Caledonian Iron Works Co. Limited.

MONTREAL, P.Q.



14"-3 Stage Worthington Turbine Pump, Capacity 5 million gallons per 24 hrs.

Boilers

All Sizes and All Pressures.
Prompt Delivery.

Tanks

Water Tanks, Penstocks,
Steel Rivetted Pipe, Etc.

Forgings

Dredge Teeth, Bucket
Arms, Etc.

Machinery

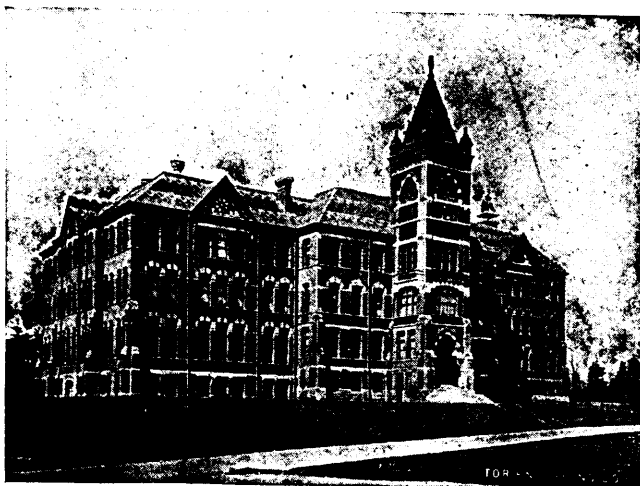
Complete Power Plants built
and installed.

Sole Manufacturers in Canada for WORTHINGTON Turbine Pumps and DOBLE Impulse Water Wheels.

SCHOOL OF PRACTICAL SCIENCE TORONTO

ESTABLISHED - - - - - 1878

THE FACULTY OF APPLIED SCIENCE AND ENGINEERING
OF THE UNIVERSITY OF TORONTO.



DEPARTMENTS OF INSTRUCTION:

- | | |
|-----------------------------|--------------------------|
| 1—Civil Engineering. | 4—Architecture. |
| 2—Mining Engineering. | 5—Analytical and Applied |
| 3—Mechanical and Electrical | Chemistry. |
| Engineering. | 6—Chemical Engineering. |

Special attention is directed to the facilities possessed by the school
for giving instruction in Mining Engineering.

LABORATORIES:

- | | | | |
|-------------|---------------|------------------|---------------|
| 1—Chemical. | 3—Milling and | 4—Steam. | 6—Electrical. |
| 2—Assaying | Ore Treatment | 5—Meteorological | 7—Testing. |

A Calendar giving full information, and including a list showing the
positions held by graduates, sent on application.

A. T. LAING, Registrar.

CANADIAN MINING INSTITUTE

Incorporated by Act of Parliament 1898.

AIMS AND OBJECTS.

(A) To promote the Arts and Sciences connected with the
economical production of valuable minerals and metals, by
means of meetings for the reading and discussion of technical
papers, and the subsequent distribution of such information as
may be gained through the medium of publications.

(B) The establishment of a central reference library and a
headquarters for the purpose of this organization.

(C) To take concerted action upon such matters as affect
the mining and metallurgical industries of the Dominion of Canada.

(D) To encourage and promote these industries by all law-
ful and honourable means.

MEMBERSHIP.

MEMBERS shall be persons engaged in the direction and
operation of mines and metallurgical works, mining engineers,
geologists, metallurgists, or chemists, and such other persons as
the Council may see fit to elect.

STUDENT MEMBERS shall include persons who are qualifying
themselves for the profession of mining or metallurgical engineer-
ing, students in pure and applied science in any technical school
in the Dominion, and such other persons, up to the age of 25
years, who shall be engaged as apprentices or assistants in mining,
metallurgical or geological work, or who may desire to participate
in the benefits of the meetings, library and publications of the
Institute. Student members shall be eligible for election as
Members after the age of 25 years.

SUBSCRIPTION.

Member's yearly, subscription.....	\$10.00
Student Member's do	2.00

PUBLICATIONS.

Vol. I, 1898, 66 pp., out of print	Vol. V, 1902, 700 pp., bound.
Vol. II, 1899, 285 pp., bound red cloth	Vol. VI, 1903, 520 pp., bound.
Vol. III, 1900, 270 pp., bound red cloth	Vol. VII, 1904, 530 pp., bound.
Vol. IV, 1901, 333 pp., bound.	

Membership in the Canadian Mining Institute is open to
everyone interested in promoting the profession and industry of
mining without qualification or restrictions.

Forms of application for membership, and copies of the
Journal of the Institute, etc., may be obtained upon application to

H. MORTIMER-LAMB, Secretary, Montreal.