

DAY, JUNE 14, 1913

ments

AVB HOMES!

Red brick house, 9 m. foundation, contains 4 hall, double living room, den, dining-room, kitchen, sewing-room, electric and gas, basement full house, furnace, front and back, attic lot \$4000

2-storey white brick 39x121, contains four bedrooms, closets, hall, sitting-room, dining-room, gas throughout, (compartments), mantel, parlor, \$4500

Pitcher & Son

Real Estate Brokers 3 MARKET STREET Phone 961, House 889, 515

Shultis & Co.

Real Estate, Insurance and Investment

Issuer of MARRIAGE LICENSES.

FOR SALE \$300 - New red brick cottage, one room car line, 6 rooms, bath, 2-apartment gas, wired for electricity, ah. Lot 33 ft. x 132 ft. easy terms.

FOR RENT 7-roomed house, North all conveniences. 8-roomed house, Eagle modern.

FOR SALE! 4-roomed house, brick, four bedrooms, convenient St. 2-storey brick, William St., 3 bedrooms, etc., etc.

FOR RENT 7-roomed house, convenient. 8-roomed house, Eagle modern.

FOR SALE! 4-roomed house, brick, four bedrooms, convenient St. 2-storey brick, William St., 3 bedrooms, etc., etc.

FOR RENT 7-roomed house, convenient. 8-roomed house, Eagle modern.

FOR SALE! 4-roomed house, brick, four bedrooms, convenient St. 2-storey brick, William St., 3 bedrooms, etc., etc.

FOR RENT 7-roomed house, convenient. 8-roomed house, Eagle modern.

FOR SALE! 4-roomed house, brick, four bedrooms, convenient St. 2-storey brick, William St., 3 bedrooms, etc., etc.

FOR RENT 7-roomed house, convenient. 8-roomed house, Eagle modern.

FOR SALE! 4-roomed house, brick, four bedrooms, convenient St. 2-storey brick, William St., 3 bedrooms, etc., etc.

FOR RENT 7-roomed house, convenient. 8-roomed house, Eagle modern.

FOR SALE! 4-roomed house, brick, four bedrooms, convenient St. 2-storey brick, William St., 3 bedrooms, etc., etc.

FOR RENT 7-roomed house, convenient. 8-roomed house, Eagle modern.

FOR SALE! 4-roomed house, brick, four bedrooms, convenient St. 2-storey brick, William St., 3 bedrooms, etc., etc.

FOR RENT 7-roomed house, convenient. 8-roomed house, Eagle modern.

FOR SALE! 4-roomed house, brick, four bedrooms, convenient St. 2-storey brick, William St., 3 bedrooms, etc., etc.

FOR RENT 7-roomed house, convenient. 8-roomed house, Eagle modern.

FOR SALE! 4-roomed house, brick, four bedrooms, convenient St. 2-storey brick, William St., 3 bedrooms, etc., etc.

FOR RENT 7-roomed house, convenient. 8-roomed house, Eagle modern.

FOR SALE! 4-roomed house, brick, four bedrooms, convenient St. 2-storey brick, William St., 3 bedrooms, etc., etc.

FOR RENT 7-roomed house, convenient. 8-roomed house, Eagle modern.

FOR SALE! 4-roomed house, brick, four bedrooms, convenient St. 2-storey brick, William St., 3 bedrooms, etc., etc.

FOR RENT 7-roomed house, convenient. 8-roomed house, Eagle modern.

FOR SALE! 4-roomed house, brick, four bedrooms, convenient St. 2-storey brick, William St., 3 bedrooms, etc., etc.

FOR RENT 7-roomed house, convenient. 8-roomed house, Eagle modern.

FOR SALE! 4-roomed house, brick, four bedrooms, convenient St. 2-storey brick, William St., 3 bedrooms, etc., etc.

FOR RENT 7-roomed house, convenient. 8-roomed house, Eagle modern.

FOR SALE! 4-roomed house, brick, four bedrooms, convenient St. 2-storey brick, William St., 3 bedrooms, etc., etc.

FOR RENT 7-roomed house, convenient. 8-roomed house, Eagle modern.

FOR SALE! 4-roomed house, brick, four bedrooms, convenient St. 2-storey brick, William St., 3 bedrooms, etc., etc.

FOR RENT 7-roomed house, convenient. 8-roomed house, Eagle modern.

FOR SALE! 4-roomed house, brick, four bedrooms, convenient St. 2-storey brick, William St., 3 bedrooms, etc., etc.

FOR RENT 7-roomed house, convenient. 8-roomed house, Eagle modern.

FOR SALE! 4-roomed house, brick, four bedrooms, convenient St. 2-storey brick, William St., 3 bedrooms, etc., etc.

FOR RENT 7-roomed house, convenient. 8-roomed house, Eagle modern.

FOR SALE! 4-roomed house, brick, four bedrooms, convenient St. 2-storey brick, William St., 3 bedrooms, etc., etc.

Financial

1836 THE BANK OF 1913 British North America

77 Years in Business. Capital and Surplus Over \$7,500,000.

are issued in denominations of \$10, \$20, \$50, \$100 and \$200 with the exact value in the leading foreign currencies stated plainly on the face. They are payable without discount, so that you can realize their full value without trouble. Hotels and Transportation Companies accept them as cash.

Our Travellers' Cheques

Open Saturday Evenings from 7 to 9

Hamilton Centennial Industrial Exposition and Old Home Week

August 11th to 16th, 1913

Manufacturers' Exposition of Hamilton-made Products, filling two Armories and Parade Grounds. Grand Carnival Midway. Aviation Exhibition daily. Military Pageant, with seven Canadian and U.S. Regiments participating. Fourteen Military Bands. Aquatic Sports. Motor Boat, Sailing and Rowing Races. Championship Athletic Events. Championship Ball Games, two U.S. League Teams. Trap-Shooting Tournament. Rifle Matches. Big Parades daily.

Come to Hamilton—Canada's Magneto

See the biggest Civic Holiday Week and Industrial Demonstration that has been seen in Canada—or elsewhere.

Special Rates by Rail and Boat—ask your Local Agent.

CHAS. A. MURTON, Secretary

Now, you Fisherman, Here is your Opportunity!

BIG FISHING COMPETITION!

FREE—VALUABLE PRIZES—FREE

PRIZE—For the largest small month Black Bass, a handsome Eight-Day Mission Clock.

PRIZE—For the largest Pickerel, a handsome Gold Watch.

PRIZE—For the largest fish of any kind, a Jointed Steel Rod, Silk Line, and Reel complete.

CONDITIONS: Month understood that any fish to be eligible is to be caught in the Great River between June 15th and July 15th, both days inclusive, to be shown and weighed at our store. Every effort will be made to try for these prizes. No restrictions.

THE BIG HARDWARE STORE T. A. SQUIRE

Both Phones 480

Simple Building

35 YOUR BLOOD BEEN DISEASED?

POISONS are the most prevalent and most serious diseases. They sap the blood of the victim and unless entirely eradicated from the system will cause complications. Beware of Mercury. It may suppress the symptoms—but it will cause all blood diseases.

FOR MIDDLE AGED MEN—Impudent acts or later excesses have broken down your system. You feel the symptoms stealing over you. Mentally, physically and morally you are not the man you used to be or should be. Will you heed the danger signals?

Are you a victim? Have you lost hope? Are you intending to marry? Has your blood been diseased? Have you any children? Our New Merion Treatment will cure you. What it has done for others it will do for you. Consultation free—Booth, Hamilton, Ed. 7-1000. (Illustrated) on Diseases of Men.

NAMES USED WITHOUT WRITTEN CONSENT. PRIVATE. No names on our envelopes. Everything Confidential. Question List and Cost of Treatment FOR HOME TREATMENT.

DRS. KENNEDY & KENNEDY

Cor. Michigan Ave. and Griswold St., Detroit, Mich.

NOTICE All letters from Canada must be addressed to our Canadian Correspondence Department in Windsor, Ont. If you desire to personally call at our Medical Institute in Detroit as we see and treat patients in our Windsor offices which are for Correspondence and delivery for Canadian business only. Address all letters as follows: DR. KENNEDY & KENNEDY, Windsor, Ont.

USE "COURIER" WANT ADS.

HEAT WAVE STRIKES

40,000 Workers Out in the Midlands and the North

Whether the hot weather has made men disinclined to work, or whether it is merely a coincidence, is hard to say, but it is certainly curious that with the arrival of the heat wave a series of extensive labor disputes has broken out in the Midlands and the North. This unrest takes the form generally of a demand for a minimum wage by unskilled workers. In every case the strike has been brought about without notice to the employers.

The following is an approximate list of the men on strike or locked out: Black Country Tube Workers, 3,000; Bradford Carters, 3,000; Sheffield Carters, 3,000; Falkirk Ironmolders (lock-out 4,000). In addition there are a number of minor disputes throughout the country.

IN MOURNING FOR DOG.

Sculptor to Design Tomb and Epitaph Written in His Honor.

PARIS, June 14.—Mrs. William Moore formerly Miss Kate Robinson, of New York, is in mourning for her favorite dog, which for many years had the distinction of being a well-known guest at the annual fetes in honor of the late King Edward. The dog remains are shortly to be transferred from its temporary grave in Mrs. Moore's back garden to a private tomb. A sculptor has been engaged to design a monument and a poet may be hired to write an epitaph in memory of the dear departed.

\$100 REWARD \$100

The readers of this paper will be pleased to learn that there is at least one dreaded disease that science has been able to cure in all its stages, and that is Catarrh of the Bladder.

It is the only positive cure now known to the medical fraternity. Catarrh being a constitutional disease, requires a constitutional treatment. Hall's Catarrh Cure is internally acting directly upon the blood and mucous surfaces of the system, thereby destroying the foundation of the disease, and giving the patient strength by building up the constitution and assisting nature in doing its work. The proprietors have so much faith in its curative powers that they offer One Hundred Dollars for any case that fails to cure. Send for testimonials.

Address F. J. CHENEY and CO., Toledo, Ohio.

Sold by all druggists, 75c.

Take Hall's Family Pills for constipation.

STRAW HATS

Traveller's samples—we bought at a discount—and are offering you the benefit of our buying. See our window. Estate of George Glasco.

LIFE

The poet's exclamation: "O Life! feel thee bounding in my veins," is a joyous one. Persons that can rarely or never take it, in honesty to themselves, are among the most fortunate. They do not live, but exist; for to live implies more than to be. To live is to be well and strong—to arise feeling equal to the ordinary duties of the day, and to retire not overcome by them—to feel life bounding in the veins. A medicine that has made thousands of people, men and women, well and strong, has accomplished a great work, bestowing the richest blessings, and that medicine is Hood's Sarsaparilla. The weak, run-down or debilitated, from any cause, should not fail to take it. It builds up the whole system, changes existence into life, and makes life more bounding. We are glad to say these words in its favor to the readers of our columns.

An Accident.

VANCOUVER, B. C., June 13.—Unexpectedly encountering an engine approaching from the opposite direction while he was riding a motor speeder on the track two miles east of Midway on the boundary branch of the Canadian Pacific, J. M. Davidson, agent at Midway, aged 33, sustained serious injuries. His wife, who was riding with him was so seriously hurt that she has since succumbed and their one-year-old baby in arms had a miraculous escape from death, being merely shaken up and bruised. Davidson's arm was severed close to the shoulder and he is suffering terribly from shock.

THE PROPER WAY.

The proper way to walk is to walk in Foot-rites. These handsome long-wearing shoes are sold by Joseph Broadbent, Arcade Street.

STRAW HATS

Largest selection of traveller's samples ever offered. Prices from 50 cents to \$2—the wholesale prices of the hats range as high as \$42 per dozen. The Estate of Geo. Glasco.

REMOVAL SALE

This is our last week at the old stand. After this week we will be located at 97 Colborne street, now occupied by Mr. A. W. Daniels, where we will carry the most new and complete lines of coal and gas ranges, furniture, baby carriages, builders' hardware, fishing tackle, paints, oils, glass, etc. It will pay you to get our prices.

John H. Lake

35 Colborne St. Open Evenings Cash or Credit Ball Phone 1486 Mach. Phone 22

\$3.50 RECIPE FREE FOR WEAK MEN.

SEND NAME AND ADDRESS TO DAY—YOU CAN HAVE IT FREE AND BE STRONG AND VIGOROUS.

I have in my possession a prescription for nervous debility, lack of vigor, weakened manhood, failing memory and lame back, brought on by excesses, unnatural drains, or the follies of youth, that has cured so many worn and nervous men right in their own homes—without any additional help or medicine—that I think every man who wishes to regain his manly power and virility, quickly and quietly, should maintain a temperature of 70 degrees below zero outside. Work to be completed by August 20th, 1913. Tenders to be addressed to W. B. Schuler, Sec. of Separate School Board, and marked "Tender."

THAMES IRONWORKS

Order from the High Court Stops Sale of Machinery

Just as the second day's sale of the plant and machinery of the Thames Ironworks Company at Greenwich was beginning on Wednesday morning, the auctioneer stated that he could not proceed, as he had just received an order from Mr. Justice Eve at the High Court to the effect that the property had been disposed of as a going concern. It is understood that the sale does not include the value of the site or buildings. There were some 150 people present.

WATER WORKS NOTICE!

HOURS FOR SPRINKLING LAWS

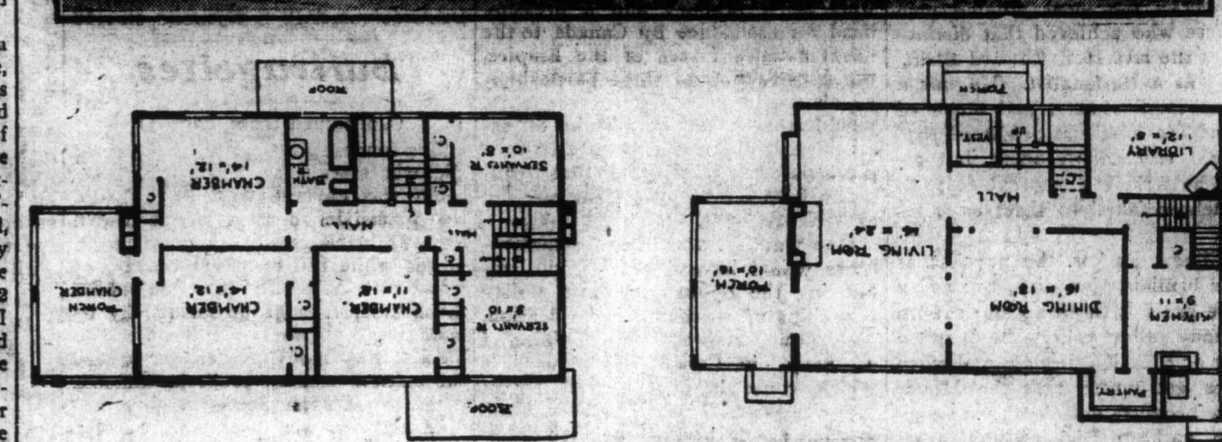
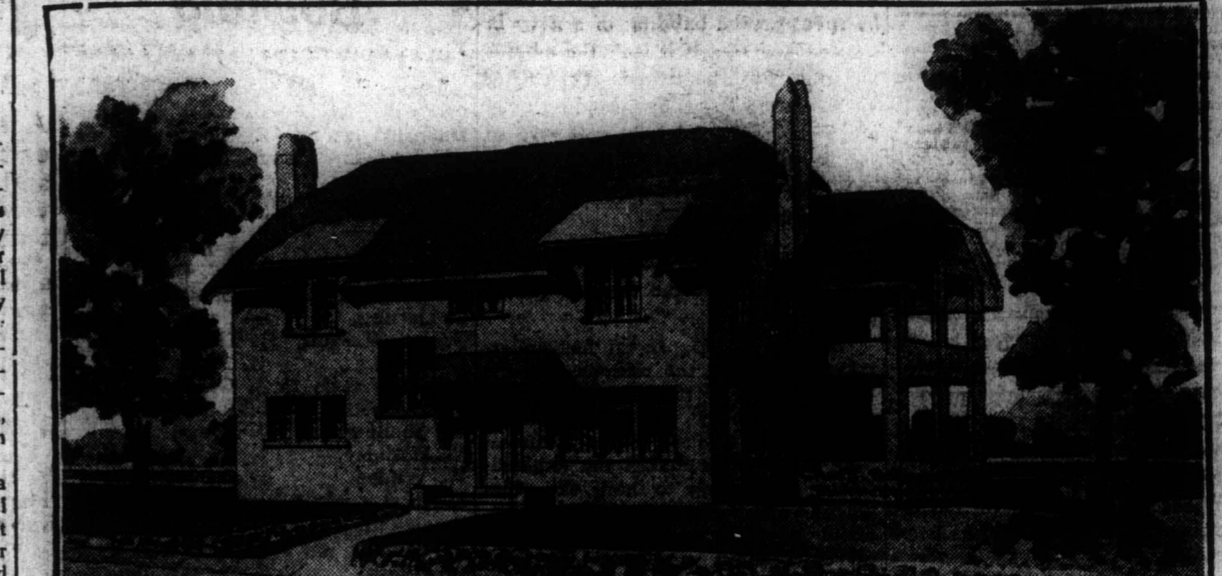
No person or persons shall be allowed to sprinkle, or use in any manner whatsoever, the water supplied by the Board of Water Commissioners upon Lawns, Gardens, Yards or Grounds of any description, except between the hours of six and eight o'clock p.m., on Lawns up to and including 500 square feet, on Lawns over that amount, from five to eight-thirty o'clock p.m., and any person wishing to use the water on their Lawns or Gardens in the morning in place of the evening may do so between the hours of six and eight o'clock a.m., by giving notice to that effect in writing to the Secretary.

It must, however, be clearly understood that the water cannot be used on Lawns or Grounds both morning and evening.

FRED W. FRANK, Secretary. Water Commissioners' Office, Brantford, June 14, 1913.

A Pretty Type of English Home

Designed By Chas. S. Sedgwick, Architect



The name of Ann Hathaway is suggestive of flowers and open air, gardens with the linen bleaching in the sunshine, and the smell of lavender, spinning-wheels and copper kitchen ware, low rafters and a scent of roses. A little difficult to live up to, perhaps, but not impossible if simplicity is the keynote of the whole.

Begin by tinting the plaster all over the house a deep cream, or if you are building the house yourself, have it colored before putting on.

Use for the curtains and upholstery in the living room an old English chintz, with a cream background thickly covered with a running design of the English briar rose, accentuating its color by using two little stiff-backed chairs near the open fireplace.

The house sits low to the ground and the stories are 8 feet 6 inches and 8 feet in height and the cornices brought down low. It has the broad appearance with a front facade of 43 feet, exclusive of the piazza at the right side, and a depth of 25 feet. Basement is full and complete under the entire house, the foundation being concrete and the exterior cement on walls carried down clean to the grade line. A house of this character requires ample grounds, and is well suited to a rural location and, with plenty of trees and foliage about it, has a quaint and homelike appearance. It is estimated to build this home, exclusive of heating and plumbing, in the manner herein described, for \$5,000.

The entrance is through a liberal vestibule to a central hall with platform stairs leading up in front at the left of the vestibule and underneath an ample coat closet. There is a large window on the stair platform lighting the hall. At the right of the entrance is the main living room, extending across the end of the house.

ent when the auctioneer made the announcement, and disappointment was expressed that the sale was not to be proceeded with. It is hoped in Greenwich that the works will be opened in a few weeks' time, and will give employment to a large number of men.

The Thames Ironworks property at Canning Town, where the Thunderer was built, has been disposed of to the Great Eastern Railway whose line adjoins the site. The plant and machinery, however, will be sold by auction, and it may be taken for granted that, as far as shipbuilding is concerned, the history of the yard has come to an end.

Use for the curtains and upholstery in the living room an old English chintz, with a cream background thickly covered with a running design of the English briar rose, accentuating its color by using two little stiff-backed chairs near the open fireplace.

The house sits low to the ground and the stories are 8 feet 6 inches and 8 feet in height and the cornices brought down low. It has the broad appearance with a front facade of 43 feet, exclusive of the piazza at the right side, and a depth of 25 feet. Basement is full and complete under the entire house, the foundation being concrete and the exterior cement on walls carried down clean to the grade line. A house of this character requires ample grounds, and is well suited to a rural location and, with plenty of trees and foliage about it, has a quaint and homelike appearance. It is estimated to build this home, exclusive of heating and plumbing, in the manner herein described, for \$5,000.

The entrance is through a liberal vestibule to a central hall with platform stairs leading up in front at the left of the vestibule and underneath an ample coat closet. There is a large window on the stair platform lighting the hall. At the right of the entrance is the main living room, extending across the end of the house.

ent when the auctioneer made the announcement, and disappointment was expressed that the sale was not to be proceeded with. It is hoped in Greenwich that the works will be opened in a few weeks' time, and will give employment to a large number of men.

The Thames Ironworks property at Canning Town, where the Thunderer was built, has been disposed of to the Great Eastern Railway whose line adjoins the site. The plant and machinery, however, will be sold by auction, and it may be taken for granted that, as far as shipbuilding is concerned, the history of the yard has come to an end.

Use for the curtains and upholstery in the living room an old English chintz, with a cream background thickly covered with a running design of the English briar rose, accentuating its color by using two little stiff-backed chairs near the open fireplace.

The house sits low to the ground and the stories are 8 feet 6 inches and 8 feet in height and the cornices brought down low. It has the broad appearance with a front facade of 43 feet, exclusive of the piazza at the right side, and a depth of 25 feet. Basement is full and complete under the entire house, the foundation being concrete and the exterior cement on walls carried down clean to the grade line. A house of this character requires ample grounds, and is well suited to a rural location and, with plenty of trees and foliage about it, has a quaint and homelike appearance. It is estimated to build this home, exclusive of heating and plumbing, in the manner herein described, for \$5,000.

The entrance is through a liberal vestibule to a central hall with platform stairs leading up in front at the left of the vestibule and underneath an ample coat closet. There is a large window on the stair platform lighting the hall. At the right of the entrance is the main living room, extending across the end of the house.

ent when the auctioneer made the announcement, and disappointment was expressed that the sale was not to be proceeded with. It is hoped in Greenwich that the works will be opened in a few weeks' time, and will give employment to a large number of men.

The Thames Ironworks property at Canning Town, where the Thunderer was built, has been disposed of to the Great Eastern Railway whose line adjoins the site. The plant and machinery, however, will be sold by auction, and it may be taken for granted that, as far as shipbuilding is concerned, the history of the yard has come to an end.

Use for the curtains and upholstery in the living room an old English chintz, with a cream background thickly covered with a running design of the English briar rose, accentuating its color by using two little stiff-backed chairs near the open fireplace.

The house sits low to the ground and the stories are 8 feet 6 inches and 8 feet in height and the cornices brought down low. It has the broad appearance with a front facade of 43 feet, exclusive of the piazza at the right side, and a depth of 25 feet. Basement is full and complete under the entire house, the foundation being concrete and the exterior cement on walls carried down clean to the grade line. A house of this character requires ample grounds, and is well suited to a rural location and, with plenty of trees and foliage about it, has a quaint and homelike appearance. It is estimated to build this home, exclusive of heating and plumbing, in the manner herein described, for \$5,000.

The entrance is through a liberal vestibule to a central hall with platform stairs leading up in front at the left of the vestibule and underneath an ample coat closet. There is a large window on the stair platform lighting the hall. At the right of the entrance is the main living room, extending across the end of the house.

ent when the auctioneer made the announcement, and disappointment was expressed that the sale was not to be proceeded with. It is hoped in Greenwich that the works will be opened in a few weeks' time, and will give employment to a large number of men.

The Thames Ironworks property at Canning Town, where the Thunderer was built, has been disposed of to the Great Eastern Railway whose line adjoins the site. The plant and machinery, however, will be sold by auction, and it may be taken for granted that, as far as shipbuilding is concerned, the history of the yard has come to an end.

Use for the curtains and upholstery in the living room an old English chintz, with a cream background thickly covered with a running design of the English briar rose, accentuating its color by using two little stiff-backed chairs near the open fireplace.

The house sits low to the ground and the stories are 8 feet 6 inches and 8 feet in height and the cornices brought down low. It has the broad appearance with a front facade of 43 feet, exclusive of the piazza at the right side, and a depth of 25 feet. Basement is full and complete under the entire house, the foundation being concrete and the exterior cement on walls carried down clean to the grade line. A house of this character requires ample grounds, and is well suited to a rural location and, with plenty of trees and foliage about it, has a quaint and homelike appearance. It is estimated to build this home, exclusive of heating and plumbing, in the manner herein described, for \$5,000.

The entrance is through a liberal vestibule to a central hall with platform stairs leading up in front at the left of the vestibule and underneath an ample coat closet. There is a large window on the stair platform lighting the hall. At the right of the entrance is the main living room, extending across the end of the house.

ent when the auctioneer made the announcement, and disappointment was expressed that the sale was not to be proceeded with. It is hoped in Greenwich that the works will be opened in a few weeks' time, and will give employment to a large number of men.

The Thames Ironworks property at Canning Town, where the Thunderer was built, has been disposed of to the Great Eastern Railway whose line adjoins the site. The plant and machinery, however, will be sold by auction, and it may be taken for granted that, as far as shipbuilding is concerned, the history of the yard has come to an end.

Use for the curtains and upholstery in the living room an old English chintz, with a cream background thickly covered with a running design of the English briar rose, accentuating its color by using two little stiff-backed chairs near the open fireplace.

The house sits low to the ground and the stories are 8 feet 6 inches and 8 feet in height and the cornices brought down low. It has the broad appearance with a front facade of 43 feet, exclusive of the piazza at the right side, and a depth of 25 feet. Basement is full and complete under the entire house, the foundation being concrete and the exterior cement on walls carried down clean to the grade line. A house of this character requires ample grounds, and is well suited to a rural location and, with plenty of trees and foliage about it, has a quaint and homelike appearance. It is estimated to build this home, exclusive of heating and plumbing, in the manner herein described, for \$5,000.

The entrance is through a liberal vestibule to a central hall with platform stairs leading up in front at the left of the vestibule and underneath an ample coat closet. There is a large window on the stair platform lighting the hall. At the right of the entrance is the main living room, extending across the end of the house.

ent when the auctioneer made the announcement, and disappointment was expressed that the sale was not to be proceeded with. It is hoped in Greenwich that the works will be opened in a few weeks' time, and will give employment to a large number of men.

The Thames Ironworks property at Canning Town, where the Thunderer was built, has been disposed of to the Great Eastern Railway whose line adjoins the site. The plant and machinery, however, will be sold by auction, and it may be taken for granted that, as far as shipbuilding is concerned, the history of the yard has come to an end.

Use for the curtains and upholstery in the living room an old English chintz, with a cream background thickly covered with a running design of the English briar rose, accentuating its color by using two little stiff-backed chairs near the open fireplace.

The house sits low to the ground and the stories are 8 feet 6 inches and 8 feet in height and the cornices brought down low. It has the broad appearance with a front facade of 43 feet, exclusive of the piazza at the right side, and a depth of 25 feet. Basement is full and complete under the entire house, the foundation being concrete and the exterior cement on walls carried down clean to the grade line. A house of this character requires ample grounds, and is well suited to a rural location and, with plenty of trees and foliage about it, has a quaint and homelike appearance. It is estimated to build this home, exclusive of heating and plumbing, in the manner herein described, for \$5,000.

The entrance is through a liberal vestibule to a central hall with platform stairs leading up in front at the left of the vestibule and underneath an ample coat closet. There is a large window on the stair platform lighting the hall. At the right of the entrance is the main living room, extending across the end of the house.

ent when the auctioneer made the announcement, and disappointment was expressed that the sale was not to be proceeded with. It is hoped in Greenwich that the works will be opened in a few weeks' time, and will give employment to a large number of men.

The Thames Ironworks property at Canning Town, where the Thunderer was built, has been disposed of to the Great Eastern Railway whose line adjoins the site. The plant and machinery, however, will be sold by auction, and it may be taken for granted that, as far as shipbuilding is concerned, the history of the yard has come to an end.

Use for the curtains and upholstery in the living room an old English chintz, with a cream background thickly covered with a running design of the English briar rose, accentuating its color by using two little stiff-backed chairs near the open fireplace.

The house sits low to the ground and the stories are 8 feet 6 inches and 8 feet in height and the cornices brought down low. It has the broad appearance with a front facade of 43 feet, exclusive of the piazza at the right side, and a depth of 25 feet. Basement is full and complete under the entire house, the foundation being concrete and the exterior cement on walls carried down clean to the grade line. A house of this character requires ample grounds, and is well suited to a rural location and, with plenty of trees and foliage about it, has a quaint and homelike appearance. It is estimated to build this home, exclusive of heating and plumbing, in the manner herein described, for \$5,000.

The entrance is through a liberal vestibule to a central hall with platform stairs leading up in front at the left of the vestibule and underneath an ample coat closet. There is a large window on the stair platform lighting the hall. At the right of the entrance is the main living room, extending across the end of the house.

ent when the auctioneer made the announcement, and disappointment was expressed that the sale was not to be proceeded with. It is hoped in Greenwich that the works will be opened in a few weeks' time, and will give employment to a large number of men.

The Thames Ironworks property at Canning Town, where the Thunderer was built, has been disposed of to the Great Eastern Railway whose line adjoins the site. The plant and machinery, however, will be sold by auction, and it may be taken for granted that, as far as shipbuilding is concerned, the history of the yard has come to an end.

Use for the curtains and