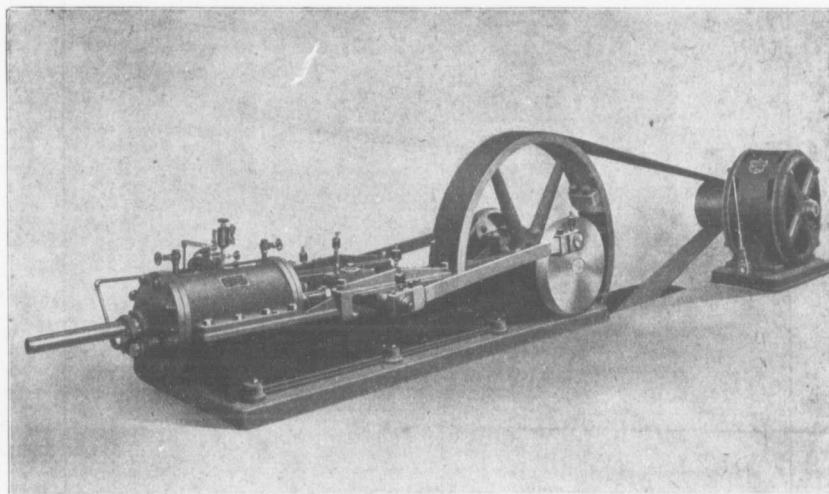


"INGERSOLL" COMPRESSORS



One of our 12¼ x 18 "Ingersoll" Air Compressors driven by one of our 50 h.p. Induction Motors and supplying power for a western quarry. Catalogue No. 75 describes and illustrates the different classes of our Air Compressors and the uses to which they are best adapted.

CONTRACTORS' PLANT

"Ingersoll" Air Compressors and Rock Drills; "Lidgerwood" Hoisting Engines and Ballast Unloaders;
"Gates" Rock Breakers; Allis-Chalmers Steam Shovels; "Bullock" Electric Motors and Generators.

ALLIS-CHALMERS-BULLOCK LIMITED

Head Office and Works: MONTREAL

District
Offices :

{ MONTREAL: Sovereign Bank Bldg.
NEW GLASGOW: N.S. Telephone Bldg.
WINNIPEG: Canada Life Bldg.

TORONTO: McKinnon Bldg.
NELSON: Josephine St.
VANCOUVER: 416 Seymour St.