

MUNICIPAL ENGINEERS, CONTRACTORS AND MATERIALS

WILLIS CHIPMAN

Hon. Grad. McGill University.
M. Can. Soc. C.E. M. Am. Soc. C.E.
Mem. Am. W.W. Ass'n.
**WATERWORKS, SEWERAGE WORKS, GAS
WORKS, ELECTRIC LIGHT AND
POWER PLANTS**
Reports, Surveys, Construction, Valuations
103 BAY STREET - TORONTO

R. E. SPEAKMAN, C.E.

A. M. Inst. C. E., 1878.

CONSULTING ENGINEER

Waterworks, Sewerage and Sewage Disposal.
Municipal Improvements.
Granolithic Pavements.
Electric Light Plants.
Drainage and Irrigation of Land.
Coal Handling Plant and Machinery.
Plans, Specifications and Estimates.
Construction and Valuations.

Canada Life Building - TORONTO

Roderick J. Parke

Am. Can. Soc. C.E., A.M. Amer. Inst. R.E.

CONSULTING ENGINEER

Hydraulic Power Development. Long Distance
Power Transmission. Steam Plants, Electric
Lighting and Power Systems. Tests
Valuations. Reports.

409-410 Temple Building, TORONTO, CANADA

Telephones: Office—Long Distance Main 3047
Residence—Long Distance North 2204
Telegraphic address: "Rodparke."
W. U. Code, Univ. Edition.

Ernest G. Hopson

Member Boston Society Civil Engineers

Waterworks, Sewerage, Power Development,
Structural Design.

**REPORTS, DESIGNS, SURVEYS AND
SUPERVISION.**

Offices: 55 Barrington Street, Halifax, N. S.
Commercial Bank Bldg., Sydney, C. E.

W. G. McNeill Thompson**CONSULTING ENGINEER**

M. Inst. C. E. M. Can. Soc. C. E.

M. Am. Soc. C. E.

Examination of Works, Reports, Water Power
Development, &c., &c.

ST. CATHARINES, ONTARIO

ROSS & HOLGATE**Consulting and
Supervising Engineers**

Waterworks, Electric Light and Power
Plants, Structural Work, Reports,
Estimates, Arbitrations.

77 ST. JOHN ST. - MONTREAL
McKINNON BLDG. - TORONTO

Percival W. St. George

Mem. Inst. C. E. London, England.
Mem. Can. Soc. C. E.

CONSULTING ENGINEER

Railway, Sewerage, Water, Hydraulic,
Expert and Arbitrations, &c.

BELL TELEPHONE BLDG. MONTREAL
Telephone, Main 4717.

JAMES C. KENNEDY

MEM. CAN. SOC. C.E.

CIVIL AND HYDRAULIC ENGINEER

Examinations, Reports, Plans, Estimates,
Supervision of Construction, Water
Powers, Water Works, Sewerage, etc.

P. O. Box 710, Owen Sound, Ont., and
777 Dorchester Street, Montreal, Que.

Please mention THE CONTRACT RECORD
when corresponding with advertisers.

THE PHOENIX BRIDGE & IRON WORKS, MONTREAL

GENERAL STEEL CONTRACTORS

Large Stock I BEAMS, CHANNELS, ANGLES, TEES, ZEES and
PLATES always on hand.

Portland Cements...

HIGH GRADE GERMAN BRANDS FOR GRANOLITHIC
AND ARTIFICIAL STONE SIDEWALKS.

Sewer Pipes, Best English Cements. Best Belgian Cements
Culvert Pipes, &c. **W. McNALLY & CO., Montreal**

W. & F. P. CURRIE & CO.

345 St. James St., Montreal

Importers of

SEWER PIPES,

CULVERT PIPES, ETC.

VENT LININGS,

FLUE COVERS,

FIRE BRICKS,

FIRE CLAY,

WHITING.

PORTLAND CEMENTS,

HIGH GRADE ENGLISH

" " GERMAN

" " BELGIAN

PLASTER OF PARIS

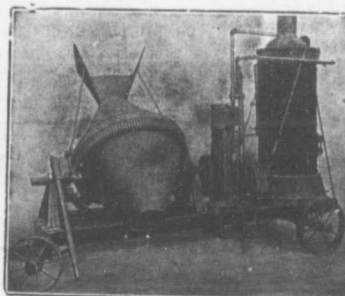
BORAX,

CHINA CLAY.

**SMITH
CONICAL
CONCRETE
MIXER**

18

Different
Sizes and
Styles.



Mixes in Batches. Discharges by Tilting while
Running. Mounted on Skids or Trucks.
Catalogue on Application.

— SOLE CANADIAN AGENTS —

**W. H. C. Mussen & Co., 763 Craig St.,
MONTREAL**

**CANADIAN
CONTRACTOR'S
HAND-BOOK**

and
Estimator

Third Edition

Price \$1.50; to
subscribers of
the Canadian
Architect and
Builder, \$1.00.

SEND FOR A COPY

C. H. Mortimer
Publishing Co.
Toronto.

The KERR ENGINE COMPANY, Limited**PUMPING MACHINERY**

HYDRANTS and VALVES
Are our Specialty

Don't fail to write us for Catalogue and prices.

WALKERVILLE, - ONTARIO

