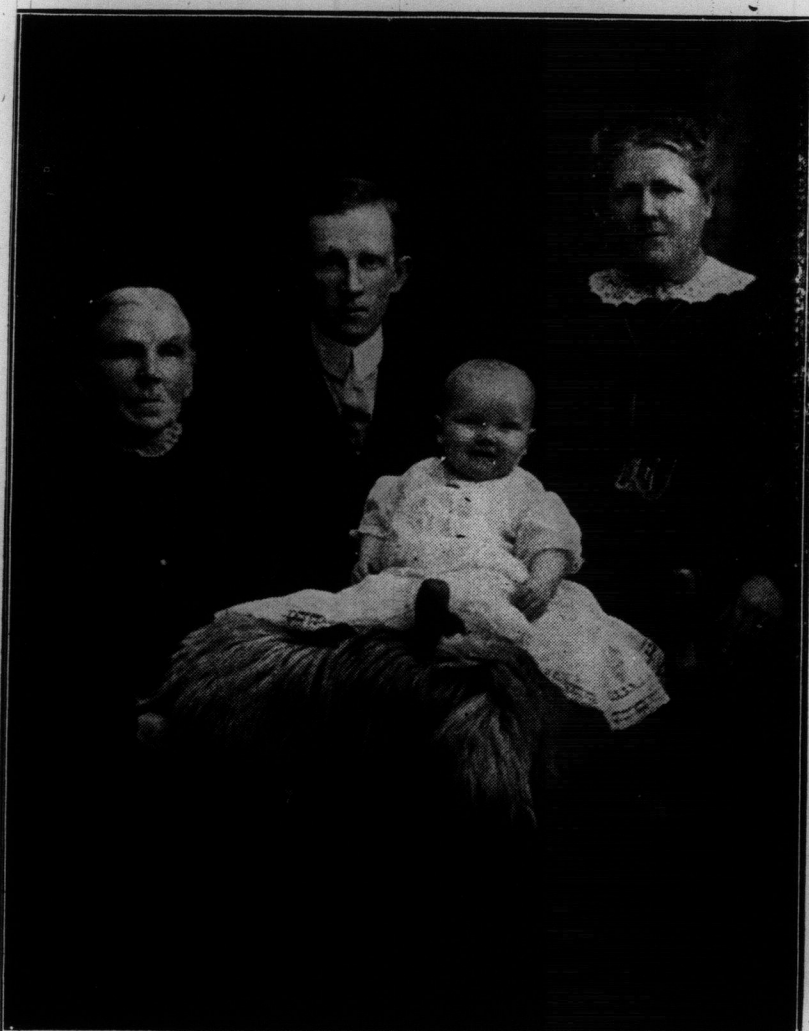
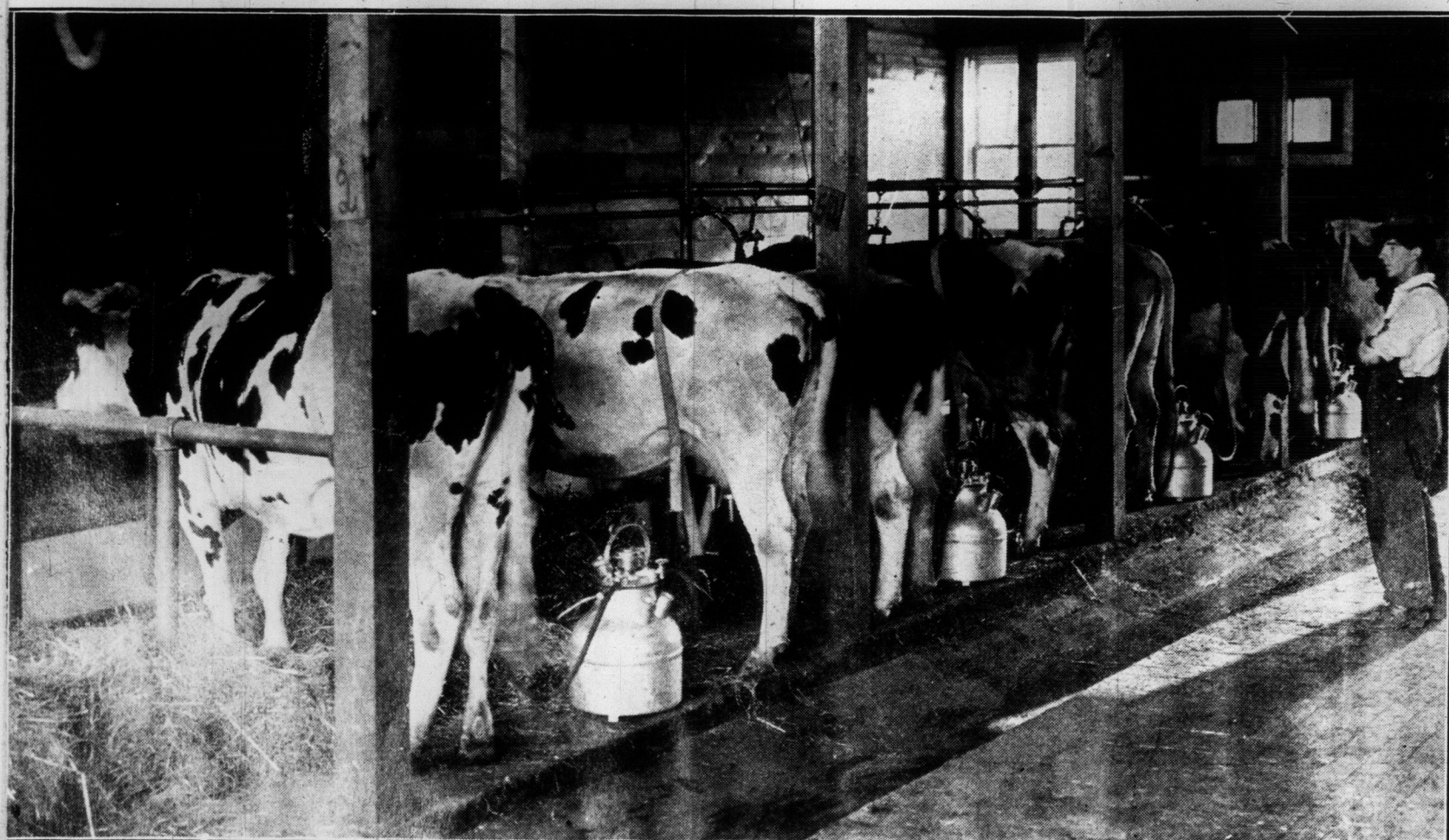


WM. NEWMAN, M.I.N.A.
Mr. Wm. Newman, gen. supt. Polson Iron Works, "steel ship builders" is just received his diploma as member of the Institute of Naval Architects, granted at the annual meeting held April 6, in London, England.



FOUR GENERATIONS—MRS. F. McLAREN, MITCHELL, ONT.; MRS. A. MCKAY, 238 AUGUSTA-AVE.; MR. ROBERT MCKAY, 669 MANNING-AVE.; MASTER CURRIE MCKAY, AGE 1 YEAR.



ANOTHER USE FOR ELECTRICITY.
Only the most up-to-date methods are used at the Canadian Pacific Railway's demonstration farm at Strathmore. Even the old method of milking the cows by hand has been revolutionized, in the effort to show that scientific farming pays.



Agents in Every City and Town in Canada

BENCH-TAILORED BY

The Lowndes Company, Limited

142-144 West Front Street, Toronto

Still in Fancy.

"Didn't you tell me last summer that you were going to build a concrete house?" asked Miggles.

"Yes," answered Gluggins, "but after looking over the architect's estimates I left the house in the abstract."—Life.

Clever Solution.

Speaking of the process of becoming engaged, the man is by no means the fool he acts like, or the woman the fool she feels like, but something of the sort seems to be necessary in order to induce them to rush in where angels fear to tread.—Puck.

What She Could Do.

Mistress (to newly-arrived Norwegian girl)—Can you cook?
Girl—Naw.
Mistress—Can you do washing?
Girl—Naw.
Mistress—Can you wait on the table?
Girl—Naw.
Mistress—Well, what can you do?
Girl—Ah can milk reindeers.



JOHN AND HERBERT MONTGOMERY OF RIVERDALE-AVE.

A Central African Tree.

A remarkable tree has been discovered about the region of Lake Chad. Its power of increase in every way is remarkable, says The London Globe. In a few months an extensive tract of land, we read, became an impenetrable forest. In one season it is said to grow to the height of from four to five metres; in other words, from thirteen to sixteen feet.

Its foliage is said to resemble the mimosa, and its branches are thorny. The wood can be cut into planks, and the natives work it up into canoes. The Tilho mission has utilized the wood for making tables and doors.

Fooled the Coroner.

Gyer: Breeping stepped on the track in front of a locomotive going at the rate of 50 miles an hour this morning.
Myer: Poor fellow! When are they going to have the funeral?
Gyer: Oh, it has been postponed indefinitely. You see the locomotive was running backward at the time.—Chicago News.



ED LEE WROTHER WITH "GINGER GIRLS" AT THE GAYETY THIS WEEK.