



Please mention CANADA LUMBERMAN when corresponding with advertisers.

## OILS

Manufacturers High-grade Cylinder, Machine and Sawmill Oils.

### Calypsol Grease

for Sawmill Purposes a Specialty. Our products are made from finest Pennsylvania stocks. We solicit your correspondence.

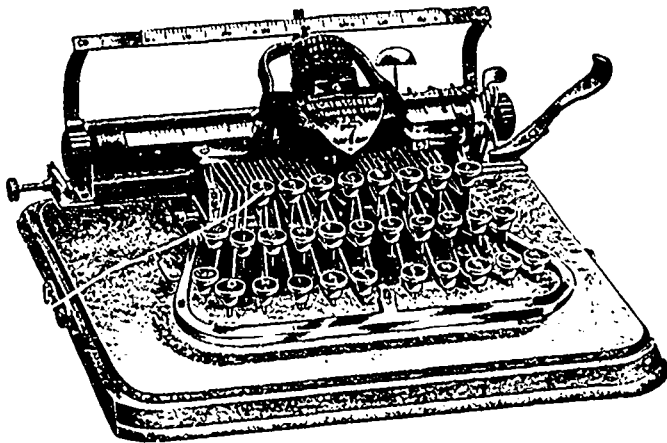
St. John St. MONTREAL. Commercial Oil Co., Hamilton, Ont. Offices and Works: Manchester, Eng. Hamburg, Germany. Newark, N. J. Chicago, Ill.

## SCRIBNER'S LUMBER AND LOG BOOK

A handy book for Lumbermen. Gives Correct Measurements of Scantlings, Boards and Planks; Cubical Contents of Square and Round Timber, Doyle's Rules, and much other practical information.

PRICE 35 CENTS.

Address: The Canada Lumberman TORONTO, ONT.



Model No. 7, \$50.00 Model No. 5, \$35.00

Write for particulars to

H. W. Knack, Sales Agent, Bay City, Mich.

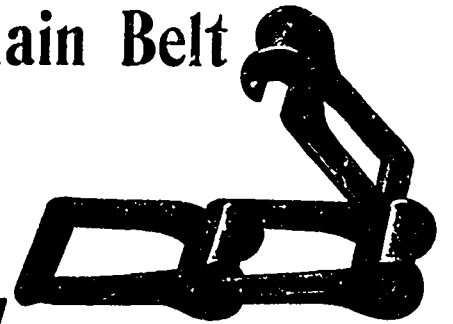
A STANDARD MACHINE that will do as much work in a neater and better manner than any machine on the market and costing twice the money. For manifolding and mimeographing it has no equal. Has interchangeable type and line spacing, visible writing, perfect and permanent alignment, is simple, durable and portable.

## Detachable Chain Belt

—AND—

## CONVEYING

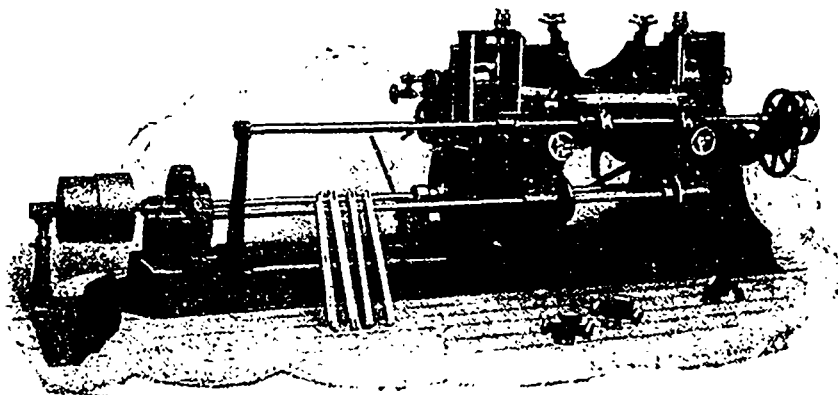
## MACHINERY



William R. Perrin & Company

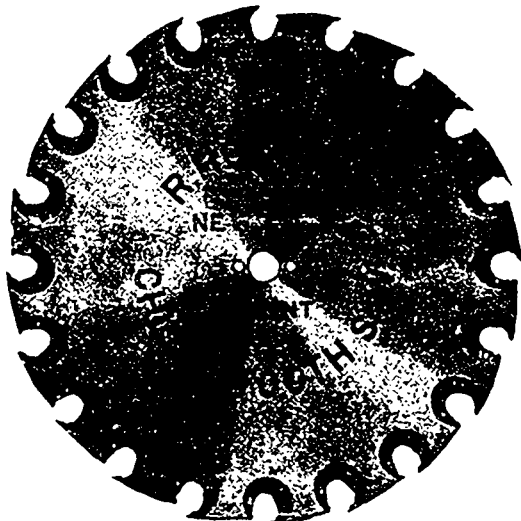
TORONTO, CANADA.

The first of its kind on the market. New and original and first introduced by us  
**E. B. HAYES MACHINE CO., Oshkosh, Wis.**



When a new and improved machine that has great merit in it like this one, is put onto the market, often times other machinery manufacturers will recognize the fact that it will be a good seller and they will try and start in to copy, of course providing they can do it. We expect it may be the case with this machine, but we know that all the mill men purchasing machines will want the Original, for many mill men in the past have met with great disappointment in buying copied machines. Write for full information.

OVER 35,000 IN USE IN EVERY KIND OF TIMBER



THE ONLY SUCCESSFUL INSERTED-TOOTH SAW.

# THE TWENTIETH CENTURY SAW

Our Chisel-Tooth Saw is adapted to all kinds and conditions of sawing, and does equally well in hard or soft woods, winter or summer, large or small mills.

It increases the output of the mill, requires less power and makes better lumber at less cost than any other saw.

**BEWARE OF IMITATIONS.**

THE GENUINE IS MADE ONLY BY

**R. HOE & CO.**

504 to 520 Grand Street, NEW YORK, U. S. A.

Catalogues with Prices and Further Particulars Sent on Application.