

EATON'S SEMI-ANNUAL SALE

The Sale Moves On Apace With New Attractions Every Day

Surely Never Were Such Coats Procurable at \$12.50--Exactly Half the Regular Price

In Chinchilla Co'h, Ratine and Reversible Cloakings, Including Some Beautiful Modes in black

ONLY SUPERLATIVE LANGUAGE does justice to this Saturday offering of coats—one of the most remarkable price-attractions yet presented in the great Sale now in progress in the Cloak Department. Six different styles comprise the selection, one line representing a collection of individual models in all black. To describe them:—

Group of immensely smart designs in fashionable black fabrics—duvetyne, ratine and soft fancy coating, made in drop-shoulder and kimono effects and lined throughout with black satin, the majority having collars and cuffs of black velvet. Among them are a few of the well-known Printzess coats. Saturday, half-price, \$12.50.

Splendidly tailored coats in a soft heavy black coating, with reverse side of plaid—trim-fitting models with drop-shoulder, the popular peg-top effect achieved by slight fulness pleated down flat below the hips at either side—collars of black velvet. Semi-annual Sale, half-price, \$12.50.

Coats in a fine blanket cloth, in navy blue, brown, tan and green, with reverse side of black, and yoke lining of black satin, collars and buttons of black velvet. Semi-annual Sale, half-price, \$12.50.

Coats in black ratine with undertone of blue, brown or grey, made in drop-shoulder effect with black velvet collar and cuffs, rounded fronts, and lining to the waist. Semi-annual Sale, half-price, \$12.50.

Coats in Worumbo chinchilla—the best cloth of the kind on the market—in grey, tan, brown and taupe, the plain tailored design showing a shaped band around the foot, and a facing of velvet in the collar. Semi-annual Sale, half-price, \$12.50.

Coats in a very fine, short pile zibeline, in light brown, seal brown, navy blue and grey, fashioned in kimono shoulder style with velvet collar, and lined throughout with satin. Semi-annual Sale, half-price, \$12.50.

—Third Floor, James St.

Misses' Smart Winter Coats Less Than Half-price

THE MAMMOTH SALE OF MISSES' COATS brings this 9 o'clock shopping attraction for Saturday. Three new styles in heavy tweed and diagonal cloakings at less than half-price. Loose-fitting, comfortable garments they are, with slightly cut-away fronts and plush, velvet or plain collars. Two styles button up close to neck, the third has wide revers. Colors include tans, browns and greys. Sizes 32 to 36 bust. Semi-annual Sale, \$5.85.

These also are important "Specials":—

Misses' serge, one-piece dresses, neat Winter styles, three-quarter or long sleeves, high waist, close-fitting, turn-down silk collars. Colors, navy, brown, black and white, check and all-black. Sizes 32 to 36 bust; skirt lengths 33 to 38 inches. Semi-annual Sale, \$3.50.

Misses' skirts in serges and mixtures; two good styles, fancy panel front, gathered backs. In greys, brown, navy and black. Length 31 to 38 inches; waist measure 22 to 25. Semi-annual Sale, \$1.95.

Remarkable Values in the Girls' Coat Sale

Coats of warm chinchilla, lined all through in dark green, grey, navy or red. Sizes for girls 6 to 14 years. Semi-annual Sale, \$1.95.

Girls' coats of cheviot or chinchilla; loose-fitting plush collars and cuffs, deep yoke linings of self; colors include browns, navy, dark green and reds. Sizes 6 to 14 years. Semi-annual Sale, \$3.95.

Girls' coats in about six styles, in heavy, all-wool Winter materials and well lined to the waist. Have close-fitting collars, and some have plush or velvet trimming. Colors, browns, navy, and reds. Sizes for girls 6 to 14 years. Semi-annual Sale, \$4.75.

—Third Floor, Yonge St.

These Remarkable Price Reductions in the Semi-Annual Sale of White Wear

Dainty Lingerie for Women and Girls Specially Priced for Saturday Selling

KNOWING THAT JANUARY always abounds in special values in white wear, perhaps these are just the items for which you have been watching:—

Corset covers in fine nainsook, the armholes and necks finished with edging and insertion of fine Valenciennes run with pink satin ribbon. Semi-annual Sale price, 98 cents each.

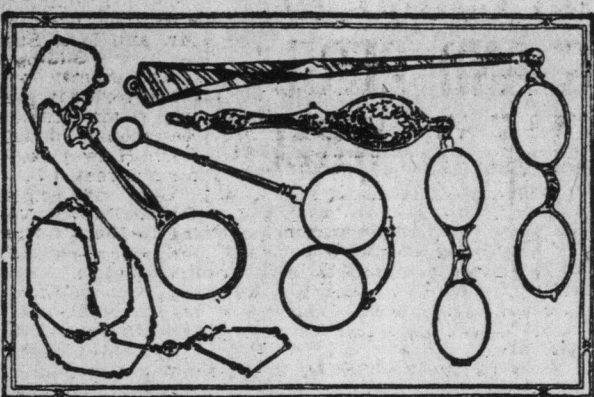
French hand-made, hand-embroidered drawers, some in wide umbrella style, others with embroidered and scalloped frill. Semi-annual Sale price, 98 cents a pair.

Princess slips in fine cotton, with deep flounce of lawn edged and inserted with Swiss embroidery, the latter being applied effectively at the neck and armholes. Semi-annual Sale price, \$2.55.

Petticoat in pale blue lawn with deep frill of blue and white embroidery. Semi-annual Sale, half-price, \$2.25.

For girls of 10, 12 and 14 years, charming little princess slips in fine nainsook with finely tucked frill edged and inserted with Cluny lace, the necks edged with the same lace run with pink washable ribbon. Semi-annual Sale price, \$1.95.

—Third Floor, Queen St.



The Fashionable Lorgnette at Half-price

STOCK-TAKING IS RESPONSIBLE for another interesting clearance on Saturday—a collection of high-grade lorgnettes being reduced to half-prices. The selection includes the most artistic and best approved designs in 14k. gold, sterling silver, silver gilt, and gunmetal, some handsomely engraved, others in filigree effect. The handles are of various lengths. Semi-annual Sale, half-price, ranging from \$1.75 to \$13.25.

—Optical Department, Third Floor, James St.

T. EATON & CO. LIMITED

You were Inquiring

Snowbird—I suppose you sat with your head under your wing, poor thing, on Tuesday, but I trust that the weather has warmed up sufficiently again to permit your usual glance at the morning newspaper. Here is the information you seek:

(1) Shopping bags priced in the neighborhood of \$2.00 include a smart little design in real seal, a long, narrow shape, with frame of German silver, more lining and small change purse inside. This is \$1.95, a similar bag in pin seal with frame in gunmetal finish being available at the same price. A more conventional style in wainscot grain with a frame in silver finish is also \$1.95.

(2) The only marabout mount procurable at the present moment is about ten inches high and priced at 30 cents. It possesses the advantage of being washable.

(3) A centerpiece in natural color linen, 18 inches in diameter, is 12½ cents; one 27 inches being 20 cents. The amount of embroidery silk required would, of course, depend upon the amount of work in the design selected. Silks are 5 cents per skein.

(4) The nainsook in ordinary lace-trimmed lingerie is not suitable for embroidery. Moreover, the majority of pieces are inserted with lace in such a way that would put further ornamenting out of the question. What are sold for your purpose are the semi-made garments, a night gown stamped ready for embroidery, with the material for working being featured, complete, at 98 cents, and a princess slip at \$1.25. The adding of Valenciennes lace would be an easy matter for you.

(5) China jardinières are to be had from 75 cents upward. If you will let us know the size and color you want, something nice will be found for you at the price you wish to spend.

Enquirer—"Yes" to each of your queries. The dictionary stand can be supplied at \$5.00, the lower portion of metal and the support for the book of wood. The general appearance is very like the stands an orchestra uses for the music books—more substantial, of course. Neckbands for men's shirts are 5 cents each. But remember to state when ordering whether you want them to open in the front or the back.

"Elizabeth"—Only lately I've been reading your adventures in Rugen. But, do you know, I think I like you better within the peaceful precincts of your own German garden. Those that jump for your desk mean that we're to hear more of your exploits. We shall have great pleasure in hurrying it on to you. Would you prefer candles arranged for electricity which can be slipped into any candlesticks—they are \$2.00 each—or an artistic little wicker lamp with shade of Futurist silk, complete, at \$3.00?

As for the corduroy cushions, if they are merely soiled and not stained, you can clean them by simply rubbing the pile—the wetting it through with soap and water, wiping it off with clear water. For the purpose a regular carpet soap would be best—such as "H and H" at 15 cents a cake.

The Scribe



ALARMING CONDITIONS FOUND IN SEVERAL TORONTO SCHOOLS

Inspector's Reports Show That Poor Ventilation, Lack of Accommodation and Corresponding Defects Endanger Health of Pupils.

(Continued From Page 1.)

The stairways have been in an incomplete state for nearly two years. The school, strong and well coming from the city, is in a state of alarm. The corresponding danger to the health of the pupils.

The board of education is requested to take into consideration the above and to purchase a more suitable site and building a modern building as soon as possible.

ALLAN SCHOOL—Open a class for advanced detective children.

EDFORD PARK SCHOOL—Grade and enclosure grounds. Enlarge school by 100 seats.

COTTINGHAM STREET SCHOOL—Entry to basement from yard.

DAYVILLE—Enlarge grounds to the west. Enclose yard. Enlarge school.

DUKE STREET SCHOOL—Enlarge

DEER PARK SCHOOL—Enlarge grounds to the north.

GEORGE STREET SCHOOL—Enlarge grounds to the south and east.

HOSPITAL SCHOOL—Secure a class room.

HESTER HOW SCHOOL—Overhaul the heating system. Construct an open-air class room.

ISLAND SCHOOL—Enlarge yard. Furnish soil for grass and garden plots.

JEFFER KETCHUM SCHOOL—Construct a modern school building.

JOHN FISHER SCHOOL—Grade and enclose the grounds. Plant elm and maple trees on boulevard. Widen the sidewalk from the street to the building.

LEE SCHOOL—Construct an entrance from George street. Drain the yard so as to dry the basement. Fit up the vacant room for domestic science.

PARK SCHOOL—Enlarge grounds and erect a modern building.

ROSE AVENUE SCHOOL—Enlarge grounds and erect an artistic workshop on the grounds for part-time classes.

VICTORIA STREET SCHOOL—Se the building and grounds and the Duke street, George street and Hester How schools.

Inspector Chapman's Report.

PALMERSTON AVENUE SCHOOL—Installation of local phone system. Enlarge kindergarten room.

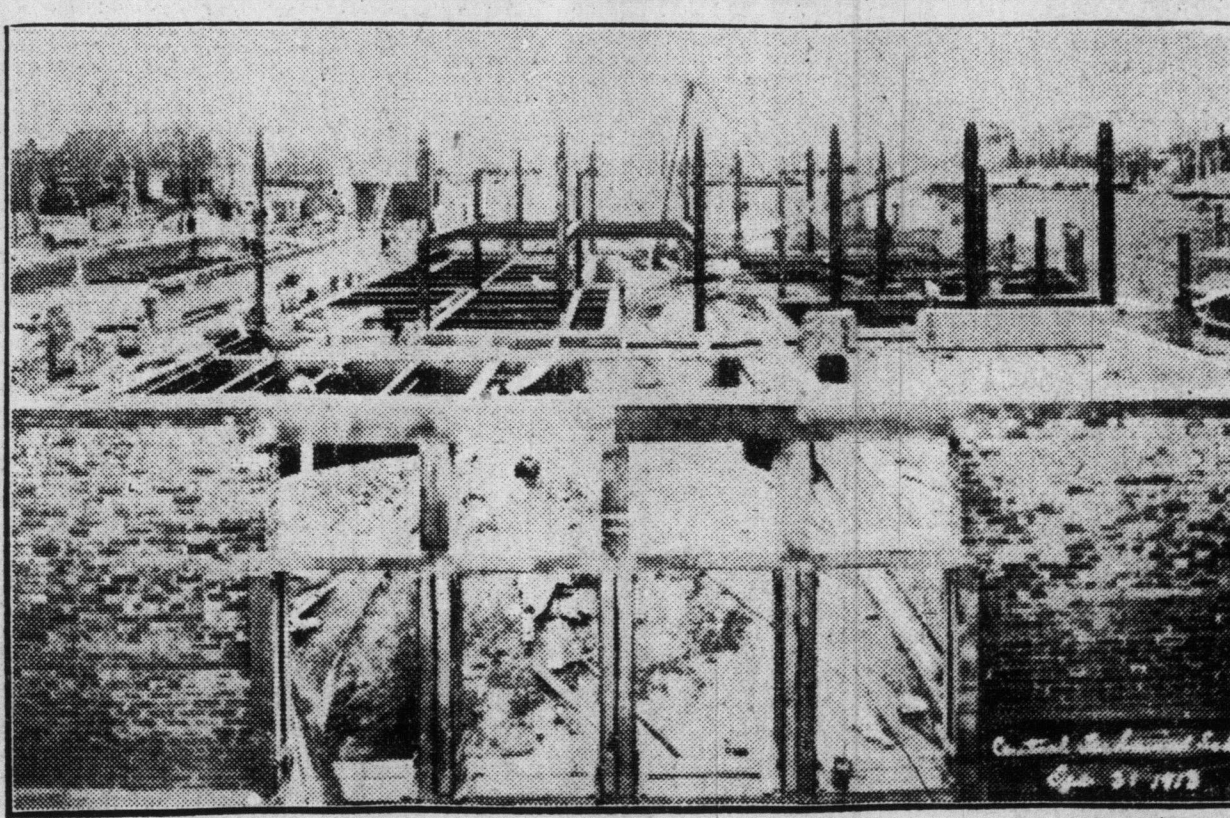
ROOM and toilet rooms for teachers.

NIAGARA STREET SCHOOL—Modern closet accommodation. Filing cabinet for principal. Kindergarten windows made to open from bottom for ventilation.

KING EDWARD SCHOOL—Windows made to open more easily. Repairs and improvements in domestic science room.

LANDOWNE—Installation of electric light and a local phone system. En-

NEW CENTRAL TECHNICAL SCHOOL



This photograph shows the progress of the work on the \$3,000,000 building on Borden st.

larged playground. Enlarge manual training room and apply to the education department to equip with lathes.

RYERSON—Increased closet accommodation for pupils. Lunch room, private room and lavatories for teachers. Overcome the noise and vibration caused by the fan and perhaps install a motor to run fan. Screens for radiators and commercial desks.

BRANT STREET SCHOOL—Electric light fixtures (wiring is in); several rooms have poor light. Bell tower to be repaired that bell may be used, as many families in this neighborhood have no clocks.

HURON STREET SCHOOL—Installation of electric light and placing of at least one bulb in each dark cloak room. New tables for teachers in twelve rooms. Windows in the kindergarten room should be made to work easier; too much to expect women to work such heavy

McCAUL SCHOOL—Increased accommodation, as there are classes in the basement and basement, and an afternoon kindergarten. Co-operation with Neighborhood House to give McCaul school a more practical course in house keeping, including cooking and the making and mending of garments.

Inspector Elliott's Report.

CRAWFORD STREET SCHOOL—The walls of class rooms and halls should be kalsomined.

DEWSON STREET SCHOOL—The basement floors should be concreted. A wardrobe should be placed on the west wall in the office.

KENT SCHOOL—Some action should be taken to alleviate the disturbance caused by vibration of fan in basement.

GRACE STREET SCHOOL—Better heating of the principal's office and teachers' room. Larger and more sanitary accommodation for special class, a present at Grace street.

ALEXANDER MUIR SCHOOL—Three other additional rooms required.

GIVEN STREET SCHOOL—Improvement of drainage of southern part of yard. Office for medical officer and nurse should be provided in north end of upper hall, by removal of partition between cloak rooms and cloak room. Accommodation can be provided in the rooms of classes affected. A school telephone system service should be installed. Room blackboard should be provided for 18 Junior commercial.

DOVERCOURT SCHOOL—Wooden floors in basement replaced by cement. New blackboards in room 5, and new composition blackboards in all rooms. Remove cupboard from ladies' retiring room and cover floor with linoleum.

JOSEPH WORKMAN SCHOOL—A bath and taps should be provided in upper hall for nurse. Provision for teaching domestic science and manual training.

PYNE SCHOOL—The new building on Regal avenue should be enlarged to contain at opening at least seventeen rooms. Otherwise portable buildings must be resorted to.

ESSEX STREET SCHOOL—Establishment of dental clinic in old office. Provide a room for backward pupils by partitioning east end of hall on third floor. Connect all rooms of new building with electric heat register in basement.

GENERAL—ALL SCHOOLS—Supply of maps.

Inspector Bruce's Report.

BALDWIN BEACH SCHOOL—The cesspool should be emptied often. There should be more closet accommodation for pupils. Some rooms have no blackboards.

COLEMAN AVENUE SCHOOL—The outdoor closets should be cleaned often. The water should be carried away at once from the building after rain falls. More plank is needed in the yards for lining.

EARL GREY SCHOOL—The overcrowding in the school might be overcome by a new building on the premises.

KEW BEACH SCHOOL—Office room accommodation could be had by building above the porch at the back entrance.

KIMBERLEY STREET SCHOOL—The cesspools should be emptied often. There should be a doorway in the middle wall of the basement. The kindergarten enlargement is insufficient. There is no necessity for a dental chair.

MORSE STREET SCHOOL—The need of enlarging the boys' yard and closing the lanes on the north and east.

NORWAY SCHOOL—The principal should have special help.

QUEEN ALEXANDRA SCHOOL—The special class should be discontinued. The kindergarten room should be enlarged. The plank walk in front should be removed.

RODEN SCHOOL—Porches should be built over the outside entrances to the basement. As there is not enough fall for the drain to the sewer on Adelaide avenue, a second drain should connect with the new sewer on the street west of the school. The work of the caretaker in keeping clean the large halls and stairways should be issued.

SIMCOE PARK SCHOOL—There should be close board fences to separate the boys and girls going to their respective closets. (A single board partition between the closets is not sufficient separation.)

ALEXANDRA INDUSTRIAL SCHOOL—This school is well conducted.

AYRSHIRE BREEDERS.

The annual meeting of the Canadian Ayrshire Breeders' Association will be held on Thursday, Feb. 5, in the Prince George Hotel.