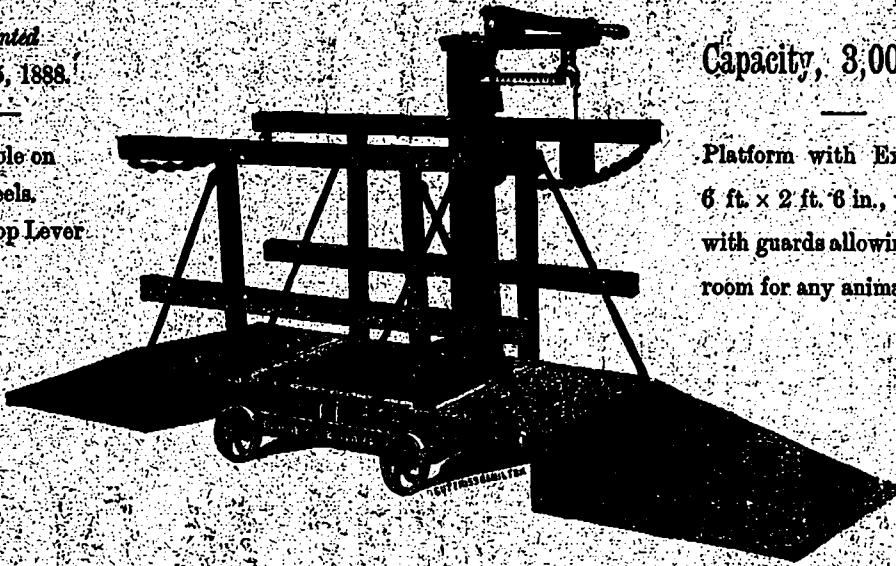


# GURNEYS' FARM & STOCK SCALE.

Patented  
April 25, 1888.

Portable on  
Wheels.  
With Drop Lever.



Capacity, 3,000 lbs.

Platform with Extensions  
6 ft. x 2 ft. 6 in., provided  
with guards allowing ample  
room for any animal.

Designed especially to meet the wants of Farmers and Stock Raisers.

Made very strong, of the best material and finish. So constructed that Extensions and Guards can be  
PRICE uncoupled when desired, and Scale used without them. MODERATE.

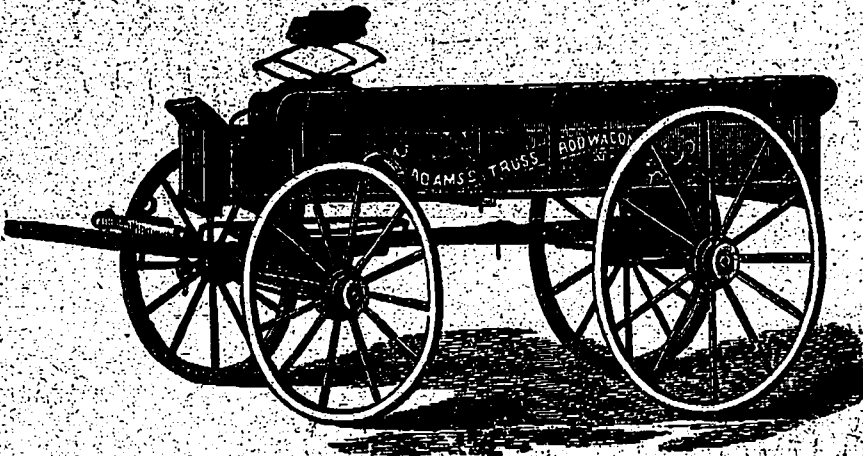
See this Scale at your nearest Hardware Merchant; or write direct to Makers.

MANUFACTURED ONLY BY

**GURNEYS' SCALE CO., HAMILTON, ONT.**

# THE ADAMS' TRUSS ROD WAGON.

Manufactured only by



ADAMS & SON,  
PARIS, ONT.

These celebrated wagons are so well known throughout the entire Dominion that it seems almost superfluous to enumerate their merits. THE TRUSS ROD used on this wagon is superior to any other so-called Truss Rod, because it is the only one that passes through the Skeln, thus strengthening the axle without adding to the weight. THE HIND CROUCH is much longer than is usually found on any other wagon, thus strengthening the reach and causing the hind gear to run much steadier. THE TURN-OVER SEAT is something appreciated by all farmers when taking heavy loads of bagged grain; it is fitted with Iron Risers, Corner Plates, Seat Pockets and Front Hinges. Without doubt, the ADAMS TRUSS ROD WAGON is the Strongest, Best Proportioned, Best Made, Best Finished, and the Easiest Running Wagon in Canada.

WE ALSO MAKE TO ORDER,

Low-Wheeled Farm Trucks. Low-Wheeled Logging Trucks.

One and Two-Horse Lorries.

Manitoba Sleighs and Ontario Bob-Sleighs (with Patented Wrought-Iron Knees).

# J. L. Dunn & Co.,

MANUFACTURERS OF ALL KINDS OF

## VARNISHES,

JAPANS, HARD OIL FINISHES,  
LIQUID DRYERS, &c.

**WINDSOR, - ONT.**

Correspondence Solicited.

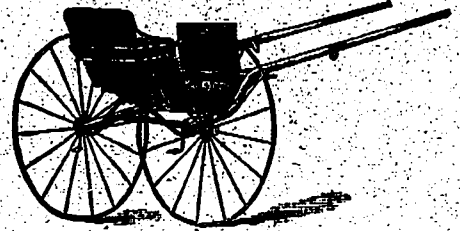
Mention this Paper.



## BOYS FOR FARM HELP.

The managers of Dr. BARNARD'S HOMES desire to obtain good situations with farmers throughout the country for the boys they are sending out from time to time from their London Homes. There are at present nearly 3,000 children in these Homes, receiving an industrial training and education to fit them for positions of usefulness in life; and those who are sent to Canada will be selected with the utmost care, with a view to their moral and physical suitability for Canadian farm life. Farmers requiring such help are invited to apply to MR. ALFRED B. OWEN, Agent Dr. Barnard's Homes, 214 Farley Avenue, Toronto.

**J. W. BROWNELL,**  
(Successor to BROWNELL & FARLEY)

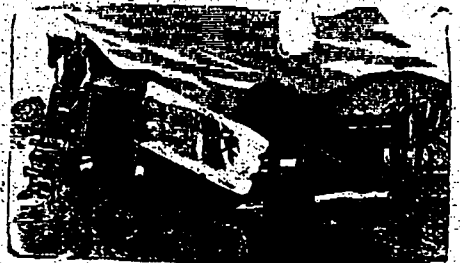


Manufacturer of Fine Carriages, Spring Wagons, Phaetons, Road Carts, and Light Speeding Carts. Wholesale and Retail.

ST. THOMAS, ONT.

Mention this Paper.

## THRASHING MACHINES AND HORSE POWERS (ONE, TWO, AND THREE HORSE.)



Guaranteed to be "the best" Truss Horse-power Threshing Machines made, and takes the lead wherever introduced.

AGENTS WANTED.

JOHN LARMONTH & Co., Manufacturers,  
POINT ST. CHARLES, MONTREAL, Q.

E. G. PRIOR & Co., Agents, Victoria, B.C.  
W. F. BURDITT & Co., Agents, St. John, N.B.  
G. A. LE BARON, Agent, Sherbrooke, Que.



Every Stable should have  
Peerless Hoof Ointment.

ROGERS' PEERLESS MACHINE OIL is specially manufactured for Farmers' Machinery, and excels in all the qualities necessary for Farmers' use.

## BUNTIN, REID & CO.

29 WELLINGTON STREET WEST,  
TORONTO,

Wholesale Stationers.

Envelope and Blank Book Manufacturers.

PAPER MANUFACTURERS AND DEALERS.

Mills at Valleyfield, on the River St. Lawrence.

VISITORS TO TORONTO should not fail to call at THE WHITE BUILDING, 126 King Street East, if they need any vehicle for the road or farm.