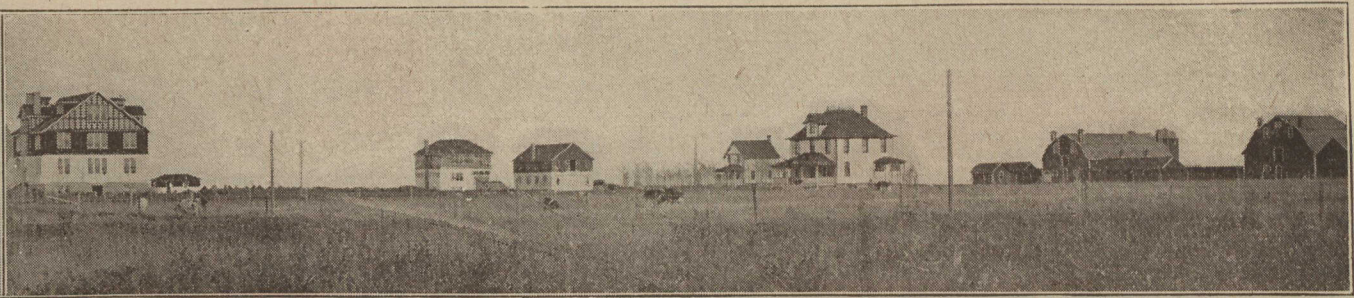




PROVINCE OF ALBERTA



Edmonton, December 25th, 1917

TO THE FARMERS OF ALBERTA

THERE SHOULD BE A FEELING of gratification on the part of the Alberta farmer this year. In the Spring he was asked to increase his output of foodstuffs by every means available; to plant a greater acreage and to increase the production of each acre, as far as possible.

HE WAS ASKED TO DO THIS when the cost of labor, of feed and seed was higher than ever he knew it before. And he was asked to so increase his output in spite of these handicaps--which he did.

THE DOMINION FOOD CONTROLLER is now most emphatic in his warning that the shortage of foodstuffs is in danger of menacing the efficiency of the fighting force of the Allies' army; and that the production of wheat and meat products is a prime necessity to the winning of the war. It then becomes the duty of the agricultural forces of Canada to produce and conserve, for use across the Atlantic, the maximum amount of wheat and to convert all our coarse grains into meat for export, and our farming operations should be carried on with this duty and this purpose in mind.

THE LABOR PROBLEM will be more acute next Spring than it yet has been, and farmers would do well to make an effort to keep men employed during the Winter months upon a twelve months engagement plan, so as to be ready for work in the Spring. There will be little doubt but that the price of the crop will be adequate to cover the extra cost of production, so that the farmer is reasonably sure of reward for his effort in a cause that calls for sacrifice, and we confidently hope that Alberta agriculture will make an effort in 1918 worthy the traditions of the tillers of the soil and of the cause for which our sons are fighting in Europe.

HOWEVER, WITH MORE CAPITAL to increase farming operations and an increasing demand for everything that can be produced, we do not expect you to in any way discount your previous record in the coming year, but under our demands again enlarge your output beyond any former year.

THE SPLENDID RESULTS from your farming operations, during the past three years, has greatly increased the demands for our lands.

IMMIGRATION OF UNITED STATES FARMERS into Alberta is greater than at any time in the last four years.

DURING THE FIRST TEN MONTHS of the present year, immigration returns show over 100% increase, and 200% more than 1915 figures.

SPECIAL EFFORTS are being made to encourage immigration in order to make up for the many thousands of able-bodied men going overseas in the service of the Empire.

WE INVITE THE CO-OPERATION of all in this work; the Publicity Department has several publications which give correct information relating to homestead and pre-emption lands, also latest maps of the Province; these are supplied free to all who will write for them. Send the names and addresses of a number of prospective settlers to the Department, and a supply of literature and maps will be forwarded to them direct.

Yours faithfully,

Duncan Marshall

Minister of Agriculture.

