

Palace Steamer CHICORA.

In connection with New York Central, West Shore and Michigan Central Railways the CHICORA will leave Yonge Street Wharf at 7 a.m. and 2 p.m. for

NIAGARA & LEWISTON,
Connecting with express trains for
THE FALLS, BUFFALO, NEW YORK

And all points east and west.
As steamer connects DIRECT with above roads, passengers avoid any chance of missing connections. Choice of rail or steamer from Albany.

**1887. NIAGARA FALLS, 1887.
BUFFALO, NEW YORK,**

And all points East, ST. CATHARINES and all Stations on Welland Division, daily at 7.15 a.m. and 3.40 p.m., from Geddes' Wharf, foot of Yonge Street, by Palace Steamer

EMPRESS OF INDIA

Giving seven hours at the Falls and five and a half hours in Buffalo, and home same day.

Lowest rates; through cars; no unpleasant transfers. Family tickets for sale at low rates. Excursion Committees, come and see us before engaging elsewhere. For tickets and all information apply to all G. T. R. and Empress of India ticket offices, or on board steamer.

Avenue Livery & Boarding Stables.

Horses, Hacks,
Coupes and Buggies
OPEN DAY AND NIGHT.

Stable & Office, 452 Yonge St.

G. E. STARR, PROPRIETOR,
Telephone 3204.

HERR PIANO CO.

THE BEST IN QUALITY AND TONE,
AND THE CHEAPEST.

For Sweetness, Brilliancy, Power, Action, and Durability are unexcelled. Seven different styles to choose from. Purchasers will do well to examine our stock, or send for illustrated catalogue and price list, before going elsewhere.

HERR PIANO CO.,

MANUFACTURERS,

90 to 94 DUKE ST., TORONTO.

OFFICE AND WAREHOUSES:

47 Queen St. East, Opp. Metropolitan Church.

I HAVE FOUND THAT
EDWARD LAWSON'S

SIGN OF THE QUEEN,

93 KING STREET EAST,

IS THE BEST PLACE TO BUY

Pure Teas and Coffees

Also Pure Confectionery, Wedding Cakes, Etc.

ALWAYS ASK FOR

ESTERBROOK STEEL PENS



Superior, Standard, Reliable.

Popular Nos.: 048, 14, 130, 135, 161.

For Sale by all Stationers.

NORTH AMERICAN LIFE ASSURANCE COMPANY.

HEAD OFFICE:

22 to 28 King Street West, Toronto, Ont.

HON. ALEX. MACKENZIE, M.P., President.
HON. A. MORRIS, J. L. BAIRIE, Esq., Vice-Presidents.

Full Government Deposit for Security of Policy-Holders.

During the year 1,355 applications for \$2,722,450 were received, upon which were issued 1,259 policies for \$2,520,950, and seven policies for \$16,350, which had lapsed for non-payment of premium, were revived. This is a volume of new business amounting to nearly \$60,000 over that of any former year, and sixty per cent. in excess of that done by any other Canadian company in the same period of its history.

ABSTRACT OF REVENUE ACCOUNT AND BALANCE SHEET.

Income for the year 1886.....	\$194,249 39
Expenditure (including payment to policy-holders of \$37,007.06).....	107,748 91
Assets (including uncalled Guarantee Fund).....	667,151 98
Liabilities to policy-holders.....	313,685 00
Surplus for security of policy-holders.....	353,406 93

THE SEMI-TONTINE RETURN PREMIUM PLAN

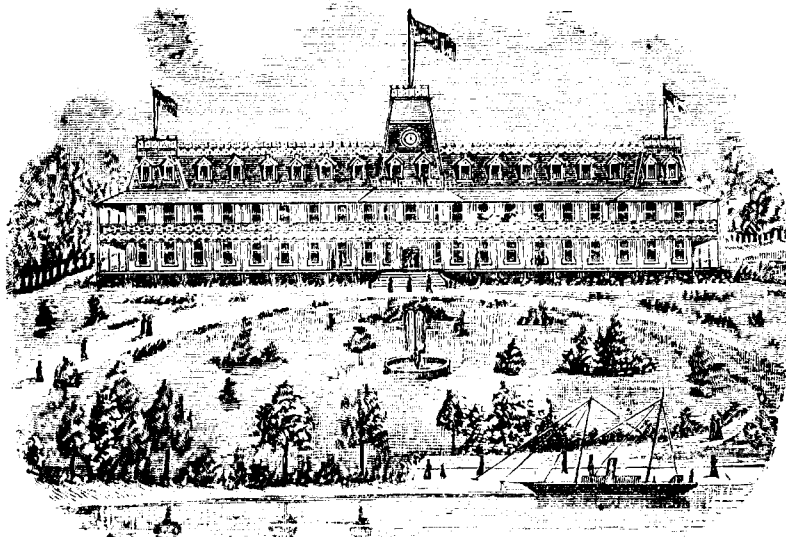
Provides that should death occur prior to the expiration of the Tontine period, the whole of the premiums that may have been paid will be payable with, and in addition to, the face of the policy—thus securing a dividend of 100 per cent. on the premiums paid, should death occur during said period.

THE COMMERCIAL PLAN.

The large number of business and professional men who have taken out large policies on the Company's Commercial Plan show the demand for reliable life insurance relieved of much of the investment elements which constitute the only payments of the ordinary plans, is not confined to men of small incomes, but exists among all classes of our people.

Agents wanted in all unrepresented districts. For further information apply to

WILLIAM McCABE, - **MANAGING DIRECTOR, TORONTO.**



The Peninsular Park Hotel Co. of Lake Simcoe will open their new and beautiful Summer Resort for the reception of guests on the 20th of JUNE.

The Hotel is newly built, elegantly furnished, contains all modern conveniences, electric bells, baths, etc. Postal, express, telegraph and telephone communication in connection.

The Hotel and Grounds will be Illuminated by Electric Lights.

The Pleasure Grounds are large, beautifully wooded, and contain two miles of beach on the shores of Lake Simcoe and Kempenfeldt Bay, surrounded by Fishing Grounds second to none on the continent. Magnificent Boating and Bathing Facilities.

The Peninsular Park is situated ten miles from the beautiful town of Barrie, from which steamers constantly ply, and has close connection with the cities of Toronto and Hamilton through the lines of the C. P. R. and N. and N.-W. Railways.

For particulars apply to

R. POWER, OR **R. J. FLETCHER,**
President, Barrie. Secretary, Barrie.

HEINTZMAN & CO.,

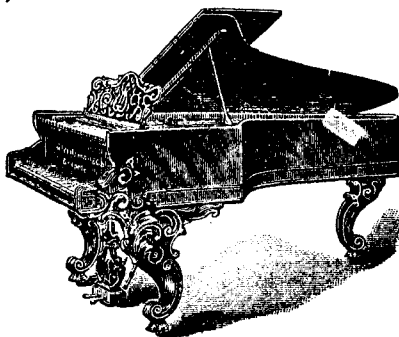
MANUFACTURERS OF

PIANOFORTES

GRAND, SQUARE AND UPRIGHT.

One of the oldest Piano houses now in the Trade.

Their thirty-six years' record the best guarantee of the excellence of their instruments.



Our written guarantee for five years accompanies each Piano.

Illustrated Catalogue free on application.

Warerooms: 117 King St. West, Toronto.

TODD & CO.

Successors to

QUETTON ST. GEORGE & CO.,

Offer the following Pure Wines for Medicinal and Family use.

RED.

VIN ROUGE, \$2.00 Per Gal.

ALICANTE, 4.00 "

WHITE.

MARSALA, \$3.00 "

MADEIRA, 4.50 "

WINE & SPIRIT MERCHANTS,

16 KING ST. WEST, TORONTO.

TELEPHONE NO. 876.

WINES.

PORTS—
Comprise Hunt & Co.'s, Sandeman & Co.'s Old Commendador (30 years old).

SHERRIES—
Julian & Jose, Pemartin's, Yriarte's & Misa's.

STILL HOCKS.—Deinhard's, Laubenheim, Mierstein, Rudesheim, Johannisberg.

LIQUEURS—Curacoa "Sec.," Menthe Verte Forte, Marasquin, Chartreuse, Creme de Rose, Creme de Vanille, and Parfait Amour.

CHAMPAGNES—
Pommery & Greno's, G. H. Mumm & Co.'s, and Perrier's.

NATIVE WINES IN GREAT VARIETY

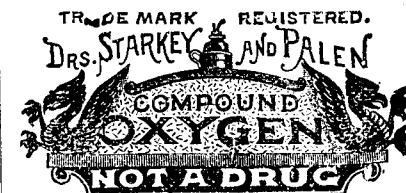
Goods packed by experienced packers and shipped to all parts.

Caldwell & Hodgins,

Grocers and Wine Merchants,

248 and 250 QUEEN ST. WEST.

Corner of John Street.



1529 Arch Street, Philadelphia, Pa

Let it be clearly understood that Drs Starkey and Palen are the only manufacturers and dispensers of Compound Oxygen. Any substance made elsewhere and called Compound Oxygen is spurious and worthless.

E. W. D. KING, 58 CHURCH ST., TORONTO.



Thoroughly cleanses the blood, which is the fountain of health, by using Dr. Pierce's Golden Medical Discovery, and good digestion, a fair skin, buoyant spirits, vital strength, and soundness of constitution will be established.

Golden Medical Discovery cures all humors, from the common pimple, blotch, or eruption, to the worst Scrofula, or blood-poison. Especially has it proven its efficacy in curing Salt-rheum or Tetter, Fever-sores, Hip-Joint Disease, Scrofulous Sores and Swellings, Enlarged Glands, and Eating Ulcers.

Golden Medical Discovery cures Consumption (which is Scrofula of the Lungs), by its wonderful blood-purifying, invigorating, and nutritive properties. For Weak Lungs, Spitting of Blood, Shortness of Breath, Bronchitis, Severe Coughs, Asthma, and kindred affections, it is a sovereign remedy. It promptly cures the severest Coughs.

For Torpid Liver, Biliousness, or "Liver Complaint," Dyspepsia, and Indigestion, it is an unequalled remedy. Sold by druggists.

DR. PIERCE'S PELLETS—Anti-Bilious and Cathartic.
25c. a vial, by druggists.

John Heath's PENS

Turned-up Point, Bronzed Fine or Medium, 2s. 6d. Golden Coated, 3s. 6d. Per Gross

JOHN HEATH'S TELEPHONE PEN 0278-F

Speak for Them selves.

Registerd Or in 6d. and 1/- Boxes. All Stationers. Sample Box (24 kinds) 7 stamps. BIRMINGHAM

Mailed on receipt of value by Copp, Clark & Co., Warwick & Son, and W. Bryce, Toronto.