

See how it is put together

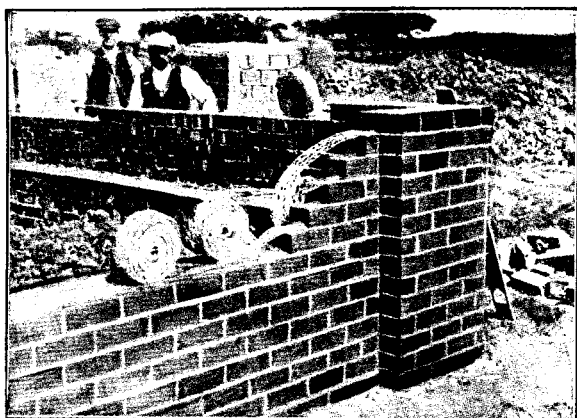
The accompanying cut shows the construction of the "Empire" closet tank. Notice the wooden dowels in addition to the tongue and groove in every joint. This is known as the "Bull Dog" joint and is patented in Canada and the United States. With such a joint it is impossible for the wood to separate or split, which makes "Empire" closet tanks absolutely reliable in every way. They give splendid satisfaction under the severest service tests. The seats are constructed in the same way, making them indispensable in factories, public buildings, or anywhere where they are subjected to rough usage.

Look for the "Bull Dog" mark on the end of every tank. It is a guarantee of careful construction and superior materials. Every part of every outfit is thoroughly tested before leaving our factory.

EMPIRE MANUFACTURING CO., LIMITED

BRASS FOUNDERS AND FINISHERS

LONDON, ONTARIO



"H. B."

Reinforcement

The Latest Development in Building Construction.

WRITE FOR PARTICULARS AND PRICES

REINFORCED BRICKWORK CO., LTD.

100 Carlton Bldg. Winnipeg

Western Agents

THE DOMINION EQUIPMENT & SUPPLY CO.

Winnipeg

Vancouver

Edmonton

Calgary, Alta.

Brick & Supplies, Ltd.

Read These Figures

In London, Ontario, the Annual Reports of Board of Education for the last five years show as follows :

Average cost per class room per year :

PEASE SYSTEM - \$27.75

Other Systems - - \$54.44

In Toronto Board of Education Annual Report, 1911, page 90,

PEASE SYSTEM in Annette

Street School cost per

room - - \$28.14

All other Steam Systems in

Toronto average per

room - - \$51.77

See the Difference ?

PEASE FOUNDRY COMPANY.

TORONTO

Factories at Brampton, Ont.

Branches : - Montreal Winnipeg Vancouver Hamilton