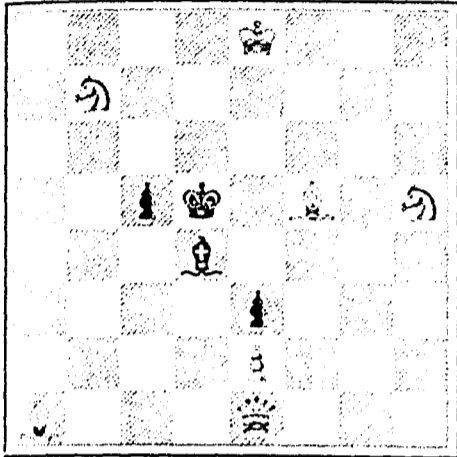


proposals in this respect, we hope, may be carried out. They propose that the losing side shall reimburse the winning side with the telegraphic and other expenses of the match, and that they shall also present their victorious antagonists with a symbolic object of art of not less value than one hundred dollars.

A scientific treatise by a French writer upon the difficulties connected with the Knight's tour over the chess-board, has been issued, according to *Turf, Field and Farm*, under the auspices of the Mathematical Society of France. We recommend this production to the class of chess amateurs who take delight in problems of a hundred moves or more, as we feel convinced that they will find much to their taste in a work of this character.

PROBLEM No. 344. By J. Thuraby. BLACK.



White to play and mate in two moves.

GAME 47281 (From the Field.) CHESS IN LONDON.

The 5th game in the match between Messrs. Zukertort and Blackburne.

- (Sicilian Defence.) White.—(Mr. Z.) 1. P to K4 2. Q Kt to B3 3. P to K Kt3 4. B to Kt2 5. P to Q3 6. K Kt to K2 7. B to K3 8. Q to Q2 9. P to R R3 10. Kt to Qsq 11. P to Q B3 12. Q takes Kt 13. P to K B4 14. Kt to B2 15. Castles K side 16. P to Q4 17. Kt to Qsq 18. B to Q2 19. Kt to K3 20. P to B5 21. Kt to Qsq 22. B to B3 23. P to K Kt4 24. Kt to K3 25. P takes P on pass 26. B to Ksq 27. Q to Kt2 28. K to Rsq 29. B to B2 30. B to Kt sq 31. B to R2 32. B to Qsq 33. B to B2 34. R to B5 35. K to Kt sq 36. Q R to K B sq 37. R takes R P 38. R takes B 39. R to R6 40. Kt to B5 41. R to R5 42. Q to B2 43. P to K5 44. P takes P 45. B to K5 46. R to R ch 47. R takes Q ch 48. B takes Kt 49. Q takes R P

SOLUTIONS.

Solution of Problem No. 342.

- White. 1. R to K2 2. Mate acc
- Black. 1. Any.

Solution of Problem for Young Players No. 340.

- White. 1. Q takes Kt (ch) 2. Kt takes P 3. R mates
- Black. 1. K takes Q 2. Any.

PROBLEMS FOR YOUNG PLAYERS No. 341.

- White. K at Q B5 R at Q4 B at K B sq Kt at K B8 Pawns at K Kt3 and K R6
- Black. K at K4 Pawns at K R2 Q4 and Q B3

White to play and mate in three moves.

UNIVERSITY OF BISHOP'S COLLEGE, LENNOXVILLE.

Michaelmas Term Begins Sept. 10th.

The examination for Matriculation and Bursaries will be held on September 13th. For particulars apply to EDWARD CHAPMAN, Secretary.

NOTICE.

THE ANNUAL GENERAL MEETING of the Shareholders of the BRITISH AMERICAN BANK NOTE COMPANY, for the election of Directors and other business, will be held at the Office of the Company, St. John Street, Montreal, on

TUESDAY, 6th SEPTEMBER, 1881, at 4 O'CLOCK P.M.

By Order,

GEO. JNO. BOWLES, Secretary.

The Scientific Canadian

MECHANICS' MAGAZINE

AND

PATENT OFFICE RECORD

A MONTHLY JOURNAL

Devoted to the advancement and diffusion of Practical Science, and the Education of Mechanics.

THE ONLY SCIENTIFIC AND MECHANICAL PAPER PUBLISHED IN THE DOMINION.

PUBLISHED BY

THE BURLAND LITHOGRAPHIC CO.

OFFICES OF PUBLICATION,

5 and 7 Bleury Street, Montreal.

G. B. BURLAND General Manager.

TERMS:

One copy, one year, including postage, \$2.00 One copy, six months, including postage, 1.10 Subscriptions to be paid in ADVANCE.

The following are our advertising rates:—For one monthly insertion, 10 cts. per line; for three months, 9 cts. per line; for six months, 8 cts. per line; for one year, 7 cts. per line; one page of illustration, including one column description, \$30; half-page of illustration, including half-column description, \$20; quarter-page of illustration, including quarter-column description, \$10. 10 per cent. off on cash payments.

THE BURLAND LITHOGRAPHIC COMPANY (LIMITED)

CAPITAL \$200,000,

GENERAL

Engravers, Lithographers, Printers

AND PUBLISHERS,

3, 5, 7, 9 & 11 BLEURY STREET, MONTREAL.

THIS ESTABLISHMENT has a capital equal to all the other Lithographic firms in the country, and is the largest and most complete Establishment of the kind in the Dominion of Canada, possessing all the latest improvements in machinery and appliances, comprising:—

- 12 POWER PRESSES 1 PATENT LABEL GLOSSING MACHINE 1 STEAM POWER ELECTRIC MACHINE, 4 PHOTOGRAPHING MACHINES, 2 PHOTO-ENGRAVING MACHINES, Also CUTTING, PERFORATING, NUMBERING, EMBOSSING, COPPER PLATE PRINTING and all other Machinery required in a first class business.

All kinds of ENGRAVING, LITHOGRAPHING, ELECTROTYPING AND TYPE PRINTING executed in THE BEST STYLE

AND AT MODERATE PRICES

PHOTO-ENGRAVING and LITHOGRAPHING from pen and ink drawings A SPECIALTY.

The Company are also Proprietors and Publishers of the CANADIAN ILLUSTRATED NEWS, L'OPINION PUBLIQUE, and SCIENTIFIC CANADIAN.

A large staff of Artists, Engravers, and Skilled Workmen in every Department. Orders by mail attended to with Punctuality; and prices the same as if given personally.

G. B. BURLAND.

THIS PAPER MAY BE FOUND ON FILE AT GEO. F. ROWELL & CO'S (NEWSPAPER ADVERTISING BUREAU) 10 SPRUCE STREET, WHERE ADVERTISING CONTRACTS may be made for it in NEW YORK.

1881.



1881.

CANADA'S GRAND

EXHIBITION

TO BE HELD IN

MONTREAL, P.Q.,

— FROM —

14th to 23rd SEPTEMBER!

Under the Patronage of His Honour the Lieut.-Governor of the Province of Quebec.

\$25,000 IN PRIZES!

This Exhibition promises to surpass any that has heretofore been held in the Dominion.

IT IS DIVIDED INTO THREE PRINCIPAL DEPARTMENTS:

AGRICULTURAL! INDUSTRIAL! HORTICULTURAL!

OPEN TO THE WORLD.

With a view of affording increased accommodation, the Exhibition Grounds have been extended, and the Buildings enlarged.

Ample provision is made for the display of Machinery in motion, and for the Exhibiting of Processes of Manufacture.

Many New and Interesting Features will be introduced in connection with the Exhibition.

Arrangements are being made for a GRAND EXPOSITION OF FRENCH INDUSTRIES, to be sent direct from Paris to Montreal, for this Exhibition.

It is expected that contributions will also be sent from other Foreign Countries.

The magnificent and world-renowned SS. Parisian will be in the Port during the time of the Exhibition.

GRAND DAIRY EXHIBIT!

Among the numerous other attractions,

SPECIAL PRIZES

On a magnificent scale, are offered by the Exhibition Committee and the Produce Merchants of Montreal, for exhibits of Butter and Cheese!

PRACTICAL WORKING DAIRY!

The Committee have made arrangements for a Butter and Cheese Factory in full operation during the entire Exhibition.

This promises to be one of the most interesting features of the Exhibition.

GRAND DISPLAY OF HORSES AND CATTLE!

Horses and Cattle will be shown in the Ring, between 2 and 5 p.m. each day, commencing Friday, 16th September.

Special Attractions!

Arrangements have been effected to supplement the Exhibition proper, by Special Attractions of an extraordinary character, embracing:—

TORPEDO DISPLAYS IN THE HARBOUR!

Demonstrating by a series of thrilling experiments on the River, the destructive effects of Torpedo Warfare, in this instance, against vessels of a large size provided for the purpose.

GRAND MILITARY DISPLAYS!

TORCHLIGHT PROCESSIONS AND FIREWORKS!

In the Evenings, specially designed on a scale of surpassing magnificence, eclipsing anything heretofore witnessed in Canada. Also,

ELECTRIC LIGHT EXHIBITION!

HORSE JUMPING!

GRAND ATHLETIC TOURNAMENTS

— AND —

FIREMEN'S COMPETITION, &c., &c.

A Programme of all the Attractions will be issued at a Later Date!

INCREASED FACILITIES WILL BE PROVIDED FOR REACHING THE GROUNDS.

Arrangements have been made with the Railway and Steamboat Companies to run Cheap Excursions and to issue Return Tickets at

REDUCED RATES!

Intending Exhibitors should send in their Entries without delay.

For Prize List, Entry Forms, or any other information, apply to the undersigned,

S. C. STEVENSON,

GEO. LECLERC,

Sec. Industrial Dept.,

Sec. Agr'l. Dept.,

181 ST. JAMES STREET.

63 ST. GABRIEL STREET.

40 CARDS, all Chrome, Glass and Mottos, in case name in gold & jet 10c. West & Co. Westville, Ct. \$777 a year and expenses to agents. Outfit free. Address P. O. VICKERY, Augusta, Me.