

also shows the Chaudiere docks. It is said to be one of the best ever taken out, both as regards quality and manufacture.

At no other point in the Dominion is the manufacture of lumber carried on so extensively as in the Ottawa valley. Within the past few years the quantity disposed of in the British market has greatly increased, and many manufacturers dispose of their entire season's cut to one shipper. Amongst the largest operators are Messrs. J. R. Booth, Bronson & Weston, W. C. Edwards & Co., Gilmour & Hughson, the Hull Lumber Company, Pembroke Lumber Company, Hawkesbury Lumber Company, Wm. Mason & Sons,



MR. HIRAM ROBINSON,
President Hawkesbury Lumber Company.

McLachlin Bros., St. Anthony Lumber Co. and Gillies Bros. Other prominent manufacturers are the Canada Lumber Company, Messrs. Ross Bros., Estate Jas. McLaren, Ottawa Lumber Company, A. Hagar & Co., Klock Bros., J. R. & J. Gillies, A. Lindsay, R. W. Conroy, A. & P. White, John Mackay, Martin Russell, Carswell & Francis and the Shepherd & Morse Lumber Company. Descriptions and illustrations pertaining to the operations of several of these manufacturers appear below:

THE HAWKESBURY LUMBER COMPANY.

The Hawkesbury mills are situated on the Ottawa river, in the county of Prescott, Ontario, on the first break on the Ottawa, half way between Ottawa city and Montreal. The mills were first founded on the Ottawa by Thomas Mears in the year 1804, and subsequently became the property

all his business life in connection with the Hawkesbury mills. A view of the mills is also shown.

These mills were the first large saw mills established on the Ottawa river, and their output has been principally deals for the English market, where their brand "H" is well known to the trade on that side. They also manufacture all grades of white and red pine, their output being from fifty to sixty million feet per season. Their supply of pine is taken from their limits on the Dumoine, Black and Sneyo rivers, in the province of Quebec, and on the river Petawawa, in the province of Ontario.

Early in May last two of the mills were de-

stroyed by fire. One of these was a spare mill and used only in the early spring. Of the remaining mills, three in number, one is furnished with a Wicks oscillating gate, a pair of twin circulars, and a large circular, having two double edgers, etc.; another is a band mill with double edger and butters, with piling, lath and shingle machines, and band re-saw, the third mill having two dealing gangs, with their accompanying slabbing gangs, two double edgers and one circular splitter.

In an additional building is contained a slab splitter and butter, also a deal edger and butter. It is probable that the company will add another mill at an early date.

There are in connection with the mills 17 miles of double piling tram car tracks and a piling capacity for 80 million feet of lumber. The town of Hawkesbury and the Hawkesbury mills have both rail and navigation facilities.

carry all the refuse to the burner, which is 20 ft. diameter and 90 feet high. The floor of the mill is kept on a level with the sorting table, to which the lumber is raised by air compression. The carriages, niggers and rollers are also operated by compressed air.

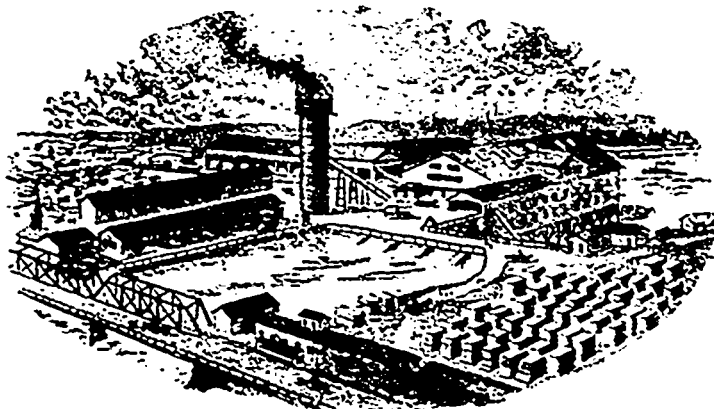
Above the dimension mill is the dynamo and store room. The dynamo, a 20 arc machine converted into a series incandescent system, furnishes light for the complete premises, and is operated by a separate 20 inch water wheel.

The scows on the river are loaded by means of shutes, which are raised or lowered by chains to suit the height of the boats. Switches extend from the C. P. R. track into the yards, so that every facility is afforded for quick shipment.

The piling ground covers an area of fourteen acres, and there is usually carried in stock about five million feet of lumber. A specialty is made

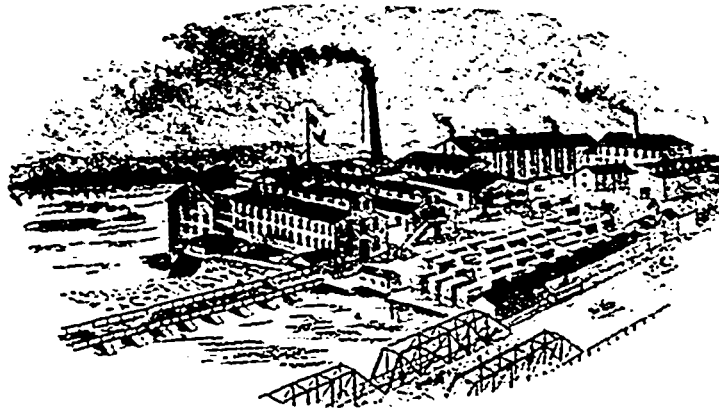


HAWKESBURY LUMBER COMPANY'S MILLS, HAWKESBURY, ONT.



SAW MILLS.

W. C. EDWARDS & COMPANY'S MILLS AT NEW EDINBURGH.



FACTORY AND PLANING MILLS.

of William and George Hamilton in the year 1808, and were enlarged and improved from time to time. They are supplied with power from the Ottawa river. A very substantial stone dam, about 1,200 feet in length crosses from the Ontario side of the Ottawa to a large island, giving the necessary head. The property remained in the hands of the Hamilton family until the death of the Hon. John Hamilton in 1888, when it became the property of the Hawkesbury Lumber Co., Ltd., the company being composed of Hiram Robinson, President; H. K. Egan, Managing Director, and R. L. Blackburn, Secretary. Mr. Robinson, whose portrait we present, has spent

W. C. EDWARDS & COMPANY.

The composition of the above firm is as follows: W. C. Edwards, M. P., President, J. C. Edwards, John A. Cameron, James Wood and John A. Wood, jr. They are among the largest operators of the valley, having large mills at New Edinburgh and Rockland. The limits from which their supply of timber is obtained are situated on the North Nation, Gatineau, Kippewa, Dumoine, Coulogne and Black rivers. The New Edinburgh mills are situated at the junction of the Rideau and Ottawa rivers, and comprise a large water power saw mill and a planing mill, which are under the able manage-

ment of Mr. James Wood. Some conception of their extent may be obtained from the illustrations appearing on this page.

At Rockland, which is about twenty-two miles down the Ottawa river from New Edinburgh, the company have one large mill and a smaller one, steam power. This portion of the business is under the general supervision of Mr. W. C. Edwards. In the large mill are two Wicks gangs, pair twin circulars and two band saws, also three small band saws for splitting and two circulars. Power is furnished by twelve boilers and a pair of engines, with cylinder of 24 inches diameter and 3 feet stroke, furnishing about 500 h. p. The small mill contains a circular and a gang saw,