

publication of the standard tariffs affords the opportunity to anyone who feels aggrieved to appeal against them to the Board. Then the Board can take such action as it deems fit. I may say that up to the end of Nov. the tariffs and supplements filed with the Commission amounted to close on 7,000 for freight traffic alone. You can see from this fact what an enormous amount of work in the way of supervision is here involved."

The standard tariffs filed by and approved for the various companies were published in subsequent editions of the Gazette, from which the following details are compiled:—

**PASSENGER RATES.**

**Algoma Central and Hudson Bay Ry.**—The tables approved include:—Between Sault Ste.

**FURRIERS  
TO THE QUEEN**

**MEN'S FURS**

We carry a most complete stock of Fur and Fur-lined Coats, Gauntlets and Caps.

We would like to send you a copy of our catalogue—it contains descriptions and prices of these Furs.

**HOLT, RENFREW & CO.**

**QUEBEC TORONTO**

**Ticket  
Agts.**



**Note**

Where **ILLINOIS CENTRAL RAILROAD COMPANY** has through car service, both Coach and Sleeper and Free Chair Cars,

**Chicago to Hot Springs, Ark., St. Louis, Omaha, St. Paul and Minneapolis, Memphis, Tenn., New Orleans, San Antonio, Texas, and all California**

in Special Excursion Pullman Cars. Round Trip Tickets to all South and South-west points daily, same to California. Rate same via New Orleans as other direct routes. First and third Tuesdays each month.

Special First-class Round Trip Tickets at one fare plus \$2.00 from Chicago to Home-seekers in South and South-west.

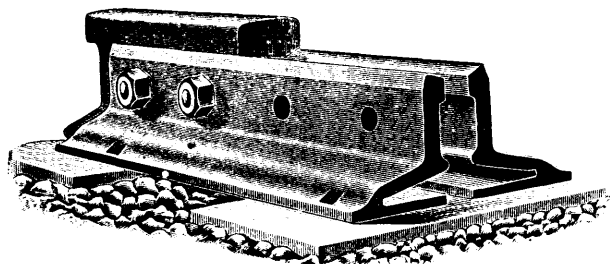
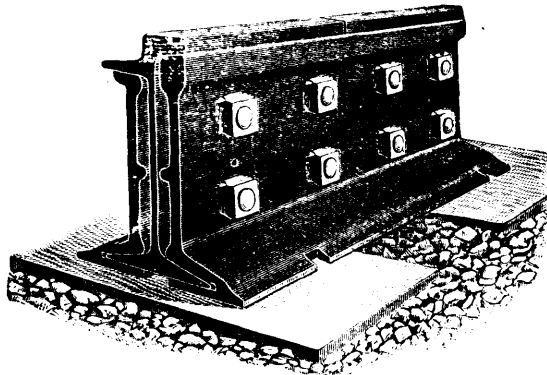
Look The Illinois Central map over and consult

**G. B. WYLLIE,**

Canadian Passenger Agent,

210 ELLICOTT SQUARE, BUFFALO, N.Y.

**Railroad Essentials.**



The day has passed when men of finance are willing to place their money into bad material in railroad construction only to be compelled to replace it by renewals or reconstruction after very little use. Many of the best and most successful steam and electric railroads use the rail joints of the Continuous patent type for standard track work, insulated joints, step joints, and electric bonding joints for the reason that experience has proven it to be the best appliance of its kind ever put upon the market, as evidenced by the fact that it is used in all parts of the world on over 20,000 miles of track.

MADE BY

**The Continuous Rail Joint Company of Canada**

**WM. E. CLARK, Manager.**

**Limited**

**216 Board of Trade Bldg., - MONTREAL, CANADA**

**Medals awarded at Paris and Buffalo Expositions.**

**CROSSEN CAR MFG. CO.**

— OF —

**Cobourg, Limited**

**MODERN HIGH-CLASS**

**ROLLING STOCK**

**Passenger ————— Freight  
and Electric Railway**

**Ruggles' Rotary Snow Plows**

**Car Castings, Forgings and Repair Parts**