

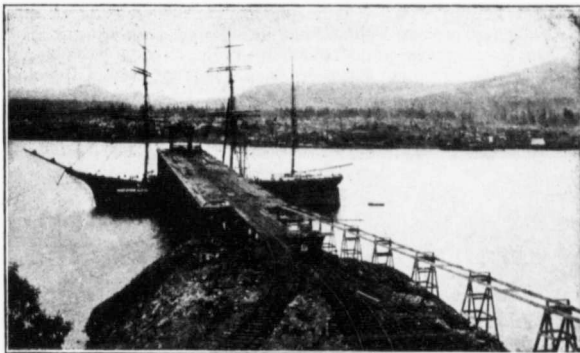
ALBERNI MINING DIVISION.

"Commencing at Amphitrite Point; thence northerly along height of land separating drainage area of those streams emptying into the Pacific ocean north of such point, from the drainage area of those streams emptying into Barclay sound, following such height of land to a point where such height of land joins the height of land separating drainage area of streams emptying into Pacific ocean on the west, from drainage area of streams emptying into the Straits of Georgia on the east; thence southerly along such height of land to a point where it joins the height of land separating the drainage area of Nitinat river and lake on the east from drainage area of those streams flowing into Alberni canal and Barclay sound on the west; thence southwesterly along such height of land to Pacific ocean, including coast islands, to Amphitrite Point and point of commencement."

Lode mining was commenced in this division at an earlier date than anywhere else on Vancouver Island. Prospectors took advantage of the Alberni canal, which enabled them to explore the mountains contiguous to the shore line. China and Granite creeks, which empty into the canal, had been prospected some years previous to lode mining prospecting, and placer gold mined from the beds and banks. This fact led to the installation of hydraulic plants and a more systematic exploration for gold-bearing quartz. The former are idle to-day, in fact appear to have been failures from the start, but as a result of the latter a large number of

Owing to various causes except at the Golden Eagle, situated at the head of China creek, but little activity has been shown around this section of the camp of late, although many promising prospects occur.

The geological conditions prevailing on Mineral Hill and in the vicinity of Granite creek appear to be peculiar to that immediate section, at least as far as known at present, because no discoveries of similar character of ore have been reported from the west side of the can-



COAL SHIPMENT WHARF AT PROTECTION ISLAND.

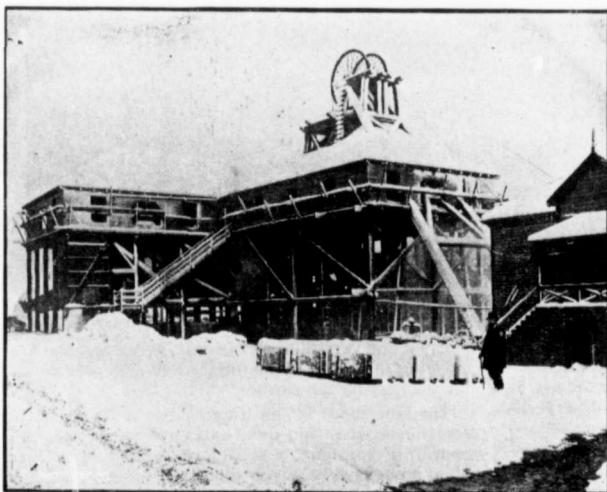
al in this mining division. There, so far as exposed, all the ore bodies are either magnetite, chalcopyrite or pyrrhotite, carrying copper and low-grade values.

The most important of the chalcopyrite bodies are those located in a zone about fourteen miles below the town of Alberni. The full extent of this zone in width is hardly known, but ore bodies of the same character have been exposed at intervals, northeast and southwest, for a distance of about five miles. At that point Uchucklesit harbor causes a break in the zone, but southwest of that lies Copper Island in Barclay sound, on which occur very extensive deposits of magnetite, while on the opposite side of the sound or southeast from Copper Island occur the ore bodies on the Sarita river, composed of magnetite and pyrrhotite.

Northwesterly from Copper Island, a few miles distant, occur vast bodies of magnetite, known as the Sechart group. Consequently this mineral zone may be considered as extending in width from Nahmint bay, about twelve miles below the head of Alberni canal, to the coast line at the entrance to Barclay sound, a distance of about twelve miles as the crow flies. In length the zone apparently extends to the northwestern extremity of Vancouver Island. In area this mineral belt

is the most extensive on the island, but up to the present time the results attained from working have not reached the importance of the camps at Mounts Sicker and Skirt combined.

The mineral claims situated in the Alberni Mining Division and located on this particular zone, on which the most extensive development has been performed,



HEAD WORKS AT NANAIMO.

claims were located on Mineral Hill, at the head of China creek, and the adjoining mountains as well as on the mountains near the head of Granite creek.

Outcroppings of gold-bearing quartz veins indicated the occurrence of free-milling gold ore, and led to the building of small stamp mills and the expenditure of considerable money in an attempt to develop mines.