



## Trans-Canada Limited

New cross-continent flyer

**3½ Days to Vancouver**

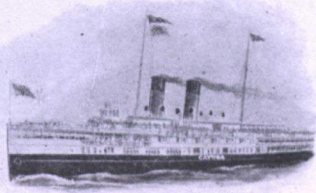
fastest time across the continent made by any railroad.

Leaves Toronto at 1.45 p.m. every Tuesday, Thursday and Saturday during July and August.

**Palace Sleepers Only.**

Tickets, berth reservations and full particulars at C.P.R. City Ticket Office, corner King and Yonge Streets. Phone Main 6580.

## Niagara Navigation Co. (Limited)



CONNECTING

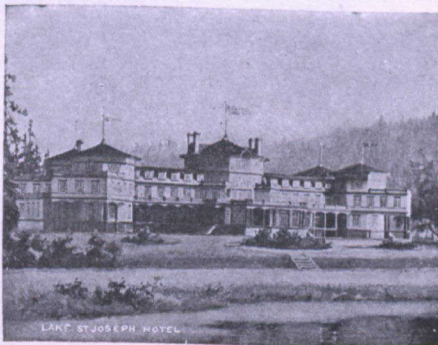
TORONTO — NIAGARA FALLS — BUFFALO

6 trips daily (except Sunday). Write for Illustrated Booklet.

B. W. FOLGER, Manager, TORONTO, CANADA

## CANADIAN NORTHERN AND QUEBEC & LAKE St. JOHN RYS

☐ The NEW and SHORT ROUTE to the FAR-FAMED ST. MAURICE and SAGUENAY RIVERS and to the delightful SUMMER RESORTS and FISHING GROUNDS North of Quebec.



Lake St. Joseph Hotel

☐ A new and delightful Summer Resort, overlooking one of the most beautiful lakes in Canada. Only 50 minutes' ride from Quebec or seven hours from Montreal by the Canadian Northern Quebec Railway.

### Hotel Roberval, Lake St. John

☐ Most Northerly Summer Resort in Eastern America. Passengers leaving Toronto at 10.00 p.m. may reach Hotel Roberval, Lake St. John, at 6.55 p.m. following day by this route.

A beautifully illustrated guide book free on application to:

**ALEX. HARDY,**  
G. P. A., Q & L. St. J. Ry.  
QUEBEC

**GUY TOMBS,**  
G. P. A., C. N. Q. Ry.  
MONTREAL



THE LAKE SHORE EXPRESS

FAST TRAIN FOR

**MUSKOKA LAKES**

Leaves Toronto 10 a.m.

Connecting at Bala Park and Lake Joseph with Muskoka Nav. Co. Steamers arrive Beaumaris 2.15 p.m., Port Cockburn 3.00 p.m., Port Sandfield 3.30 p.m., Royal Muskoka 4.30 p.m.; other points in proportion.

OFFICES:

Corner King and Toronto Sts. and Union Station, TORONTO  
Main 5600-5179



## "Highlands of Ontario"

The ideal Summer Resort region of America, including the following fascinating districts:

MUSKOKA LAKES

LAKES SIMCOE AND COUCHICHING  
LAKE OF BAYS

MAGANETAWAN RIVER

TEMAGAMI

LAKE NIPISSING AND FRENCH RIVER

30,000 ISLANDS GEORGIAN BAY

ALGONQUIN PARK

KAWARTHA LAKES, Etc.

40,000 SQUARE MILES of lake, river and island scenery.

1,000 to 2,000 feet above sea level. Fishing—Shooting—Canoeing—Camping. PERFECT IMMUNITY FROM HAY FEVER. Splendid train service to all districts via GRAND TRUNK RAILWAY SYSTEM.

Booklets descriptive of any of the above districts free on application to J. D. McDONALD, District Passenger Agent, Toronto, Ontario.

**W. E. DAVIS**  
Passenger Traffic Manager  
MONTREAL

**G. T. BELL**  
Gen. Pass. and Ticket Agent  
MONTREAL