

HYMN OF PITTSBURG.

My father was a mighty Vulcan; I am Smith of the land and sea; The cunning spirit of Tubal-Cain Came with my marrow to me.

I am Monarch of all the Forges. I have solved the riddle of fire. The Amen of Nature to cry of Man, Answers at my desire.

I am swart with the soots of my furnace, I drip with the sweats of toil; My fingers throttle the savage wastes, I tear the curse from the soil.

RICHARD REALY.

STRONG-MINDED WOMEN.

Repudiating revolutionary doctrines, women show sound common sense, and are really far more strong-minded than the small minority in revolt.

Mrs. John Sandford observes: "Seldom are women great proficient. The chefs d'œuvres of the sculptress need the polish of the master-chisel, and the female pencil has never yet limned the immortal forms of beauty."

Mrs. Ellis observes: "As women, the first thing of importance is to be content to be inferior to man in mental power, in the same proportion that you are inferior in bodily strength."

Mrs. Jameson pithily observes: "Women are illustrious in history, not from what they may have been in themselves, but in proportion to the mischief they have done or caused."

Mrs. Goro personifies "Female Domination" in Mrs. Armytage, graphically describes the mischievous consequences of a woman grasping at inordinate power, and frankly states her opinion that, in a comparison of intellectual power, "a first-rate woman would make only a third-rate man."

describes the mischievous consequences of a woman grasping at inordinate power, and frankly states her opinion that, in a comparison of intellectual power, "a first-rate woman would make only a third-rate man."

HEALTH AND HAPPINESS.

Out of health? Of course you are—and it is your own fault. There is no greater, more frequent, and more fatal delusion than that you can do "thus and thus" because others do it with impunity.

Mendelssohn could never resist a certain kind of light pastry which always made him ill, and King John, as we all know, died of a surfeit of lampreys.

Old men are extremely vain of their powers. They will pretend they can do as young men do, and more also—old fools!

MISCELLANY.

IN some respects Cetewayo has disappointed the British public. He has been more orderly than it was expected he would be.

MARIAN, the interesting giantess at the Alhambra, has been out of sorts, and a doctor who was called in to examine her big tongue and feel her big pulse, which works with the force of a donkey-engine, recommended a change of air.

So apartments were secured for the mountaineer of eight feet two somewhere in the North of London. She now makes the journey between her abode and the theatre in a private omnibus.

OUR CHESS COLUMN.

All communications intended for this Column should be addressed to the Chess Editor, CANADIAN ILLUSTRATED NEWS, Montreal.

We gave an extract from the Chess Column of the St. Louis Globe-Democrat a few weeks ago, which stated that Mr. Max Judd was engaged in a match with the chess-players of St. Louis at the odds of a Knight, and that this was the third encounter of a like nature which he had had with the same gentleman.

Mr. Judd, we learn, has eight opponents, with each of whom he has to play three games. The present condition of the struggle will be seen by the following notice, which is very interesting.

This is certainly true, and the fact itself is an evidence of what a circle of players may do who have an earnest desire for progress, and who, consequently, avail themselves of all advantages which good fortune may bring before them.

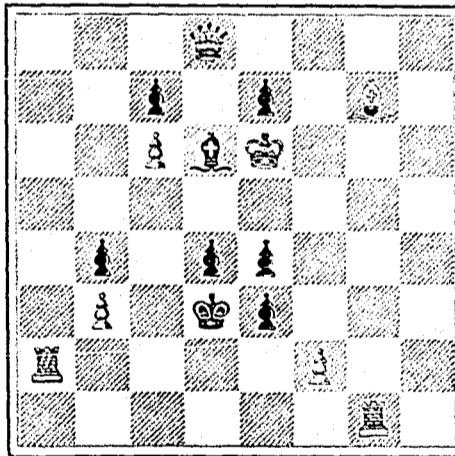
JUDD AND THE AMATEURS.

In the pending match at the odds of a Knight the amateurs are still ahead, and have every prospect of winning. Since last Sunday four more games have been played.

PROBLEM No. 399.

By FRITZ PEIPERS, San Francisco Cal.

BLACK.



WHITE.

White to play and mate in two moves.

SOLUTION OF PROBLEM No. 397.

- White. 1. Kt to Q 5. 2. Q to KR 5. 3. Mates acc. Black. 1. Kt to QR 3. 2. Any.

GAME 526th.

CHESS IN ENGLAND.

An interesting game played in the first class Tourney between the Rev. J. Owen and Mr. Sheriff Spens.

- WHITE.—(Mr. Owen.) 1 P to Q B 4. 2 P to K 3. 3 Kt to KB 3. 4 P to Q Kt 3. BLACK.—(Mr. Spens.) 1 P to K 3. 2 P to Q 4. 3 Kt to KB 3. 4 P to K Kt 3 (a).

- 5 B to Kt 2. 6 Kt to B 3. 7 P to Q 4. 8 B to Q 3. 9 Castles. 10 Kt to K 2. 11 Kt to K 5. 12 P to B 4. 13 Kt to Kt 4. 14 P takes Q P (c). 15 B to B 4 (d). 16 P to Q 6 dis ch. 17 P takes P. 18 Kt to B 3 (i). 19 Kt takes Kt. 20 Kt to K 5 (j). 21 B to R 3. 22 B takes R. 23 Q R to Q B sq. 24 B takes B. 25 Q to Q B 2. 26 Q to Q B 4. 27 P takes Q. 5 B to Kt 2. 6 Kt to B 3 (b). 7 Castles. 8 Kt to K 2. 9 P to Kt 3. 10 B to Kt 2. 11 Kt to Q 2. 12 P to K B 3 (c). 13 P to K 4 (d). 14 P to K 5 (f). 15 P to K B 4 (h). 16 Kt to Q 4. 17 Q takes P. 18 K to R sq. 19 Q to Q 3. 20 Q B takes Kt. 21 Q to K 3 (k). 22 R takes B. 23 R to Q sq. 24 Q takes B. 25 Kt to K B 3. 26 Q takes Q. Resigns.

NOTES.

- (a) Not a promising defence. B to K 2 would be good. (b) If necessary then self-condemnatory, as it blocks the Q B P and allows White to form a strong centre. (c) Possibly advisable, but it illustrates the weakness of his game. (d) Rather than make such a desperate advance we would play B P to K R 4, Kt to B 2, P to K B 4. (e) Good, though he could obtain a profit worth having by B P takes K P. (f) In its way ingenious, but it should not recoup. (g) We favor B B takes P, P to K B 4, 16 P to Q 6, coming out with a Pawn ahead. (h) B takes P is the correct reply. (i) Well played, and it yields him a winning game. (j) Not making the best of it. Q to B sq. gains the exchange, and pays nothing in position for it. (k) Badly played. 21 Q takes B, 22 B takes B. Kt takes Kt, 23 B takes R, Kt to Kt 5 and White's victory is rendered extremely doubtful; or 23 B P takes Kt, Q R to Q sq. and Black can make at least a most obstinate struggle, as the Bishops are of opposite colors. 22 Kt takes Kt would be, of course, satisfactorily met by B takes B.

CARDS, 10 Lily and imported Glass, 10 Transparent, 20 Motto, Scroll and engraved, in colors in case, and 1 Love Letter, name on all Sets. West & Co., Westville, Ct.

THE COOK'S FRIEND BAKING POWDER

Has become a HOUSEHOLD WORD in the land, and is a HOUSEHOLD NECESSITY

in every family where Economy and Health are studied. It is used for raising all kinds of Bread, Rolls, Pancakes, Griddle Cakes, &c., &c., and a small quantity used in Pie Crust, Puddings, or other Pastry, will save half the usual shortening, and make the food more digestible.



SAVES TIME. IT SAVES TEMPER. IT SAVES MONEY. For sale by storekeepers throughout the Dominion and wholesale by the manufacturer.

W. D. McLAREN, UNION MILLS, 19-52-362 55 College Street.

40 CARDS all Chromo, Glass and Motto, in Case name in gold & set 10c. West & Co., Westville, Ct.

British American BANK NOTE COMPANY, MONTREAL.

Incorporated by Letters Patent Capital \$100,000.

General Engravers & Printers

Bank Notes, Bonds, Postage, Bill & Law Stamps, Revenue Stamps, Bills of Exchange.

DRAFTS, DEPOSIT RECEIPTS, Promissory Notes, &c., &c., Executed in the Best Style of Steel Plate Engraving.

Portraits a Specialty. G. R. BURLAND, President & Manager.

THIS PAPER MAY BE FOUND ON FILE AT GEO. P. ROWELL & CO'S Newspaper Advertising Bureau (10 SPRUCE STREET), WHERE ADVERTISING CONTRACTS may be made for it in NEW YORK.

Cadbury's COCOA ESSENCE.

PURE, SOLUBLE, REFRESHING.

It is often asked, "Why does my doctor recommend Cadbury's Cocoa Essence?" The reason is that being absolutely genuine and concentrated by the removal of the superfluous fat, it contains FOUR TIMES THE AMOUNT OF NITROGENOUS OR FLESH-FORMING CONSTITUENTS of the average of other Cocoa which are mixed with sugar and starch.