

Miners Wanted To Chew BULL DOG TOBACCO,

Because it is the only Tobacco
which does not excite **Thirst**
for Water after using
TRY IT!

The St. Lawrence Tobacco Co., Ltd.

—Montreal.—

—W. B. Reynolds, Halifax Representative—

MINING SHOVELS

our 'FENERTY' Brand

COOK'S PAN SHOVELS,
COAL TRIMMERS SHOVELS,
SCRAPER SHOVELS, ETC.

—ARE USED BY—

The Largest Mines in Canada

MANUFACTURED BY

The HALIFAX SHOVEL Co.

HALIFAX, N. S.

ALL GOODS GUARANTEED.

Genuine Garlock Packings
FOR ALL PURPOSES.

**Pipe and Boiler Coverings,
ENGINEERS SUPPLIES.**

also

"Tauril" High Pressure Jointing
the Best Sheet Packing yet
Produced.

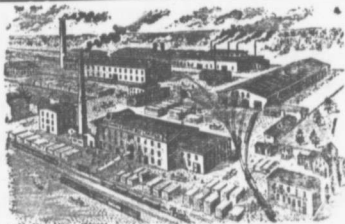
THE GARLOCK PACKING CO.
HAMILTON, ONTARIO

Used by Collieries in Lancashire, Staffordshire & Yorkshire

•XTERRA'

COLLIERY LAMP OIL
For Marmont, Muesole, Deflector or Closed Lamp.

PURE WHITE FLAME. LOW PRICE.
E. WOLASTON, Dutton St. **MANGHESTER**
Sole Representatives for Canada, **AUSTEN BROS.,**
Halifax, N. S.



—MANUFACTURERS OF—

RAILWAY
STREET and
MINING

CARS,

CAR WHEELS Church Pews.
FORGINGS & Fittings for Stores, Schools &c.
CASTINGS A SPECIALTY.

Large Stocks of Foreign and Domestic Lumber on Sale.

Rhodes,
Curry & Co., Ltd.

Branch **ROBBIE STREET**
HALIFAX, N. S.

BUILDING MATERIALS
GENERAL.

AMHERST N. S.

INTERCOLONIAL RAILWAY

Connection for

OCEAN LIMITED

(Canada's Summer Train)

leaves **STELLARTON 7.40 a. m.**

daily except Sunday

arrives **MONTEAL 1.30 p. m.**
daily except Monday.

Through Wentworth and Matapedia
Valleys in Daylight.

Connecting in Montreal, Bonaventure Union Depot.
—with the—

**Grand Trunk Railway's
INTERNATIONAL
LIMITED.**

LEAVING MONTREAL 9.00 A. M.
ARRIVING TORONTO 4.30 P. M.

and for
Detroit, Chicago and the West.