



OLD SCYTHIE.



CHECK-ROW PLANTING.

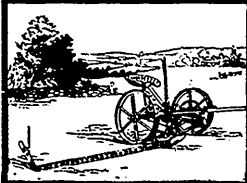
## A CENTURY'S PROGRESS

IN THE MANUFACTURE OF FARM  
IMPLEMENTS.

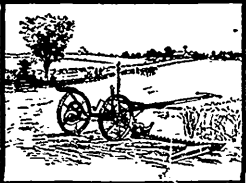
It is not so very long ago when mowing was done by the scythe in many parts of Canada. The scythe blades came from England and the snaths were made by the farmer or by some neighboring mechanic. The crook in the snath was natural, the agriculturist seeking out a sapling with the desired twist, or a log was selected having the proper crook and split into snath timber.

Hay was raked and pitched by hand, the same as it is now by some farmers who have but small patches to cut.

Grain was cut by the sickle and the scythe a century ago; but it is difficult to determine when the cradle came



MASSEY-HARRIS  
NO. 10 MOWER.



MASSEY-HARRIS  
NO. 7 MOWER.