

ST. AUGUSTINE

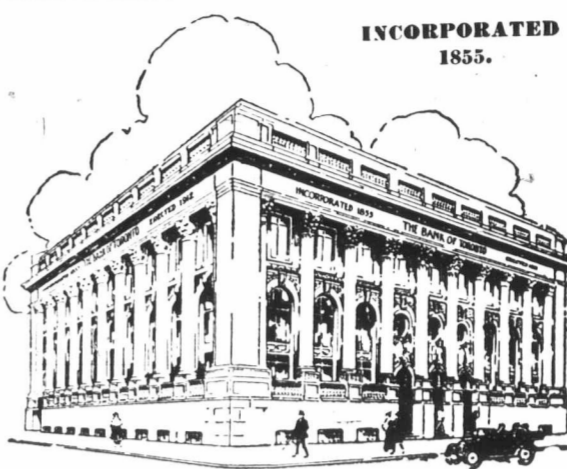
(Registered)
 The Perfect Communion and Invalids' Wine
 Prices/F.O.B. Brantford, cases (qts.), \$5.50;
 Montreal, \$6.00; Halifax and St. John,
 N.B., \$6.50; Winnipeg to Victoria,
 \$6.50, pints \$1.00 extra.
 List of agents from Halifax to Victoria
 and Booklets on application.
J. S. HAMILTON & CO.
 Manufacturers and Proprietors
 BRANTFORD AND PELEE ISLAND, ONT

PATRON—H.M. THE KING.
**For the Royal Navy
 and all Mariners**

Seamen's Institutes at Mon-
 treal, Halifax, St. John,
 Quebec, N. Sydney, Char-
 lotteville, and Vancouver, Victoria and Union
 Bay, B.C. \$150,000 needed for welfare-work.
Canadian National Ladies' Guild.
 President, LADY WILLISON. Fee \$1 yearly.
 Send Contributions or Enquiries to
Rev. Alfred Hall, Senior Chaplain, Toronto

**Joint Savings
 Accounts**

A JOINT Savings Account
 may be opened at The
 Bank of Toronto in the
 names of two or more per-
 sons. In these accounts
 either party may sign
 cheques or deposit money.
 For the different members of
 a family or a firm, a joint
 account is often a great con-
 venience. Interest is paid
 on balances.



Assets \$66,000,000

**THE
 BANK OF TORONTO**

**SPECIMEN
 POLICIES**

Those contemplating Life
 Insurance and desiring to
 see the precise terms of
 suitable Policies are invited
 to write to The Great-West
 Life (stating date of birth)
 —when Specimen Policies—
 identical with the regular
 issues—will be mailed.

The wide popularity of the
 Great-West Policies attests
 their value. Over \$119,-
 000,000 in force.

**The Great-West Life
 Assurance Company**

Head Office WINNIPEG
 Ask for a vest pocket memo book—
 free on request.



054—\$16.00 4057—\$5.00 4055—\$8.00 4058—\$3.50 4056—\$13.00
 4059—\$6.00 4060—\$3.00 4061—\$45.00

BRASS ALMS BASONS and OFFERTORY PLATES

An Alms Bason is an inexpensive but appropriate Easter gift to your church.
 Further illustrations of Ecclesiastical fittings gladly sent on request.

- | | | | |
|---|---------|---|--------|
| 4054. Brass Alms Bason, 15 inches, engraved border and centre | \$16.00 | 4057. Brass Offertory Plate, with attached plush mat, stamped I.H.S., 12 inches | \$5.00 |
| 4054A. Brass Offertory Plate, 12 inches, engraved border and centre | 9.50 | 4058. Brass Offertory Plate, 10 inches | 3.50 |
| 4054B. Brass Offertory Plate, 10 inches, engraved border and centre | 8.00 | 4059. Brass Alms Bason, plain, 15 inches | 6.00 |
| 4055. Brass Offertory Plate, 10 inches, engraved border and centre | 8.00 | 4060. Brass Offertory Plate, plain, 9 inches | 3.00 |
| 4056. Brass Alms Bason, 15 inches, engraved border and centre | 13.00 | 4060A. Brass Offertory Plate, plain, 12 inches | 3.75 |
| | | 4061. Brass Alms Bason, 15 inches, raised brass rope edge, richly embossed design, with "Agnus Dei" in centre | 45.00 |

HENRY BIRKS & SONS, LIMITED, MONTREAL

IN ANSWERING ADVERTISEMENTS, PLEASE MENTION "THE CANADIAN CHURCHMAN."

APR
 Ca
 SUB:
 S
 Club
 address
 Adve
 PHON
 Thi
 "Holy
 point
 tion o
 rector
 nemo
 was fo
 blessir
 branch
 and n
 found
 name.
 the tr
 ranger
 Passio
 of the
 Luke
 The
 sal, th
 comes
 which
 the wl
 It is s
 our L
 ample
 humilit
 The
 passag
 and pr
 based
 from h
 God,"
 a serva
 is asso
 The
 St. Ma
 chapter
 beautifi
 througl
 careful
 the Pa:
 custom
 Mornin
 be not
 and the
 sons ar
 original
 attentio
 its own
 of the
 In th
 lects fo
 one eac
 two for
 for Goc
 lects for
 Good
 Church
 sible to
 thought
 we are
 three C
 our Lor
 SI:
 Holy C
 Proces
 Offerte
 Childr
 Genera