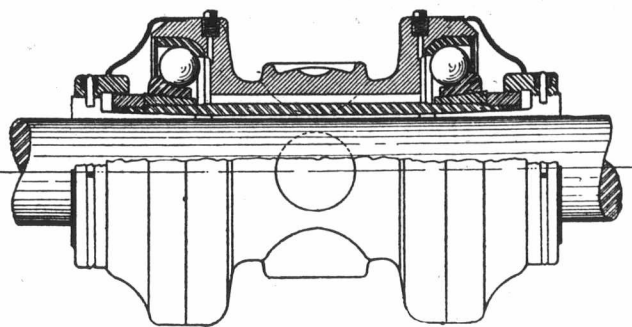


You Can Increase Your Power Without Increasing the Size of Your Power Plant



Your present line shafting is consuming from 15% to 60% of your power. The Chapman Double Ball Bearing will save this waste and turn it into productive energy.

They will also reduce your oiling and attention to a minimum. They fit any adjustable hanger and the change can be made with but little delay to you.

In Use in Over 2,000 Canadian Factories.

ONE MAN can do as much trucking with this ELEVATING TRUCK

as several men with several ordinary trucks



IT EFFECTS ENORMOUS SAVINGS IN TIME AND LABOR IN HANDLING SHELLS OR ANY OTHER FACTORY PRODUCT WHERE NUMEROUS OPERATIONS ARE REQUIRED. All material is stacked on the platforms. To move material the truck is backed under the platform; the handle of the truck is then pushed down, keeping the button depressed, which raises the truck bed and with it the loaded platform, at the same time automatically locking it in its raised position. When hauled to the desired position the button is pressed and the handle is raised, lowering the platform to the floor. The truck is then drawn from underneath and is ready to move another platform. Raising and lowering of the Truck can be operated with one hand only.

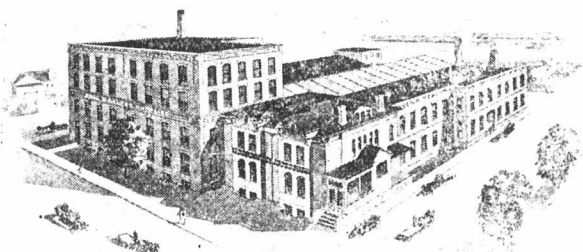
—can be raised or lowered at any angle.

We shall be pleased to submit prices and give any particulars required.

The Chapman Double Ball Bearing Company
OF CANADA, LIMITED

339-351 Sorauren Avenue - - - Toronto, Canada

Transmission Ball Bearings Co., Inc.
1407 West Ave., Buffalo, N.Y.



Established 1854

Incorporated 1898

One of Canada's Factories

which is organized to produce

ORNAMENTAL IRON WORK

ORNAMENTAL BRONZE WORK

STEEL CLOTHES LOCKERS

STEEL SHELVING

WIRE PRODUCTS OF ALL KINDS.

COAL HANDLING EQUIPMENT

Our Descriptive Bulletins sent anywhere on request

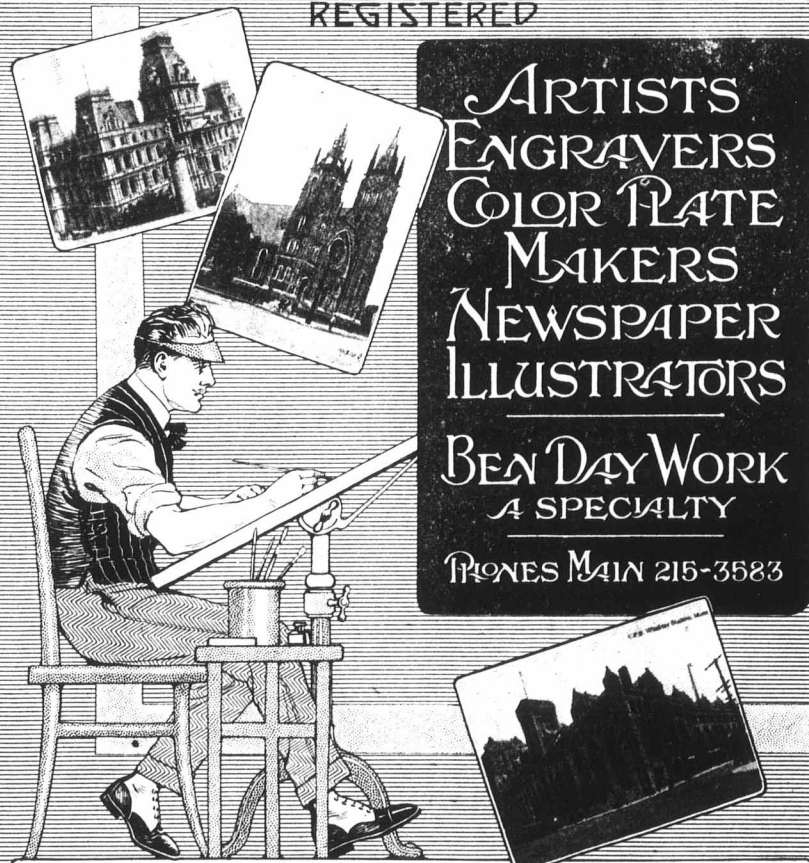
**The GEO. B. MEADOWS Toronto Wire,
Iron and Brass Works Company Limited**

479 West Wellington Street

TORONTO, - - - Canada

THE MONTREAL ENGRAVERS

REGISTERED



ARTISTS
ENGRAVERS
COLOR PLATE
MAKERS
NEWSPAPER
ILLUSTRATORS

BEN DAY WORK
A SPECIALTY

PHONES MAIN 215-3583

332-4 CRAIG STREET W., MONTREAL

All Engravings in this Issue are made by the above Firm