

Her Financial Institutions.

To a man of aesthetic tastes it is at all times a source of comfort to know that his money is kept in well-appointed walls. In this respect, also, is the residents of Picton well supplied. Her financial institutions bespeak for this town her well-known prosperity and are also a glowing evidence of the progressiveness of her citizens. At present there are three banks in town, all of which are doing well, and it is understood that the Empire Bank is to open a branch of their institution in Picton in the near future. These branches already established here are that of the Bank of Montreal, Standard and Metropolitan. Each and every one have palatial quarters, as cuts of the same elsewhere will sufficiently demonstrate.

THE BANK OF MONTREAL.

Although pre-eminently a Canadian Bank the policy of the management has been to establish agen-

cies in centres outside of the Dominion, until at the present time it has about 100 Canadian branches, with agencies in London, New York, Chicago, Spokane, Newfoundland and Mexico. During its existence the Bank of Montreal has been one of the most effective agencies in promoting the development of Canada, and is perhaps entitled to the undisputed title of "Canada's National Bank."

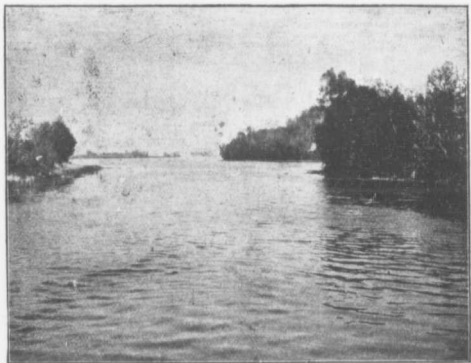
What We Manufacture.

The town of Picton is a distinctly progressive one and her numerous factories reflects great credit upon the energy and business instincts of her most prominent and thrifty men. Here several of the largest canning factories in the province are situated, their number being augmented this year by the large up-to-date plant of the Wright Co. Here has been installed the very latest apparatus for the preparation and canning of all kinds

of fruits and vegetables and, indeed, one can spend a very interesting half hour watching the different processes through which the fruit passes ere it becomes a canned, marketable goods. Besides the above mentioned there are two evaporators, two fruit houses, foundry, two barrel factories, two grist mills, one saw mill, a cement factory, two brick yards and marine repair shop all of which are in constant operation. On the outskirts of the town there is also situated an ashery and soap factory. All told it is estimated that upwards of two thousand men are steadily employed in these industries, and rarely indeed is an idle man to be found in the town the whole year through.

Shipping Industry.

From its central location it is but natural that Picton should be the main port of call in the Bay district. Daily palatial boats ply between the town and all ports within the inland waters, while all or nearly all the larger craft



In the Long Reach.

running between Hamilton, Toronto and St. Lawrence River ports load or unload at or outer or inner wharfs. Lying also at the terminus of the C. O. Railway much freight passes through her portals by rail also. During the excursion season many steamers touch at Picton, and the tourist making his headquarters here may sail early any day and enjoy the gorgeous scenery of the Bay of Quinte, St. Lawrence River and the Thousand Islands and be back at the place of starting early in the evening of the same day. At Kingston these boats connect with others bound for Ottawa and Montreal, thus giving the tourist an opportunity of visiting the political and merchantile capitals of the Dominion without the expenditure of excessive valuable time. Another pleasant vacation trip is that of across the lake to Rochester and throughout the entire season boats plying between here and that port find it almost impossible to handle the large crowds which daily seek accommodation. It is also a frequent occurrence to see numerous large freighters tied