

"Love is what you feel..."

# The Gateway

...for a dog or a pussycat."  
— Johnny Rotten

Tuesday November 29, 1988

The University of Alberta Students' Newspaper Since 1910

## Bitchin' waves with new board — CJSR

by Gina Carmichael

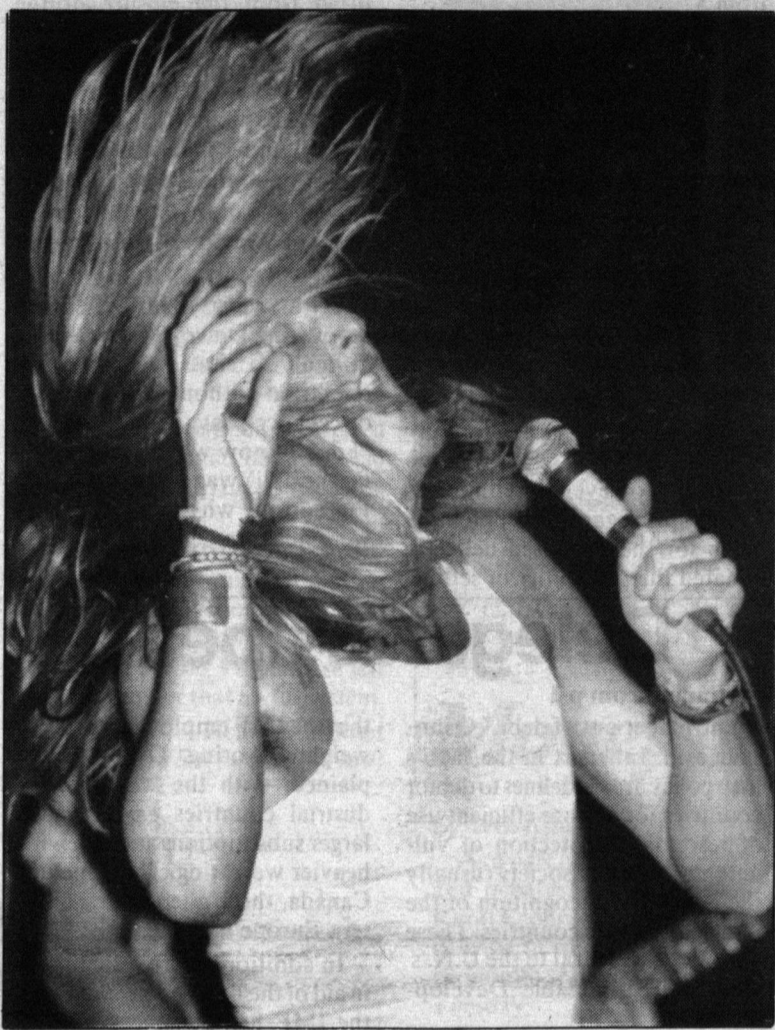
CJSR will be having a new 'on-air board' installed in the middle of January, thanks to a very successful fund-raising by the Friends of CJSR.

Chris Taylor, Station Manager at CJSR, realized that the cost of keeping up the present fifteen year old on-air board was not practical. He says jokingly that the old one, "is held together by chewing gum and binder twine." The old machine is very expensive to repair and some parts are no longer available. A problem is that the machine projects a "dirty sound" which affects the quality of the out-going sound.

The on-air board is a mixing console used in the studio. "10 or 11 pieces of equipment have to be mixed into one signal" to be sent to the transmitter by use of the on-air board, said Taylor.

The on-air board will cost approximately \$11,000. Of that amount, the last \$5000 needed was raised in a successful raffle. First prize was a Macintosh computer, donated by Apple Canada. Second and Third prize were \$1000 tuitions donated by the Students' Union and University of Alberta. The raffle had over 3500 paid entries which ran Sept. 8 - Oct. 31.

Taylor and an engineer will make the best selection from the available options of on-air boards and will give their recommendation to CJSR's eight person Board of Directors.



Dragos Ruiu

### Shakin' for South Africa

Singer Jeff Boo banged his head against apartheid. Several bands played Edmonton's Multipurpose Rumpus Room Saturday in protest to the South African government. see **Entertainment pp 8-9.**

## World deficit detailed

by Jon Romalo

Although most Canadians likely know very little, if anything about the United Nations' International Monetary Fund (IMF), Canada has an important function in the organization.

Much of Canada's economy is influenced by the IMF, an influence that touches on several key issues, like the value of the Canadian dollar, federal deficits, and even Free Trade, according to Festus Osunsade of the IMF.

Osunsade was one of the several representatives of the U.N. attending the Edmonton forum on Sustainable Development, held on Monday. A Nigerian, he studied economics and finance and holds a Ph.D. from Oxford. A senior advisor with the IMF, Osunsade has worked with the U.N. since 1969.

The IMF is an intergovernmental financial institution, with 151 countries as members. "It is like a financial club, with governments applying to become members. The members pay 'subscriptions' or 'membership dues', which we call quotas," explained Osunsade. The money is pooled into a fund that member countries can use in three-to five-year loans.

Created in 1944 with 39 countries and \$20 billion in subscriptions, the IMF today has \$120 billion in subscriptions, with Canada's contribution being about

\$5 billion. Canada has also made substantial loans to the IMF at times when its demand for loans exceeded its subscriptions, thus Canada is a very important contributor.

The IMF loans \$5 to \$10 billion every year, mostly to developing countries, and its current efforts are "mostly to help the developing

DELEGATES — p 2

## SU sees red at Dewey's

by Cam McCulloch

Dewey's Deli in HUB Mall is \$27,000 in the red since March 31 of this year, leaving the Students' Union holding the bag.

Problems include a lack of paying customers, excessive salary costs, abnormally high costs for goods, and menu restrictions.

In his preamble to the final SU budget, SU finance manager Ryan Beebe states sales at Dewey's Deli "have not met expectations."

According to the budget, which was approved by council last Tuesday, expenditures at Dewey's Deli are running about 130 percent of gross revenues.

Chris Welsh, SU vp finance and administration, says the "warning light" is on and the Deli is practising "financial restraint."

When Gladys Robertson became, on November 4, the fourth Deli manager in the last twelve months to quit, she was not replaced. Instead, her duties were split between Dewey's Bar manager Ken Nickel-Lane and another employee. The result is a projected saving of \$1,500 per month in salaries.

Dewey's has also consolidated its purchases with l'Express, the SU food service located in SUB.

But Sherrie Ritchie, former manager of Dewey's Deli, says they tried consolidating buying supplies in the spring of this year but "it didn't make a difference."

Part of the problem is the Deli menu.

The HUB Mall contract restricts the Deli from serving certain types of food, including hamburgers and fries, because they would be competing directly with other mall merchants which serve the

same foods.

Says Ritchie, "We were making home-made fries in a convection oven and they were the best fries in the mall." HUB forced the Deli to stop selling the fries after less than two weeks.

Ritchie says, "students love Dewey's. It has a great atmosphere. But they don't get the food they're looking for."

A glance around the premises reveals some people drinking canned pop (pop is not sold in cans at Dewey's), other drinking Java Jive coffee, one woman eating salad out of a tupperware container, and another young man eating a bagged lunch.

Melanie Ouimet and Aleksandra Subotic, two students who are in Dewey's three times a week for lunch, say they don't usually buy food from the Deli. Ouimet says she often brings her own lunch and buys pop at the drugstore across the mall.

Yet the two women keep coming back to Dewey's. Ouimet says "you can usually get a table. And it's one of the few places in the mall (in fact the only) where you can smoke." Subotic says, "you can relax here, or meet friends, study, whatever."

Todd Phillips, SU businessman, acknowledges the acute lack of lounge space in HUB.

Lounge space has consistently eroded in past years, including cutting one lounge in half to make way for an incoming A&W outlet.

Says Phillips, "I can't blame people for buying their food elsewhere and wanting to sit down. Just don't do it at Dewey's."

"We have to employ two people  
DISAPPOINTMENT — p 2

### INSIDE

#### News

Before our time travels back to 1969 for some angry young letters. p 3

#### Opinion

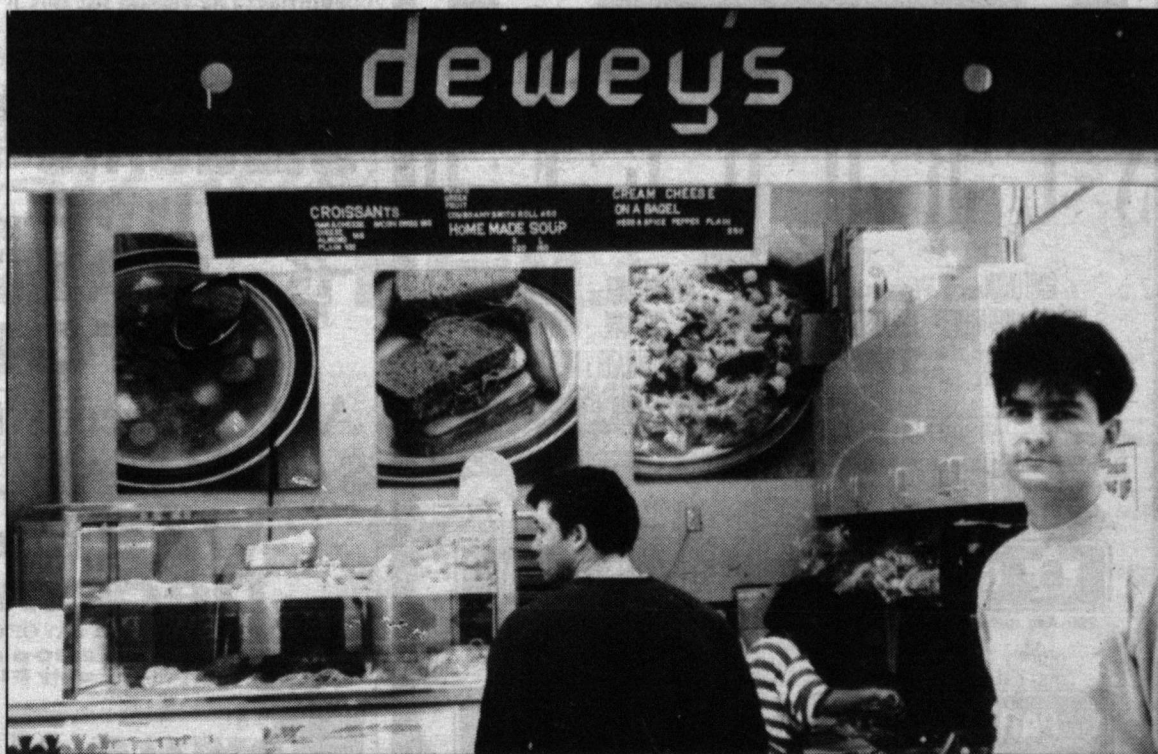
Yes folks, somebody out there likes Scott Thorkelson. p 4

#### Music

Dwight Yoakam's tight leather drawers. p 6

#### Sports

Kristan McLeod writes on Albertan Barry Blanchard, who was on Mount Everest. pp 12-13



Cam McCulloch

Bar manager Ken Nickel (left) wouldn't mind more company at Dewey's Deli counter. Operating on the sour side of its budget, the popular SU establishment is feeling the pangs of financial unrest.