

# All the Latest Whims of Fashion for the Miss



Dress 8547—25c.  
Braiding 11453, blue or  
yellow—20c.

Dress 8507—25c.  
Braiding—12321, blue or  
yellow—20c.

8505—Misses' Dress. Designed for 14 to 20 years. Size 16 requires 4½ yards 36-inch taffeta—¼ yard 27-inch allover lace for collar—2 yards braid for girdle—¾ yard 36-inch lining for underbody. Width at lower edge about 1¼ yard. The tunic blouse of this frock crosses in surplice style over a front-closing underbody and the tunic section is embroidered in design 12506. Wool or coarse rope silk may be used for the embroidery. If of silk, self-color is most fashionable, but if worsted is selected two or three vivid colors may be employed, with a little black to tone it down.

8483—Misses' Dress. Designed for 14 to 20 years. Size 16 requires 4½ yards 36-inch satin—¾ yard 36-inch white taffeta for vest—¾ yard caught-in fringe for trimming—2½ yards 36-inch lining for underbody and top of skirt. Fringe is a very fashionable trimming and the newest method of using it is illustrated here with the edge caught in so as to give the effect of insertion. The blouse is cut down in deep U-shaping disclosing a vest of white taffeta, and on the front-closing skirt is arranged a gathered tunic. Lower-edge width 1¼ yard.



Dress  
8483  
25c

Dress 8491—25c.  
Braiding 12319,  
blue or yellow—20c.



Dress 8434—25c.  
Embroidery 12473, blue  
or yellow—10c.

Dress 8533—25c.

Dress 8505—25c.  
Embroidery 12706, blue  
or yellow—20c.

Dress 8519—25c.

Dress 8503—25c.

8519—Misses' Dress. Designed for 16 to 20 years. Size 16 requires 4½ yards 36-inch foulard—1½ yard 36-inch satin—1¾ yard lace—2½ yards velvet ribbon—¾ yard 36-inch lining for underbody. Width at lower edge about 1½ yard. Suggestions of a new silhouette are offered in this frock, the skirt of which is drawn into a narrow band at the bottom. The side and back gores are cut in one and there is a deep tuck formed at the hips which gives the effect of a tunic.

8503—Misses' Dress. Designed for 14 to 20 years. Size 16 requires 5½ yards 36-inch taffeta—½ yard 40-inch white organdy for collar, cuffs, and vest—2 yards banding for trimming tunic—3½ yards grosgrain ribbon—¾ yard 36-inch lining for underbody. On the front-closing underbody is mounted a tucked vest framed by a long shawl collar of organdy to match. Just below the hips a two-piece tunic is arranged which is gathered at the top to form a frill heading. This is mounted on a two-piece gathered skirt closing at left side seam. Width at lower edge about 1¾ yard.

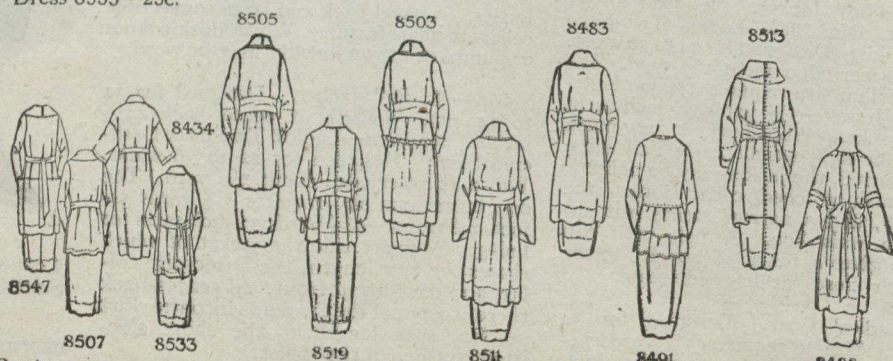
8511—Misses' Dress. Designed for 14 to 20 years. Size 16 requires 5¼ yards 36-inch tricolet—1¾ yard lace for collar—¾ yard 36-inch lining for underbody. One of the fashionable tie-around blouses forms part of this charming frock, the fronts of the blouse with extensions that make the girdle. Rows of jet nail-heads are applied to form the good-looking trimming, and over the long collar of tricolet is arranged one of heavy lace. The set into narrow armholes and fitting closely above the elbow, the sleeves widen out below elbow into bell-shaping with turn-back cuff sections on the inside. Width at lower edge about 1¼ yard.



Dress 8513—25c.  
Embroidery 12445,  
blue or yellow—20c.

Dress 8488—25c.

8547—Misses' Long-waisted Dress. Designed for 14 to 20 years. Size 16 requires 3 3-8 yards 54-inch wool Jersey—½ yard 36-inch satin for vest—1 3-8 yard 36-inch lining for underbody and top of skirt. Width at lower edge about 1 3-8 yard. The pockets are braided in design 11453.



8513—Misses' Dress. Designed for 16 to 20 years. Size 16 requires 3 yards 54-inch wool Jersey—1 yard white organdy for collar and cuffs—1¾ yard grosgrain ribbon—¾ yard 36-inch lining for underbody. Charming features of this attractive frock are the deep outstanding moat collar on the draped bodice and distended pockets on the tunic. The embroidery is design 12445. Lower-edge width 1¾ yard.

These are Pictorial Review Patterns. If your local dealer cannot supply you, send direct to us—253-259 Spadina Avenue, Toronto, Ontario.

DESCRIPTIONS CONTINUED ON PAGE 36F.