

When YOU Require Either Machinery or Supplies

It Pays to Deal With a
House You Can Depend On
—one that puts its *SERVICE* and your
SATISFACTION ahead of everything
else. Our business sense tells us that
deserving your patronage is the best
way of getting it—and making good on
deliveries will go a long way toward
giving you the service you desire.

... THE ...
A. R. Williams Machinery Co.,
LIMITED.
ST. JOHN, N. B.



MANN
AXE & TOOL
COMPANY
ST. STEPHEN, N. B.

Special Maul Head Steel Poll
Axe For Driving Wedges.

Why Carry a Sledge, When You
Can Carry Axe & Sledge in One?

ALSO MANUFACTURERS OF CELEBRATED REGISTERED BRAND

"I. X. L."

Axes and Edge Tools

The best equipped axe factory in Eastern Canada for the
manufacture of High-Grade Axes and Edge Tools.

CORRESPONDENCE INVITED!

D. & J. RITCHIE & CO.
NEWCASTLE, N. B.

MANUFACTURERS AND SHIPPERS OF

Spruce, Pine and Hemlock
LUMBER

Telephone Poles,
Railroad Ties, Etc.

Shipments by Rail or Water.

ENQUIRIES SOLICITED



The Oak
in tree
culture is
the type
for

STRENGTH
AND
ENDURANCE

GENUINE ENGLISH OAK TANNED

Leather Belting

Stands For The Same Thing in
Power Transmission

MANUFACTURED BY

D. K. McLAREN, LTD.

STOCK DEPOT IN ST. JOHN
90 GERMAIN STREET

Phone 1121

Box 702

BATHURST IS BOOMING

North Shore Town Has All Kinds of Energy---
Different Industries Are Expanding and
Times Are Good

Few towns even in "the Busy East" can show such a record of rapid progress as Bathurst has achieved during the past five or six years. From being a quiet lumbering and fishing village of a few hundred inhabitants, it has developed into a hustling town of between four and five thousand souls, and the end is not yet. In fact, Bathurst is only at the fringes of its ultimate prosperity. Men of enterprise and vision are developing its resources and rapidly making it a pulp and lumber center of no mean proportions. Incidentally, they have made it a seaport as well.

This latter development is one of the greatest assets possessed by the town, a port that can accommodate for large ocean-going vessels, as Bathurst can, will inevitably attract a volume of trade greater even than that of the district itself. Last year fourteen steamers of from 600 to 3,000 tons registered tonnage, and the same number of sailing vessels, cleared at Bathurst, the total amount of tonnage amounting to nearly 30,000 tons. This year, owing to the scarcity of ships, Bathurst will suffer a diminution of this trade, in common with all other ports, but had conditions been normal the shipping at this new port would have shown a substantial increase during 1917.

In addition to the Public Wharf, there are extensive wharves belonging to the Bathurst Lumber Company and the Gloucester Lumber & Trading Company, both of which concerns are extending their facilities in this direction with a view to coping with the larger business that is ahead. The Bathurst Lumber Company's wharf is connected by a spur line with the Intercolonial Railway main line between Montreal and Halifax. The spur line is fitted with coal handling machinery with a daily capacity of 750 tons, and this equipment will probably hasten the reopening of the Bathurst Mines, of which event there are persistent rumors, as one of the difficulties the Mining Company had to contend with was the long haulage of the ore to seaboard.

The enterprising management of the two firms referred to above is rapidly developing the further prosperity of the town. In addition to their lumbering operations, which are amongst the most extensive in the country, the Bathurst Lumber Company have recently brought the capacity of their pulp mill up to fifty tons a day each Sulphite and Kraft pulp. This is only a beginning as further increases are contemplated not only in these two commodities, but others as well. New allied industries are being planned and will be established as soon as peace comes, or conditions permit. The new plant will give employment to hundreds of additional hands, including girls.

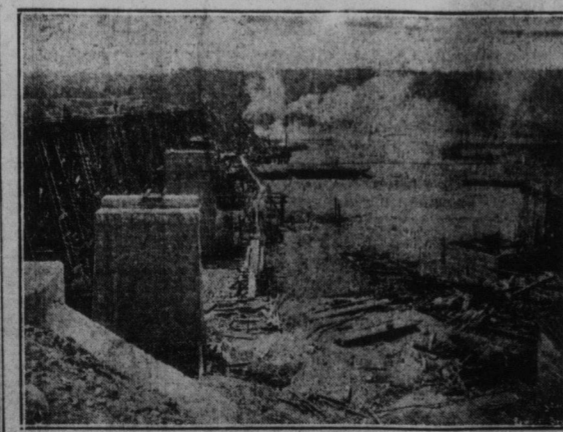
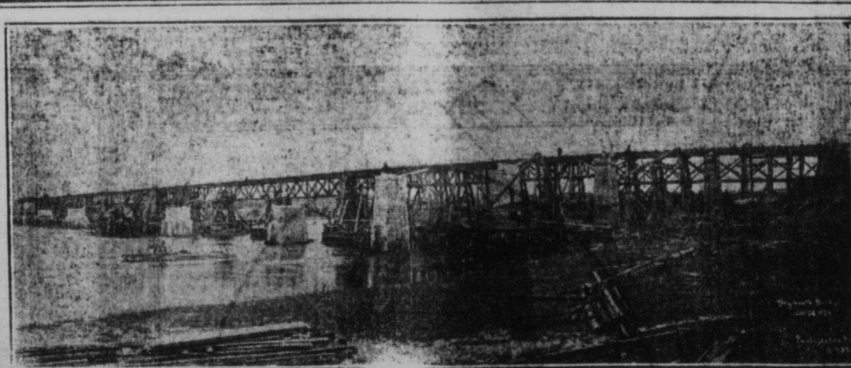
The new enterprise will include the manufacture from paper of certain articles at present made from materials which the war has rendered prohibitive in price. Recently the writer was shown a number of interesting samples by the manager of the Bathurst pulp mill, Mr. J. H. Thickens. These included twine, sacks and rugs, and for strength and appearance they were a revelation of the possibilities of the ubiquitous pulp. Mr. Thickens, who is an authority on paper, and who has written a standard technical book on its manufacture, declared that there was no reason whatever why such articles could not be manufactured in Bathurst, and he added that as the work was clean, light, and pleasant, it would afford employment for female labor.

It must not be imagined, however, that Bathurst is a "one industry" town. It can boast of a number of industries other than those already referred to, and which under capable management, are growing rapidly in importance. The George Eddy Company, who for some years have operated a large and well-equipped wood-working factory, have recently laid down a flour and grist plant with a daily capacity of twenty-five sacks. Judging by the success that has attended this step, Messrs. Eddy are more than likely to add to their activities in this direction before very long.

Now that the Province has gone dry one is glad to know that Bathurst possesses its own ginger ale factory. This concern, installed with the latest machinery by Alderman Azad Landry, has recently changed hands, and under the guidance of its new proprietor, Mr. A. Melanson, is rapidly making a name for the long list of temperance beverages which it turns out.

With the first sign of spring building operations were set on foot throughout the district. Houses and stores are to be seen rising in every direction, and although the town already possesses an apparent sufficiency of stores, others are being added to the list, not only in the town proper but in the more outlying districts. Fenwick Bros. have built a large corner block, fitted with the most up-to-date refrigerating plant, for the accommodation of their growing butcher business. Mr. A. T. Hinton, who already owned one of the largest general stores in town, has just completed a rush erection of another equally large to take care of his automobile trade.

New offices and workmen's bungalows for the pulp mill, and innumerable private dwellings and extensions, are part of the hustling being done in the building trade in Bathurst this summer, and they indicate the permanent nature of the boom that has come to this fortunate North Shore town.



VIEWS OF WEYMOUTH BRIDGE, DOMINION ATLANTIC RAILWAY

POWERS & BREWER
CONTRACTORS

107 Prince William St.,
ST. JOHN, N. B.

BUILDERS
OF BRIDGES

Maritime Foundry & Machine Works, Ltd.

CHATHAM, N. B.

SUCCESSORS TO
Alex. Dunbar & Sons Co., Limited, Woodstock, N. B.
Miller's Foundry & Machine Works, Chatham, N. B.

MANUFACTURERS OF
Logging Engines
... AND ...

Mill Machinery
Steam Boats and Launches

Gangs, Rotarys,
Clapboard Planers,
Clapboard Machines

Edgers, Splitters,
Lath Machines,
Shingle Machines

Hoisting Engines in All Sizes
Marine Engines in All Sizes

THE
University of New Brunswick
FREDERICTON, N. B.

ONE HUNDRED AND EIGHTEENTH YEAR BEGINS 15th SEPTEMBER, NEXT

Scholarships Available at Entrance

Fourteen County Scholarships (\$60 each.)
An Asa Dow Scholarship (\$90)
St. Andrew's Society Scholarship (\$60)
Highland Society's Scholarship (\$75 annually)

Numerous Prizes and Scholarships Offered in Competition During The Year.

Thorough and Complete Four Year Courses in ARTS, CIVIL
ENGINEERING, ELECTRICAL ENGINEERING
and FORESTRY.

High Standard of Work Shown by Recognition Accorded
Graduates in All of The Above Departments.

Correspondence Invited. Copy of Annual Calendar Gladly Furnished on Request.

CECIL C. JONES, CHANCELLOR.

PAUL LEA CO.,
Limited

LUMBER MECHANICS

MANUFACTURERS OF

Doors, Sashes,
Interior Finish, etc.

Try Our Birch Flooring - None Better!

PHONE 118

96 Westmorland St., MONCTON, N. B.

The Allies

Estimated That A
Will be 1,000
Share is Show
of Wheat
ful Manag
Crop go
He

A recent despatch from W
as forecasted by the Departm
the prospect of more than ordi

A total yield estimated at
more bushels than last year's
virtually no reserve store, it
the most rigid economy.

The department forecasts
estimates of winter wheat produ
more than was forecasted from
yield.

Herbert C. Hoover in his
must do to sustain its Allies
which must be considered, will
cereals alone, and that their ne

Production in the Allied
only a portion of these needs
surplus on the present scale of
says, and points out that reduc

The report closes with an
administration in its efforts to
"We are at war," it says
also fights who helps a fighter
if we don't help the war will no

The situation abroad was

"Great Britain normally
bread; France about one-hal
quantities needed are brought

"But in these abnormal
greatly reduced by the withdr
and munition factories; also b
Kingdom, France and Italy is
grain-raising countries, as Russ
others, as Australia, South A
the long haul for which ships ca

"In addition the actual c
is increased by the transfer of
of great physical activity and
armies in the field. There m
grain to maintain the dairy and
America's duty is set forth

"All those conditions thr
supplying our co-belligerents w
their great armies in fighting
families of the fighters and the

A cablegram recently rec
Institute of Agriculture, gave t

The condition of growing
lands and Algeria, mediocre in

Areas sown to wheat:

Spain, 10,300,000 acres or

Switzerland, 128,000 acres

India, 32,885,000 acres or

Algeria, 3,151,000 acres or

Areas sown to rye:

Spain, 1,846,000 acres or 1

Switzerland, 74,000 acres c

These figures as well as ac
increases in the old world ac
average. In no case is there
year.

Reports published from ti
crop reporters, in the Manito
that there will probably be a
will not show very much increa
will show a considerable increa

All reports from Canada, th
there will be some small increa
of wheat available this year, eve
of the Allies. It would appea
management will make the ce
Weather conditions are of cour
weather reports. A week may
or a bad frost. Not for anothe
forecast the total grain product
but as pointed out by Mr. Hoo
demands even with good crops.
000,000 bushels of cereals. C
200,000,000 bushels of cereals, b

The question naturally aris
ing the demand for flour? It
city of Minneapolis than in
interesting to note that the exp
and bounds. The flour exports
pared with \$24,000,000 in the
increase of nearly 500 per cent
valued at \$192,000,000 as comp
compared with a little over \$56
to the Allies, grain and flour