

CANADIAN PACIFIC EXPRESSES AND OTHER STEAMSHIPS

ST. LAWRENCE ROUTE.
Empress of Ireland, Fri. June 30th.
Lake Champlain, Tues. July 6th.
First Cabin.
EMPRESESSE. \$30.00
One Class (Second Cabin).
LAKE CHAMPLAIN. \$47.50
LAKE MONTREAL. \$47.50
Second Cabin.
EMPRESESSE. \$13.35
Third Cabin. \$1.35
Other Boats. \$1.35
W. B. HOWARD, D.P.A., C.P.R.
St. John, N. B.

EASTERN S. S. CO.

Reliable and Popular Route Between
ST. JOHN AND BOSTON.

St. John to Boston. \$4.00
St. John to Portland. \$5.50
Complete Wireless Telegraph
Equipment.

COASTWISE ROUTE.
Leave St. John at 9:00 a. m. Mondays, Wednesdays and Fridays for Eastport, Leduc, Portland and Boston.
Returning, leave Union Wharf, Boston, Mondays, Wednesdays and Fridays at 9:00 a. m. and Portland at 5:00 p. m. for Leduc, Eastport and St. John.
City Ticket Office, 47 King Street.
W. G. LEE, Agent, St. John, N. B.

MANCHESTER LINERS

From Manchester to St. John
May 16 Man. Shipper May 29
May 25 Man. Shipper June 12
June 8 Man. Commerce June 20
June 29 Man. Commerce July 17
July 13 Man. Miller July 31
July 27 Man. Commerce Aug 14
Aug 17 Man. Commerce Sept 4
These steamers also take freight for Philadelphia.
WILLIAM THOMSON & CO.
Agents, St. John, N. B.

Furness Line

From London to St. John
May 13 Rappahannock May 29
May 19 Kanawha June 10
June 4 Alleghany June 22
June 18 Shenandoah July 6
July 4 Rappahannock July 22
and fortnightly thereafter, dates subject to change.
Steamers have accommodation for a limited number of saloon passengers.
W. M. THOMSON & CO.
Agents, St. John, N. B.

PICKFORD & BLACK LINE

ST. JOHN, N. B. TO DEMERARA.
S. S. Ocean sails July 13 for Bermuda, St. Kitts, Antigua, Barbados, Trinidad, Demerara.
S. S. Oruro sails Aug. 3 for Bermuda, St. Kitts, Antigua, Barbados, Trinidad, Demerara.
For passage and freight apply
WILLIAM THOMSON & CO., Agents
St. John, N. B.

HAVANA DIRECT

SS. Tanagra June 18
Steamer July 15
And Monthly Thereafter.
For space, etc., apply to
WILLIAM THOMSON & CO.,
Agents, St. John, N. B.

Scenic Route

THE STEAMER MAGGIE MILLER will leave Millville daily (except Saturdays, Holidays and Sundays) at 9 a. m., 4 and 6 p. m. Returning from Baywater at 7 and 10 a. m., 4 and 6 p. m.
Saturday at 6.45, 9.30 a. m., 2.30, 5.00 and 7.00 p. m. Returning at 6.00, 7.30 and 10.30 a. m., 3.15, 5.45 and 7.45 p. m.
Sundays and Holidays at 9 and 10.30 a. m., 2.30 and 6.15 p. m. Returning at 9.45 and 11.15 a. m., 5 and 7 p. m.
JOHN MCGOLDRICK, Agent.
Phone, 226.

THE International Railway

New Open For Traffic
Uniting CAMPBELLTON, at head of navigation on St. Lawrence with the ST. JOHN RIVER VALLEY at ST. LEONARDS. At St. Leonards, connection is made with the CANADIAN PACIFIC RAILWAY for EDMUNDSTON and points on the TEMISCOUATA RAILWAY, also for GRAND FALLS, ANDOVER, PERTH, WOODSTOCK, FREDERICTON, ST. JOHN, and WESTERN POINTS. Affording the shortest and cheapest route for FISH, LUMBER, SHINGLES, and FARM PRODUCTS, from BAIE CHALEURS and RESTIGOUCHE POINTS to the MARKETS of the EASTERN STATES. At CAMPBELLTON connection is made with trains of the INTERCOLONIAL RAILWAY. An Express train, with superior accommodation for passengers, is now being operated daily, each way, between CAMPBELLTON and ST. LEONARDS, and, in addition to the ordinary freight trains, there is also a regular accommodation train carrying passengers and freight, running each way on alternate days.
The International Railway Company of New Brunswick
January 1, 1911.

Mercantile Marine

DAILY ALMANAC.
Saturday, June 24, 1911.
Sun rises 4.42 a. m.
Sun sets 8.11 p. m.
High water 9.36 a. m.
Low water 3.38 p. m.
Atlantic Standard Time.

PORT OF ST. JOHN.

Arrived Friday June 23.
Stmr Calvin Austin, 2553, Pike, from Boston, W. S. Lee, 350 passengers and general cargo.
Schr Star Speedy and tug Lisgar, from Quebec with the dredge Stoneliff in tow, 21 days.
Schr Roger Drury (Am.), 307, Cook, from Rockland, Me., R. C. Elkin, bal. Schrs Malia, 388, Rafuse, from Portland, Florida, via Westport, N. S. R. C. Elkin with 120,190 feet pitch pine and cypress lumber.

Left Friday June 23.
Schr B. L. Hazard (Am.), 348, Cramer, from Fredericton for New York. Alex Gibson Co., 1,640,100 spruce laths. Coastwise—Stmr Grand Mannan, 180, Ingersoll, North Head and old; Westport, Ill., 49, Cossins, Westport and old; Margaretville, 49, Baker, Margaretville and old; Connors Bros., 49, Warner, Chance Harbor and old; Schrs Bay Queen, 51, Trahan, Bellville Cove; Maple Leaf, 98, Baird, Windsor; Two Sisters, 85, Sabean, River Hebert; Roseann, 10, Scovill, North Head; Jennie Palmer, 77, Alcorn, River Hebert; Try Again, 15, Scovill, Grand Harbor; Hattie McKay, 74, Card, Harboro; Rolfe, 54, Rowe, River Hebert; Huester, 44, Hill, Walton; Ready Now, 18, Denton, Westport; Yarmouth Packet, 76, Thurber, Yarmouth; Shamrock, 53, Benjamin, Matland and old; Matland, 44, Howe, Matland and old; Lena, 50, McLellan, Noll and old; Galle, 47, Dowling, Sackville; Glenara, 73, Bell, St. Martins; Ethel, 22, Hald, Advocate and old; Edna Mand, 61, Gough, St. Martins and old; Leunie and Edna, 12, Dupitt, Grand Harbor.

Cleared June 23.
Schr Minnie Slawson (Am.), 271, Whelpley for Boston via Lynn, Mass. Stetson Cutler and Co., 328,200 feet spruce boards, etc., 900,000 spruce laths.
Schr Rescue, 277, Weldon for City Island for orders. Stetson Cutler and Co., 108,766 feet spruce deals, 1,165,510 spruce laths.
Schr W. H. Baxter, 330, McBride for Windsor, N. S. A. W. Adams, ballast. Coastwise—Schr May Belf, Puddington, Riverside; Bay Queen, Trahan, Bellville Cove; Margaret, Simmonds, St. George; Ruby, O'Donnell, Musquash; James Barber, Gough, St. Martins; Rose Georgina, Saulnier, Church Point.

Sailed June 23.
Stmr Governor Cobb, 1556, Allan, for Boston via Westport.
Stmr Glenek, 2093, Hurst, for Sydney, C. B.
Stmr Alleghany, 2789, Harnden for Newport News, Va.

DOMINION ATLANTIC RAILWAY

Hillbroke, N. B., June 21.—Ard. Str Nanna (Nor.), Neora, Montreal (Cid.—Edna (Nor.), for Newark, Quebec, June 23.—Ard. Strm Empress of Ireland, Forster, from Liverpool at 2 a. m.

Grand Trunk Railway System Round Trip Homeseekers' Excursion Tickets

To Western Canada via Grand Trunk Double Track Route to Chicago, etc., on sale every second Tuesday until September 18th, at very low fares.
THE FINEST FARMING COUNTRY IN THE WORLD.
Is to be found along the line of the Grand Trunk Pacific, in the Provinces of Manitoba, Alberta and Saskatchewan. Descriptive literature with beautifully engraved maps, and giving full information about FREE HOMESTEADS, and how to obtain them free, can be had at any G. T. R. Ticket

ARE YOU SLEEPLESS, NERVOUS?

Two horrors crowd into one life—the product of poor digestion and the poisoned system. The only cure for the terrible condition—plenty of food—but mind you, food proper. Get rich, nutritious blood, strengthen the system and drive out poisons. Then comes vitality, endurance, power, Perfection, and more, it makes sick people well, weak people strong, changes "nerves" and insomnia into robust health. Take Ferrozone and health is yours. 50 cts. at all dealers.

VESSLS BOUND TO ST. JOHN.

Steamers.
Alpha, 1366, chartered.
Milton, Buenos Ayres, June 5.
Mounty, 2114, chartered.
Pikepool, 2271, chartered.
Romey, 1763, chartered.
Shenandoah, London, June 19.
Tobasco, St. John's, Nfld, June 19.
Baris.
Elmina R. Smith at Port Reading June 19.
Glendevy, Baltimore, June 16.
Attilla, Barbados, May 30.
Schooner.
Frontenac, 1457 tons, at New York.

MONTREAL STOCK EXCHANGE.

Black Lake Com.	11	10
Bell Telephone.	147	145
Can. Pac. Rail.	243	242 1/2
Cement Com.	24	23 1/2
Cement Com.	84 1/2	84
Can. Rub. Com.	98	92 1/2
Crown Reserve.	233	232
Dominion United.	72 1/2	72 1/2
Dom. Tex. Com.	68 1/2	68
Dom. Steel.	57 1/2	57 1/2
Dom. I. and S. Pfd.	104	104
John Superior.	84	82
Paul.	102	98
Hal. Elec. Tram.	142	142
Illinois Trac. Pfd.	92	91
Laurentide Com.	239	228 1/2
Lake Wood Pfd.	140	139 1/2
St. Paul SS. Marie.	140	139
Mexican.	82	80
Rio Com.	112 1/2	112 1/2
Mont. St. Rail.	100 1/2	100 1/2
Mont. H. and P.	166	165 1/2
Mont. Cotton.	150	145
Mackay Com.	91	88
N. S. S. and P.	101	100 1/2
New Que. Com.	65	64 1/2
Ottawa Power.	149 1/2	149
Ogilvie Bonds.	129	129
Que. Elec. Pfd.	57 1/2	57 1/2
Porto Rico Com.	64	62
Rich. and Ont. Nav.	118 1/2	118
Sawyer Massey.	33 1/2	33
Sho. Pail. Tram.	101	100 1/2
Shawinigan.	113 1/2	113 1/2
Steel Co. of Canada.	26 1/2	26 1/2
Tor. St. Rail.	136 1/2	136 1/2
Twin City Rpd. Trst.	108 1/2	107

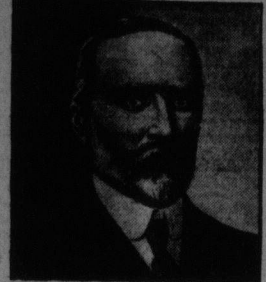
W. B. HOWARD, D.P.A., C.P.R.,
St. John, N. B.

EVERY GENERAL STORE-KEEPER NEEDS "FRUIT-A-TIVES"

Inkerman, Ont., Sept. 23rd, 1901.
"I am in the General Store business and have been a resident of Inkerman for thirty-seven years. Since I started this store four years ago, I have found your remedy 'Fruit-a-tives' the most satisfactory one I have used. Many of my customers have used 'Fruit-a-tives' and I know of two cases that have been completely cured of Dyspepsia."

"I recommend 'Fruit-a-tives' on every possible occasion and would say that if every general store keeper who stocks medicine, would keep 'Fruit-a-tives' prominently displayed, he would increase his business many fold."

ALEX. LARUE



"Fruit-a-tives" is the only remedy in the world made of fruit and only remedy that will positively cure Constipation, Indigestion, Pain in the Back, Headaches, Rheumatism and all Kidney and Bladder Troubles.
50c. a box, 6 for \$2.25, trial size, 25c. dealers, or from Fruit-a-tives Limited, Ottawa.

CANADIAN LOCOMOTIVE CO. TO ENLARGE PLANT

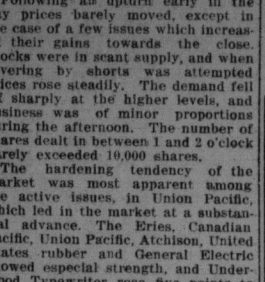
Company will Issue Million and a Half Bonds and Three Millions and a Half Stock.

The remarkable railway development of Canada has enormously increased the demand for locomotives of ever-increasing size, power and cost. The demand is one of the most certain in any line of manufacture.
There is a big field for a larger and up-to-date locomotive building plant in Canada—the present plant of the Canadian Locomotive Company is entirely inadequate to handle its orders and just now there is a backlog of orders which would keep an augmented plant busy until the end of 1913. The owners of the plant—a powerful syndicate of English and Canadian capitalists—intend to enlarge the works so as to come with the increasing demands for locomotives in Canada. The present output is about 75 engines a year—depending on the type required—and many valuable contracts have to be declined owing to the company's inability to deliver. It is now intended to double the capacity of the plant, and perhaps treble it.
To enable them to make this expansion the company are issuing one million and a half of first mortgage—6 per cent. gold bonds, one million and a half 7 per cent. cumulative, preferred and two million common stock. There will remain in the treasury half a million of bonds to be used for future extensions.
Being exempt from taxation, and with little danger from labor troubles, as explained in Pres. Hart's letter, it is in an exceptionally favorable position to manufacture most profitably.
The company's premises occupy three blocks in the city of Kingston, having a street frontage of about 865 feet by a depth of about 556 feet—to a frontage on Lake Ontario of about 1,175 feet—the area enclosed being 333,000 square feet. There are about a dozen buildings including one of the finest power plants in the country in the magnificent erecting shop with huge travelling cranes, boiler-shops, riveting shops, machine shops, tank shops, blacksmith shops, foundry shops and pattern rooms, paint shops and carpenter shop. In all, the works occupy 7 acres. The company has its own up-to-date machine shop for the repair of all kinds of machinery, and its own wharves and docking facilities on Lake Ontario.
The engines it turns out are the most up-to-date possible for the country and are satisfactory in service as proved by repeat orders from all previous buyers. The C.P.R., the G.T.R., the N.E.R., the National Transcontinental, the Canadian Northern and the government owned Temiskaming and Northern Ontario Railroad—are all customers of the Canadian Locomotive Company of Kingston. Six engines recently turned out for the C. & N. O. are said to be the largest ever built in Canada. One of the engines declared them to be the finest he had ever seen, and were giving the greatest satisfaction. At present the company has contracts for some 50 engines with the C.P.R., the C.N., the I.C.R., and the Algoma Central and it is becoming increasingly difficult to keep up with the orders.
The working staff is about 800 strong and a big proportion of the employees have grown up with the works and own their own houses in the neighborhood. This fact is a pretty strong safeguard against labor troubles common in other centres.
The men who are to control the new company are recognized powers in the financial world. The banking firm in charge of the business is Ainslie, Jarvis & Company of Toronto, and associated with them are the well known firm of Brown, Shipley & Company, bankers of London. E. B. Pratt, president of the Sun Life Assurance Co. of London, Lord Glenconner, better known as Sir Edward Tennant, a brother-in-law of Mr. Pratt, president of the Balfour, first cousin of ex-Premier A. J. Balfour.
Of the large amount for which firm subscriptions have been received, and which will be allotted in full, it is worthy of note that Paris, (France) and London (England) have taken a substantial sum.

FIRMER TONE IN THE STOCK MARKET

New York, June 23.—A decidedly firmer tone was apparent in the stock market today, and the losses sharp reaction were largely made up. Trading fell to so low a point, however, as to rob the movement of much of its significance, no important operations being attempted on either side of the market. The course of stocks illustrated apparently the uncertainty which has seemed to be the predominant characteristic of the situation during most of the present month. There were no signs of the pressure which was exerted yesterday, and with its disappearance trading seemed to be utterly without motive.
Following an upturn early in the day prices barely moved, except in the case of a few issues which increased their gains towards the close. Stocks were in scant supply, and when covering by shorts was followed by prices rose steadily. The demand fell sharply at the higher levels, and business was of minor proportions during the afternoon. The number of shares dealt in between 1 and 2 o'clock barely exceeded 10,000 shares.
The hardening tendency of the market was most noticeable in the active issues, in Union Pacific, which led in the market at a substantial advance. The Erie, Canadian Pacific, Union Pacific, Atchafalpa, United States Rubber and General Electric showed especial strength, and Underwood Typewriter rose five points to 100. Sentiment was more cheerful following yesterday's outburst of pessimism, although the day was almost barren of developments with influence upon the market.
News from Washington that no move had been made to procure a rehearing by the Supreme Court of the American Tobacco Co., within the time stipulated, was followed by renewed pressure against American Tobacco on the curb, and the stock lost ten points.
Crop advices received today were fragmentary, and contained little information of assistance in shaping sentiment. While further unfavorable reports came from northwest, such information as has been obtainable in the last day or two, gives rise to the belief that less damage has been done than has been indicated by the so-called "crop-killers" whose chief interest apparently is speculation.
Another favorable weekly report on bank clearings throughout the country bore out the testimony which had been received of a slow betterment in some lines of business. The report disclosed an increase of more than 13 per cent. in clearings, as compared with the corresponding week last year. Virtually every city reported gains with the exception of Pittsburgh, whose statement of a decrease of 26 per cent. reflected the condition of the iron and steel markets. Known movements of currency during the week indicated that a further substantial gain in cash will be reported in tomorrow's statement.
Total sales, par value, \$2,123,000. United States bonds were unchanged on call.

ALEX. LARUE



"Fruit-a-tives" is the only remedy in the world made of fruit and only remedy that will positively cure Constipation, Indigestion, Pain in the Back, Headaches, Rheumatism and all Kidney and Bladder Troubles.
50c. a box, 6 for \$2.25, trial size, 25c. dealers, or from Fruit-a-tives Limited, Ottawa.

CANADIAN LOCOMOTIVE CO. TO ENLARGE PLANT

Company will Issue Million and a Half Bonds and Three Millions and a Half Stock.

The remarkable railway development of Canada has enormously increased the demand for locomotives of ever-increasing size, power and cost. The demand is one of the most certain in any line of manufacture.
There is a big field for a larger and up-to-date locomotive building plant in Canada—the present plant of the Canadian Locomotive Company is entirely inadequate to handle its orders and just now there is a backlog of orders which would keep an augmented plant busy until the end of 1913. The owners of the plant—a powerful syndicate of English and Canadian capitalists—intend to enlarge the works so as to come with the increasing demands for locomotives in Canada. The present output is about 75 engines a year—depending on the type required—and many valuable contracts have to be declined owing to the company's inability to deliver. It is now intended to double the capacity of the plant, and perhaps treble it.
To enable them to make this expansion the company are issuing one million and a half of first mortgage—6 per cent. gold bonds, one million and a half 7 per cent. cumulative, preferred and two million common stock. There will remain in the treasury half a million of bonds to be used for future extensions.
Being exempt from taxation, and with little danger from labor troubles, as explained in Pres. Hart's letter, it is in an exceptionally favorable position to manufacture most profitably.
The company's premises occupy three blocks in the city of Kingston, having a street frontage of about 865 feet by a depth of about 556 feet—to a frontage on Lake Ontario of about 1,175 feet—the area enclosed being 333,000 square feet. There are about a dozen buildings including one of the finest power plants in the country in the magnificent erecting shop with huge travelling cranes, boiler-shops, riveting shops, machine shops, tank shops, blacksmith shops, foundry shops and pattern rooms, paint shops and carpenter shop. In all, the works occupy 7 acres. The company has its own up-to-date machine shop for the repair of all kinds of machinery, and its own wharves and docking facilities on Lake Ontario.
The engines it turns out are the most up-to-date possible for the country and are satisfactory in service as proved by repeat orders from all previous buyers. The C.P.R., the G.T.R., the N.E.R., the National Transcontinental, the Canadian Northern and the government owned Temiskaming and Northern Ontario Railroad—are all customers of the Canadian Locomotive Company of Kingston. Six engines recently turned out for the C. & N. O. are said to be the largest ever built in Canada. One of the engines declared them to be the finest he had ever seen, and were giving the greatest satisfaction. At present the company has contracts for some 50 engines with the C.P.R., the C.N., the I.C.R., and the Algoma Central and it is becoming increasingly difficult to keep up with the orders.
The working staff is about 800 strong and a big proportion of the employees have grown up with the works and own their own houses in the neighborhood. This fact is a pretty strong safeguard against labor troubles common in other centres.
The men who are to control the new company are recognized powers in the financial world. The banking firm in charge of the business is Ainslie, Jarvis & Company of Toronto, and associated with them are the well known firm of Brown, Shipley & Company, bankers of London. E. B. Pratt, president of the Sun Life Assurance Co. of London, Lord Glenconner, better known as Sir Edward Tennant, a brother-in-law of Mr. Pratt, president of the Balfour, first cousin of ex-Premier A. J. Balfour.
Of the large amount for which firm subscriptions have been received, and which will be allotted in full, it is worthy of note that Paris, (France) and London (England) have taken a substantial sum.

The Royal Trust Company

(OF MONTREAL)
Branches at Toronto, Ottawa, Winnipeg, Quebec, St. John, N. B., and Vancouver.
Paid up \$1,000,000
Reserve Fund 1,000,000
Board of Directors:
President—Right Honorable Lord Strathcona and Mount Royal, G.C.M.G.
Vice-president—Sir Edward Clouston, Bart.
Sir H. Montagu Allan,
A. Baugarten,
E. B. Greenfield,
C. M. Hays,
C. R. Hosmer,
Sir W. C. Macdonald,
Hon. R. Mackay,
A. Macleider,
H. V. Meredith,
D. Morris,
James Ross,
Sir T. G. Shaughnessy, K.C.V.O.,
Sir W. C. Van Horne, K.C.M.G.
Authorized to Act as:
Executor and Trustee under Wills,
Administrator of Estates,
Guardian of Estates of Minors,
Trustee for Bond Issues,
Committee of Estates of Lunatics,
Trustee under Trust Deeds,
Receiver, Assignee, Liquidator for the benefit of Creditors.
To give any Bond required in any judicial proceedings.
Borrowers may be retained in any business they bring to the Company.
E. M. SHADWILT, (Manager of the Bank of Montreal) MANAGER, St. John, N. B.

The Sherwin-Williams Company of Canada, Limited, 7 p. c. Cumulative Preferred Shares Price 95 With Bonus of 20 per cent. Common Stock

Referring to the public offering of the above securities as contained elsewhere in these columns, we have secured a substantial reservation which will be allotted to applicants through us. Subscriptions received over and above this amount will be placed in the public issue.
Applications may be telegraphed at our expense and will receive immediate attention.
Copy of prospectus and application forms on request.

J. C. MACKINTOSH & CO.

ESTABLISHED 1872. H. M. SMITH, Mgr.
Members Montreal Stock Exchange. Direct Private Wires.
Telephone, Main 2328.
111 Prince Wm. Street, (Chubb's Corner)
HALIFAX, MONTREAL, ST. JOHN.

Western Assurance Company

CAPITAL \$2,500,000
Branch Office 96 Prince William St., St. John, N. B.
R. W. W. FRANK, Manager

"A TRUSTEE THAT NEVER DIES" The Eastern Trust Company

ACTS AS—Executor, Administrator, Trustee, Guardian.
120 Prince Wm. St. CLARENCE H. FERGUSON, Manager for N. B.

BRANDRAM'S GENUINE B.B. WHITE LEAD

Put It In The Contract

If you will have your house painted this spring, make a part of the contract that the painter uses Brandram's B.B. Genuine White Lead. It is the whitest and finest white lead—and excels all others in durability. Brandram's B.B. Genuine White Lead has been the world's standard from generation to generation—and is today in greater demand than ever.

Made in Canada by
BRANDRAM-HENDERSON, LIMITED
MONTREAL, HALIFAX, ST. JOHN,
TORONTO, WINNIPEG.

Offering of \$300,000 7 Per Cent. Cumulative Preferred Stock With 20 Per Cent. Bonus of Common Stock OF THE SHERWIN-WILLIAMS COMPANY OF CANADA, LIMITED (Incorporated Under the Laws of the Dominion of Canada)

As the above stock has been largely over-subscribed, the subscription lists were closed at noon Friday, June 23rd.
As far as possible consideration will be given to all applications bearing post office mark of above date.

MONTREAL-LONDON SECURITIES CORPORATION, JOHNSTON, MCCONNELL & ALLISON, MONTREAL