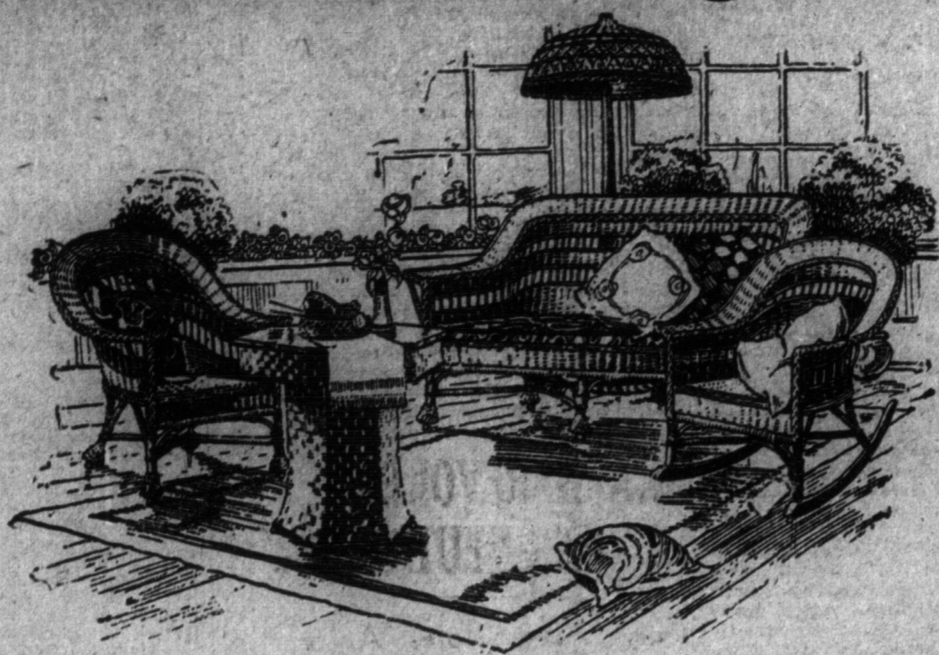


EATON'S DAILY STORE NEWS

Cool, Comfortable, Charming Furniture for the Summertime Living-Porch



ONLY THE SOFT, FLEXIBLE RATTAN AND WILLOW FURNITURE CAN IMPART TO THE SUMMER LIVING-ROOM AND PORCH THE CORDIAL INVITATION TO REST

It looks cool, clean and homelike, this craftsmen's furniture. You will find it more comfortable than the big chairs in the library, or your favorite seat at the club. In the furniture building is arranged an immense grouping, both plain and upholstered, with cretonne patterned in foliage, floral bud and scenic designs.

The Suite illustrated above is of either Baronial brown or Verdure green, woven prairie grass. It consists of octagonal shaped Table, 28 inches in diameter, at \$16.75; Arm Chair, \$15.25; Arm Rocker, \$16.00; Settee, \$27.50, and Floor Lamp to match 22.00

The National Defense Against the Enemy Fly and Mosquito

consists in providing one's household beforehand with—

1. Window Screens of selected hardwood, finished in oil, of strong, fine wire cloth.

Height	Closed	Open	Price
14	14	20	.20
14	22	36	.25
14	30	52	.35
18	18	28 1/2	.27
18	22	36 1/2	.30
18	26	44	.36
22	22	36 1/2	.32
22	26	44 1/2	.42
24	30	52	.52
2. Screen Doors, pine, with grained quartered oak finish, in any of the following sizes. Price . . . 1.10 and 1.25

3 ft. 6 in. x 6 ft. 6 in.	3 ft. 8 in. x 6 ft. 8 in.	3 ft. 10 in. x 6 ft. 10 in.	3 ft. 0 in. x 7 ft. 0 in.
---------------------------	---------------------------	-----------------------------	---------------------------

—Furniture Bldg., James and Albert Sts.

Men's Work Shirts at 50c Each

The materials are chambrays, in light blue color, and Khaki Drills. These fabrics do not show the dirt easily, will stand frequent washing, and are double sewn. The shoulder is reinforced with yoke. Have attached soft collar and single band cuff. Sizes 14 to 17. Each 50

—Main Floor, Centre.

The Note Book Diamond Brilliance

It is interesting to note that the brilliance of a good diamond is due, not only to light reflected at the surface, but to rays of light that have traveled through the crystal to the bottom facets, and then back again, escaping at the top.

You can readily imagine the effect that flaws or blemishes in the interior of the stone would have on these light rays passing through.

When you pick up any of our Diamond Rings, for instance, one priced at \$50, \$75, \$100 or more, you realize at once the high quality of the diamonds, for they are fairly alive with light.

The Jewelry Department is showing a collection of three-stone engagement and unusually designed Diamond Rings delicately mounted in platinum crowns.

EARLY CLOSING

During MAY, June, July, August and SEPTEMBER, Store Closes at 1 p.m. on Saturdays. No Noon Delivery on Saturdays.

SATURDAY AT 1 P.M.

Union Art Rugs Clearing at From \$4.85 to \$11.85

Make your home in the midst of nature as "homey" as you can—and if the floors need coverings, here is the opportunity to save dollars on the cost, while these Union Art Rugs are available at the following special prices. They are woven of strong cotton and wool on a cotton warp; they will stand a lot of the rough use such as one gives rugs in the summer home, the general bedrooms, the children's playroom or the sitting-room. There are several floral and conventional patterns, in red and fawn, 2-tone green, or green, fawn and brown. Size 7' 6" by 9'. Special, each, \$4.85. Size 9' by 10' 6". Special, each, \$6.85. Size 9' by 12'. Special, each, \$7.85. Size 12' by 13' 6". Special, each 11.85

English Tapestry Rugs For Bedroom or Sitting-Room \$11.00 to \$14.75

There's that "cosiness" about these Rugs one associates with the domesticated bedroom, sewing-room, living-room or even the dining-room. Possibly it is the "Chintz" effect of the designs of flowers or medallions, or maybe it is the harmony of the colors. And the firm, even, secure weave and good weight promise good service. Ground colors are brown or green. Size 7' 6" by 9', each, \$11.00. Size 9' by 9', each, \$13.00. Size 9' by 10' 6", each 14.75

The kitchen floor should not be covered with any but the most dependable grades of Linoleum, if you want the maximum of wear. Here is heavy printed Linoleum that will give satisfactory service and does not mean a very great outlay. It has a firm base, doesn't crack easily, is pliable and the colors wear remarkably well. Conventional, block, tile and floral patterns; 2 yards wide. Special, square yard 59

—Fourth Floor.

WE prepay shipping charges on all orders of \$10.00 or over to your nearest station in Ontario and Eastern Provinces on both Mail Orders and City Purchases.

What is Summer Without a Refrigerator?

—not as pleasant, surely, or as healthful as with one.

Refrigerators of well-seasoned, kiln-dried hardwood, on easy-running castors, the interior fitted with five walls and provision chamber finished in white enamel. Width 28 1/2 in., depth 19 1/2 in., height 44 1/2 in. Price, \$16.95.

Hardwood Refrigerator, with heavy bronze locks and hinges, with ample room for food and ice. Width 26 1/2 in., depth 19 1/2 in., height 54 in., \$18.50.

With provision chamber of white enamel, otherwise the same as above, \$21.25. —Furniture Bldg., James and Albert Sts.

Summer Hats for the Kiddies

You couldn't find a better time to select the new Straw Hat for that boy or girl than right now, while all the size and style ranges are complete.

These are a few: Children's Hats of fine straw, in Canton, Tuscan and Milan braids. Many styles, such as Jack Tar, Middy and the dome or square crown, \$1.25, \$1.50, \$1.50 and \$1.75. Children's Straw Hats, with flexible brims and crown either in the dome or fancy style, \$4.00 and \$6.00. Children's Black Straw Hats may be had in many becoming shapes, \$1.00 and \$1.50. —Main Floor, James St.

Plants, Shrubs, Etc.

- Geraniums, six plants in basket, a basket 80
- Pansies, 12 plants in basket, a basket 45
- Salvia, 12 plants in basket, a basket 60
- Coleus, 12 plants in basket, a basket 60
- Forget-me-nots, 12 plants in basket, a basket 60
- Nasturtiums, 12 plants in basket, a basket 60
- Fuchsia, 12 plants in basket, a basket 60
- Petunias, 12 plants in basket, a basket 60
- Sweet Alyssum, 12 plants in basket, a basket 60
- Lobelia, 12 plants in a basket, a basket 60
- Asters and Tomato Plants, a dozen 75
- Vegetable and Flower Seeds, 12 packages for 25 —Fifth Floor.

Passport Photographs, 4 for 25c

Henceforth those who have occasion to cross the American border require clear, well-photographed passports. In the C. D. V. Photo Gallery, Main Floor, we are making a special feature of producing the proper size passport photos in head, shoulder or full figure sittings. We suggest that you have a passport taken now and be port taken now and be equipped for any sudden trip or outing to the other side 4 for 25 —Apply Camera Counter, Main Floor, James St.

Fancy Curtain Nets Much Below Present Market Price, 20c Yard

The present price at mill or manufacturer's agent for Curtain Net no better than this, is more than twice this clearing figure, which gives some idea of the importance of this bargain for the housewife seeking new curtain materials. It's a collection of discontinued patterns, ends of lines, ends of pieces, and a few pieces that have become just slightly soiled through showing on the racks. Enough for a pair of curtains at least; sufficient in some pieces for several pairs. 40" to 50" wide; white, ivory or ecru; in one of the widest varieties of patterns we have ever offered for an early-morning bargain. Not more than 15 yards to a customer. Wednesday, early special, yard 20

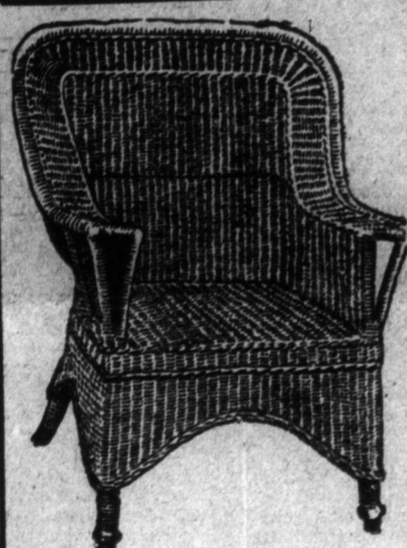
Scrim for Making Into Durable Curtains, 12 1-2c Yd.

This material is equally adapted for making into curtains hung next to the glass or for overcurtains. It has conventionally designed borders, in combination colors, such as brown, tan and green; or tan and blue; the grounds are fine and even, it will launder soft; holds its shape well and requires very little labor to make up. 36" wide. Yard 12 1/2

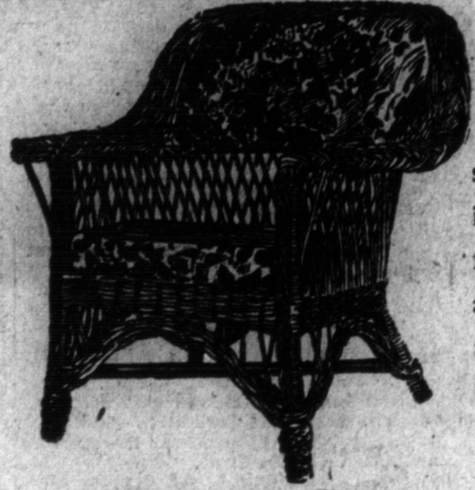
English Casement Cloth, in medium weight; fine, even and strong. Rose, blue, brown, green, ecru, olive or cream. 50" wide. Yard 1.00

Curtains of Nottingham lace; 48" to 52" wide; 2 3/4 and 3 yards long; in white, ivory or ecru; have strong, fine grounds, and evenly scalloped edges. Floral, conventional, medallion, ribbon stripe, or leaf designs. Special value, pair 3.00

Rope Draperies, suitable for portieres or doorways; have the effect of a valance in the centre at top, and are trimmed with tassels. 5' wide, 7' long; red, dark green, light green, brown or combination colors. Each 3.00 —Fourth Floor.



Closely Woven Arm Chair, of dark, soft, flexible rattan. Price, 8.75



Arm Chair of selective rattan, in a light, natural finish, comfortably curving arms and back. Price, \$9.50.

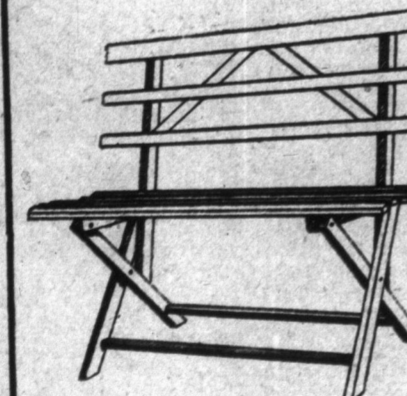


Rattan Arm Chair, with wide arms, deep seat and cretonne upholstery, in floral designs of roses and wistaria. Price . . . 12.75

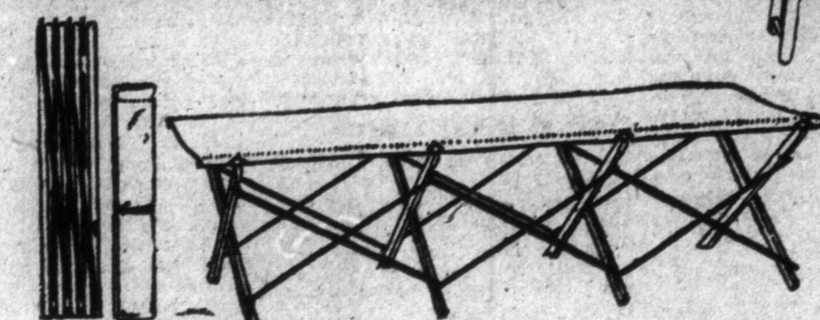
IF YOU NEED CAMP FURNITURE

—you should choose the lightest, simplest and most durable, whether you camp at the island or deep in the "wild and woolly."

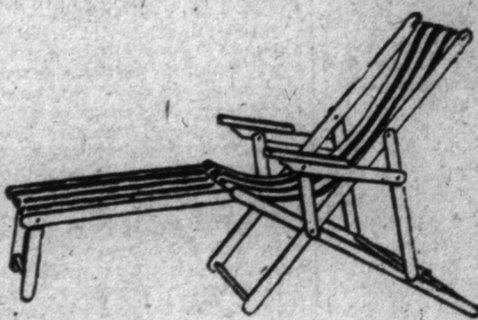
A group of Camp Cots, Settees and Arm Chairs, all of which may be folded into compact form, is shown in the Furniture Building.



Folding Settees, with frames, green or red, and natural finished slats, 42 inches in length, light and strong. Price, 1.25



Folding Cots, with strong steel and wood frame and heavy canvas top. Price 3.60



Canvas Folding Arm Chair, with adjustable back and foot rest, and heavy striped canvas. Price 1.80

—Furniture Bldg., James and Albert Sts.

MOTOR DUST COATS

that not only keep your clothes clean, but, just as important, your appearance faultlessly neat.

These are available in the new Palm Beach Cloths, Chambrays, Tropical Worsteds, Grass Linens and Holland Cloth, at prices from \$2.00 to 12.50

A Dust Coat in a grass-colored Holland cloth is single-breasted, buttons to neck, has turn-down collar, good full skirt and patch pockets. Sizes 36 to 46. Price 2.00

A heavier quality, in the same color, is shown in double-breasted style, with 4-inch collar. Price 2.75

A Silver Grey and Fawn Chambray Coat, is double-breasted, as illustrated. Price . . . 4.00

A Dust Coat in tan shade material after the weave of oatmeal cloth, also in fine Holland cloth, is in double-breasted style, with slash pockets and opening to inner pockets. Price . . . 5.00

Dust Coats of lustré, in medium grey or plum shade, are double-breasted, with half belt at back, slash pockets and opening to inner clothes. Price 7.50

In tropical worsted, a light-weight Coat comes in dark grey, with a smart hairline stripe, as illustrated. Price 8.50

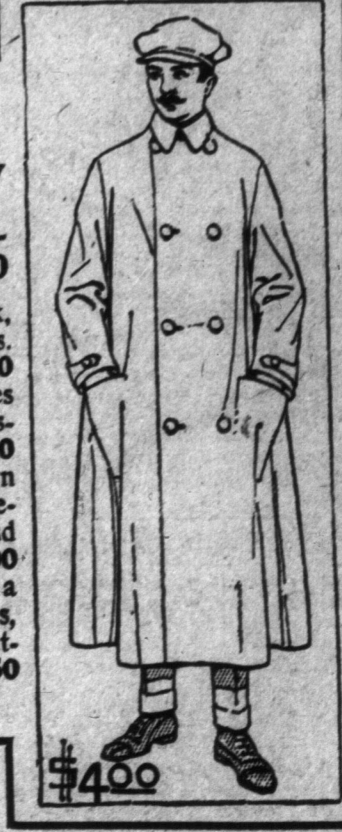
A durable and stylish Coat is made of fawn crash cloth, with a mixture of golden. Double-breasted with half belt, large pearl buttons and patch pockets, closing with buttons. Price, 10.00

A military style Coat of Palm Beach Cloth, a rich material of fawn shade, has breast pockets, slash pockets, half belt, large smoked pearl buttons and wind shield in sleeves. Price . . 12.50

—Main Floor, Queen St.



\$8.50



\$4.00

T. EATON CO LIMITED

SAVE TIME SHOP WITH A TRANSFER CARD

Ask for a Transfer Card when you make your first purchase; each purchase is then added. You pay total at Pay-in Station, Basement.

CEMETERY

Vaults to

COUNTRYSIDE

Plunder Buildings,

Champion

have just

Just seen in the

has vacated

No need for

already of

for generations

of the inhabi

in France

and raised above

of officers who

had days of

The vanished

over them

living received

to retreat

thought himself

of his own

ken Open

in that com

nearby every

was cracked

of coffins

which had

of those men

remembered

into World

appeared in

stealing a

of the compl

of the Phon

operations

by the neces